



SOL
PROPERTIES



Portal

Enter Tomorrow

AGIOS IOANNIS | Q4-2026

A modern, multi-story apartment building with a central entrance labeled "PORTAL". The building features balconies with plants and large windows. The scene is set at dusk, with interior lights glowing. A person is riding a bicycle on the right, and a car is visible in the parking area on the left. The text "Enter Tomorrow" is overlaid in the center.

Enter Tomorrow

PORTAL

PORTAL

* Portal

Portal is a modern residential apartment project located in the prime developing business area of Limassol.

Consisting of a 4-story building with carefully designed apartments, including 14 one-bedrooms and 6 two-bedrooms, offering elegant multiple facilities for sport, work, and relaxation.

Portal is not just about comfortable living, is a tool for the people of tomorrow who are seeking more and want to surround themselves with an atmosphere that fosters productive rest and work.

 SOL
PROPERTIES



 LOCATION

Portal is situated in Agios Ioannis, the most actively developing business areas of Limassol.

Close proximity to the city's major business centres, where largest companies aim to establish themselves, makes it a great opportunity to combine life and work.

[LOCATION ON GOOGLE MAPS](#)

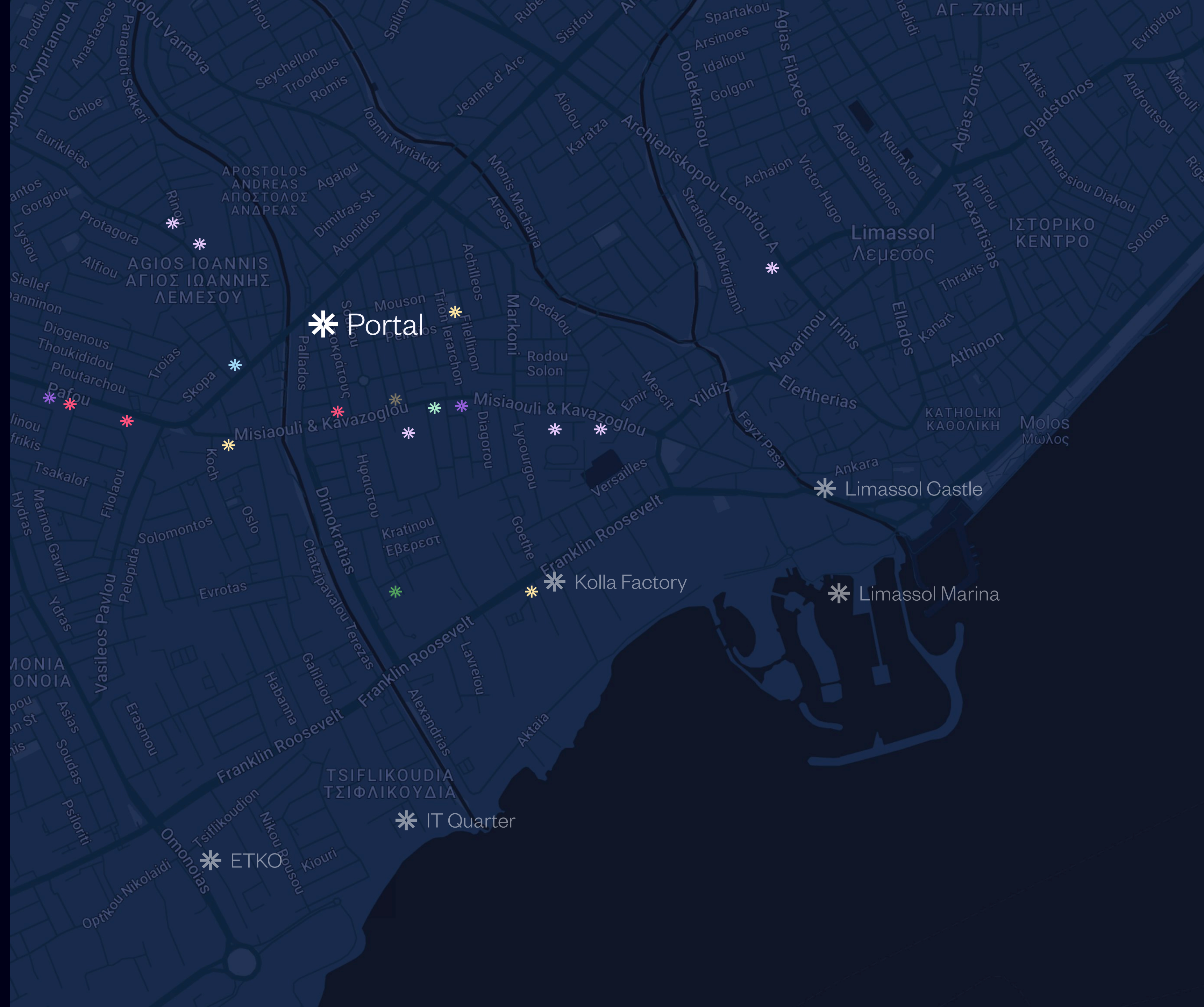
 SOL PROPERTIES



* LOCATION

Portal is situated in Agios Ioannis, the most actively developing business areas of Limassol.

- * SUPERMARKET
- * COFFEE SHOP
- * GYM
- * PHARMACY
- * SCHOOL
- * GAS STATION
- * BAKERY
- * PADEL & TENNIS COURTS



* Portal

High standards of construction, planning and energy efficiency:

Portal utilises bioclimatic design principles to secure a Class A Energy Performance certification, meeting the country's regulatory requirements. It features high-quality materials to deliver superior standards, durability, affordability and eco-friendliness.

47kwh/m2/yr (Energy Class A)

A

B

C

D

E

F



*Portal interior & floor plans

Every aspect of the interior has been carefully planned to optimise space, allowing natural light and air to circulate freely. This considerate design fosters a living space that is not only functional but also aesthetically pleasing.

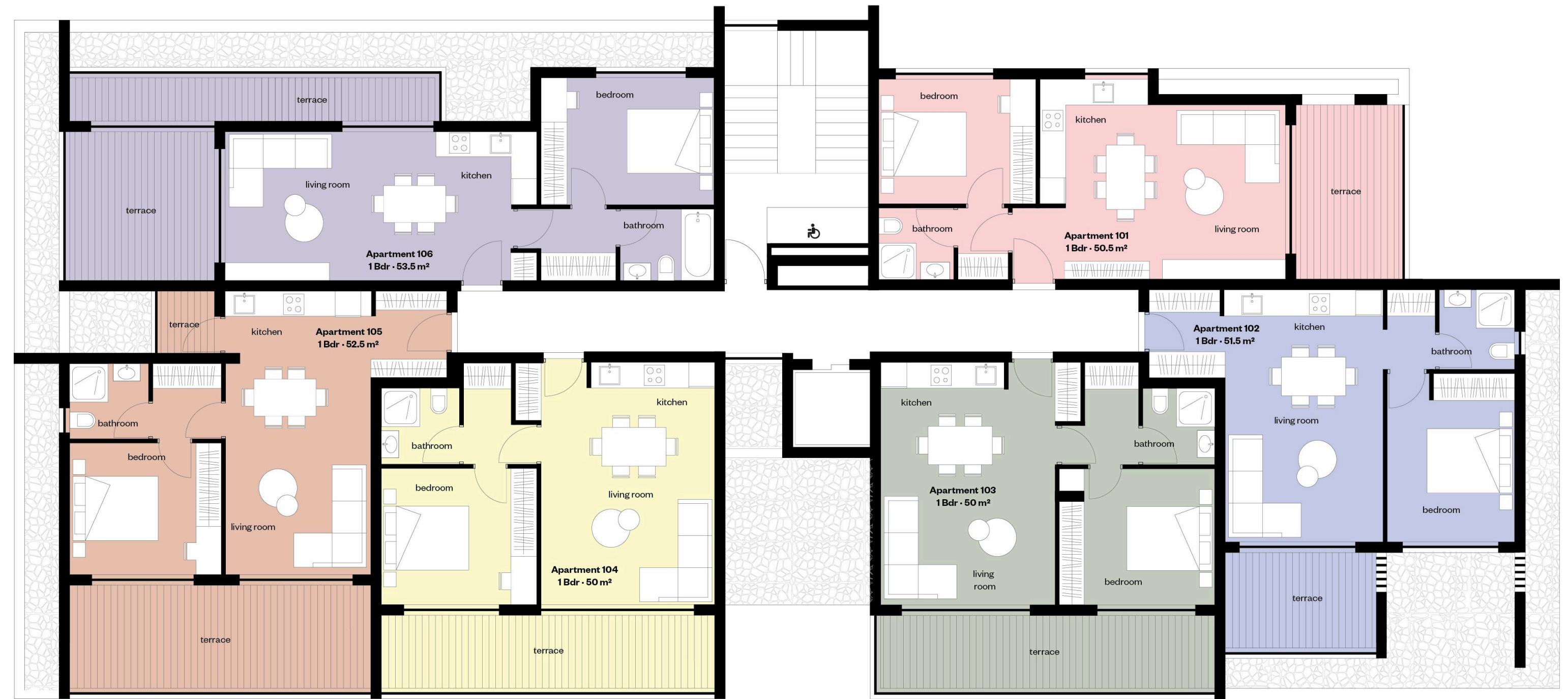
In this project, we introduced new, modern solutions that go beyond local standards.

- * CONCEALED FACETS
- * A/C SPLIT SYSTEM
- * HIDDEN DOORS
- * ENTRYWAY





1st Floor Plans



	BEDROOMS	BATHROOMS	INTERNAL AREAS (M ²)	COVERED VERANDAS(M ²)	UNCOVERED VERANDAS(M ²)	STORAGE ROOM(M ²)	TOTAL AREAS (M ²)
* FLAT 101	1	1	50.5	10.5	0	2	63
* FLAT 102	1	1	51.5	9.1	0	2	62.6
* FLAT 103	1	1	50	16.5	0	2	68.5
* FLAT 104	1	1	50	16	0	2	68
* FLAT 105	1	1	52.5	21.7	0	2	76.2
* FLAT 106	1	1	53.5	25.7	0	2	81.2



	BEDROOMS	BATHROOMS	INTERNAL AREAS (M ²)	COVERED VERANDAS(M ²)	UNCOVERED VERANDAS(M ²)	STORAGE ROOM(M ²)	TOTAL AREAS (M ²)
* FLAT 201	1	1	50.5	10.5	0	2	63
* FLAT 202	1	1	51.5	9.1	0	2	62.6
* FLAT 203	1	1	50	16.5	0	2	68.5
* FLAT 204	1	1	50	16	0	2	68
* FLAT 205	1	1	52.5	21.7	0	2	76.2
* FLAT 206	1	1	53.5	25.7	0	2	81.2

2nd Floor Plans

*Portal 1 Bedroom



Portal

Enter Tomorrow



Portal

Enter Tomorrow



Portal

Q4-2026



Enter Tomorrow



3rd Floor Plans



	BEDROOMS	BATHROOMS	INTERNAL AREAS (M ²)	COVERED VERANDAS(M ²)	UNCOVERED VERANDAS(M ²)	STORAGE ROOM(M ²)	TOTAL AREAS (M ²)
* FLAT 301	1	1	50.5	10.5	0	2	63
* FLAT 302	2	2	84	38	0	2	124
* FLAT 303	2	2	86.5	24.2	17.6	2	130.3
* FLAT 304	2	2	87	25	12.8	2	126.8



	BEDROOMS	BATHROOMS	INTERNAL AREAS (M ²)	COVERED VERANDAS(M ²)	UNCOVERED VERANDAS(M ²)	STORAGE ROOM(M ²)	TOTAL AREAS (M ²)
* FLAT 401	1	1	50.5	10.5	0	2	63
* FLAT 402	2	2	84	22.3	16.5	2	124.8
* FLAT 403	2	2	86.5	16.7	0	2	105.2
* FLAT 404	2	2	87	19.4	0	2	108.4

4th Floor Plans

*Portal 2 Bedroom



Portal

Enter Tomorrow



Portal

Enter Tomorrow



SOL
PROPERTIES

Q4-2026



Portal

Enter Tomorrow



Portal



Enter Tomorrow

Portal

Enter Tomorrow

Portal

Enter Tomorrow

*Portal facilities

The main goal of the project is to turn every day into an opportunity for growth. To achieve this, we have also created all the comfortable conditions for top-notch relaxation, productive work, and sports. You can enjoy a full day without leaving home: solve work tasks while enjoying the panoramic views of the mountains and the sea, exercise in the gym, swim in the pool, relax on sun-beds, and in the evening invite friends for a barbecue against the backdrop of the city lights.

- * SWIMMING POOL
- * GYM
- * CO-WORKING AREA
- * LOUNGE ZONE
- * DINING AREA



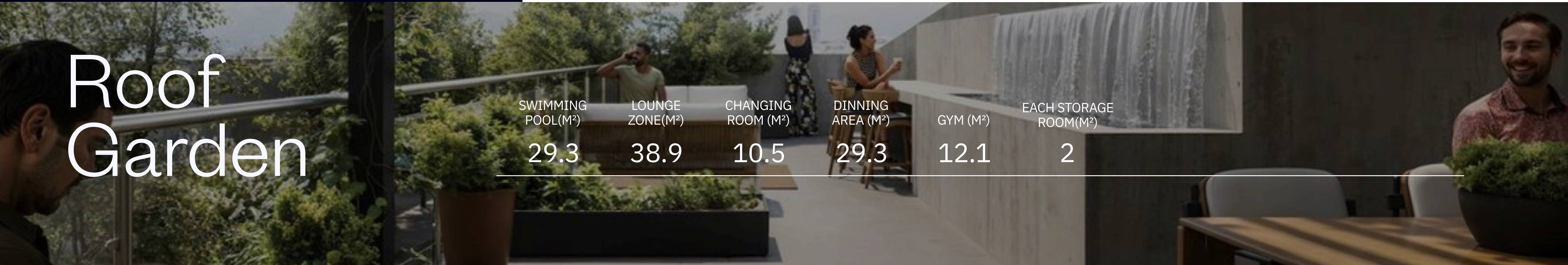
*Portal facilities

The main goal of the project is to turn every day into an opportunity for growth. To achieve this, we have also created all the comfortable conditions for top-notch relaxation, productive work, and sports.



Roof Garden

SWIMMING POOL(M ²)	LOUNGE ZONE(M ²)	CHANGING ROOM (M ²)	DINNING AREA (M ²)	GYM (M ²)	EACH STORAGE ROOM(M ²)
29.3	38.9	10.5	29.3	12.1	2



*Portal team

Our team is committed to thoroughly evaluating every detail of the project, from its beginning to its conclusion.

Every member of our team contributes extensive knowledge and experience, and their combined efforts have produced a project that maximizes space, enhances energy efficiency, is visually appealing, and offers a comfortable living environment.





Portal apartments list

	BEDROOMS	BATHROOMS	INTERNAL AREAS (M ²)	COVERED VERANDAS(M ²)	UNCOVERED VERANDAS(M ²)	STORAGE ROOM(M ²)	TOTAL AREAS (M ²)
FLAT 101	1	1	50.5	10.5	0	2	63
FLAT 102	1	1	51.5	9.1	0	2	62.6
FLAT 103	1	1	50	16.5	0	2	68.5
FLAT 104	1	1	50	16	0	2	68
FLAT 105	1	1	52.5	21.7	0	2	76.2
FLAT 106	1	1	53.5	25.7	0	2	81.2
FLAT 201	1	1	50.5	10.5	0	2	63
FLAT 202	1	1	51.5	9.1	0	2	62.6
FLAT 203	1	1	50	16.5	0	2	68.5
FLAT 204	1	1	50	16	0	2	68
FLAT 205	1	1	52.5	21.7	0	2	76.2
FLAT 206	1	1	53.5	25.7	0	2	81.2
FLAT 301	1	1	50.5	10.5	0	2	63
FLAT 302	2	2	84	38	0	2	124
FLAT 303	2	2	86.5	24.2	17.6	2	130.3
FLAT 304	2	2	87	25	12.8	2	126.8
FLAT 401	1	1	50.5	10.5	0	2	63
FLAT 402	2	2	84	22.3	16.5	2	124.8
FLAT 403	2	2	86.5	16.7	0	2	105.2
FLAT 404	2	2	87	19.4	0	2	108.4



SOL
PROPERTIES

+357 99 000 501
SOLPROPERTIES.CO

solidifying
your dreams

DISCLAIMER

The information contained in this brochure does not constitute a representation by the Owner / Developer or its agent and is provided for information and/or conceptual purposes only. It is meant only for promotional purposes and has no legal value. The Developer / Owner retains the copyright of material in this brochure and may change all information contained at any time without notice. All matters will be governed by the applicable sale and purchase agreement between the parties and the specifications attached to it. The exterior illustrations and computer generated images included in this brochure do not take into account the neighbouring buildings, physical structures, streets and landscape. They are provided solely to give a general idea of the final look and feel of the exterior of the project, and minor variations might apply. The interior illustrations and computer generated images included in this brochure are intended for conceptual purposes only and are not representative of any space or of any size or dimension of any space nor meant to represent the actual interior design that will be delivered. They are provided solely to give an idea to the purchases of how they could potentially design their spaces.