



Keys

follow the rhythm

PANTHEA | Q4-2026

follow the rhythm



* Keys

A boutique residential address with panoramic views of the sea and the city. Keys is an exclusive residential project set in one of Limassol's most refined and elevated neighborhoods — Panthea, Mesa Geitonia.

Designed for those who appreciate clarity, balance, and intentional living, Keys offers a rare combination of architectural refinement, absolute tranquility, and permanently unobstructed views of the Mediterranean Sea and the city below.



 PANTHEA, MESA GETONIA

Positioned on a quiet, prestigious street, Keys enjoys a sense of calm and privacy while remaining seamlessly connected to the rhythm of the city.

The panoramic views of the Mediterranean Sea and Limassol skyline are permanently protected. In front of the building lies a preserved historic church monument, ensuring that the horizon remains open, uninterrupted, and timeless. Here, the landscape becomes part of your everyday life.

[LOCATION ON GOOGLE MAPS](#)

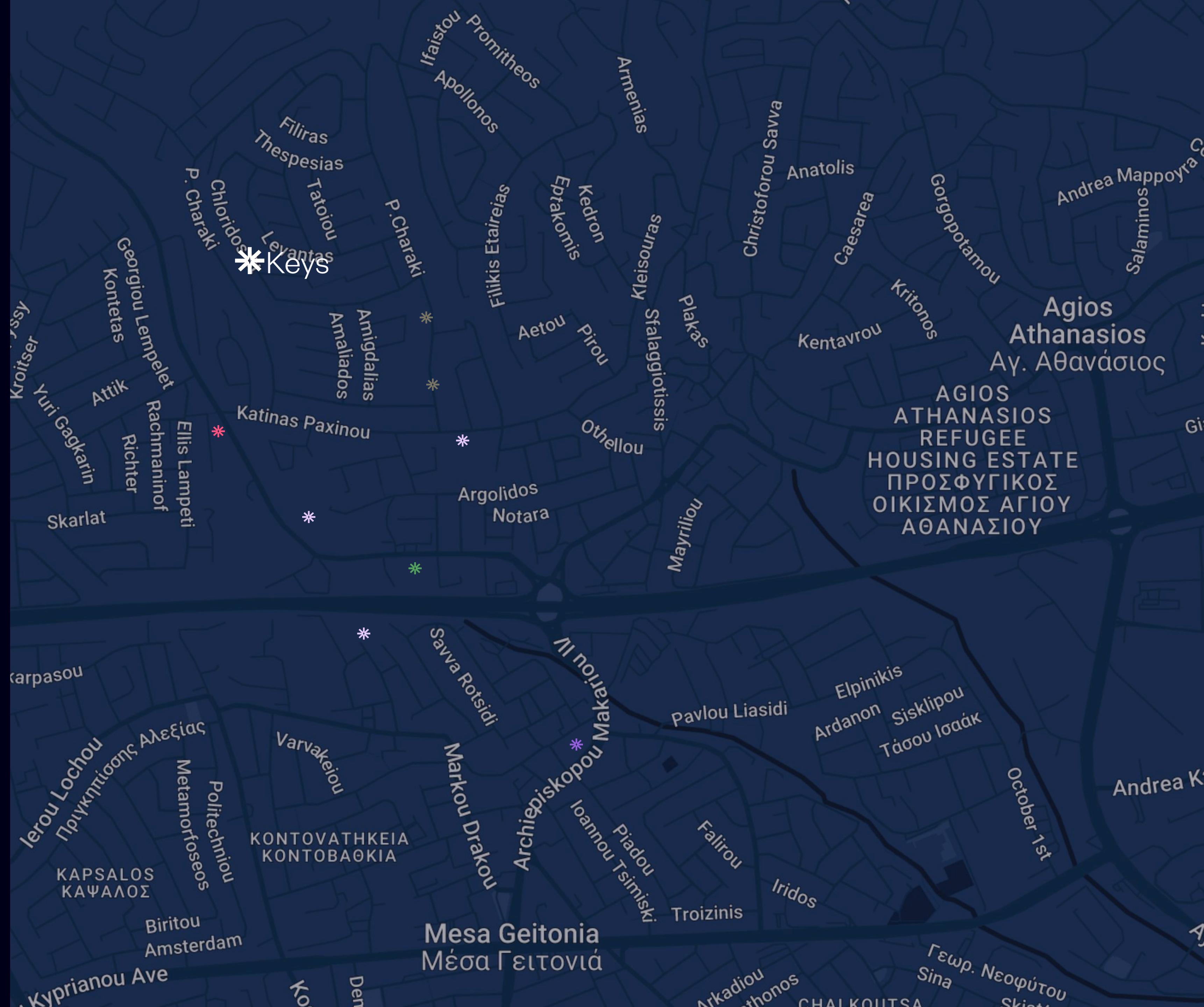


* PANTHEA, MESA GETONIA

A boutique residential address with panoramic views of the sea and the city.

Keys is an exclusive residential project set in one of Limassol's most refined and elevated neighborhoods — Panthea, Mesa Geitonia.

- * COFFEE SHOP
- * GYM
- * PHARMACY
- * SCHOOL
- * GAS STATION
- * BAKERY
- * MINI FOOTBALL



* Keys

High standards of construction, planning and energy efficiency:

Keys utilises bioclimatic design principles to secure a Class A Energy Performance certification, meeting the country's regulatory requirements. It features high-quality materials to deliver superior standards, durability, affordability and eco-friendliness.

47kwh/m2/yr (Energy Class A)

A

B

C

D

E

F



*Keys interior & floor plans

The Keys space was designed to transform every corner—even the most ordinary rooms—into atmospheric and cozy places that open the mind to inspiration and imagination. Light play, lush greenery enveloping the building, and artistic interior design leave no one indifferent and fill the space with meaning.

Combined with innovative technological solutions, the project offers a truly unique living experience

- * CONCEALED FACETS
- * A/C SPLIT SYSTEM
- * HIDDEN DOORS
- * ENTRYWAY





1st Floor Plans

	BEDROOMS	BATHROOMS	INTERNAL AREAS (M ²)	COVERED VERANDAS(M ²)	UNCOVERED VERANDAS(M ²)	STORAGE ROOM(M ²)	TOTAL AREAS (M ²)
* FLAT 101	2	2	80.2	29.7	0	4.8	114.7
* FLAT 102	2	2	75.1	12.6	0	5.3	93
* FLAT 103	2	2	75	12.6	0	5.1	92.7
* FLAT 104	2	2	80.7	29.7	0	5	115.4



	BEDROOMS	BATHROOMS	INTERNAL AREAS (M ²)	COVERED VERANDAS(M ²)	UNCOVERED VERANDAS(M ²)	STORAGE ROOM(M ²)	TOTAL AREAS (M ²)
* FLAT 201	2	2	80.2	29.7	0	5.1	115
* FLAT 202	2	2	75.1	12.6	0	4.5	92.2
* FLAT 203	2	2	75	12.6	0	5	92.6
* FLAT 204	2	2	80.7	29.7	0	5.5	115.9

2nd Floor Plans



*Keys 2 bedroom





Keys

follow the rhythm



Keys

follow the rhythm



Keys

follow the rhythm



Keys



follow the rhythm



	BEDROOMS	BATHROOMS	INTERNAL AREAS (M ²)	COVERED VERANDAS(M ²)	UNCOVERED VERANDAS(M ²)	STORAGE ROOM(M ²)	TOTAL AREAS (M ²)
* FLAT 301	3	2	104.9	29.7	0	4.4	139
* FLAT 302	1	1	50.4	12.6	0	4.4	67.4
* FLAT 303	1	1	50.4	12.6	0	4.3	67.3
* FLAT 304	3	2	105.3	29.7	0	4.3	139.3

3rd Floor Plans

*Keys 1 Bedroom



A modern living room with a grey sofa, a dark coffee table, a floor lamp, and a dog resting on a pet bed. The room is decorated with a large abstract artwork and a window with blinds.

Keys

follow the rhythm

Keys

follow the rhythm





Keys

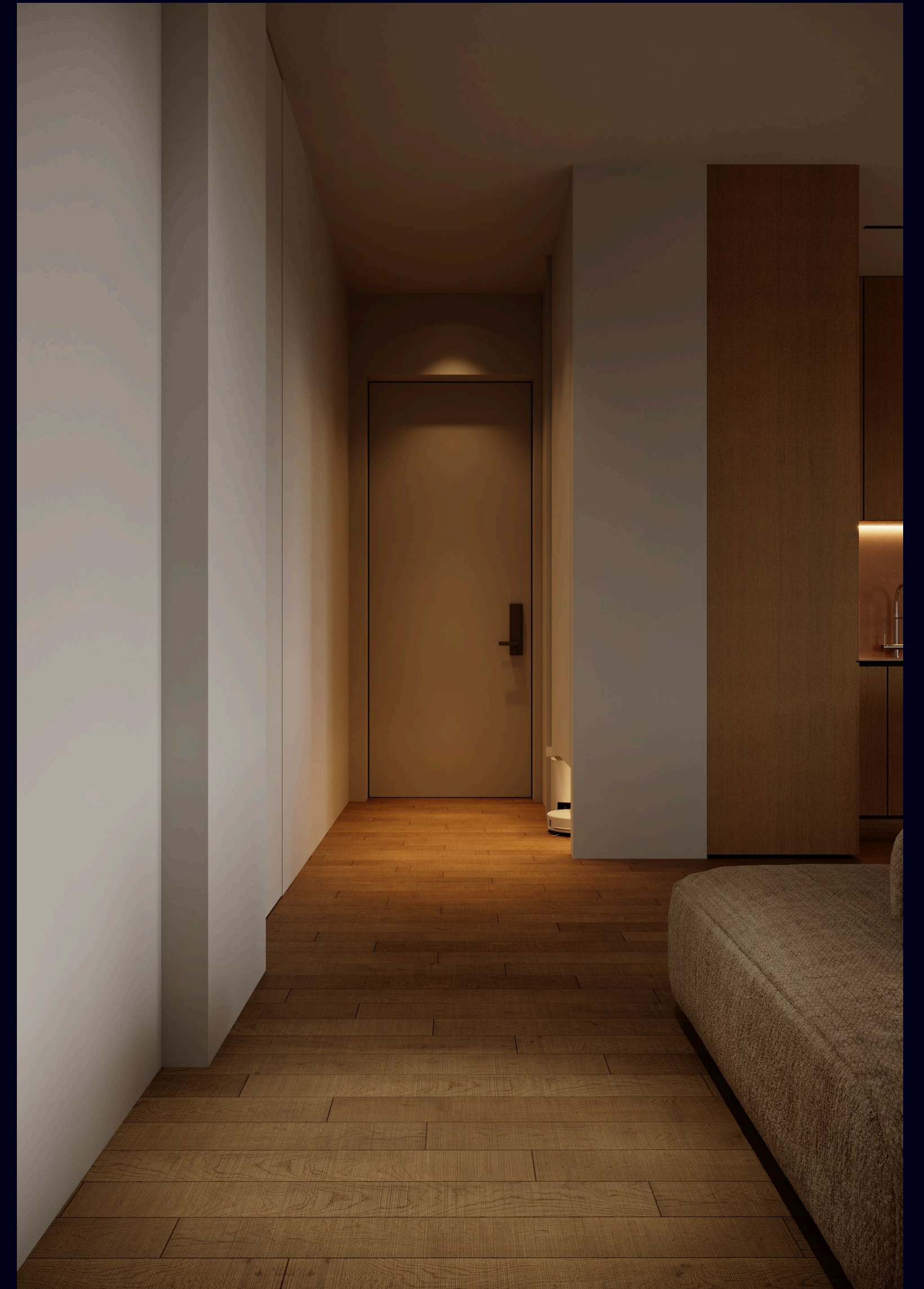
follow the rhythm



Keys

follow the rhythm

*Keys 3 Bedroom Penthouse





Keys

follow the rhythm



Keys

follow the rhythm



Keys



follow the rhythm



Keys

follow the rhythm



Keys

follow the rhythm



Keys

follow the rhythm



Keys

follow the rhythm

*Keys facilities

Adding variety to the experience is a fully covered common space on the top floor, divided into two zones: one is a gym offering a range of activities, and the other is a social area with cooking, dining, and lounge zones - an ideal spot for heartfelt evenings in the company of loved ones

- * GYM
- * CO-WORKING AREA
- * LOUNGE ZONE
- * DINING AREA



*Keys facilities

Adding variety to the experience is a fully covered common space on the top floor, divided into two zones: one is a gym offering a range of activities, and the other is a social area with cooking, dining, and lounge zones - an ideal spot for heartfelt evenings in the company of loved ones



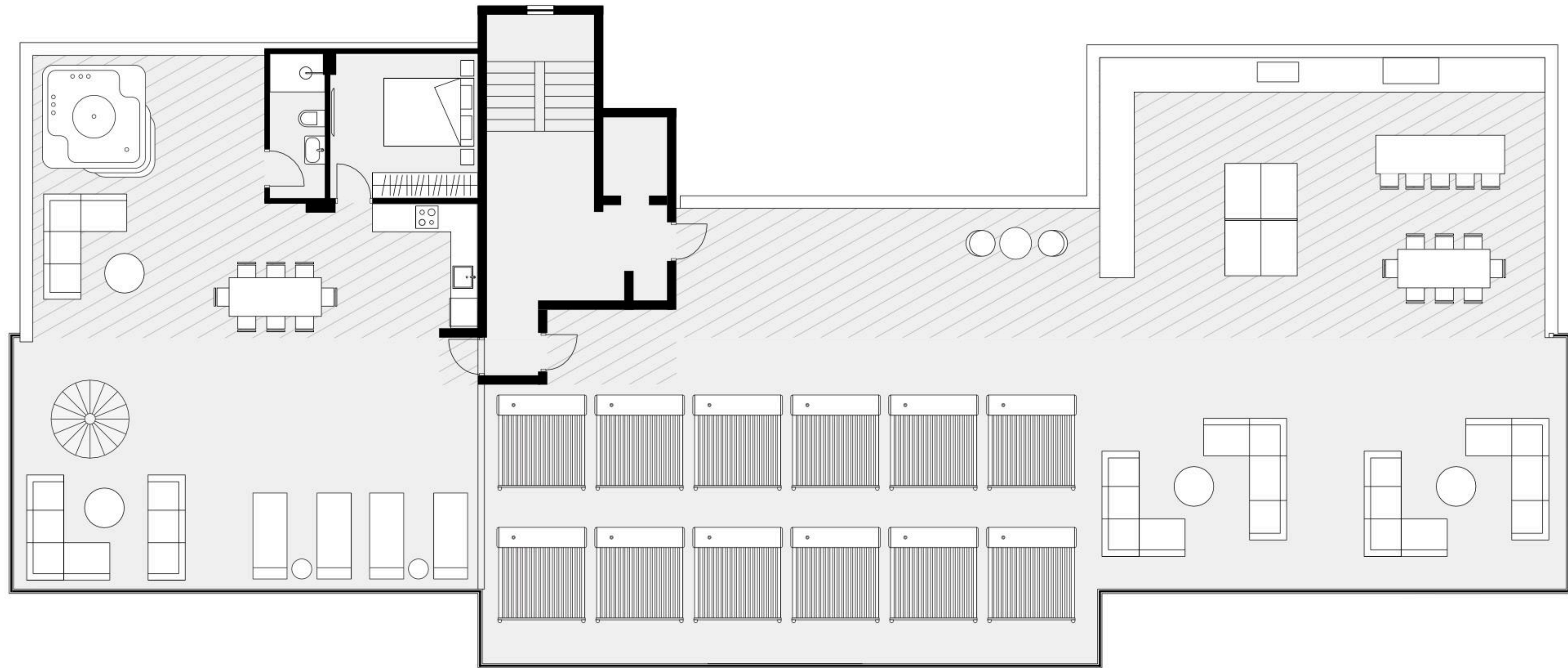
Roof Garden



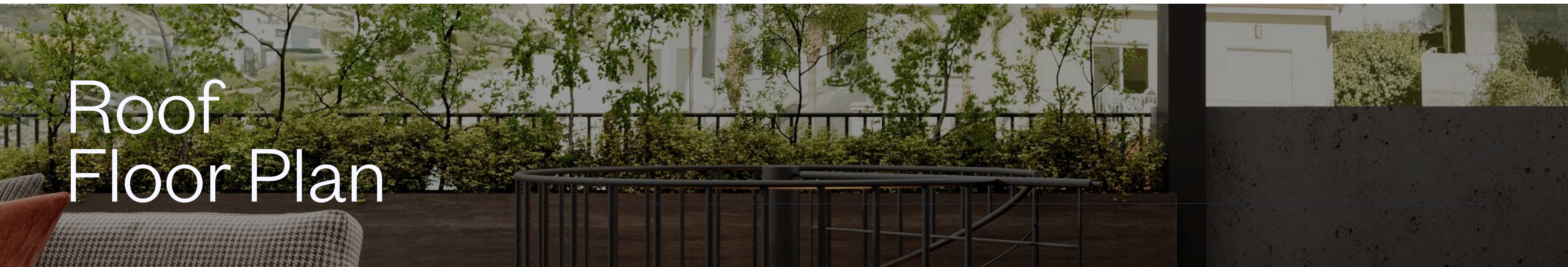


Keys

follow the rhythm



Roof
Floor Plan



*Keys team

Our team is committed to thoroughly evaluating every detail of the project, from its beginning to its conclusion.

The team behind the project was deeply inspired by the idea of creating a place imbued with comfort and aesthetic appeal, bringing their accumulated experience in design, spatial planning, and modern construction solutions into its realization



	BEDROOMS	BATHROOMS	INTERNAL AREAS (M ²)	COVERED VERANDAS(M ²)	STORAGE ROOM (M ²)	TOTAL AREAS (M ²)
101	2	2	80.2	29.7	4.8	114.7
102	2	2	75.1	12.6	5.3	93
103	2	2	75	12.6	5.1	92.7
104	2	2	80.7	29.7	5	115.4
201	2	2	80.2	29.7	5.1	115
202	2	2	75.1	12.6	4.5	92.8
203	2	2	75	12.6	5	92.6
204	2	2	80.7	29.7	5.5	115.9
301	3	2	104.9	29.7	4.4	139
302	1	1	50.4	12.6	4.4	67.4
303	1	1	50.4	12.6	4.3	67.3
304	3	2	105.3	29.7	4.3	139.3

Keys
apartment list

DISCLAIMER

The information contained in this brochure does not constitute a representation by the Owner / Developer or its agent and is provided for information and/or conceptual purposes only. It is meant only for promotional purposes and has no legal value. The Developer / Owner retains the copyright of material in this brochure and may change all information contained at any time without notice.

All matters will be governed by the applicable sale and purchase agreement between the parties and the specifications attached to it. The exterior illustrations and computer generated images included in this brochure do not take into account the neighbouring buildings, physical structures, streets and landscape. They are provided solely to give a general idea of the final look and feel of the exterior of the project, and minor variations might apply. The interior illustrations and computer generated images included in this brochure are intended for conceptual purposes only and are not representative of any space or of any size or dimension of any space nor meant to represent the actual interior design that will be delivered. They are provided solely to give an idea to the purchases of how they could potentially design their spaces.