



# TAMARA gardens<sup>2</sup><sub>by GC</sub>

PLUS 57 <sub>by GC</sub>

LIVADIA - LARNACA

COMING SOON

TAMARA  
gardens 2<sup>by GC</sup>

PLUS 57 by GC

LIVADIA - LARNACA



**TAMARA**  
gardens <sup>2</sup> by GC

**PLUS 57** by GC

LIVADIA - LARNACA



**TAMARA**  
gardens <sup>2</sup> by GC

**PLUS 57** by GC

LIVADIA - LARNACA



**BLOCK A**

**Tamara Gardens**

TAMARA  
gardens 2<sup>by GC</sup>

PLUS 57 by GC

LIVADIA - LARNACA



TAMARA  
gardens <sup>2</sup> by GC

PLUS 57 by GC

LIVADIA - LARNACA



BLOCK C

**TAMARA**  
gardens <sup>2</sup> by GC

**PLUS 57** by GC

LIVADIA - LARNACA



TAMARA  
gardens 2<sup>by GC</sup>

PLUS 57 by GC

LIVADIA - LARNACA



**TAMARA**  
gardens <sup>2</sup> by GC

**PLUS 57** by GC

LIVADIA - LARNACA



TAMARA  
gardens <sup>2</sup> by GC

PLUS 57 by GC

LIVADIA - LARNACA



**TAMARA**  
gardens <sup>2</sup> by GC

**PLUS 57** by GC

LIVADIA - LARNACA





# NEW MARINA & LIVADIA AREA

25 luxurious projects by Plus Properties | Fastest developing area in Larnaca with foreign investments |

Biggest Marina & Port in Cyprus | New American University of Cyprus | Opportunities with high return on investment

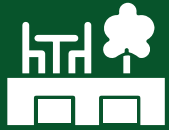
[CLICK HERE](#)



5 BLOCKS



1,2 & 3 BEDROOM  
APARTMENTS



APARTMENTS  
WITH PRIVATE GARDENS  
OR ROOF TERRACES



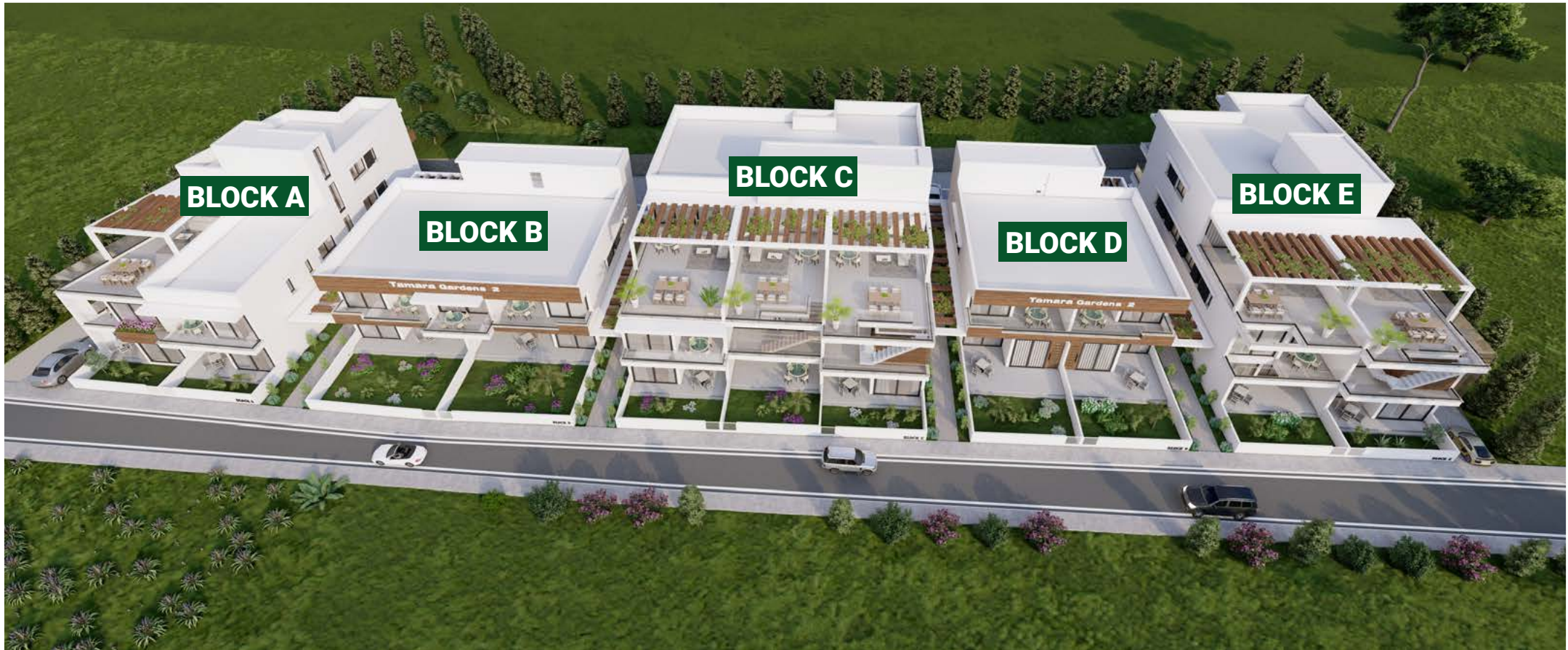
COMMON GYM



FEW MINUTES FROM  
LARNACA NEW MARINA  
& PORT



# MASS PLAN



# BLOCK A GROUND FLOOR

**A02** ▶

- 2 Bedrooms
- 2 Bathrooms
- 75 SQM Internal Area
- 15 SQM Covered Veranda
- 13.5 SQM Garden



◀ **A01**

# BLOCK A

## 1<sup>ST</sup> FLOOR

**A102**

2 Bedrooms  
2 Bathrooms  
75 SQM Internal Area  
15 SQM Covered Veranda

**A103**

2 Bedrooms  
2 Bathrooms  
80 SQM Internal Area  
12 SQM Covered Veranda



**A101**

# BLOCK A 2<sup>ND</sup> FLOOR



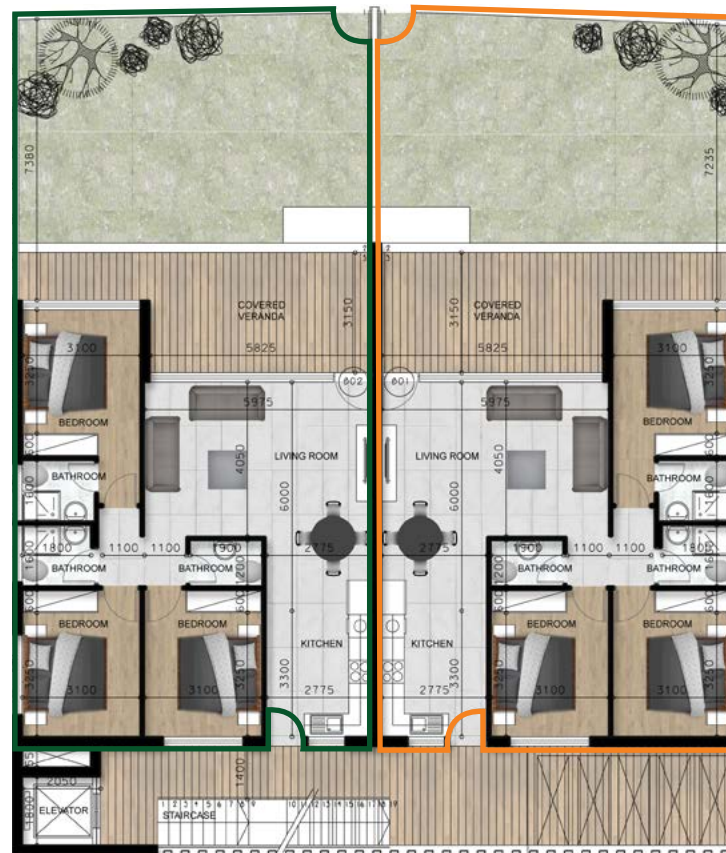
◀ **A201**

- 2 Bedrooms
- 2 Bathrooms
- 87 SQM Internal Area
- 16.5 SQM Covered Veranda
- 59.5 SQM Uncovered Veranda

# BLOCK B GROUND FLOOR

**B02**

3 Bedrooms  
3 Bathrooms  
100 SQM Internal Area  
25 SQM Covered Veranda  
58 SQM Garden



**B01**

3 Bedrooms  
3 Bathrooms  
100 SQM Internal Area  
25 SQM Covered Veranda  
58 SQM Garden

# BLOCK B 1<sup>ST</sup> FLOOR



# BLOCK C GROUND FLOOR

C02



C03



2 Bedrooms  
2 Bathrooms  
76 SQM Internal Area  
15 SQM Covered Veranda  
20 SQM Garden

C01



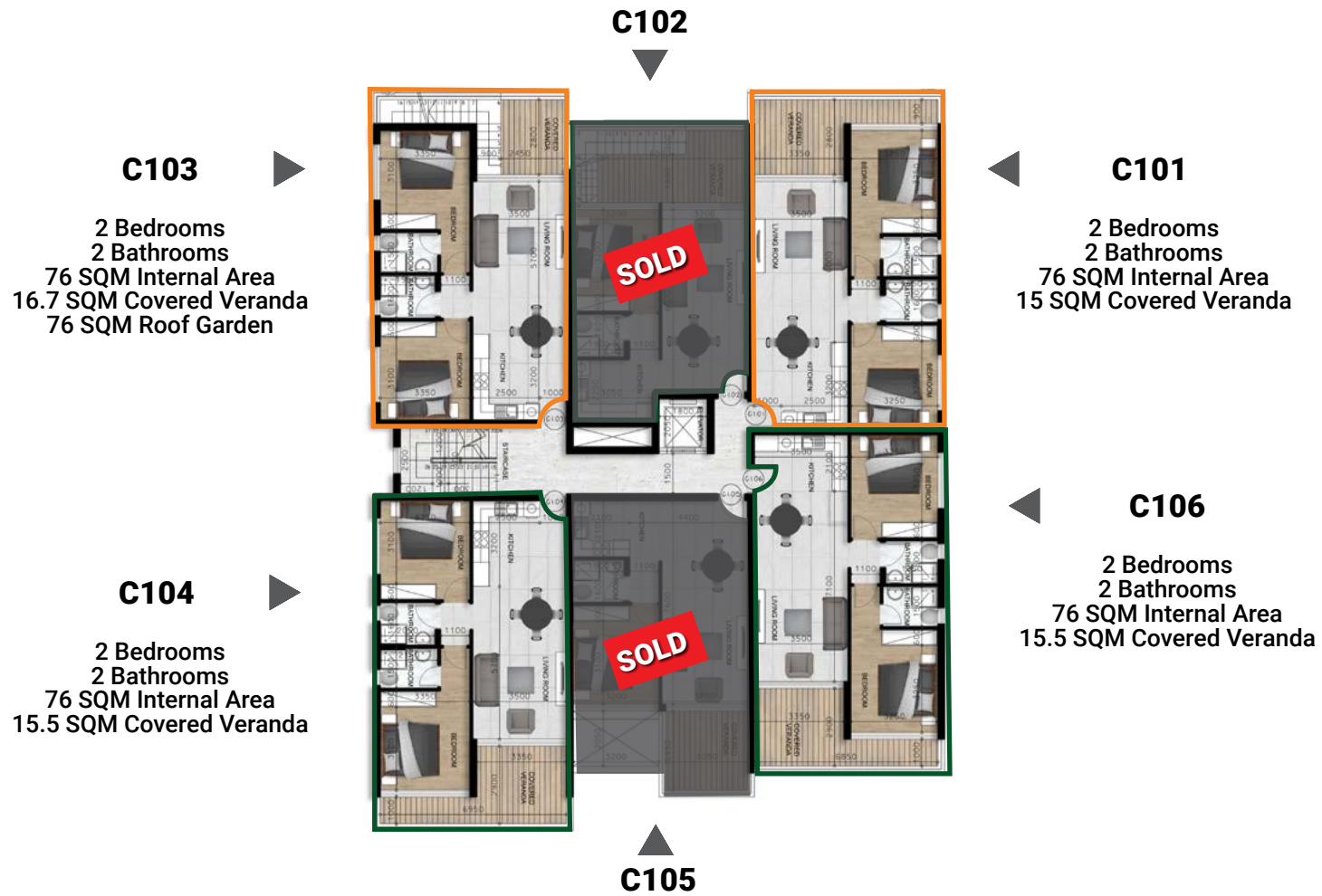
2 Bedrooms  
2 Bathrooms  
76 SQM Internal Area  
15 SQM Covered Veranda  
22 SQM Garden



Gym  
40 SQM Internal Area

# BLOCK C

## 1<sup>ST</sup> FLOOR



# BLOCK C 2<sup>ND</sup> FLOOR

**C103**  
76 SQM Roof Garden



**C102**

**SOLD**



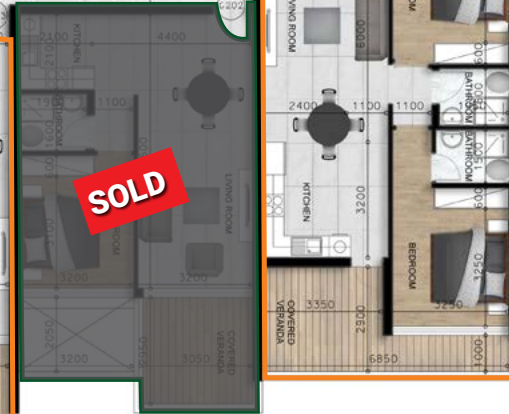
**C201**  
2 Bedrooms  
2 Bathrooms  
76 SQM Internal Area  
25.5 SQM Covered Veranda  
72.5 SQM Uncovered Veranda

**C203**  
2 Bedrooms  
2 Bathrooms  
76 SQM Internal Area  
15.5 SQM Covered Veranda



**C202**

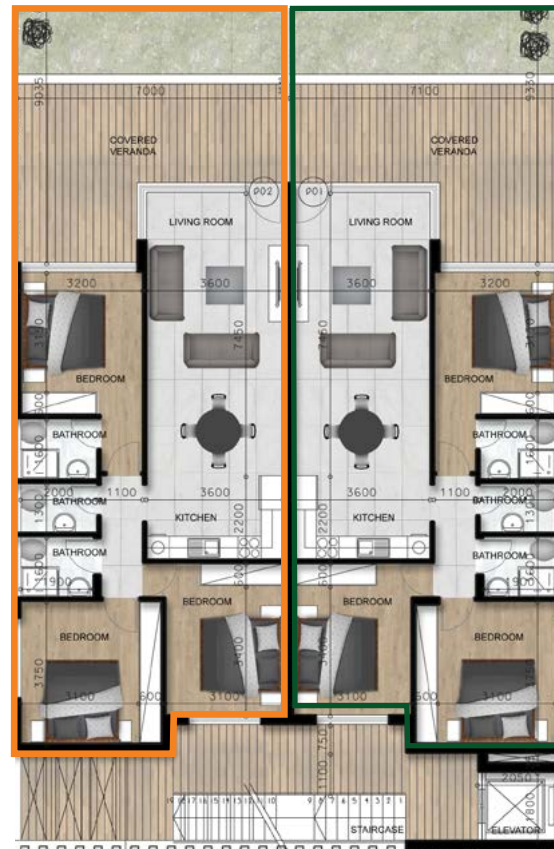
**SOLD**



# BLOCK D GROUND FLOOR

**D02**

3 Bedrooms  
3 Bathrooms  
100 SQM Internal Area  
12 SQM Covered Veranda  
34 SQM Garden



**D01**

3 Bedrooms  
3 Bathrooms  
100 SQM Internal Area  
12 SQM Covered Veranda  
36 SQM Garden

# BLOCK E GROUND FLOOR

**E02**

2 Bedroom  
2 Bathroom  
75 SQM Internal Area  
14.5 SQM Covered Veranda  
16 SQM Garden



**E01**

# BLOCK E

## 1<sup>ST</sup> FLOOR

**E102**

2 Bedrooms  
2 Bathrooms  
75 SQM Internal Area  
23 SQM Covered Veranda  
65.5 Roof Garden



**E101**

2 Bedrooms  
2 Bathrooms  
75 SQM Internal Area  
13.5 SQM Covered Veranda



**E104**

2 Bedrooms  
2 Bathrooms  
75 SQM Internal Area  
14.5 SQM Covered Veranda



**E103**

2 Bedrooms  
2 Bathrooms  
75 SQM Internal Area  
17 SQM Covered Veranda



# BLOCK E

## 2<sup>ND</sup> FLOOR

**E102** ▶  
65.5 Roof Garden



▶  
**E202**  
2 Bedrooms  
2 Bathrooms  
75 SQM Internal Area  
14.5 SQM Covered Veranda

◀ **E201**  
3 Bedrooms  
3 Bathrooms  
101 SQM Internal Area  
19 SQM Covered Veranda  
57 SQM Uncovered Veranda



The used pictures are for illustration purpose only

**Larnaca: +357 24 64 24 64**

**Limassol: +357 77 77 01 03**

**Lebanon: +961 1 900 000**

**UAE: +971 56 212 21 20**

**Bahrain: +973 3947 7727**

**Greece: +30 216 0014 672**



FOLLOW US



[info@pluspropertiescyprus.com](mailto:info@pluspropertiescyprus.com) | [www.pluspropertiescyprus.com](http://www.pluspropertiescyprus.com)