



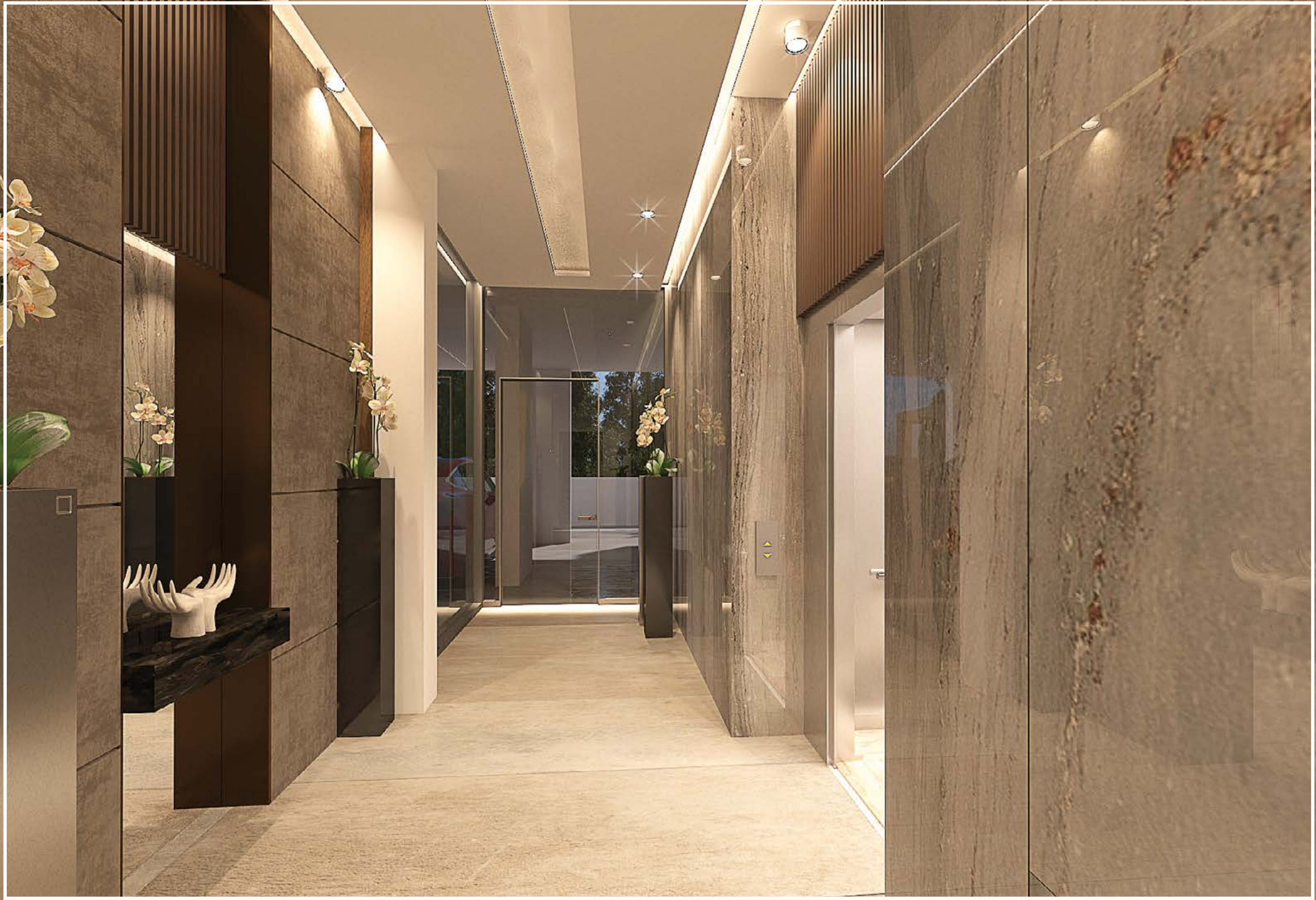
PLUS 33 by GC

UNIVERSAL - PAPHOS

UNDER-CONSTRUCTION

PLUS 33













401

301

302

201

202

SOLD

101

102



UNIVERSAL - PAPHOS

[CLICK HERE](#)

PLUS 33



**2-BEDROOM
APARTMENTS**



**PENTHOUSE WITH
LARGE TERRACE**



**FACING THE UNIVERSAL
ELEMENTARY SCHOOL**



**4 MINUTES FROM
AUB - PAPHOS CAMPUS**



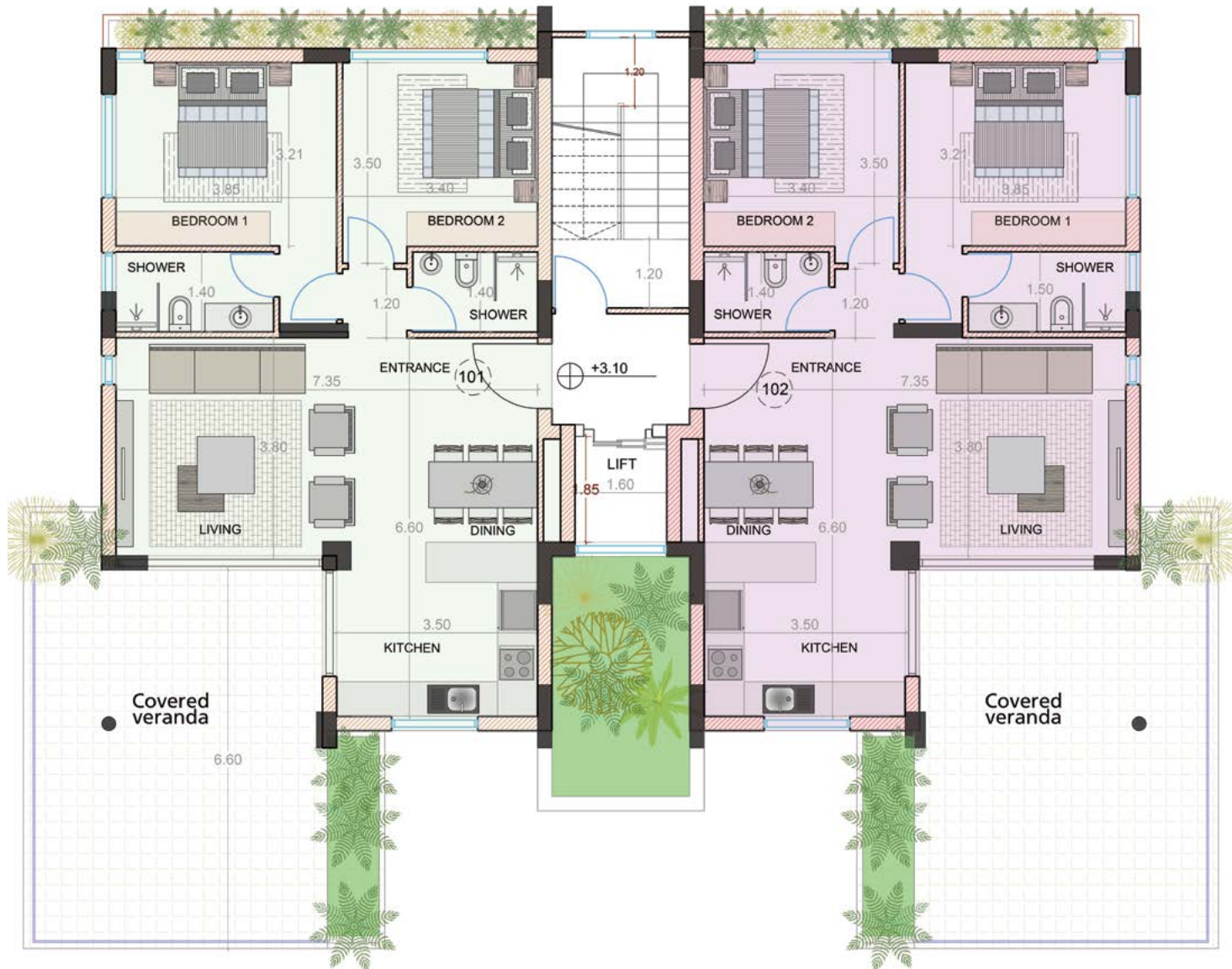
**6 MINUTES FROM
THE BEACH**

ENERGY EFFICIENCY CATEGORY: A

PLUS 33 by GC

1ST FLOOR

101
2 Bedrooms
2 Bathrooms
78 SQM Internal Area
35 SQM Covered Veranda



102
2 Bedrooms
2 Bathrooms
78 SQM Internal Area
35 SQM Covered Veranda

MITROPOLITOU IAKOVOU ANTZOULATOU STREET

SOPHIAS VEMPO STREET

13TH PRIMARY SCHOOL

PLUS 33 by GC

2ND FLOOR



MITROPOLITOU IAKOVOU ANTZOULATOU STREET

202

201

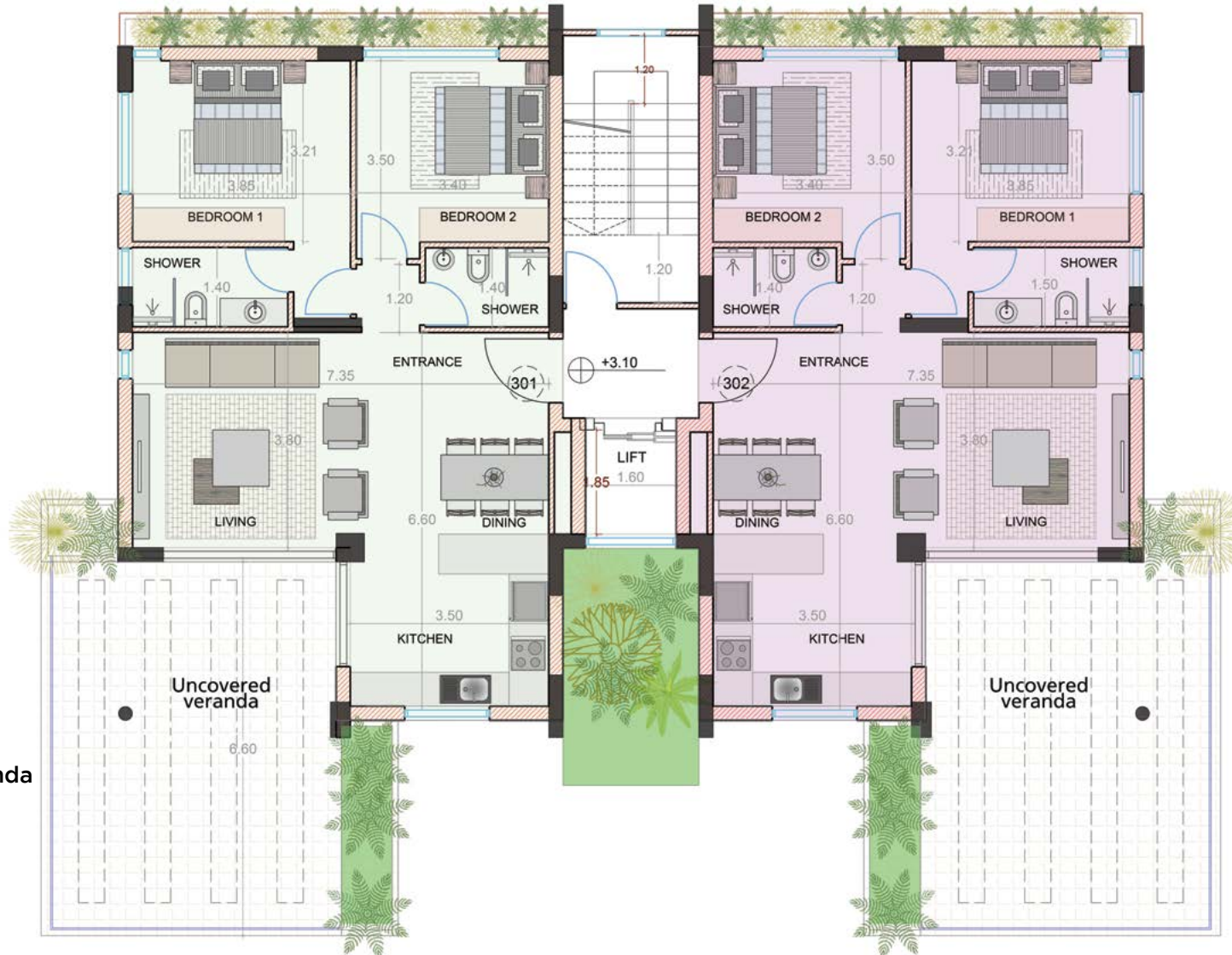
2 Bedrooms
2 Bathrooms
78 SQM Internal Area
35 SQM Covered Veranda

SOPHIAS VEMPO STREET

13TH PRIMARY SCHOOL

PLUS 33 by GC

3RD FLOOR



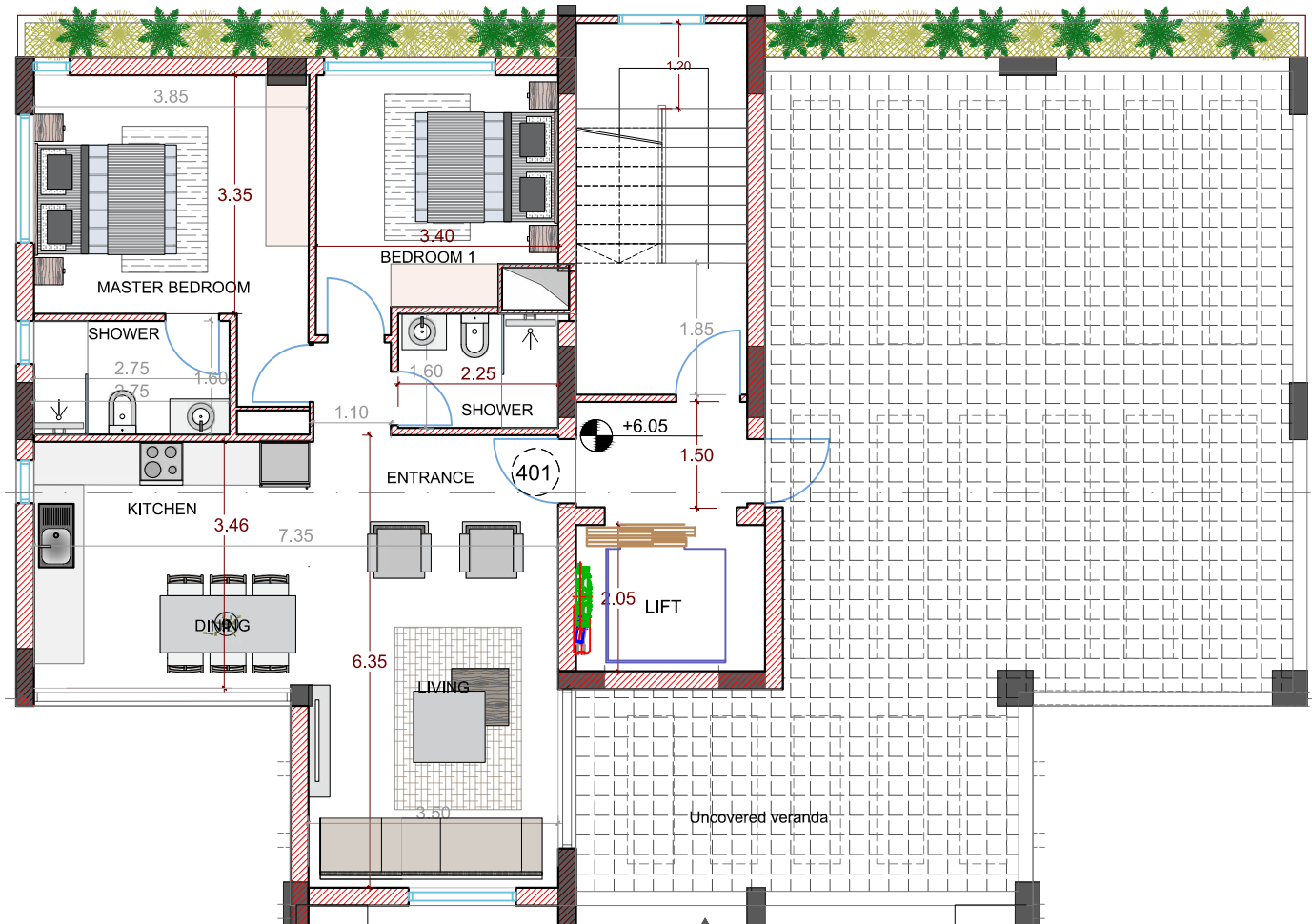
MITROPOLITOU IAKOVOU ANTZOULATOU STREET

301
2 Bedrooms
2 Bathrooms
78 SQM Internal Area
35 SQM Uncovered Veranda

302
2 Bedrooms
2 Bathrooms
78 SQM Internal Area
35 SQM Uncovered Veranda

SOPHIAS VEMPO STREET

13TH PRIMARY SCHOOL



MITROPOLITOU IAKOVOU ANTZOULATOU STREET

401

2 Bedrooms
2 Bathrooms
78 SQM Internal Area
87 SQM Uncovered Veranda

SOPHIAS VEMPO STREET

13TH PRIMARY SCHOOL



**CONSTRUCTION
IN PROGRESS...**



The used perspectives are for illustration purpose only

Larnaca: +357 24 64 24 64
Limassol: +357 77 77 01 03
Lebanon: +961 1 900 000
UAE: +971 56 212 212 0
Bahrain: +973 3947 7727
Greece: +30 216 0014 672

FOLLOW US



info@pluspropertiescyprus.com
www.pluspropertiescyprus.com

