

THE
PLAZA

A PIONEERING PROJECT SITUATED AT THE HEART OF PAPHOS.

Introducing a new development of luxury apartments in a prime location at the heart of Kato Paphos.

The Plaza is located just steps away from the sparkling Mediterranean sea. Nestled in a coveted address, these exquisite apartments offer an unrivaled lifestyle full of amenities and convenience.



PRIME LOCATION, ENDLESS POSSIBILITIES

Imagine waking up to breathtaking views of the sea, feeling the gentle sea breeze, and strolling along the sandy beaches at your leisure. With the prime convenient location and meticulous attention to detail in the modern design, each apartment provides a sanctuary of elegance and comfort.

THE PLAZA

At 6 levels above ground and with captivating contemporary architecture, The Plaza can easily be seen and identified throughout the city. The development enjoys spacious living areas, floor-to-ceiling windows that invite natural light, and private balconies where you can relax and soak in the panoramic vistas. This exceptional development allows you to embrace a luxurious seaside lifestyle, where the sounds of the waves and the beauty of the sea become an integral part of your everyday life.

DESIGN, CONCEPT, QUALITY, SERVICE





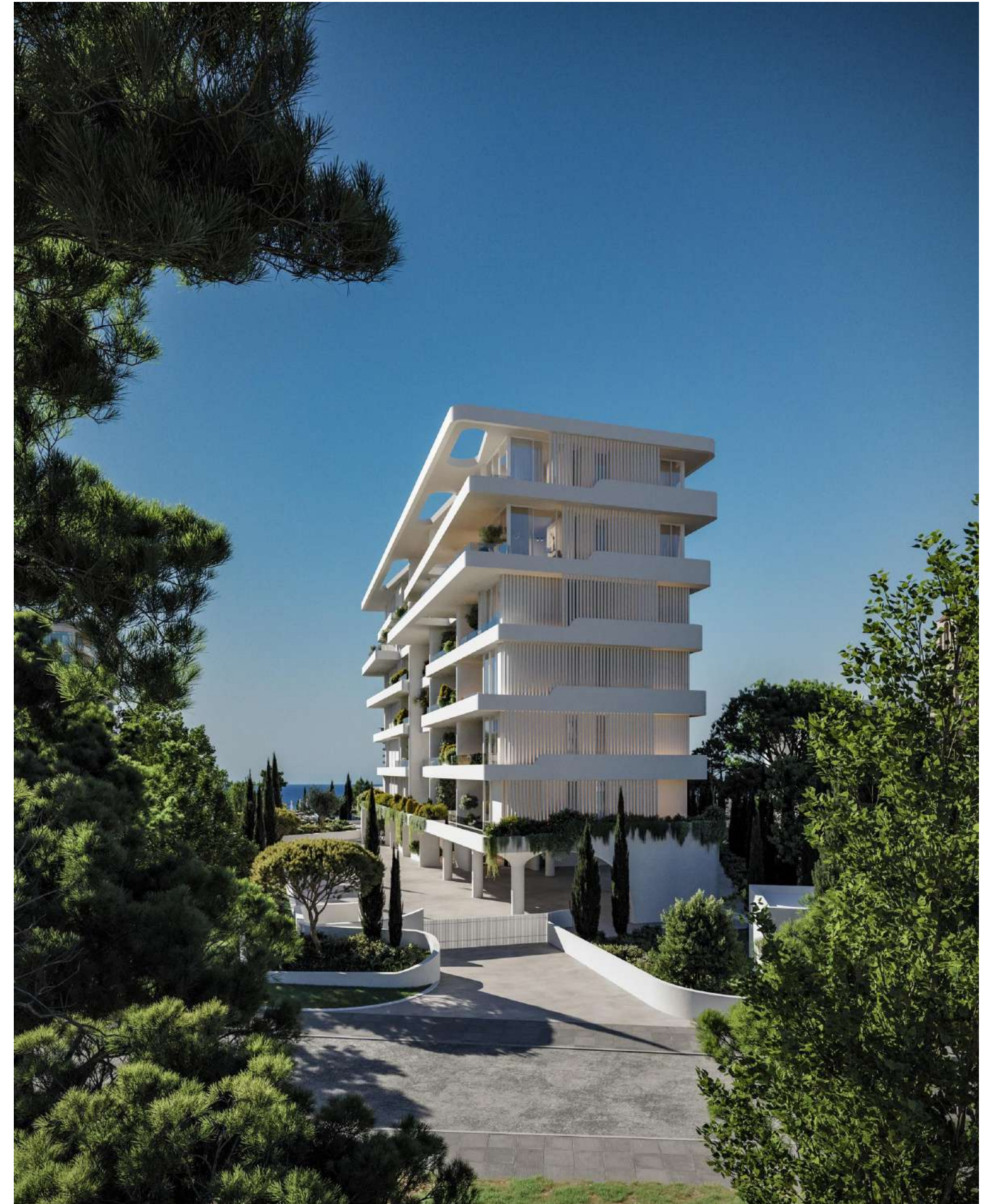
HIGHLIGHTS & SPECIFICATIONS

1. Prime central location
2. Breathtaking unobstructed sea views
3. Private communal swimming pool and sun deck
4. Expansive balconies and covered terraces
5. Elevator (x2) to all floors
6. Underfloor heating
7. Concealed VRV system
8. Privately owned covered parking and storage space
9. High quality materials and finishes
10. Commercial area on ground floor

THE PLAZA

The ground floor of The Plaza will be full of leisure facilities for lifestyle and convenience. Planned facilities including a gym, coffee shop and boutique stores. There is a beautiful private communal pool and sundeck for the residents surrounded by landscaped gardens.

THIS IS MODERN LIVING IN THE CITY AT ITS FINEST.



VIEWS TO THE SEA



BLOCK A LEVELS FROM THE SEA

Ground Floor	+31.64
First Floor	+35.74
Second Floor	+39.19
Third Floor	+42.64
Fourth Floor	+46.09
Fifth Floor	+49.54
Sixth Floor	+52.99

BLOCK B LEVELS FROM THE SEA

Ground Floor	+32.24
First Floor	+35.74
Second Floor	+39.19
Third Floor	+42.64
Fourth Floor	+46.09
Fifth Floor	+49.54
Sixth Floor	+52.99

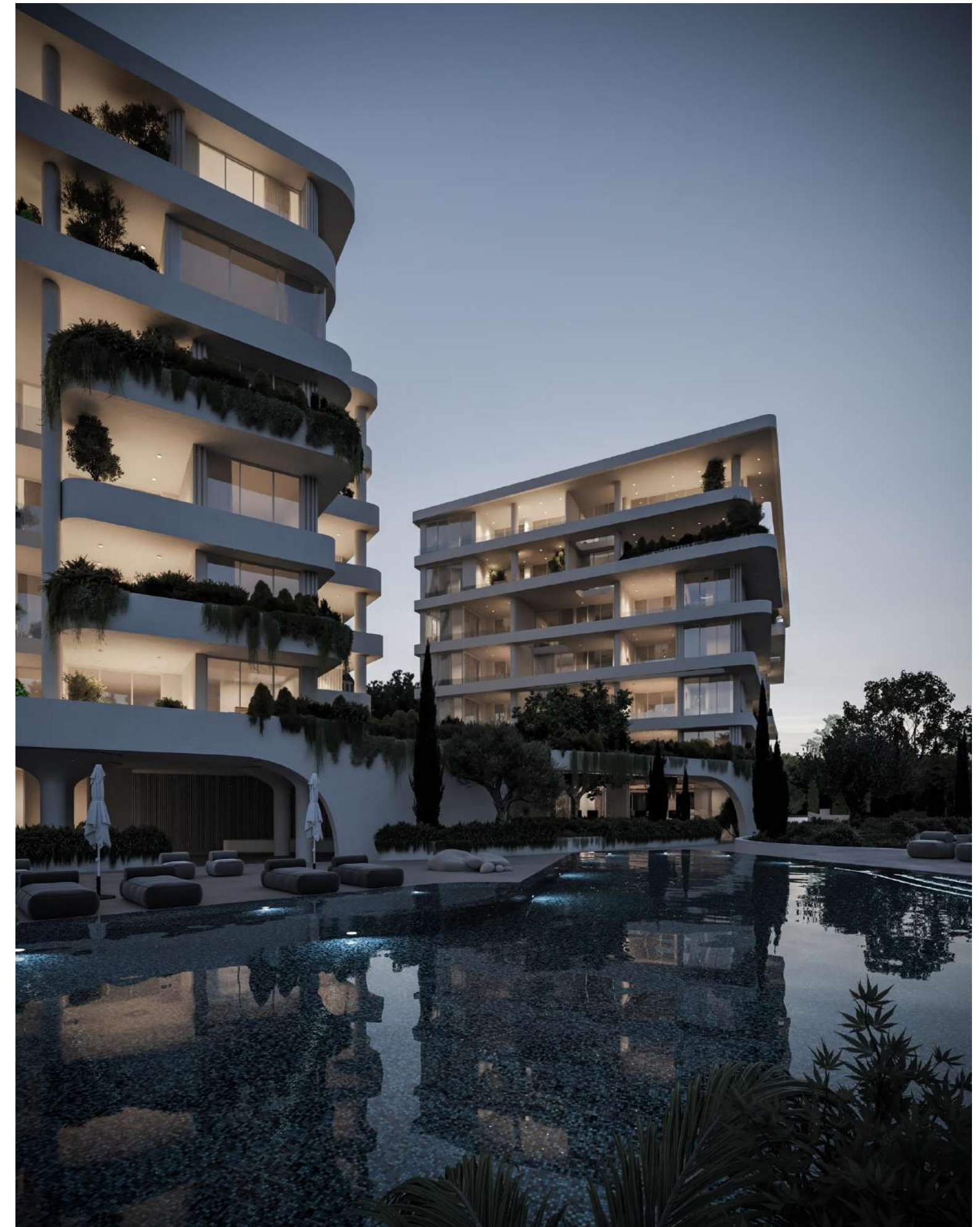
4TH FLOOR PANORAMA



APARTMENTS & PENTHOUSES

Inside the apartments and penthouses are finished to exacting standards using contemporary materials that enhance the spacious open plan layouts. The modern luxurious finishes include underfloor heating (penthouses), concealed VRV systems, Italian designed kitchens with corian surfaces, all purposefully designed to provide modern minimal aesthetics.

- Studios from 50 sqm | Prices from €213,000 +VAT
- 1 bedroom from 84 sqm | Prices from €380,000 +VAT
- 2 bedroom from 116 sqm | Prices from €492,000 + VAT
- 3 bedroom from 194 sqm | Prices from €1,050,000 +VAT
- Penthouse 3 bedroom from 242 sqm | Prices from €1,400,000 +VAT



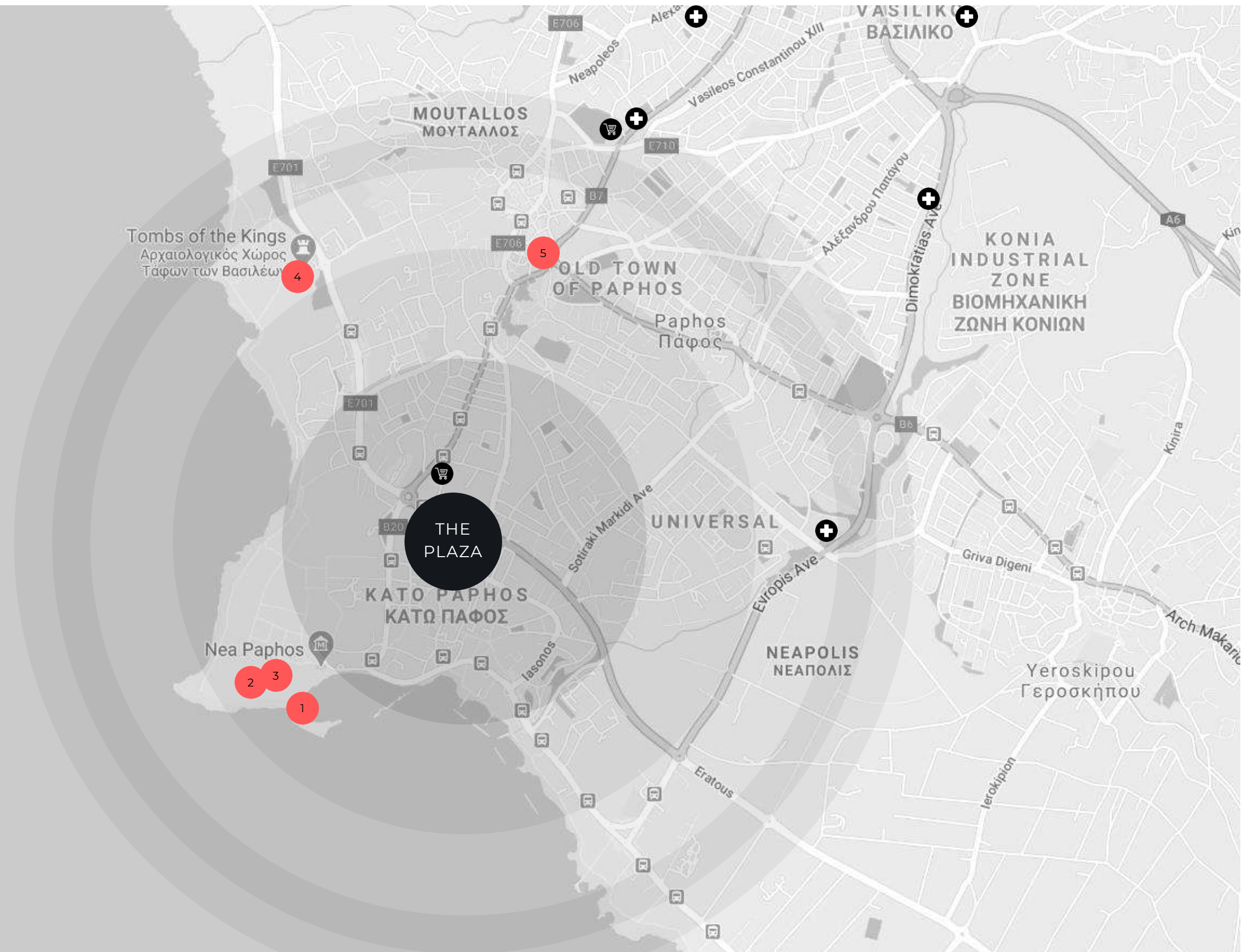
PLACES OF INTEREST

1. Paphos Castle
2. Kato Paphos Archeological Park
3. Paphos Mosaics
4. Tomb of the Kings
5. Town Centre

A GREAT LOCATION

Shopping 3mins
Town Center 6mins
Hotels 4mins
Highway 10mins
Beach 4mins
Bank 3mins
Port 3mins
Paphos airport 12mins
Larnaka airport 80mins
Troodos 73mins
Limassol 40mins
Nicosia 95mins

-  PRIVATE SCHOOLS
-  SUPERMARKETS
-  HOSPITALS



LOCAL AREA

ARIEL VIEW FROM THE PLAZA PLOT



ANTASIA
BEACH CLUB

ALMYRA
HOTEL

ANNABELLE
HOTEL

MUNICIPAL
BATHS

SEASIDE
RESTAURANTS
AND CAFES

PAPHOS
PROMENADE

PAPHOS
CASTLE

LOCAL AREA

ARIEL VIEW FROM THE PLAZA PLOT

TOMB OF THE
KINGS

PAPHOS
ARCHAEOLOGICAL
PARK

PAPHOS
LIGHTHOUSE

FABRICA
HILL

LIGHTHOUSE
BEACH

TOMB OF THE
KINGS AVENUE

KINGS AVENUE
MALL

ELYSIUM
HOTEL





PROJECT AMENITIES



Light House Beach
1.2km
15 minutes walk



Alpha Mega
Supermarket
850m
11 minutes walk



Seafront Promenade
800m
10 minutes walk



Paphos International
Airport
16km
20 minutes by car



Kings Avenue
Shopping Mall
500m
8 minutes walk



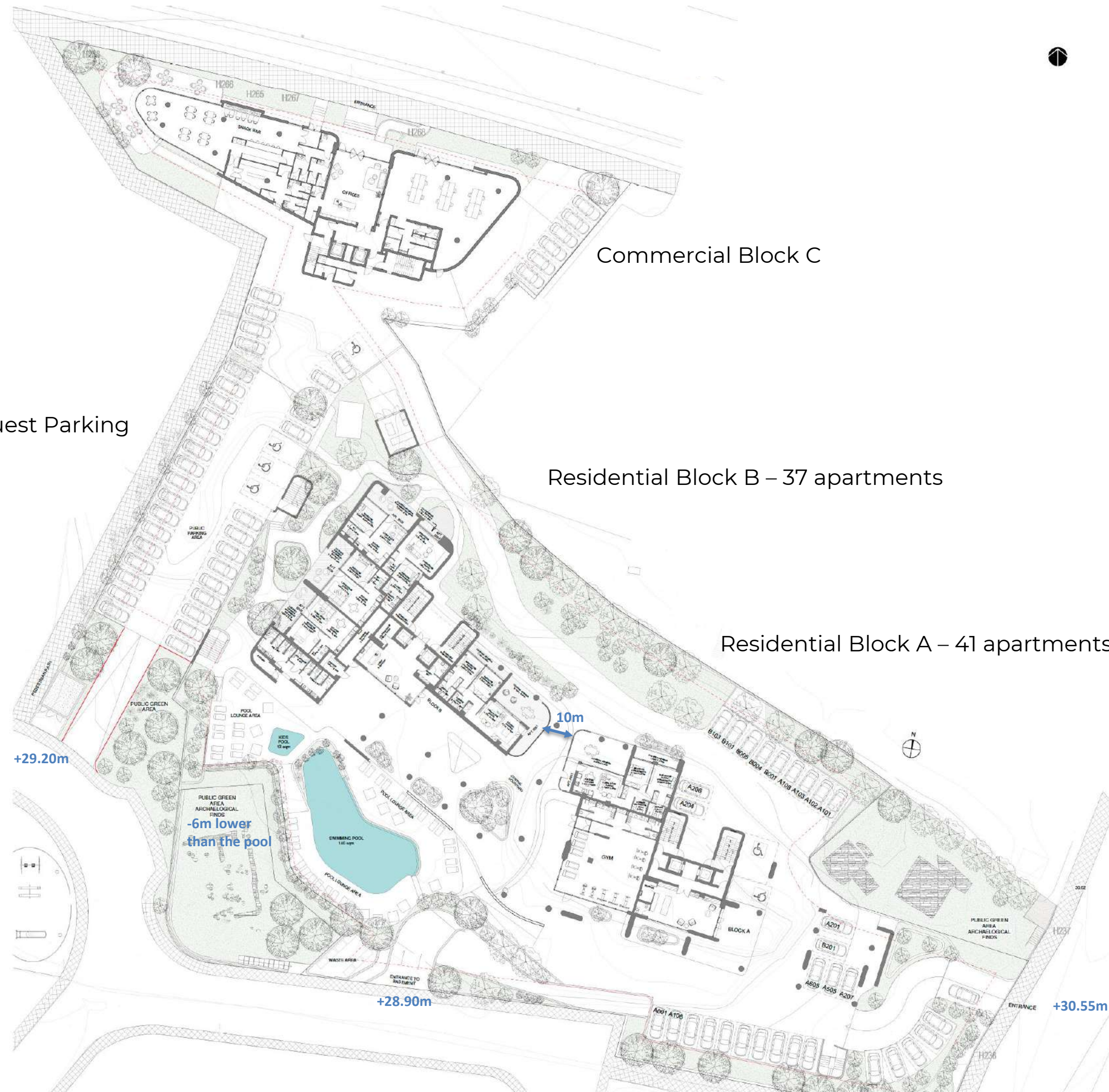
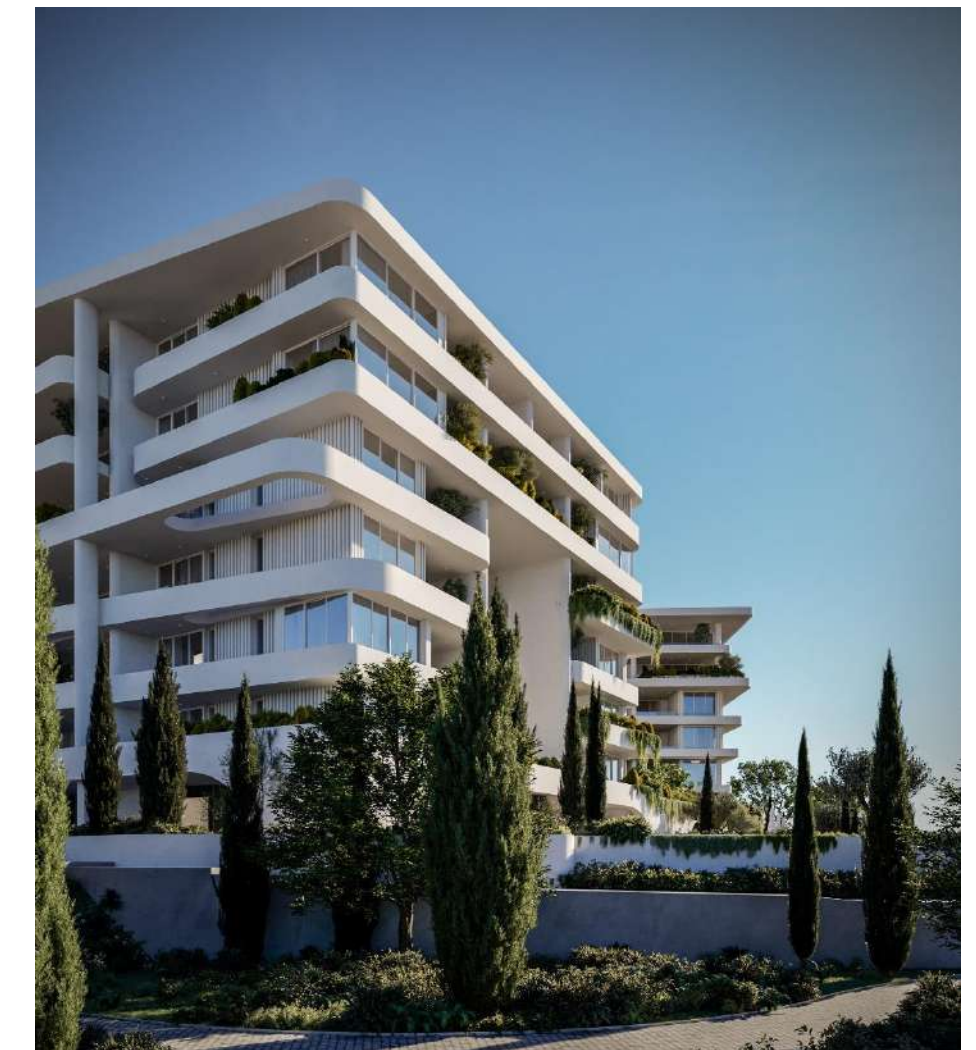
Minthis
– lifestyle resort
14km
20 minutes by car



MASTERPLAN

LEVELS

Main Entrance	+30.55
Ground Floor Parking	+31.60
Swimming pool	+32.65
Block A Ground Floor	+31.60
Block B Ground Floor	+32.25
Public Green / Archelocigal Finds	+26.50



Guest Parking

Commercial Block C

Residential Block B – 37 apartments

Residential Block A – 41 apartments

+29.20m

-6m lower than the pool

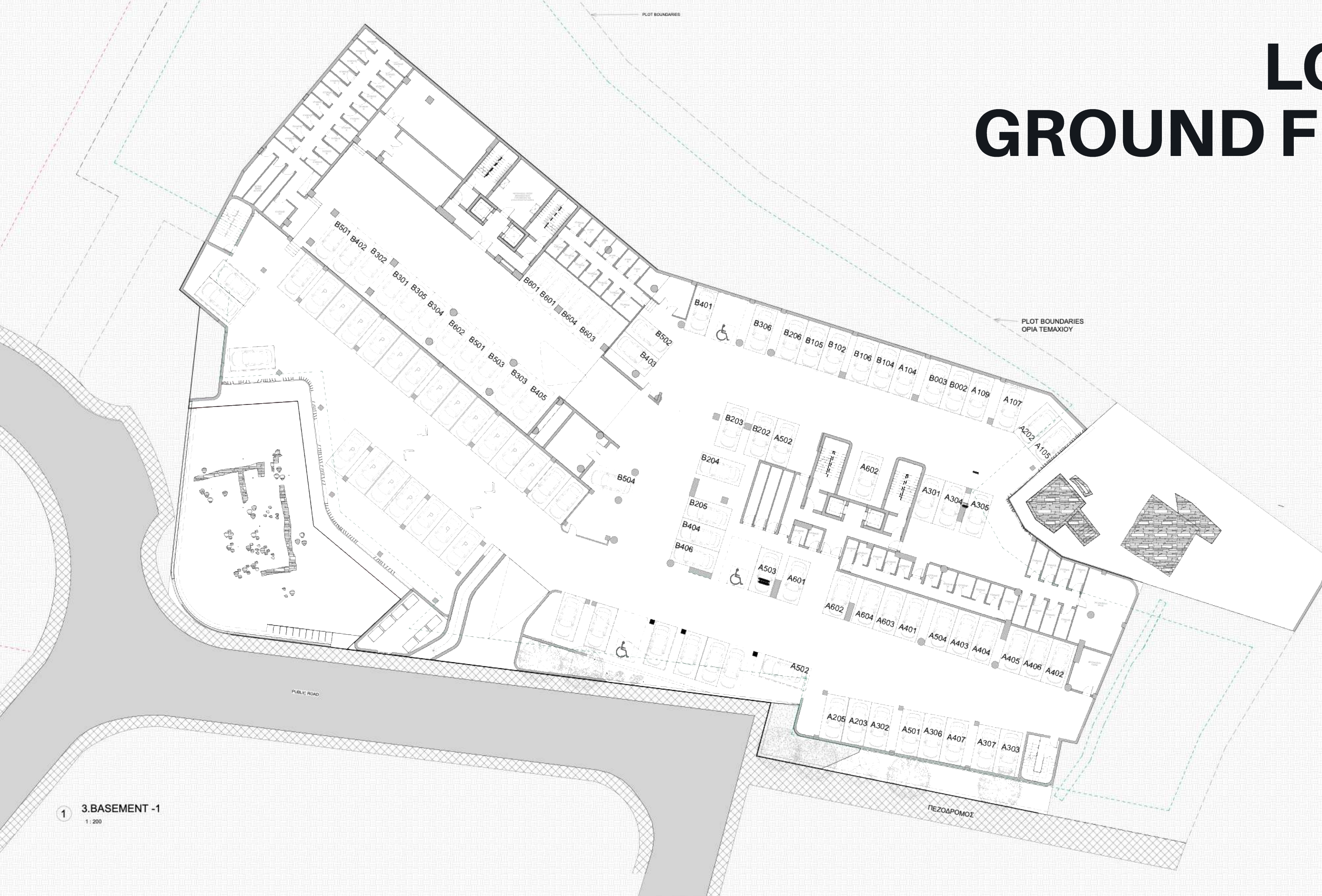
+28.90m

10m

+30.55m

Communal Playground

LOWER GROUND FLOOR



1 3.BASEMENT -1
1:200

ELEVATION



1 SOUTH ELEVATION- BLOCK A
1 : 200

ARIEL VIEW



A RICH HISTORY

During the development and excavation process, significant archaeological remains were uncovered, including a medieval hydraulic installation (well) and an extensive Roman-period residence. Located at the eastern and western edges of the site, these discoveries are of major historical importance to Paphos — a town proudly recognised as part of a UNESCO World Heritage Site.

Importantly, the archaeological remains are situated along the eastern and western boundaries of the site, allowing the core development to proceed without compromise.

Our company is proud of its Paphos roots and committed to preserving Cyprus's cultural heritage and has worked closely with the relevant authorities to ensure these findings are protected and respectfully integrated into the project. Their preservation not only enriches the development but also reflects our enduring respect for the island's history — offering residents and visitors a meaningful connection to centuries of cultural legacy, right on their doorstep.





THE PLAZA

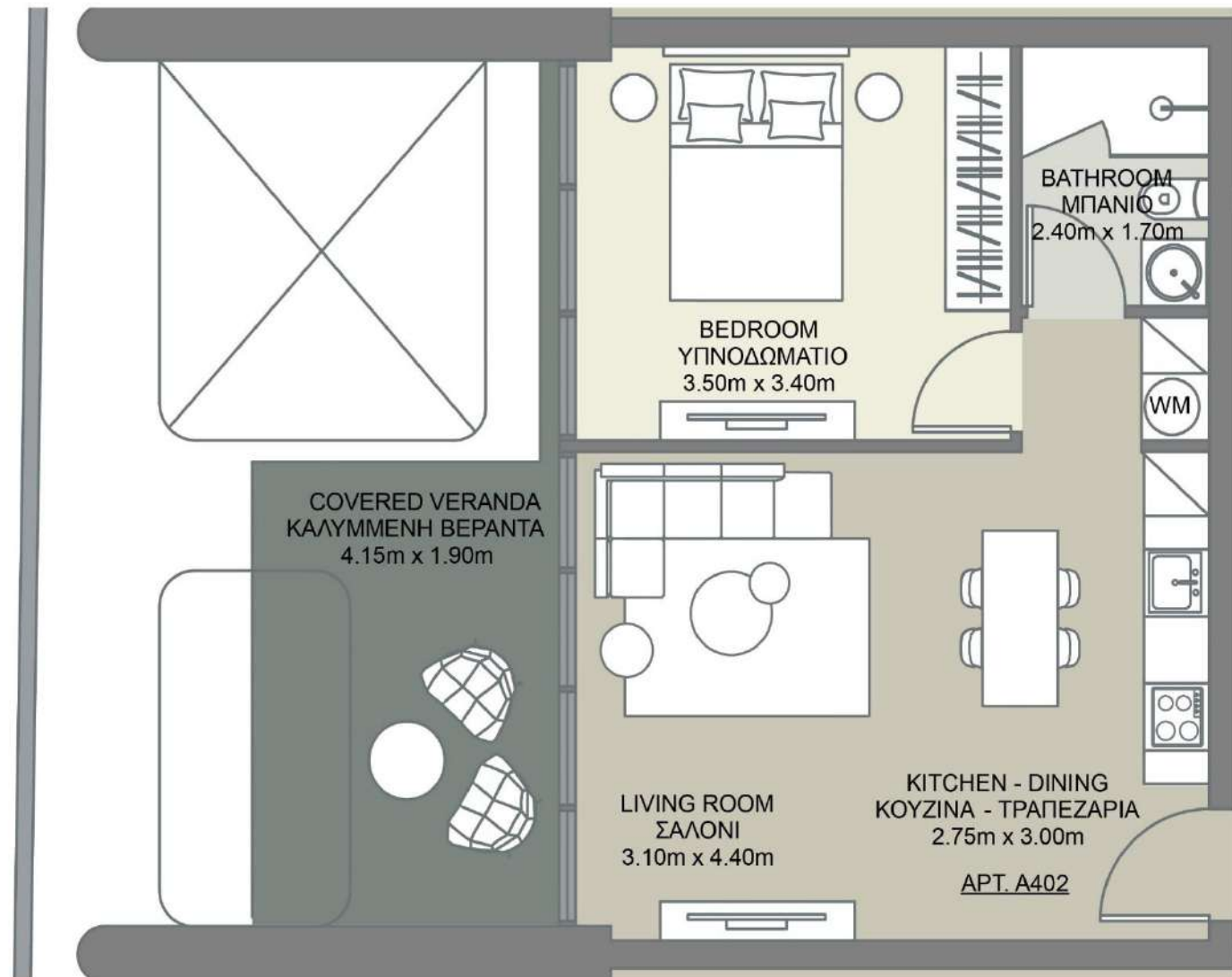
BLOCK A & BLOCK B

TYPICAL STUDIO LAYOUT





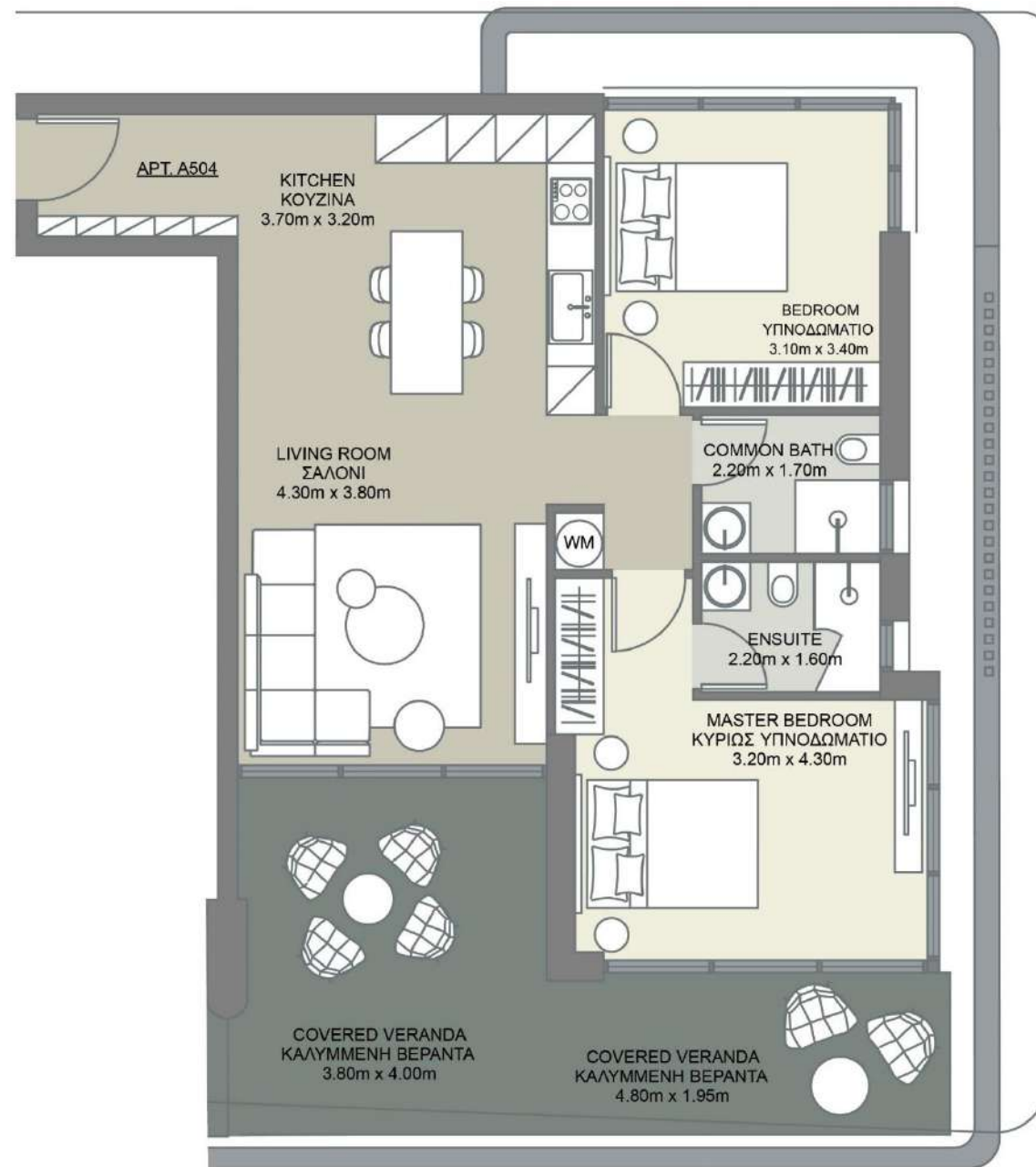
TYPICAL ONE BEDROOM LAYOUT





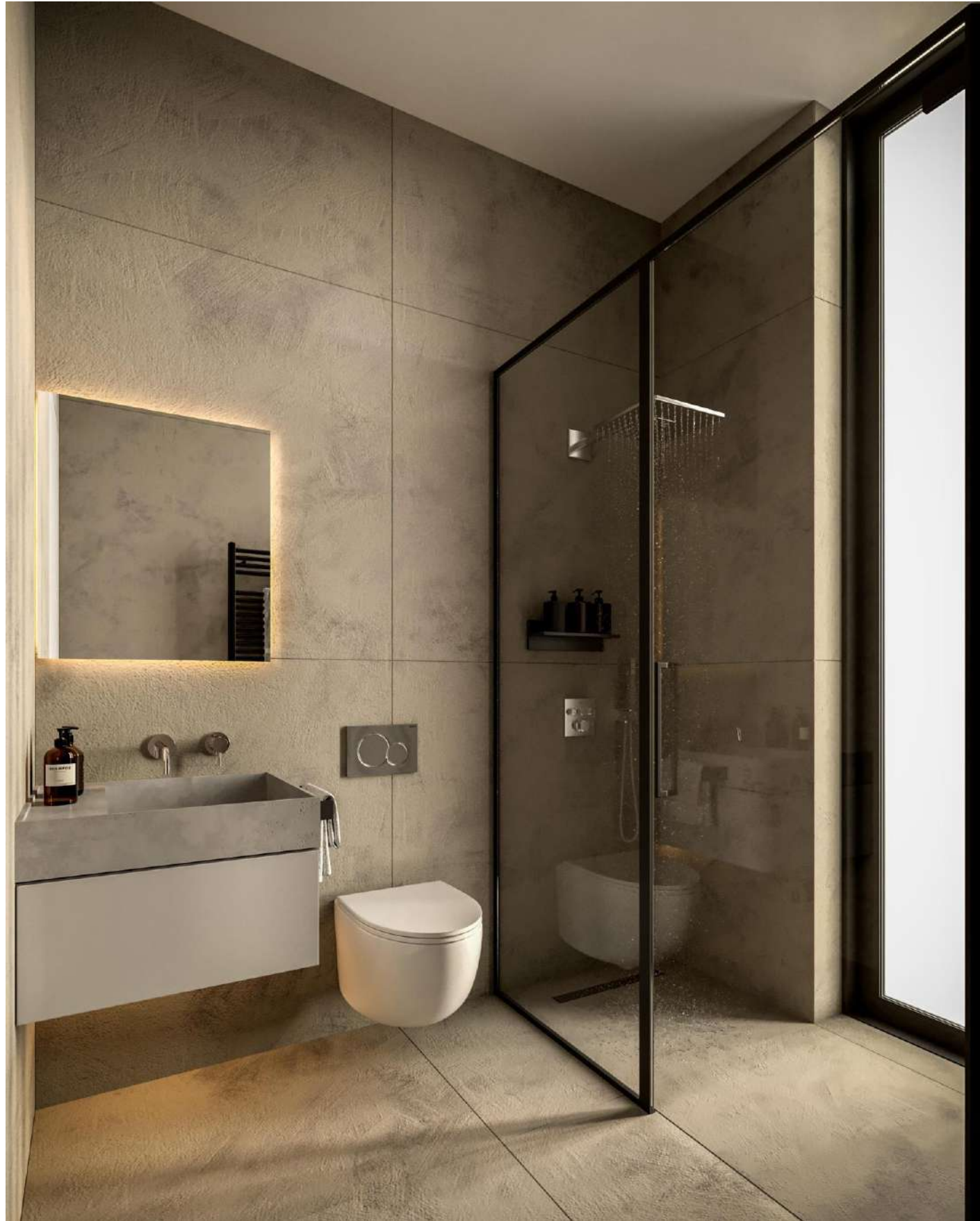


TYPICAL TWO BEDROOM LAYOUT

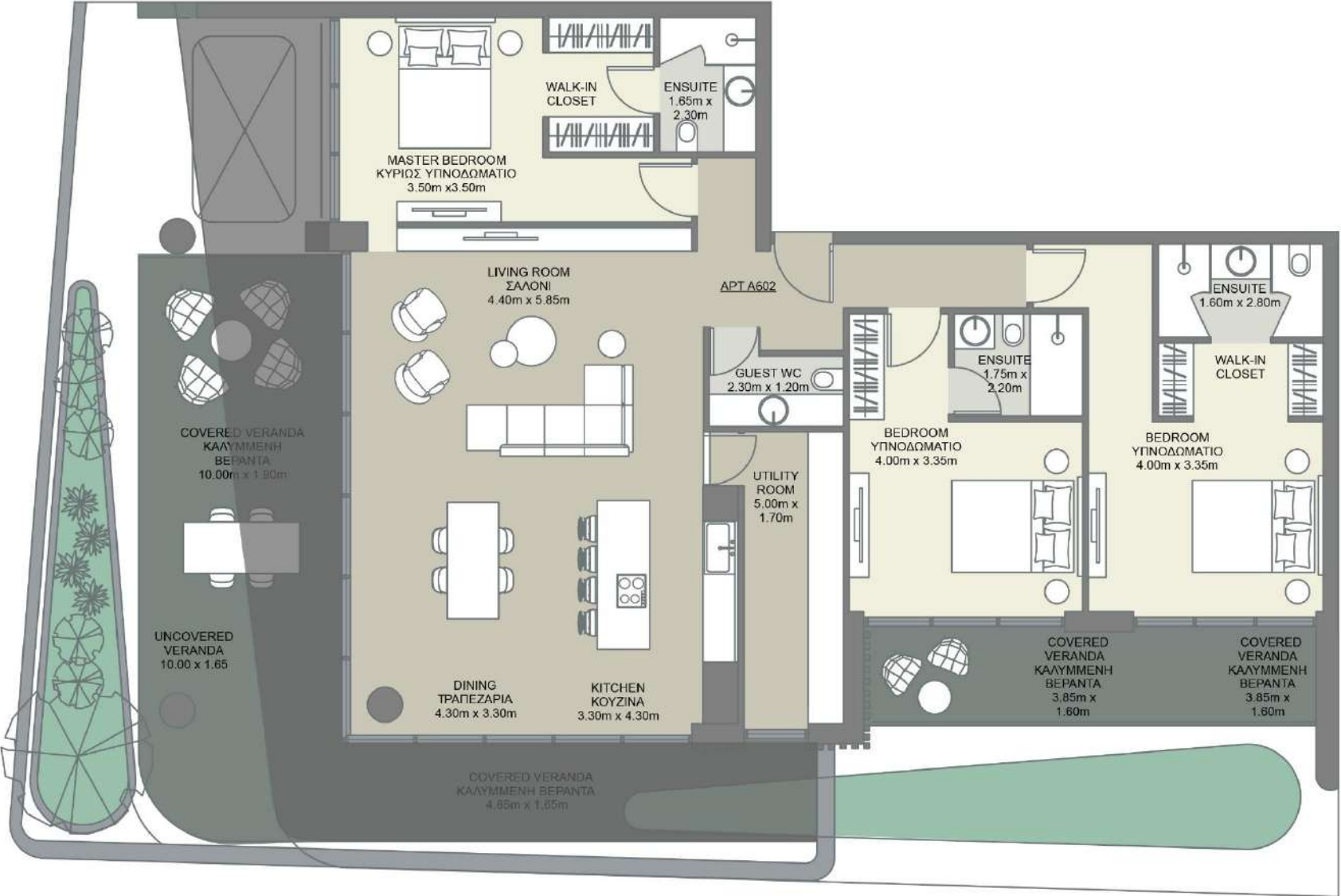








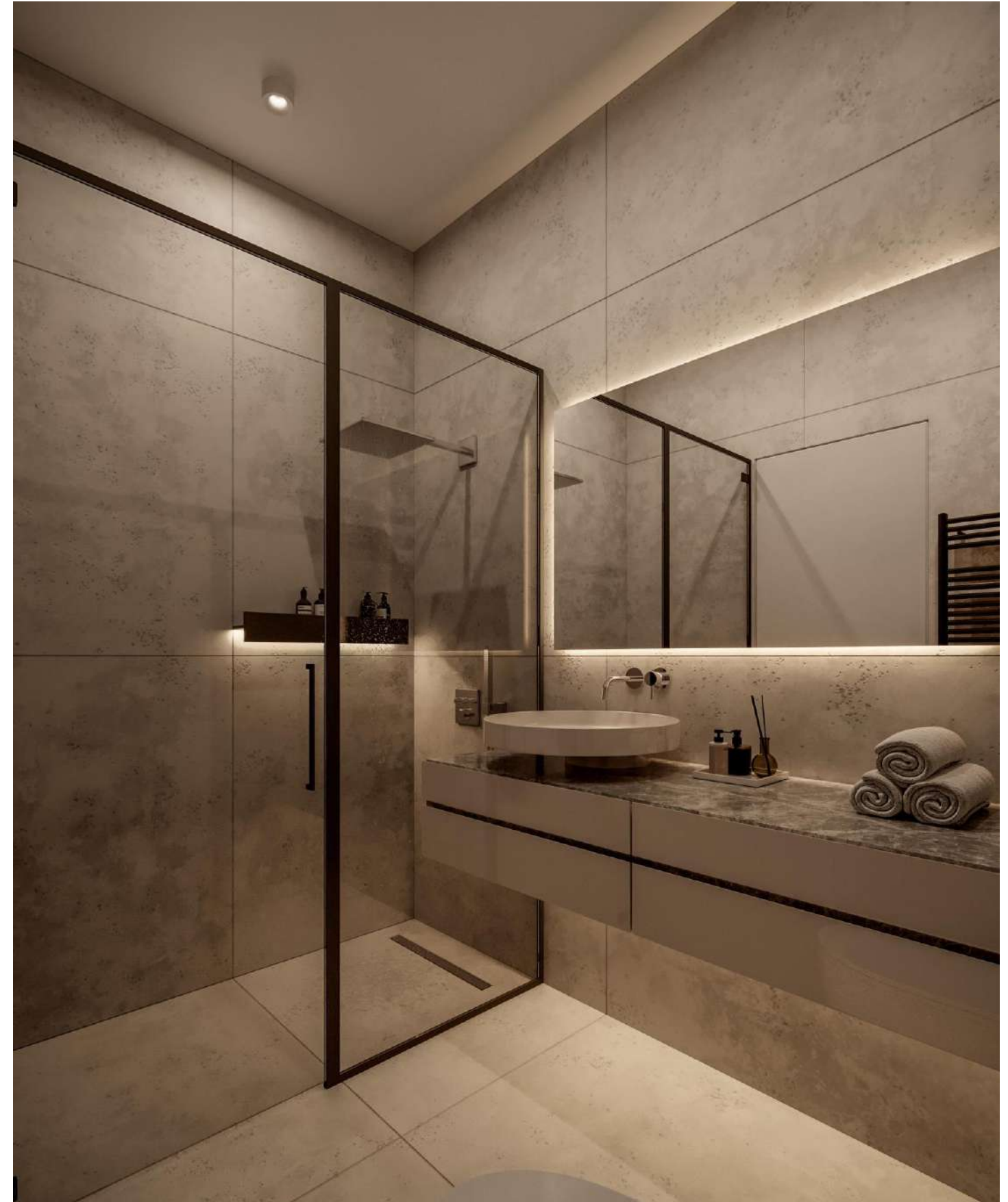
TYPICAL THREE BEDROOM PENTHOUSE LAYOUT

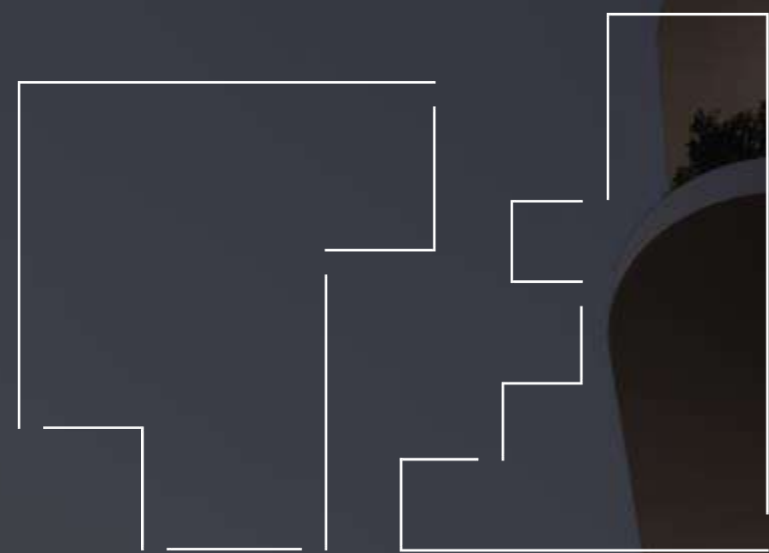








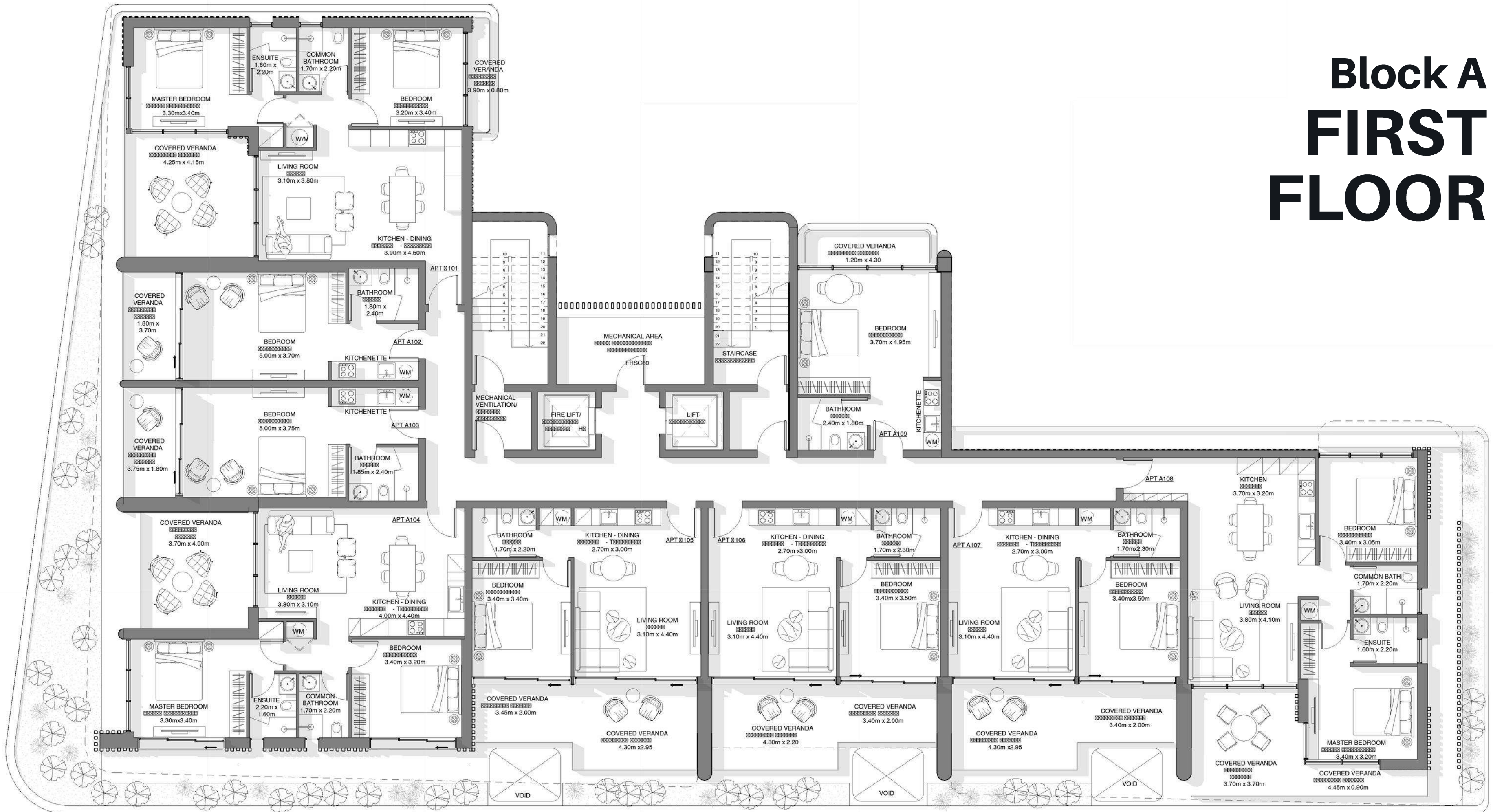




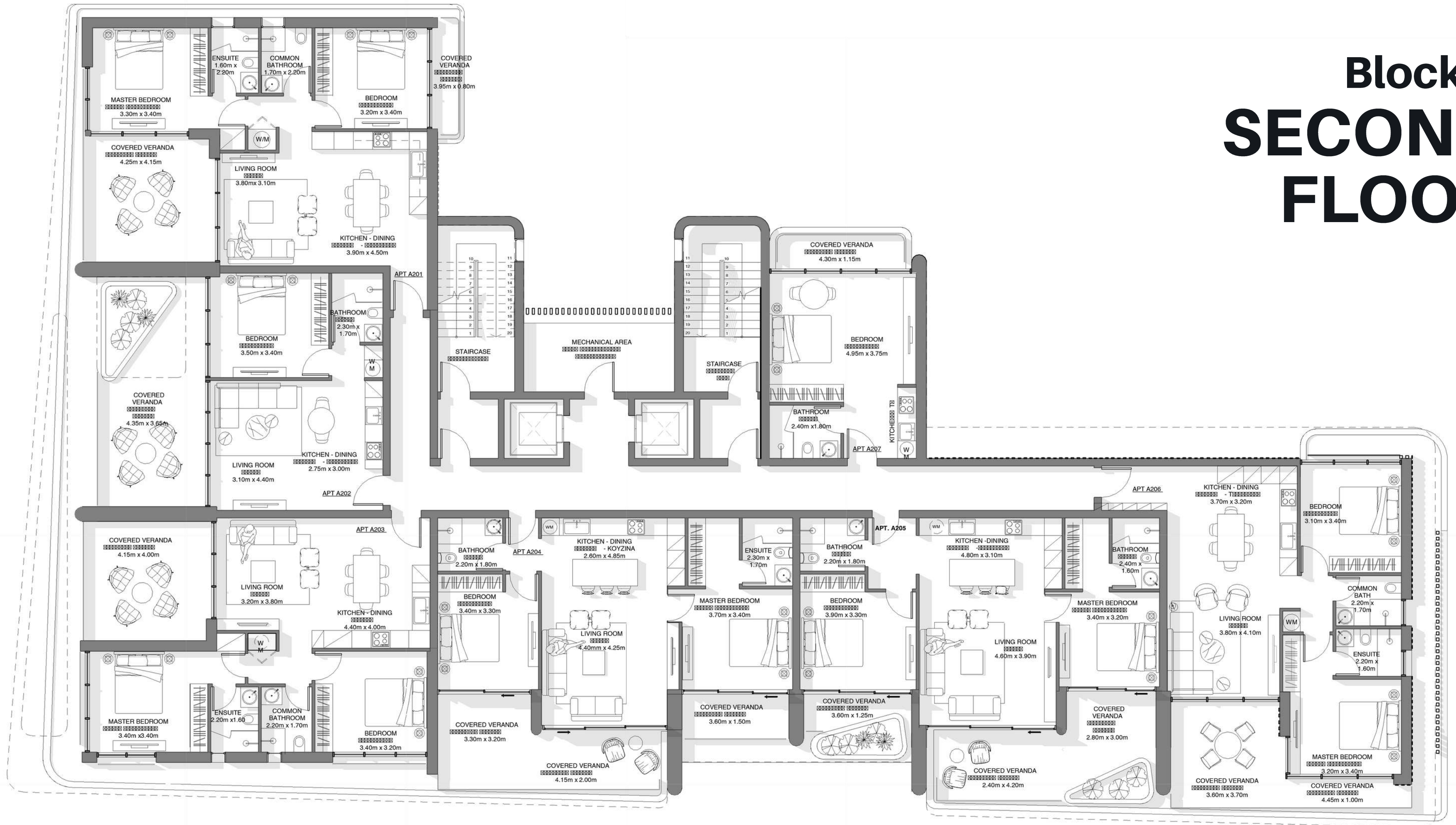
THE PLAZA

BLOCK A FLOORPLANS

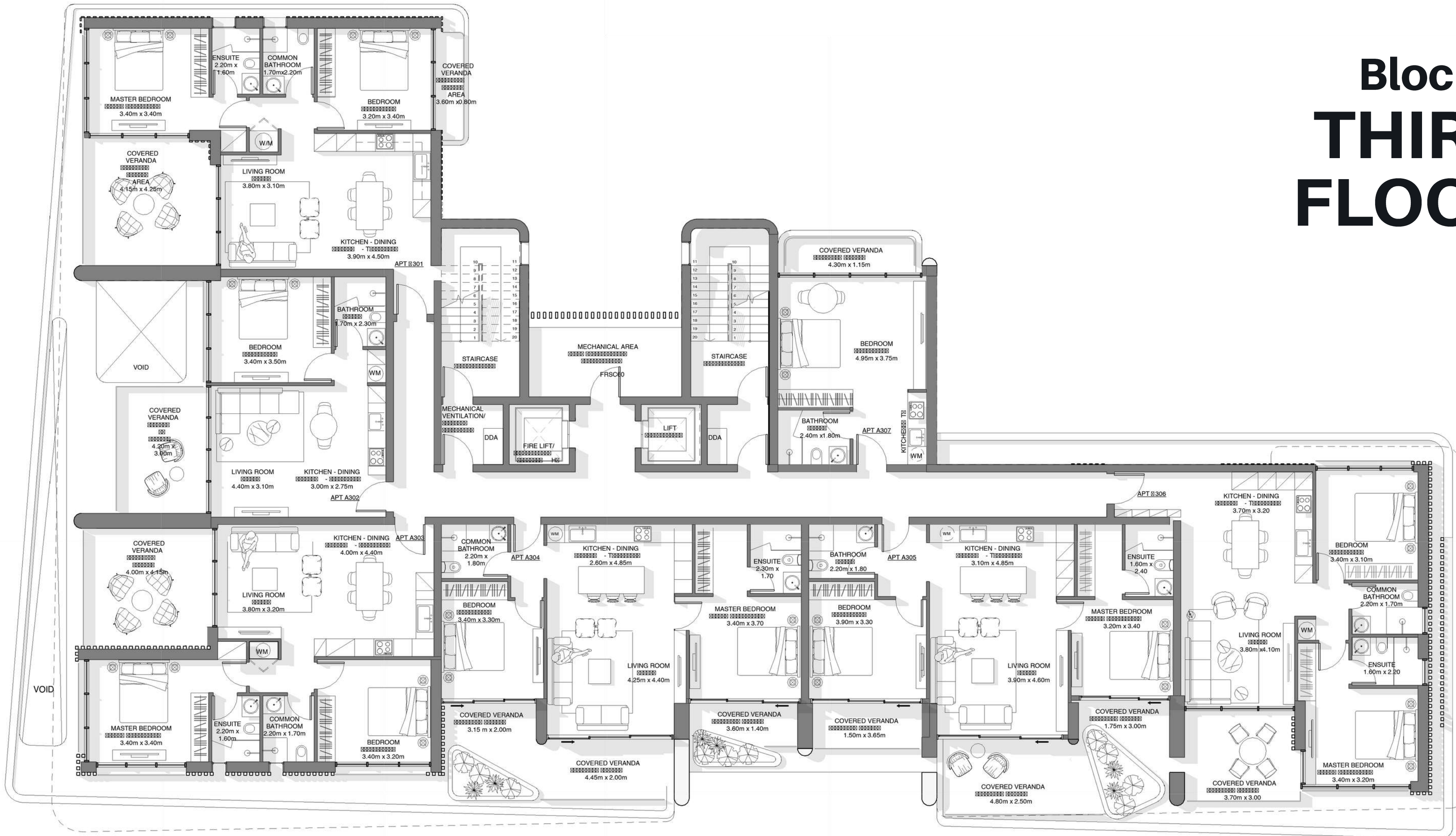
Block A FIRST FLOOR



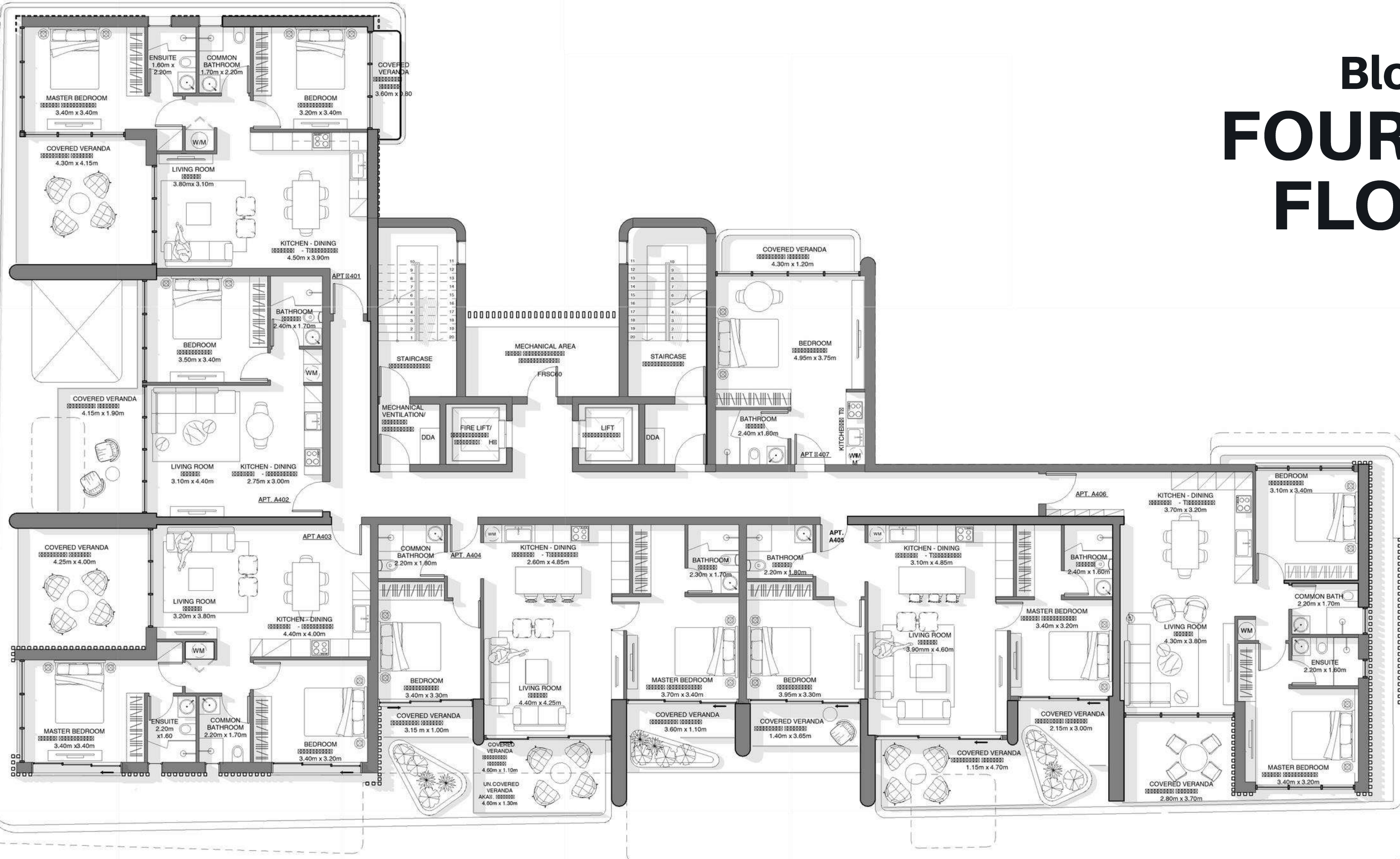
Block A SECOND FLOOR



Block A THIRD FLOOR



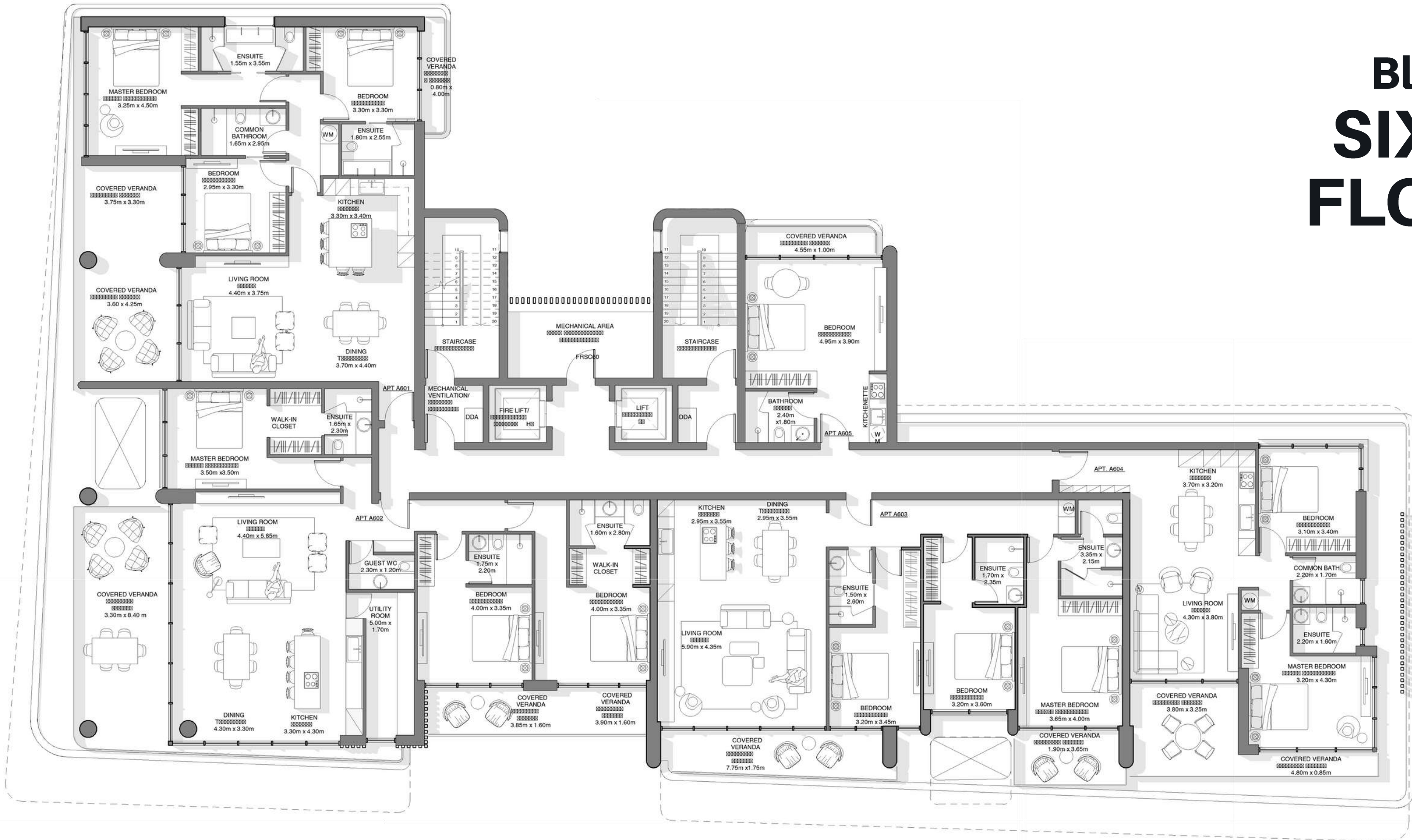
Block A FOURTH FLOOR

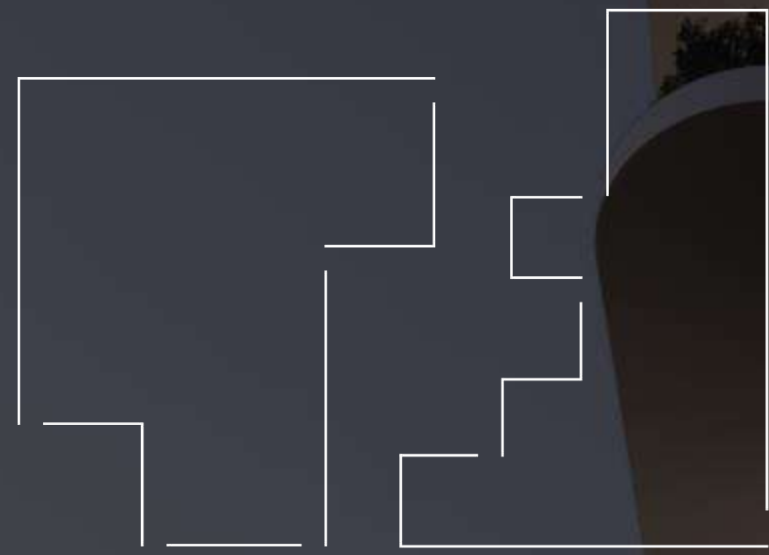


Block A FIFTH FLOOR



Block A SIXTH FLOOR

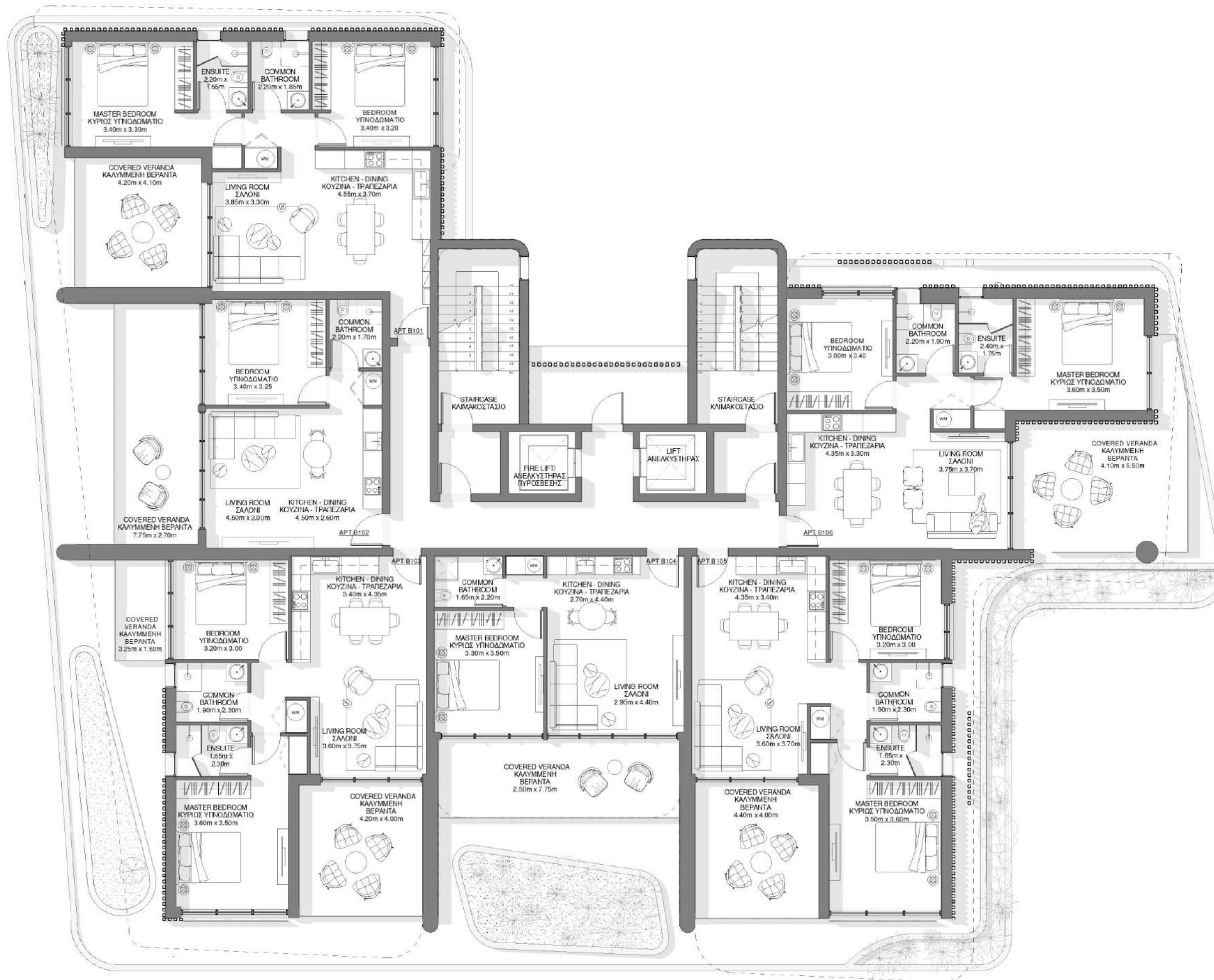




THE PLAZA

BLOCK B FLOORPLANS

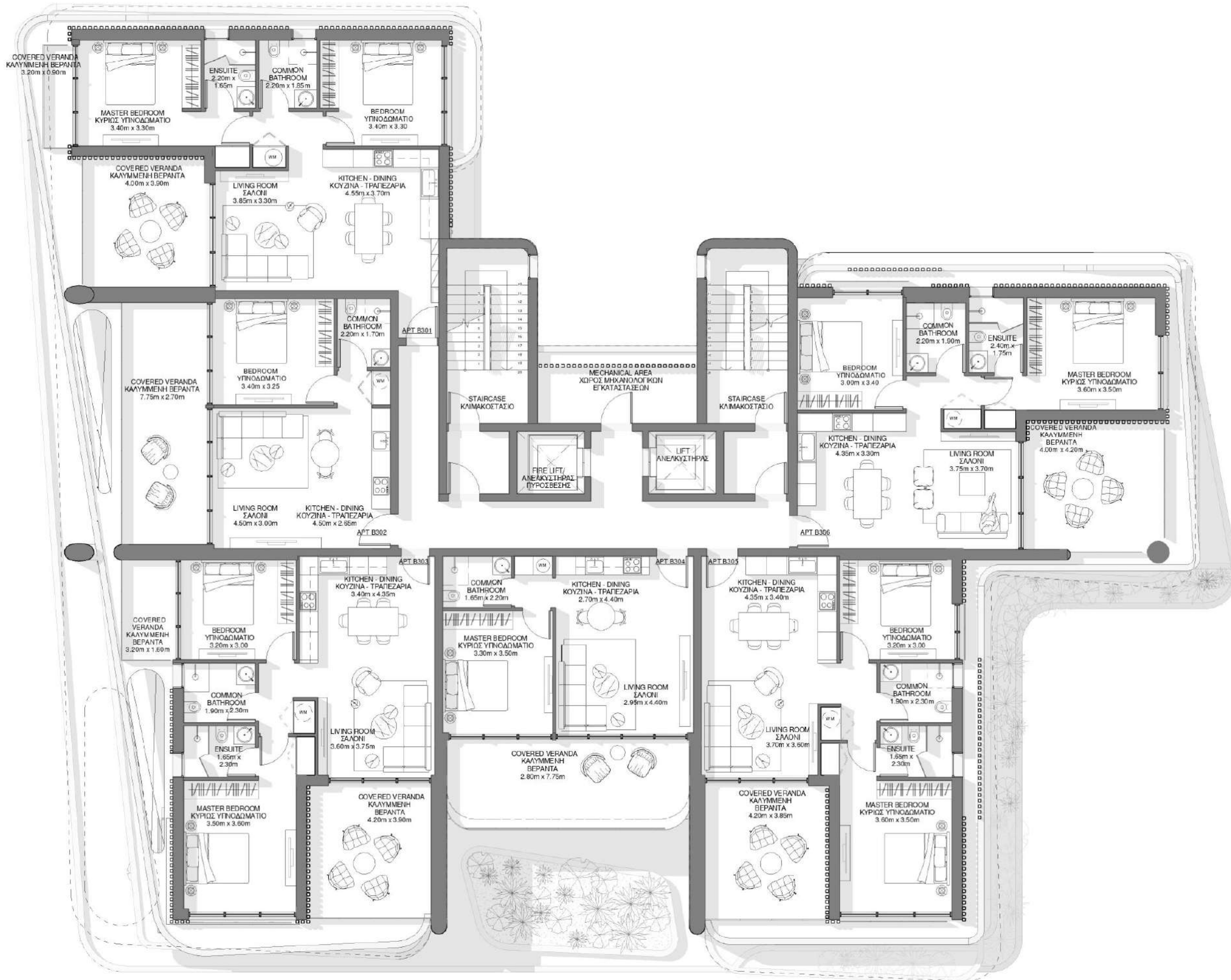
Block B FIRST FLOOR



Block B SECOND FLOOR



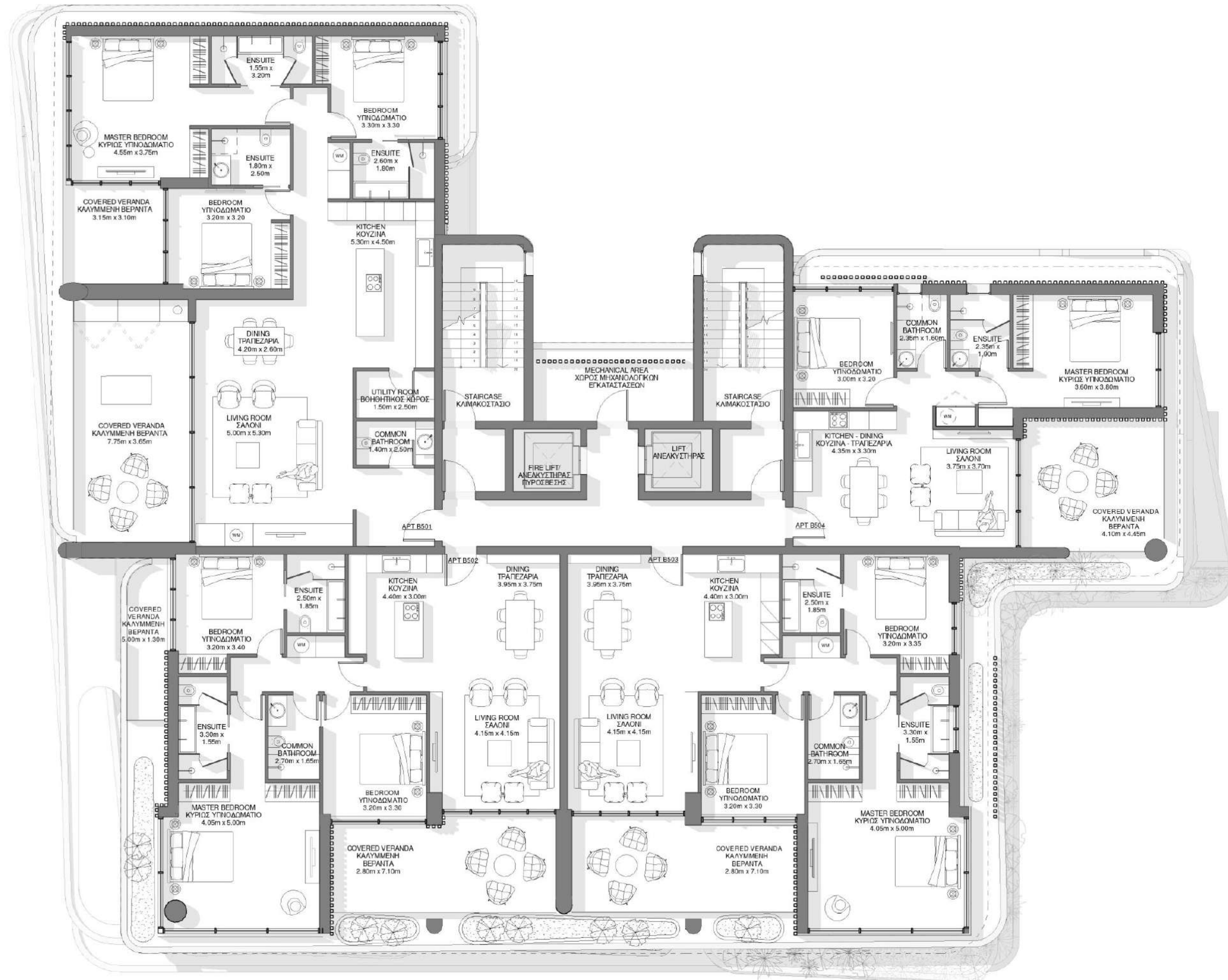
Block B THIRD FLOOR



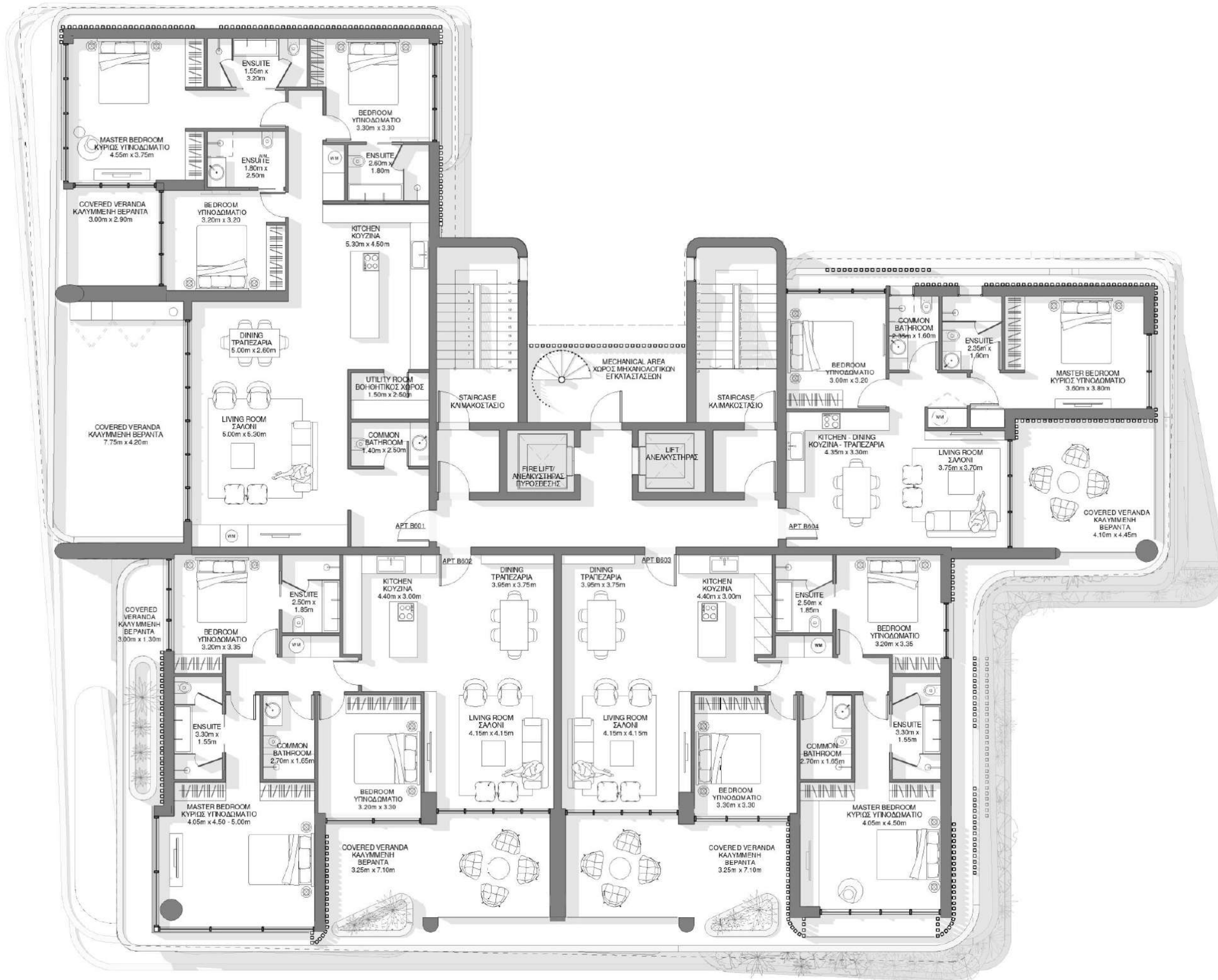
Block B FOURTH FLOOR



Block B FIFTH FLOOR



Block B SIXTH FLOOR



PAPHOS

THE CITY OF BEAUTY

Paphos, with its charming harbour and medieval fort, offers cosmopolitan living, beautiful scenery and significant historical sites. It was the capital of Cyprus for 600 years in ancient times and its archaeological legacy is such that UNESCO put the whole town on its World Cultural Heritage list.



PAPHOS

MEDITERRANEAN LIFESTYLE

Paphos, offers an enchanting Mediterranean lifestyle that captivates residents and visitors alike. Immerse yourself in a relaxed and vibrant atmosphere where time seems to slow down and its for relaxation and pleasure. Enjoy leisurely strolls along the scenic promenade of the harbour or discover the beach bars, there is a vast array of cafes, restaurants and bars where you can savor the aroma of freshly brewed coffee or enjoy the mouthwatering flavors of traditional Cypriot cuisine.

The Old Town area is full of charm and is a maze of narrow winding streets lined with traditional Cypriot buildings adorned with colorful shutters and blooming bougainvillea. The Old Town is also home to a vibrant market where you can browse local handicrafts, fresh produce, and traditional delicacies. With its delightful blend of history, culture, and authentic local charm, Paphos is a destination and can offer a wonderful Mediterranean lifestyle.



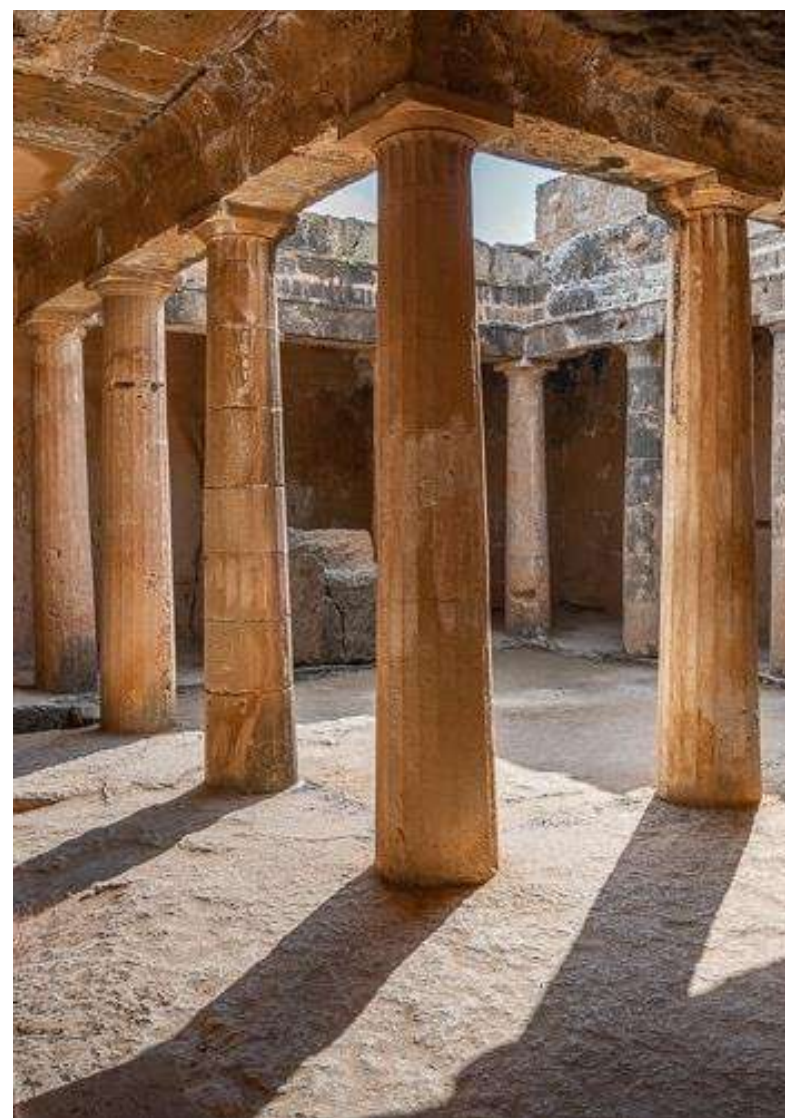
PAPHOS

Paphos' historic city charm is complemented by a vast array of stunning beaches. The Mediterranean's crystal-clear turquoise waters invite you to take a refreshing dip or soak up the sun on golden shores. Paphos boasts an array of breathtaking beaches, from secluded coves to vibrant waterfronts. Whether you're seeking a tranquil escape or an adrenaline-pumping water sports adventure, Paphos has it all. Try your hand at windsurfing, scuba diving, or simply relax as gentle waves lap at your feet. It is also home to Cyprus' national park, the Akamas.

- Harbour Casle
- Petra tou Romiou
- Archaeological Park
- Mosaics
- Tombs of the Kings

- Coral Bay
- Akamas
- Kings Avenue Mall
- Traditional Villages





PAPHOS

UNESCO WORLD HERITAGE SITE

Step back in time as you explore Paphos, a UNESCO World Heritage Site steeped in history. Wander through the mythical birthplace of Aphrodite, the ancient goddess of love, and marvel at the remarkable Paphos Archaeological Park, home to intricate mosaics and ancient ruins. Uncover hidden gems like the Tombs of the Kings, where ancient royalty was laid to rest, or venture to the Paphos Castle, guarding the picturesque harbor since medieval times.

PAPHOS

HIGHER EDUCATION

Paphos offers a range of opportunities for higher education. With its welcoming atmosphere, excellent academic institutions, and picturesque surroundings, Paphos has become a popular destination for students seeking quality education. The city is home to renowned universities and colleges, such as the prestigious American University of Beirut - Mediterraneo and TEPAK University for Tourism. With dedicated state-of-the-art facilities and a vibrant student community, Paphos is an ideal location for those seeking a well-rounded and fulfilling higher education experience.





THE
INTERNATIONAL SCHOOL
OF PAPHOS PRIVATE

The International School has been registered with the Cyprus Ministry of Education and Culture since 1987. It has strong links with the British Council and is registered as a centre with two of the most esteemed and well-known Examination Boards in England: Edexcel and CIE (Cambridge International Examinations).

The school follows the English National Curriculum, but has a more flexible approach as it is mindful of the local educational needs and culture. The school moved to new premises in 2006, which offer excellent classroom, leisure and recreation facilities. The school caters to children from Kindergarten to sixth form, preparing them for university.

www.paphosinternationalschool.com





**PRIVATE
BRITISH SCHOOL**



Aspire offers the UK National Curriculum, leading to GCSE, IGCSE, and A-level qualifications, delivered by qualified and experienced teachers who recognize the importance of an inspirational learning environment. The ethos of ASPIRE Private British School is promoted in various ways, including excellent teaching standards, positive reinforcement, student awards, a competitive house system, displaying exceptional work, and celebrating achievement. Children must be fluent in English before joining the classroom. Those who are not fluent will spend time in our booster English class and will slowly be integrated back into their school year as their fluency improves. The children work towards GCSE and A-level qualifications, which can take them on to any UK, American, or worldwide university.

www.aspirecoe.com



THE PLAZA

The contents and information contained in this brochure are intended for general marketing purposes only and must not be construed as advice or being complete and accurate nor be relied upon as such. The photographs of the surrounding views and location may have been digitally enhanced or altered and do not represent actual views or surrounding views. These photographs are indicative only. Fittings and finishes are subject to availability and company's discretion. Prospective purchasers should make and must rely on their own enquiries. This brochure is a guide only and does not constitute an offer or contract. Neither the company nor any of its directors or employees give any representation or warranty as to the reliability of the information contained herein, and shall not be responsible and disclaim all loss, liability or expense of any nature whatsoever which may be attributable (directly, indirectly or consequentially) to the use of the information provided.