



OLEA
RESIDENCES

Pafilia



PAFOS

THE CITY OF BEAUTY

Pafos, a coastal city in the south west of Cyprus is the legendary birthplace of Aphrodite, the Goddess of love and beauty. Once the ancient capital of Cyprus, Pafos is Cyprus' most picturesque city and has been selected as the European Capital of Culture for 2017.



The City of Beauty



Pafos, with its charming harbour and medieval fort, offers cosmopolitan living, beautiful scenery and significant historical sites. It was the capital of Cyprus for 600 years in ancient times and its archaeological legacy is such that UNESCO put the whole town on its World Cultural Heritage list.



UNESCO World Heritage Site

The town of Pafos is of outstanding universal value and it is included in the official UNESCO list of cultural and natural treasures of the world heritage. These historical sites date back thousands of years and include ancient theatres and colorful mosaics, to impressive fortresses and underground tombs.



Pafos

Pafos' historic city charm is complemented by a vast array of stunning beaches, perhaps the best on the island, an excellent selection of stylish cafes and restaurants, modern amenities, a buzzing nightlife and many interesting attractions. It is also home to Cyprus' national park, the Akamas.

- Harbour Castle
- Petra tou Romiou
- Archaeological Park
- Mosaics
- Tombs of the Kings
- Coral Bay
- Akamas
- Kings Avenue Mall
- Traditional Villages

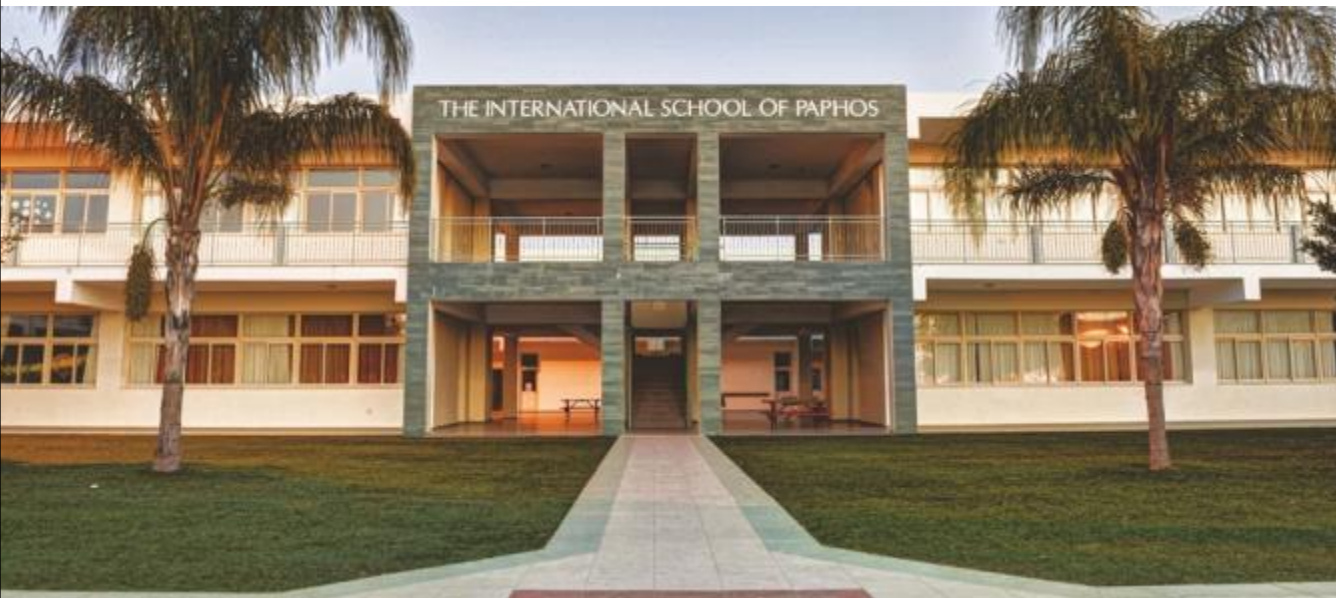


Traditional & Contemporary Dining



Pafos is well known for its seafood and local produce, and as such its local restaurants are known for the quality and freshness of their cuisine. Pafos offers a wide selection of traditional taverns, family-friendly restaurants, stylish cafés and some of the best seafood restaurants on the island.

Private Schools









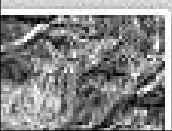
The private schools offer a well-balanced education based on the English National Curriculum

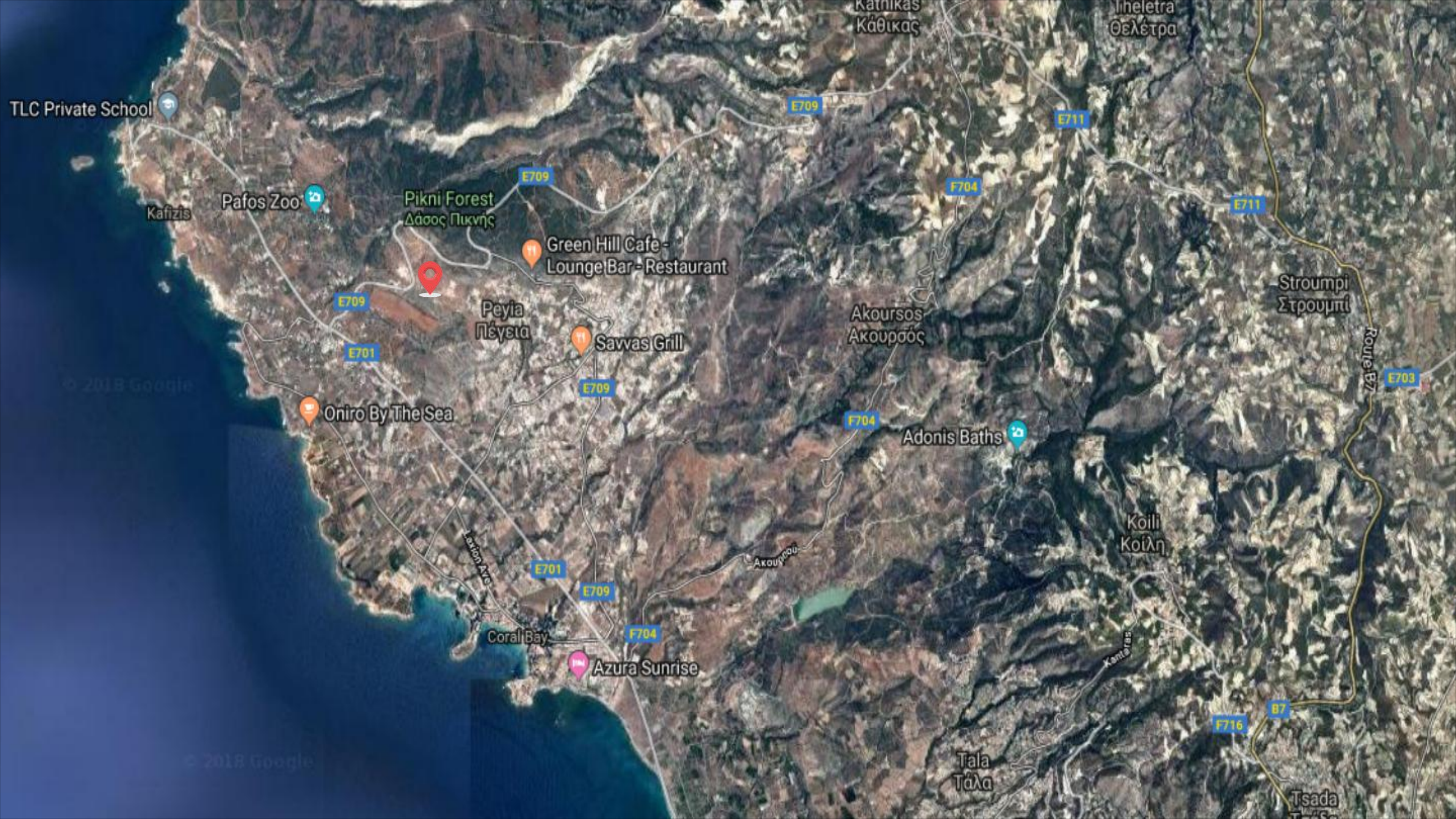


PLACES OF INTEREST

- 1. Sea Caves
- 2. Pafos Zoo
- 3. Avakas Gorge
- 4. Ayios Georgios Museum
- 5. Nature paths

-  Private Schools
-  Medical Centres
-  Minthis Golf Resort
-  Pafos centre 16 km
-  Paphos Airport 33.6 km
-  Larnaca Airport 147 km





TLC Private School

Kafizis

Pafos Zoo

Pikni Forest
Δάσος Πικνής

Green Hill Cafe -
Lounge Bar - Restaurant

Peyia
Πέγεια

Savvas Grill

Oniro By The Sea

Adonis Baths

Coral Bay

Azura Sunrise

Akoursos
Ακουρός

Koili
Κοίλη

Tala
Τάλα

Stroumpi
Στρουμπί

Tsada
Τσάδα

Kathikas
Κάθικας

Itheletra
Θελέτρα

E709

E711

E709

F704

E711

E709

E701

E709

F704

E703

E701

E709

F704

F716

B7

© 2018 Google

© 2018 Google

Amenities

AMENITIES NEAR OLEA RESIDENCES



Bakery
2.8 km



Supermarket
5 km



Private English
School 4.4 km



Medical Centre
2.8 km



Pharmacy
2.8 km



Petrol Station
4.3 km



Sporting
Centre 3.7 km



Restaurants
1.5 km



CAFES & BARS

Just 3.3 km away from a wide selection of chic cafes and beach bars.



KINGS AVENUE MALL

Only 17 km away of an impressive full concept shopping mall, with entertainment venues, cafes and restaurants.

SANDY BEACHES

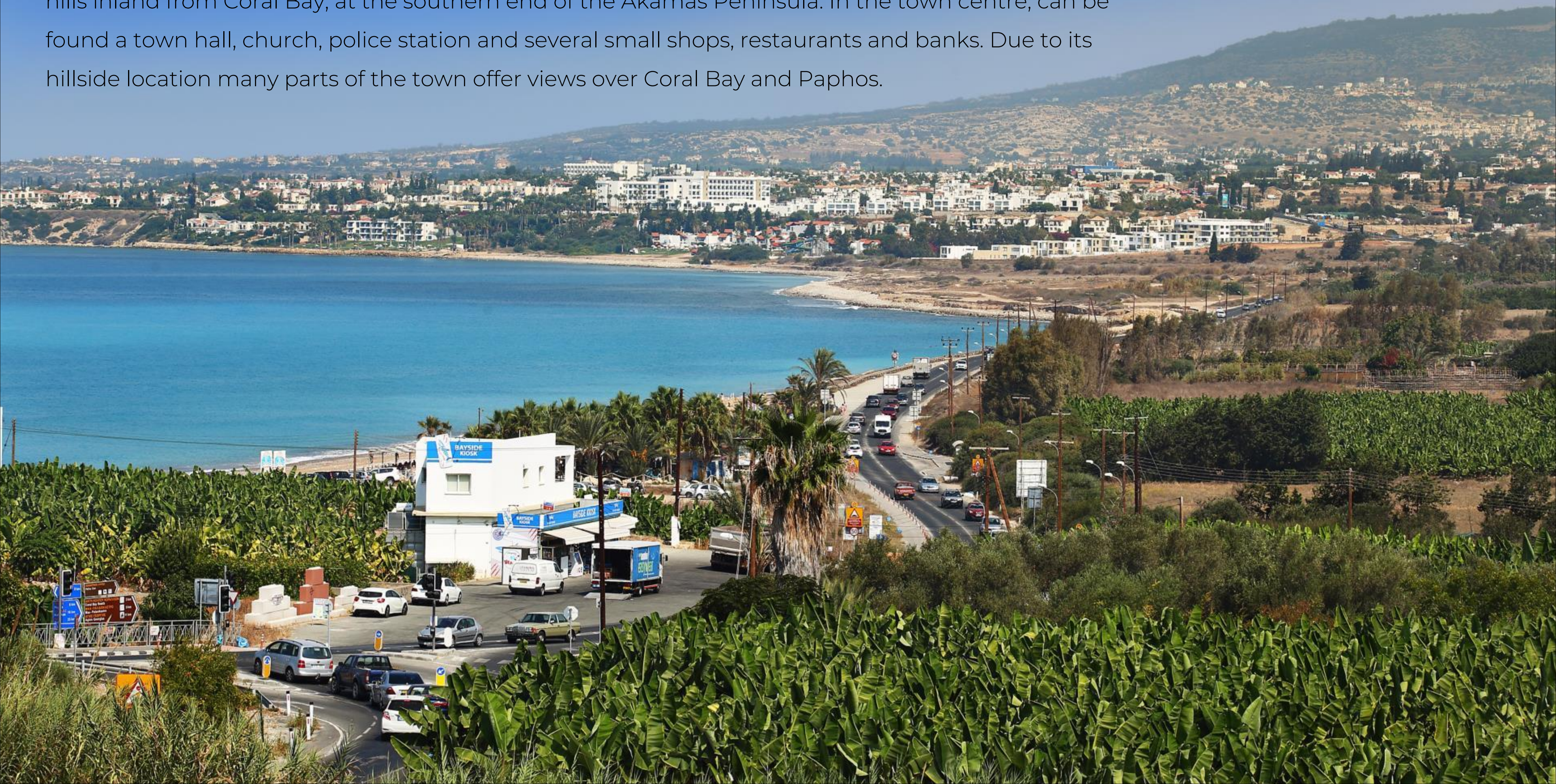
A selection of sandy beaches are within 4 km away.



Views from the site



Peyia is a town in the Paphos District of Cyprus, situated mainly on the steep slopes of the coastal hills inland from Coral Bay, at the southern end of the Akamas Peninsula. In the town centre, can be found a town hall, church, police station and several small shops, restaurants and banks. Due to its hillside location many parts of the town offer views over Coral Bay and Paphos.





ΔΗΜΑΡΧΕΙΟ ΠΕΓΕΙΑΣ ΡΕΥΙΑ MUNICIPALITY

ΚΟΙΝΟΤΑΡΧΗΣ ΠΕΓΕΙΑΣ
PEYIA COMMUNITY COUNCIL

ΠΕΓΕΙΑ
ΔΗΜΟΤΙΚΟ ΑΝΟΙΚΤΟ
PUBLIC TOILETS









OLEA

RESIDENCES



VILLA 1

Olea Residences is rested on a hilltop in one of the most picturesque locations in Pafos. This luxurious development commands exceptional views of the Mediterranean Sea and surrounding countryside. The location borders the Akamas National Park and the Pikni Pine forest, placing a wealth of beautiful scenery on the doorstep. Each villa is airy and open in design, connecting the inside and outside through floor-to-ceiling windows. Villas have been carefully oriented to maximise views, and all feature a private infinity pool.



VILLA 8A

The design blends modern architecture with traditional Cypriot style and character, incorporating local stone, terracotta roof tiles and glass. These traditional materials have been combined with an ultra-modern edge, resulting in enduring designs that fully exploit their spectacular setting.



VILLA 8E

SITE PLAN



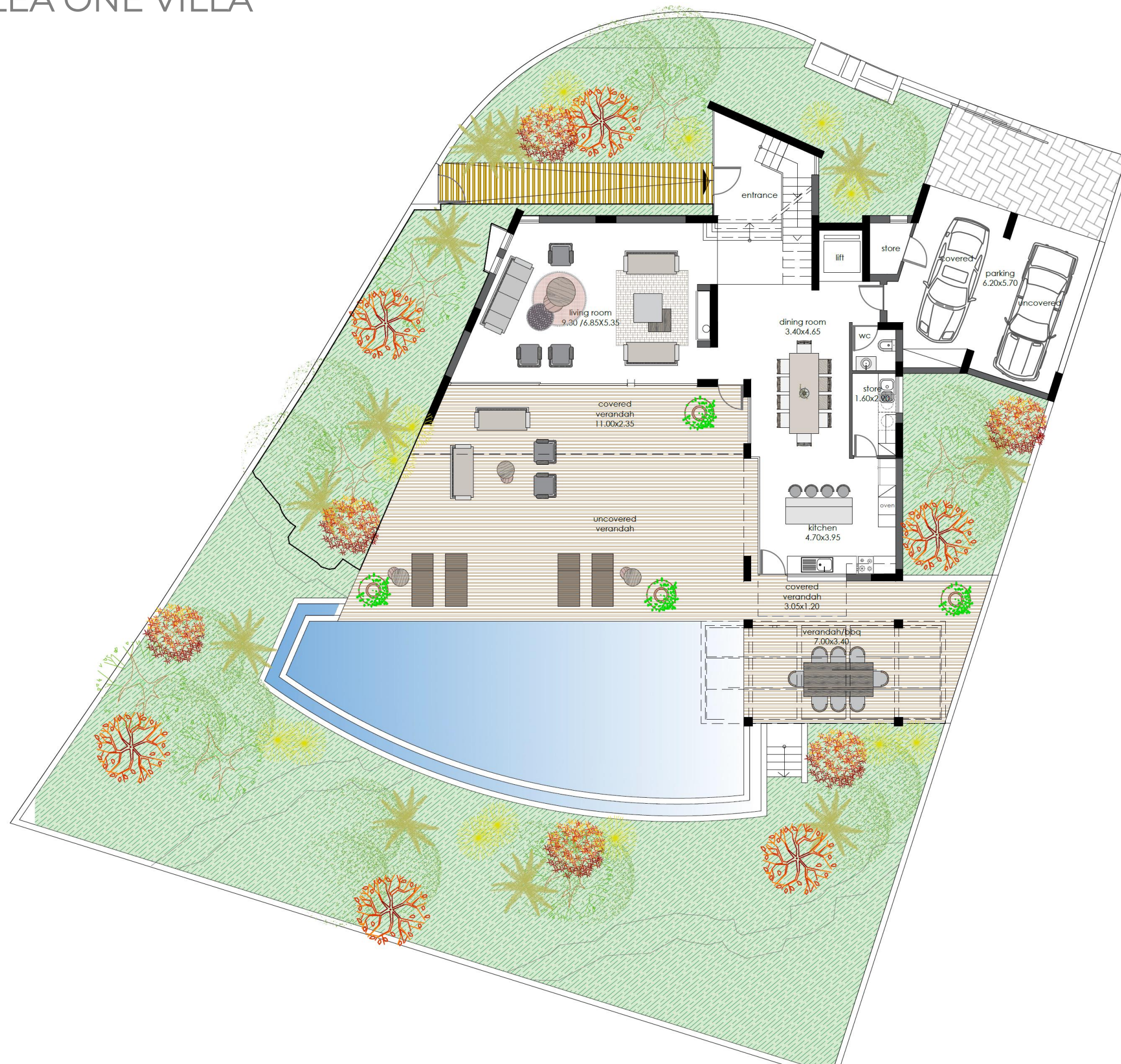
OLEA

ONE

OLEA ONE, a luxurious four-bedroom supervilla on a privileged frontline plot offers incredible and panoramic views of the Mediterranean coastline.



SITE PLAN OLEA ONE VILLA



Bedrooms | 4
Bath | 5 (5 en suite)
Covered Area m² | 256.00
Covered Veranda m² | 41.00
Total Covered Area m² | 297.00
Uncovered Veranda m² | 112.00
Plot: 827.00 m²
Pool: Yes
Garden: Yes



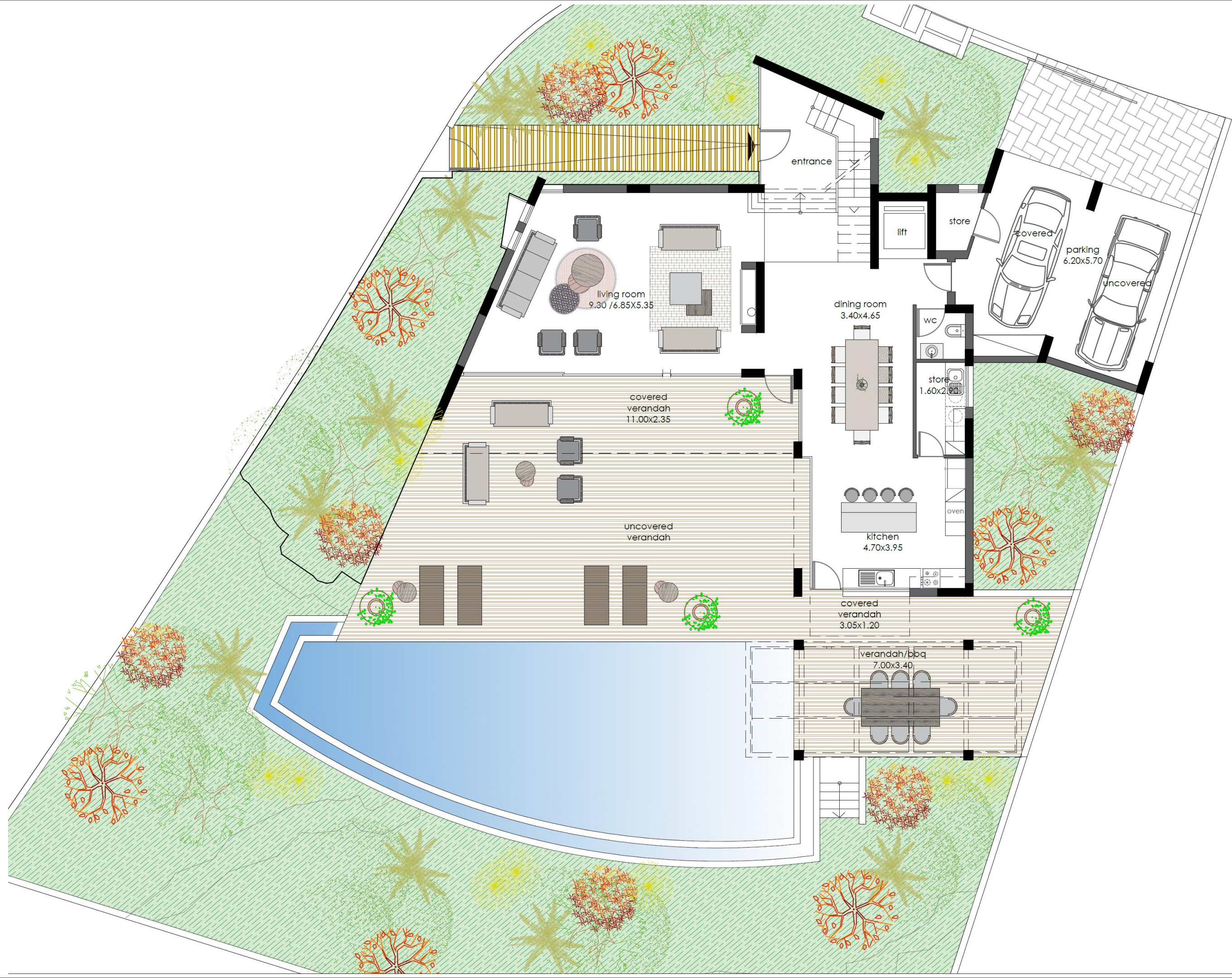
OLEA ONE



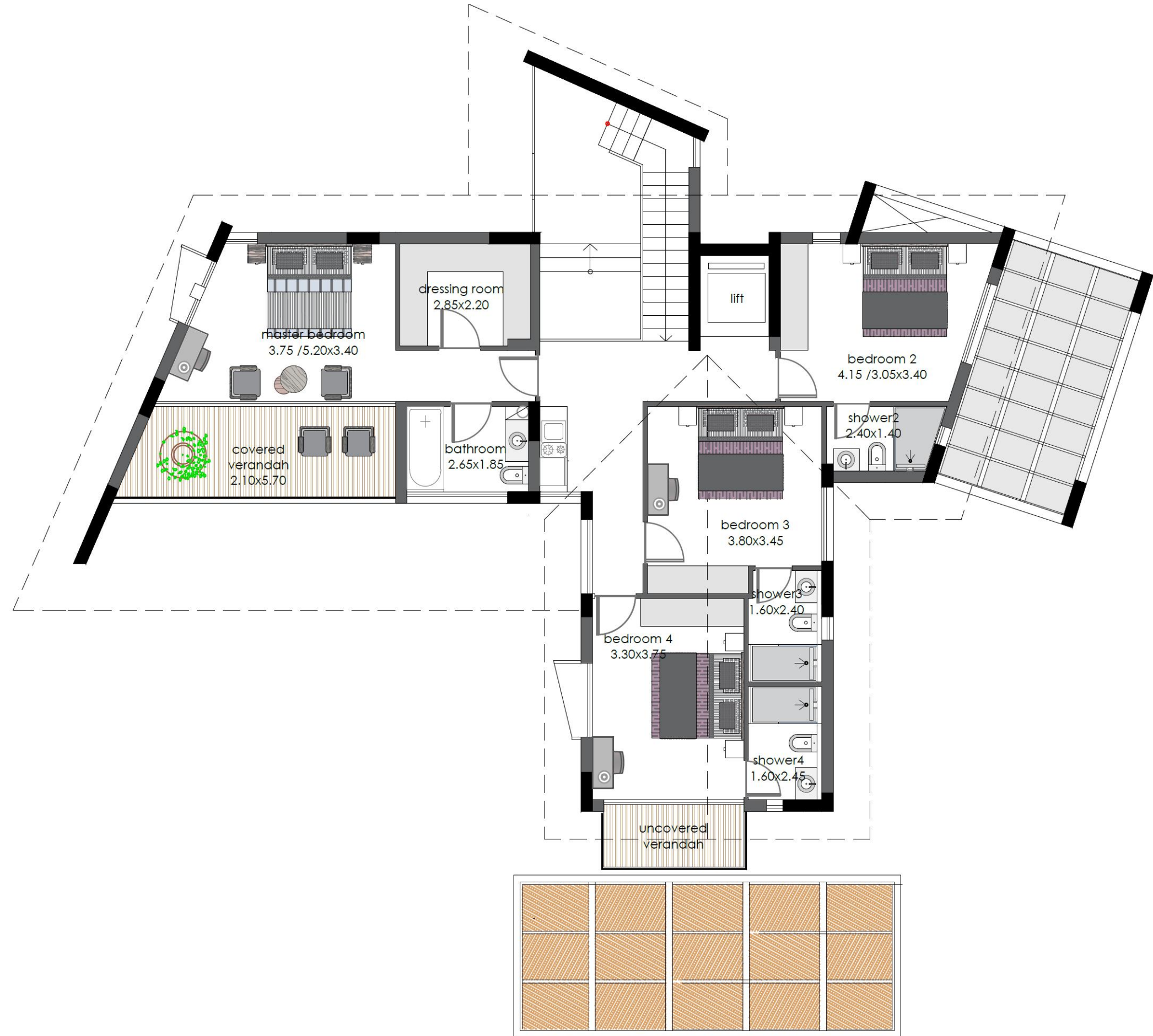
OLEA ONE



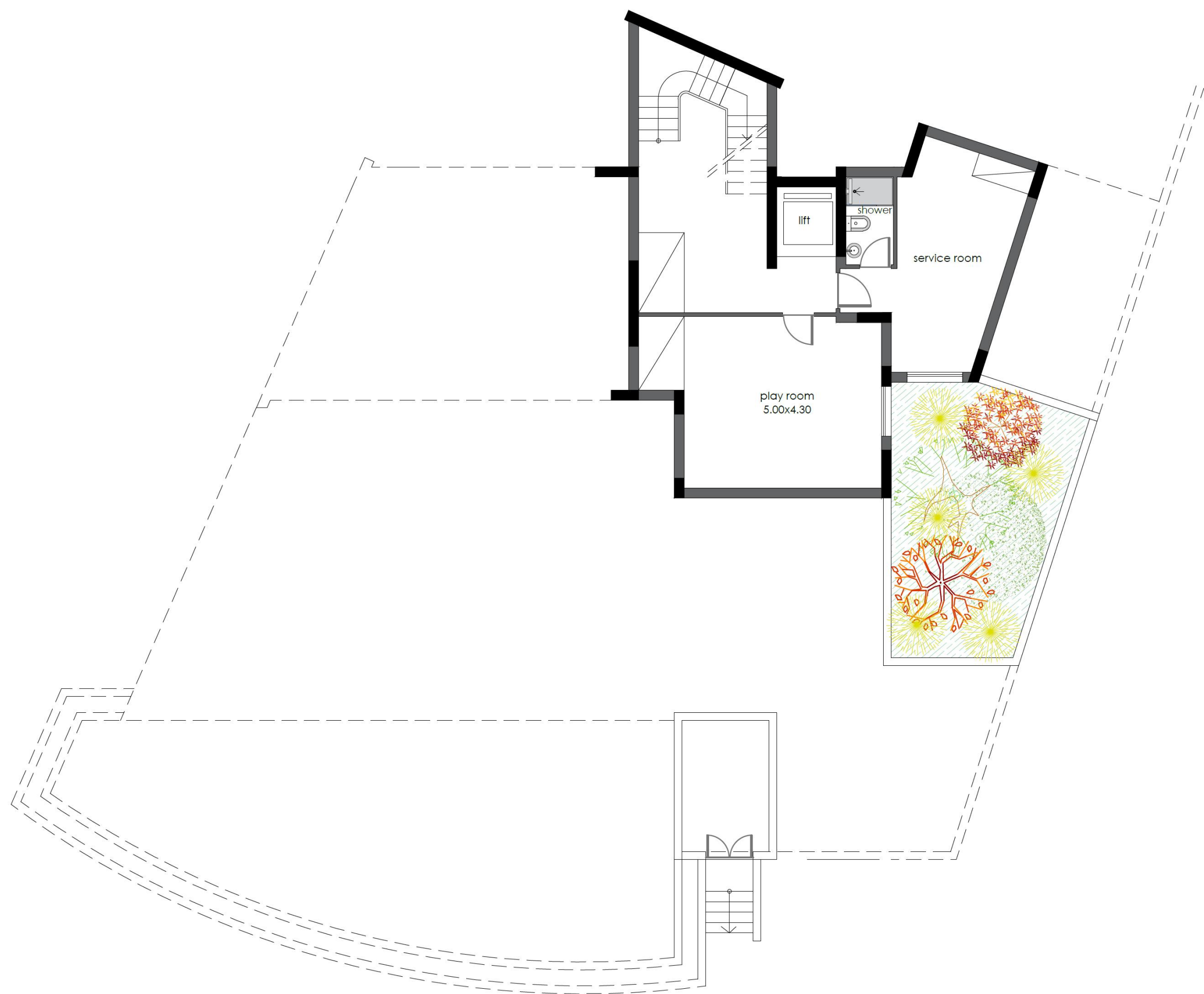
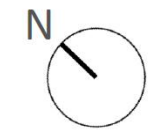
OLEA ONE



GROUND FLOOR



FIRST FLOOR



BASEMENT

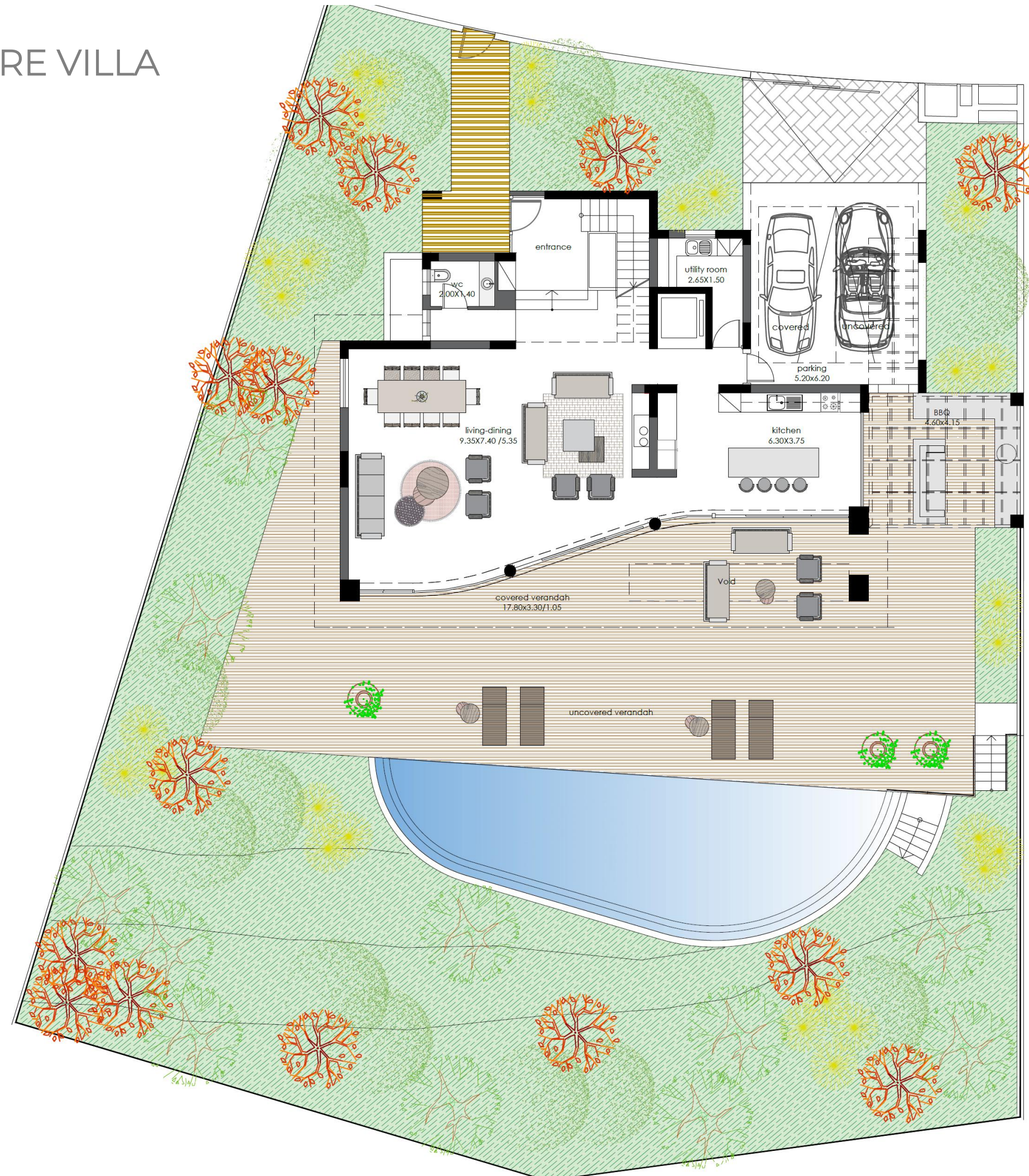
OLEA MARE

OLEA MARE, a luxurious 4-bedroom supervilla, boasts excellent specifications and offers spectacular sea views.



OLEA MARE

SITE PLAN OLEA MARE VILLA



- Bed | 4
- Bath | 5 (5 en suite)
- Covered Area m² | 277.00
- Covered Veranda m² | 42.00
- Total Covered Area m² | 319.00
- Uncovered Veranda m² | 190.00
- Plot: 897.00 m²
- Pool: Yes
- Garden: Yes



OLEA MARE



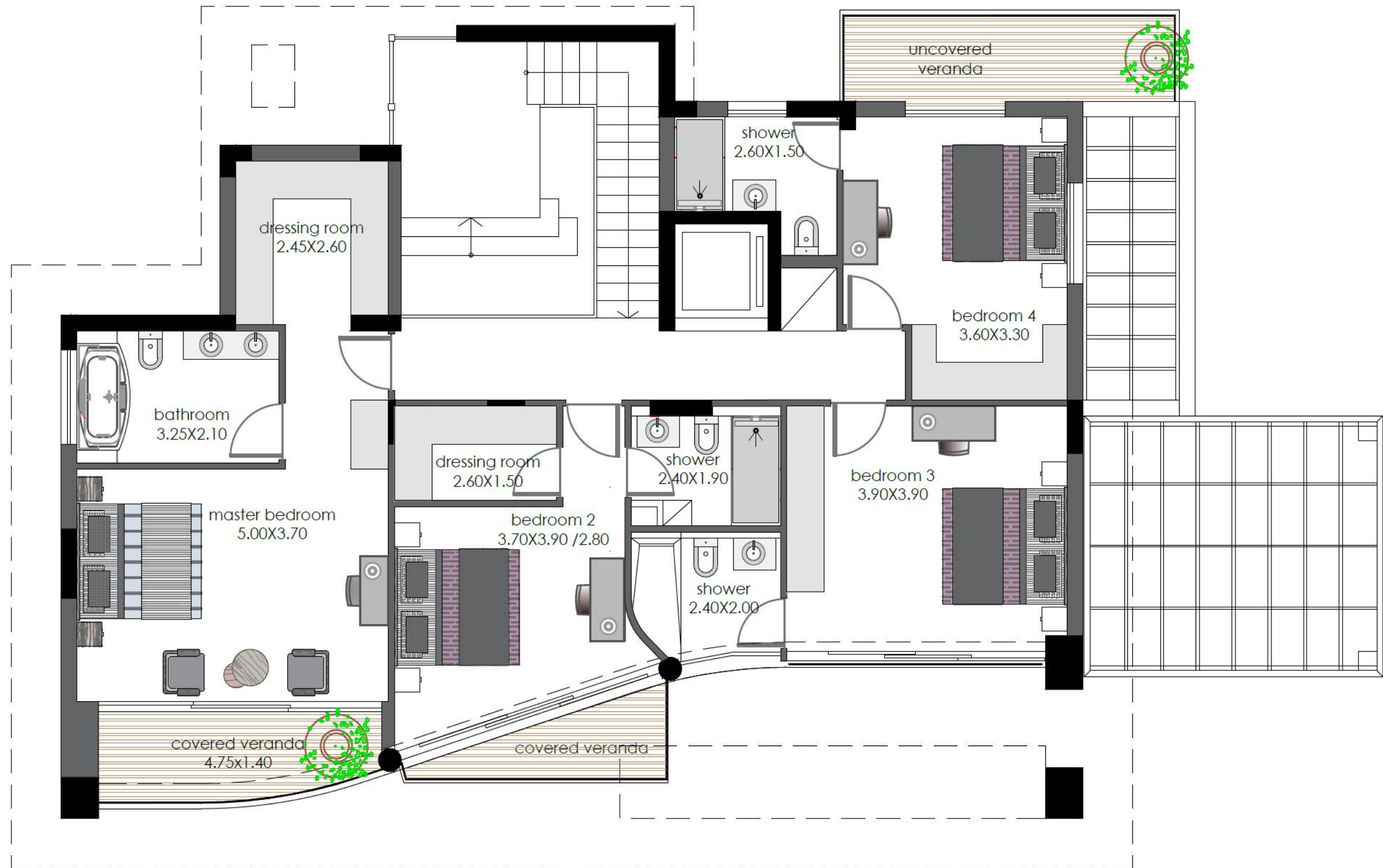
OLEA MARE



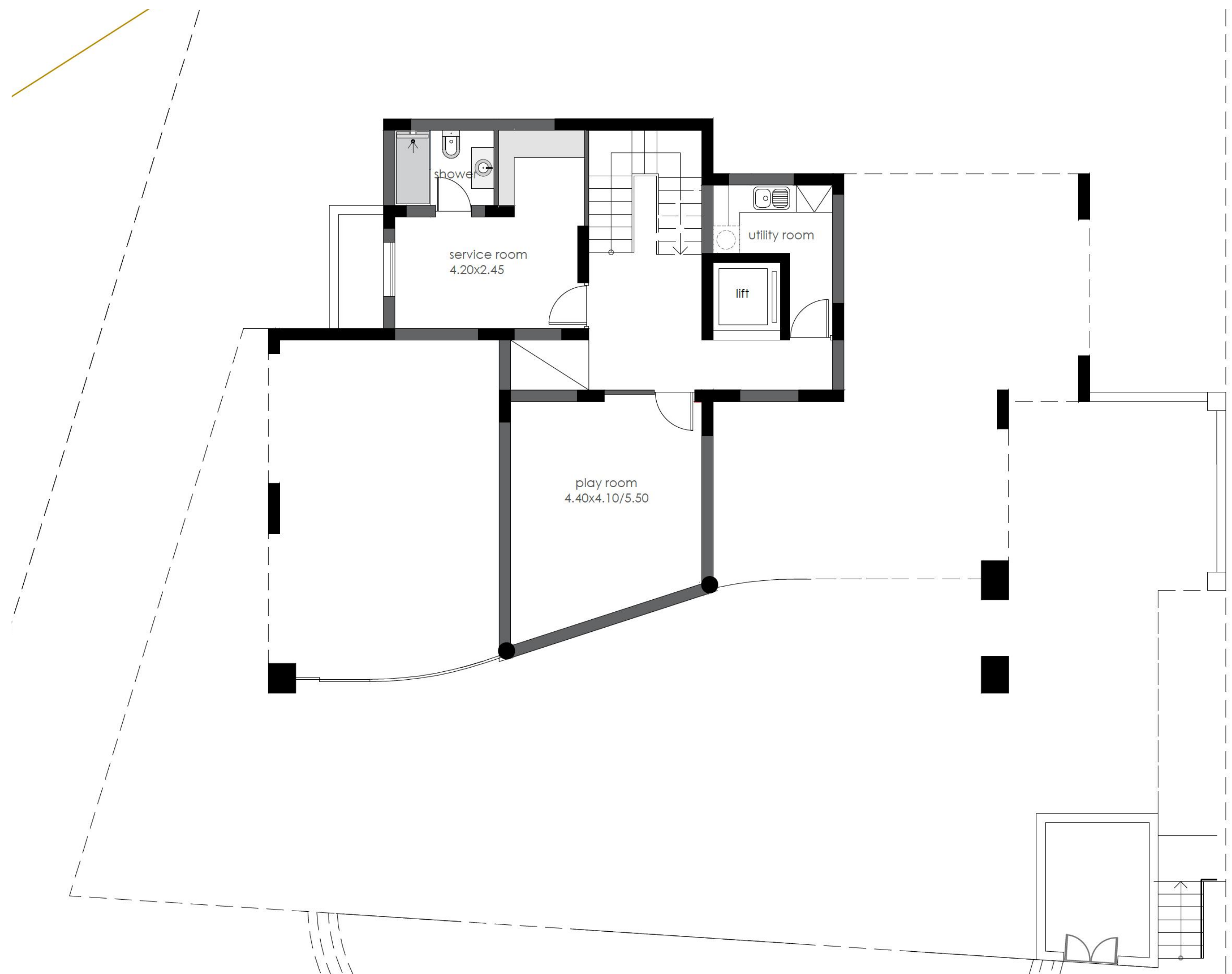
OLEA MARE

GROUND FLOOR





FIRST FLOOR



BASEMENT

SITE PLAN – NEIGHBORHOOD VILLAS 8A – 8E



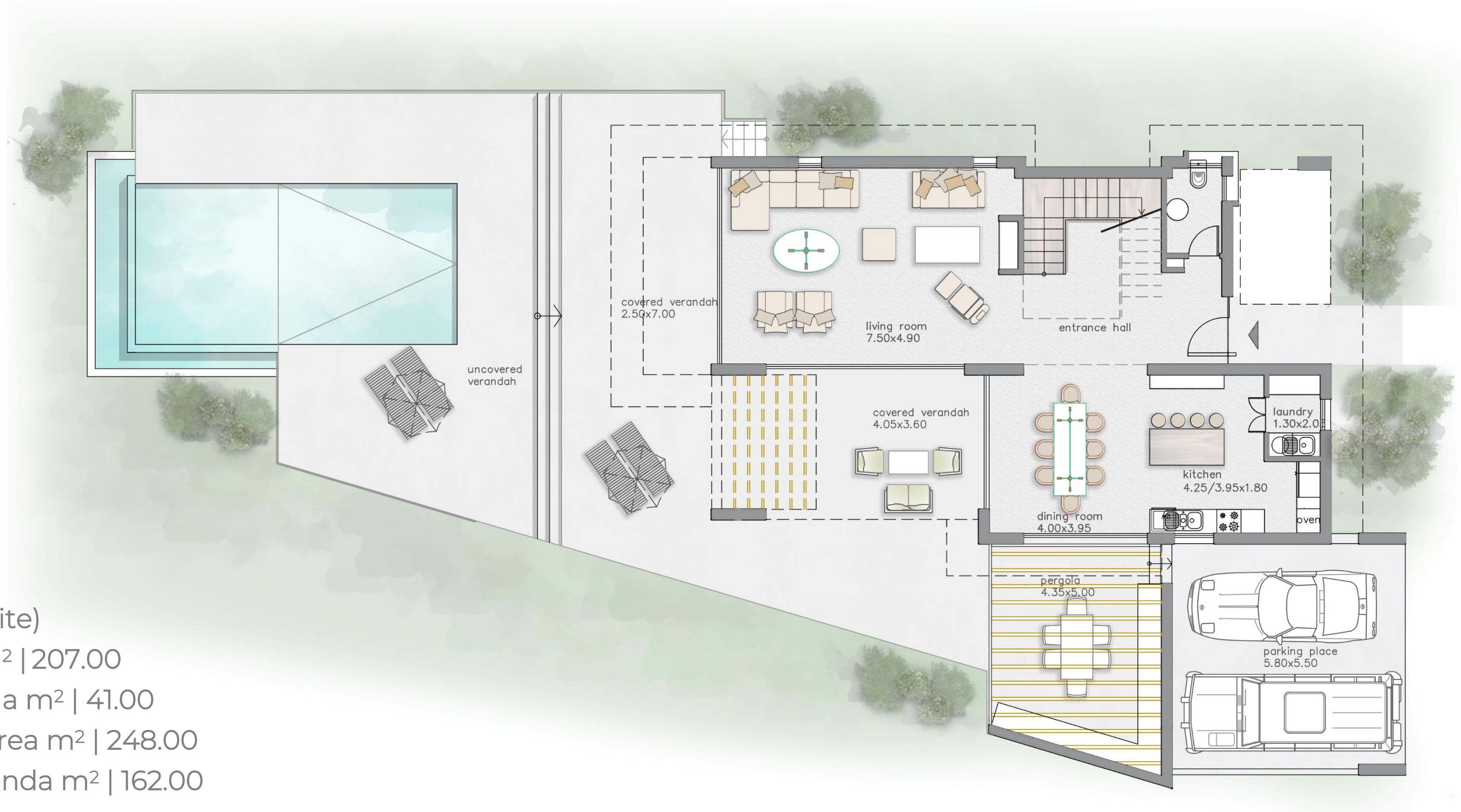
These 3-bedroom neighborhood villas of Olea Residences, offer private swimming pools, large spacious living areas and en-suite bathrooms. Quiet and peaceful, these residences enjoy a lot of openness, functional living areas, and ensure comfort and privacy.





VILLA 8A & 8B

VILLA 8A



Bed | 3
Bath | 3 (3 en suite)
Covered Area m² | 207.00
Covered Veranda m² | 41.00
Total Covered Area m² | 248.00
Uncovered Veranda m² | 162.00
Plot: 680.00 m²
Pool: Yes
Garden: Yes

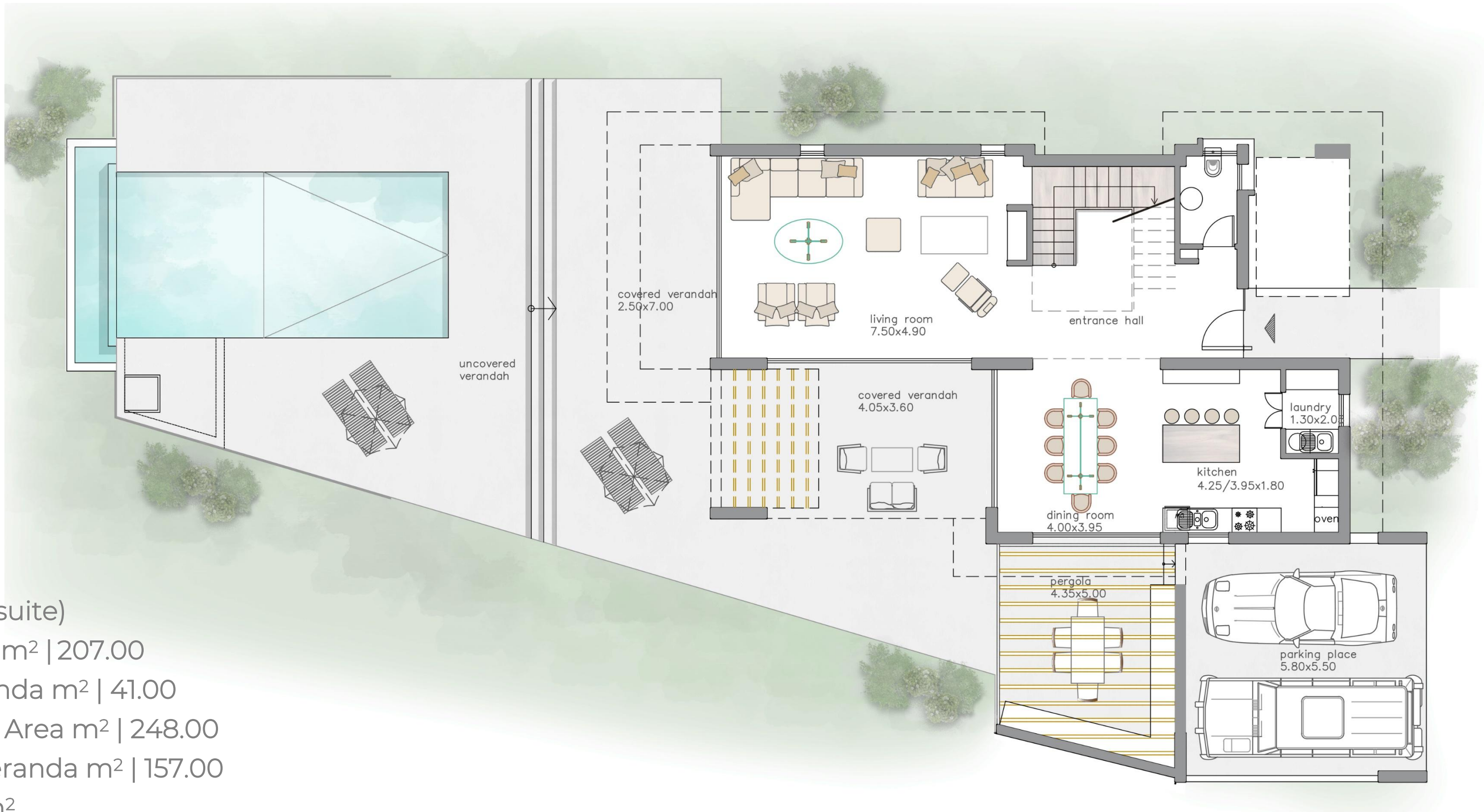
GROUND FLOOR

VILLA 8A



FIRST FLOOR

VILLA 8B



- Bed | 3
- Bath | 3 (3 en suite)
- Covered Area m² | 207.00
- Covered Veranda m² | 41.00
- Total Covered Area m² | 248.00
- Uncovered Veranda m² | 157.00
- Plot: 630.00 m²
- Pool: Yes
- Garden: Yes

GROUND FLOOR

VILLA 8B



FIRST FLOOR



VILLA 8A & 8B





VILLA 8A & 8B

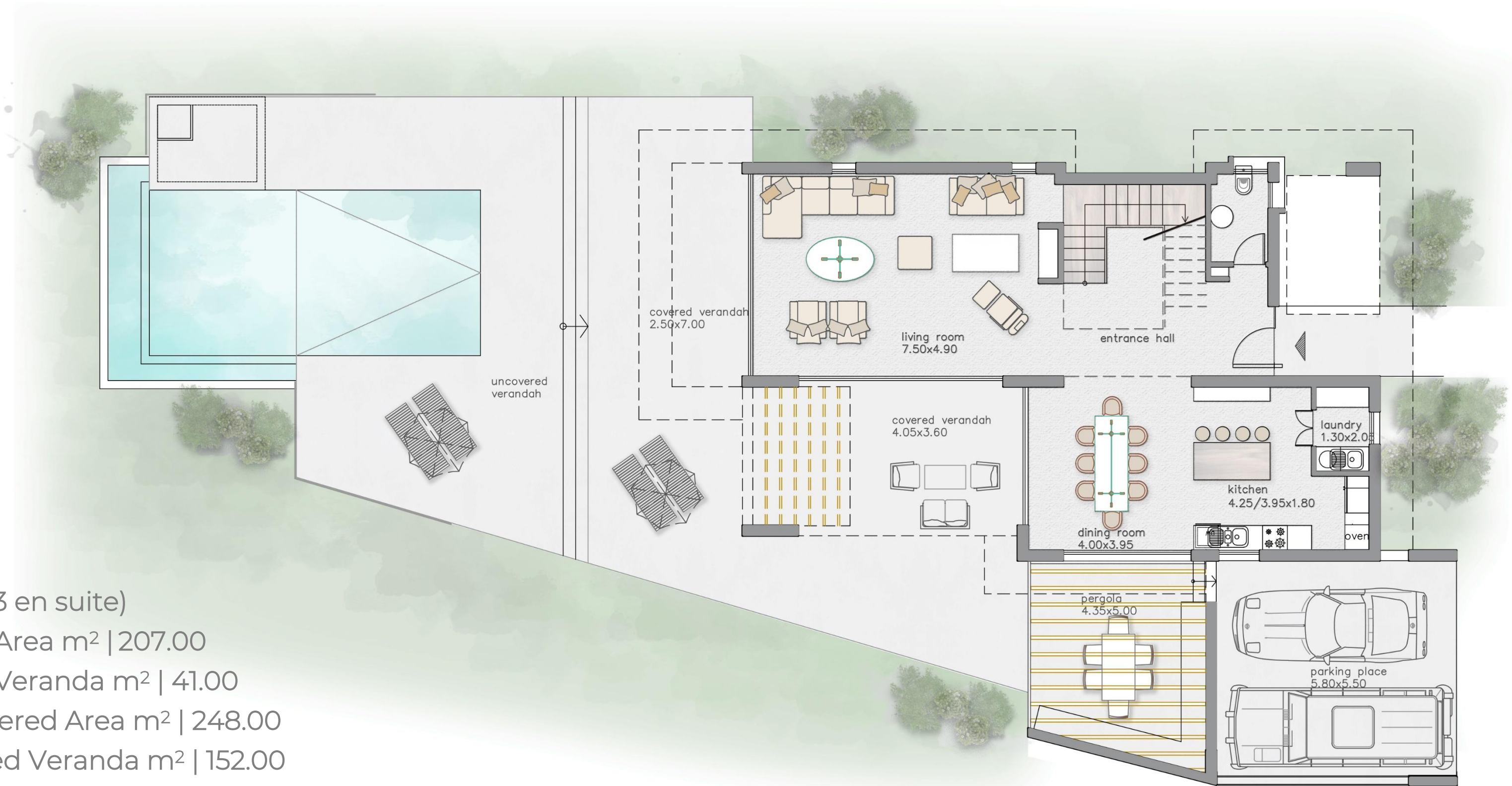


VILLA 8A & 8B



VILLA 8C

VILLA 8C



Bed | 3
Bath | 3 (3 en suite)
Covered Area m² | 207.00
Covered Veranda m² | 41.00
Total Covered Area m² | 248.00
Uncovered Veranda m² | 152.00
Plot: 630.00 m²
Pool: Yes
Garden: No

GROUND FLOOR

VILLA 8C



FIRST FLOOR



VILLA 8D

VILLA 8D



Bed | 3

Bath | 3 (3 en suite)

Covered Area m² | 214.00

Covered Veranda m² | 40.00

Total Covered Area m² | 254.00

Uncovered Veranda m² | 113.00

Plot: 580.00 m²

Pool: Yes

Garden: Yes

GROUND FLOOR

VILLA 8D



FIRST FLOOR



VILLA 8D



VILLA 8D

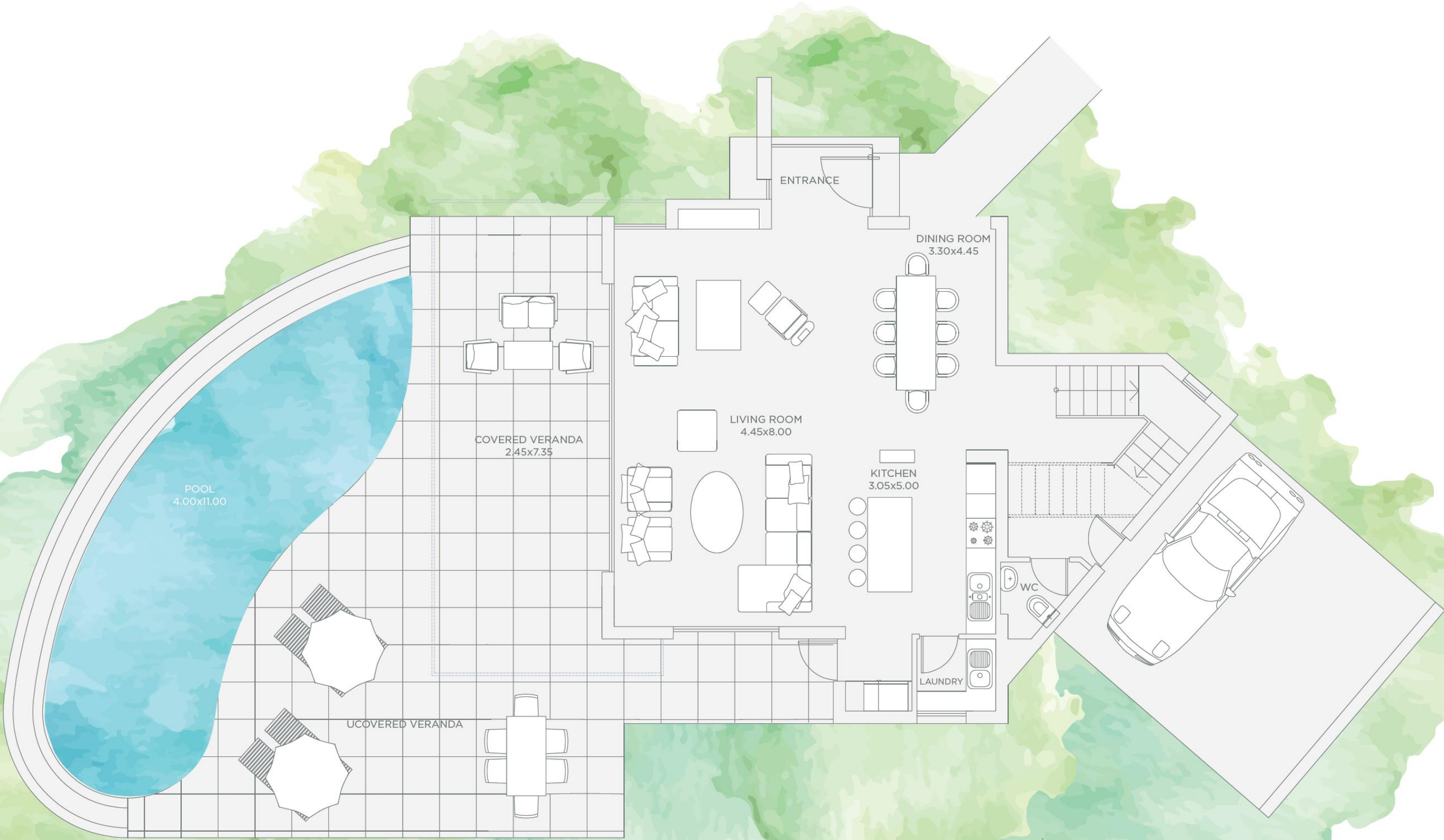


VILLA 8D



VILLA 8D

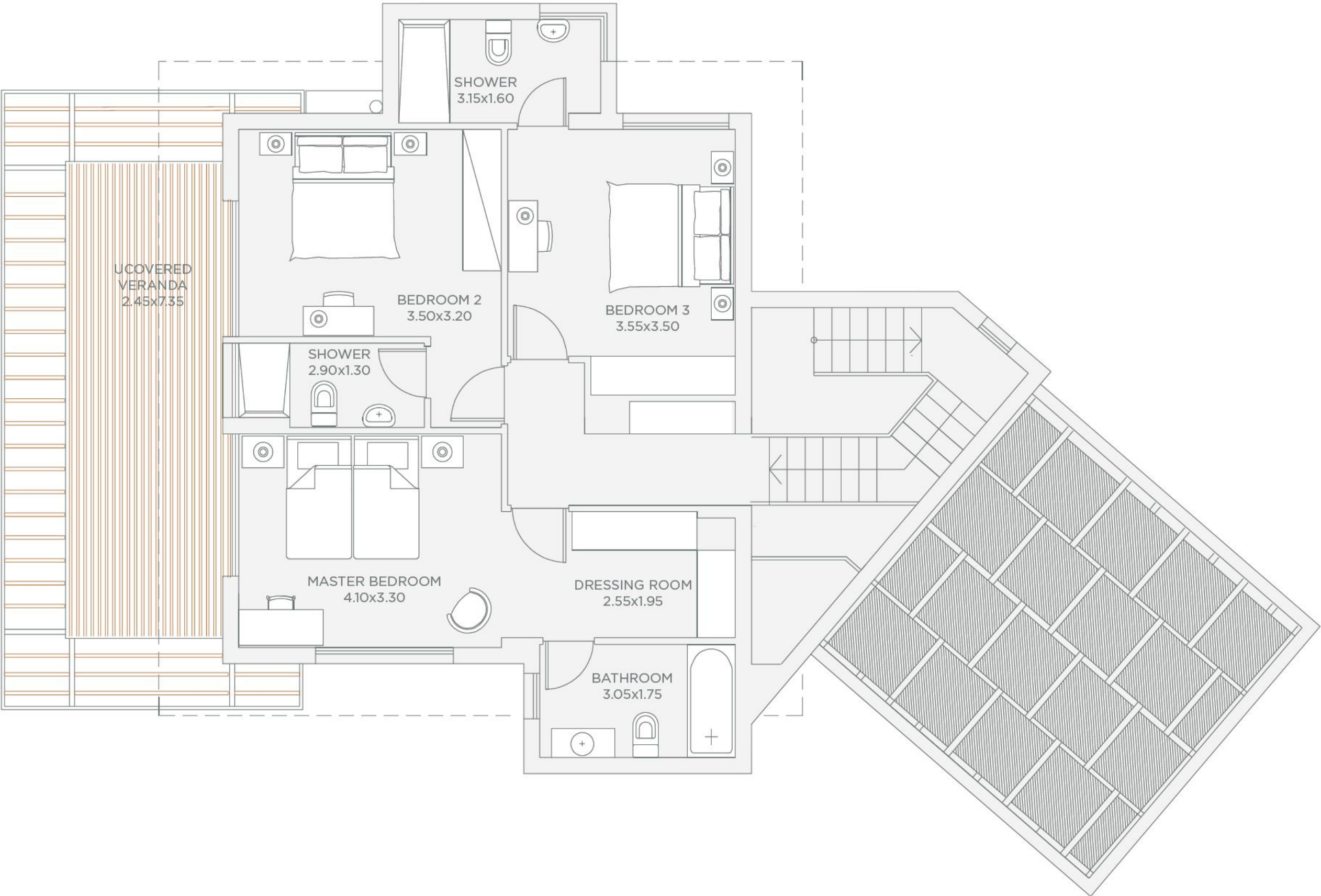
VILLA 8E



- Bed | 3
- Bath | 3 (3 en suite)
- Covered Area m² | 191.00
- Covered Veranda m² | 18.00
- Total Covered Area m² | 209.00
- Uncovered Veranda m² | 84.00
- Plot: 430.00 m²
- Pool: Yes
- Garden: Yes

GROUND FLOOR

VILLA 8E



FIRST FLOOR



OLEA

RESIDENCES

Pafilia