

KONIA GREEN



Pafilia
PROPERTY DEVELOPERS





34 DETACHED VILLAS AND 26 TOWNHOUSES
SITUATED AROUND A CENTRAL GREEN PARK



LOCATION - KONIA



Konia Green comprises 34 detached villas and 26 townhouses situated around a central green park. The contemporary development is set in a prestigious hillside suburb of Paphos, Konia, which is well known for its magnificent sunsets.

The village is favoured by locals and has a vibrant ex-pat community thanks to its convenient location and traditional amenities.

The area is located just 3 km or 5 minutes away by car to the town centre of Paphos and the largest International School in the region, making this the perfect family location.





RICH HISTORY AND VIBRANT COMMUNITY



Konia has an interesting and rich history, this combined with its modern facilities make it an ideal place to call home. Central to the village is a large Church, some traditional tavernas or restaurants that serve Cypriot cuisine made with fresh and local farmed products. There is a pharmacy and some convenience stores.

Annually, there is a summer festival where the public school of Konia perform in the square with joyful traditional Cypriot music and games. Within Konia there is also a number of community parks, which are useful for families with children as there is a basketball and multi-functional court, climbing frames, swings and slides, as well as a safe and commonplace for teenagers to meet up.





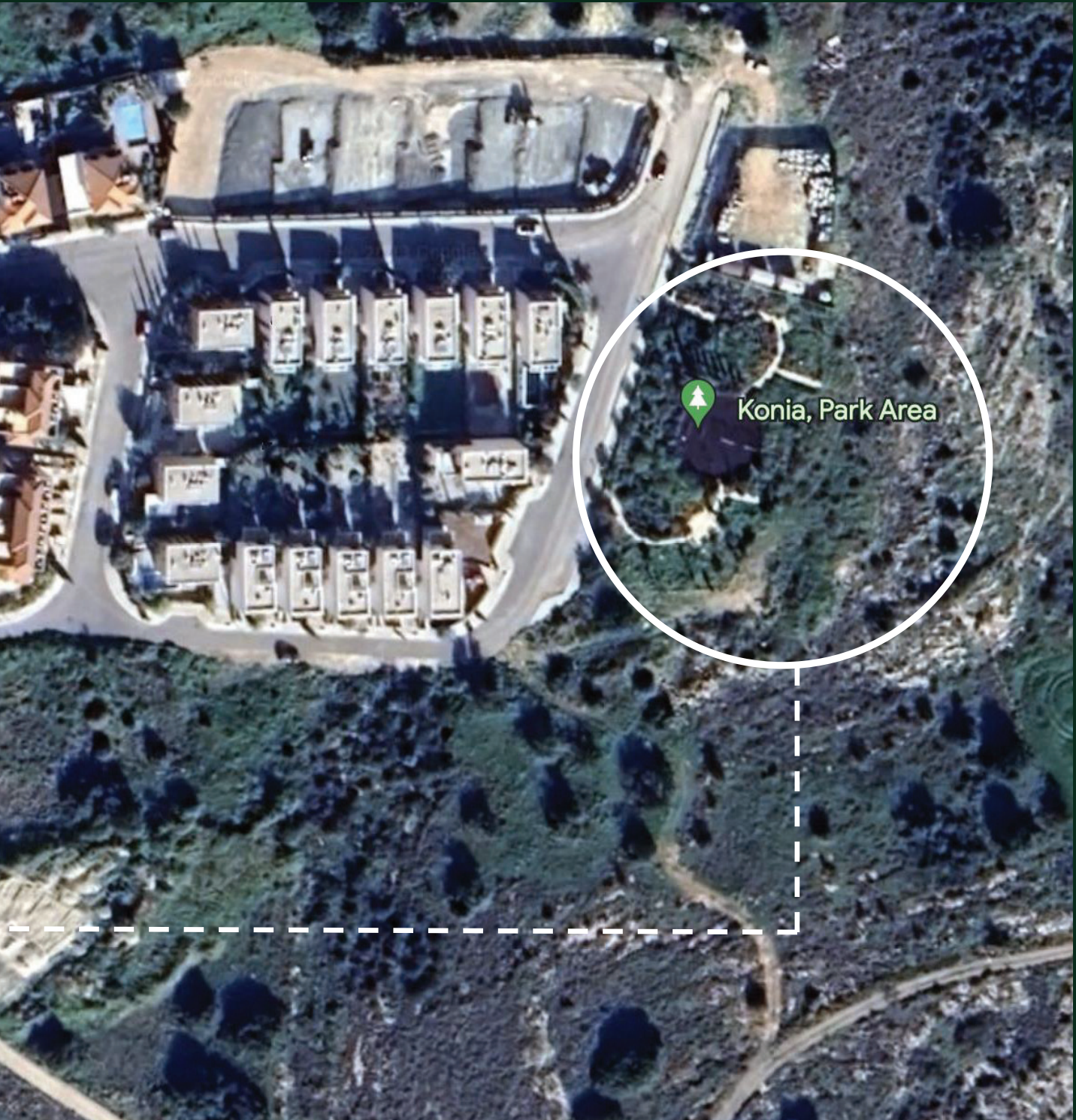
A SENSE OF FAMILY



Within Konia there are a number of well maintained community parks and children's playgrounds which include basketball and multi functional court, climbing frames, swings and slides, as well as a safe and common place for family and friends to meet up.







2 CHILDRENS PARKS WITHIN A 5 MINUTE WALK



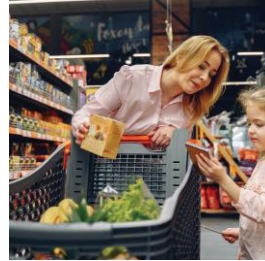




AMENITIES NEAR KONIA GREEN



Bakery
2 km



Supermarket
4 km



TLC Private English School
4.6 km



Private Hospital
4 km



Pharmacy
1 km



Petrol Station
4 km



Gym and Sport Centre
6 km



Cafe / Restaurants
350 m

Shipwreck MV
Dimitrios II

Melania Restaurant,
Paphos, Cyprus
ΜΕΛΑΝΙΑ
ΕΣΤΙΑΤΟΡΙΟ

MEL
VIL



Kings Avenue Mall



Agora /
Municipal Market



Lighthouse &
Ancient Amphitheater
(UNESCO World Heritage List)



Medieval Castle
(UNESCO World Heritage List)



City Hall



Paphos Harbour & Port



Archaeological Park
of Kato Pafos
(UNESCO World Heritage List)



Alykes Beach



Aphrodite Waterpark



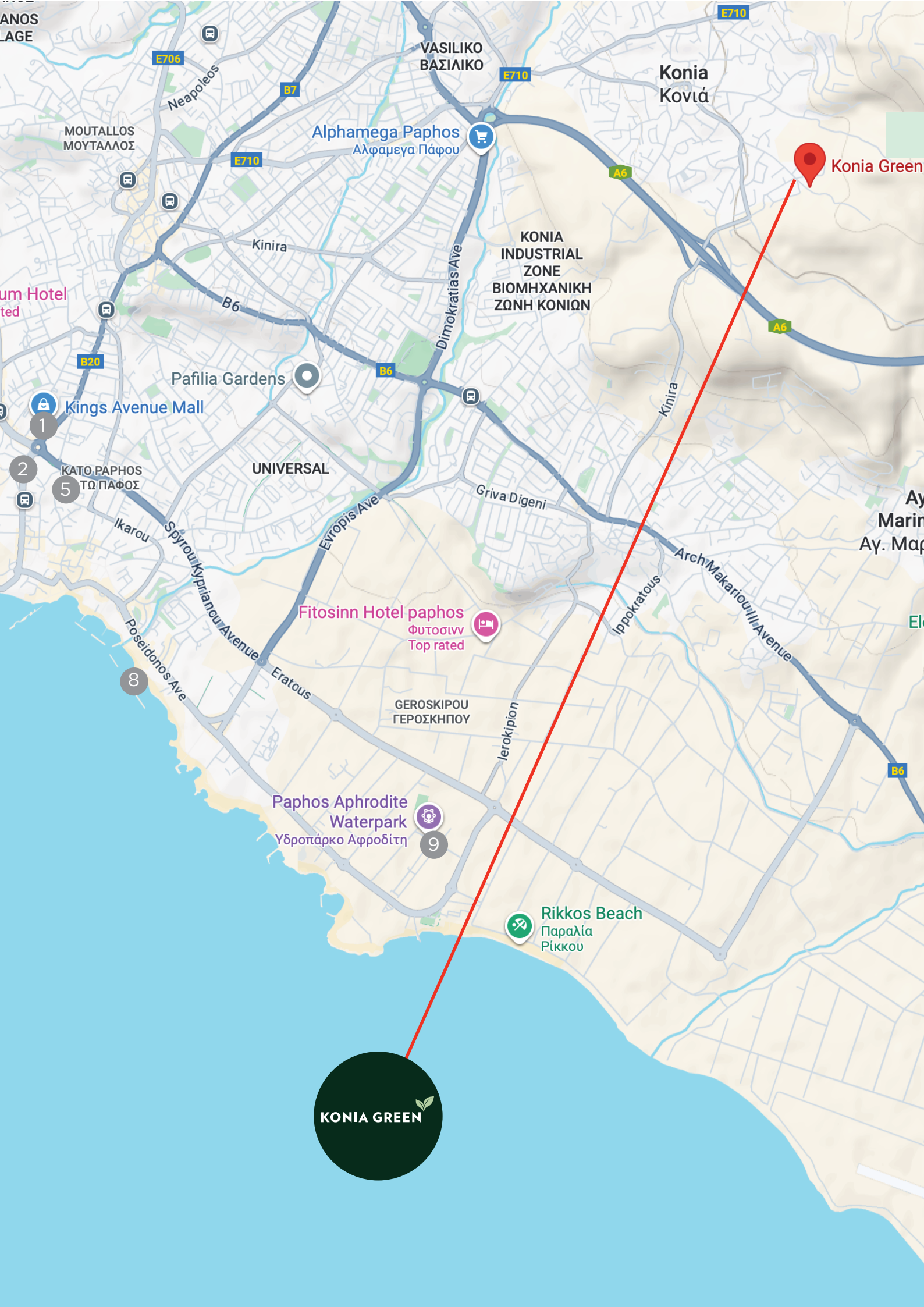
☰ ☰ ☰ ☰ Paphos New Coastal Path



A GREAT LOCATION

- Shopping **5 mins**
- Town Center **5 mins**
- Hotels **12 mins**
- Highway **3 mins**
- Beach **12 mins**
- Bank **6 mins**
- Port **15 mins**
- Pafos airport **12 mins**
- Larnaka airport **80 mins**
- Troodos **73 mins**
- Limassol **40 mins**
- Nicosia **95 mins**

Konia has very good direct links to the motorway, easily connecting it with Paphos as well as other major cities of Cyprus such as Limassol. There are frequent bus links within and on the outskirts of Konia and its an easy 5 minute drive to the town or beach.



Konia Green

Konia Koviá

Alphamega Paphos
Αλφαμεγα Πάφου

KONIA INDUSTRIAL ZONE
ΒΙΟΜΗΧΑΝΙΚΗ ΖΩΝΗ ΚΟΝΙΩΝ

ΜΟΥΤΑΛΛΟΣ
ΜΟΥΤΑΛΛΟΣ

um Hotel
ted

Pafilia Gardens

Kings Avenue Mall

ΚΑΤΟ ΠΑΡΗΟΣ
ΤΩ ΠΑΦΟΣ

UNIVERSAL

Fitosinn Hotel paphos
ΦΥΤΟΣΙΝΝ
Top rated

ΓΕΡΟΣΚΙΡΟΥ
ΓΕΡΟΣΚΗΠΟΥ

Paphos Aphrodite
Waterpark
Υδροπάρκο Αφροδίτη

Rikkos Beach
Παραλία
Ρίκκου

VASILIKO
ΒΑΣΙΛΙΚΟ

Neapoleos

Kinira

Dimokratias Ave

Kinira

Griva Digeni

Ippokratous

Arch Makariou III Avenue

Poseidonos Ave

Spyrou Kyriakou Avenue

Evropis Ave

Ierokipion

Eratous

1
2
5

8

9

B6

E706

B7

E710

E710

E710

A6

A6

B20

B6

B6

B6



KONIA GREEN

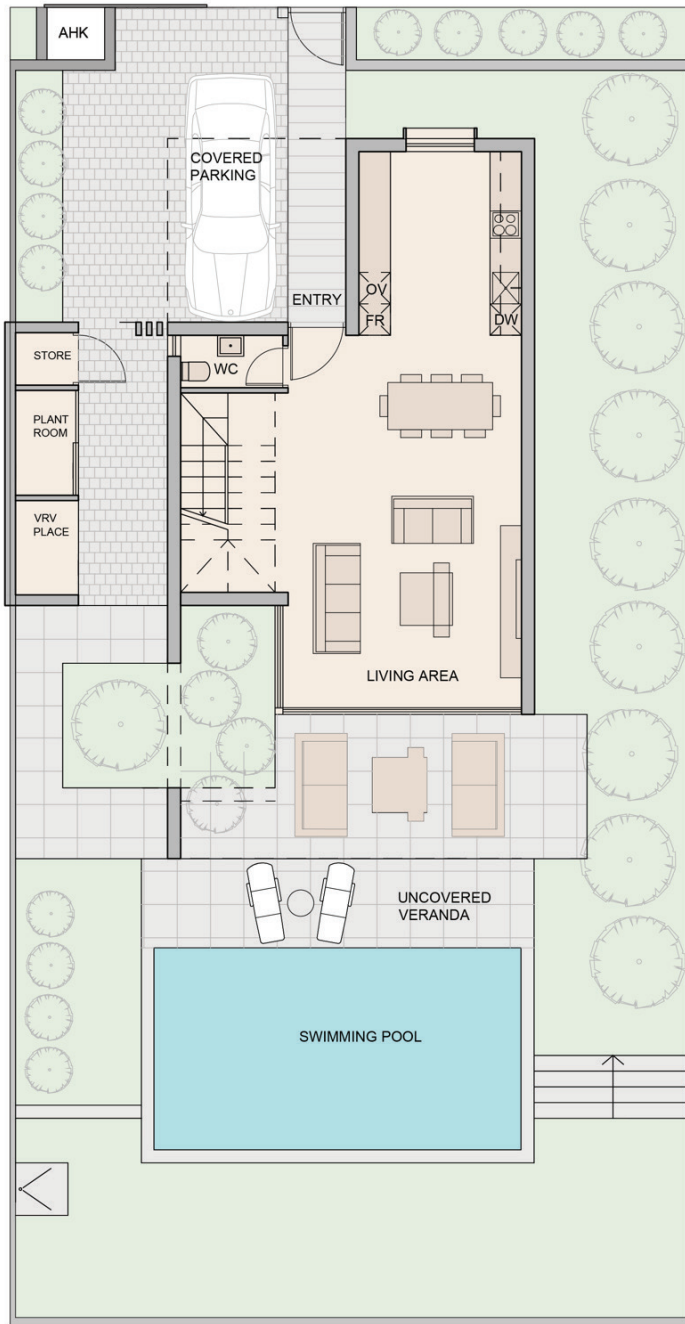
MASTERPLAN



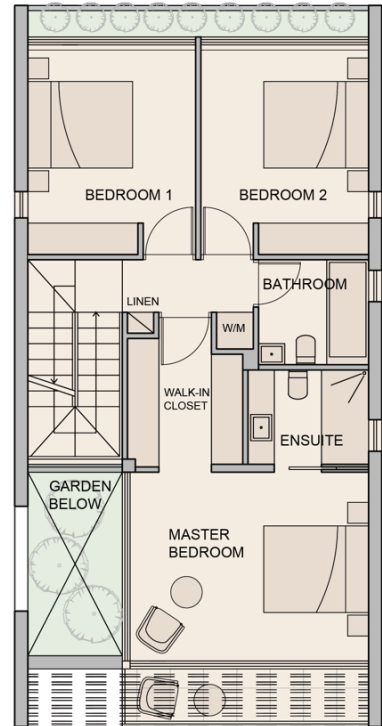
VILLA TYPE A



158 sqm | 3 Bedrooms | Plot: 290-325 sqm



GROUND FLOOR



FIRST FLOOR

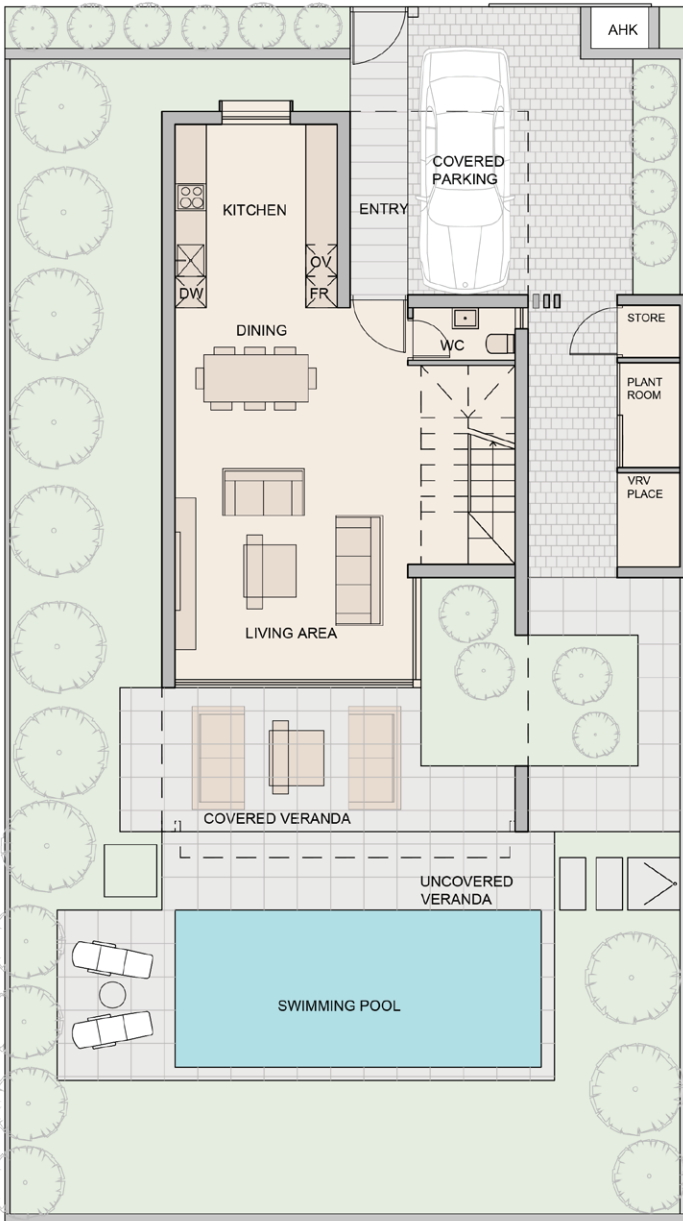
Exceptional Design Features | Double Height Living Area | Seamless Open-Plan Living | High Specifications Finishes | Walk-in Closet | Mediterranean Garden | Optional Pool | Underfloor Heating



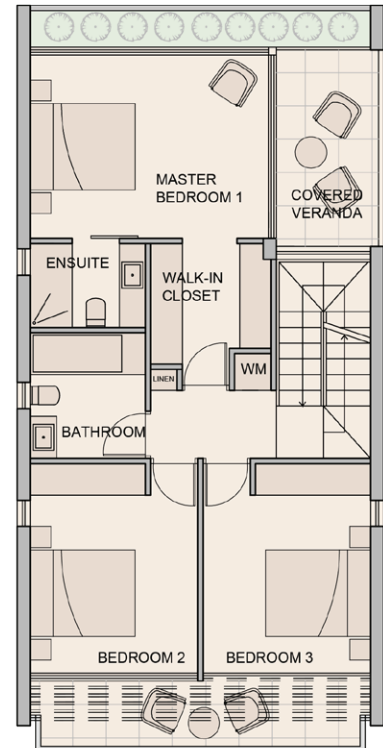
VILLA TYPE B



170 sqm | 3 Bedrooms | Plot: 295-310 sqm



GROUND FLOOR



FIRST FLOOR

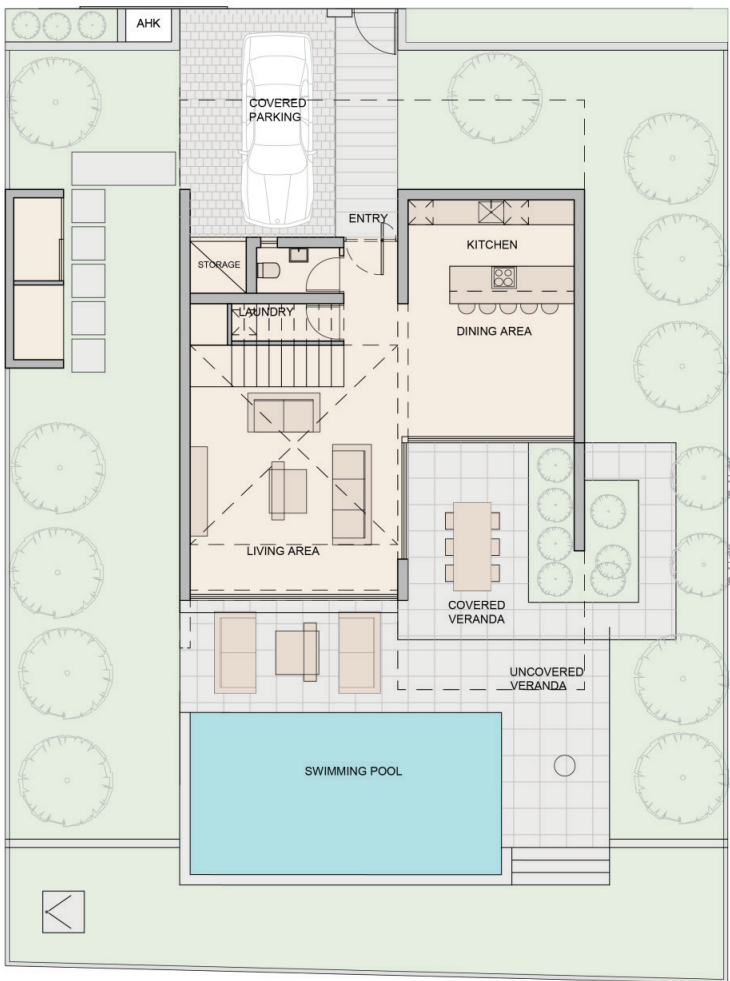
Exceptional Design Features | Double Height Living Area | Seamless Open-Plan Living | High Specifications Finishes | Walk-in Closet | Mediterranean Garden | Optional Pool | Underfloor Heating



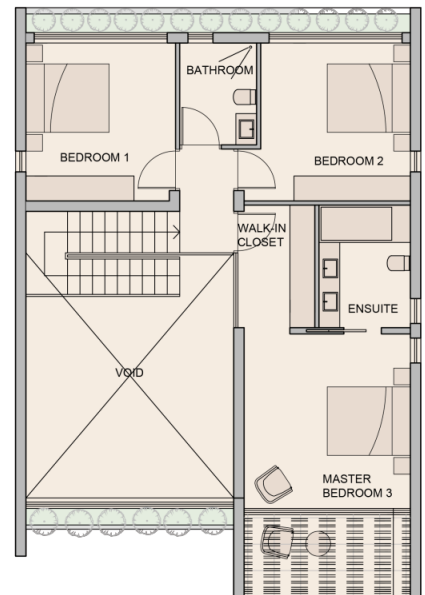
VILLA TYPE C



189 sqm | 3 Bedrooms | Plot: 365-415 sqm



GROUND FLOOR



FIRST FLOOR

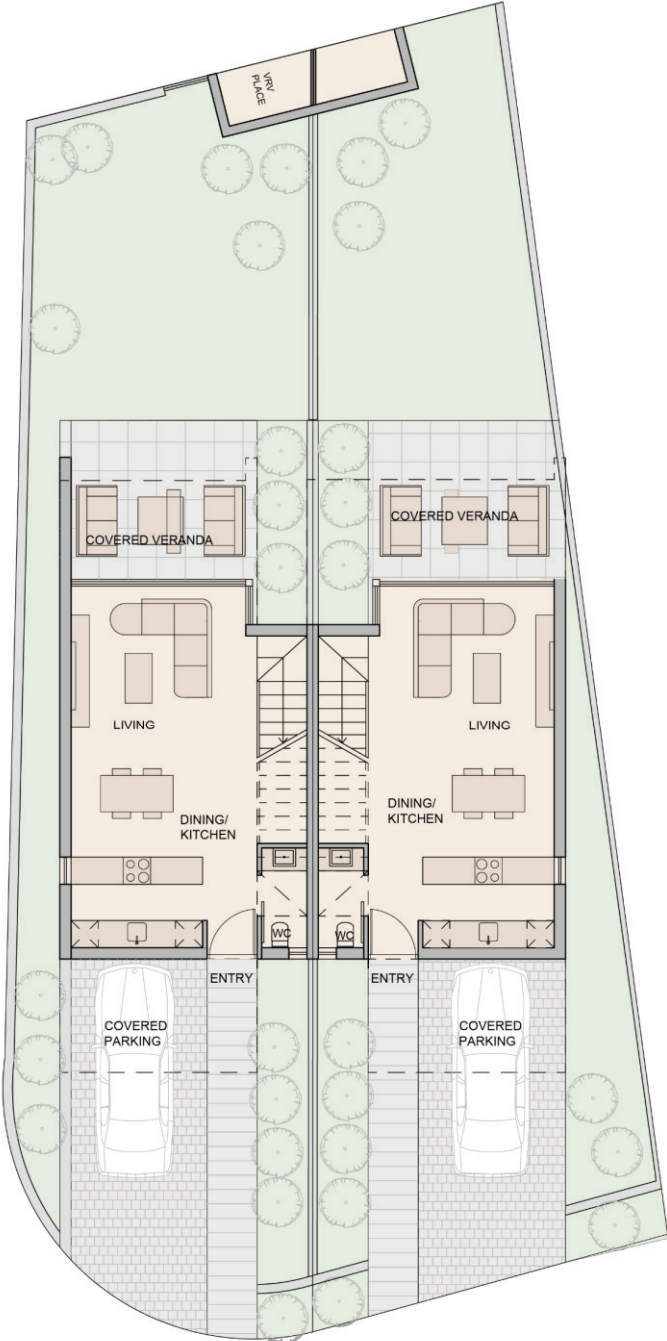
Exceptional Design Features | Double Height Living Area | Seamless Open-Plan Living | High Specifications Finishes | Walk-in Closet | Mediterranean Garden | Optional Pool | Underfloor Heating



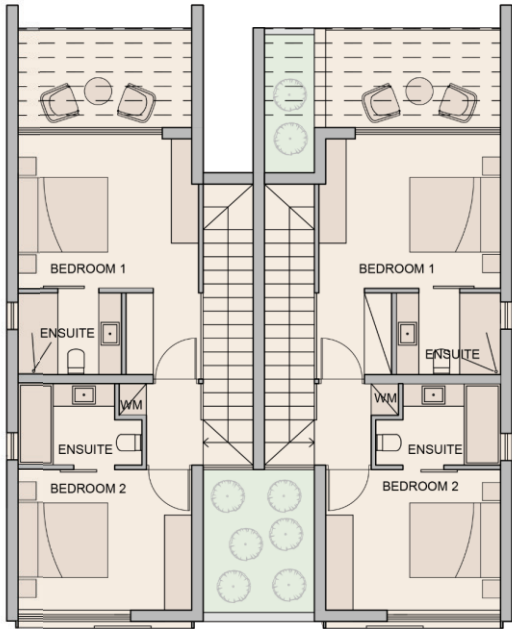
TOWNHOUSE



2 Bedrooms



GROUND FLOOR



FIRST FLOOR

Contemporary Design | Seamless Open-Plan Living |
Mediterranean Garden | Covered Veranda on both levels





FINISHES



All homes enjoy a high-quality finish internally and externally. The architect has used clean modern lines with natural materials and open spaces to achieve a perfect balance of design and practicality which is enhanced by Mediterranean planting all around.









PAPHOS



Pafos is almost an open-air museum in itself, UNESCO added the entire town to its world heritage list. Pafos is home to a great extent of the island's rich cultural heritage including a medieval fortress, frescoed tombs and remarkable mosaics. The town of Pafos is of outstanding universal value and it is included in the official UNESCO list of cultural and natural treasures of the world heritage. These historical sites date back thousands of years and include ancient theatres and colorful mosaics, to impressive fortresses and underground tombs.





A VIBRANT CITY



In addition to its rich culture, the Pafos area offers a wealth of amenities and facilities that cater to every need. It offers a large selection of restaurants serving both traditional and international cuisine, stylish cafes, entertainment complexes, boutiques and international stores. It also boasts numerous reputed international schools and an excellent selection of healthcare facilities.

TRADITIONAL & CONTEMPORARY DINING



Pafos is well known the quality and freshness of its cuisine. Pafos offers a wide selection of traditional taverns, local family-friendly restaurants known for their local produce and some of the best seafood restaurants on the island.



PAPHOS PRIVATE SCHOOLS



The private schools offer a well balanced education based on the English National Curriculum.



8 minute drive from Konia

The International School has been registered with the Cyprus Ministry of Education and Culture since 1987. It has strong links with the British Council and is registered as a centre with two of the most esteemed and well-known Examination Boards in England: Edexcel and CIE (Cambridge International Examinations).

The school follows the English National Curriculum, but has a more flexible approach as it is mindful of the local educational needs and culture. The school moved to new premises in 2006 which offer excellent classroom, leisure and recreation facilities. The school caters to children from Kindergarten to sixth form, preparing them for university.

www.paphosinternationalschool.com

PAPHOS PRIVATE SCHOOLS



PRIVATE
BRITISH SCHOOL



Aspire offers the UK National Curriculum: leading to GCSE, IGCSE and A level qualifications. Delivered by qualified and experienced teachers who recognise the importance of an inspirational learning environment. The ethos of ASPIRE Private British School is promoted in various ways including: Excellent teaching standards, positive reinforcement, Student Awards, competitive house system, displaying exceptional work and celebrating achievement.

Children have to be fluent in English before joining the classroom. Children who are not fluent in the language will spend time in our booster English class and slowly be integrated back into their school year as their fluency improves. The children work towards GCSE and A Level qualifications which can take them on to any UK, American or worldwide university. We are a fully licensed registered exam centre so children can take their exams in their familiar school surroundings.

www.aspirecoe.com

PAPHOS PRIVATE SCHOOLS



TLC Private School is about to start its tenth year as one of the premier private schools on the island of Cyprus with an extraordinary history. The school was launched in September 2010 with 17 students, 3 teachers and a classroom assistant. The school has gone from strength to strength and has reached a student body of 290 young people from the ages of 3 to 18. The school began with a set of core values, intrinsic to what it saw as being essential for the academic and social development of its students. Despite the growth in the school, it has retained its caring, family feel whilst providing rigour and challenge within the curriculum, supported by the dedicated teachers.

Recognising that school isn't just about academia, TLC Private School has sought over the years to provide its students with the means to develop life skills such as teamwork and cooperation, resilience and adaptability through sport, art and community work.

www.tlccyprus.com



CYPRUS HEALTHCARE AT A GLANCE



Cyprus' prestigious private healthcare facilities coupled with its large pool of highly educated healthcare professionals and expert services, have earned the island a reputation as a centre for medical excellence.

GESY, is the national, publicly funded, healthcare system, open to all residents.

GESY is a full-coverage healthcare program for all citizens of Cyprus and holders of a permanent residence status. This new system gives people a choice between the services of any doctor or other healthcare professional in the private or public sector.

For decades, the Cyprus health sector has been primarily known for its standards of excellence, with its highly trained and internationally experienced professionals, specialised medical services and globally renowned research. The majority of its medical professionals are educated at top-tier universities in the UK, Greece, Western Europe, the US and Russia. That is why healthcare in Cyprus is recognised by the World Health Organisation to be on a par with developed countries.

In fact, the Lancet's healthcare ranking places Cyprus in 26th position in a global comparison – sitting higher than the likes of Portugal, Croatia, and the US.

24th

Out of 195 countries for access to quality health services in
Healthcare Access and Quality Index (HAQ)

75

Hospitals and Clinics

5

Direct Hospitals



Pafilia

PROPERTY DEVELOPERS

LARGEST PRIVATE DEVELOPER IN CYPRUS

Delivering outstanding quality, concept and design.

250⁺

Over 250 developments delivered

48

Years of experience

93

International awards

VALUE ADDING SERVICES

- ▣ Rental management
- ▣ Rentals
- ▣ Resales
- ▣ Cleaning, Maintenance and repairs
- ▣ Landscaping and gardening





KONIA GREEN

The contents and information contained in this brochure are intended for general marketing purposes only and must not be construed as advice, or being complete and accurate nor be relied upon as such. The photographs of the surrounding views and location may have been digitally enhanced or altered and do not represent actual views or surrounding views. These photographs are indicative only. Fittings and finishes are subject to availability and company's discretion. Prospective purchasers should make and must rely on their own enquiries. This brochure is a guide only and does not constitute an offer or contract. Neither the company nor any of its directors or employees give any representation or warranty as to the reliability of the information contained herein, and shall not be responsible and disclaim all loss, liability or expense of any nature whatsoever which may be attributable (directly, indirectly or consequentially) to the use of the information provided.