

ELYSIA BLU



WHERE THE FUTURE OF LIVING BEGINS



WELCOME TO ELYSIA BLU

A lifestyle-centric residential development where modern architecture meets the effortless rhythm of Mediterranean living. Designed for modern life, this exclusive development is more than a home, it's a lifestyle statement.



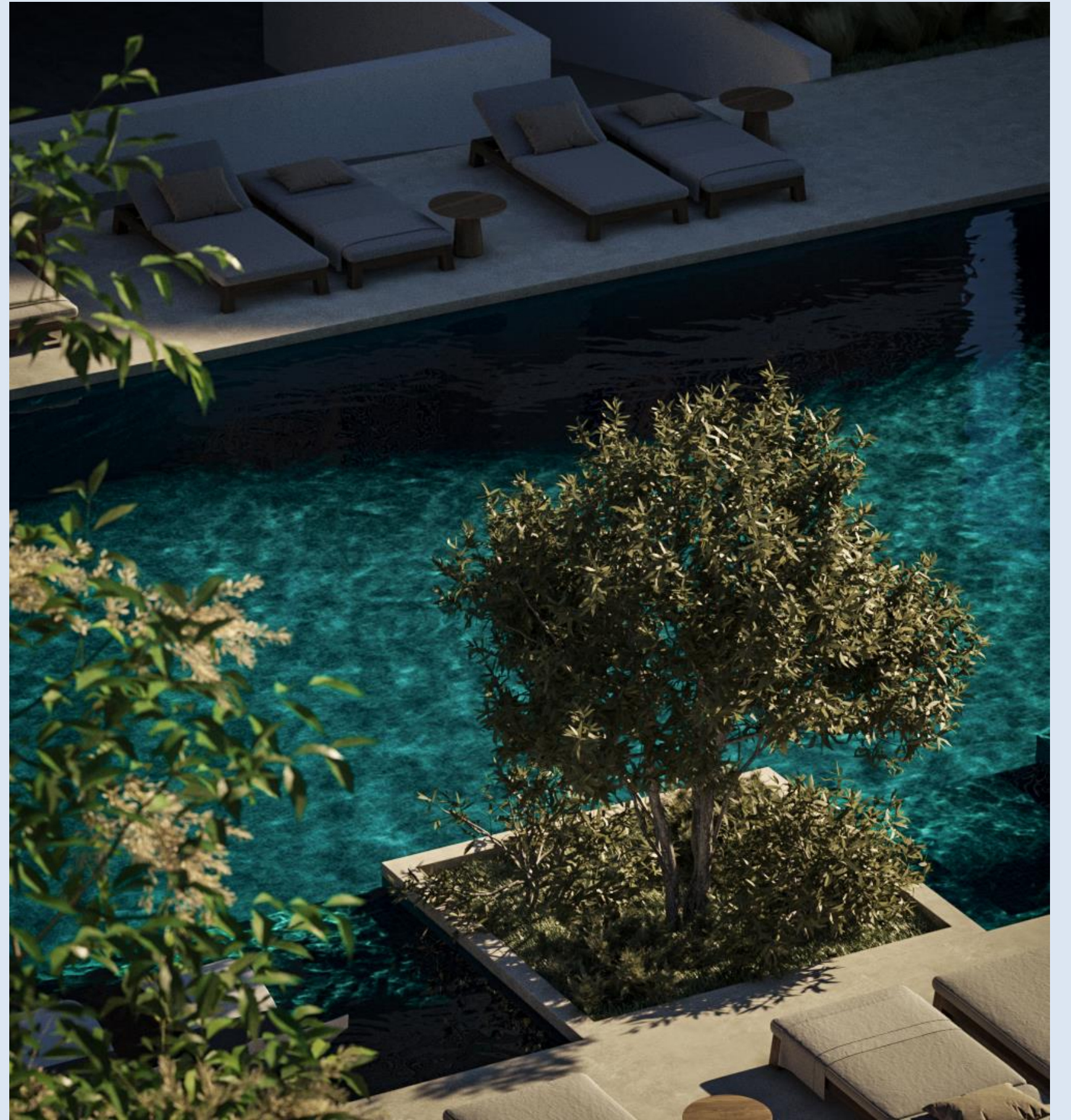


Perfectly positioned in one of Paphos' most coveted locations, Elysia Blu places you at the heart of it all—*just a 10-minute walk from the seafront*, surrounded by culture, commerce, and natural beauty. Here, urban energy meets tranquil retreat.

- 10 architecturally striking residential buildings
- 200 elegantly designed apartments
- A wealth of lifestyle-centric facilities
- Expansive landscaped gardens, designed as serene urban sanctuaries
- A seamless living experience, capturing the essence of Mediterranean elegance

Step inside and discover a new paradigm of design-forward living—where clean lines, natural light, and refined materials create spaces that are both inspiring and timeless.







A MASTERPIECE IN PHASES



Elysia Blu is designed as a multi-phase architectural journey, ensuring a thoughtful and cohesive evolution into Paphos' most sought-after residential destination.

PHASE 1A

THE FOUNDATION OF ELEGANCE

- Four contemporary residential buildings with striking facades
- A resort-style swimming pool and a dedicated children's pool
- Lush communal gardens, designed for tranquility and connection



PHASE 1B

THE BEATING HEART OF THE COMMUNITY

- Six additional residential buildings, sculpted in light and form
- A grand, hotel-inspired lobby—a statement of sophistication
- A second resort pool and children’s pool, crafted for leisure

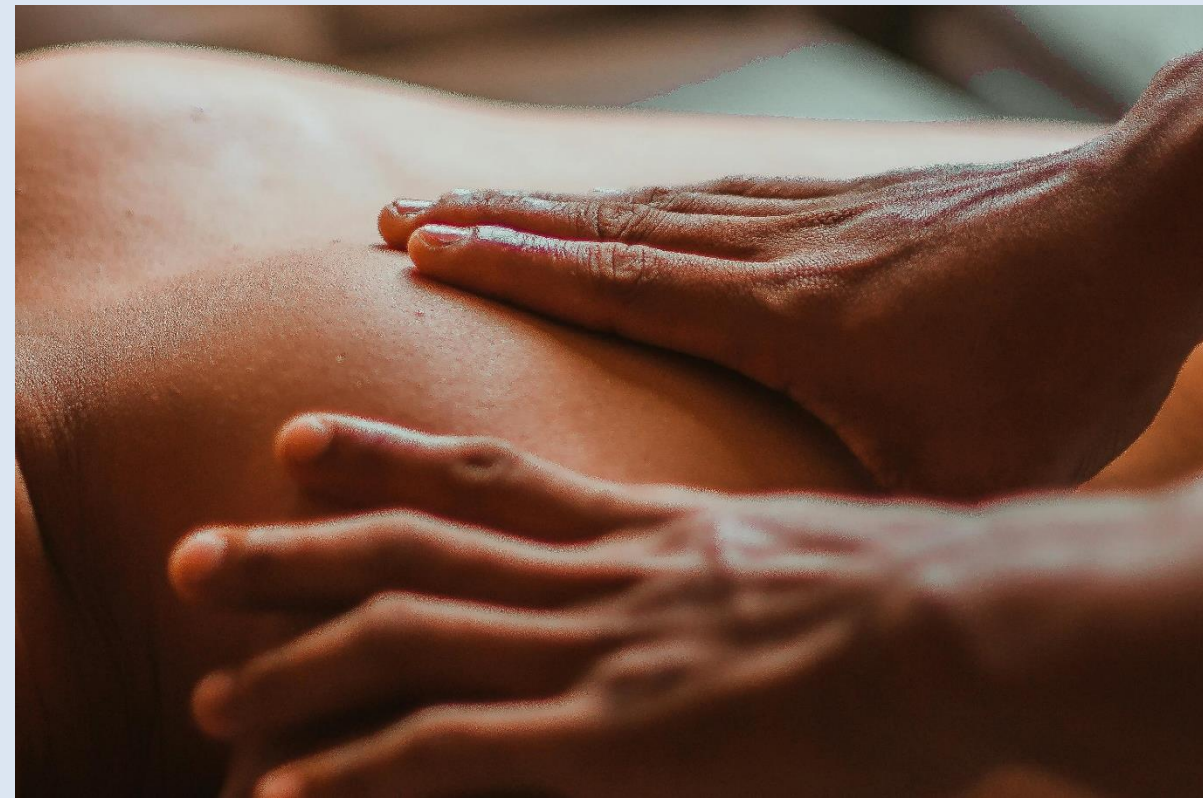
A curated selection of lifestyle amenities, including:

- A boutique kiosk and mini-market for effortless convenience
- An exclusive wellness spa, a sanctuary of relaxation
- A sophisticated restaurant, redefining everyday indulgence
- A vibrant kids' club, designed for imagination and play



WHERE WELLNESS AND DESIGN INTERSECT

At Elysia Blu, every space is designed to enrich well-being—a curated environment that inspires movement, mindfulness, and social connection. The curated wellness experience includes a state-of-the-art fitness area, spa, sauna, jacuzzi, and indoor and yoga spaces.





THE OUTDOOR OASIS

The thoughtfully designed social and recreational areas have been designed to foster connection.

- Expansive resort pools, shimmering under the Mediterranean sun
- A professional-grade padel court, inviting friendly competition
- An outdoor fitness pavilion, where nature and performance unite
- A thoughtfully designed children's play area, where curiosity thrives

SPACES TO CONNECT & BELONG



- An inspired indoor and outdoor kids' club, fostering creativity and exploration
- Lounge spaces for social connection, designed for meaningful moments
- A curated events program, transforming Elysia Blu into a vibrant community

CULINARY & LIFESTYLE INDULGENCE

- A signature restaurant / cafe, where local flavors meet innovation
- A boutique market, offering hand-selected essentials for refined living



THE PERFECT LOCATION

Surrounded by mature trees and just a 10-minute walk to the seafront.

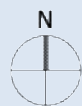


MASTERPLAN



MASTERPLAN

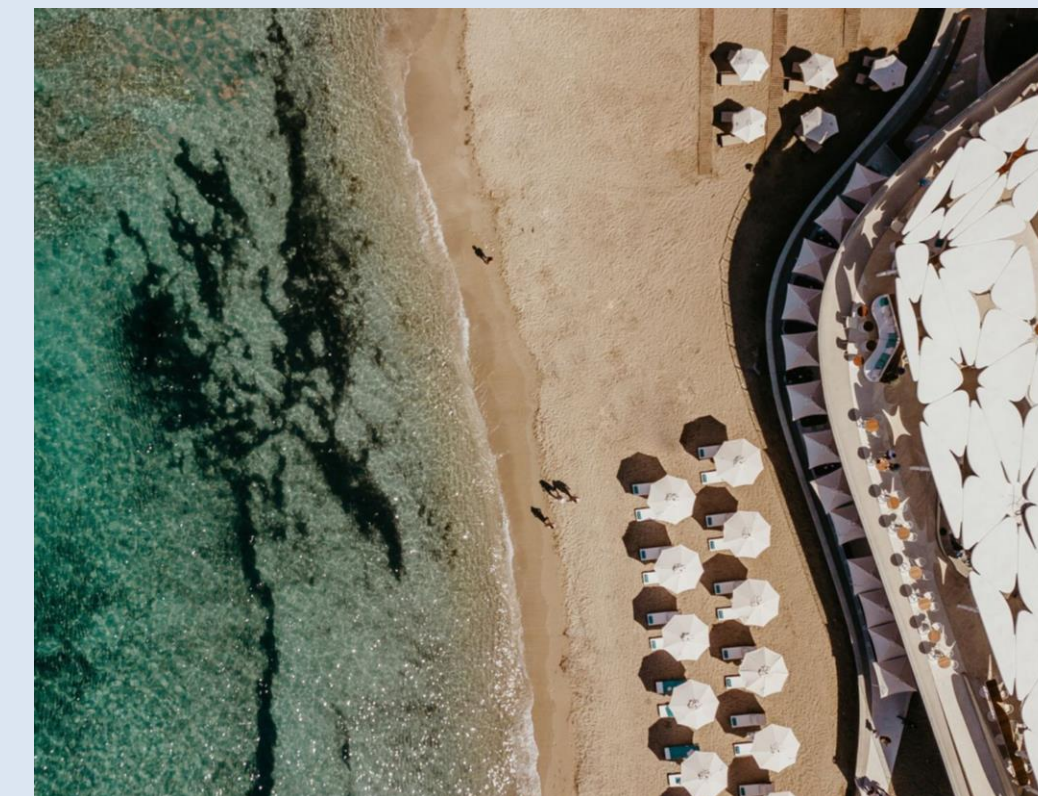
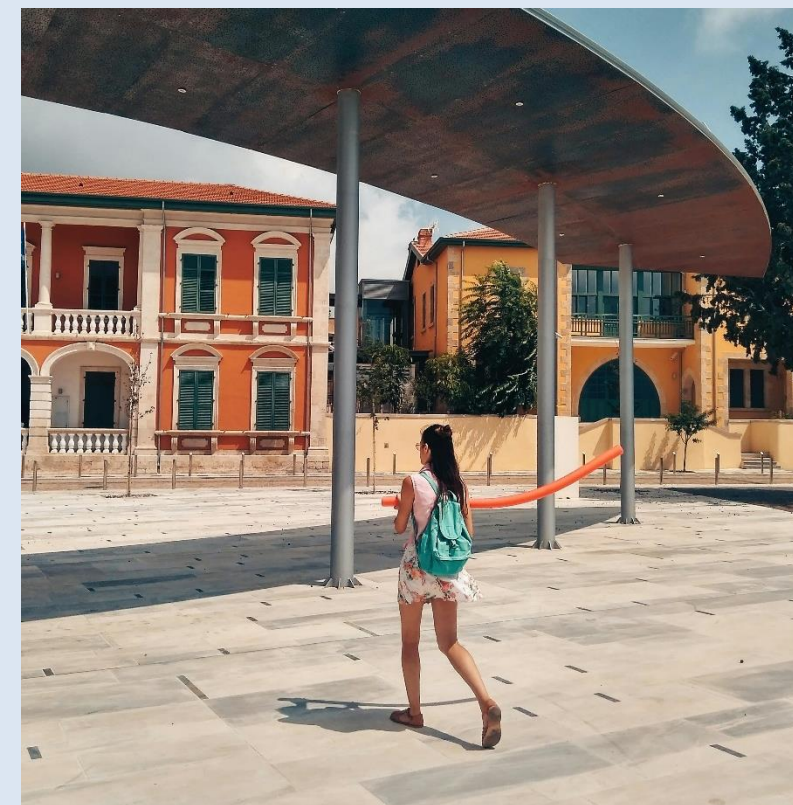
- 1 ENTRANCE
 - 2 RESORT RECEPTION
 - 3 KIOSK
 - 4 RESTAURANT
 - 5 SPA
 - 6 POOL
 - 7 KIDS' POOL
 - 8 OUTDOOR GYM
 - 9 YOGA GREEN
 - 10 PADEL TENNIS
 - 11 RUNNING-WALKING PATH
 - 12 INDOOR KIDS' CLUB
 - 13 PLAYGROUND
 - 14 TRAMPOLINE
-
- 15 BLOCK A
 - 16 BLOCK B
 - 17 BLOCK C
 - 18 BLOCK D
 - 19 BLOCK A2
 - 20 BLOCK B2
 - 21 BLOCK C2
 - 22 BLOCK D2
 - 23 BLOCK E2
 - 24 BLOCK F2
 - 25 PUBLIC PARKING SPACE





A PRIME LOCATION THAT REDEFINES CONVENIENCE

Elysia Blu is not just connected to Paphos—it is at its heart. A sanctuary of serenity, yet mere minutes from the city’s vibrant cultural scene, world-class dining, and pristine beaches. This is where effortless accessibility meets urban sophistication.

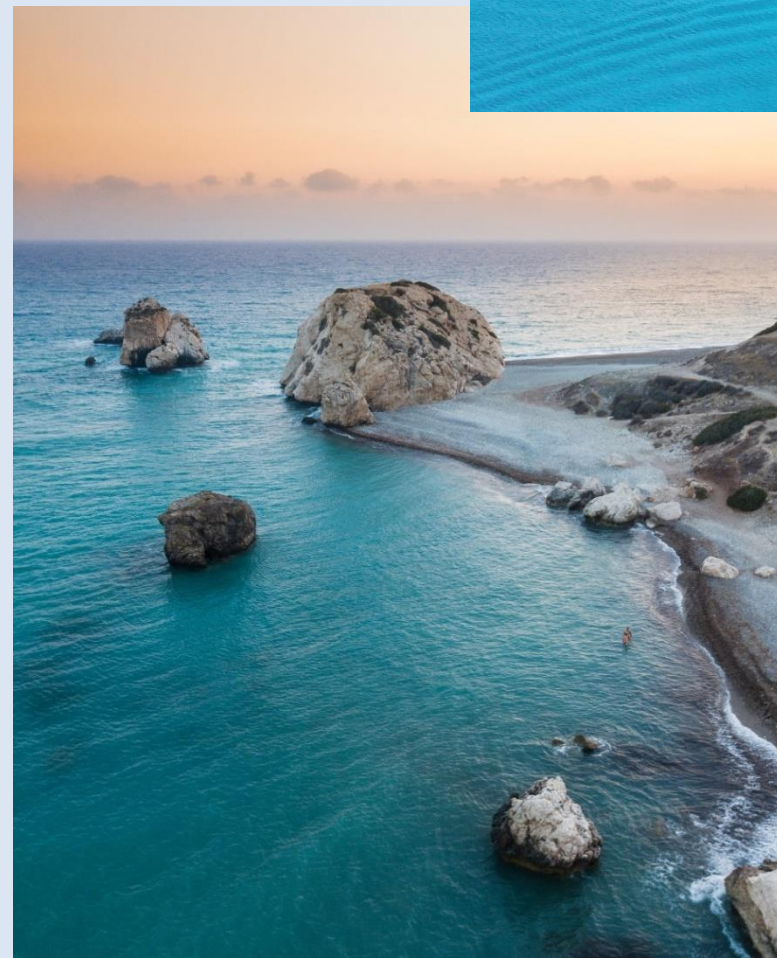


A VIBRANT CITY

The town of Paphos is of outstanding universal value and it is included in the official UNESCO list of cultural and natural treasures of the world heritage. These historical sites date back thousands of years and include ancient theatres and colorful mosaics, to impressive fortresses and underground tombs.

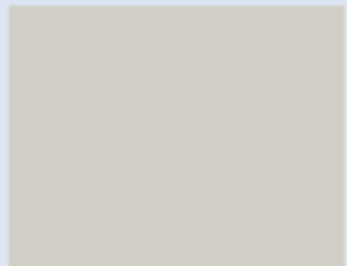


PAPHOS

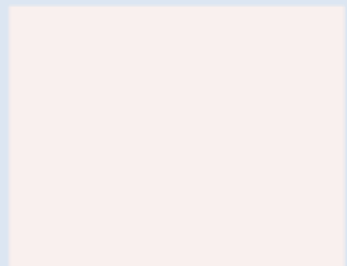




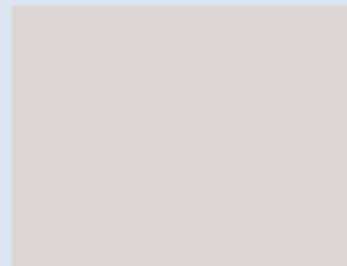
FLOOR PLANS



1 BEDROOM



2 BEDROOMS

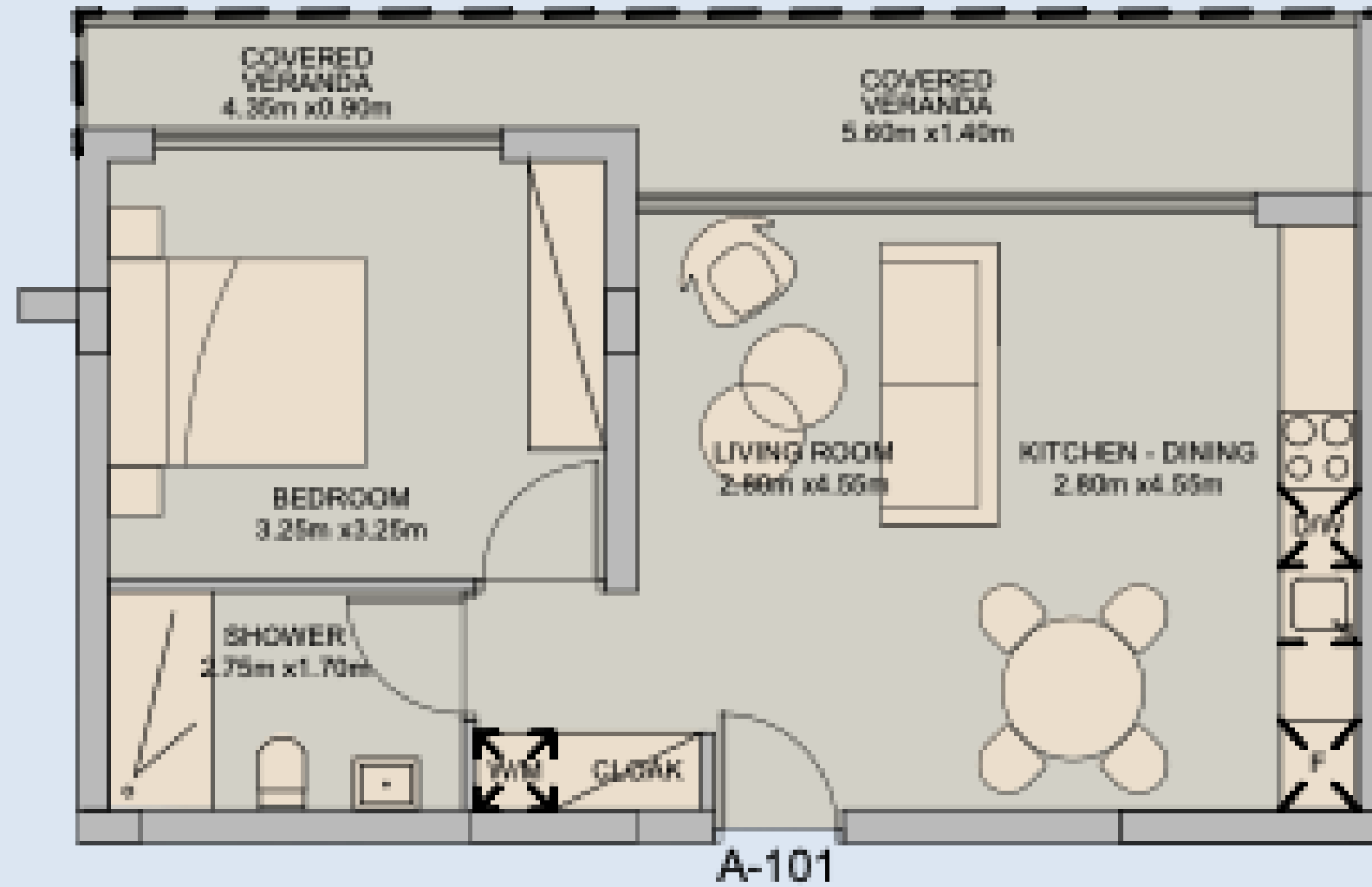


3 BEDROOMS



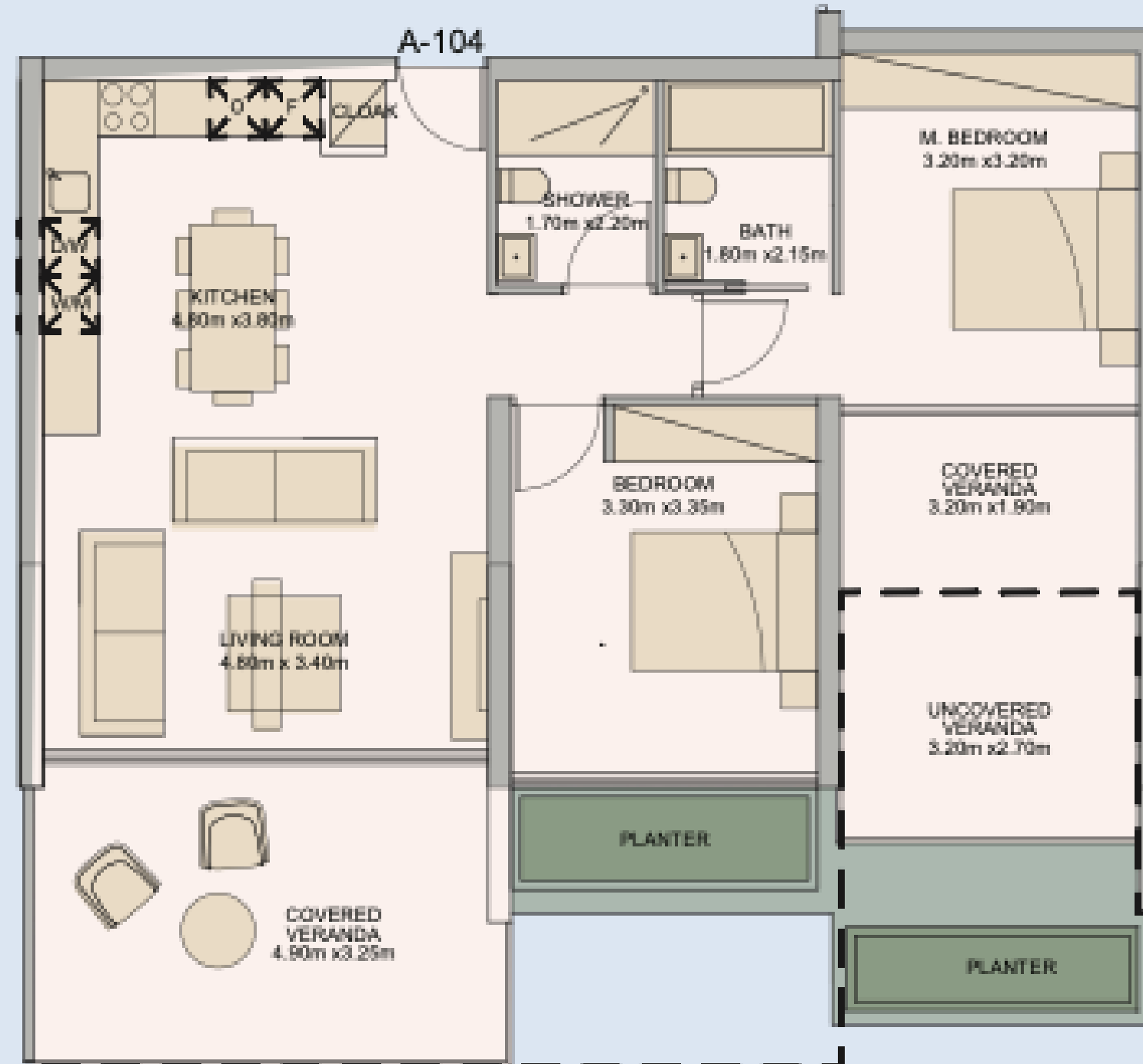
ELYSIA BLU BLOCK A

1 BEDROOM APARTMENT

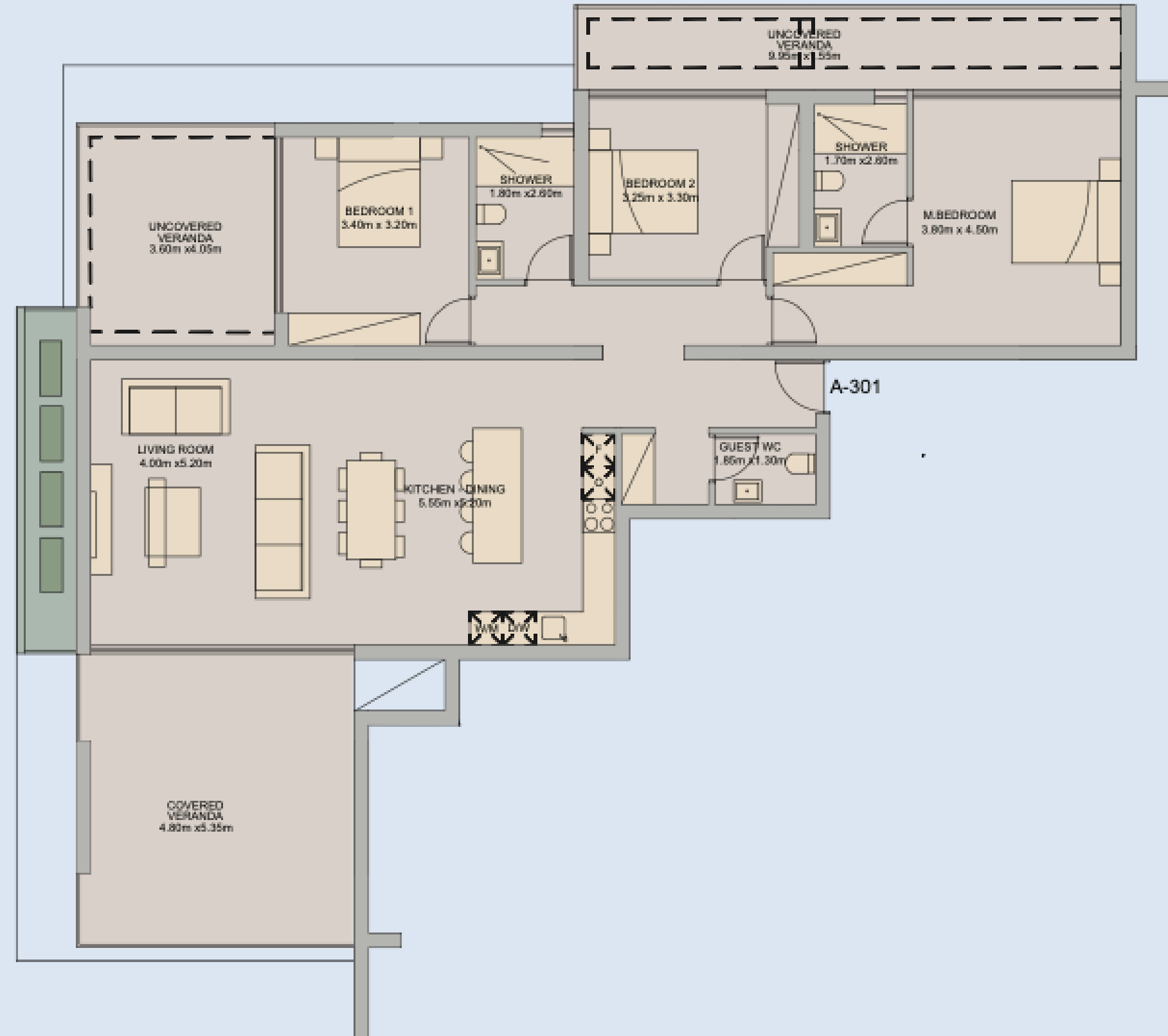


ELYSIA BLU BLOCK A

2 BEDROOM APARTMENT



3 BEDROOM APARTMENT



FIRST FLOOR



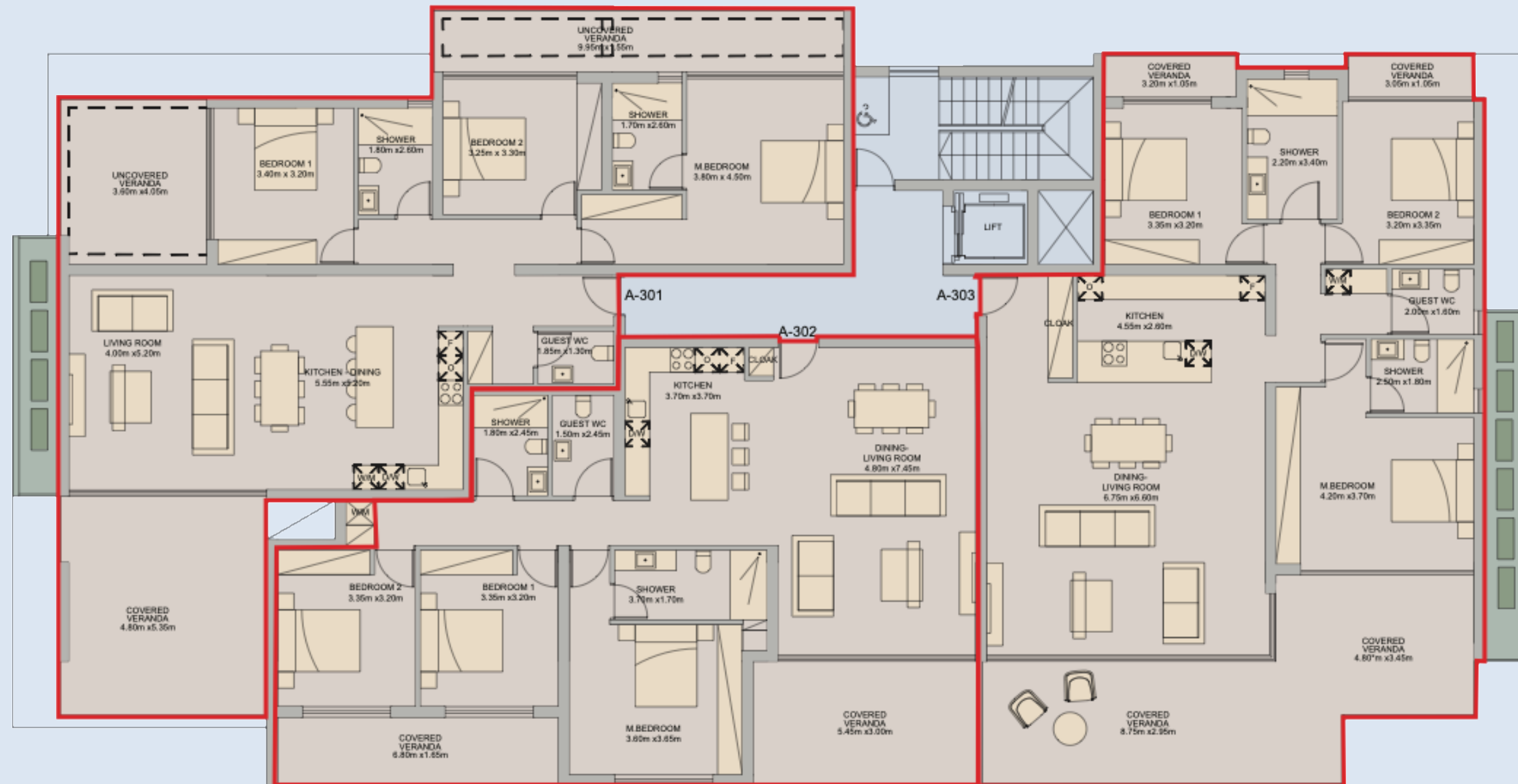


SECOND FLOOR





THIRD FLOOR





WHERE THE FUTURE OF LIVING BEGINS