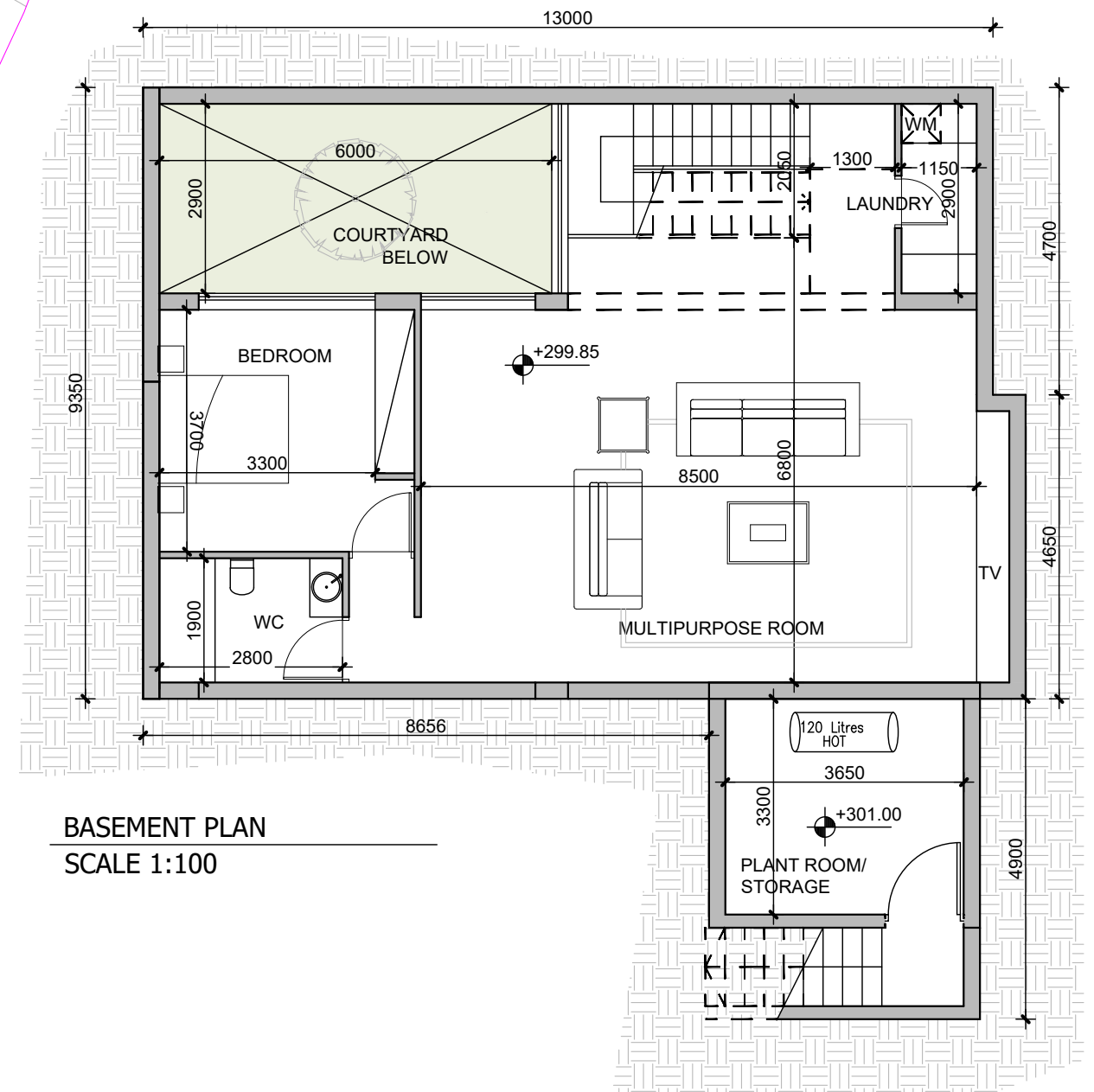


PLOT AREA 1108 SQM

TOTAL BUILT AREA 326.5 SQM
(INCLUDING STORAGE AND PLANT ROOM)

BASEMENT
BUILT AREA 104 SQM
MECHANICAL ROOM 14,5 SQM



OLIAS HOMES
PLOT 617

vardastudio
architects + designers

Andreas Vardas BA(HONS), DIP(ARCH), RIBA Chartered Architect
tel. 26947266 / 99427634 fax. 26220886 email vardas@spidernet.com.cy

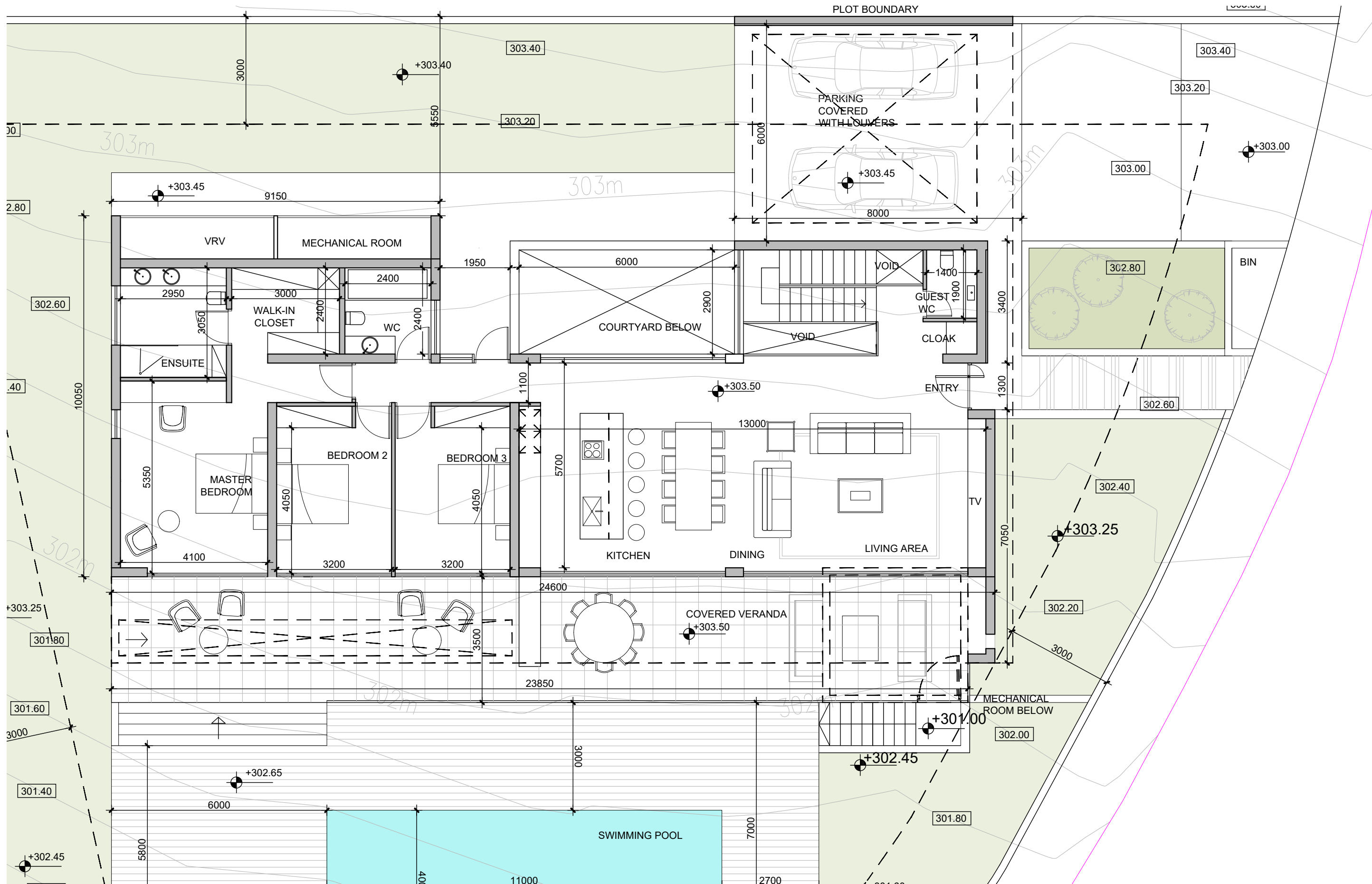
SALES
NOVEMBER 2023

drawn: LP
check: A Vardas

SITE PLAN
BASEMENT

1:100@A3

DWG NO. AP 00



GROUND FLOOR PLAN

SCALE 1:100

PLOT AREA 1108 SQM

TOTAL BUILT AREA 326.5 SQM
(INCLUDING STORAGE AND PLANT ROOM)

GROUND FLOOR

BUILT AREA 198 SQM
 MECHANICAL 10 SQM
 COVERED VERANDA 44 SQM
 COVERED VERANDA WITH LOUVERS 13 SQM
 COVERED PARKING WITH LOUVERS 46 SQM

**OLIAS HOMES
PLOT 617**

vardastudio
architects + designers

Andreas Vardas BA(HONS), DIP(ARCH), RIBA Chartered Architect
tel. 26947266 / 99427634 fax. 26220886 email vardas@spidernet.com.cy

SALES
NOVEMBER 2023

drawn: LP
check: A Vardas

GROUND FLOOR

1:100@A3

DWG NO. AP 01