



ARK NOAH'S  
DEVELOPMENTS

# Celistra

Modern living with a  
*Mediterranean rhythm*



\* the visualization is for illustrative purposes only

Construction Duration:

24 months from the date  
the permit is received

Brand-new residential development in the fast-growing district of Zakaki Limassol —  
a location where modern lifestyle meets strong investment opportunities

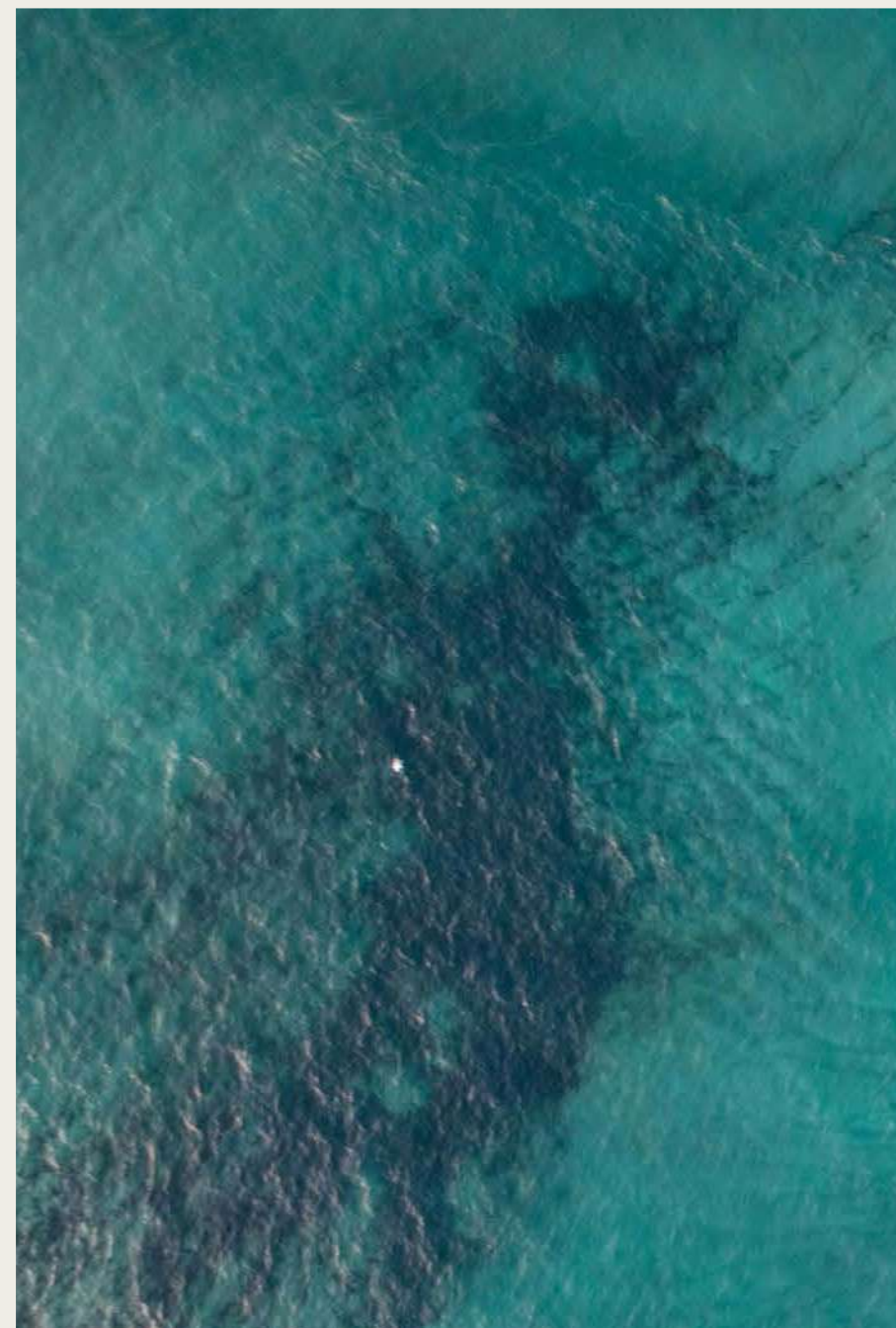


ARK NOAH'S  
DEVELOPMENTS



\* the visualization is for illustrative purposes only

# Noah's Ark Developments is a trusted name in the real estate industry



---

Over  
**5 years**

of successful experience  
in the Cyprus real  
estate market



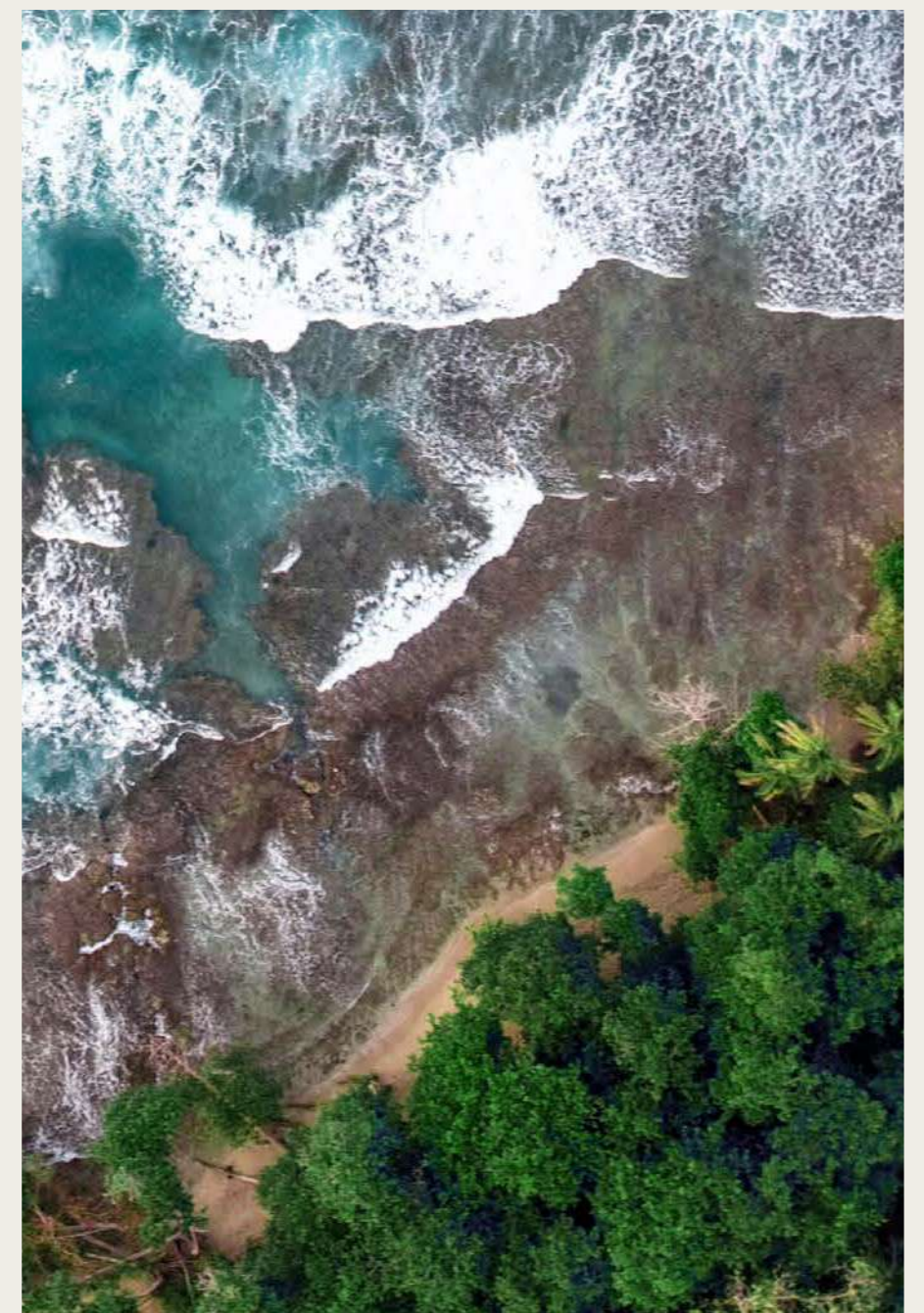
***In-house***  
construction  
company

and a team of 130+ highly  
skilled professionals

***Experienced*** team

ensuring quality control  
and timely project delivery

---



# Experience the New Face of Limassol Living



CELISTRA is a brand-new residential development in the fast-growing district of Zakaki Limassol — *a location where modern lifestyle meets strong investment opportunities*

**The project offers 1- and 2-bedroom apartments and penthouses, all within two contemporary blocks (A & B).**

Every apartment includes smart layouts, private storage, and covered parking, while the penthouses additionally feature rooftop gardens

**Elegant lobbies and thoughtfully designed common areas** create a welcoming atmosphere, blending modern aesthetics with natural textures to reflect the project's refined character.

For those seeking more exclusivity, CELISTRA also offers penthouses with **private roof gardens and panoramic views of the sea, mountains, and the City of Dreams Casino.**

\* the visualization is for illustrative purposes only

# Your Space, Your View, *Your Future*

*Stylish architecture*  
with open and functional living spaces

\* the visualization is for illustrative purposes only



→ **Outdoor swimming pool** and fully equipped **gym** for residents

→ **Large private balconies** (13–34 m<sup>2</sup>) with access to relaxing green spaces

→ **1- and 2-bedroom apartments,** plus penthouses with rooftop gardens

→ **Covered parking** & private storage rooms

→ **Panoramic views** of the city, sea, mountains, and casino

→ **Energy-efficient** systems and sustainable design



# The Perfect Balance — Coastal Calm and City Pulse

Zakaki is one of Limassol's fastest-growing districts — the western gateway to the city — with direct access to beaches, shopping, entertainment, and business hubs

1 km

*Lady's Mile Beach*

1 km

*Limassol Greens Golf Resort*

10 minutes drive

*Limassol Marina & City Center*

650 m

*City of Dreams Casino & Resort*

350 m

*MyMall Limassol*



# Every Detail Designed for Elevated Everyday Living



At Celistra, every apartment  
*is designed to bring calm, light,  
and elegance into daily life*

→ **Elegant 1- & 2-bedroom** apartments and signature **penthouses**

→ **Refined interiors** with natural materials and soft tones

→ **A harmonious blend** of design, light, and comfort

→ **Spacious balconies** for relaxation and sea views



# From Compact Comfort to Penthouse Prestige



For the full apartment list,  
please contact our manager

TYPE	INTERNAL (M <sup>2</sup> )	COVERED VERANDAS (M <sup>2</sup> )	UNCOVERED VERANDAS (M <sup>2</sup> )	POOL	ROOF GARDEN (M <sup>2</sup> )	TOTAL (M <sup>2</sup> )
1-Bedroom	50–51	12–15	–	–	–	62–66
1-Bedroom (Penthouse)	51	13	–	–	42	106
2-Bedroom	75–79	20–24	0-11	–	–	94–113
2-Bedroom (Penthouse)	75	19–20	0-1	–	44–54	139–149
2\3-Bedroom (Penthouses)	93–101	26–27	18–23	9–19	33–35	182–202

## *VRF Air Conditioning System and Underground Floor Heating*

high-efficiency  
heating and cooling  
for optimal comfort



## *Furniture and Appliance Package*

fully furnished  
apartment ready  
for immediate move-in

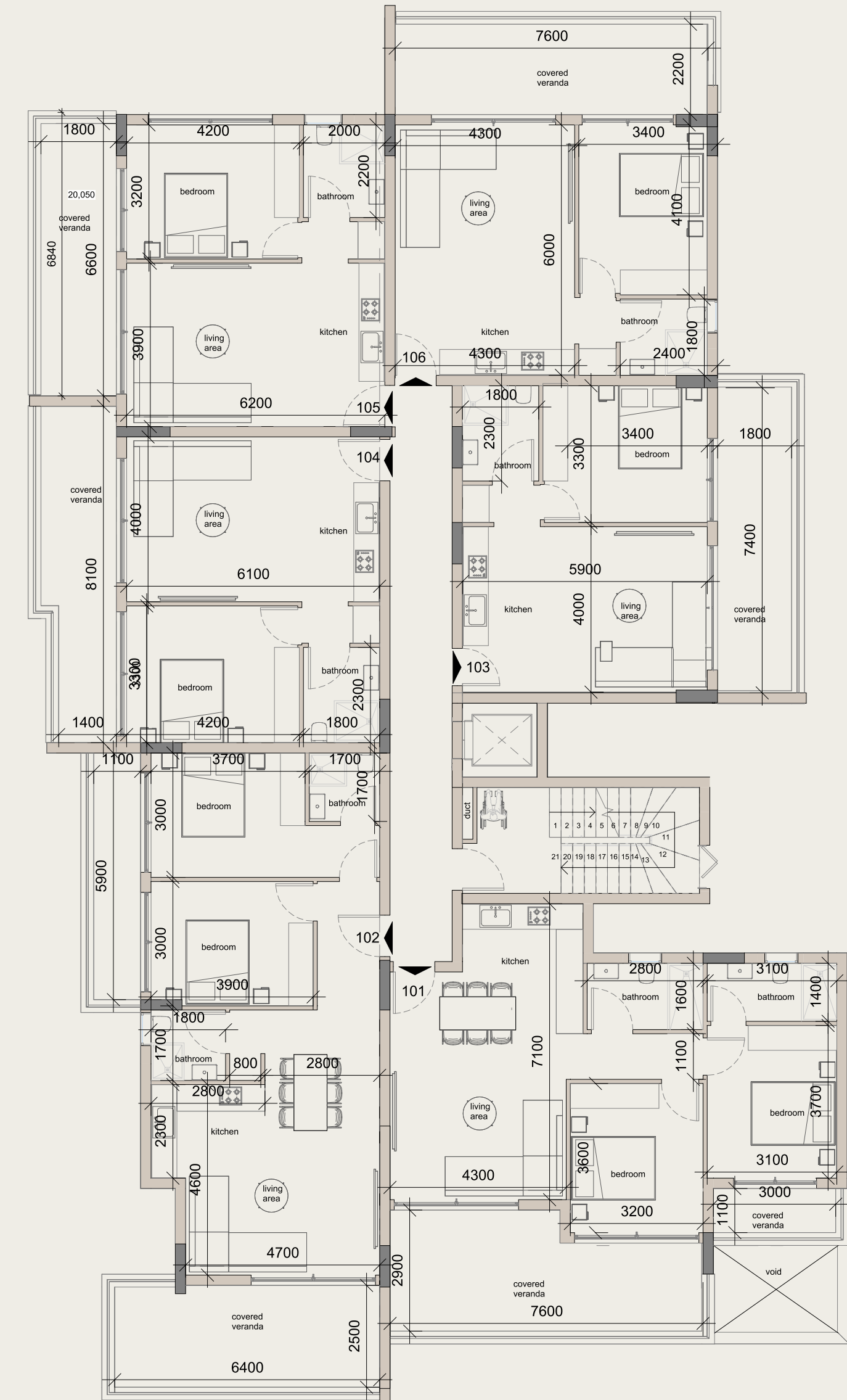


# Tailored Options to match your needs

Choose between  
two preferences

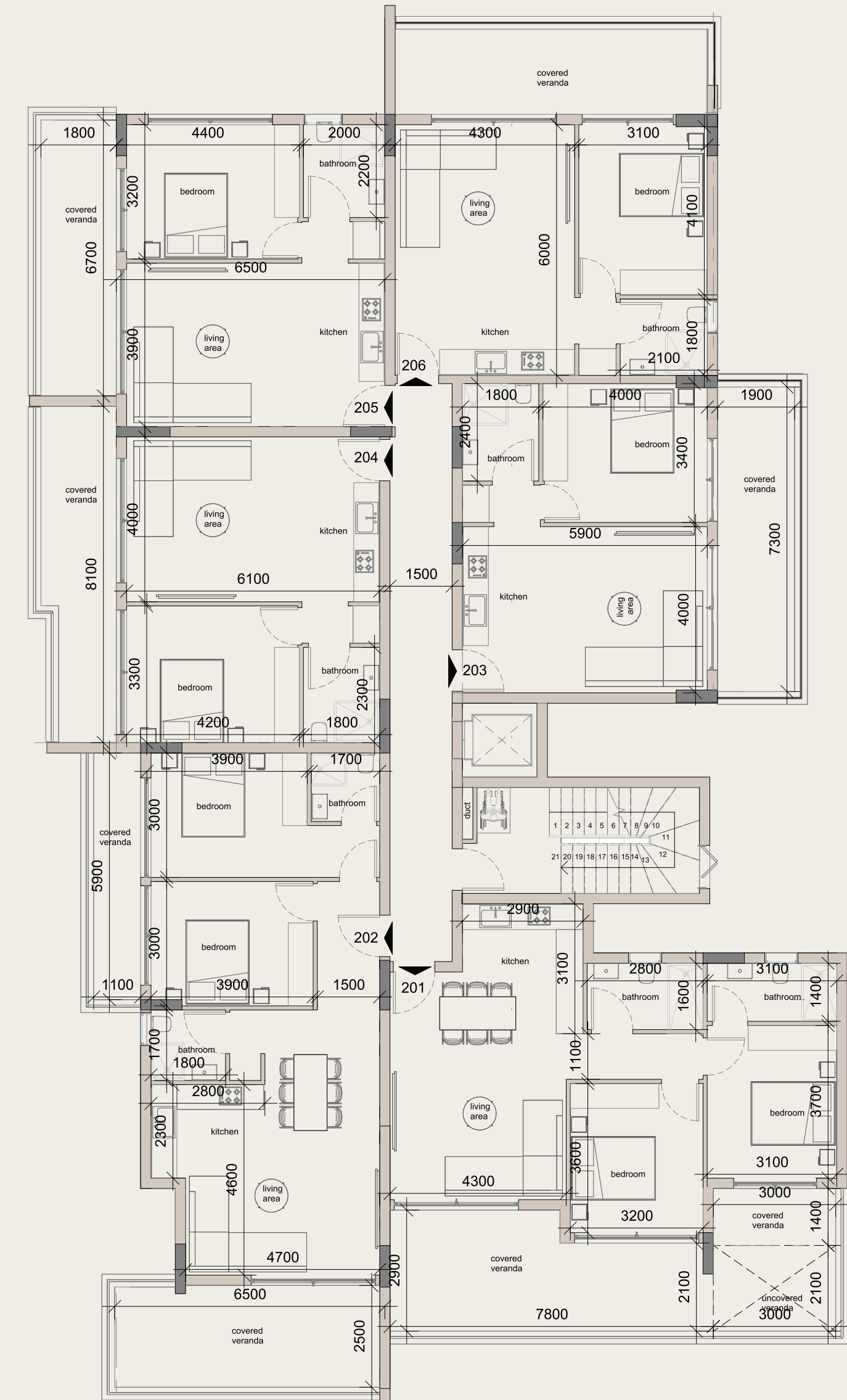
# Block A, *First floor*

TYPE	INTERNAL (M <sup>2</sup> )	COVERED VERANDAS (M <sup>2</sup> )	UNCOVERED VERANDAS (M <sup>2</sup> )	TOTAL (M <sup>2</sup> )	FLAT N <sup>o</sup>
1-Bedroom	50	12	—	62	105
		13	—	63	103
2-Bedroom	75	13	—	64	104
		15	—	66	106
		23	—	98	101
		23	—	98	102



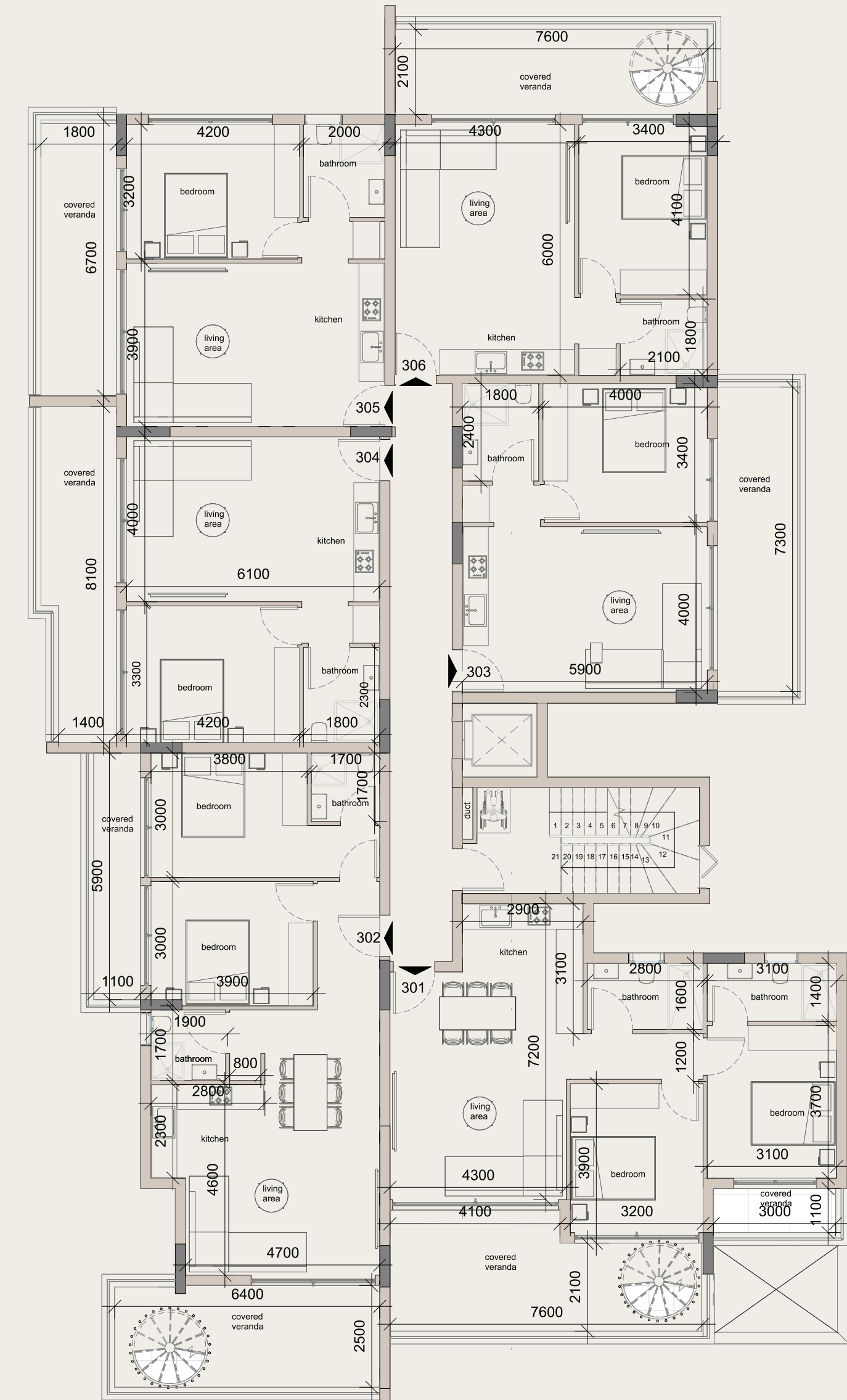
# Block A, *Second floor*

TYPE	INTERNAL (M <sup>2</sup> )	COVERED VERANDAS (M <sup>2</sup> )	UNCOVERED VERANDAS (M <sup>2</sup> )	TOTAL (M <sup>2</sup> )	FLAT N <sup>o</sup>
1-Bedroom	50	12	—	62	205
		13	—	63	203
2-Bedroom	51	13	—	64	204
		15	—	66	206
	75	23	—	98	202
	20	4	—	99	201



# Block A, *Third floor*

TYPE	INTERNAL (M <sup>2</sup> )	COVERED VERANDAS (M <sup>2</sup> )	UNCOVERED VERANDAS (M <sup>2</sup> )	ROOF GARDEN (M <sup>2</sup> )	TOTAL (M <sup>2</sup> )	FLAT N <sup>o</sup>
1-Bedroom	50	12	—	—	62	305
		13	—	—	63	303
2-Bedroom	51	13	—	—	64	304
		13	—	42	106	PENTHOUSE 306
	75	19	1	44	139	PENTHOUSE 302
	20	—	54	149	PENTHOUSE 301	



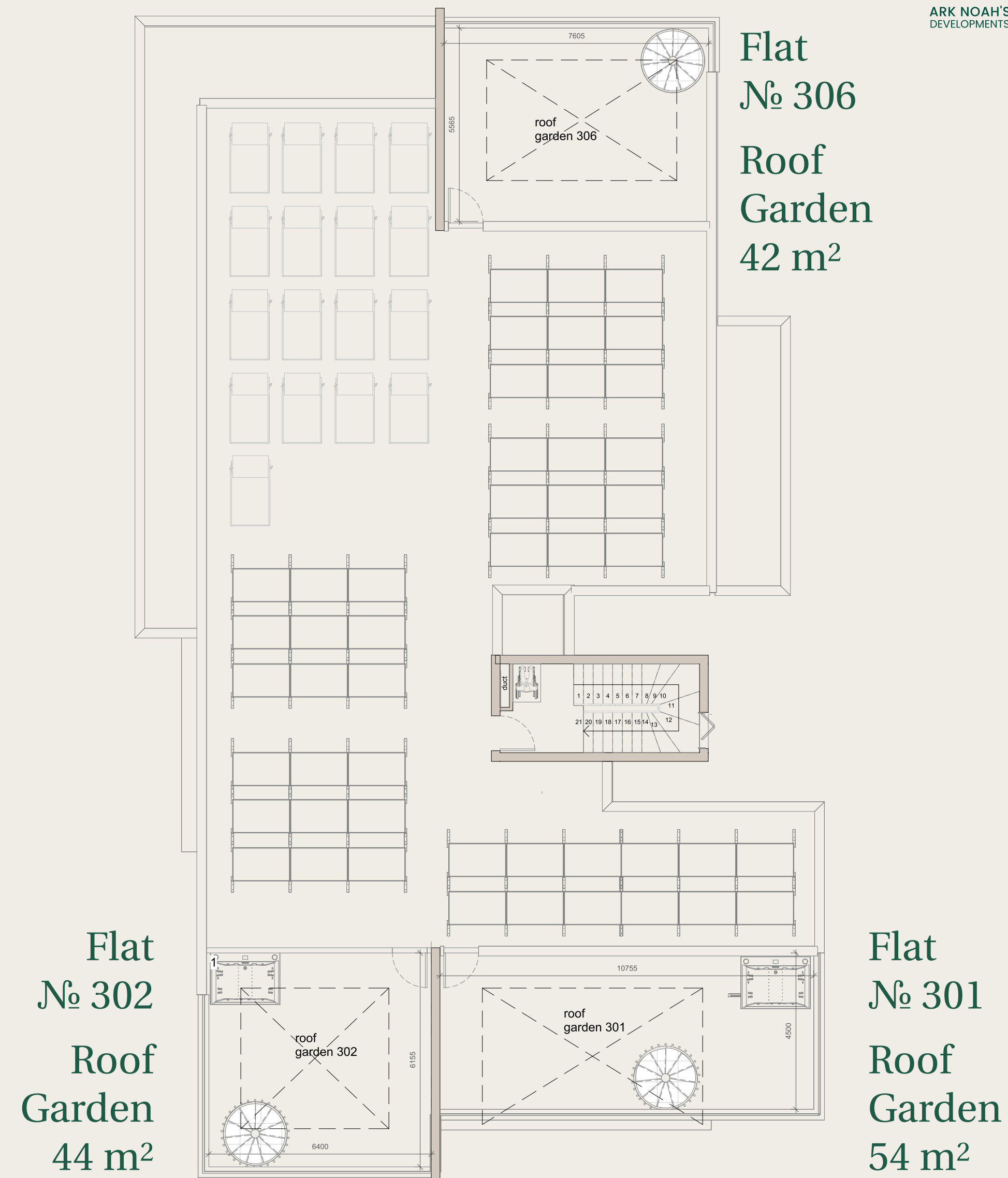


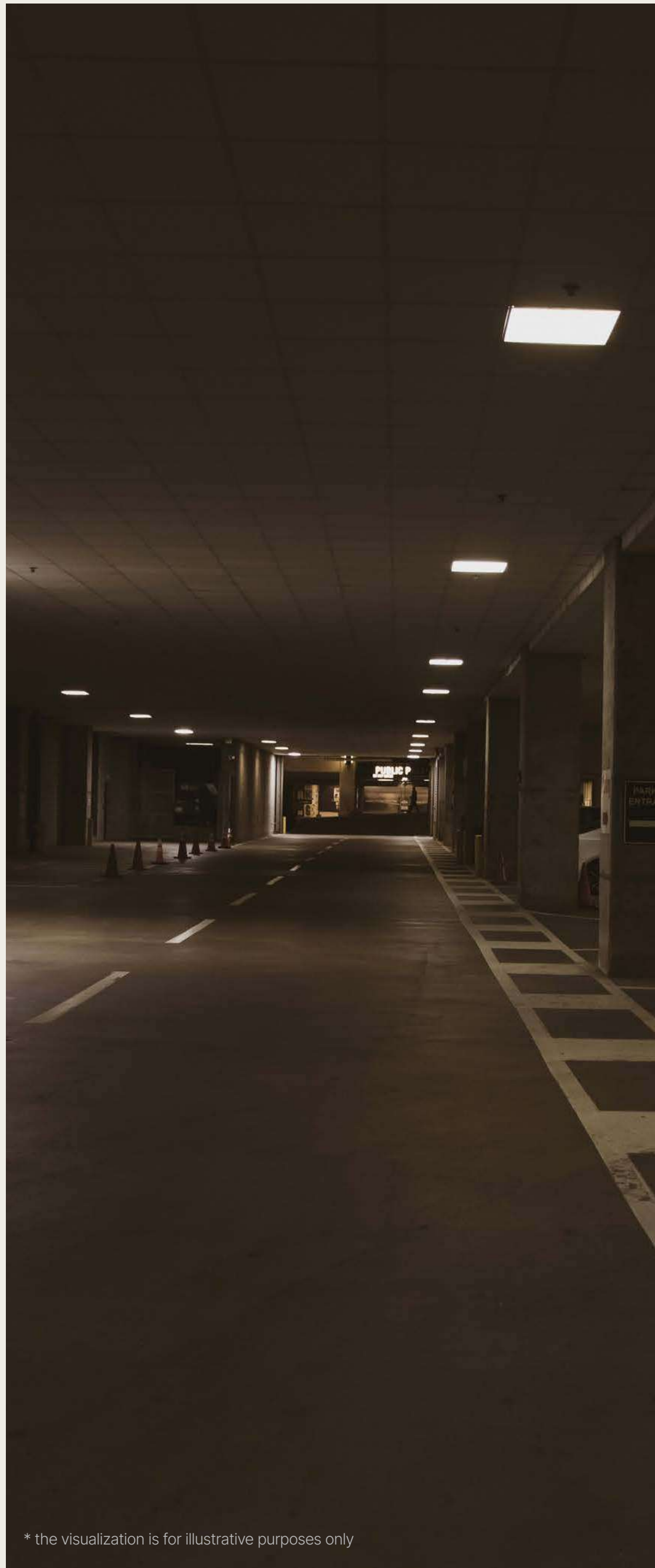
# Block A, *Forth floor , Roof Garden*

\* the visualization is for illustrative purposes only



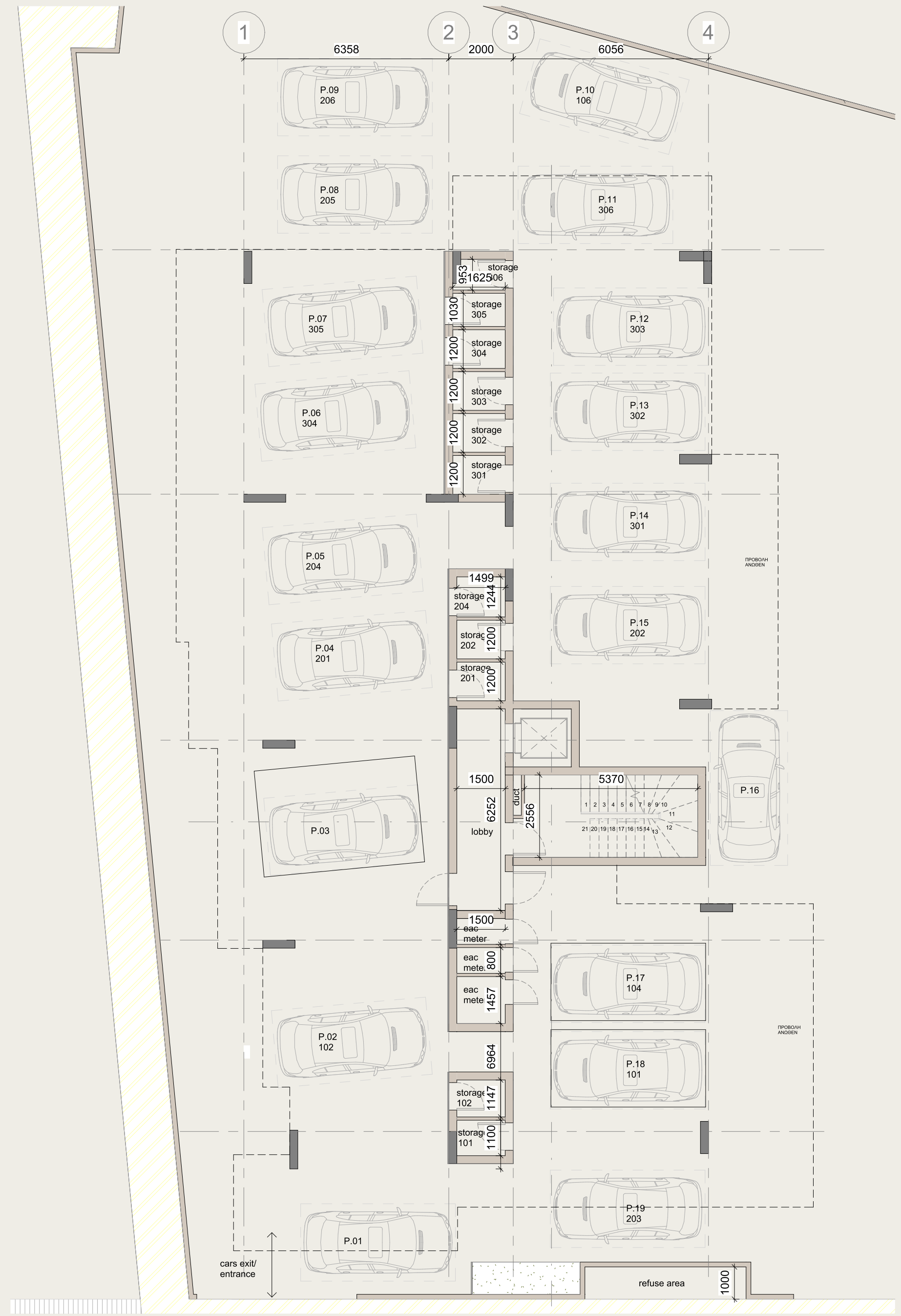
ARK NOAH'S  
DEVELOPMENTS





# Block A, *parking*

\* the visualization is for illustrative purposes only



# Block B, *First floor*

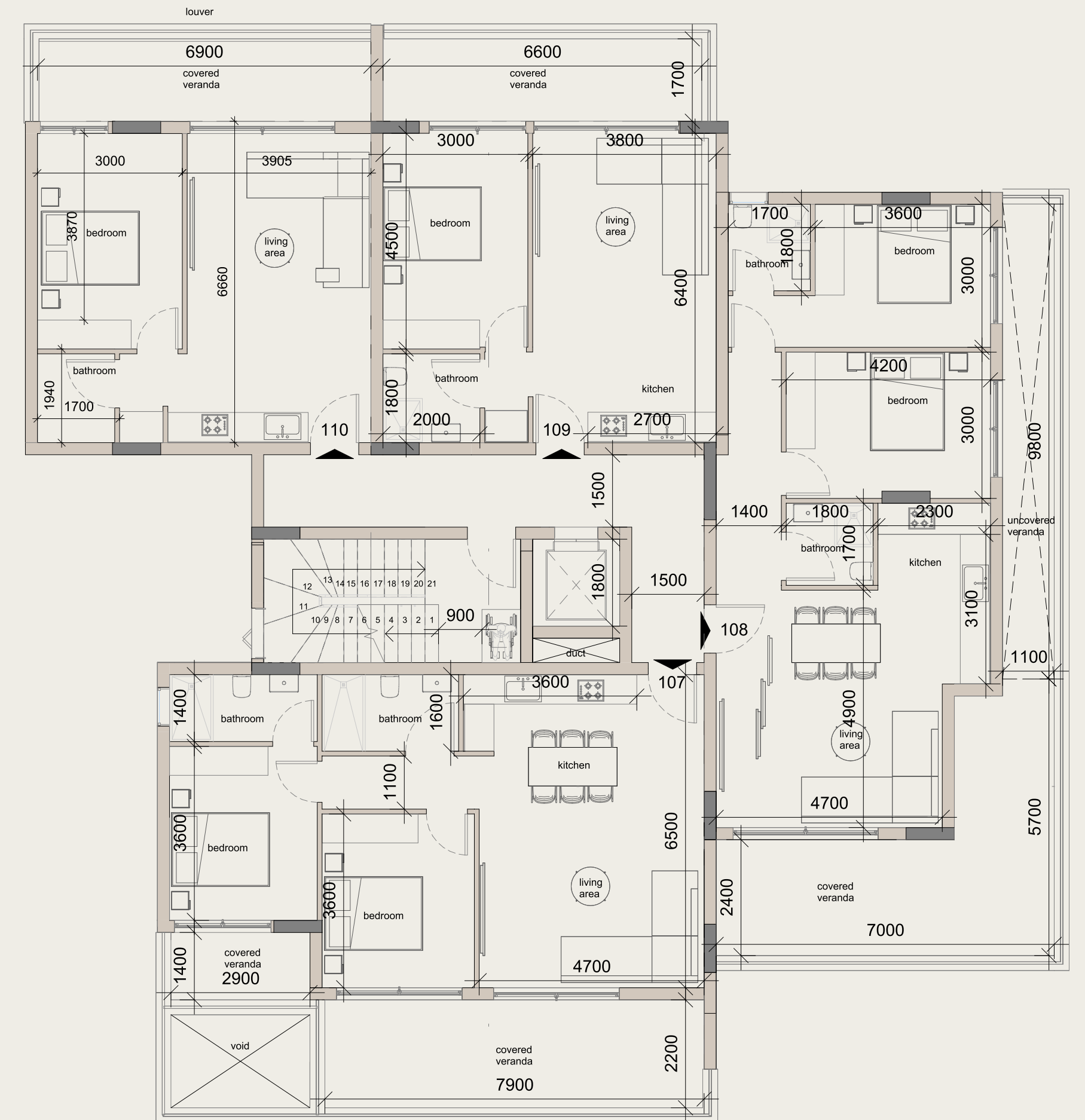


TYPE

1-Bedroom

2-Bedroom

INTERNAL (M <sup>2</sup> )	COVERED VERANDAS (M <sup>2</sup> )	UNCOVERED VERANDAS (M <sup>2</sup> )	TOTAL (M <sup>2</sup> )	FLAT N <sup>o</sup>
50	12	—	62	109
50	12	—	62	110
75	22	—	97	107
78	23	11	112	108



# Block B, *Second floor*

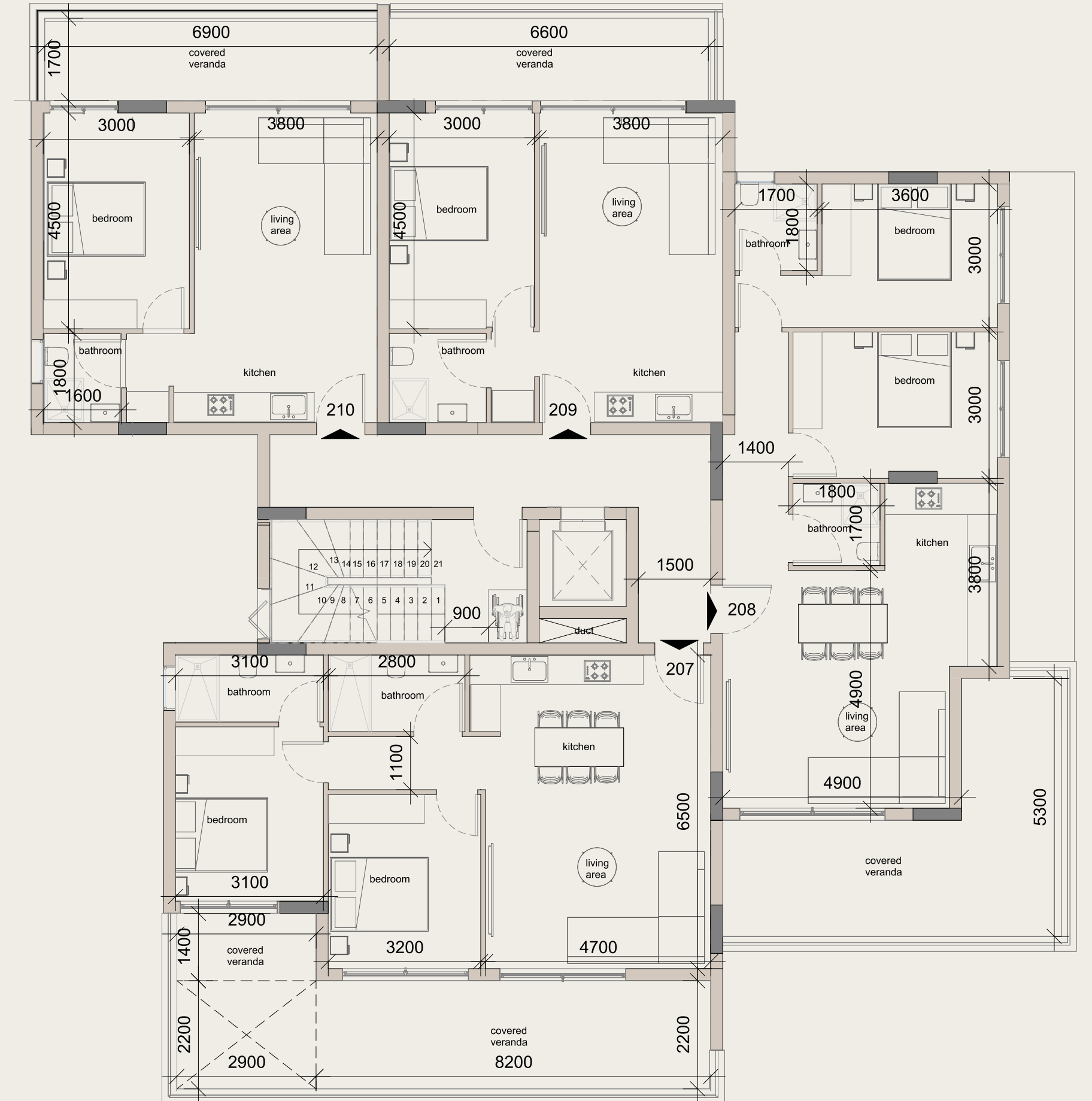


TYPE

1-Bedroom

2-Bedroom

INTERNAL (M <sup>2</sup> )	COVERED VERANDAS (M <sup>2</sup> )	UNCOVERED VERANDAS (M <sup>2</sup> )	TOTAL (M <sup>2</sup> )	FLAT Nº
50	12	—	62	209
50	12	—	62	210
75	23	6	104	207
79	23	—	102	208



# Block B, *Third floor*

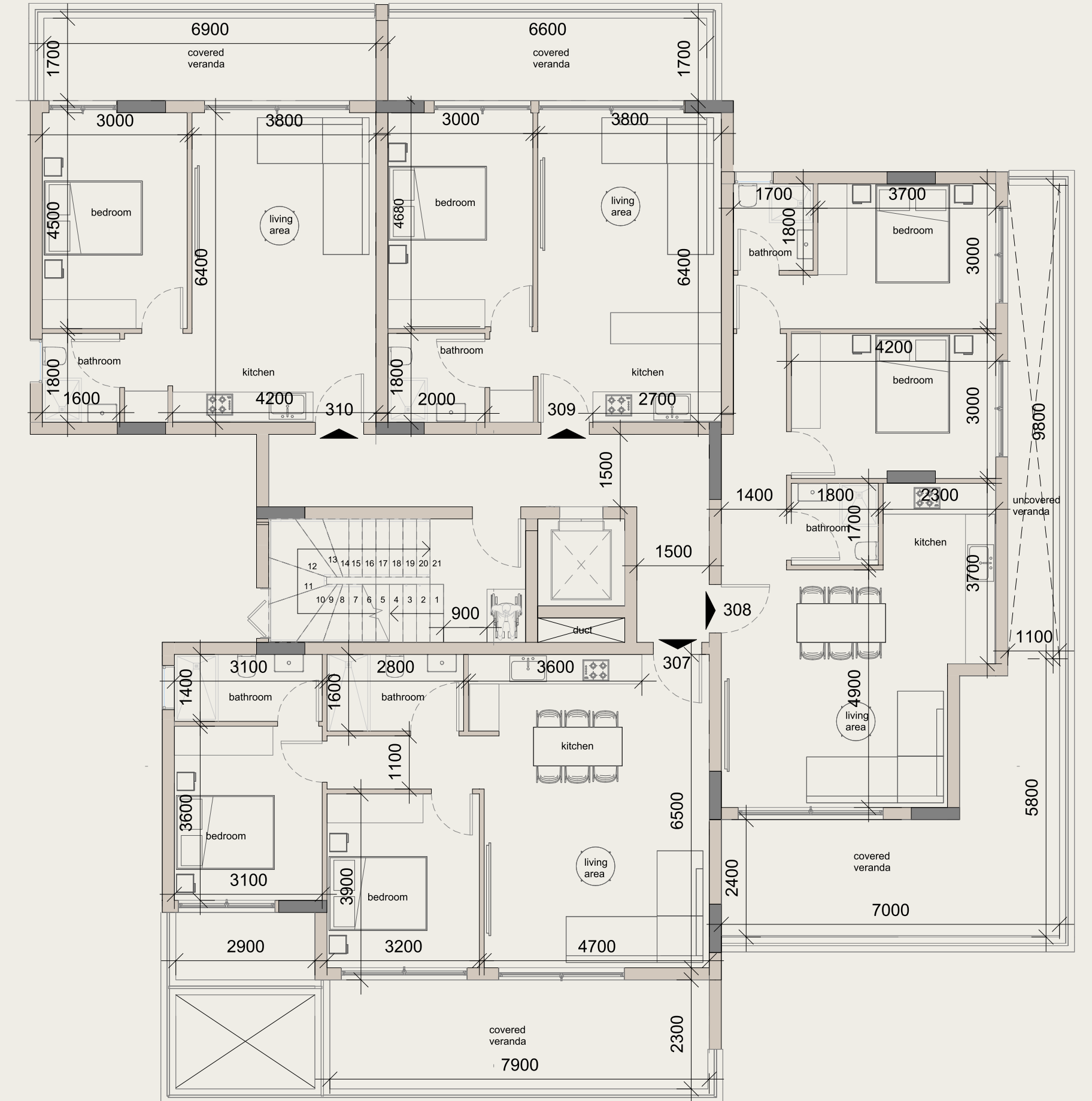


TYPE

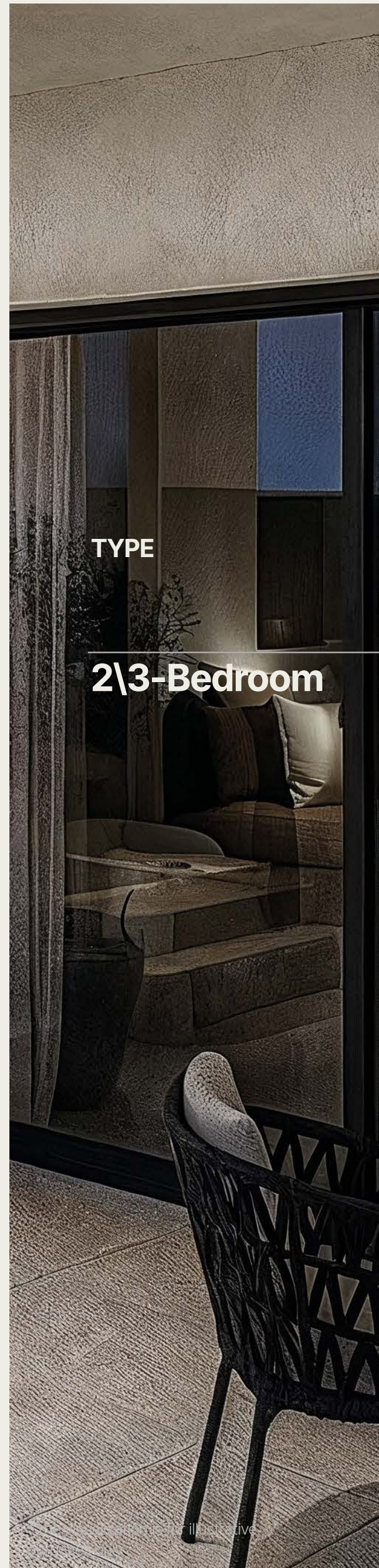
1-Bedroom

2-Bedroom

INTERNAL (M <sup>2</sup> )	COVERED VERANDAS (M <sup>2</sup> )	UNCOVERED VERANDAS (M <sup>2</sup> )	TOTAL (M <sup>2</sup> )	FLAT N <sup>o</sup>
50	12	—	62	309
50	12	—	62	310
75	22	—	97	307
78	24	11	113	308



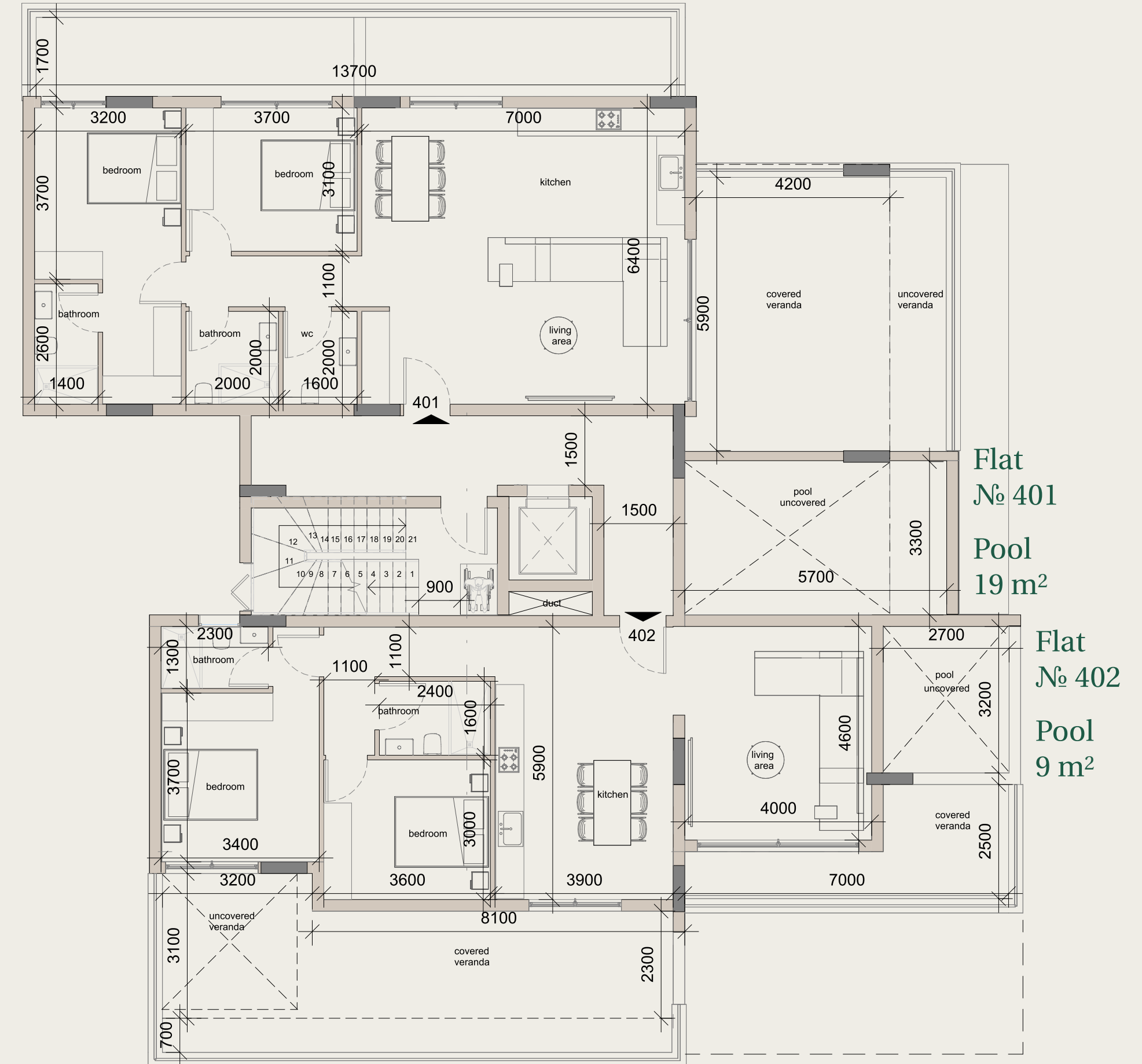
# Block B, *Forth floor*



TYPE

2\3-Bedroom

INTERNAL (M <sup>2</sup> )	COVERED VERANDAS (M <sup>2</sup> )	UNCOVERED VERANDAS (M <sup>2</sup> )	POOL	ROOF GARDEN (M <sup>2</sup> )	TOTAL (M <sup>2</sup> )	FLAT N <sup>o</sup>
101	26	23	19	33	202	PENTHOUSE 401
93	27	18	9	35	182	PENTHOUSE 402



Flat N<sup>o</sup> 401

Pool 19 m<sup>2</sup>

Flat N<sup>o</sup> 402

Pool 9 m<sup>2</sup>



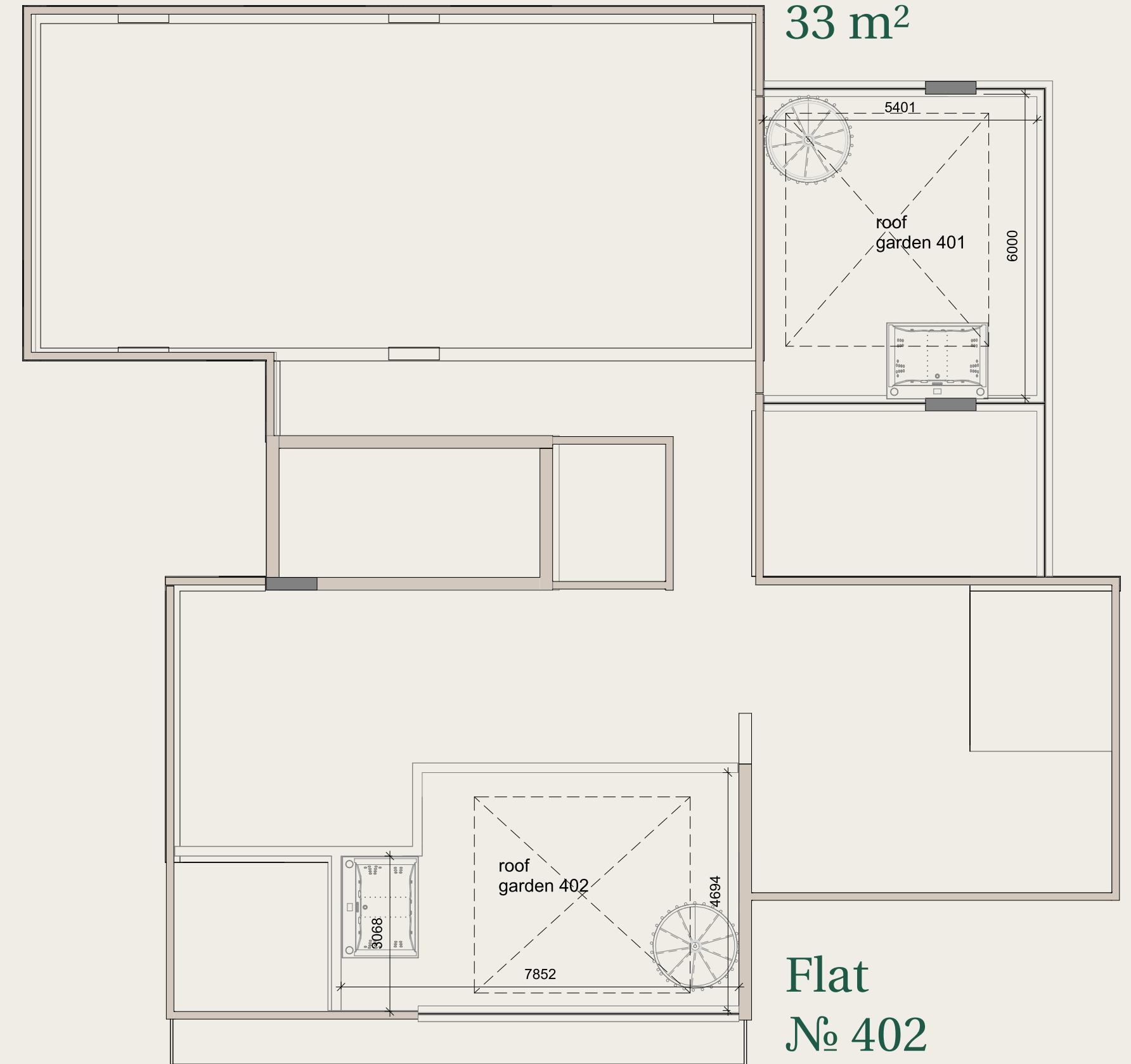
# Block B, *Forth floor , Roof Garden*

\* the visualization is for illustrative purposes only



Flat  
№ 401

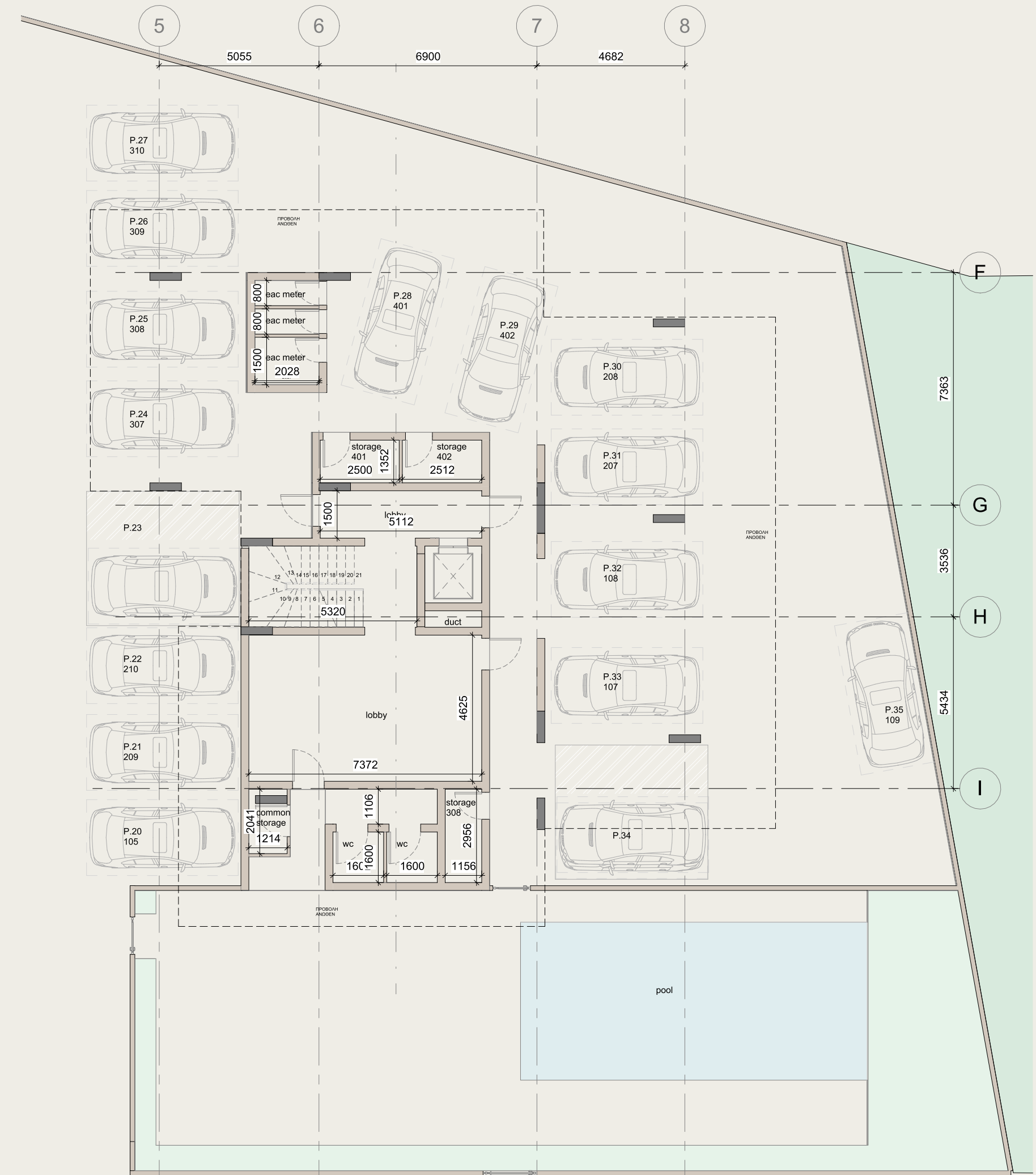
Roof Garden  
33 m<sup>2</sup>



Flat  
№ 402

Roof Garden  
35 m<sup>2</sup>

# Block B, *Outdoor swimming pool and parking*



# A Prime Opportunity in a Thriving District

Located in one of Limassol's most in-demand areas, *experiencing consistent annual price growth*

---



***Rental Yield:***  
***Around 7% per year,***

driven by strong rental demand from professionals, expats, and tourists

---

***Full-Service Support:***

Assistance with purchase, property management, banking, visas

---

***Prime Location:***

Close to MyMall, City of Dreams Casino, and Lady's Mile Beach

---

# Celistra

Your Private Retreat  
in the Heart of  
*Limassol's New Horizon*



E-mail: [office@noaharkholdings.com](mailto:office@noaharkholdings.com)

Phone: +357 777 88 758

Whatsapp: +357 967 07 711

[noaharkholdings.com](http://noaharkholdings.com)

 [noahs\\_ark\\_developments](https://www.instagram.com/noahs_ark_developments)

Andrea Themistokleous 12 Limassol 3041