

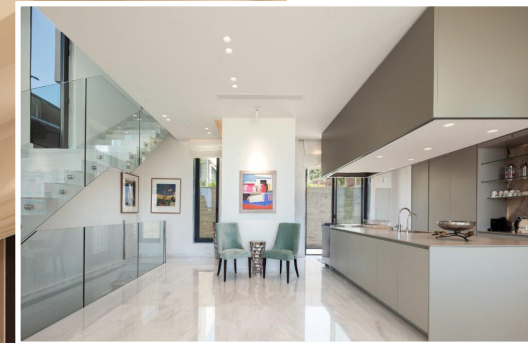


We have equipped the project with a wealth of state-of-the-art amenities to create and build irresistible and bespoke exterior and interior spaces that effortlessly combine style, luxury and functionality.



LUXURY LIVING





proximity map

perfectly placed

- 10km AKAMAS PENINSULA
- 16km LARA TURTLE BAY
- 12km AYAKAS GORGE

Paphos Zoo

CORAL BAY



9.5km



Adonis Baths

7km

4km

25km

10km

2.5km



Minitoofball
Picos Club



Golf Clubs



Paphos
Golf Club

6km



TOMBS OF
THE KINGS



PAPHOS
MIEVIAL CASTLE



HARBOUR



ARCHAEOLOGICAL PARK

8km

PAPHOS
WATERPARK

10km

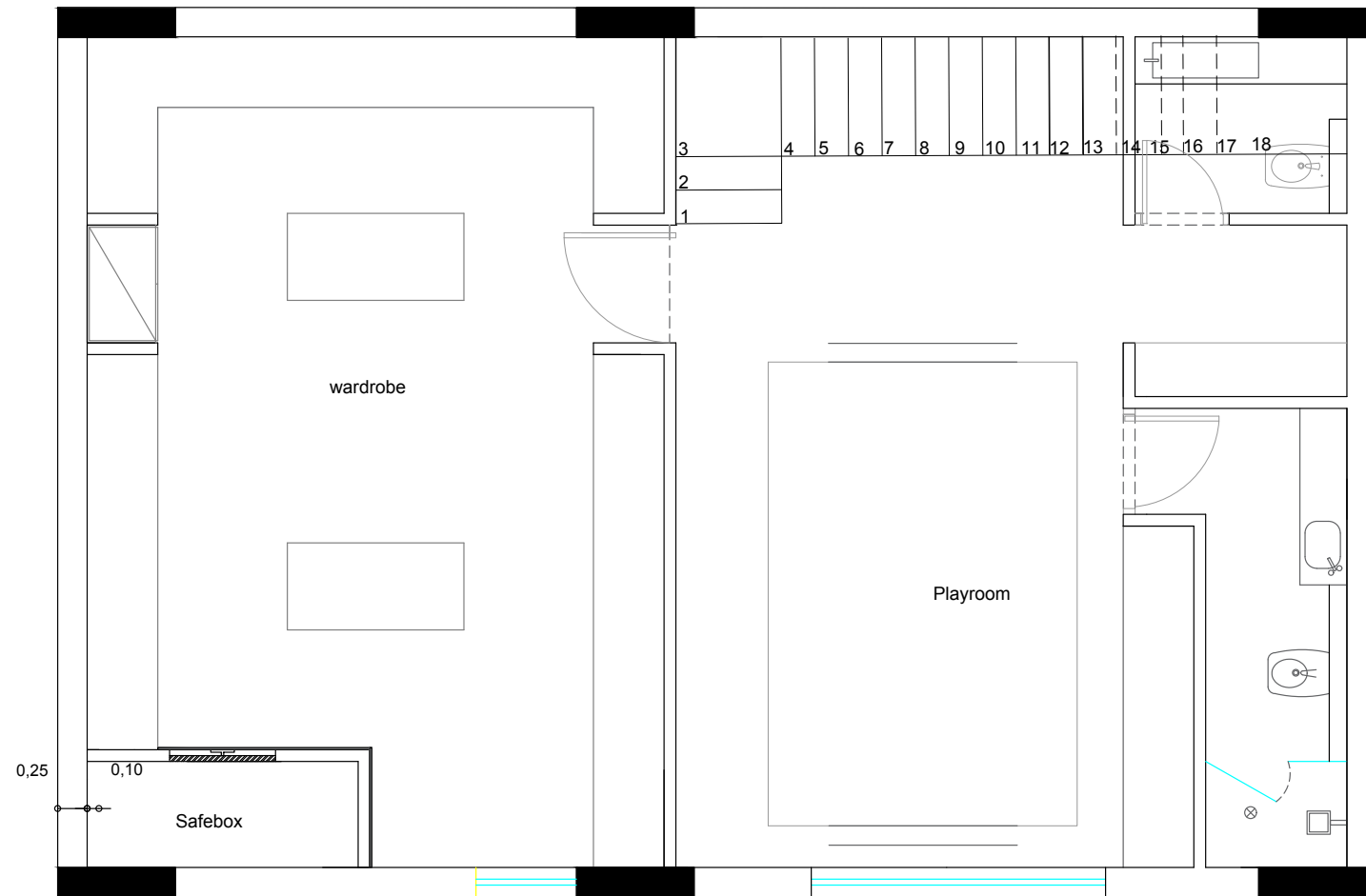
A
Higher
Quality
of Living.



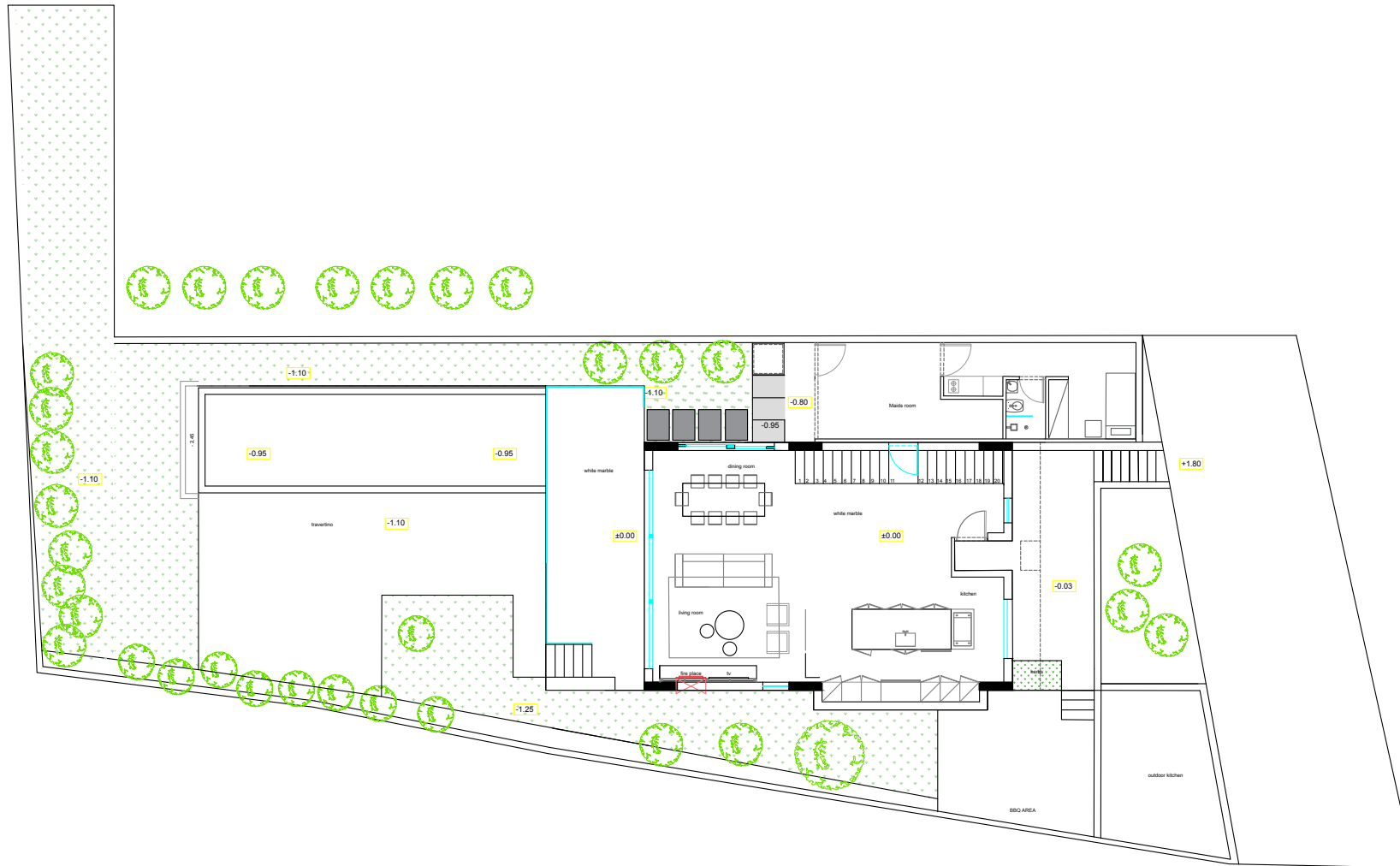
The residence co-exists with the splendor of their natural surroundings offering privacy and a spacious open-air feel.



the
Plans



Floor
Lower



Floor
Ground



PRICE
€ 1.700.000

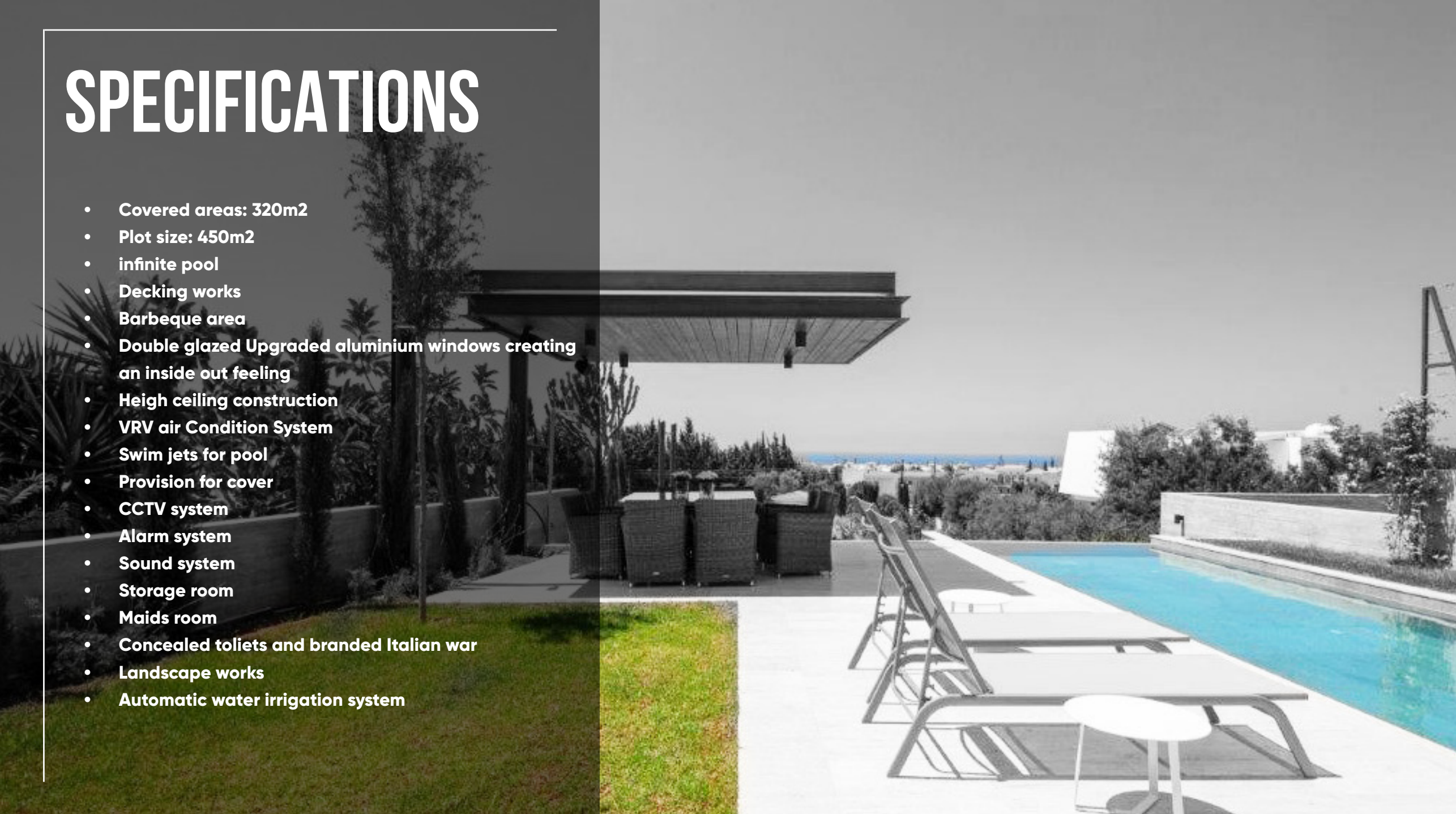
TOTAL COVERED AREAS
320m²

PLOT SIZE
450m²

3 BEDROOMS ALL WITH EN-SUITE
EXTRA BATHROOM AND WC

SPECIFICATIONS

- Covered areas: 320m²
- Plot size: 450m²
- infinite pool
- Decking works
- Barbeque area
- Double glazed Upgraded aluminium windows creating an inside out feeling
- High ceiling construction
- VRV air Condition System
- Swim jets for pool
- Provision for cover
- CCTV system
- Alarm system
- Sound system
- Storage room
- Maids room
- Concealed toilets and branded Italian ware
- Landscape works
- Automatic water irrigation system









THANK YOU