

Peyia Panorama

Description

Peyia Panorama is a one-of-a-kind development located in the picturesque municipality of Peyia, Paphos, designed to offer uninterrupted, panoramic views of the Mediterranean Sea. This charming project features five meticulously crafted 3-bedroom villas, combining modern comfort with timeless elegance.











Each villa boasts its own private swimming pool, inviting gardens, and spacious outdoor areas, perfect for both relaxation and entertaining. There's also an optional BBQ area to enhance your outdoor living experience. With secure private parking and stunning sea views, Peyia Panorama offers a tranquil lifestyle in a beautiful coastal setting, where every day feels refreshingly peaceful.



The 3D images provided are samples and do not represent the final result of the project.



Amenities

- | | | | |
|---|------------------------------|---|---------------------------|
|  | Beach
3.6 km |  | Restaurant
1 km |
|  | Education
1.4 km |  | Hotels
3.3 km |
|  | Supermarket
1.2 km |  | Pharmacy
1 km |
|  | Medical Care
950 m |  | ATM
3.9 km |
|  | Airport
31 km |  | Kiosk
1.6 km |



Plot 1 - Type D
498 m2

Plot 2 - Type C
346.13 m2

Plot 3 - Type I
306.17 m2

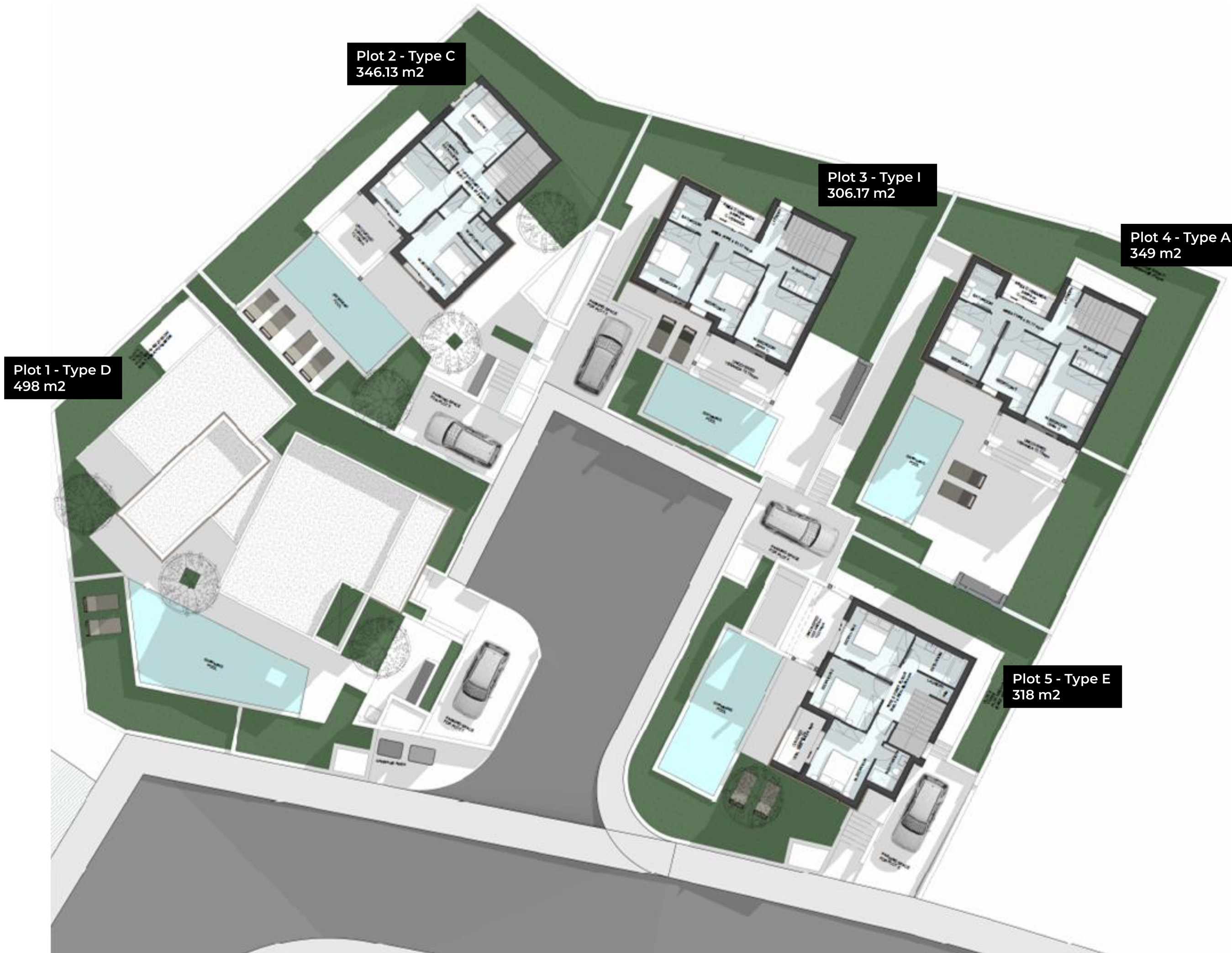
Plot 4 - Type A
349 m2

Plot 5 - Type E
318 m2



Master Plan

Ground Floor



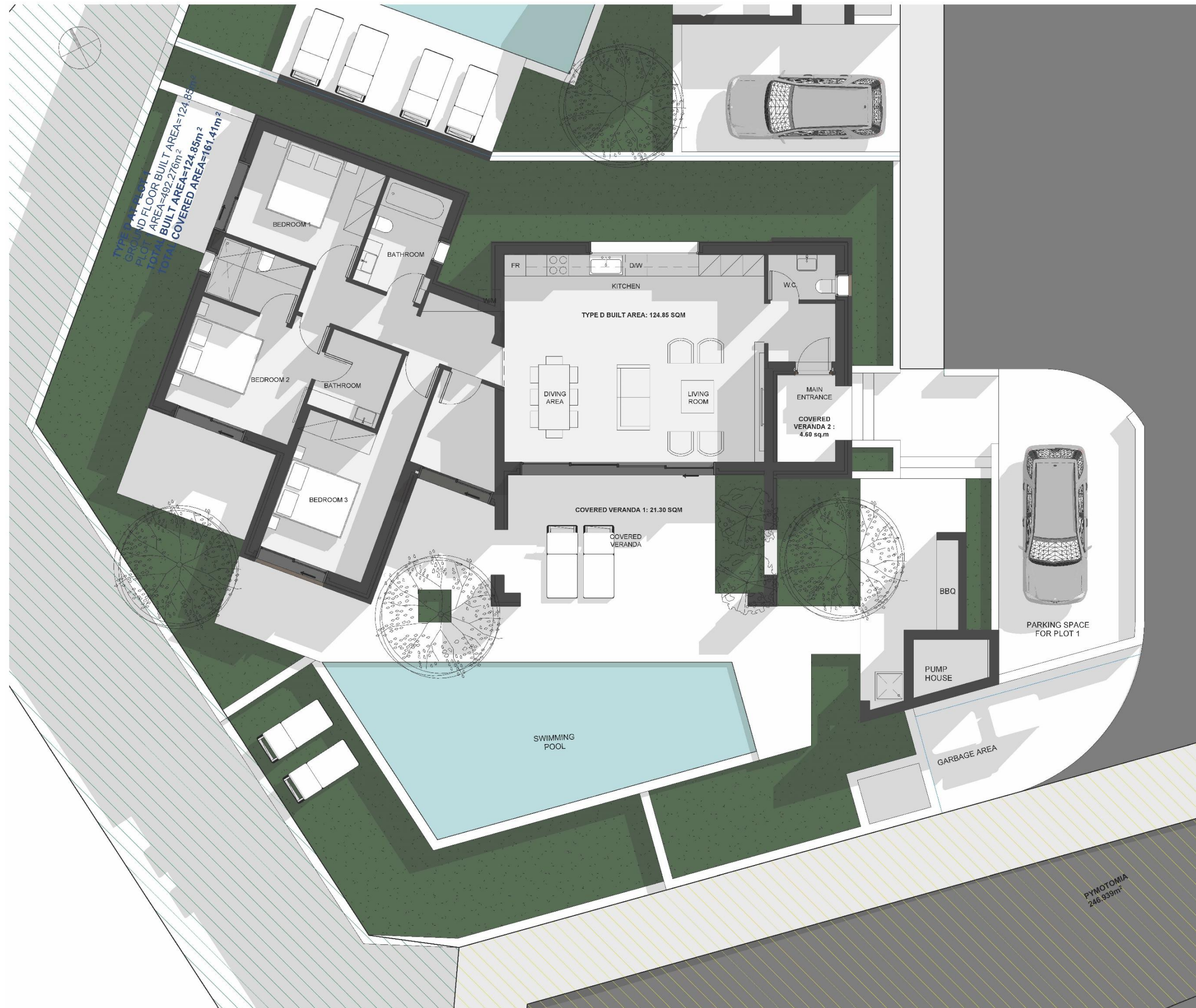
Master Plan

First Floor

Specifications – Plot 1

Plot Area	498 m ²
Total Built Area	155.43 m ²
Covered Internal Area	129.43 m ²
Covered Veranda	26 m ²
Swimming Pool	Yes
Parking Space	1
Bedrooms	3
Bathroom	2
Guest W/C	1



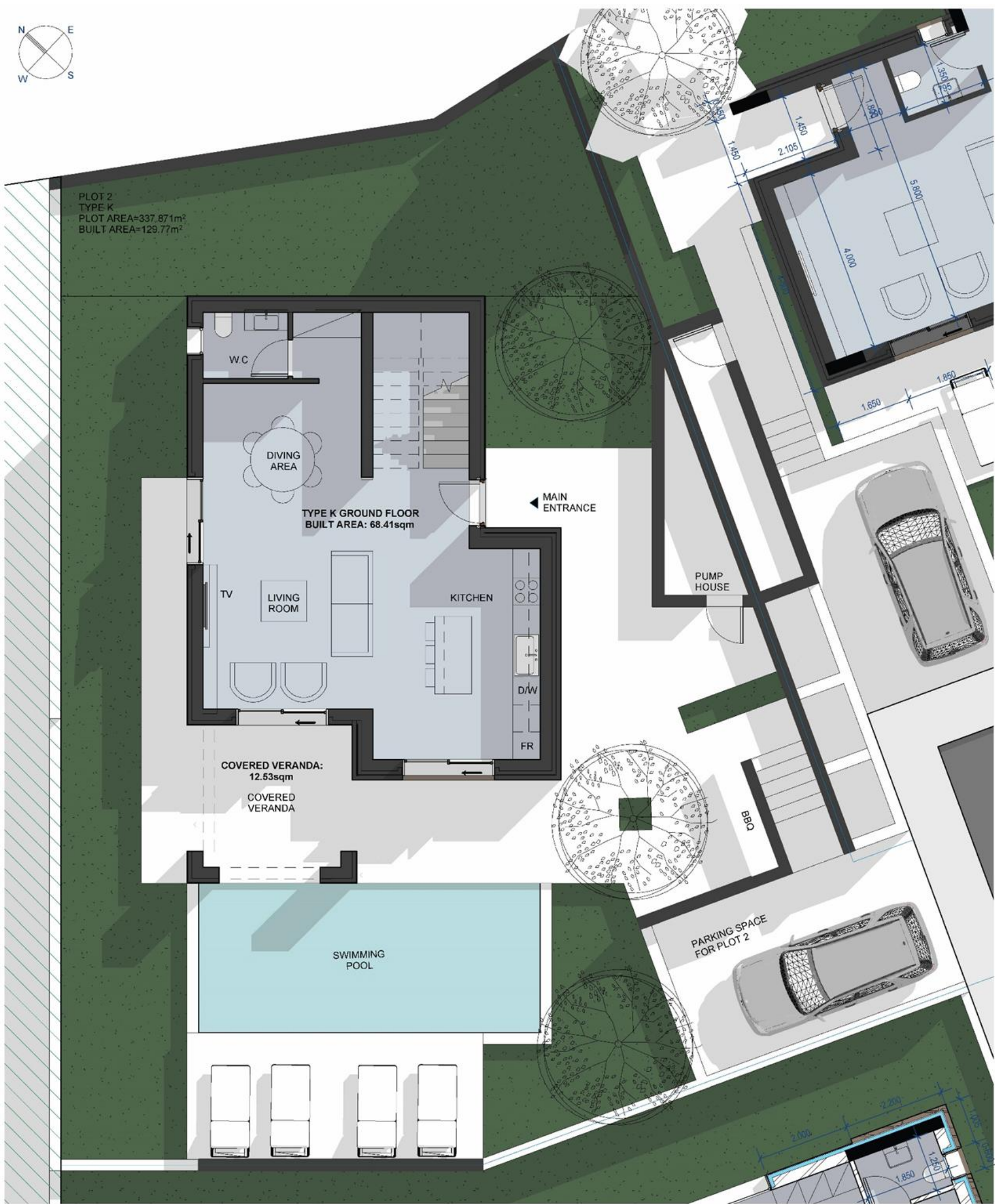


Plot 1

Specifications – Plot 2

Plot Area	346.13 m ²
Total Built Area	154.80 m ²
Covered Internal Area	129.42 m ²
Covered Veranda	12.61 m ²
Uncovered Veranda	12.77 m ²
Swimming Pool	Yes
Parking Space	1
Bedrooms	3
Bathroom	2
Guest W/C	1





Plot 2

Ground Floor

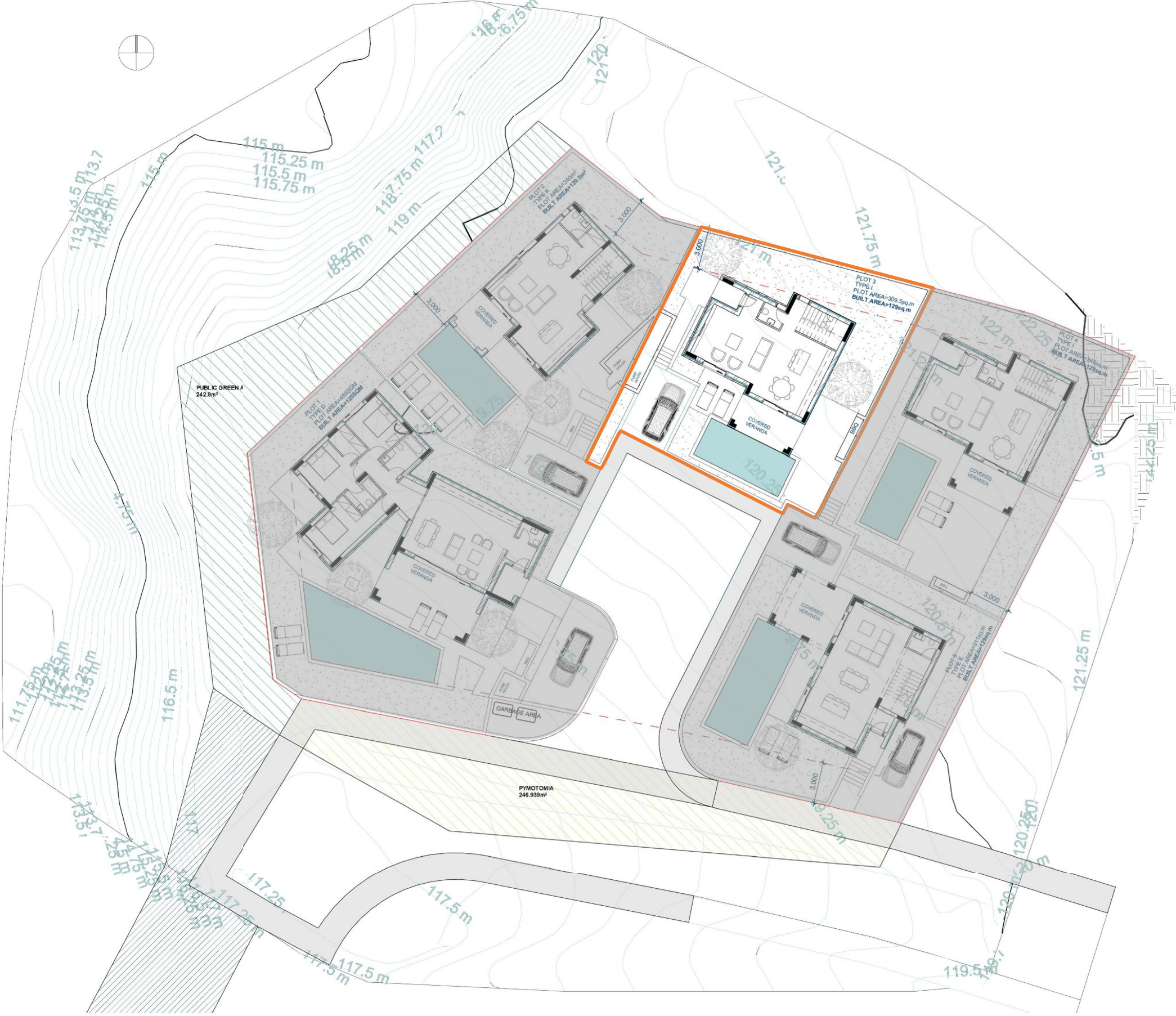


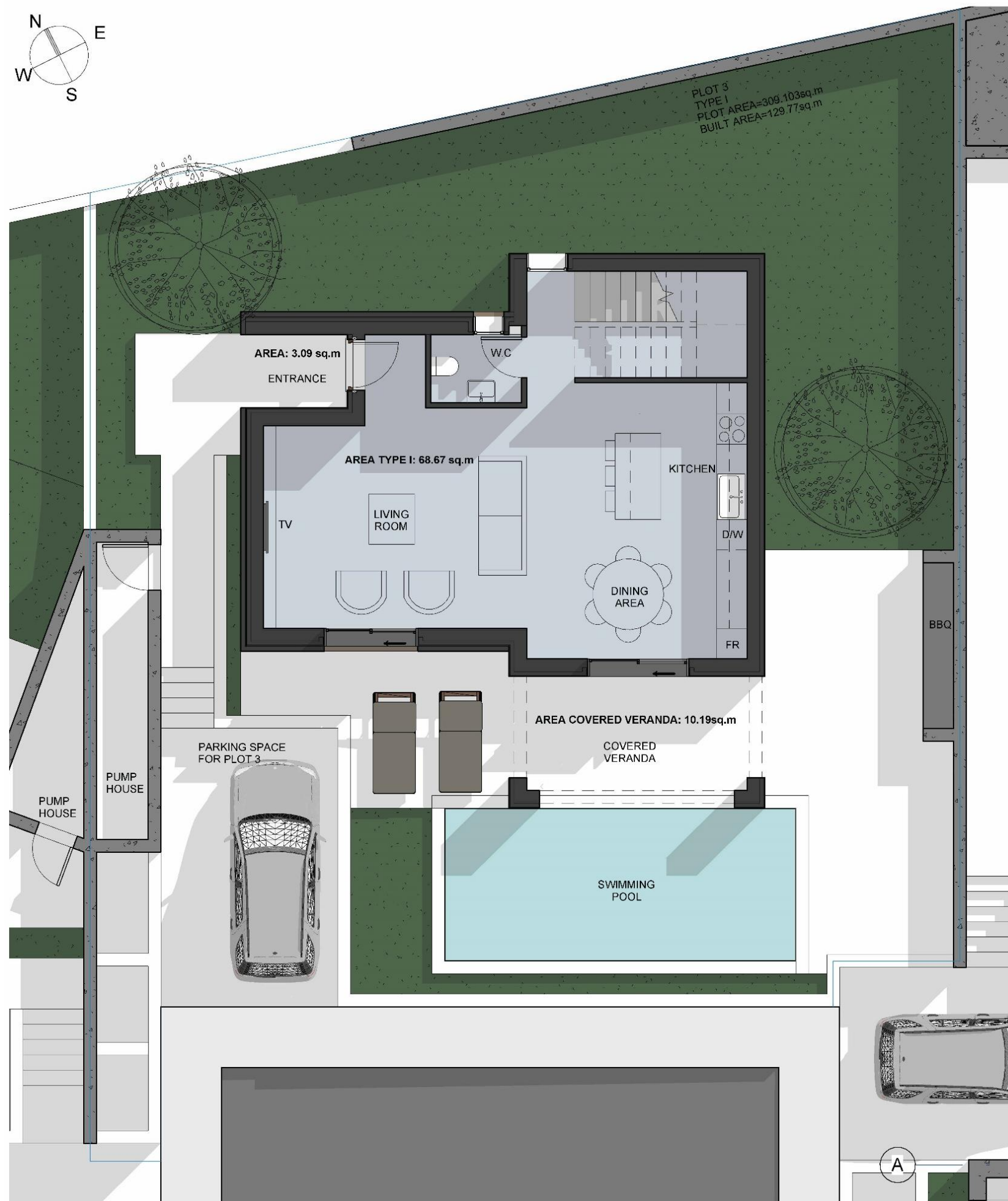
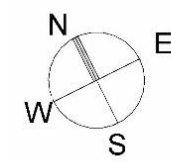
Plot 2

First Floor

Specifications – Plot 3

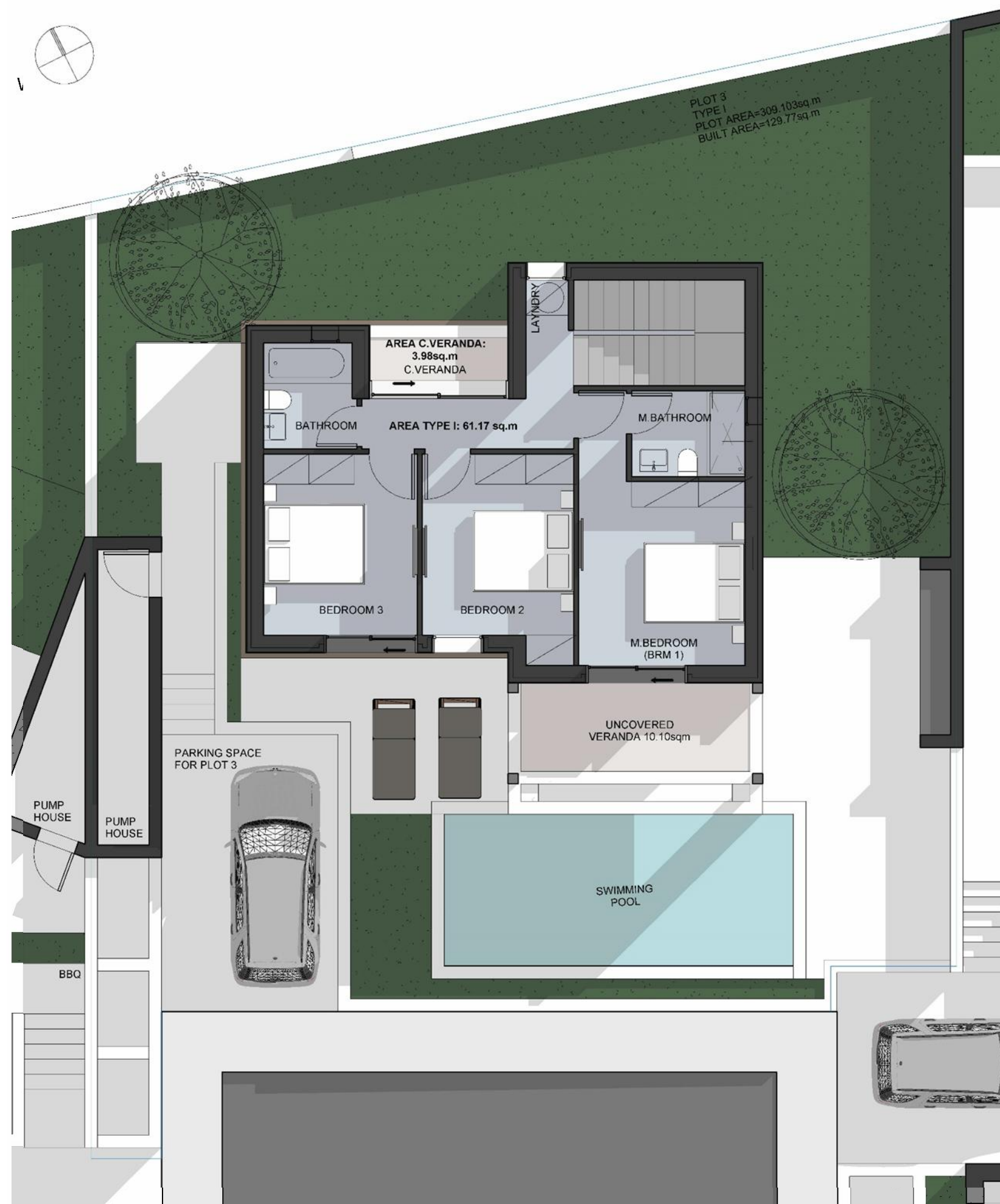
Plot Area	306.17 m ²
Total Built Area	153.80 m ²
Covered Internal Area	129.53 m ²
Covered Veranda	14.17 m ²
Uncovered Veranda	10.10 m ²
Swimming Pool	Yes
Parking Space	1
Bedrooms	3
Bathroom	2
Guest W/C	1





Plot 3

Ground Floor



Plot 3

First Floor

Specifications – Plot 4

Plot Area	349 m ²
Total Built Area	153.80 m ²
Covered Internal Area	129.53 m ²
Covered Veranda	14.17 m ²
Uncovered Veranda	10.10 m ²
Swimming Pool	Yes
Parking Space	1
Bedrooms	3
Bathroom	2
Guest W/C	1





Plot 4

Ground Floor



Plot 4

First Floor

Specifications – Plot 5

Plot Area	318 m ²
Total Built Area	147.60 m ²
Covered Internal Area	129.60 m ²
Covered Veranda	7.76 m ²
Uncovered Veranda	10.24 m ²
Swimming Pool	Yes
Parking Space	1
Bedrooms	3
Bathroom	2
Guest W/C	1





Plot 5

Ground Floor



Plot 5

First Floor



3D Views Plot 1

The 3D images provided are samples and do not represent the final result of the project.



3D Views Plot 2

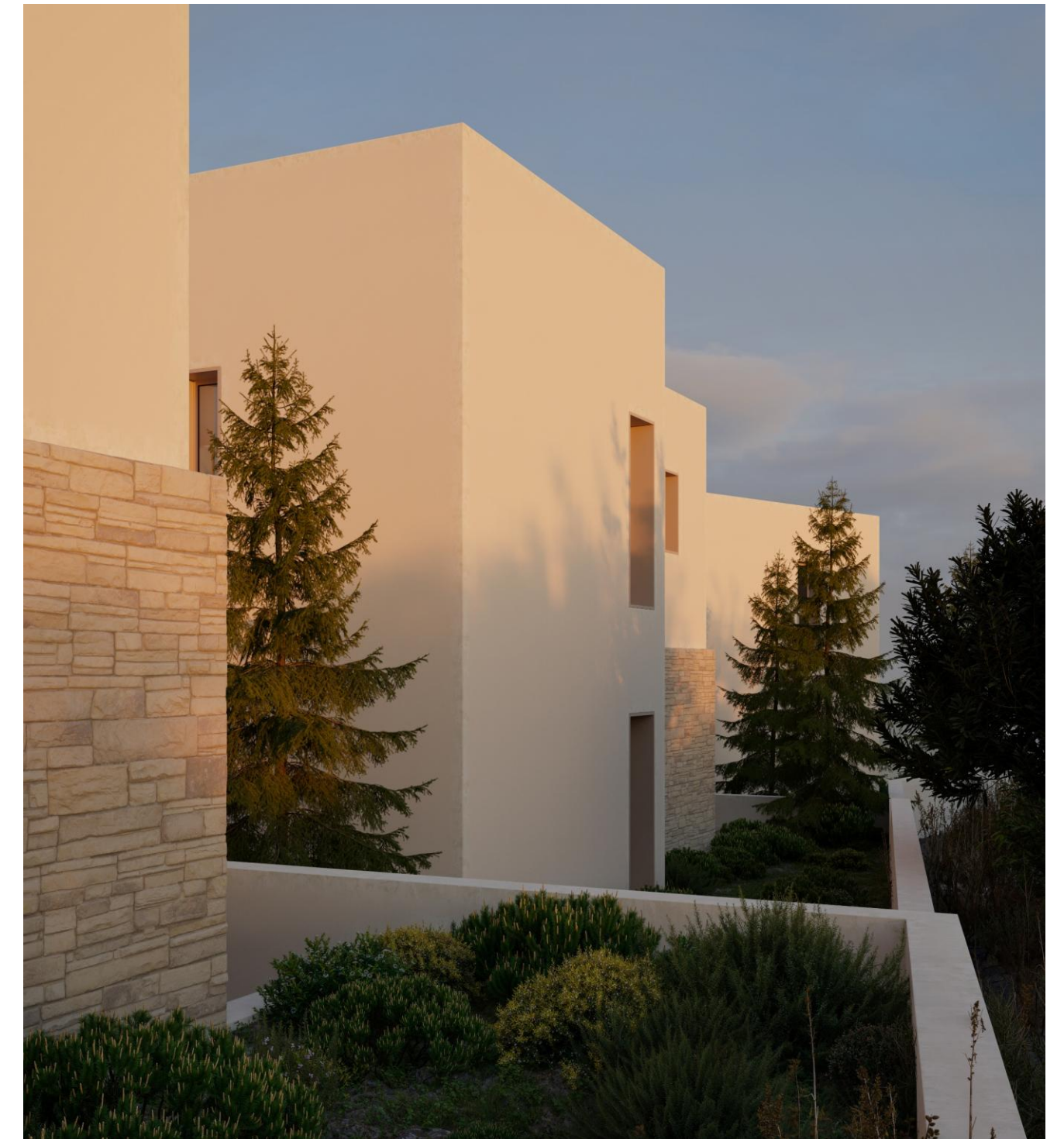
The 3D images provided are samples and do not represent the final result of the project.



3D Views Plot 3

The 3D images provided are samples and do not represent the final result of the project.

3D Views | Exterior – Plot 3



The 3D images provided are samples and do not represent the final result of the project.



3D Views Plot 4

The 3D images provided are samples and do not represent the final result of the project.



3D Views Plot 5

The 3D images provided are samples and do not represent the final result of the project.



3D Views Plot 3 & 5

The 3D images provided are samples and do not represent the final result of the project.