



INFINITY
RESIDENCES



We Listen. We Guide. We Build.



THE PROJECT

INFINITY is an exclusive development offering a selection of 20 luxury detached villas in the peaceful and picturesque town of Peyia. These villas are designed to provide a sophisticated and serene living experience with modern features and high-end finishes.

Each villa at INFINITY comes with 3, 4, or 5 bedrooms and features a private pool, underfloor heating, and a state-of-the-art VRF system for year-round comfort. The villas are also designed to offer stunning panoramic views of the Mediterranean Sea, creating a perfect blend of luxury and natural beauty. The modern design is complemented by high-quality finishes throughout, ensuring a comfortable and elegant living environment.

INFINITY incorporates sustainable building practices, including photovoltaic provisions and an energy efficiency rating of A, ensuring both environmental responsibility and long-term savings.

Peyia is a charming town that offers a unique mix of history, natural beauty, and modern conveniences. Despite its peaceful setting, Peyia is close to essential amenities such as shops, supermarkets, restaurants, and cafes, making it an ideal place for those who want to live in a calm, natural setting without sacrificing modern comforts.

Just a short drive away, Coral Bay offers a lively atmosphere with its crystal-clear waters, sandy beaches, and a variety of activities such as swimming and water sports.

Additionally, the stunning Akamas Peninsula, with its untouched beauty and natural landscapes, is just a short drive away, offers the perfect opportunity to spend time in nature, exploring its rugged trails, unique flora, and breathtaking vistas.

INFINITY offers a perfect balance of luxury, convenience, and natural beauty, making it an ideal choice for those looking for an exceptional lifestyle.

ABOUT PAFOS

The town of Paphos, located at the western end of the island, is considered the jewel of Cyprus. The mild climate, vibrant atmosphere, the variety seen in the landscape, and the historic sites that define the region, form the irresistible attraction of Pafos. The city of Pafos has a remarkable history which can be traced back 2300 years. Throughout the centuries, the city has built a spectacular cultural heritage and has played a significant part in the development and history of Cyprus. In ancient times it was the capital of Cyprus for 600 years and its archaeological legacy is such that UNESCO has the whole town on its World Cultural Heritage list and, in recognition of this, Pafos was awarded the European Capital of Culture 2017.



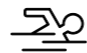




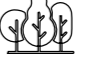


INFINITY area

Located on the hills overlooking the Mediterranean Sea, Peyia is one of the most charming and sought-after villages in the Paphos region. Known for its traditional character, vibrant community, and stunning coastal views, Peyia effortlessly blends authentic Cypriot charm with modern conveniences. The village offers a selection of tavernas, cafes, and shops, while its close proximity to Coral Bay and beautiful beaches makes it an ideal location for both permanent living and luxurious holiday retreats.

Just a short drive from Peyia lies the breathtaking Akamas Peninsula, a protected natural reserve renowned for its untouched beauty and ecological significance. Rich in biodiversity, Akamas boasts dramatic landscapes of rugged cliffs, secluded coves, and dense forests, offering endless opportunities for hiking, boating, and exploring. This unique area remains one of Cyprus's most treasured natural sanctuaries, offering a rare sense of tranquility and connection to nature.

KEY DISTANCES

- | | | | |
|---|-------------------------|---|-------------------------------|
|  | CORAL BAY
3.2km |  | PAFOS ZOO
3km |
|  | BEACH
3.2km |  | PAFOS HARBOR
14.5km |
|  | PRIVATE SCHOOL
2.5km |  | INTERNATIONAL AIRPORT
21km |
|  | SUPERMARKET
750m |  | AKAMAS NATIONAL PARK
4km |

SITE PLAN



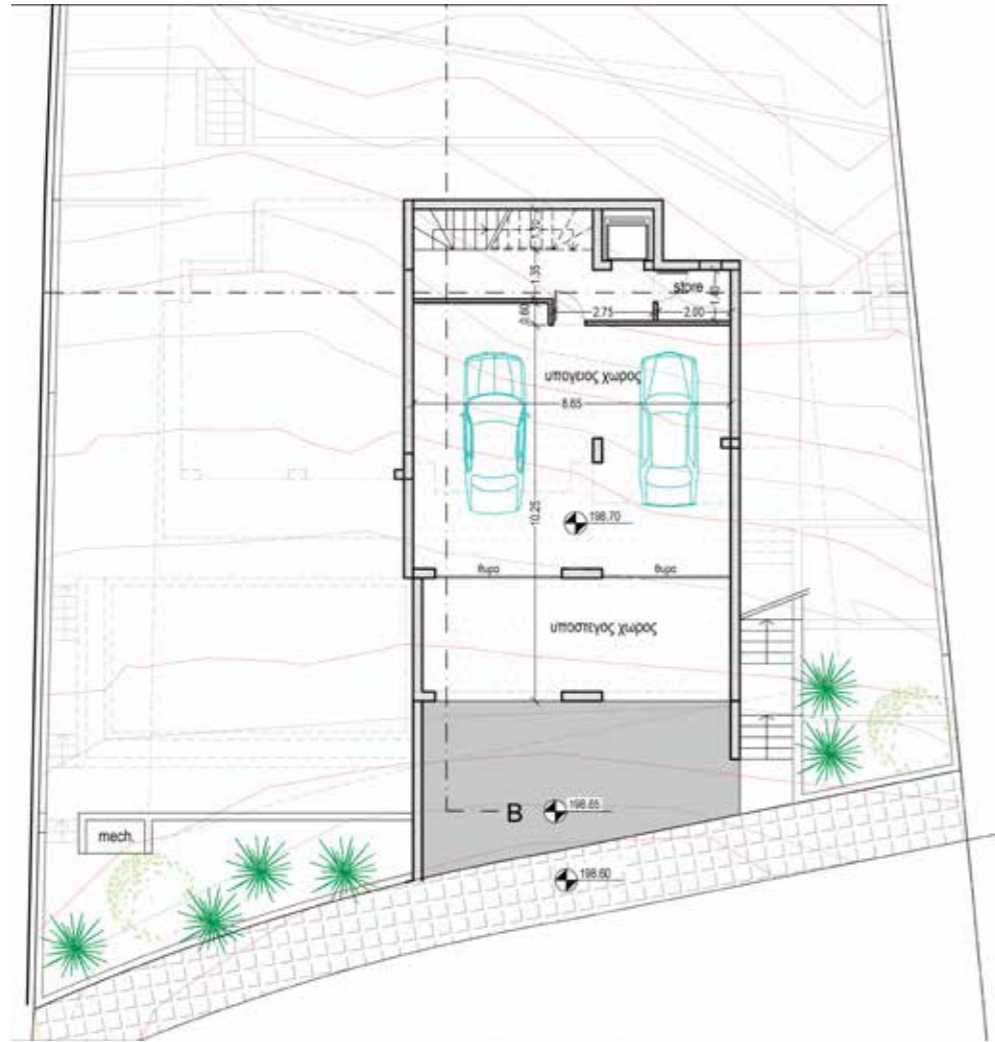
- Private parking & pool
- 3-5 bathrooms
- BBQ area (optional)
- Custom-made kitchen
- Thermal aluminium windows
- Panoramic Sea-View
- Customizable interiors
- Construction standard with class A energy efficiency
- High-quality fittings and flooring
- Energy-efficient VRF cooling & heating
- Underfloor heating for added luxury and comfort



SPECIAL FEATURES

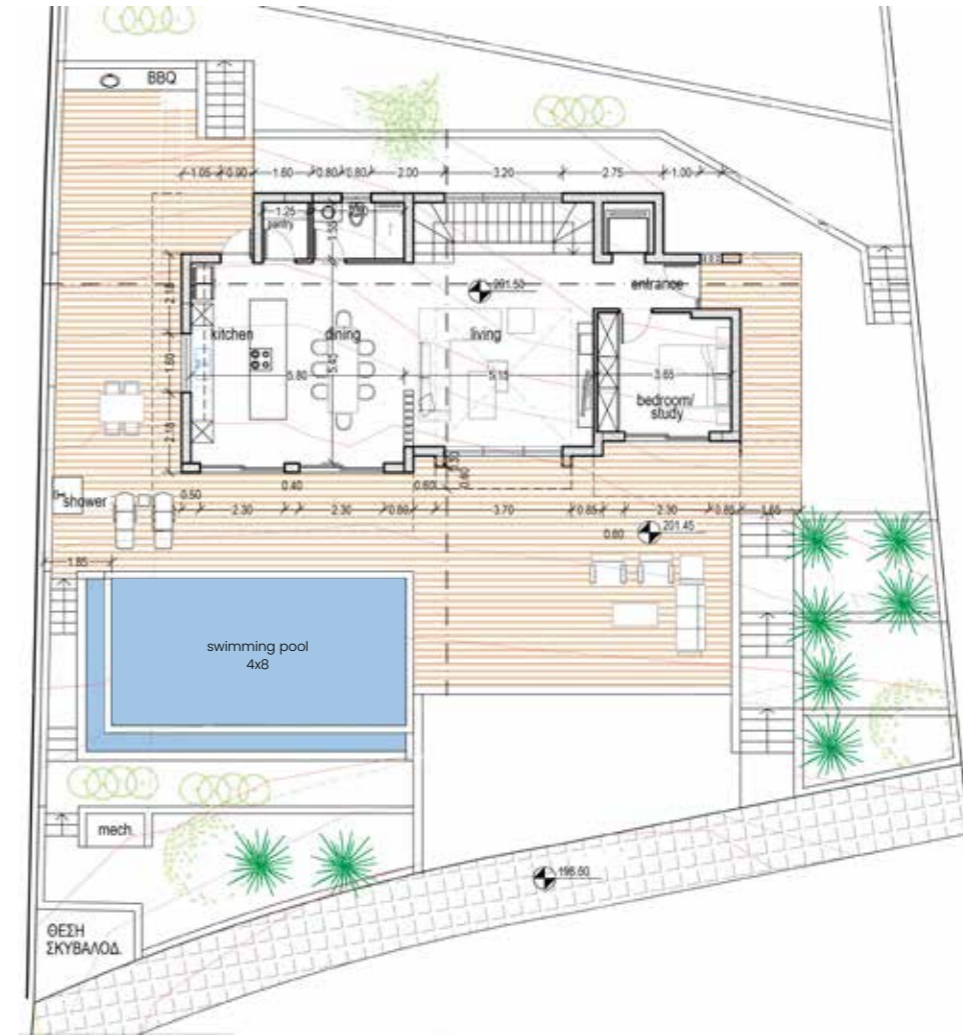


PLOT 1 Basement plan



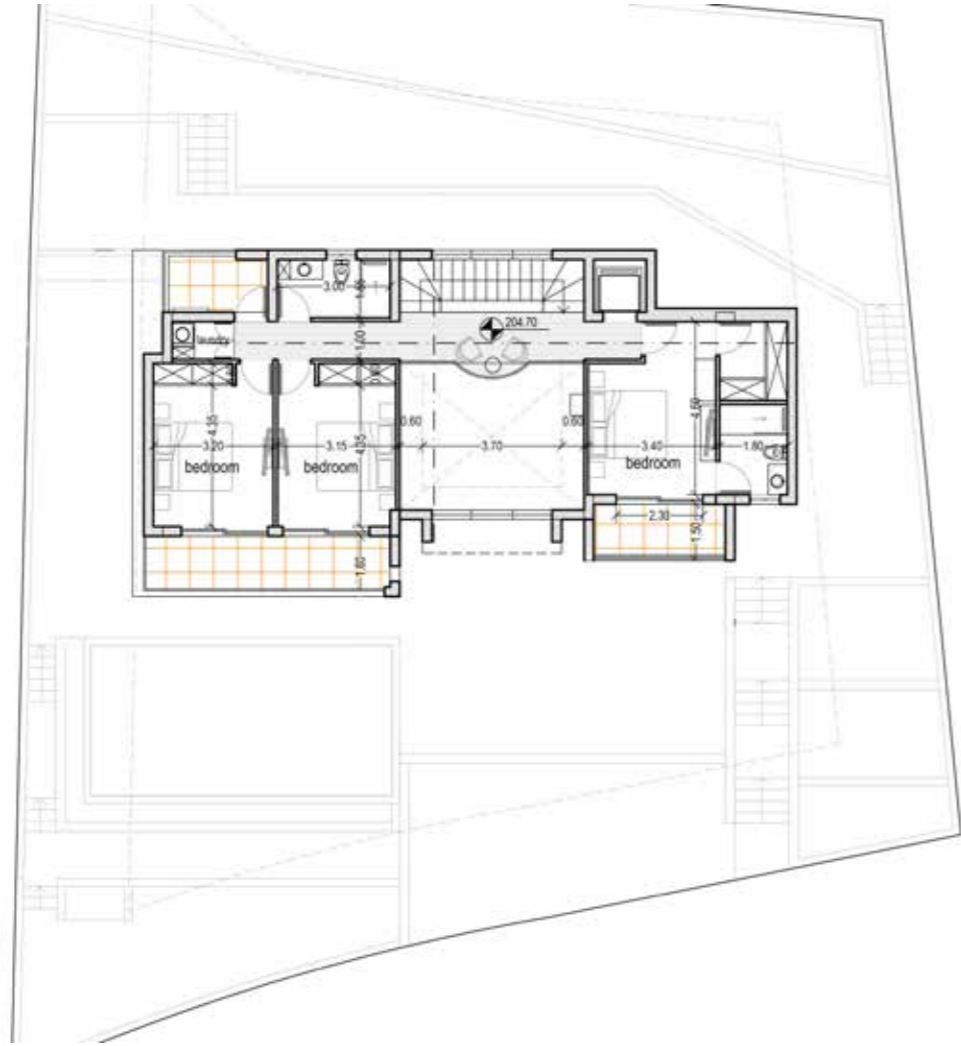
Ground Floor plan

Villa Plot 1
Internal Area = 215m²
Covered Veranda = 39m²
Basement = 120m²
Plot size = 626m²



Luxury Villa
4 bedrooms
Swimming pool
Private parking
Storage rooms
Peyia, Paphos - Cy

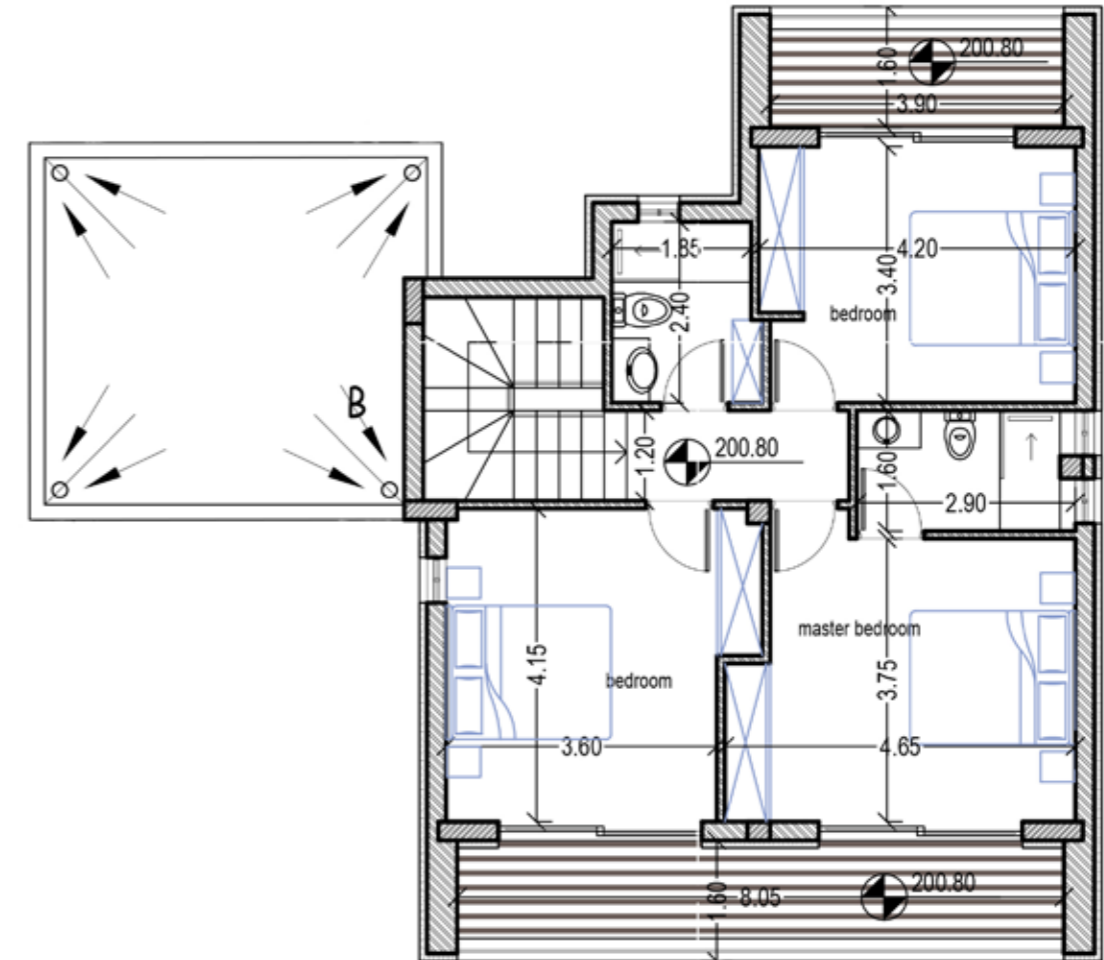
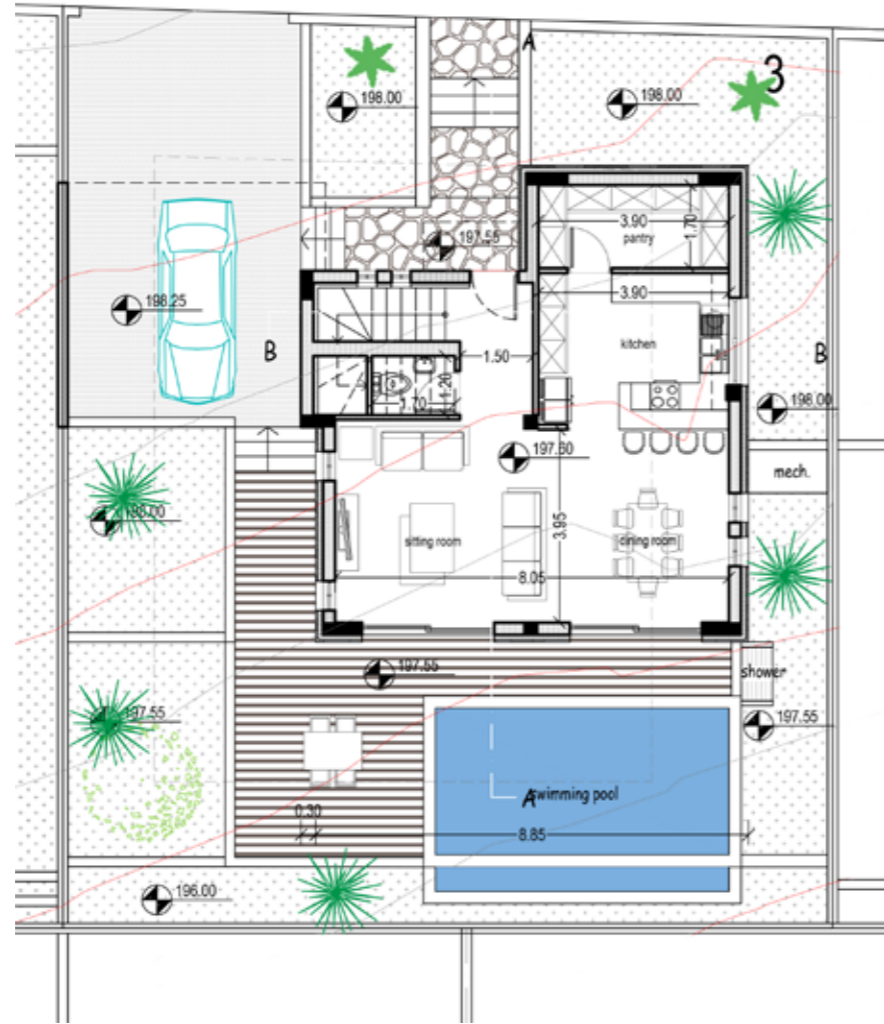
First Floor plan



PLOT 3 Ground Floor plan

Villa Plot 3
Internal Area = 147.29m²
Covered Veranda = 33.63m²
Plot size = 293m²

First Floor plan



- Luxury Villa
- 3 bedrooms
- Swimming pool
- Private parking
- Storage rooms
- Peyia, Paphos - Cy

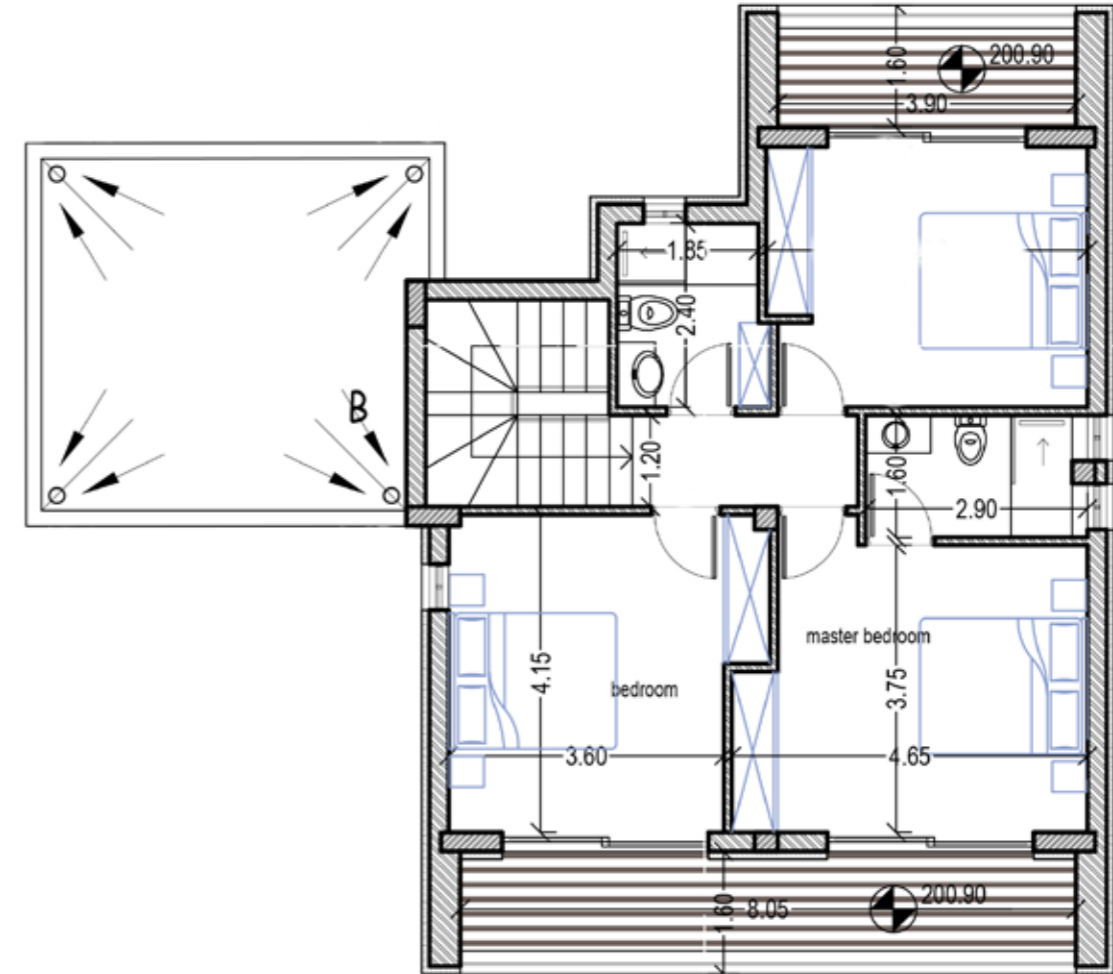
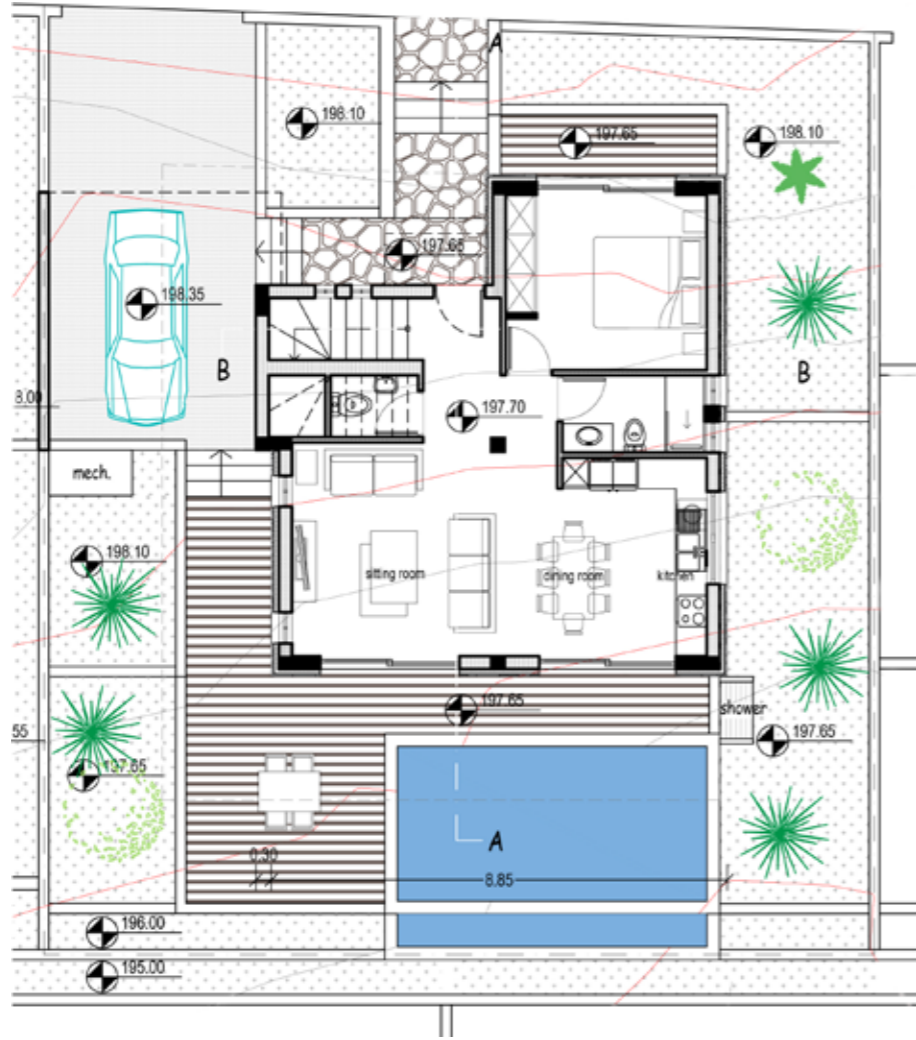


Villa 3 & 4

PLOT 4 Ground Floor plan

Villa Plot 4
Internal Area = 147.29m²
Covered Veranda = 40.23m²
Plot size = 293m²

First Floor plan

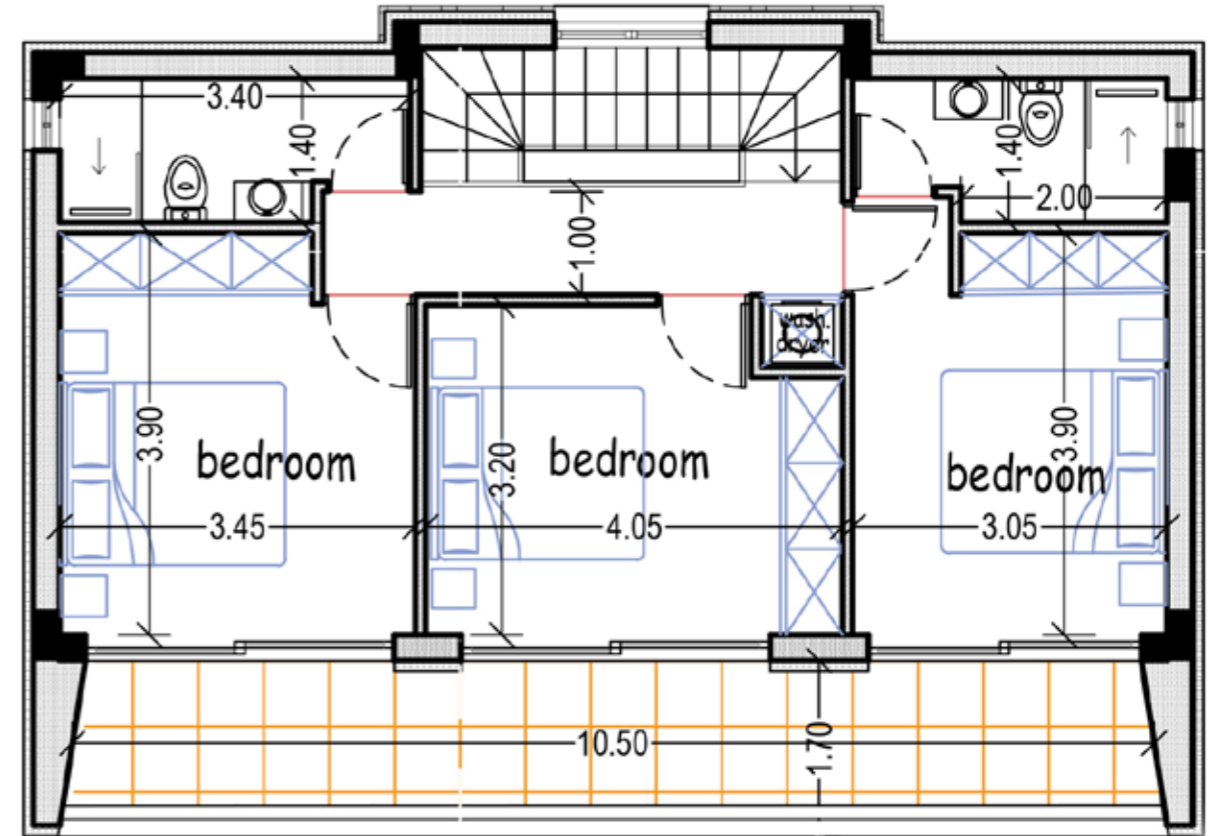
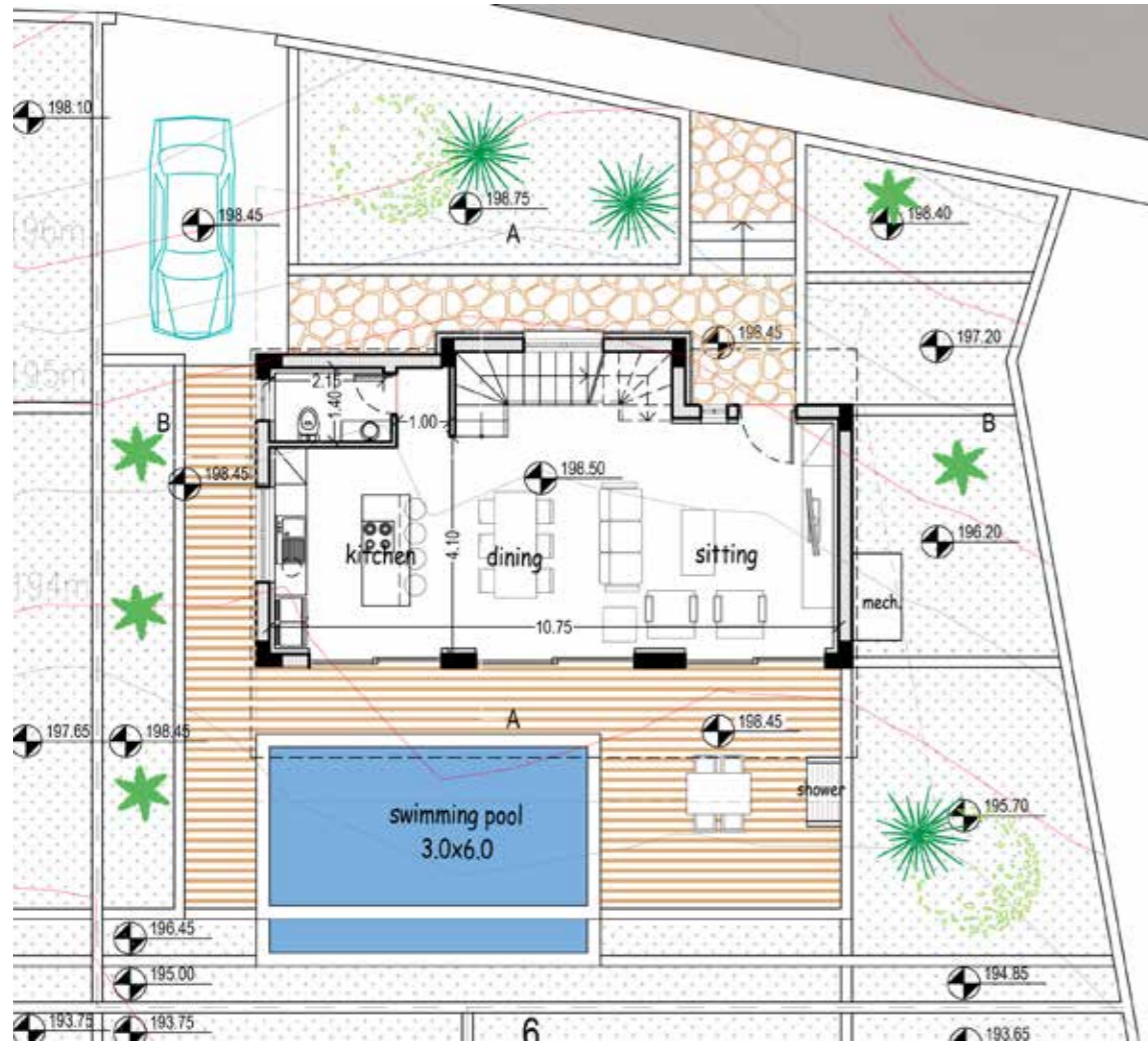


- Luxury Villa
- 4 bedrooms
- Swimming pool
- Private parking
- Peyia, Paphos - Cy

PLOT 5 Ground Floor plan

Villa Plot 5
Internal Area = 127.19m²
Covered Veranda = 37.12m²

First Floor plan

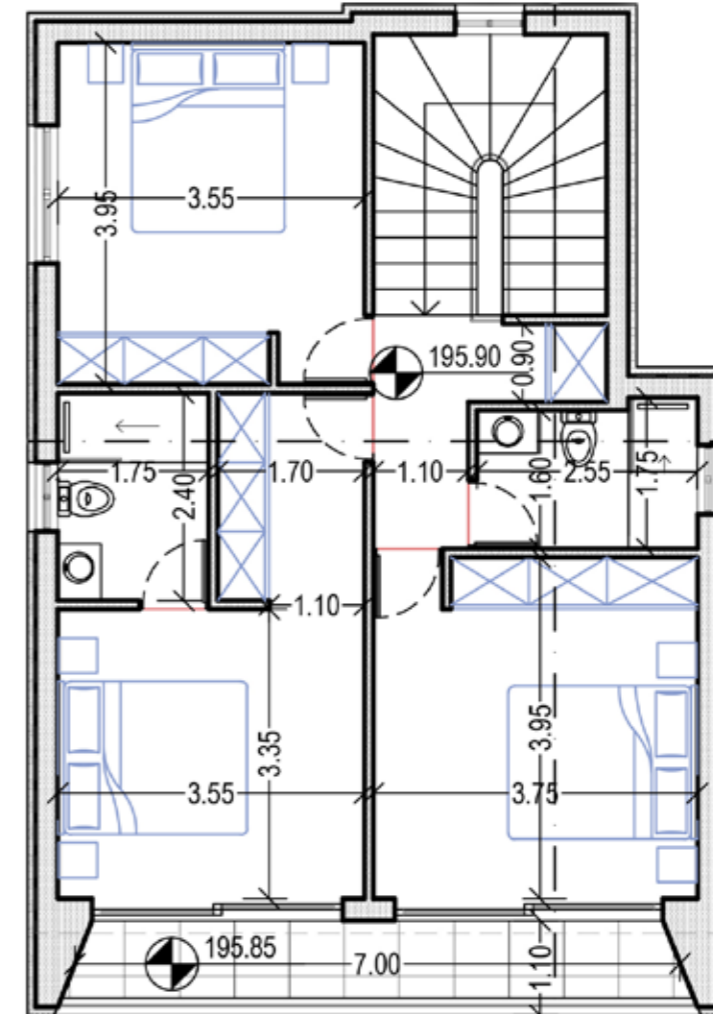
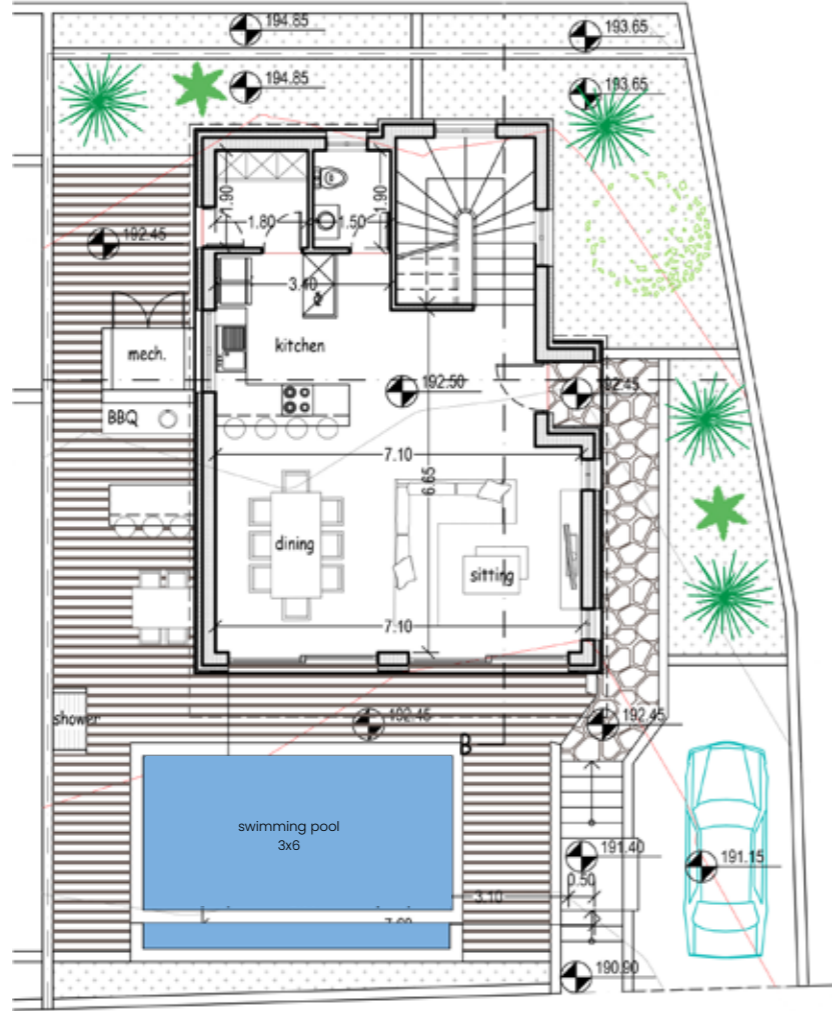


- Luxury Villa
- 3 bedrooms
- Swimming pool
- Private parking
- Storage rooms
- Peyia, Paphos - Cy

PLOT 6 Ground Floor plan

Villa Plot 6
Internal Area = 147.91m²
Covered Veranda = 14.46m²
Plot size = 356m²

First Floor plan

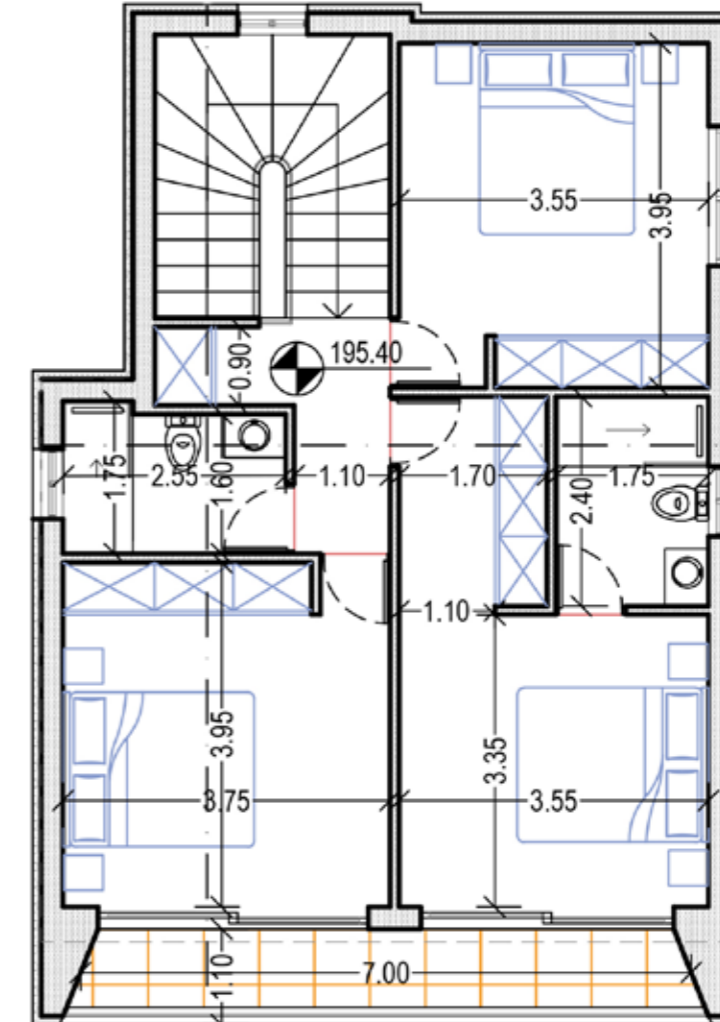
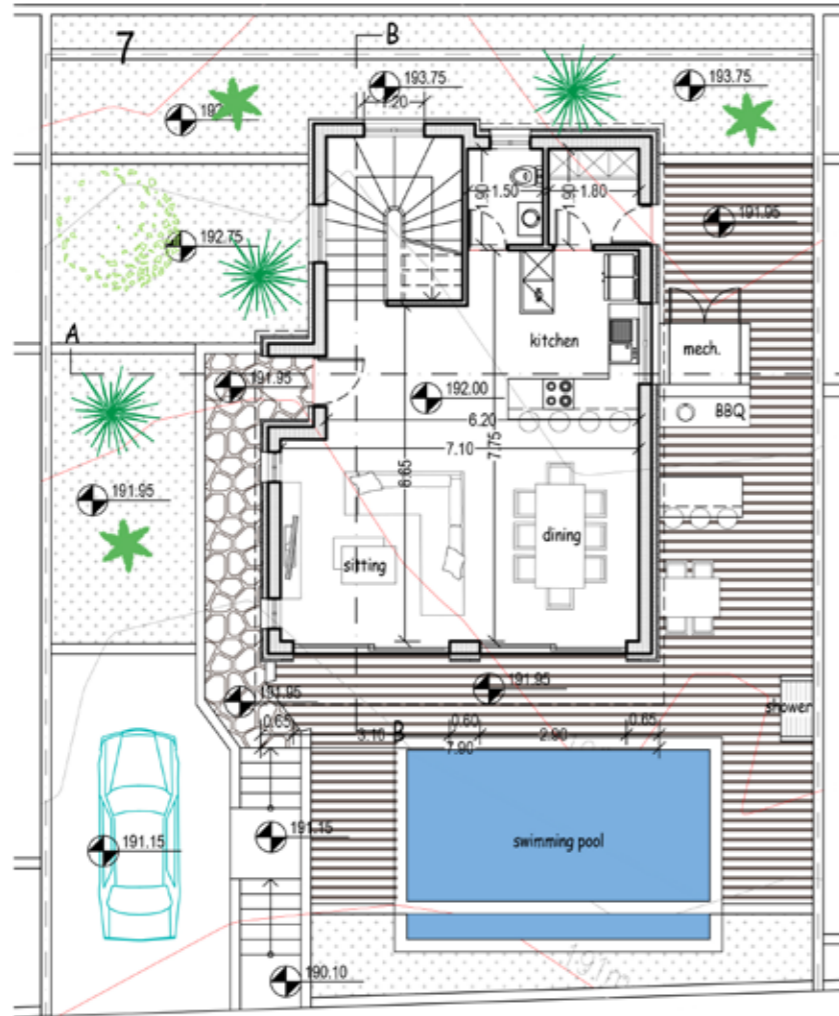


Luxury Villa
3 bedrooms
Swimming pool
Private parking
Storage rooms
Peyia, Paphos - Cy

PLOT 7 Ground Floor plan

Villa Plot 7
Internal Area = 142.91m²
Covered Veranda = 14.46m²

First Floor plan



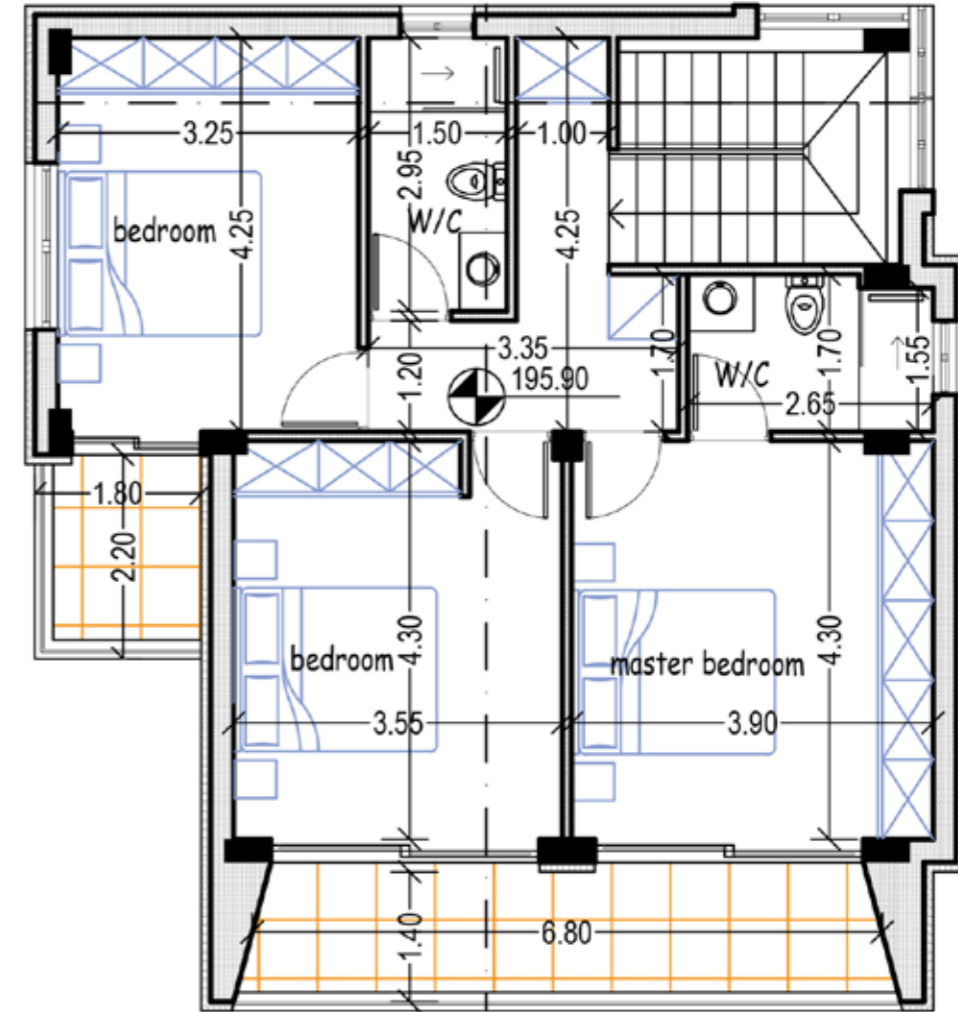
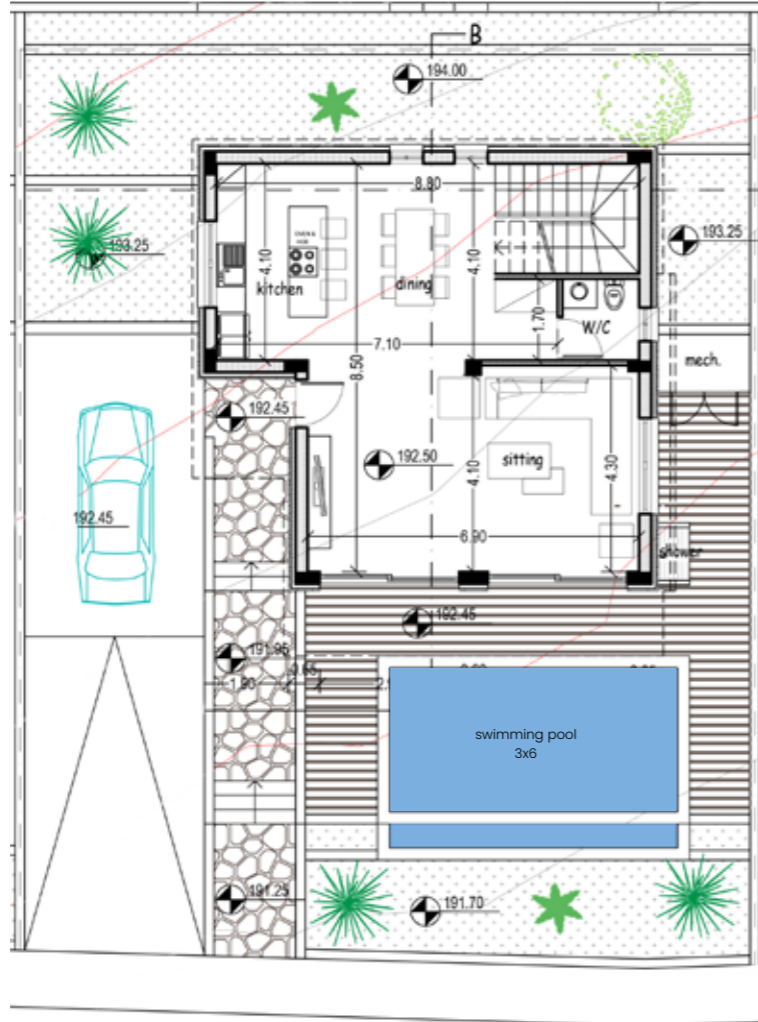
- Luxury Villa
- 3 bedrooms
- Swimming pool
- Private parking
- Storage rooms
- Peyia, Paphos - Cy

PLOT 8

Ground Floor plan

Villa Plot 8
 Internal Area = 150.67m²
 Covered Veranda = 25.55m²
 Plot size = 390m²

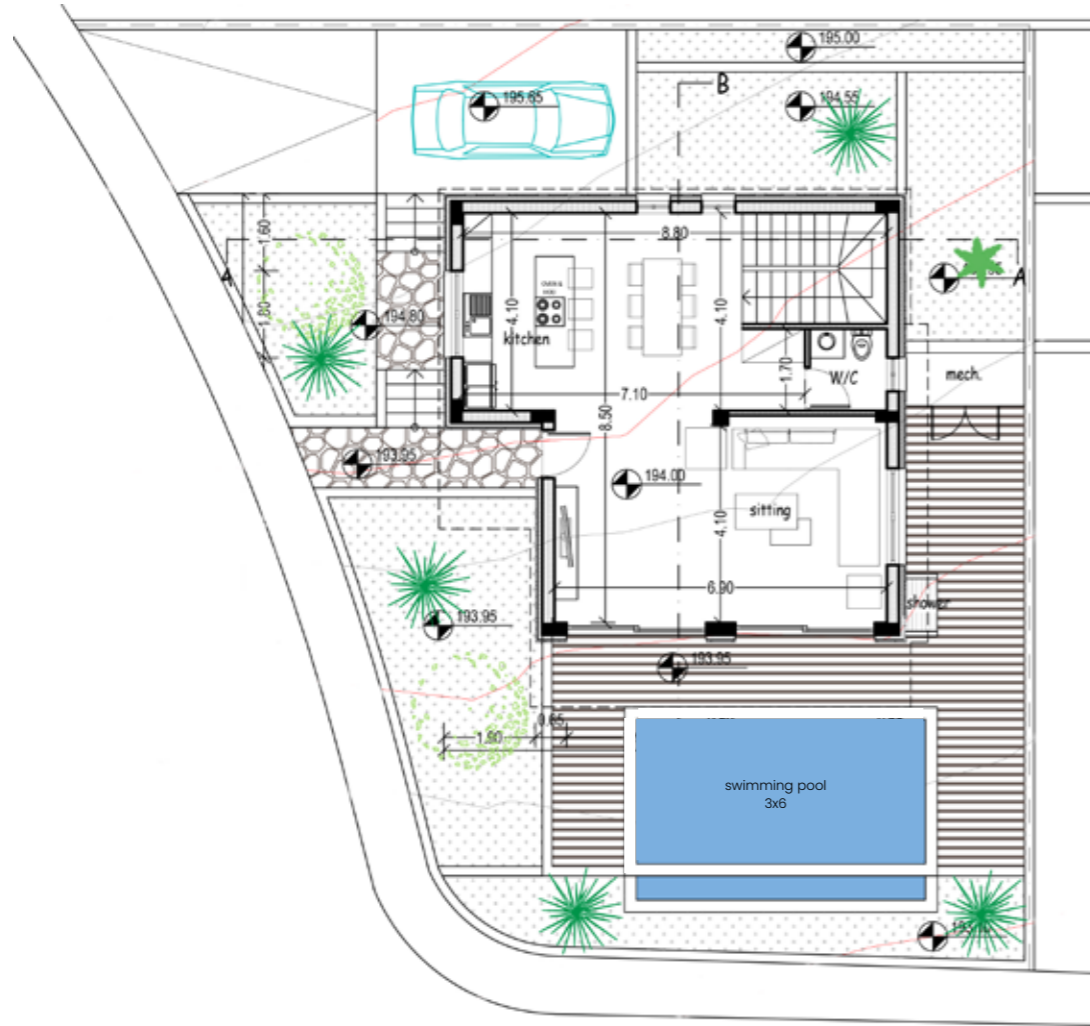
First Floor plan



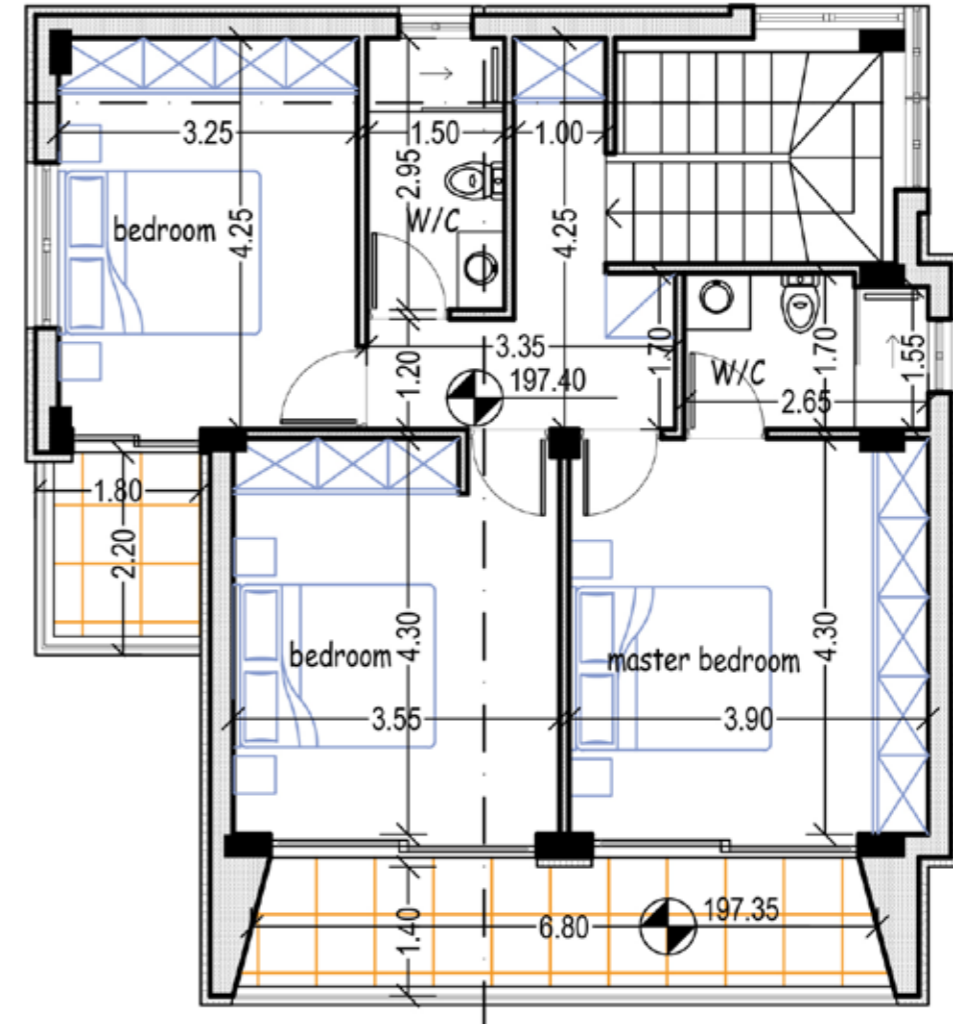
Luxury Villa
 3 bedrooms
 Swimming pool
 Private parking
 Peyia, Paphos - Cy

PLOT 9 Ground Floor plan

Villa Plot 9
Internal Area = 150.67m²
Covered Veranda = 25.55m²
Plot size = 390m²



First Floor plan



Luxury Villa
3 bedrooms
Swimming pool
Private parking
Peyia, Paphos - Cy



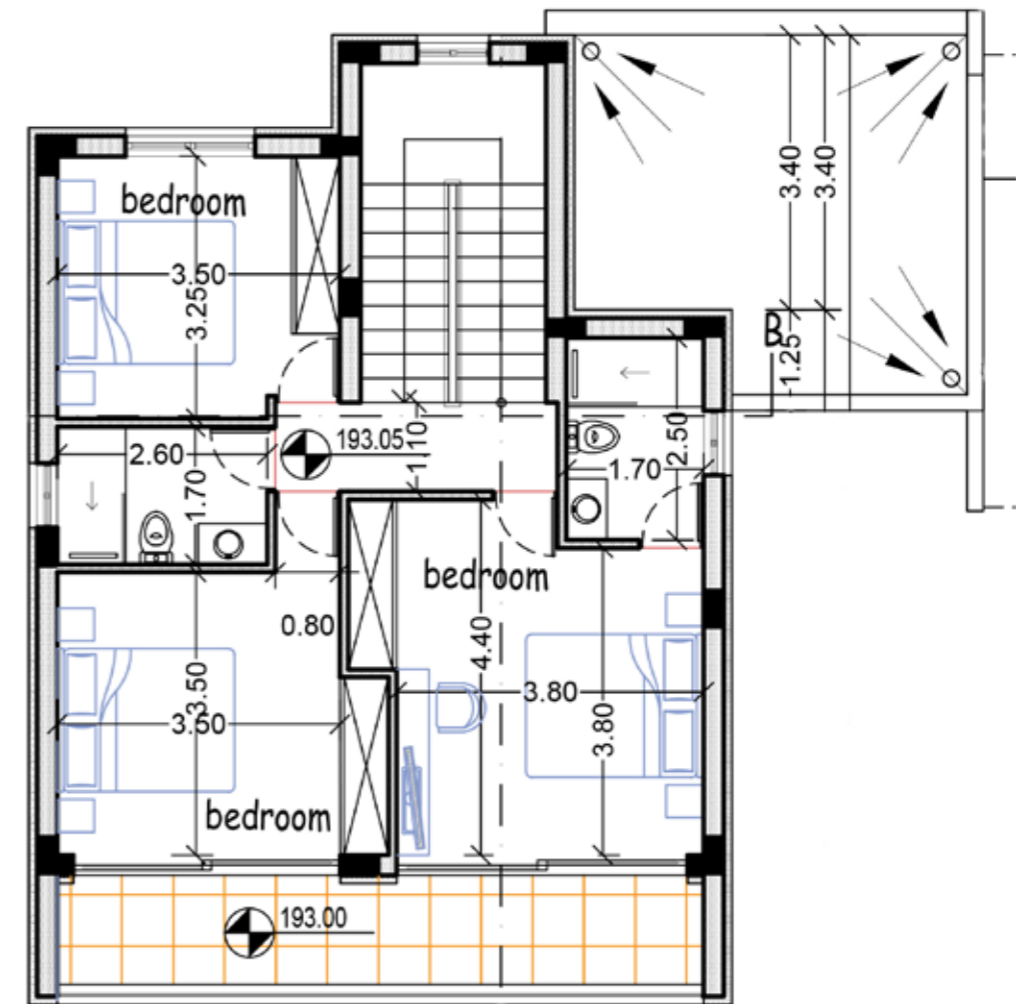
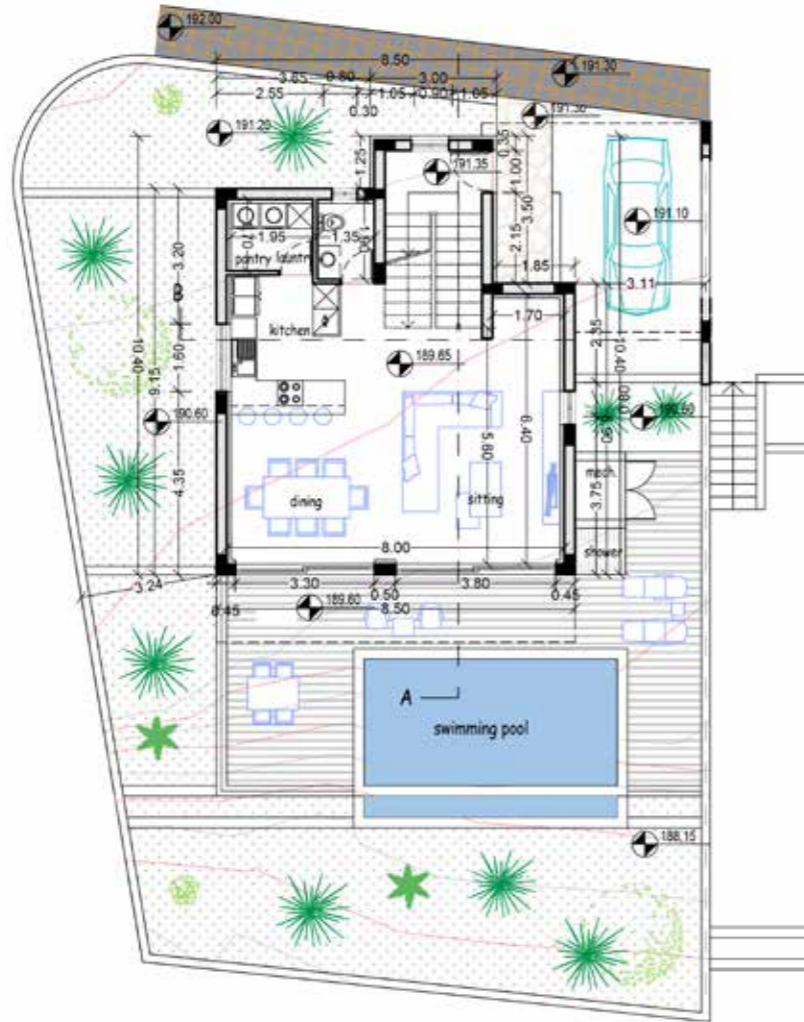
Villas 8 & 9



PLOT 10 Ground Floor plan

Villa Plot 10
Internal Area = 144.29m²
Covered Veranda = 27.20m²
Garage = 24.73m²
Plot size = 321.97m²

First Floor plan



Luxury Villa
3 bedrooms
Swimming pool
Private parking
Storage rooms
Peyia, Paphos - Cy





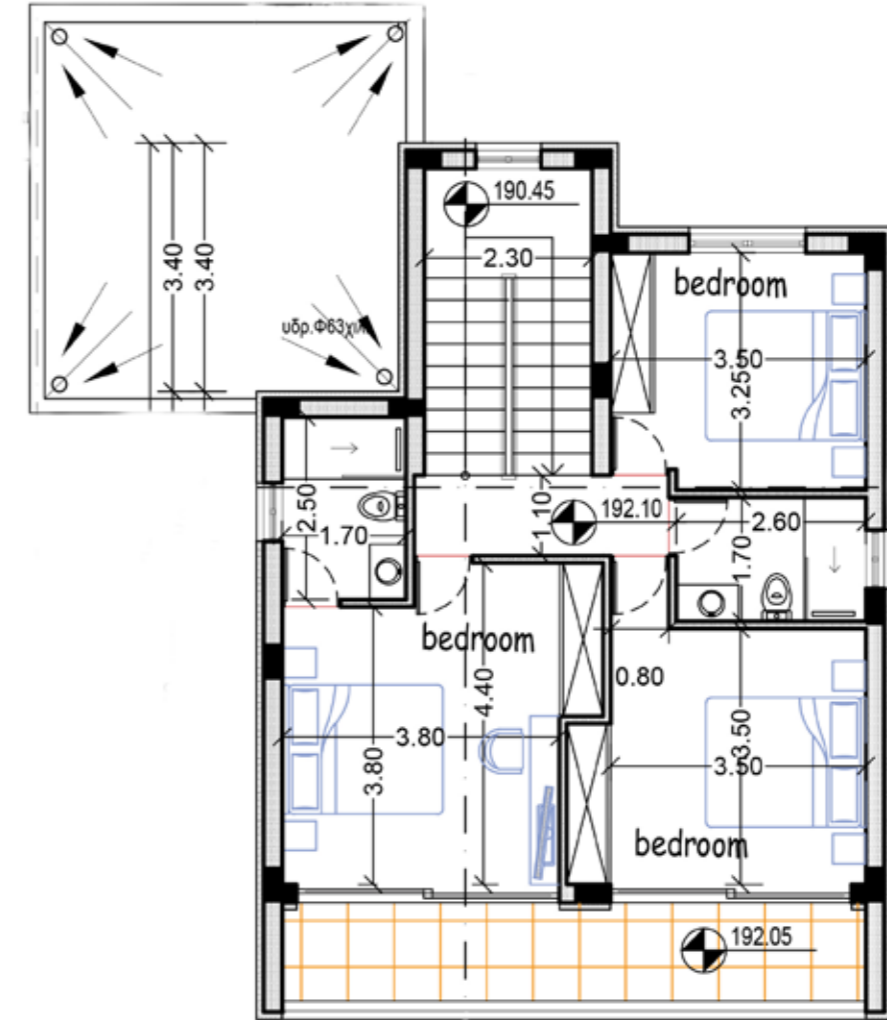
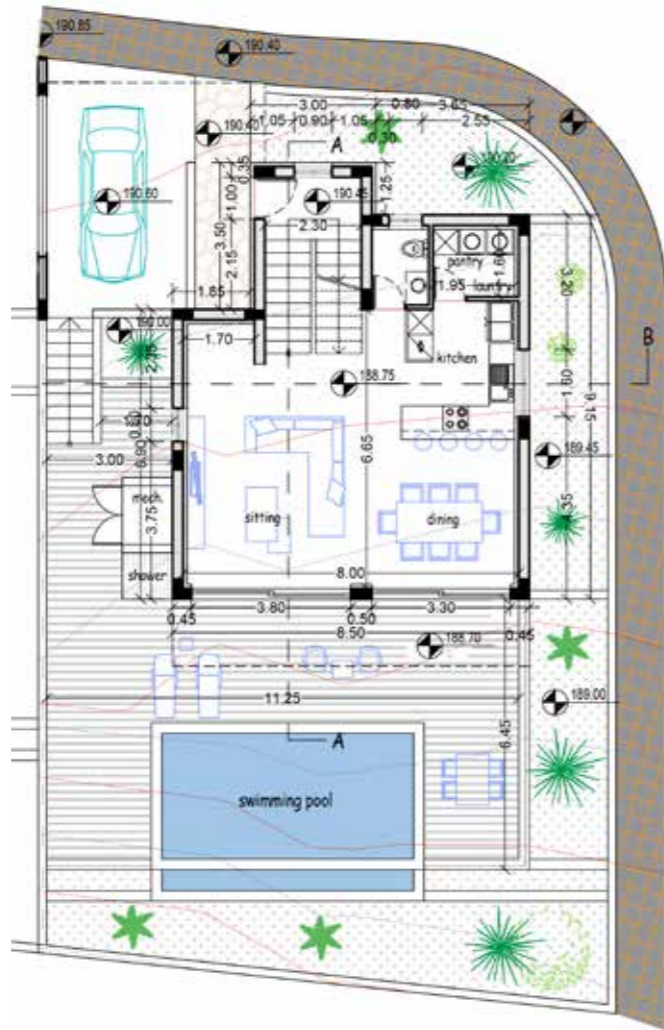
Villa 11

Villas 4, 7 & 5

PLOT 11 Ground Floor plan

Villa Plot 11
 Internal Area = 144.29m²
 Covered Veranda = 27.20m²
 Garage = 29.96m²
 Plot size = 287.70m²

First Floor plan



Luxury Villa
 3 bedrooms
 Swimming pool
 Private parking
 Storage rooms
 Peyia, Paphos - Cy



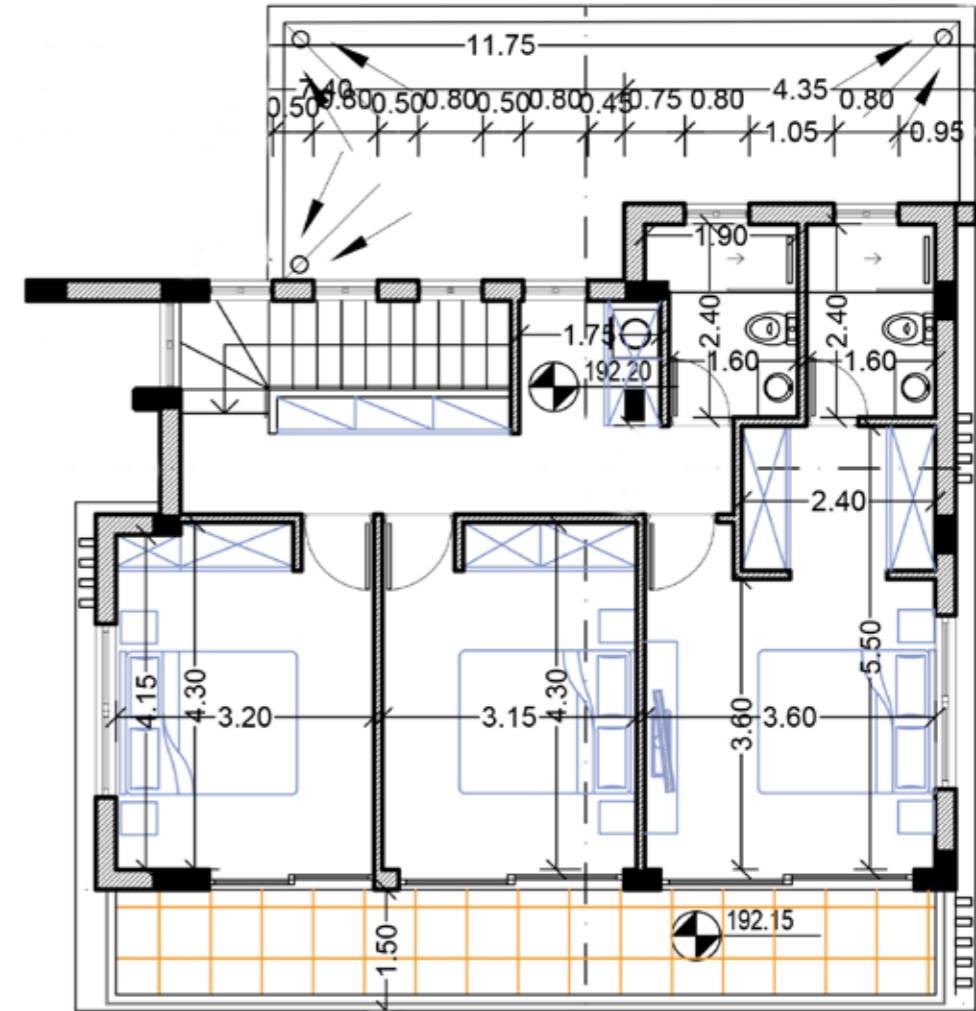
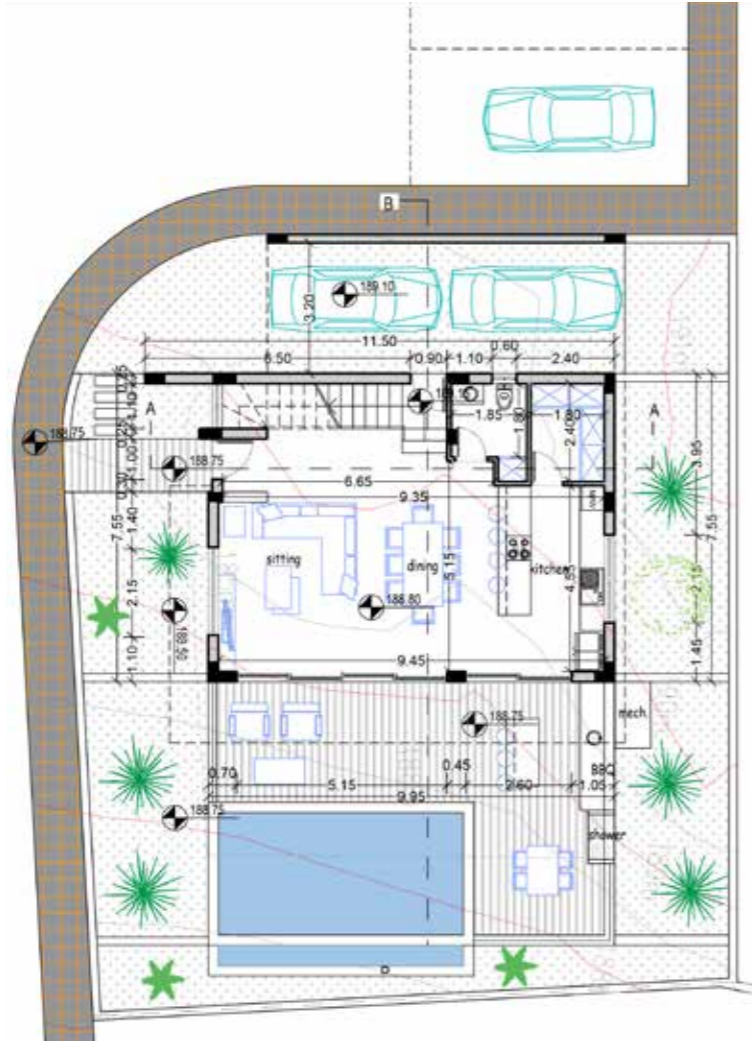
Villas 12, 13 & 14

PLOT 12

Ground Floor plan

Villa Plot 12
 Internal Area = 152.29m²
 Covered Veranda = 29.80m²
 Garage = 29.75m²
 Plot size = 299.01m²

First Floor plan



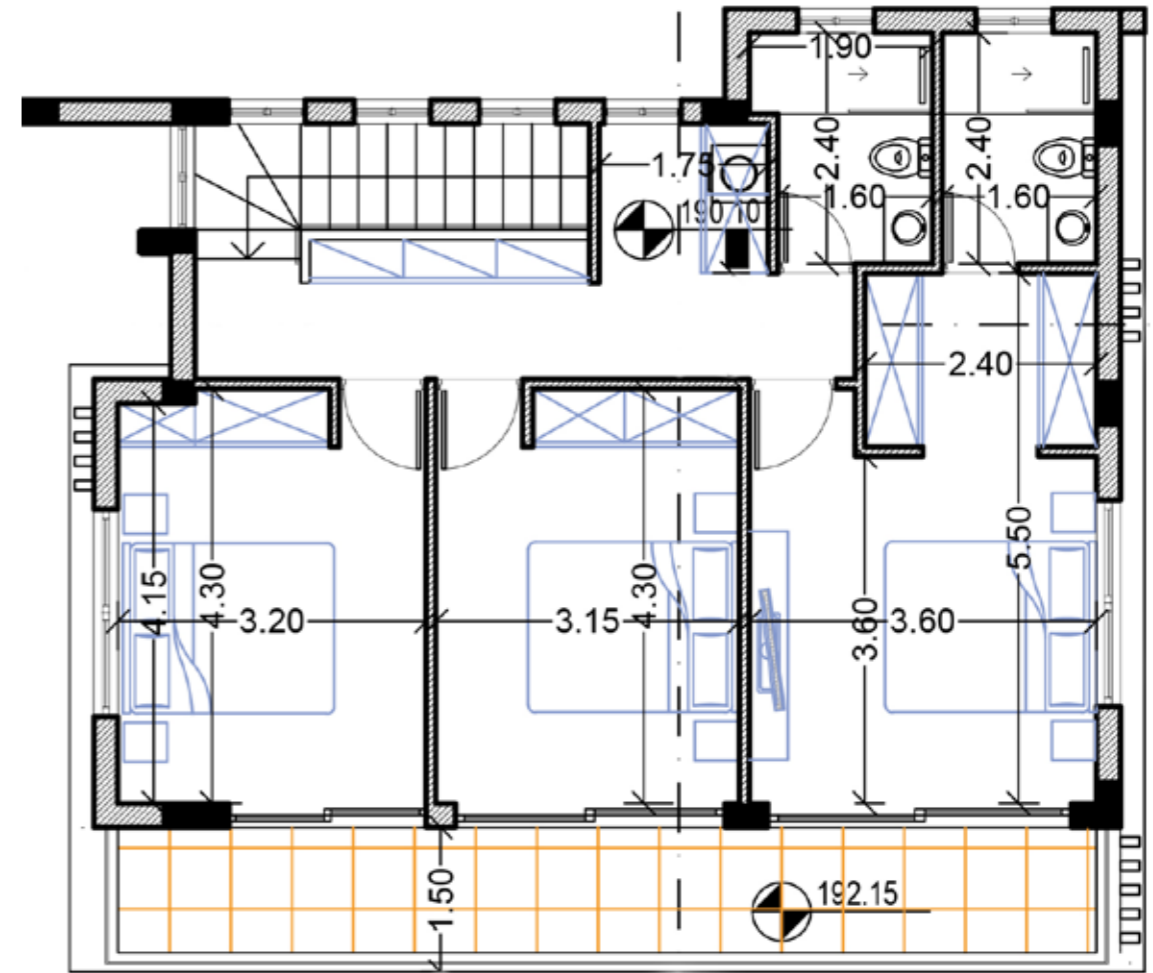
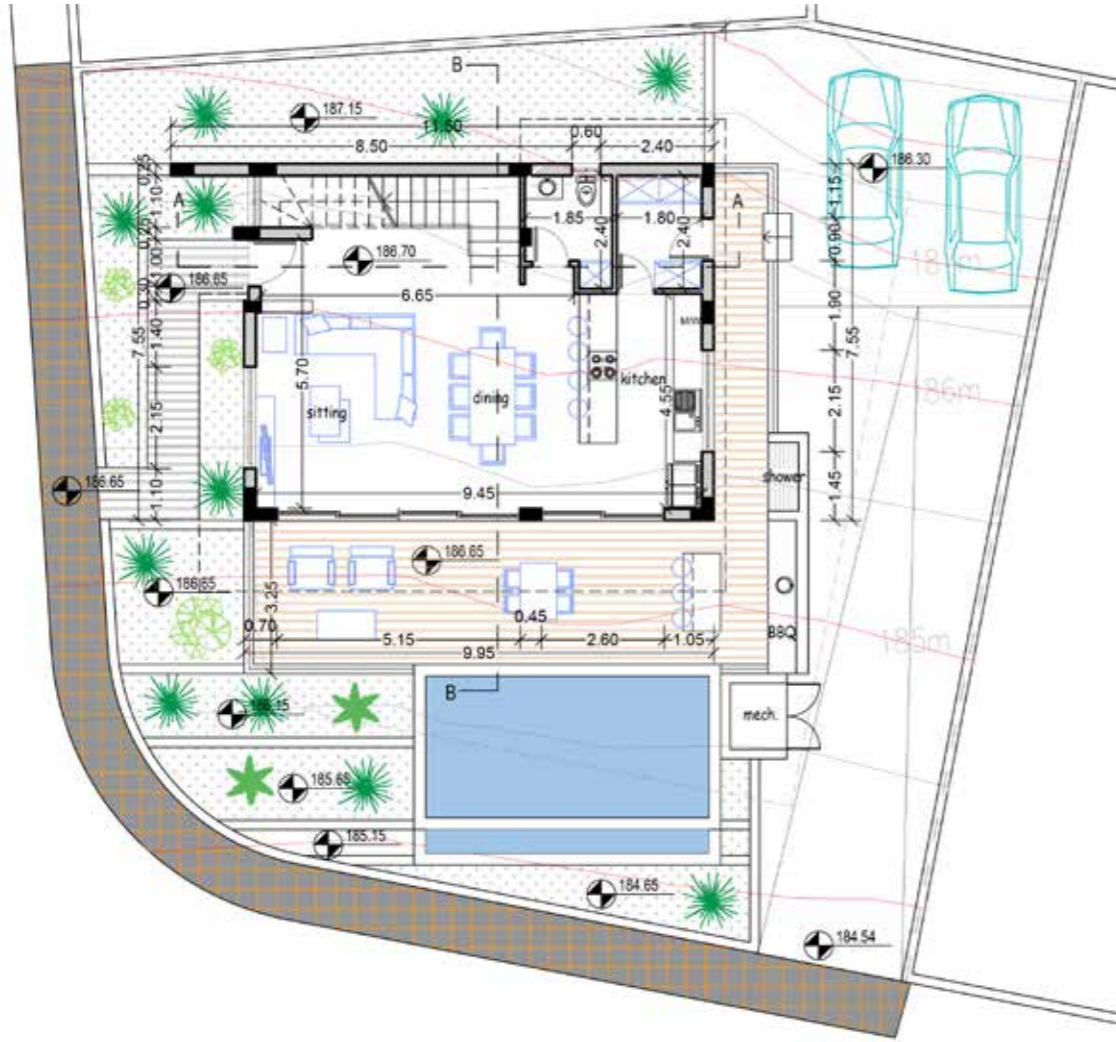
Luxury Villa
 3 bedrooms
 Swimming pool
 Private parking
 Storage rooms
 Peyia, Paphos - Cy

PLOT 13

Ground Floor plan

Villa Plot 13
 Internal Area = 152.29m²
 Covered Veranda = 29.80m²
 Plot size = 347.65m²

First Floor plan



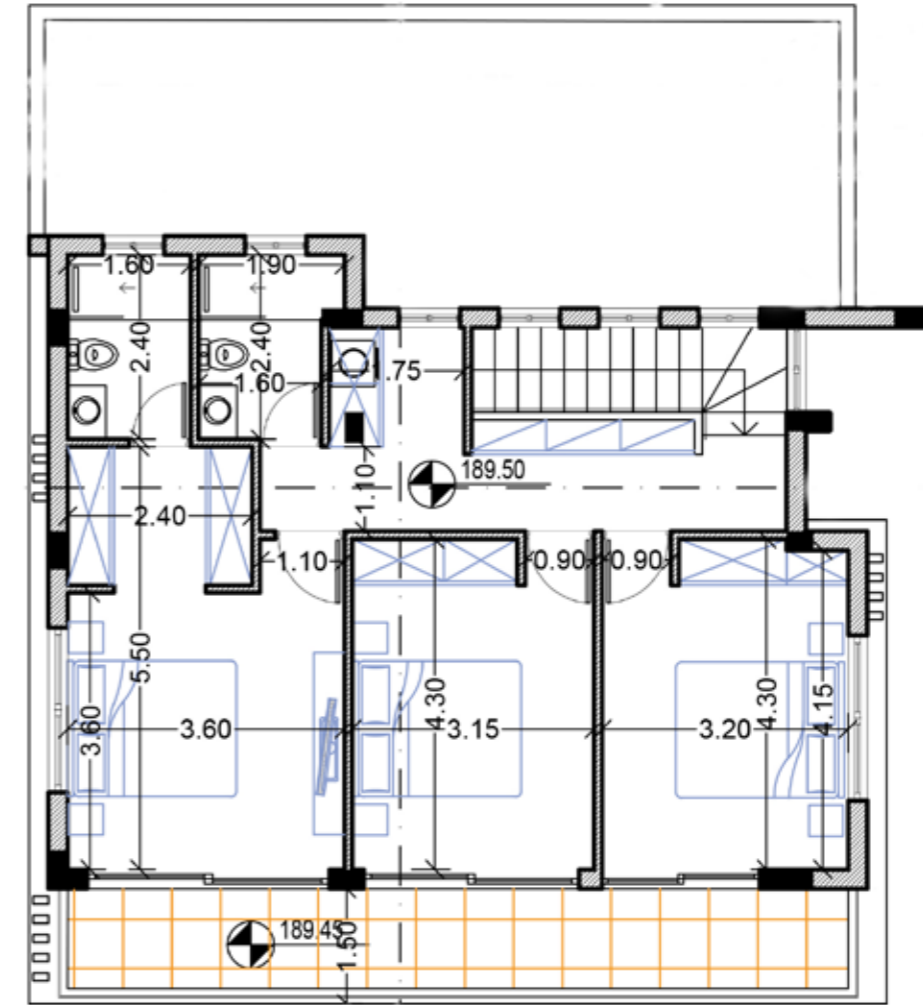
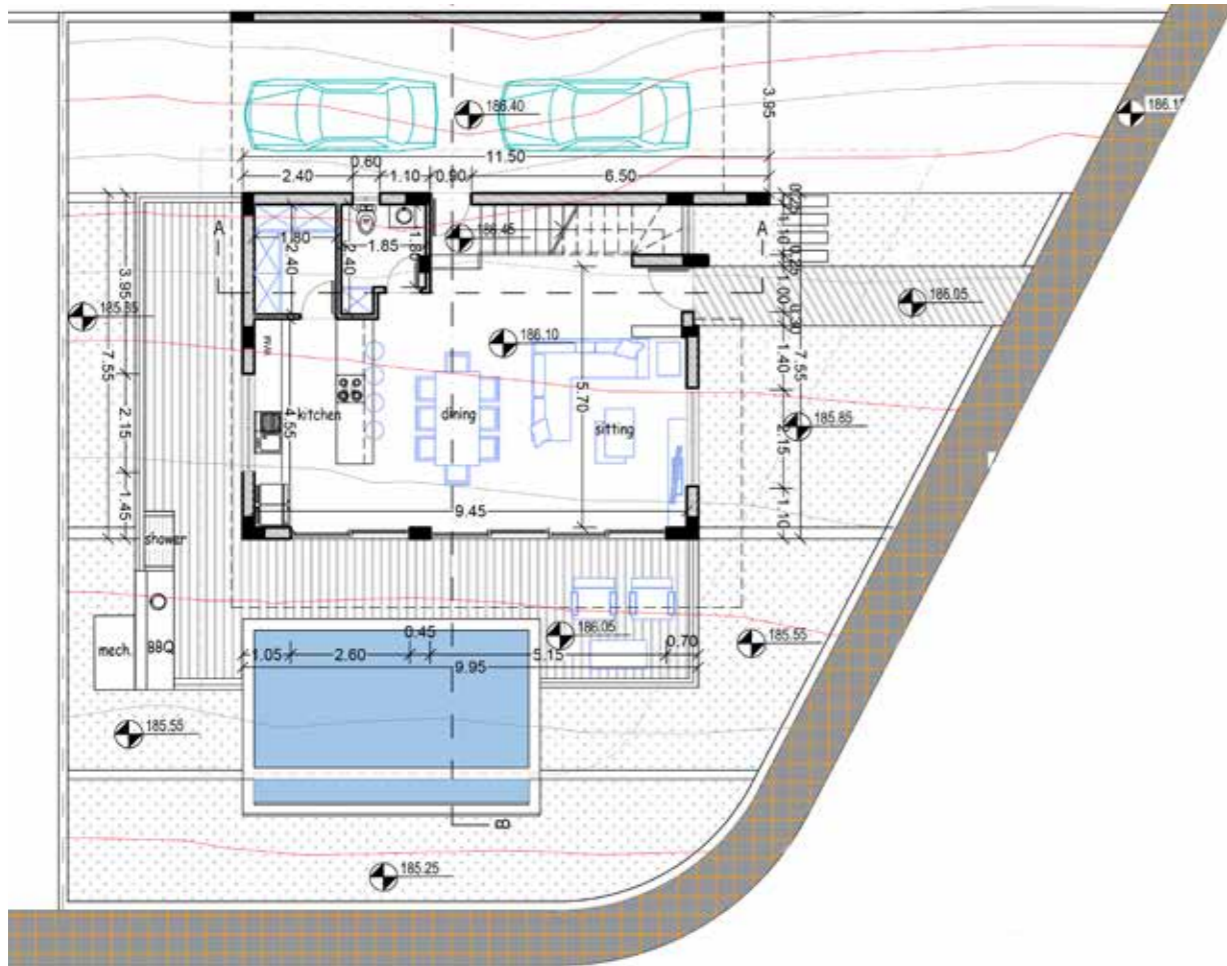
- Luxury Villa
- 3 bedrooms
- Swimming pool
- Private parking
- Storage rooms
- Peyia, Paphos - Cy

PLOT 14

Ground Floor plan

Villa Plot 14
 Internal Area = 152.29m²
 Covered Veranda = 29.80m²
 Garage = 36.55m²
 Plot size = 370.40m²

First Floor plan



- Luxury Villa
- 3 bedrooms
- Swimming pool
- Private parking
- Storage rooms
- Peyia, Paphos - Cy



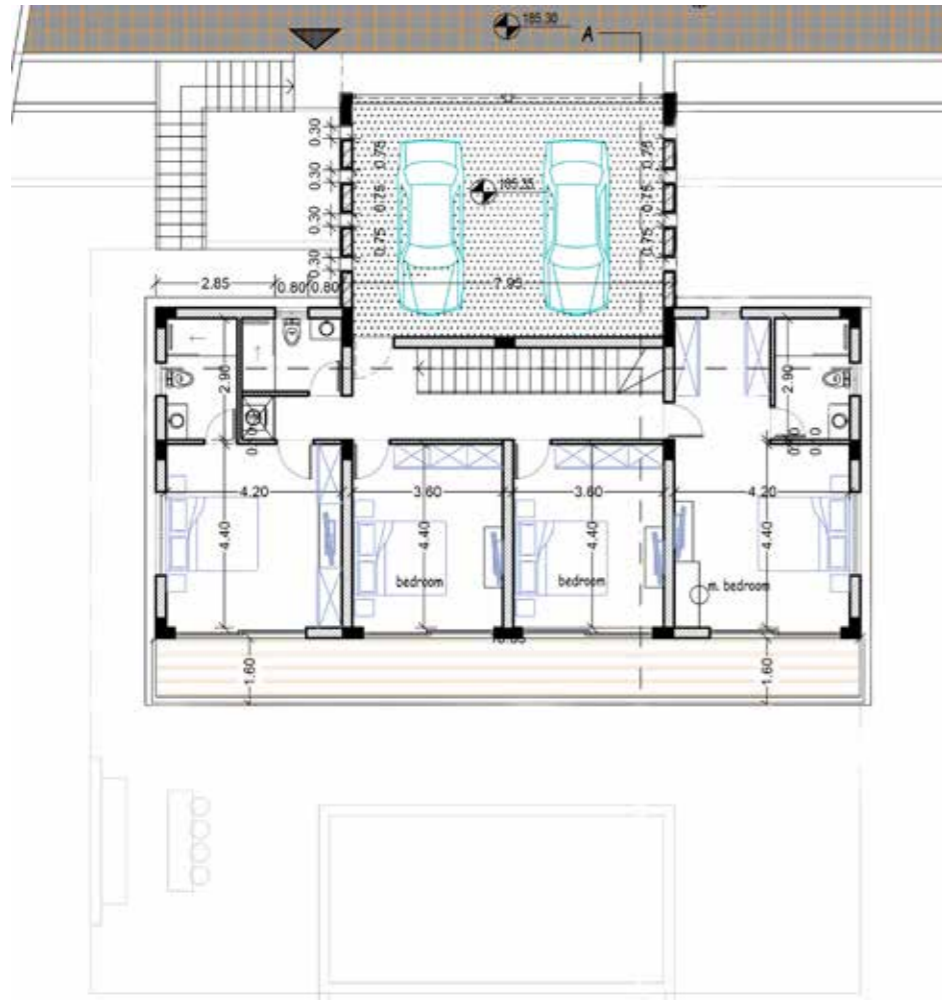


Villas 15 & 16

PLOT 15 First Floor plan

Villa Plot 15
Internal Area = 254m²
Covered Veranda = 55m²
Garage = 35m²
Plot size = 800m²

Ground Floor plan



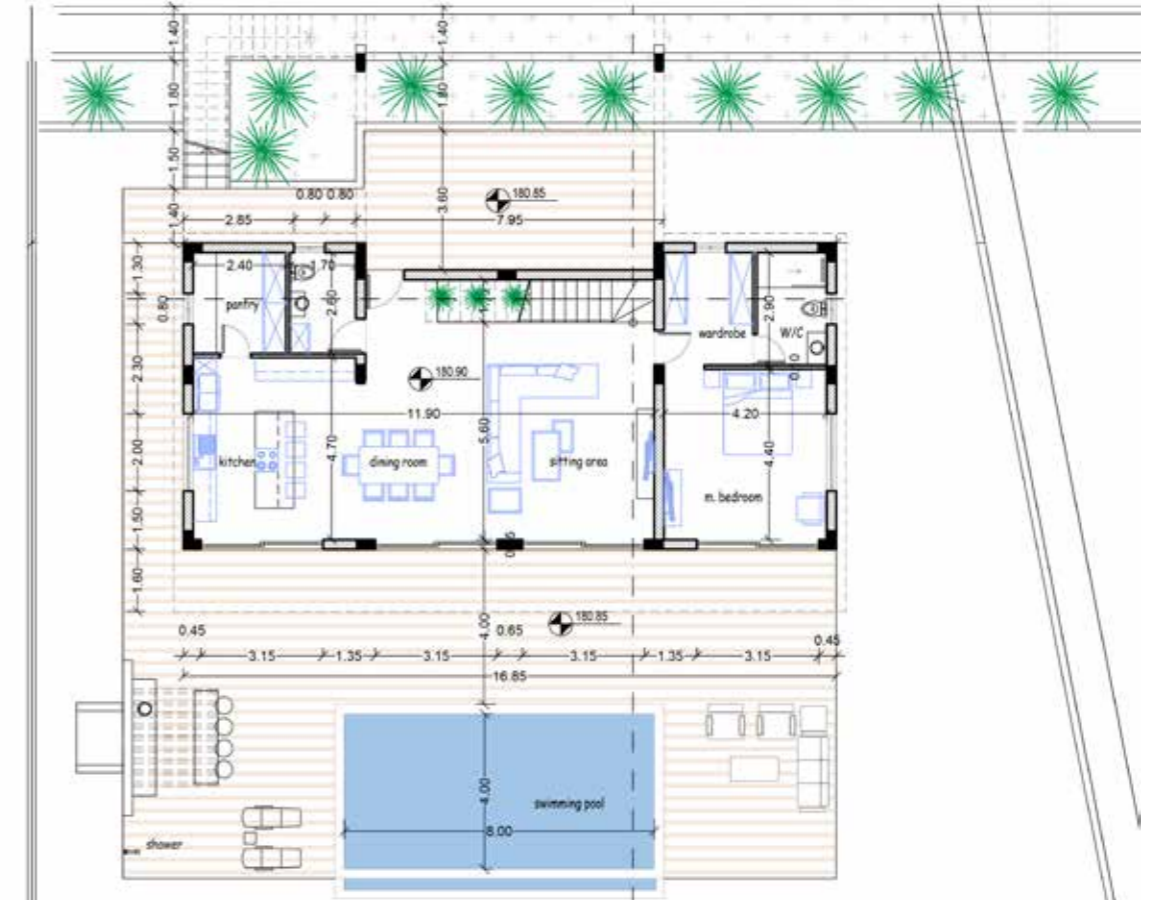
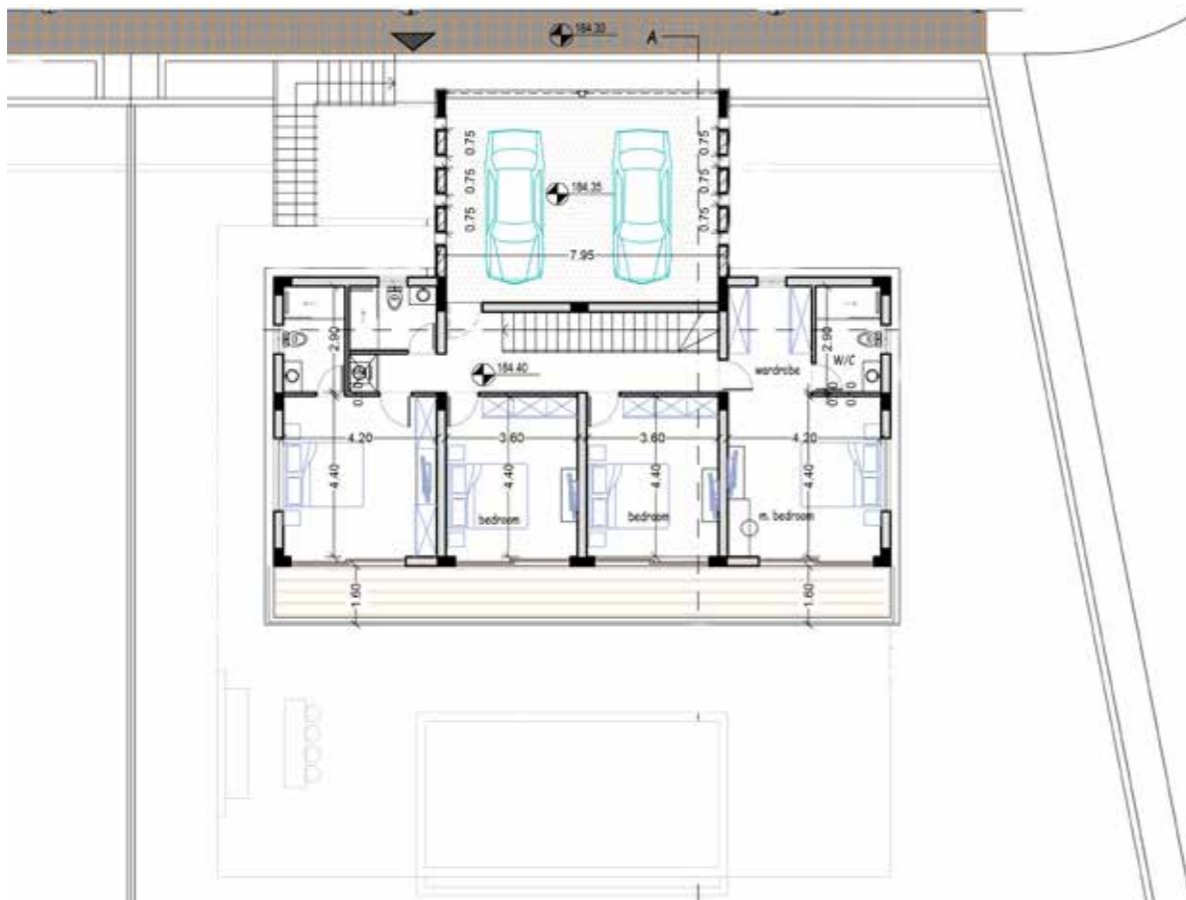
Luxury Villa
5 bedrooms
Swimming pool
Private parking
Storage rooms
Peyia, Paphos - Cy

PLOT 16

First Floor plan

Villa Plot 16
 Internal Area = 254m²
 Covered Veranda = 55m²
 Garage = 35m²
 Plot size = 800m²

Ground Floor plan



- Luxury Villa
- 5 bedrooms
- Swimming pool
- Private parking
- Storage rooms
- Peyia, Paphos - Cy





Villa 14

Villas 17, 18 & 19

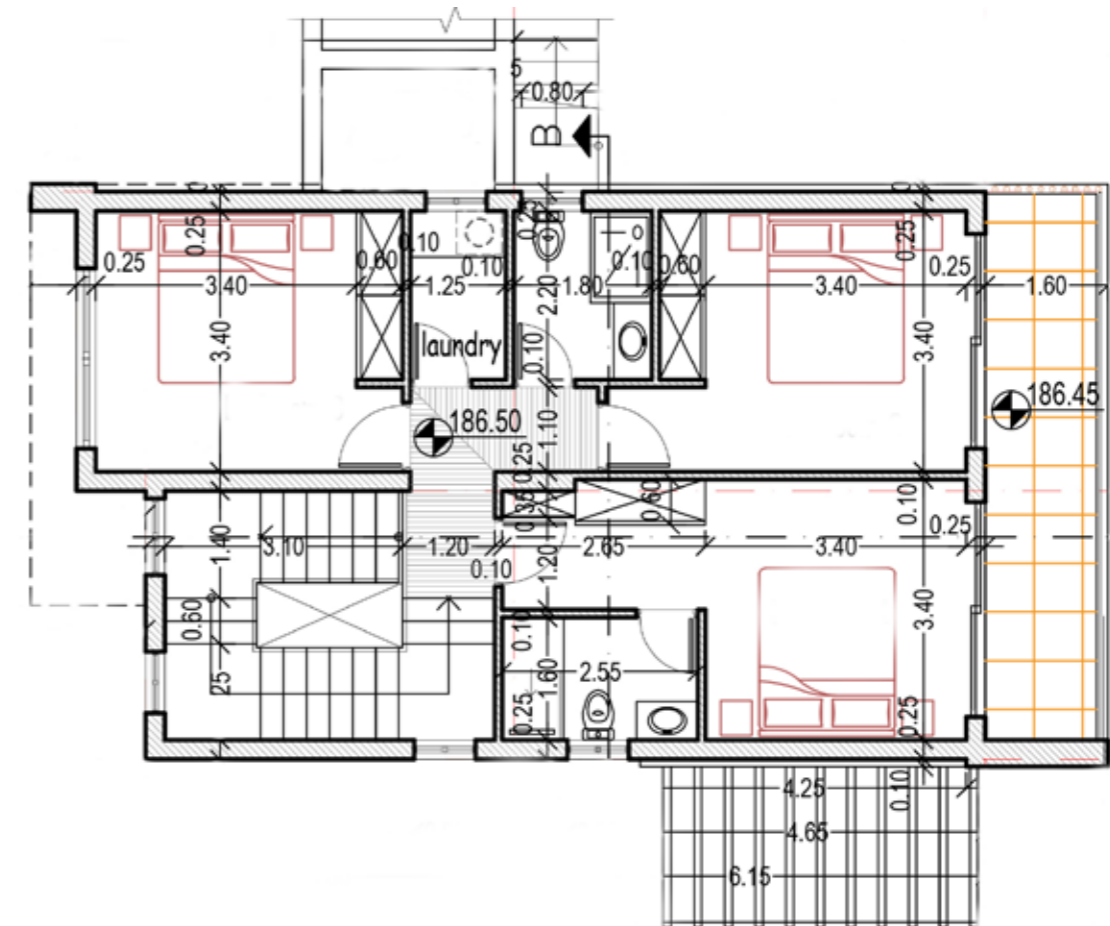
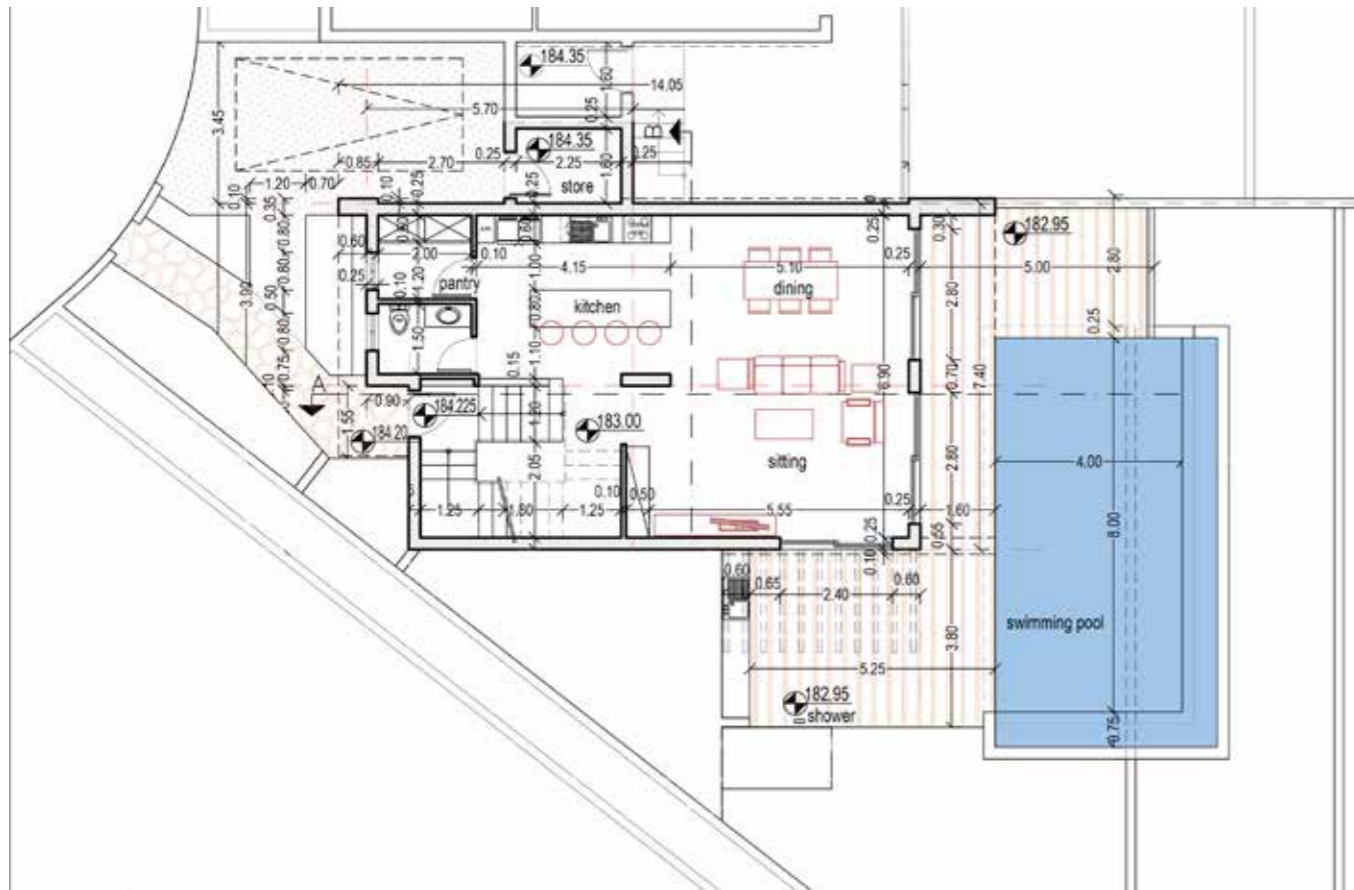


PLOT 17

Ground Floor plan

Villa Plot 17
 Internal Area = 169.08m²
 Covered Veranda = 22.88m²
 Plot size = 835m²

First Floor plan



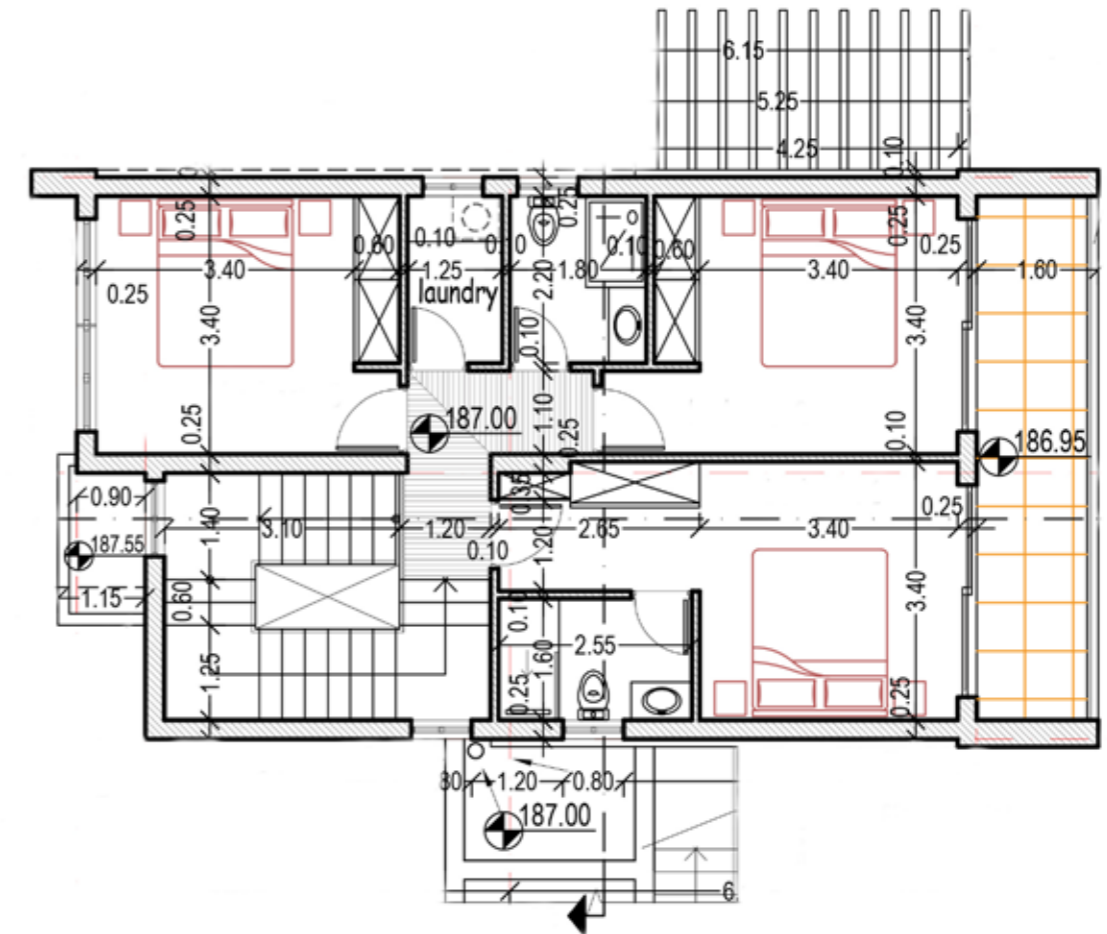
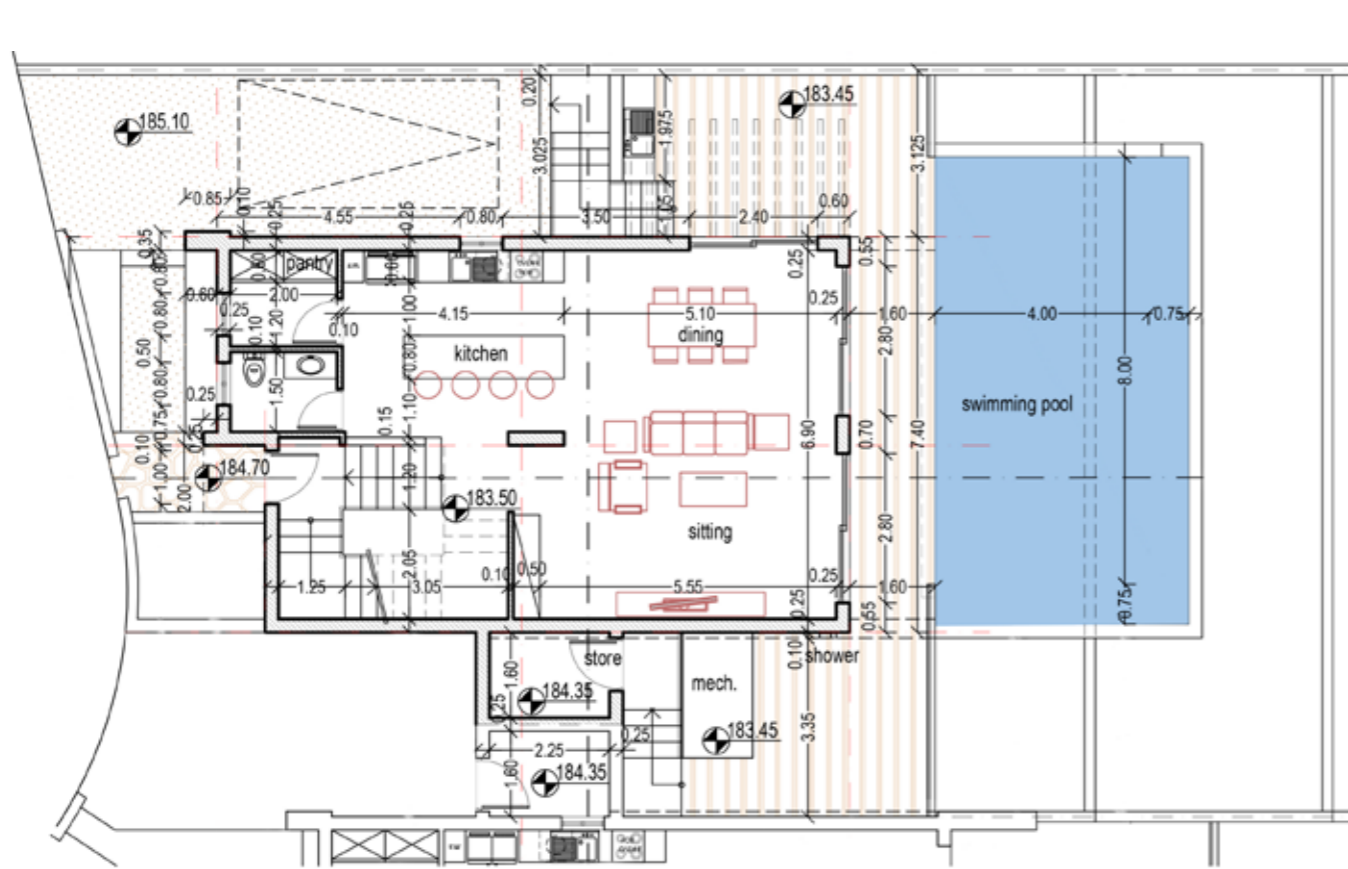
- Luxury Villa
- 3 bedrooms
- Swimming pool
- Private parking
- Storage rooms
- Peyia, Paphos - Cy

PLOT 18

Ground Floor plan

Villa Plot 18
 Internal Area = 169.08m²
 Covered Veranda = 22.88m²
 Plot size = 511m²

First Floor plan



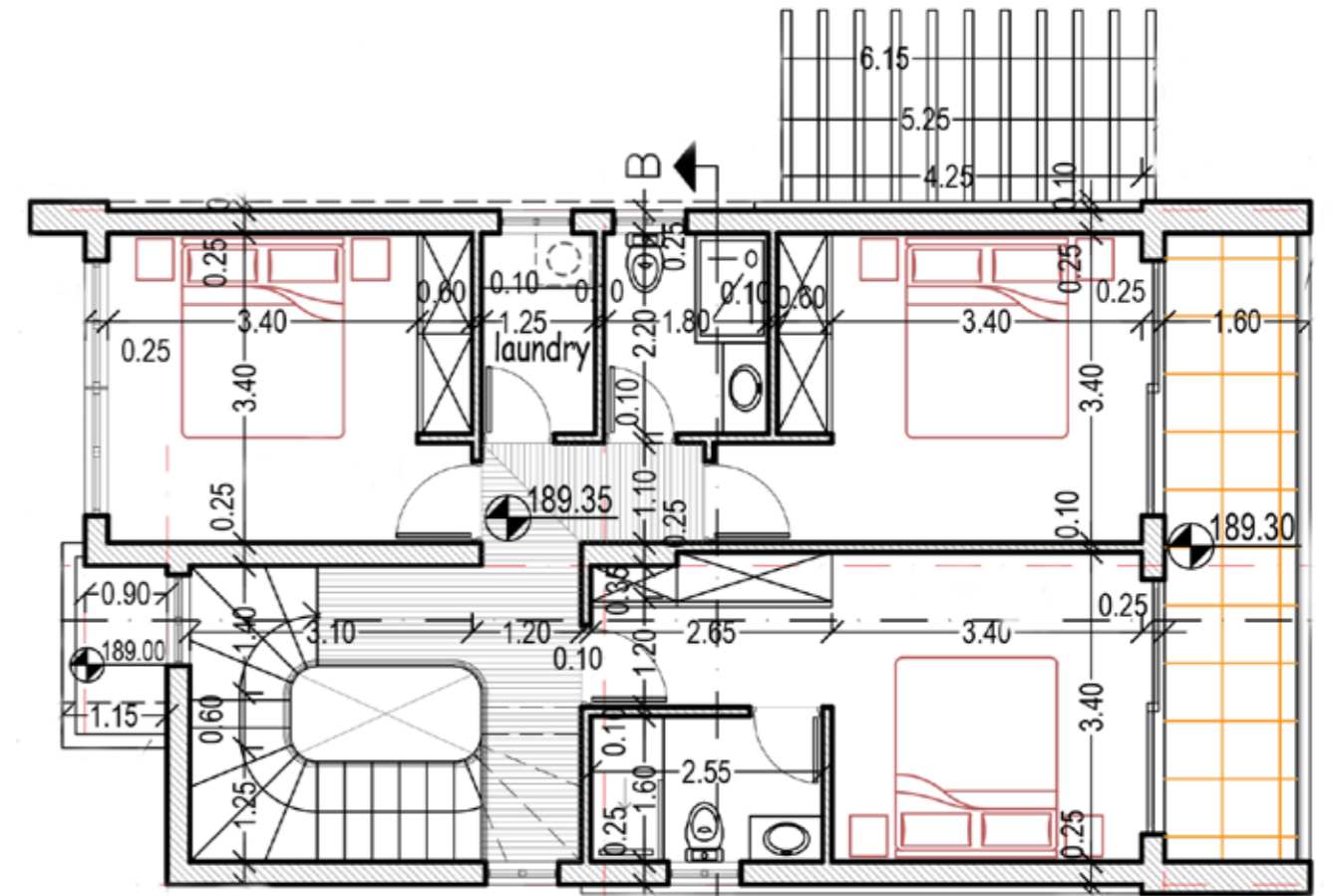
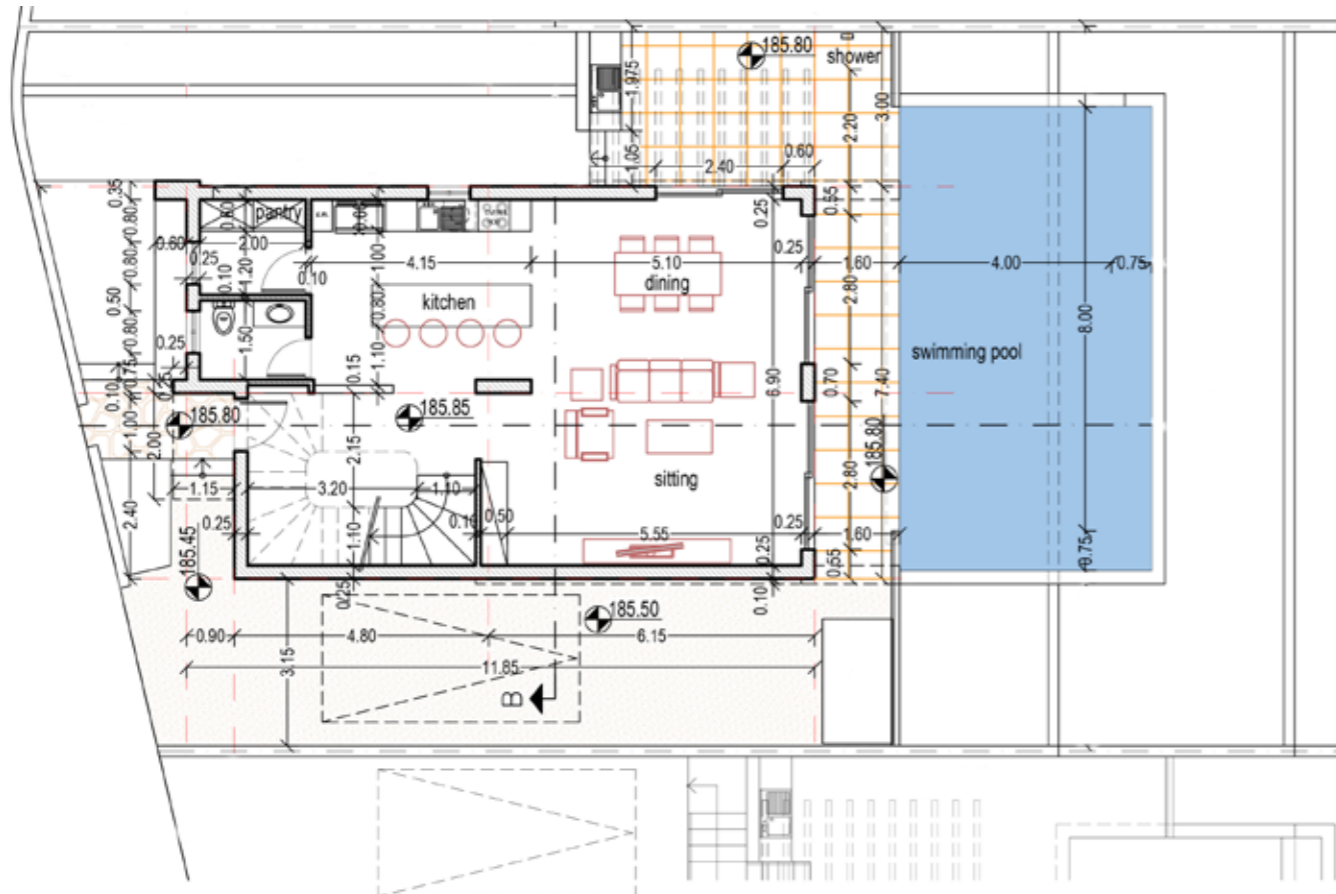
- Luxury Villa
- 3 bedrooms
- Swimming pool
- Private parking
- Storage rooms
- Peyia, Paphos - Cy

PLOT 19

Ground Floor plan

Villa Plot 19
 Internal Area = 169.08m²
 Covered Veranda = 22.88m²
 Plot size = 517m²

First Floor plan



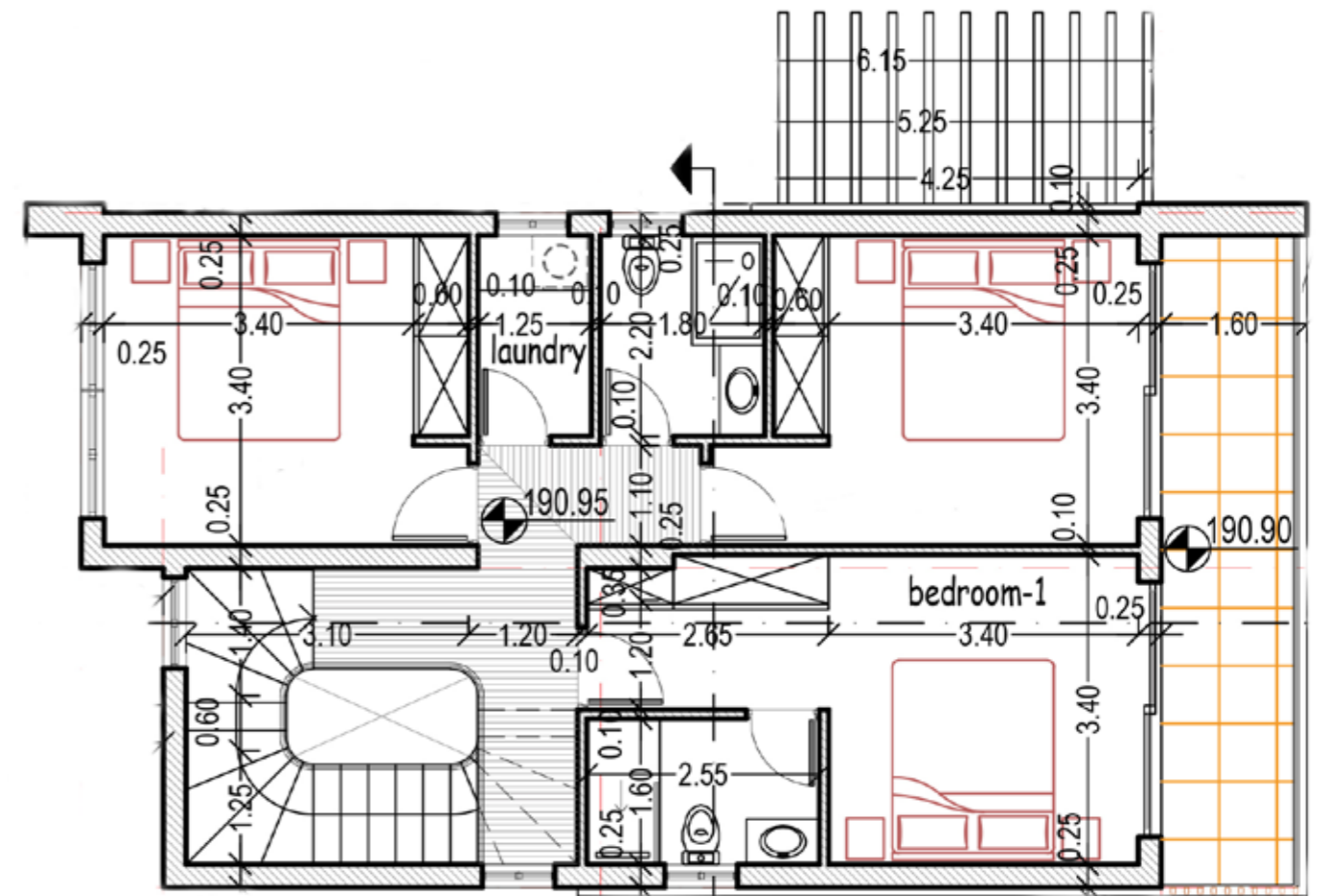
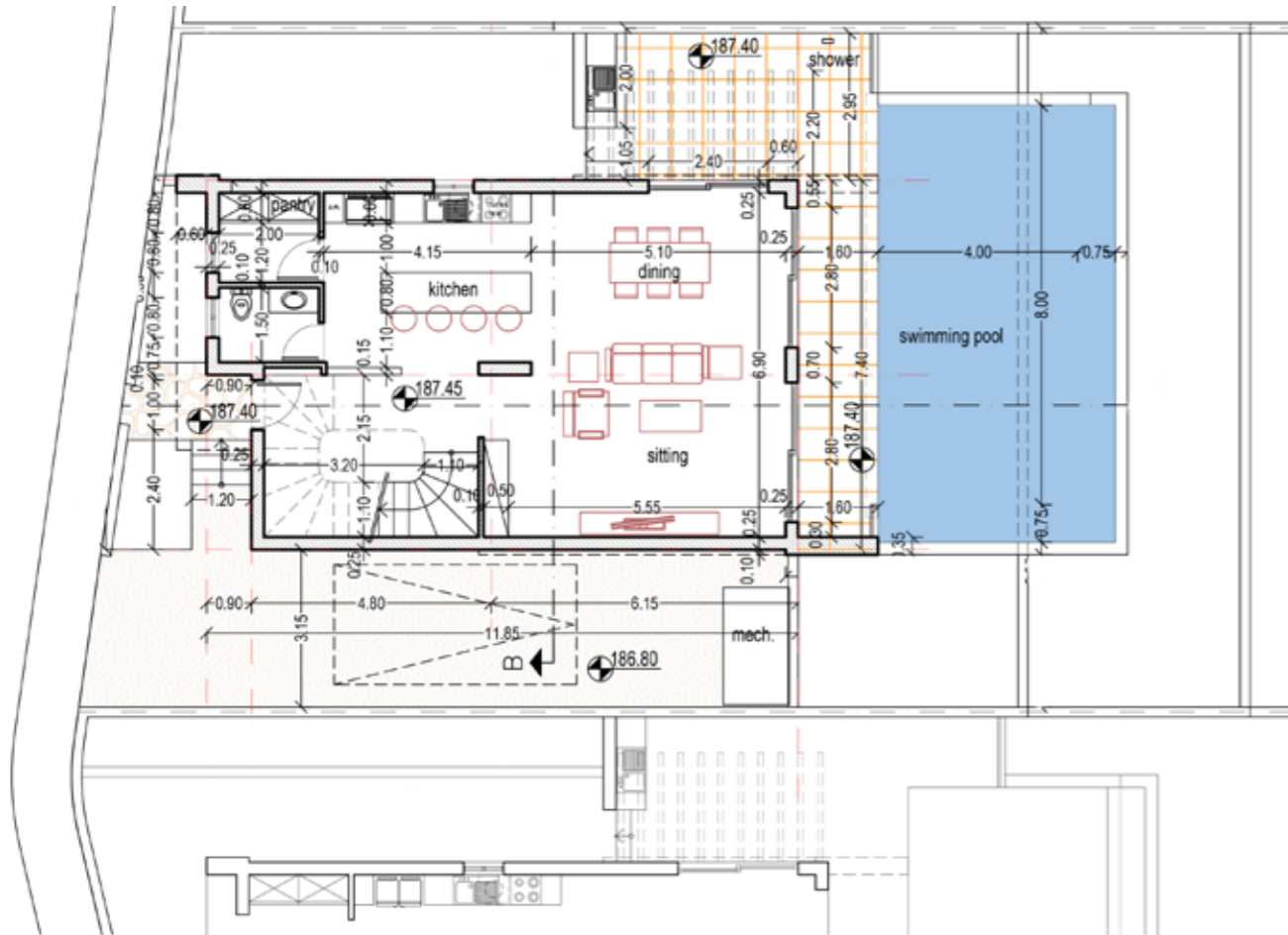
- Luxury Villa
- 3 bedrooms
- Swimming pool
- Private parking
- Storage rooms
- Peyia, Paphos - Cy

PLOT 20

Ground Floor plan

Villa Plot 20
 Internal Area = 169.08m²
 Covered Veranda = 22.88m²
 Plot size = 445m²

First Floor plan



- Luxury Villa
- 3 bedrooms
- Swimming pool
- Private parking
- Storage rooms
- Peyia, Paphos - Cy

PROJECT DIMENSIONS



UNIT NUMBER	PLOT SIZE m ²	BEDROOMS	BATHROOMS	COVERED INTERNAL AREA m ²
PLOT 1	626	4	3	215
PLOT 2	322	3	2	110.16
PLOT 3	293	3	3	147.29
PLOT 4	293	4	4	147.29
PLOT 5	317	3	3	127.19
PLOT 6	356	3	3	142.91
PLOT 7	388	3	3	142.91
PLOT 8	390	3	3	150.67
PLOT 9	390	3	3	150.67
PLOT 10	321.97	3	3	144.29

COVERED VERANDA AREA m ²	TOTAL COVERED AREA m ²	SWIMMING POOL m ²	PARKING & STORAGE ROOM	GARAGE
39	254	4x8	√	√
12.93	123.09	3x6	√	√
33.63	180.92	3x6	√	√
40.23	187.52	3x6	√	√
37.12	164.31	3x6	√	√
14.46	157.37	3x6	√	√
14.46	157.37	3x6	√	√
25.55	176.22	3x6	√	√
25.55	176.22	3x6	√	√
27.20	171.49	3x6	√	√

PROJECT DIMENSIONS



UNIT NUMBER	PLOT SIZE m ²	BEDROOMS	BATHROOMS	COVERED INTERNAL AREA m ²
PLOT 11	287.70	3	3	144.29
PLOT 12	299.01	3	3	152.29
PLOT 13	347.65	3	3	152.29
PLOT 14	370.40	3	3	152.29
PLOT 15	800	5	5	254
PLOT 16	800	5	5	254
PLOT 17	835	3	3	169.08
PLOT 18	511	3	3	169.08
PLOT 19	517	3	3	169.08
PLOT 20	445	3	3	169.08

COVERED VERANDA AREA m ²	TOTAL COVERED AREA m ²	SWIMMING POOL m ²	PARKING & STORAGE ROOM	GARAGE
27.20	171.49	3x6	√	√
29.80	182.09	3x6	√	√
29.80	182.09	3x6	√	√
29.80	182.09	3x6	√	√
55	309	4x8	√	√
55	309	4x8	√	√
22.88	191.96	4x8	√	√
22.88	191.96	4x8	√	√
22.88	191.96	4x8	√	√
22.88	191.96	4x8	√	√



INFINITY
RESIDENCES