

A high-angle photograph of a modern, multi-story apartment building with a swimming pool and lush landscaping. The building features balconies with glass railings and large windows. The pool area is surrounded by a concrete deck, lounge furniture, and several palm trees. The scene is set in a tropical or subtropical environment with dense greenery. Two large white circles are overlaid on the image, one above and one below the text.

:life, limassol

• bbf:

- one of the TOP 3 developers in Cyprus in the premium real estate segment
- more than 260 employees in 5 countries
- projects:
Cyprus, Greece, Canada, Portugal
- full scope of real estate services from project development to property management



• bbf:

- 145 projects - in portfolio
- 2.4 mln. m² - land bank
- 1,21 mln. m² - sellable area
- 3.2 bln. € - total sales value of all developments





● ● life – location



● ● limassol

business capital of Cyprus

international community

developed infrastructure

active cultural live

best 5* hotels

world-class restaurants, bars, nightclubs

a variety of private schools

life, germasogia

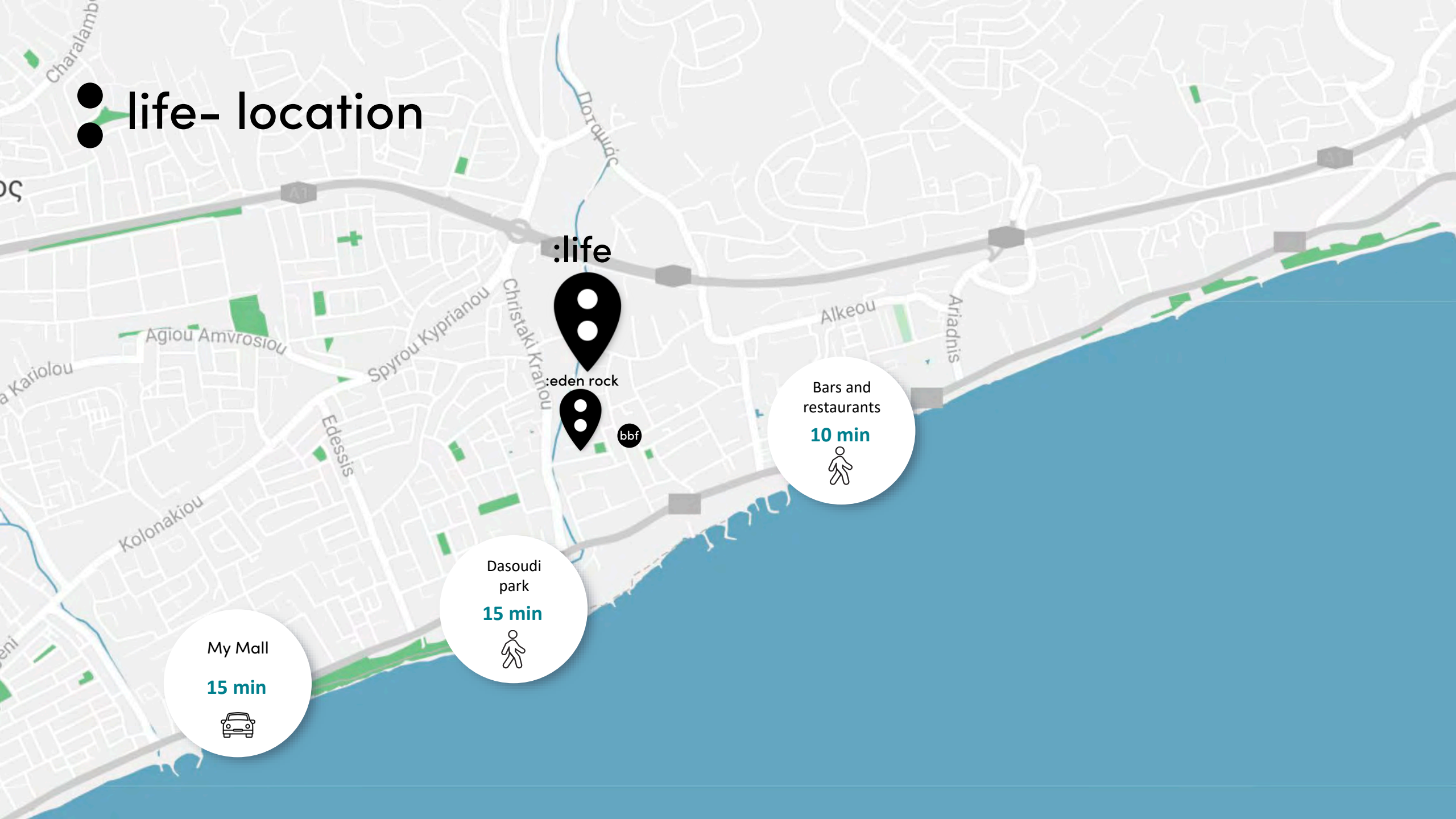


● ● germasogia – limassol tourist area

- highly developed area (infrastructure & public services)
- a large variety of bars, restaurants, 5-star hotels, supermarkets, beauty salons, etc.
- a large variety of sandy beaches
- active business environment
- most popular area for tourists



life- location



:life

eden rock

bbf

Dasoudi park
15 min

Bars and restaurants
10 min

My Mall
15 min



life- location

:life



:eden rock



bbf:

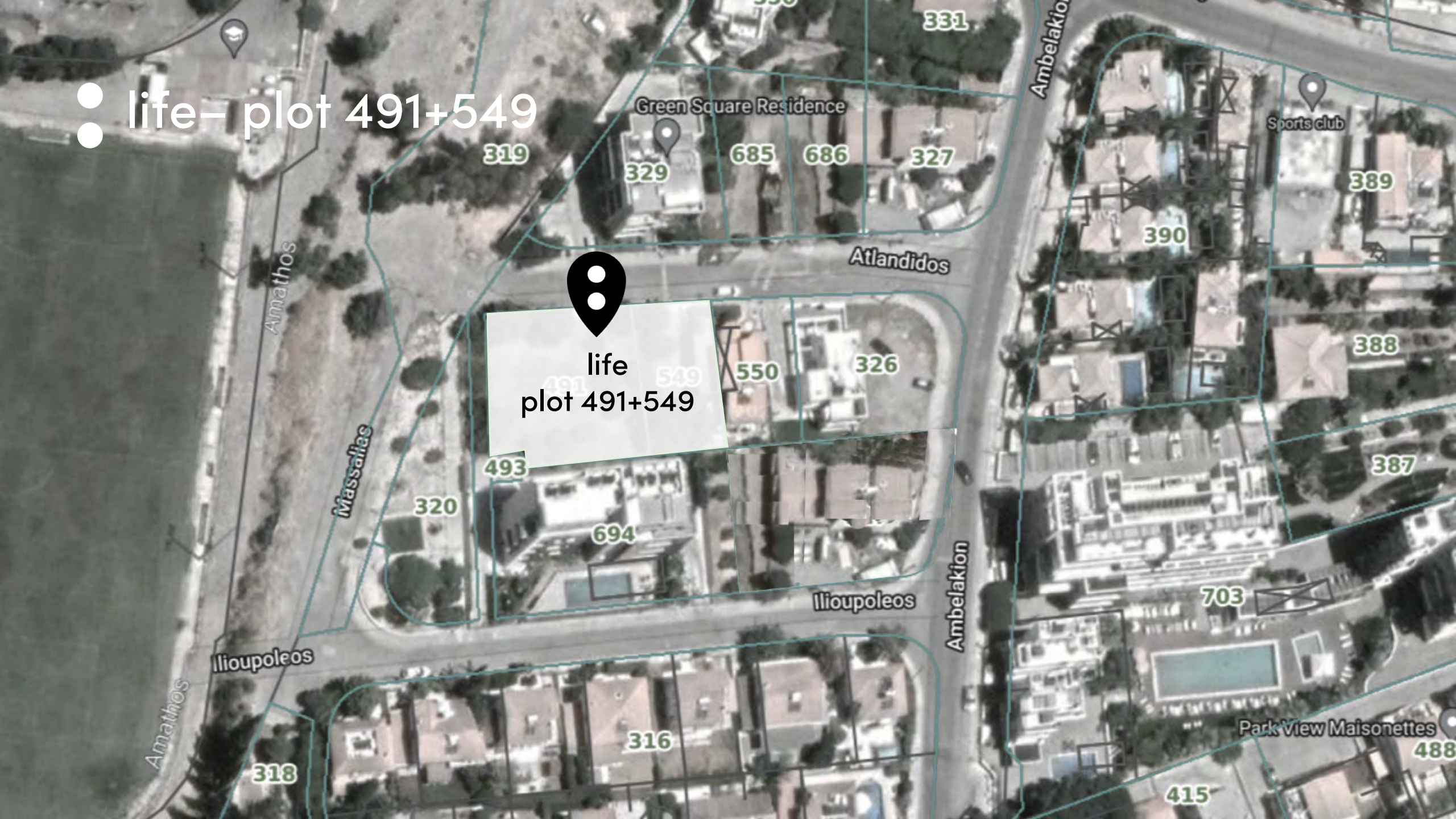
6 MIN.
500 M



● ● life – plot 491+549



life
plot 491+549

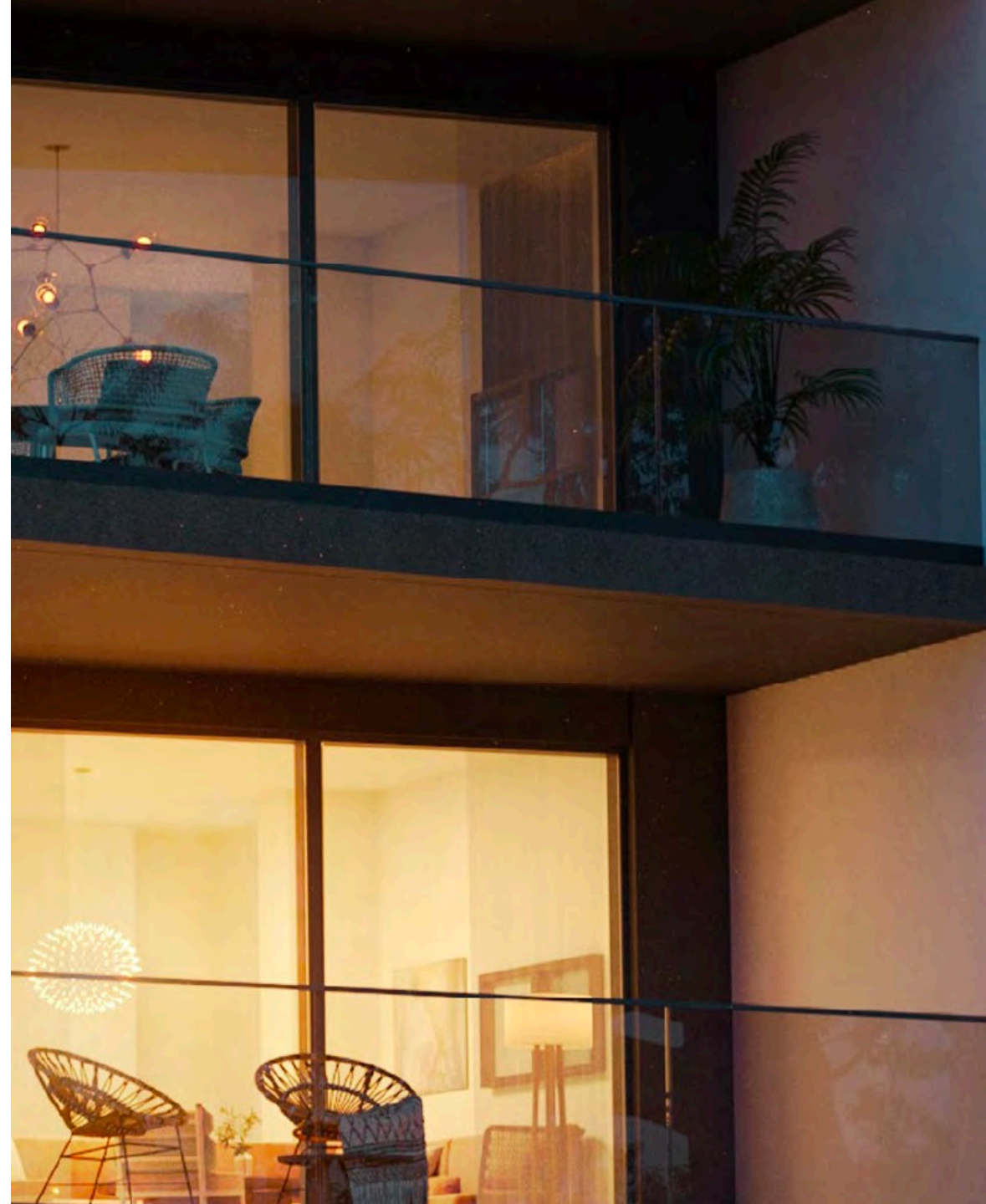




● ● life- description

● ● bbf: life

- plot area 1 111 m²
- sellable area 1 638 m²
- covered verandas 330 m²
- 14 units
- 17 parking slots





● ● life– project concept

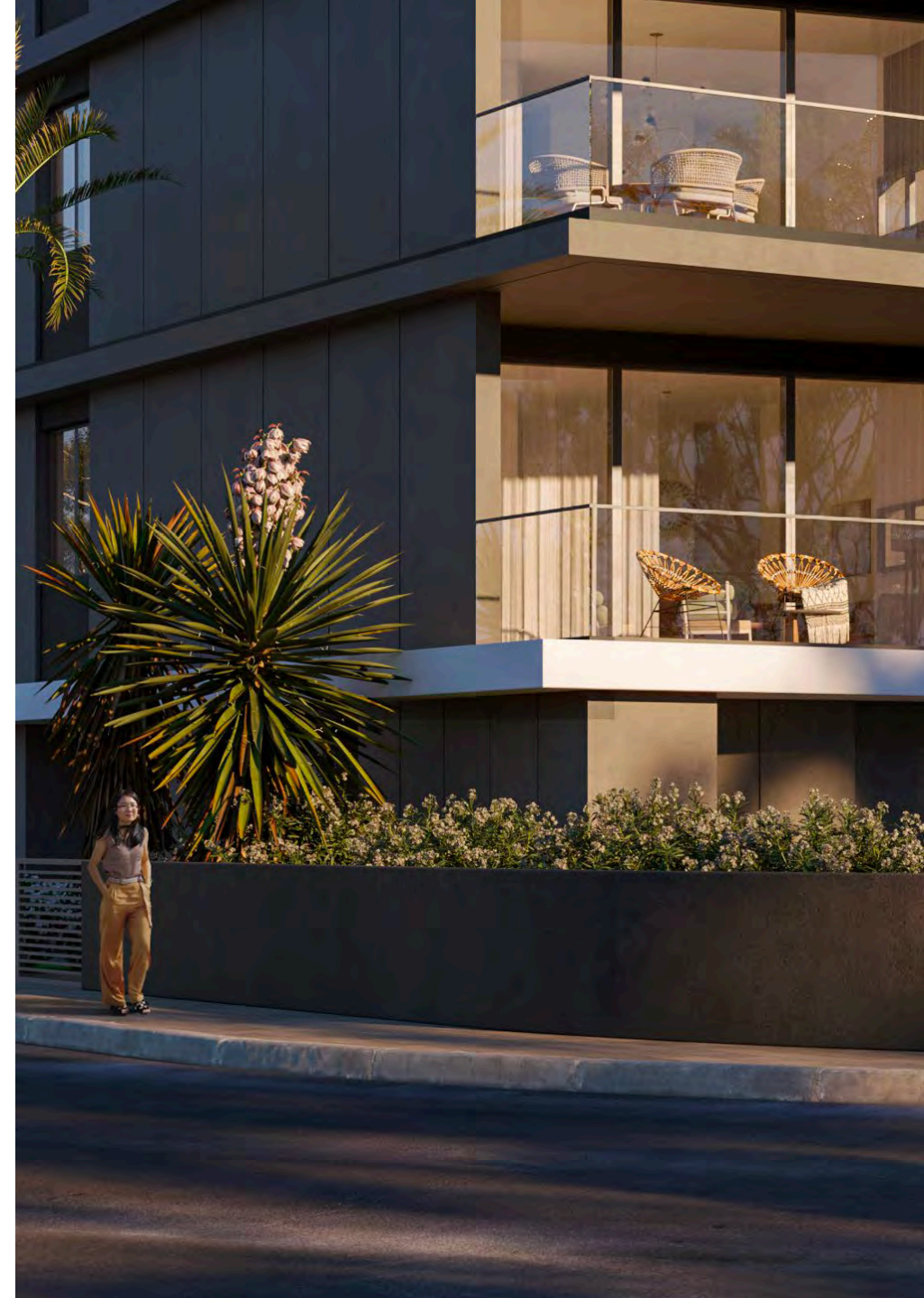
small exclusive project in the busy tourist area of Limassol, which combines walking distance to the main attractions and services of the city, together with privacy and hi-end comfort of living

draft area list

| FLOOR | UNIT NO | PROPERTY TYPE or USE | NO OF BED-ROOMS | NO OF BATH-ROOMS | PRIV S.P. | % OF NO OF PARK COMMON SPACES FLOOR | AREA PER | 1 | 2 | 3 | 4 | 5 | 6 | 7 | 8 | |
|--------------------------|---------|----------------------|-----------------|------------------|-----------|-------------------------------------|----------|-------------------------------|-----------------|-------------------------------|-----------------------|-------------------|---------|----------------------|------------------------|--------|
| | | | | | | | | Private Interior (Gross area) | Covered Veranda | Sellable Auxiliary Floor Area | Sellable Area (1+2+3) | Uncovered Veranda | Storage | Common area per unit | TOTAL AREA (4+5...+11) | |
| 1st | A101 | Apartment | 1 | 1 | | 1 | 4.58% | 61.70 | 13.24 | | | | 1.97 | 20.27 | 97.18 | |
| | A102 | Apartment | 2 | 2 | | 1 | 7.89% | 95.30 | 34.00 | | | | 2.70 | 34.97 | 166.97 | |
| | A103 | Apartment | 2 | 2 | | 1 | 6.98% | 91.04 | 23.26 | | | | 2.23 | 30.92 | 147.45 | |
| | A104 | Apartment | 1 | 1 | | 1 | 4.46% | 56.40 | 16.59 | | | | 2.02 | 19.74 | 94.75 | |
| 2nd | A201 | Apartment | 1 | 1 | | 1 | 4.58% | 61.70 | 13.24 | | | | 2.63 | 20.27 | 97.84 | |
| | A202 | Apartment | 2 | 2 | | 1 | 7.89% | 95.30 | 34.00 | | | | 2.61 | 34.97 | 166.88 | |
| | A203 | Apartment | 2 | 2 | | 1 | 7.14% | 93.70 | 23.20 | | | | 2.69 | 31.62 | 151.21 | |
| | A204 | Apartment | 2 | 2 | | 1 | 6.07% | 82.89 | 16.59 | | | | 2.36 | 26.91 | 128.75 | |
| 3rd | A301 | Studio | Studio | 1 | | 1 | 3.52% | 46.80 | 10.90 | | | | 2.03 | 15.61 | 75.34 | |
| | A302 | Apartment | 3 | 2 | | 1 | 8.95% | 112.60 | 34.00 | | | | 3.00 | 39.65 | 189.25 | |
| | A303 | Apartment | 2 | 2 | | 1 | 7.14% | 93.70 | 23.25 | | | | 3.79 | 31.63 | 152.37 | |
| | A304 | Apartment | 2 | 2 | | 1 | 6.07% | 82.89 | 16.59 | | | | 2.36 | 26.91 | 128.75 | |
| 4th | A401 | Penthouse | 3 | 3 | YES | 1 | 12.17% | 124.20 | 34.01 | 5th | 41.06 | 199.27 | 103.87 | 3.11 | 53.90 | 360.15 |
| | A402 | Penthouse | 3 | 3 | YES | 1 | 12.57% | 125.11 | 37.43 | 5th | 43.33 | 205.87 | 98.43 | 4.04 | 55.69 | 364.03 |
| Total Residential | | | | | | 14 | | 1,223.33 | 330.30 | | 84.39 | 1,638.02 | | 443m2 | 2,321m2 | |

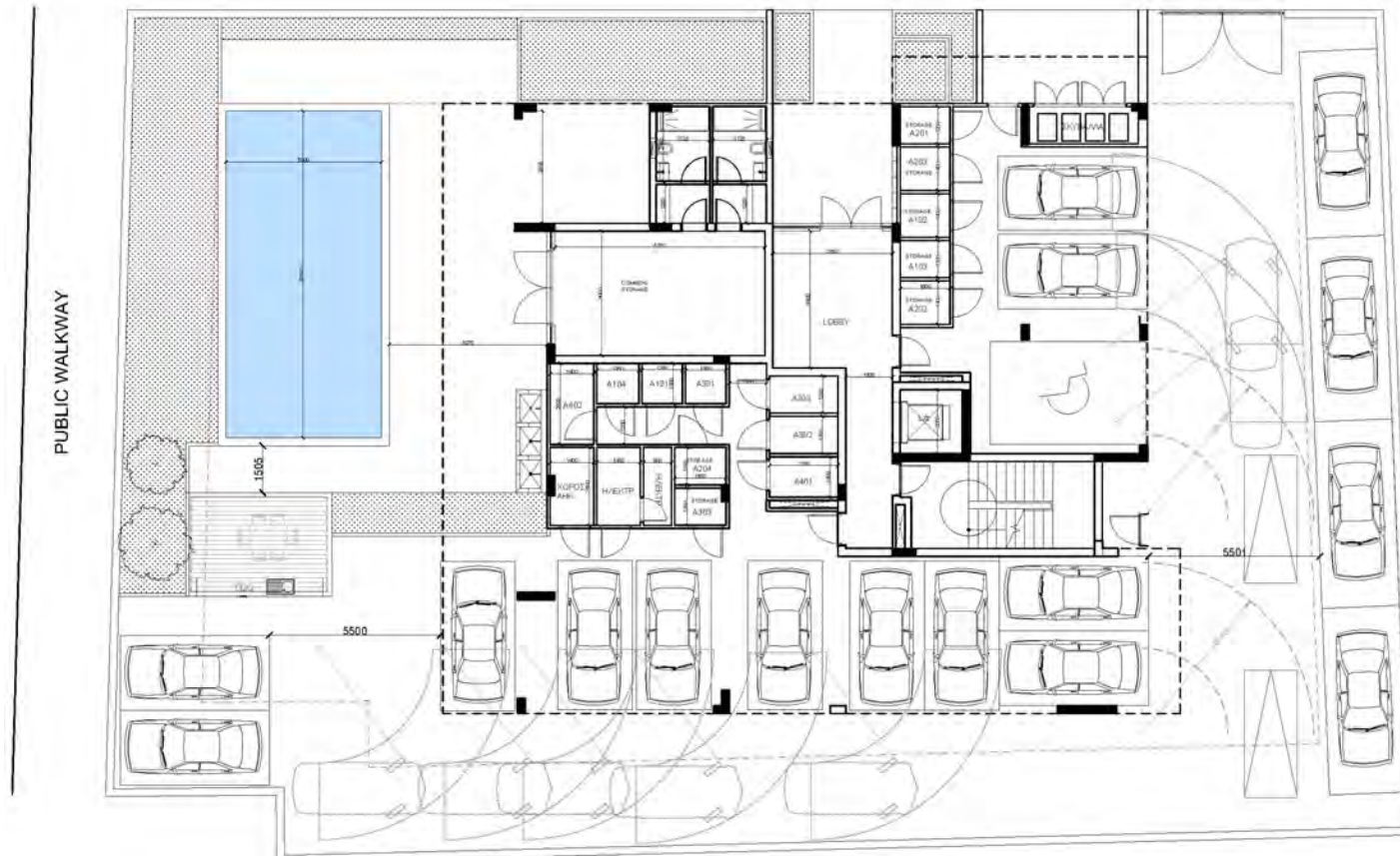
amenities & facilities

- common swimming pool
- photovoltaic panels
- gym
- spa



● floor plans

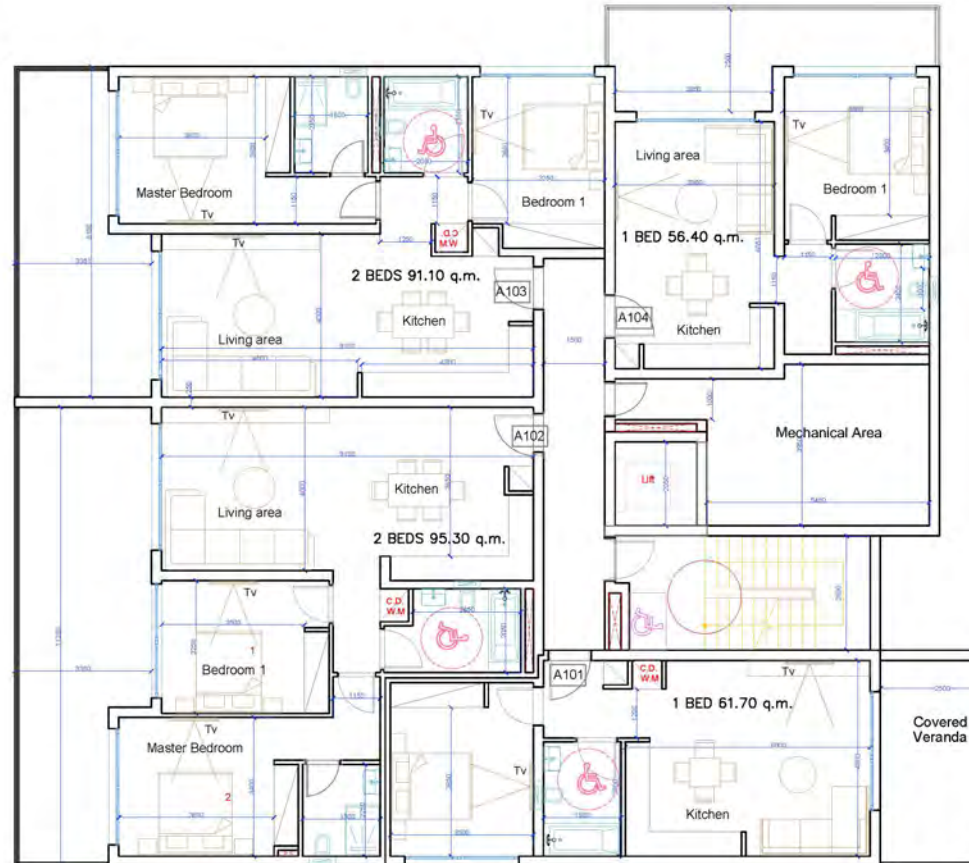
ground floor



● floor plans

1st floor

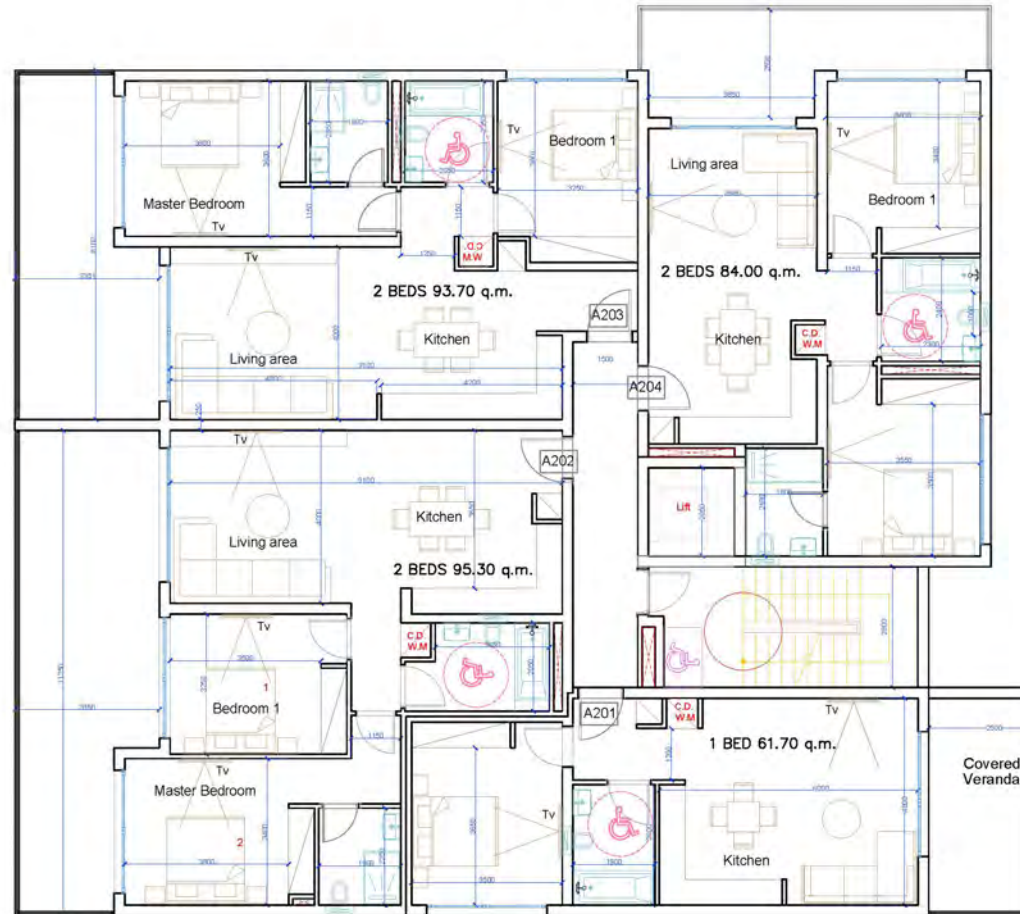
| UNIT NO | Sellable Area |
|---------|---------------|
| A101 | 74.90 |
| A102 | 129.30 |
| A103 | 114.30 |
| A104 | 72.90 |



● floor plans

2nd floor

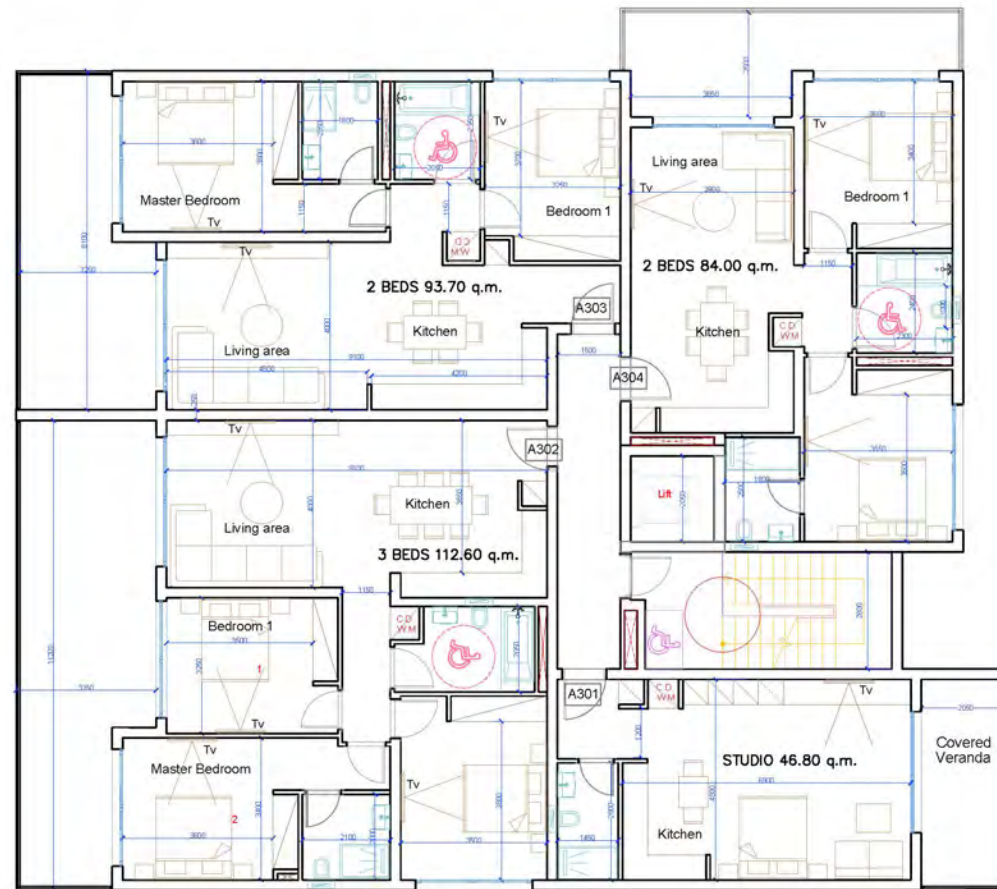
| UNIT NO | Sellable Area |
|---------|---------------|
| A201 | 74.90 |
| A202 | 129.30 |
| A203 | 116.90 |
| A204 | 100.70 |



● floor plans

3rd floor

| UNIT NO | Sellable Area |
|---------|---------------|
| A301 | 57.70 |
| A302 | 146.60 |
| A303 | 116.90 |
| A304 | 100.50 |



● floor plans

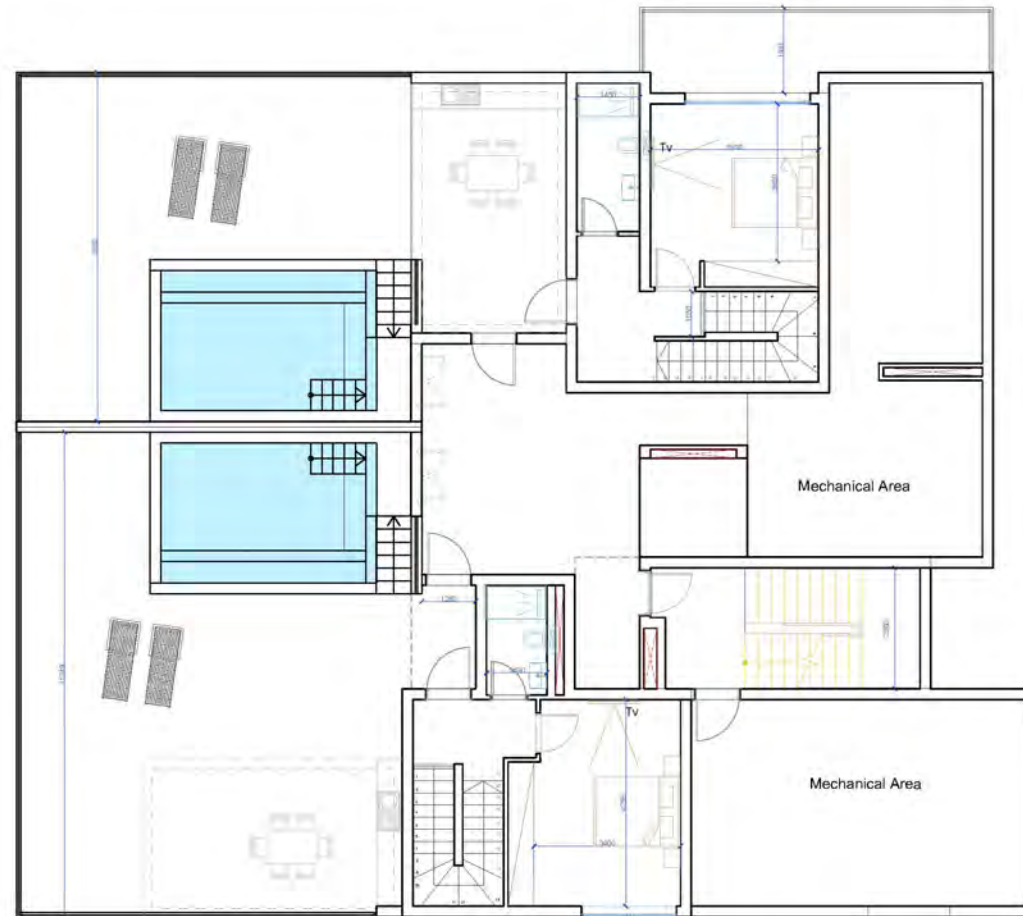
4th floor

| UNIT NO | Sellable Area |
|---------|---------------|
| A401 | 199.72 |
| A402 | 205.72 |



● floor plans

roof gardens





bbf: life finishes

- fully completed finishes
- parquet floors in living areas and bedrooms
- marble in the toilets and bathrooms
- hanging, concealed WC & built-in showers
- underfloor central heating
- concealed A/C units in all areas
- high-standard sanitary ware from European brands
- thermal aluminum window frames with double glazing
- high-standard kitchen cabinets & wardrobes from European brands
- living area ceiling height 3.10m

bbf:



build. better. future.

bbf®

HEADQUARTERS

Limassol Ambelakion 28 Street,
P. Germasogeia 4046 Limassol,
Cyprus

info@bbf.com

+357(25)-315-300

bbf.com

ATHENS-BEIJING-MOSCOW-ST. PETERSBURG-DUBAI
LIMASSOL-LARNACA-PAPHOS-NICOSIA

