



:heart



●● about us

one of the TOP 3 developers in Cyprus in the premium real estate segment

more than 300 employees in 5 countries

projects: Cyprus, Greece, Canada

full scope of real estate services from project development to property management





● about us

145+ projects
in portfolio

2.4 mln. m²
land bank

1.21 mln. m²
sellable area

3.2 bln. €
total sales value of
all developments

● ● Limassol – location

business capital of Cyprus

international community

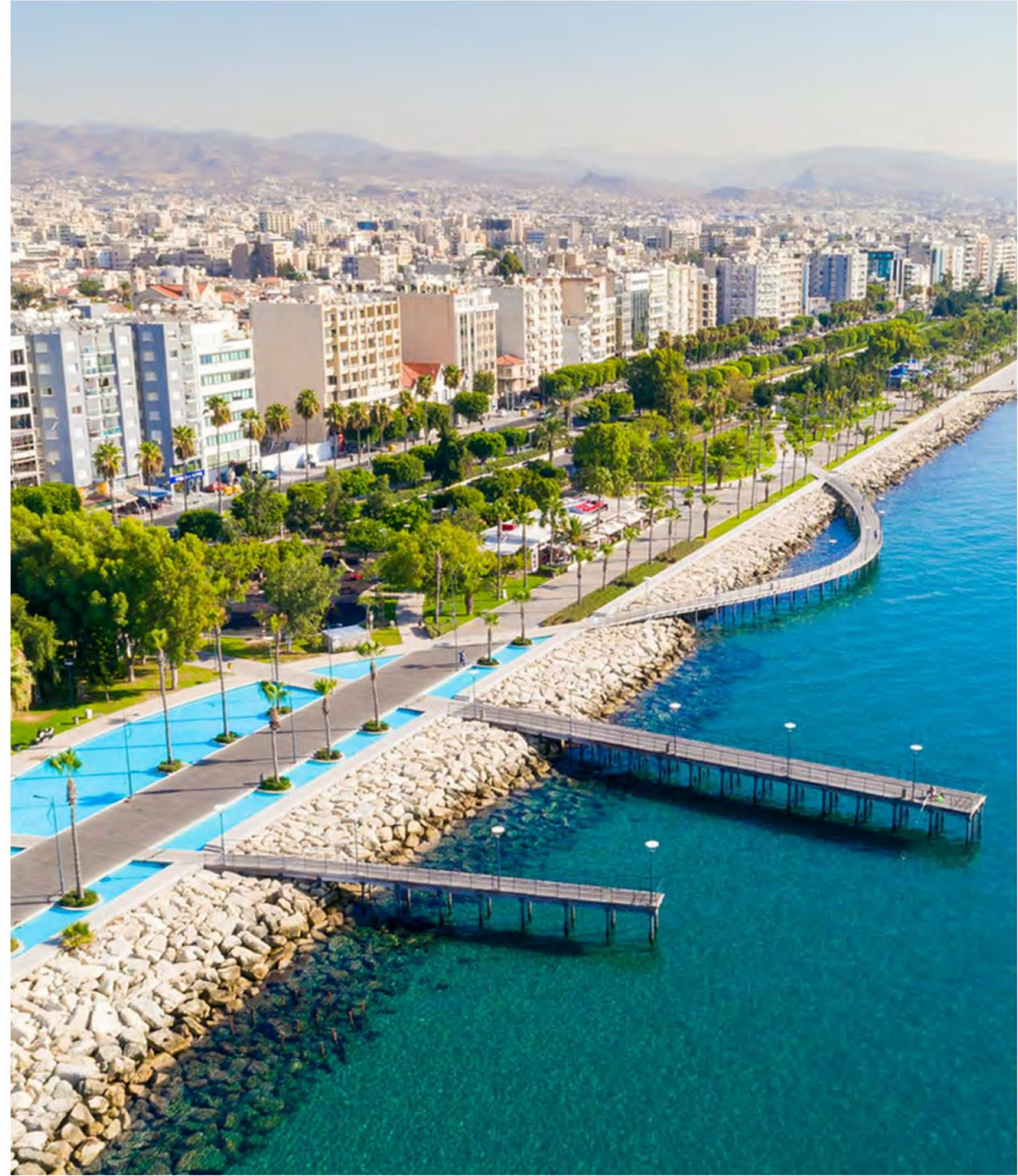
developed infrastructure

active cultural life

best 5* hotels

world-class restaurants, bars, nightclubs

a variety of private schools



heart - location



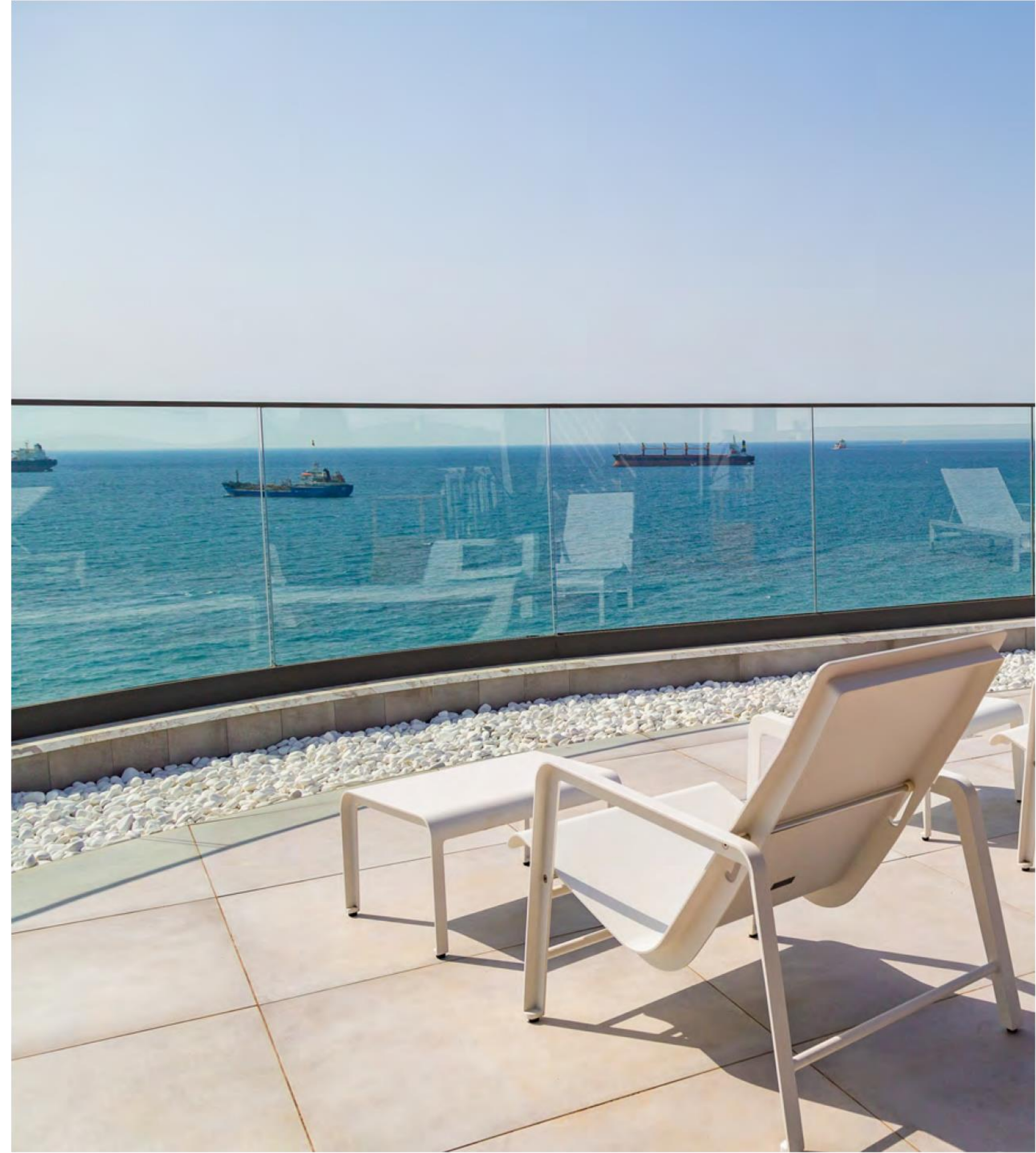
● ● heart - location

this commercial development is located in the heart of Limassol, on the first line by the sea in the famous Molos area.

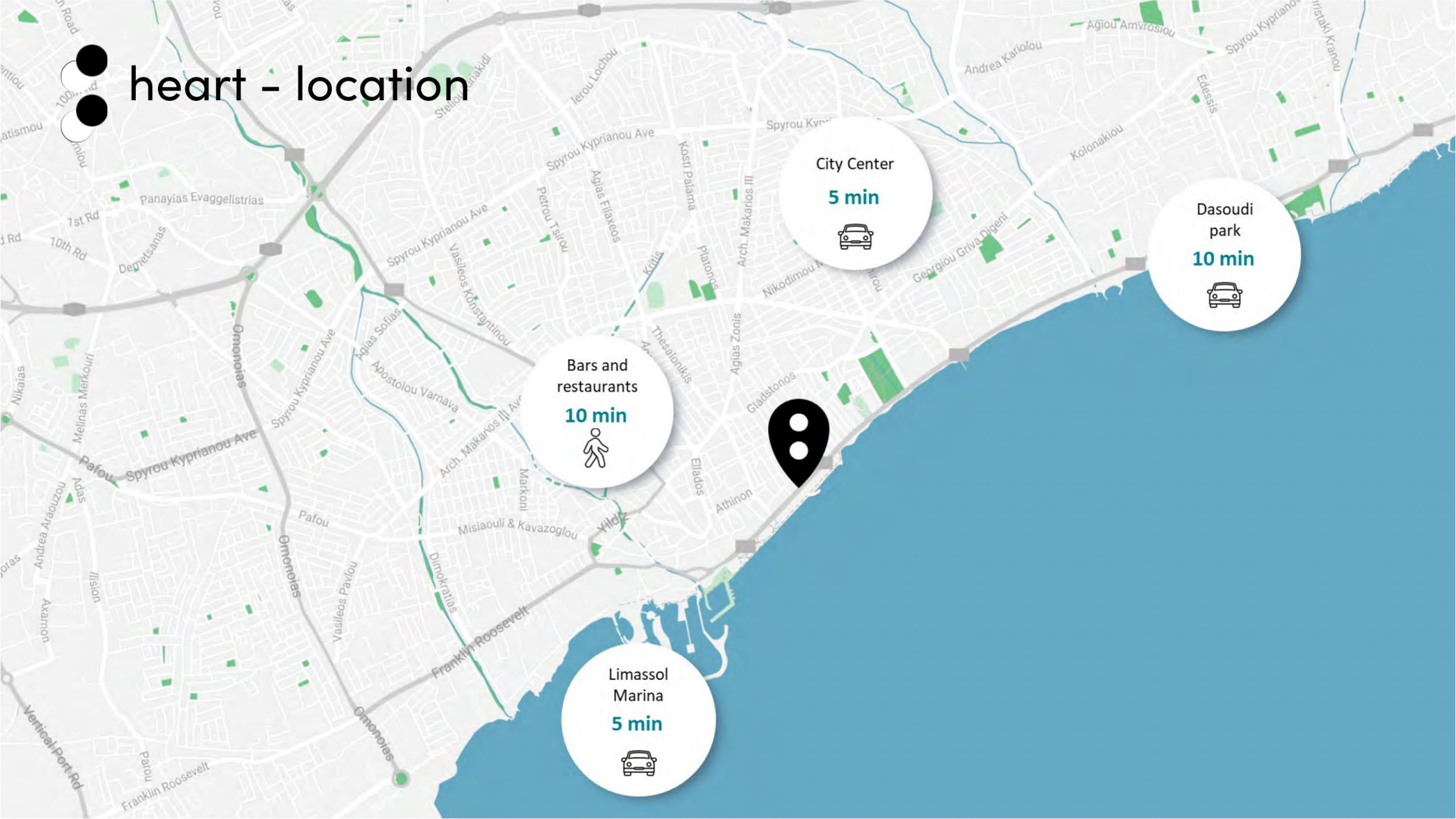
moments away from the city center and other significant related infrastructures such as the Limassol Marina, prestigious business centers, and high-class restaurants, its location is ideal for business professionals with a busy schedule.


Key location features□


- near the historical center of Limasso□
- opposite the sea – uninterrupted sea view□
- 800 meters away from Limassol Marina




heart - location



City Center
5 min


Dasoudi park
10 min


Bars and restaurants
10 min


Limassol Marina
5 min


● ● heart – location



● ● heart – commercial specifications

class A building

6 floors

8 office spaces / 1 shop with mezzanine

34 private parking spaces

GBA 3,711 m²

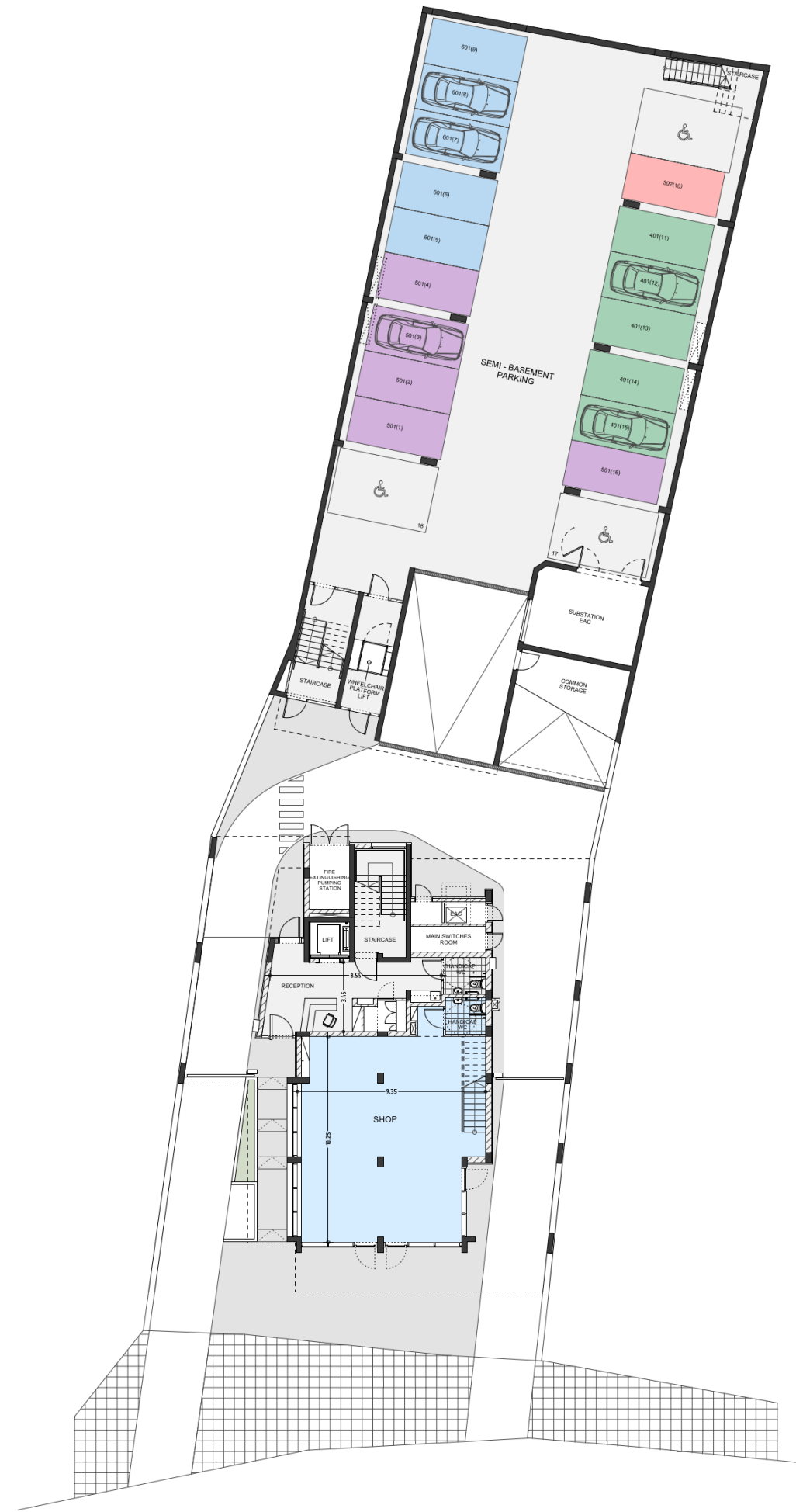
sellable area 2,695 m²



heart - area list

F L	UNIT NO	PROPERTY TYPE or USE	AREA (m2)					
			Private Interior (Gross area)	Covered Veranda	Sellable Auxiliary		Sellable Area	TOTAL AREA
					Floor	Area		
GF	A001	Shop	109,00		Mezanine	70,95	179,95	179,95
1st	A101	Office	139,05	10,15			149,20	149,20
	A102	Office	164,70	29,10			193,80	193,80
2nd	A201	Office	139,05	10,15			149,20	149,20
	A202	Office	164,70	29,10			193,80	193,80
3rd	A301	Office	303,50	39,80			343,30	343,30
4th	A401	Office	303,50	39,80			343,30	343,30
5th	A501	Office	303,50	39,80			343,30	343,30
6th	A601	Office	303,50	39,80	7th	85,60	428,90	428,90
TOTAL OFFICE BUILDING			1 930,50	237,70		156,55	2 324,75	2 325m2

● ● heart – ground floor & mezzanine

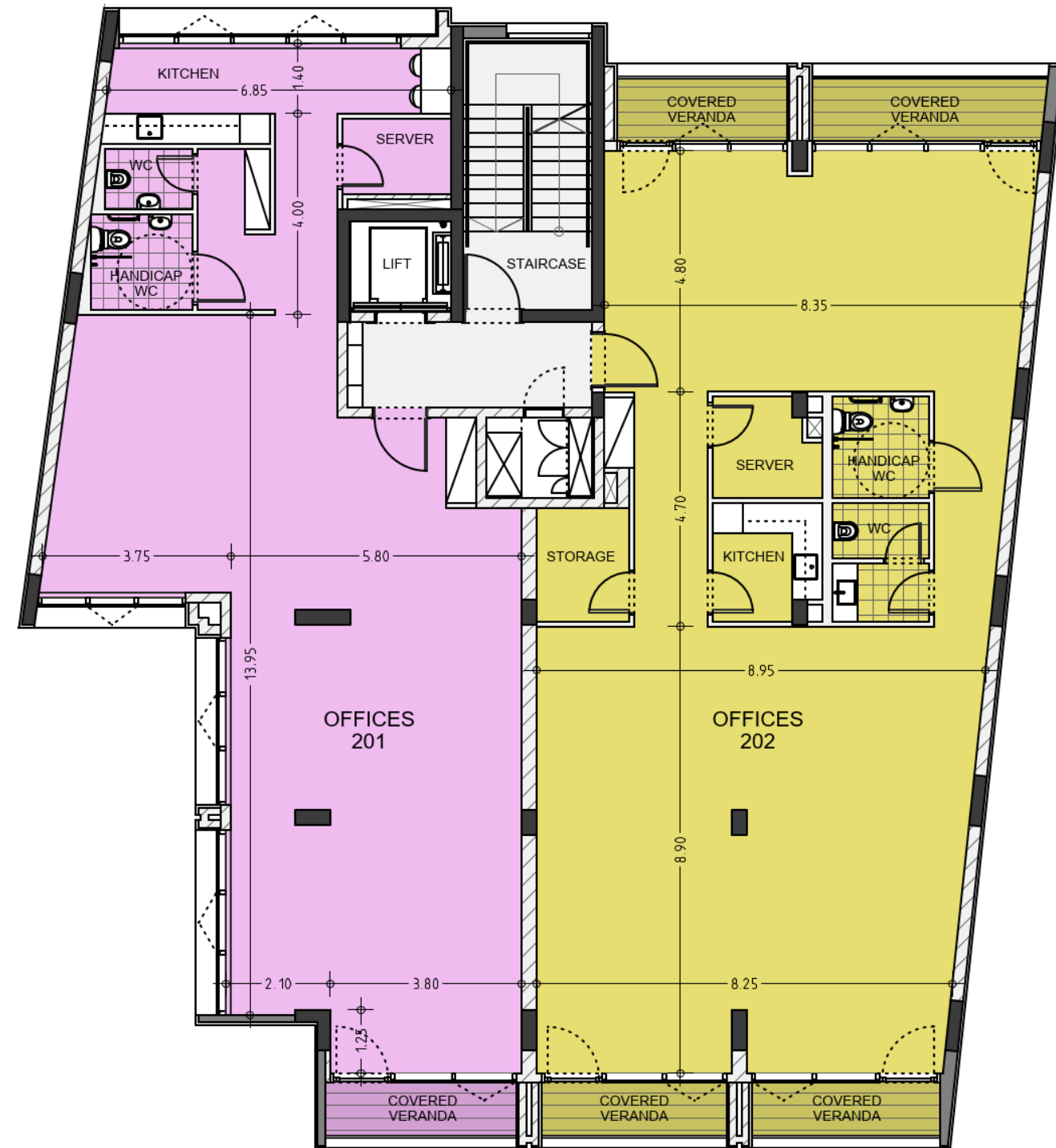


ground floor

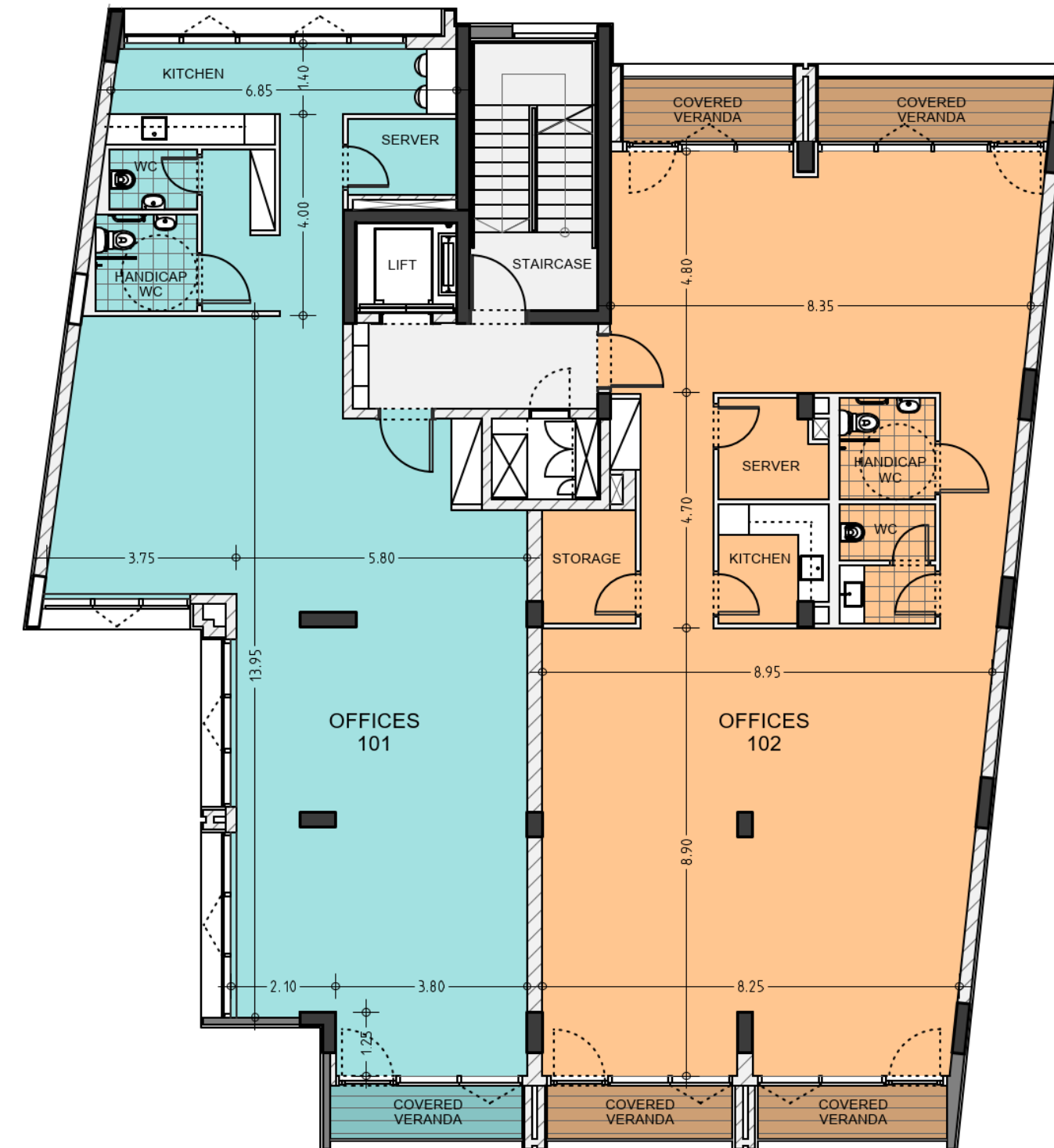


mezzanine

● heart – 1st & 2nd floor plans

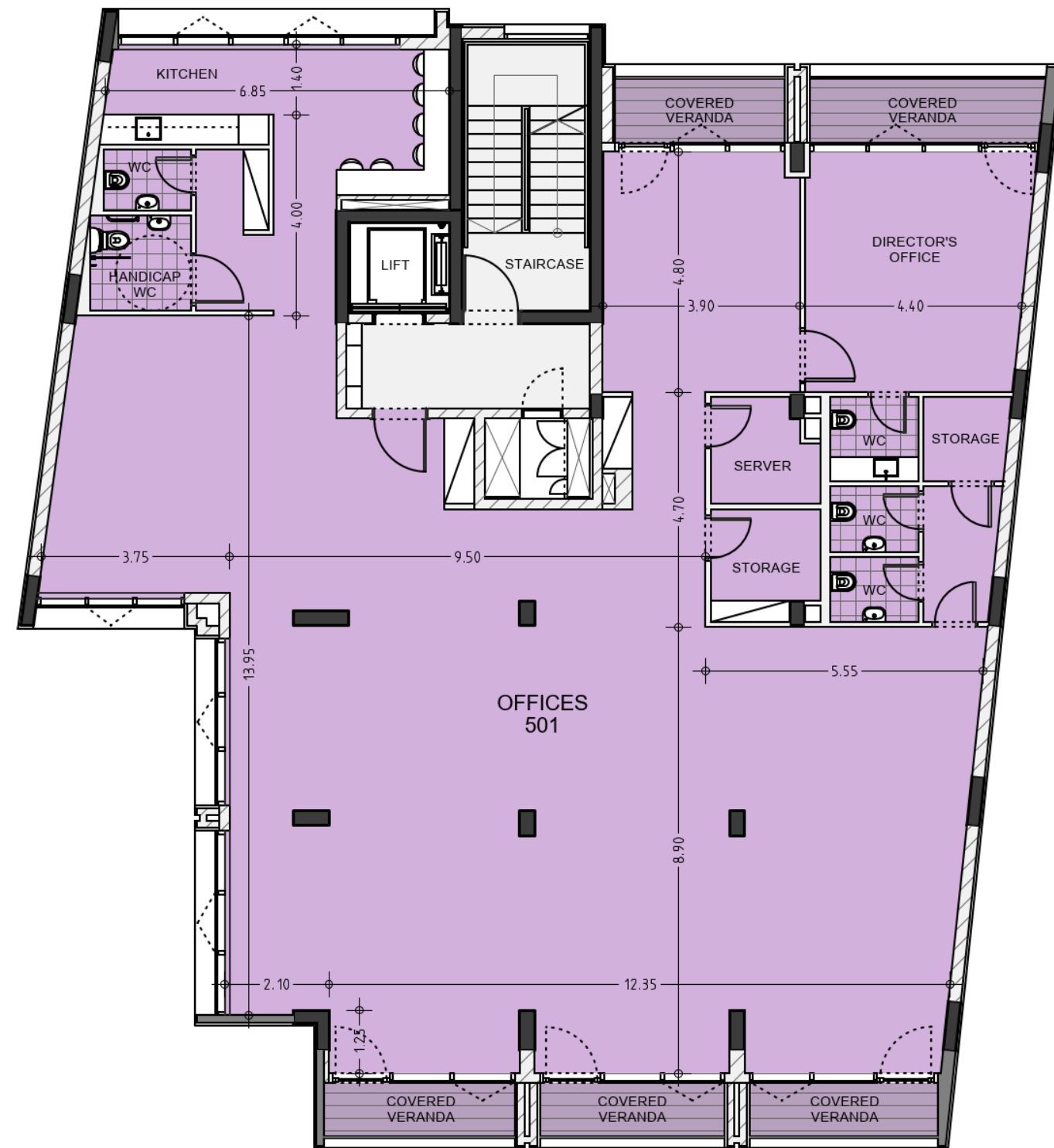


1st floor

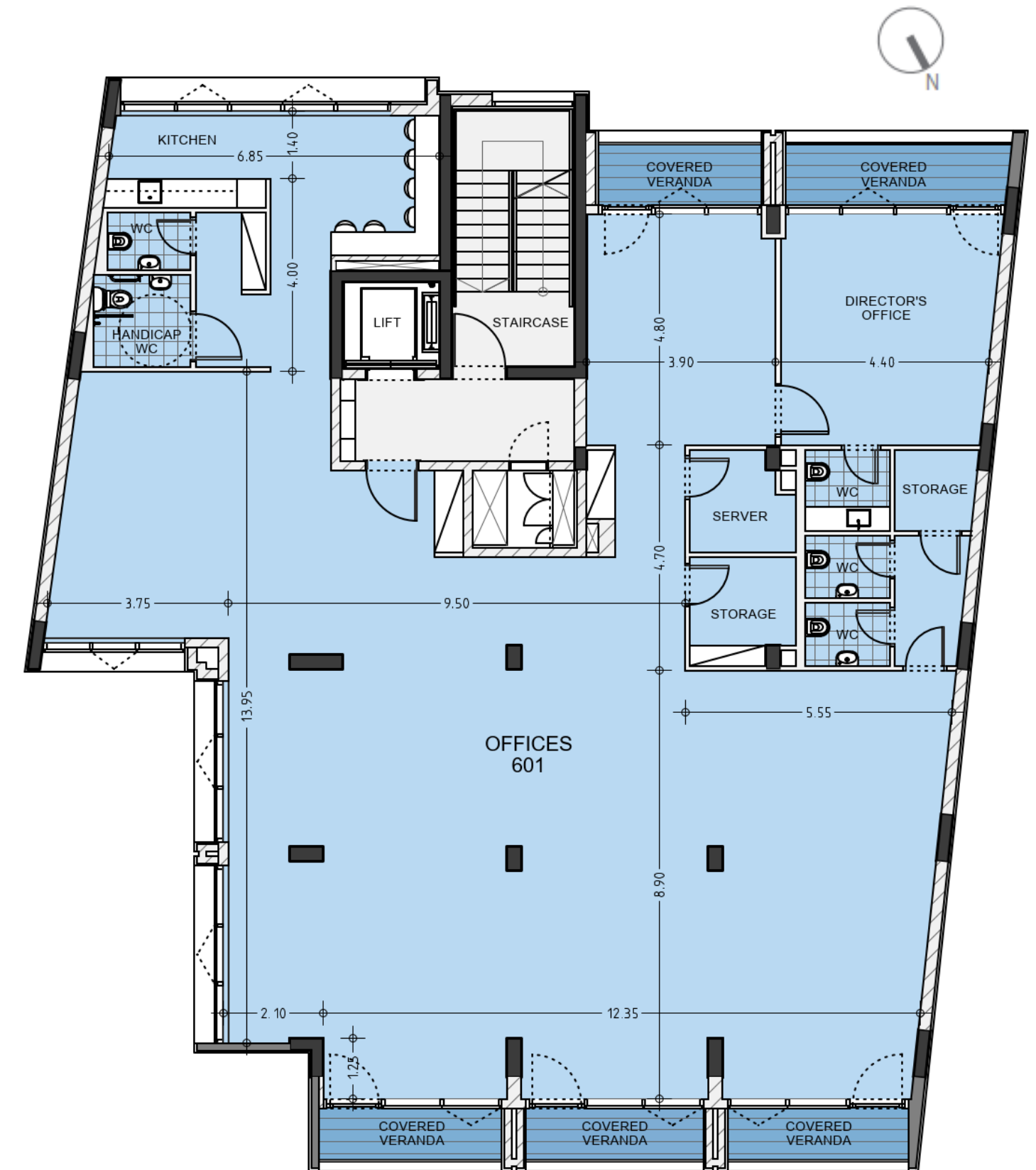


2nd floor

● ● heart – 5th & 6th floor plans

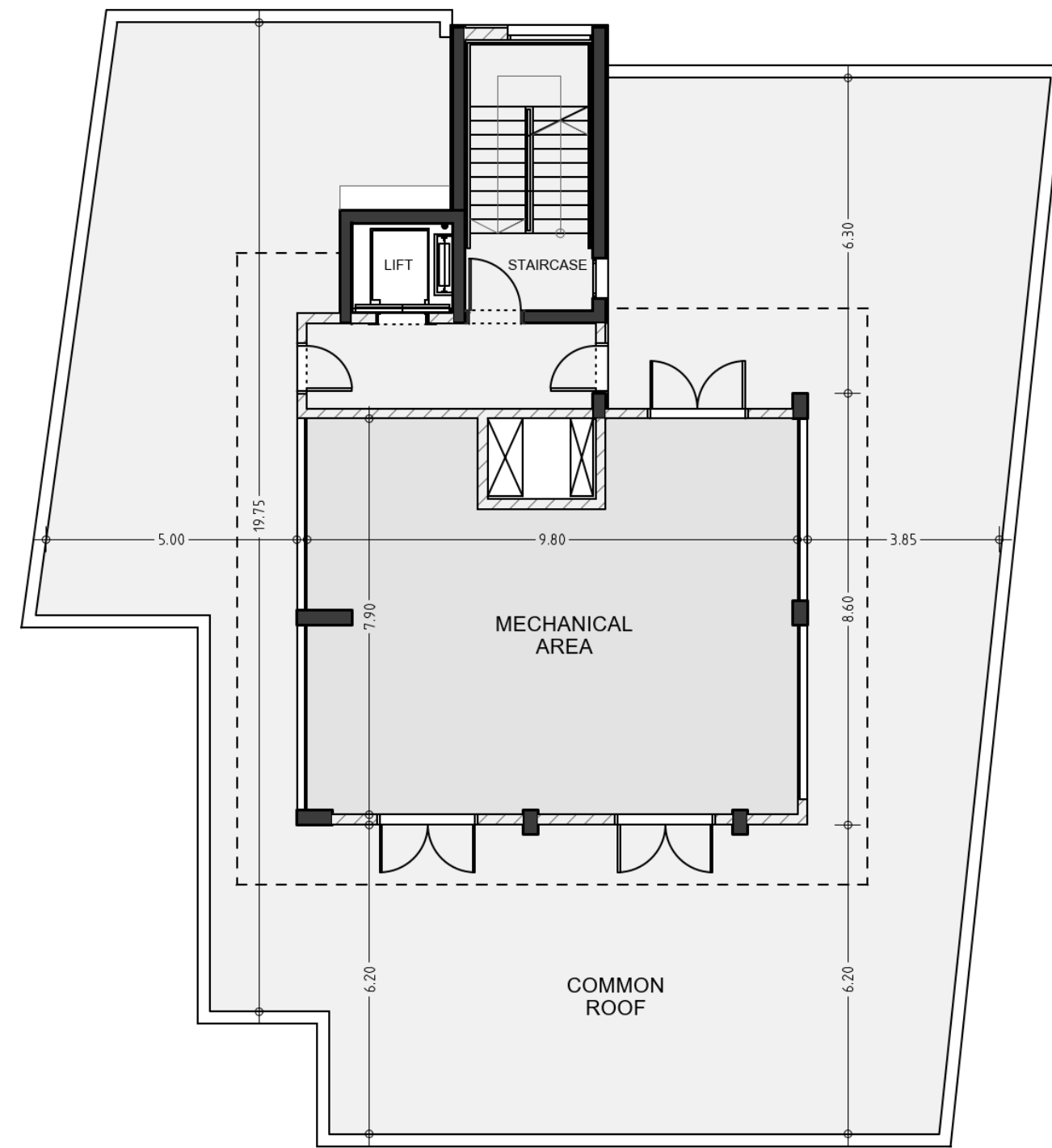


5th floor



6th floor

● ● heart – roof floor plan



roof floor



build. better. future.



bbf®
HEADQUARTERS
Limassol Ambelakion 28 Street,^[L]_[SEP]
P. Germasogeia 4046 Limassol,^[L]_[SEP]
Cyprus
info@bbf.com^[L]_[SEP]
+357(25)-315-300

bbf.com