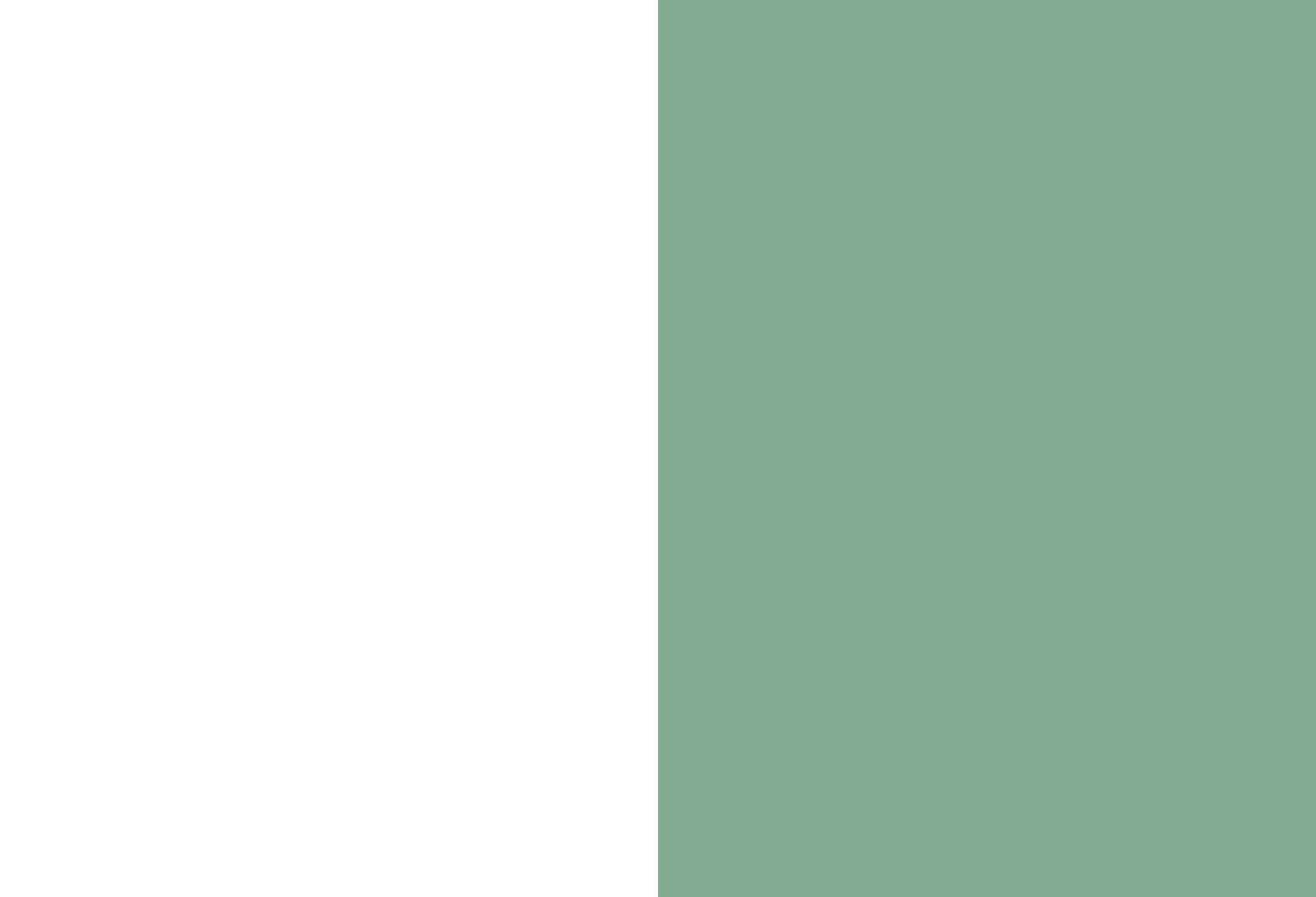


SALT LAKE RESIDENCES





salt lake residences

**A beautifully
balanced
community
of residences
and villas**

Set in the peaceful and fast-growing area of Asomatos, Limassol, Salt Lake Residences brings together contemporary apartments and boutique private villas to form a thoughtfully planned residential neighbourhood. Surrounded by greenery and moments from the coastline, the project offers a refined Mediterranean lifestyle where comfort, privacy and wellbeing come naturally.



**A neighbourhood
designed for
living well**

Tree-lined pathways, landscaped courtyards and calming communal spaces create an atmosphere that feels intimate and connected. Whether relaxing by the pool, practising yoga outdoors, or watching children play safely, residents enjoy a lifestyle that blends nature, leisure and modern convenience.



major benefits

- mix of apartments and villas for diverse buyer profiles
- resort-style amenities in a private gated community
- low-rise, nature-integrated masterplan

- high demand micro-location near major attractions
- strong rental and resale potential
- modern finishes and long-lasting materials



contemporary residences

blocks E, F & G

Salt Lake Residences features 54 residences across Blocks E, F & G, offering a selection of studios and one-bedroom homes designed for effortless everyday living.

Ideal for homeowners, young professionals, and investors seeking strong value in a developing residential district.

Each residence includes:

- smart layouts with bright interiors
- generous covered verandas
- high-quality finishes and modern specifications
- private parking
- access to all community amenities



villas:

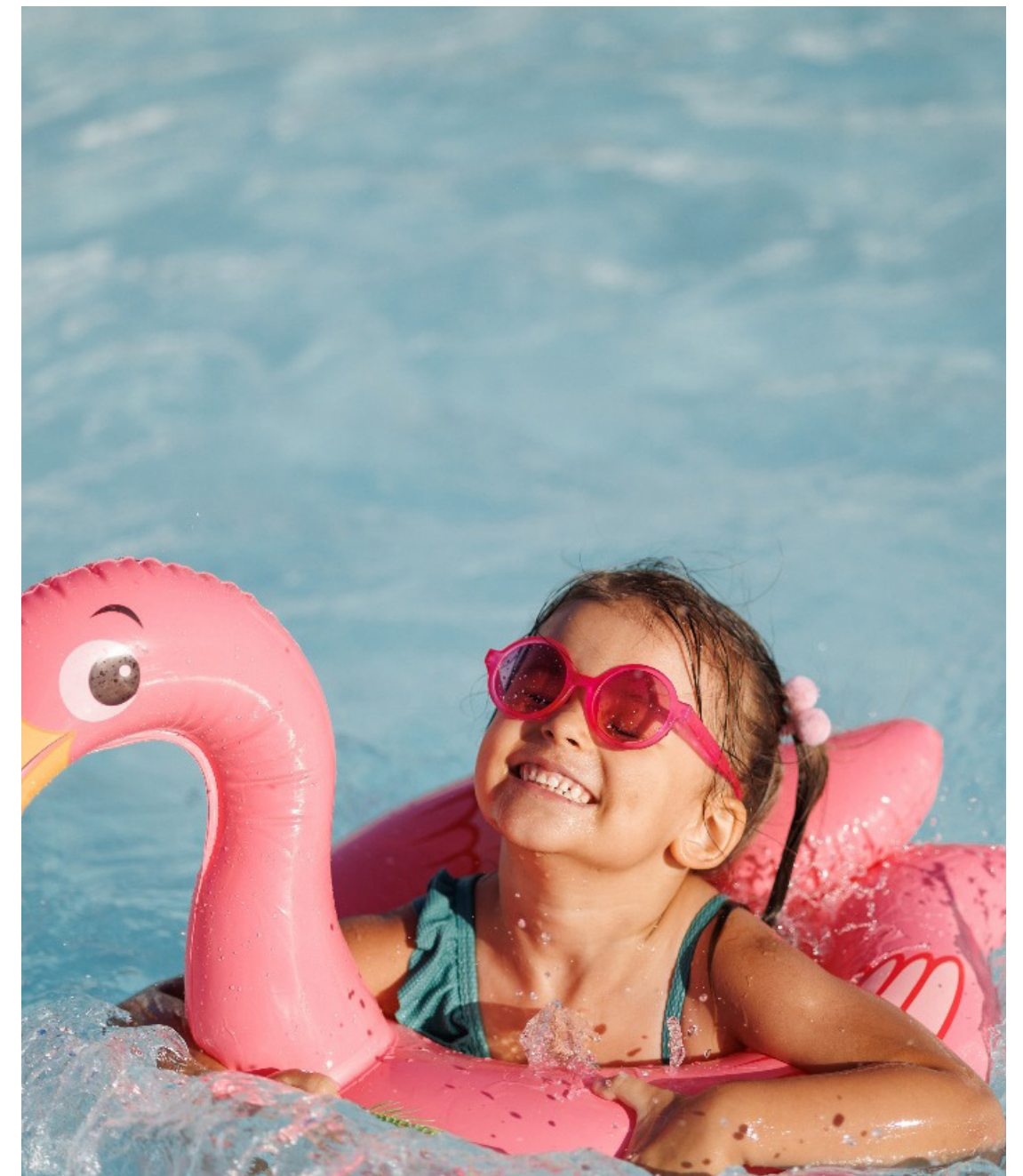
boutique living with privacy and elegance

At the heart of the community lies a collection of 25 private villas, designed for those who want the space of a home with the benefits of a master-planned neighbourhood.

These villas feature contemporary Mediterranean architecture, warm natural tones, and layouts designed for privacy, comfort and indoor-outdoor living

Villa offering includes:

- 21 Type A villas with two bedrooms, three bathrooms and optional additional room
- 4 Type B villas with two bedrooms and two bathrooms
- private indoor areas of approx. 104–105 m²
- covered verandas and private outdoor space
- dedicated parking
- **optional private swimming pools** for selected villas



location

Limassol | Dubbed the headquartering mecca for international businesses and known as a luxurious resort in the Mediterranean, Limassol has it all. Situated on the southern coast of the island of Cyprus, the city offers ample investment and employment opportunities and elite entertainment options setting an ideal backdrop for a balanced lifestyle promising a flourishing career trajectory and fun-filled days and nights. A warm climate, a rich cultural heritage, fine dining, award winning spas, world-class bars and clubs, await you.



A location with convenience and growth

Asomatos offers a rare balance – peaceful suburban surroundings just minutes from key Limassol destinations:

- Lady's Mile beach – 5 minutes
- Casino resort – 5 minutes
- Limassol Marina – 10 minutes
- Golf courses – 3 minutes
- Private schools – 20 minutes
- Highways and major road links nearby

This positioning supports both long-term lifestyle value and strong investment appeal.



exterior

**resort-style amenities
in a private gated community**



exterior

**landscaped playgrounds
and recreational spaces**



exterior

**modern finishes and
long-lasting materials**



lifestyle amenities shared across the community



Salt Lake Residences enhances daily life with a curated selection of facilities, including:

- large outdoor swimming pool with relaxation deck
- gym, sauna and steam room
- outdoor yoga deck surrounded by greenery
- landscaped playgrounds and recreational spaces
- secure internal private road network
- gated and calm residential environment



choice of properties

apartments

block E

FLOOR	UNIT N°	PROPERTY TYPE	BED ROOMS	BATH ROOMS	PARK SPACES	% OF COMMON AREA PER FLOOR	PRIVATE INTERIOR	COVERED VERANDA	SELLABLE AREA	COMMON AREA PER UNIT	TOTAL AREA
1st	E101	Apartment	1	1	1	6%	55.17	10.90	66.07	7.15	66.07
1st	E102	Apartment	1	1	1	6%	54.50	10.92	65.42	14.39	65.42
1st	E103	Apartment	1	1	1	6%	54.10	10.92	65.02	9.73	65.02
1st	E104	Apartment	1	1	1	6%	51.85	10.92	62.77	9.21	62.77
1st	E105	Studio		1	1	4%	35.77	9.65	45.42	7.26	45.42
1st	E106	Studio		1	1	4%	35.77	9.43	45.20	9.21	45.20
1st	E107	Apartment	1	1	1	6%	52.05	12.35	64.40	9.75	64.40
1st	E108	Apartment	1	1	1	6%	54.00	12.35	66.35	9.73	66.35
1st	E109	Studio		1	1	4%	37.80	8.28	46.08	9.33	46.08
2nd	E201	Apartment	1	1	1	6%	55.17	10.90	66.07	7.15	66.07
2nd	E202	Apartment	1	1	1	6%	54.50	10.92	65.42	14.39	65.42
2nd	E203	Apartment	1	1	1	6%	54.10	10.92	65.02	9.73	65.02
2nd	E204	Apartment	1	1	1	6%	51.85	10.92	62.77	9.21	62.77
2nd	E205	Studio		1	1	4%	35.77	9.65	45.42	7.26	45.42
2nd	E206	Studio		1	1	4%	35.77	9.43	45.20	9.21	45.20
2nd	E207	Apartment	1	1	1	6%	52.05	12.35	64.40	9.75	64.40
2nd	E208	Apartment	1	1	1	6%	54.00	12.35	66.35	9.73	66.35
2nd	E209	Studio		1	1	4%	37.80	8.28	46.08	9.33	46.08

block F

FLOOR	UNIT N°	PROPERTY TYPE	BED ROOMS	BATH ROOMS	PARK SPACES	% OF COMMON AREA PER FLOOR	PRIVATE INTERIOR	COVERED VERANDA	SELLABLE AREA	COMMON AREA PER UNIT	TOTAL AREA
1st	F101	Apartment	1	1	1	6%	55.17	10.90	66.07		66.07
1st	F102	Apartment	1	1	1	6%	54.50	10.92	65.42		65.42
1st	F103	Apartment	1	1	1	6%	54.10	10.92	65.02		65.02
1st	F104	Apartment	1	1	1	6%	51.85	10.92	62.77		62.77
1st	F105	Studio		1	1	4%	35.77	9.65	45.42		45.42
1st	F106	Apartment	1	1	1	4%	35.77	9.43	45.20		45.20
1st	F107	Apartment	1	1	1	6%	52.05	12.35	64.40		64.40
1st	F108	Studio		1	1	6%	54.00	12.35	66.35		66.35
1st	F109	Studio		1	1	4%	37.80	8.28	46.08		46.08
2nd	F201	Apartment	1	1	1	6%	55.17	10.90	66.07		66.07
2nd	F202	Apartment	1	1	1	6%	54.50	10.92	65.42		65.42
2nd	F203	Apartment	1	1	1	6%	54.10	10.92	65.02		65.02
2nd	F204	Apartment	1	1	1	6%	51.85	10.92	62.77		62.77
2nd	F205	Studio		1	1	4%	35.77	9.65	45.42		45.42
2nd	F206	Apartment	1	1	1	4%	35.77	9.43	45.20		45.20
2nd	F207	Apartment	1	1	1	6%	52.05	12.35	64.40		64.40
2nd	F208	Studio		1	1	6%	54.00	12.35	66.35		66.35
2nd	F209	Studio		1	1	4%	37.80	8.28	46.08		46.08

block G

FLOOR	UNIT N°	PROPERTY TYPE	BED ROOMS	BATH ROOMS	PARK SPACES	% OF COMMON AREA PER FLOOR	PRIVATE INTERIOR	COVERED VERANDA	SELLABLE AREA	COMMON AREA PER UNIT	TOTAL AREA
1st	G101	Apartment	1	1	1	6%	55.17	10.90	66.07		66.07
1st	G102	Apartment	1	1	1	6%	54.50	10.92	65.42		65.42
1st	G103	Apartment	1	1	1	6%	54.10	10.92	65.02		65.02
1st	G104	Apartment	1	1	1	6%	51.85	10.92	62.77		62.77
1st	G105	Studio		1	1	4%	35.77	9.65	45.42		45.42
1st	G106	Apartment	1	1	1	4%	35.77	9.43	45.20		45.20
1st	G107	Apartment	1	1	1	6%	52.05	12.35	64.40		64.40
1st	G108	Studio		1	1	6%	54.00	12.35	66.35		66.35
1st	G109	Studio		1	1	4%	37.80	8.28	46.08		46.08
2nd	G201	Apartment	1	1	1	6%	55.17	10.90	66.07		66.07
2nd	G202	Apartment	1	1	1	6%	54.50	10.92	65.42		65.42
2nd	G203	Apartment	1	1	1	6%	54.10	10.92	65.02		65.02
2nd	G204	Apartment	1	1	1	6%	51.85	10.92	62.77		62.77
2nd	G205	Studio		1	1	4%	35.77	9.65	45.42		45.42
2nd	G206	Apartment	1	1	1	4%	35.77	9.43	45.20		45.20
2nd	G207	Apartment	1	1	1	6%	52.05	12.35	64.40		64.40
2nd	G208	Studio		1	1	6%	54.00	12.35	66.35		66.35
2nd	G209	Studio		1	1	4%	37.80	8.28	46.08		46.08

NOTE: the areas stated above may slightly differ upon issuance of relevant authority permits

choice of properties

villas

UNIT N°	PROPERTY TYPE	BED ROOMS	BATH ROOMS	PARK SPACES	PRIVATE POOL	PRIVATE INTERIOR	COVERED VERANDA	UNCOVERED VERANDA	GARAGE AREA	PLOT AREA	TOTAL AREA
1	House	2	3	1		104.75	9.00	8.15	15.50	165.10	137.40
2	House	2	3	1		104.75	9.00	8.15	15.50	162.00	137.40
3	House	2	3	1		104.75	9.00	8.15	15.50	162.00	137.40
4	House	2	3	1		104.75	9.00	8.15	15.50	162.00	137.40
5	House	2	3	1		104.75	9.00	8.15	15.50	185.35	137.40
6	House	2	2	1		105.20	9.60	9.50	16.00	178.60	140.30
7	House	2	2	1		105.20	9.60	9.50	16.00	175.50	140.30
8	House	2	2	1		105.20	9.60	9.50	16.00	175.50	140.30
9	House	2	2	1		105.20	9.60	9.50	16.00	194.55	140.30
10	House	2	3	1	OPTIONAL	104.75	9.00	8.15	15.50	174.10	137.40
11	House	2	3	1	OPTIONAL	104.75	9.00	8.15	15.50	164.42	137.40
12	House	2	3	1	OPTIONAL	104.75	9.00	8.15	15.50	158.10	137.40
13	House	2	3	1	OPTIONAL	104.75	9.00	8.15	15.50	167.93	137.40
14	House	2	3	1	OPTIONAL	104.75	9.00	8.15	15.50	184.64	137.40
15	House	2	3	1	OPTIONAL	104.75	9.00	8.15	15.50	162.25	137.40
16	House	2	3	1	OPTIONAL	104.75	9.00	8.15	15.50	162.25	137.40
17	House	2	3	1	OPTIONAL	104.75	9.00	8.15	15.50	165.35	137.40
18	House	2	3	1	OPTIONAL	104.75	9.00	8.15	15.50	163.55	137.40
19	House	2	3	1	OPTIONAL	104.75	9.00	8.15	15.50	185.75	137.40
20	House	2	3	1		104.75	9.00	8.15	15.50	151.00	137.40
21	House	2	3	1		104.75	9.00	8.15	15.50	145.70	137.40
22	House	2	3	1	OPTIONAL	104.75	9.00	8.15	15.50	188.45	137.40
23	House	2	3	1	OPTIONAL	104.75	9.00	8.15	15.50	176.65	137.40
24	House	2	3	1		104.75	9.00	8.15	15.50	148.75	137.40
25	House	2	3	1		104.75	9.00	8.15	15.50	147.65	137.40

NOTE: the areas stated above may slightly differ upon issuance of relevant authority permits

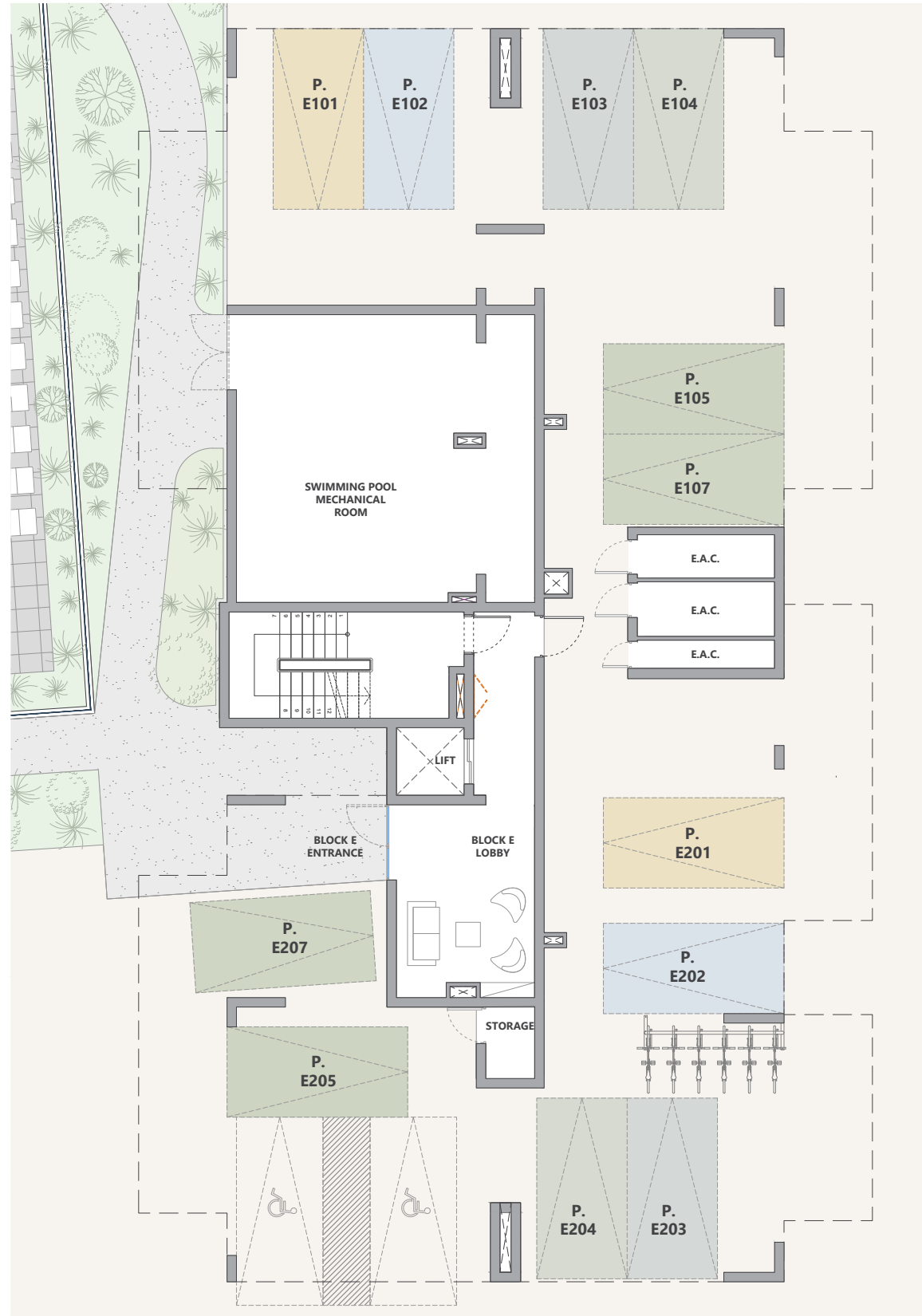


masterplan



floor plans apartments

block E
ground floor



block E
1st floor



UNIT N°	TOTAL AREA M ²
E101	66.07
E102	65.42
E103	65.02
E104	62.77
E105	45.42
E106	45.20
E107	64.40
E108	66.35
E109	46.08

floor plans apartments

block E
2nd floor

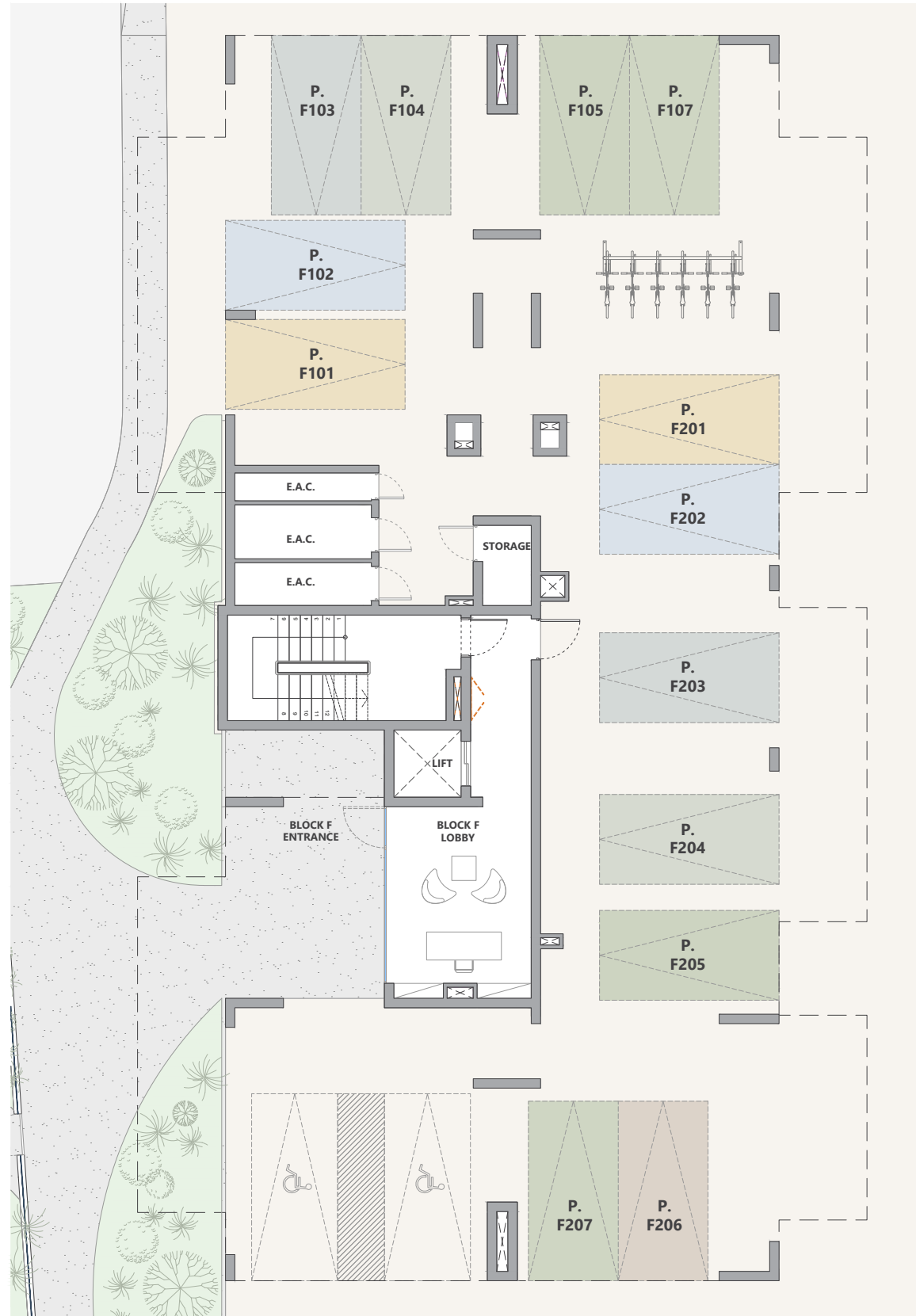


UNIT N°	TOTAL AREA M ²
E201	66.07
E202	65.42
E203	65.02
E204	62.77
E205	45.42
E206	45.20
E207	64.40
E208	66.35
E209	46.08



floor plans apartments

block F
ground floor



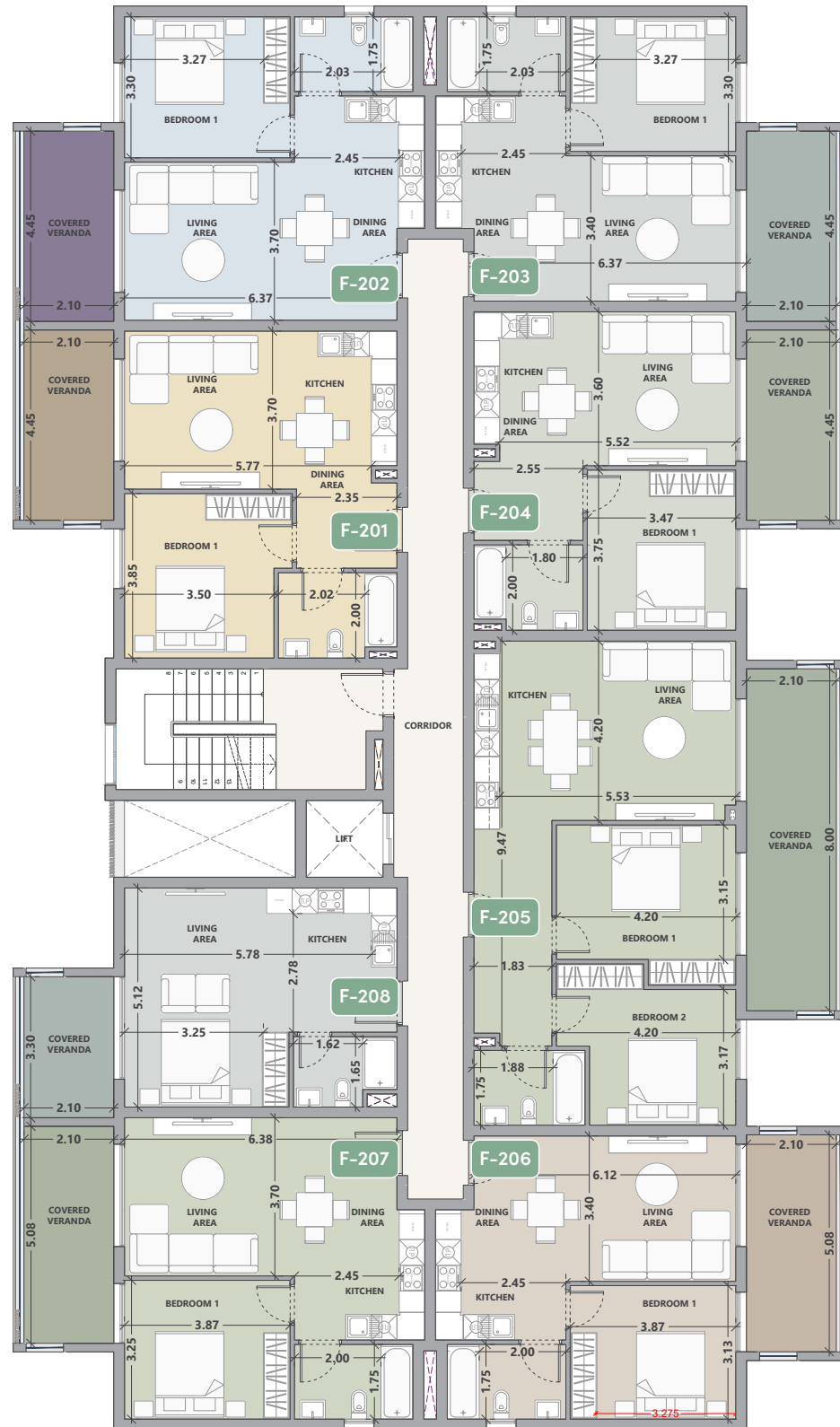
block F
1st floor



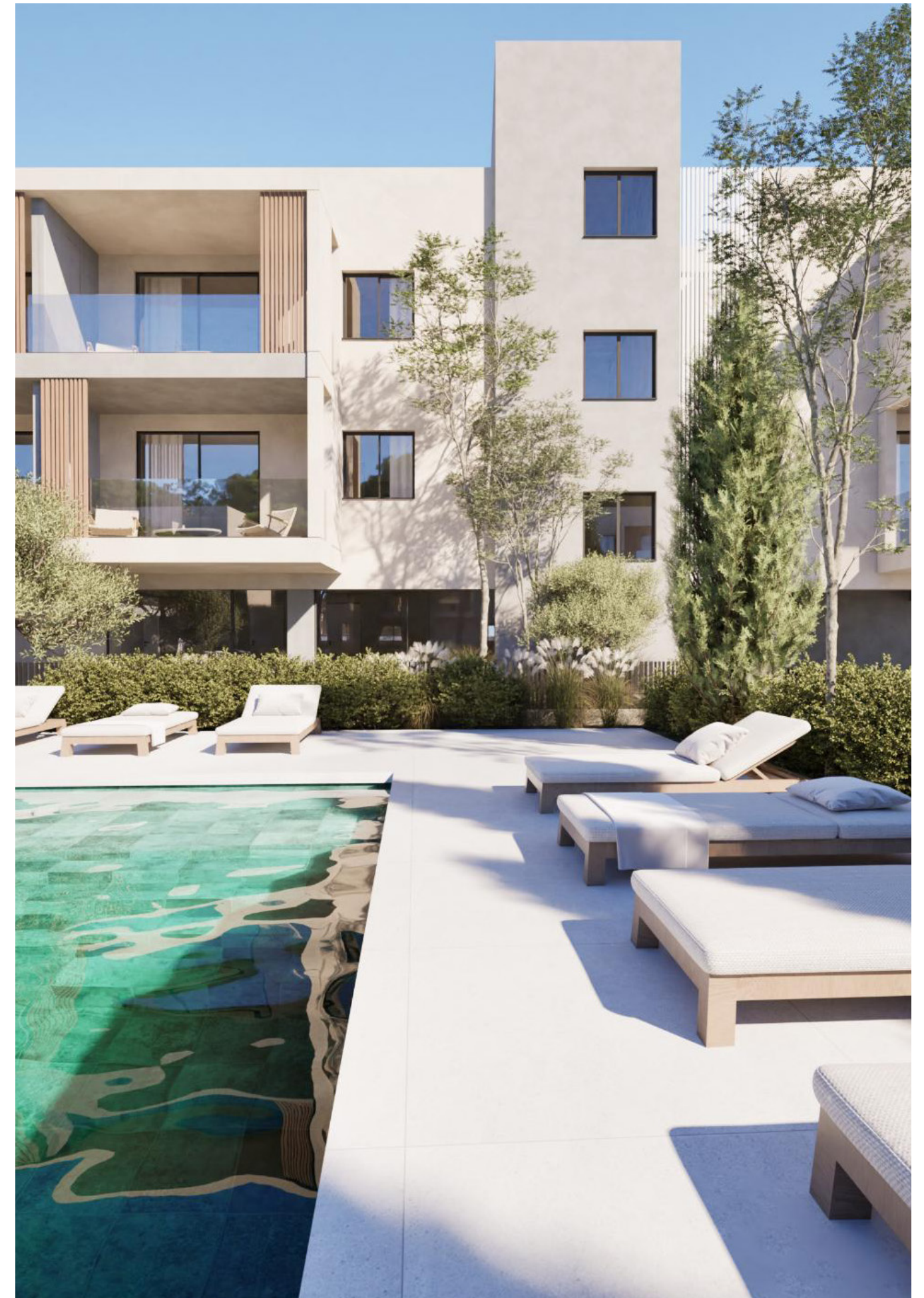
UNIT N°	TOTAL AREA M ²
F101	66.07
F102	65.42
F103	65.02
F104	62.77
F105	45.42
F106	45.20
F107	64.40
F108	66.35
F109	46.08

floor plans apartments

block F
2nd floor

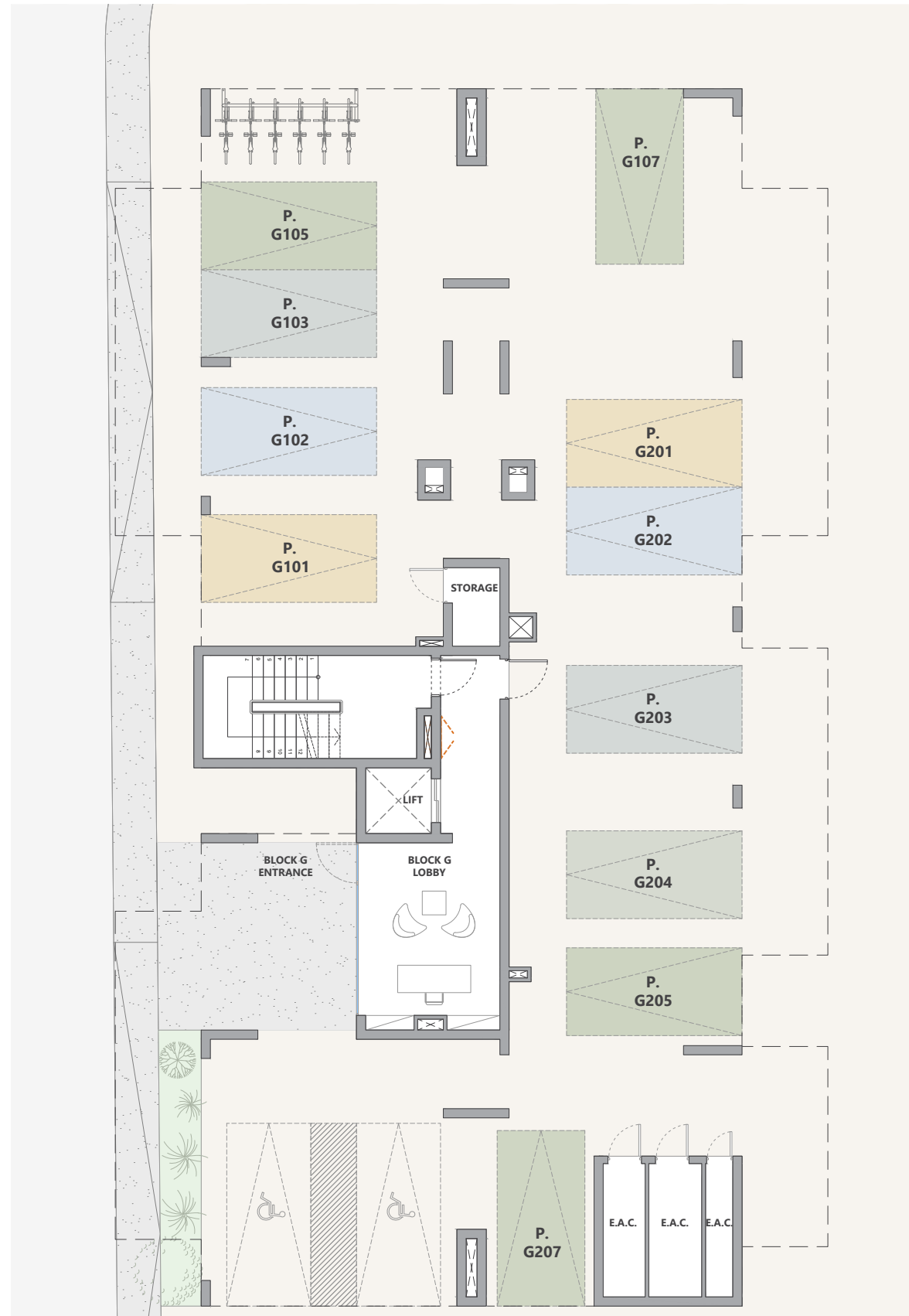


UNIT N°	TOTAL AREA M ²
F201	66.07
F202	65.42
F203	65.02
F204	62.77
F205	45.42
F206	45.20
F207	64.40
F208	66.35
F209	46.08

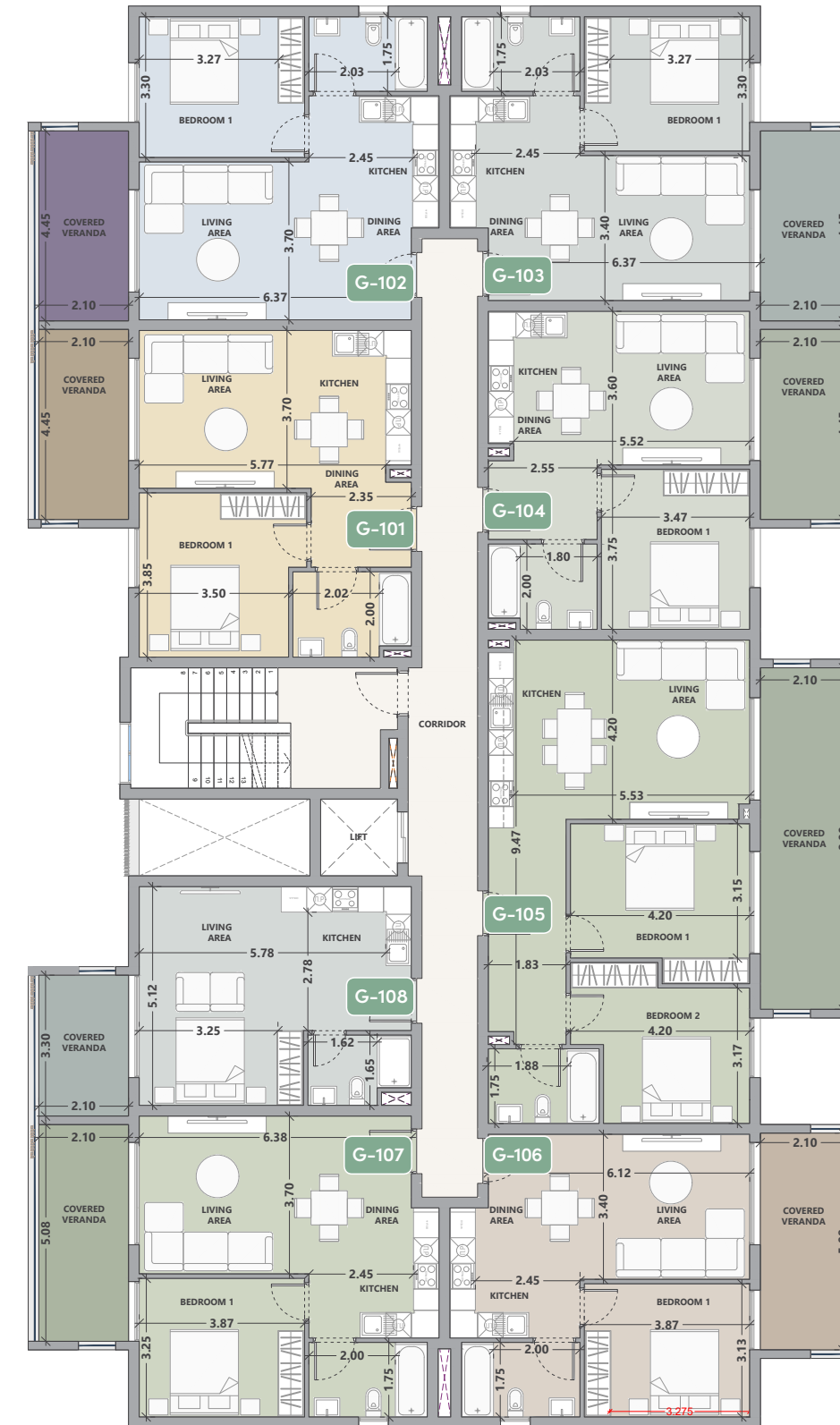


floor plans apartments

block G
ground floor



block G
1st floor



UNIT N°	TOTAL AREA M ²
G101	66.07
G102	65.42
G103	65.02
G104	62.77
G105	45.42
G106	45.20
G107	64.40
G108	66.35
G109	46.08

floor plans apartments

block G
2nd floor

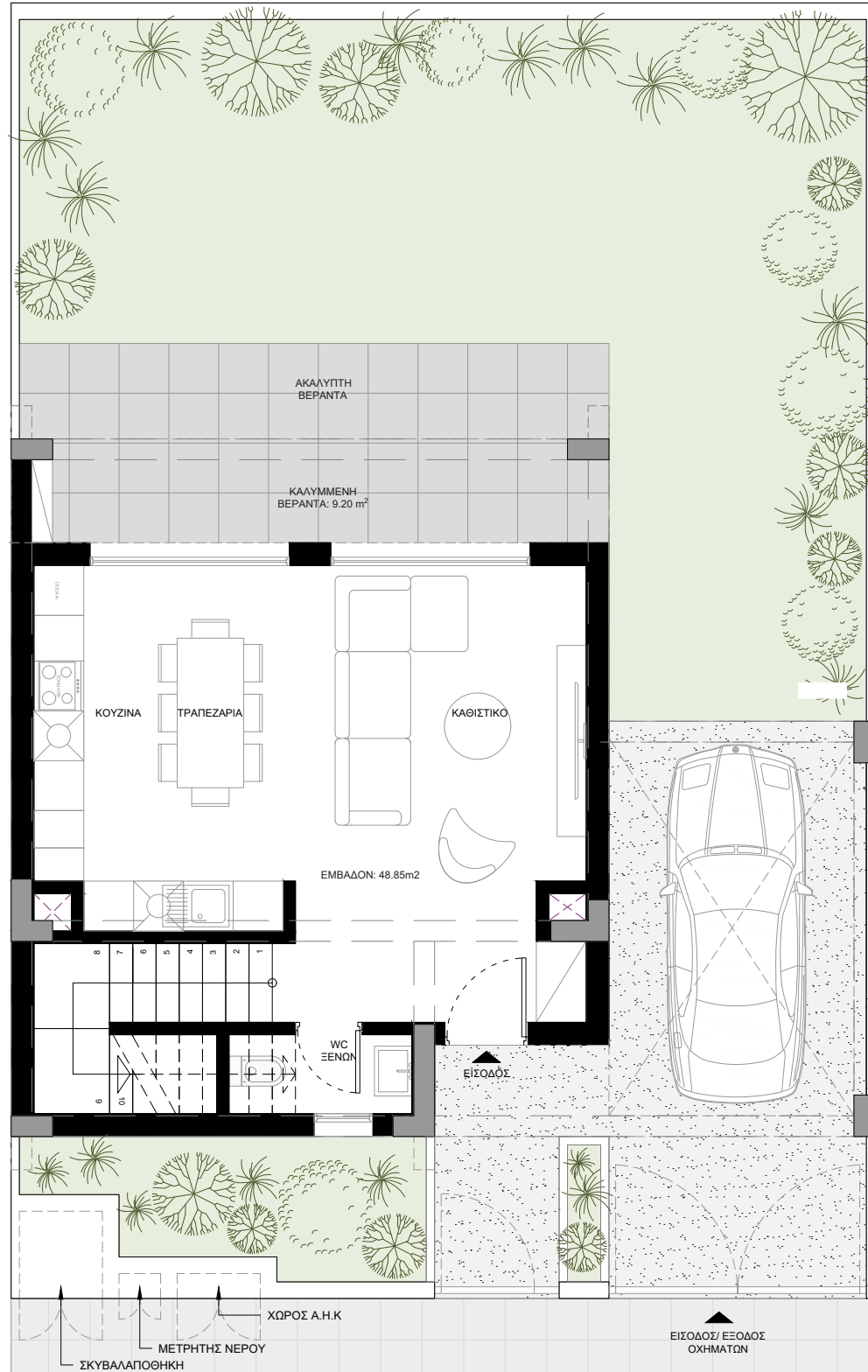


UNIT N°	TOTAL AREA M ²
G201	66.07
G202	65.42
G203	65.02
G204	62.77
G205	45.42
G206	45.20
G207	64.40
G208	66.35
G209	46.08

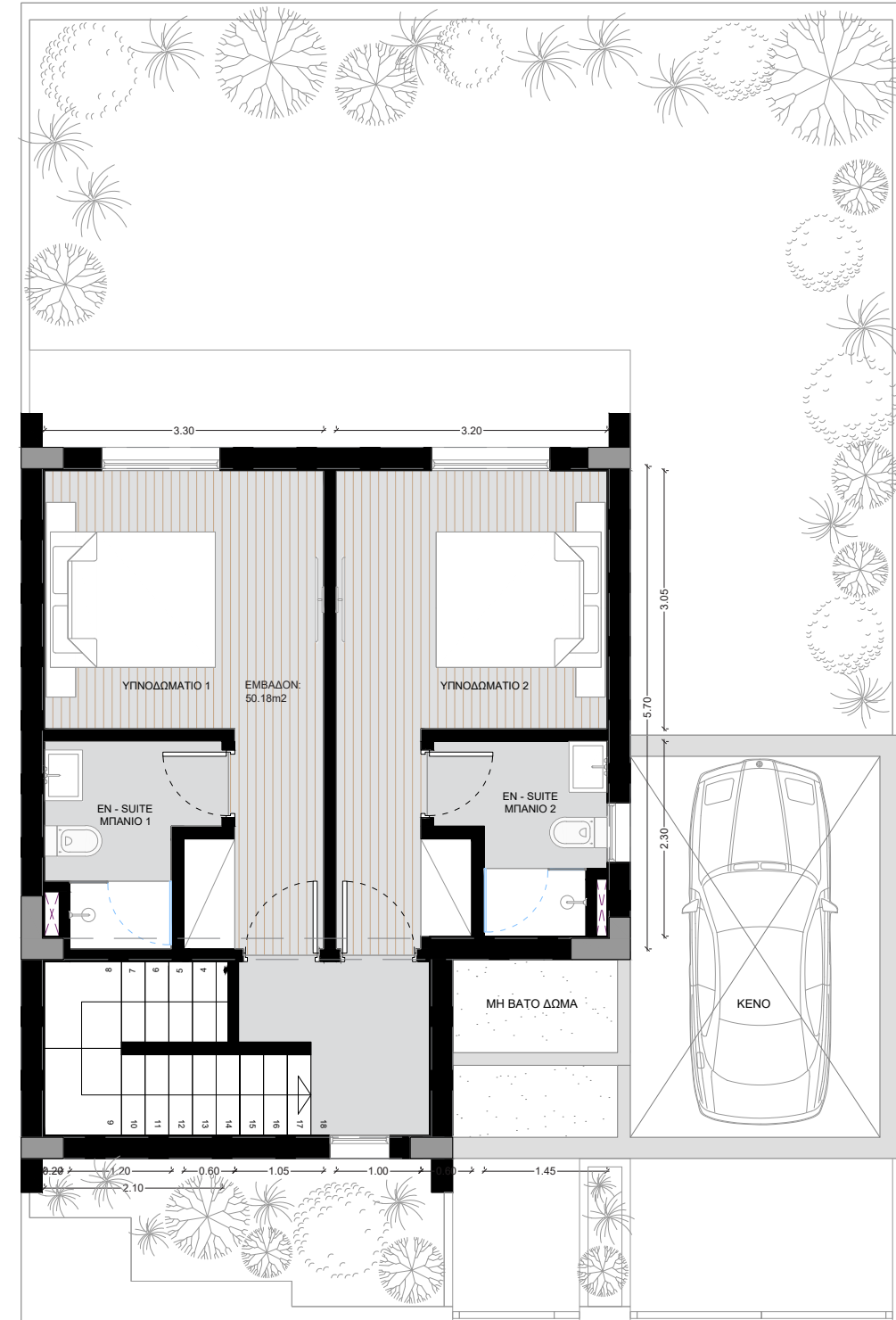


floor plans villas

type A ground floor



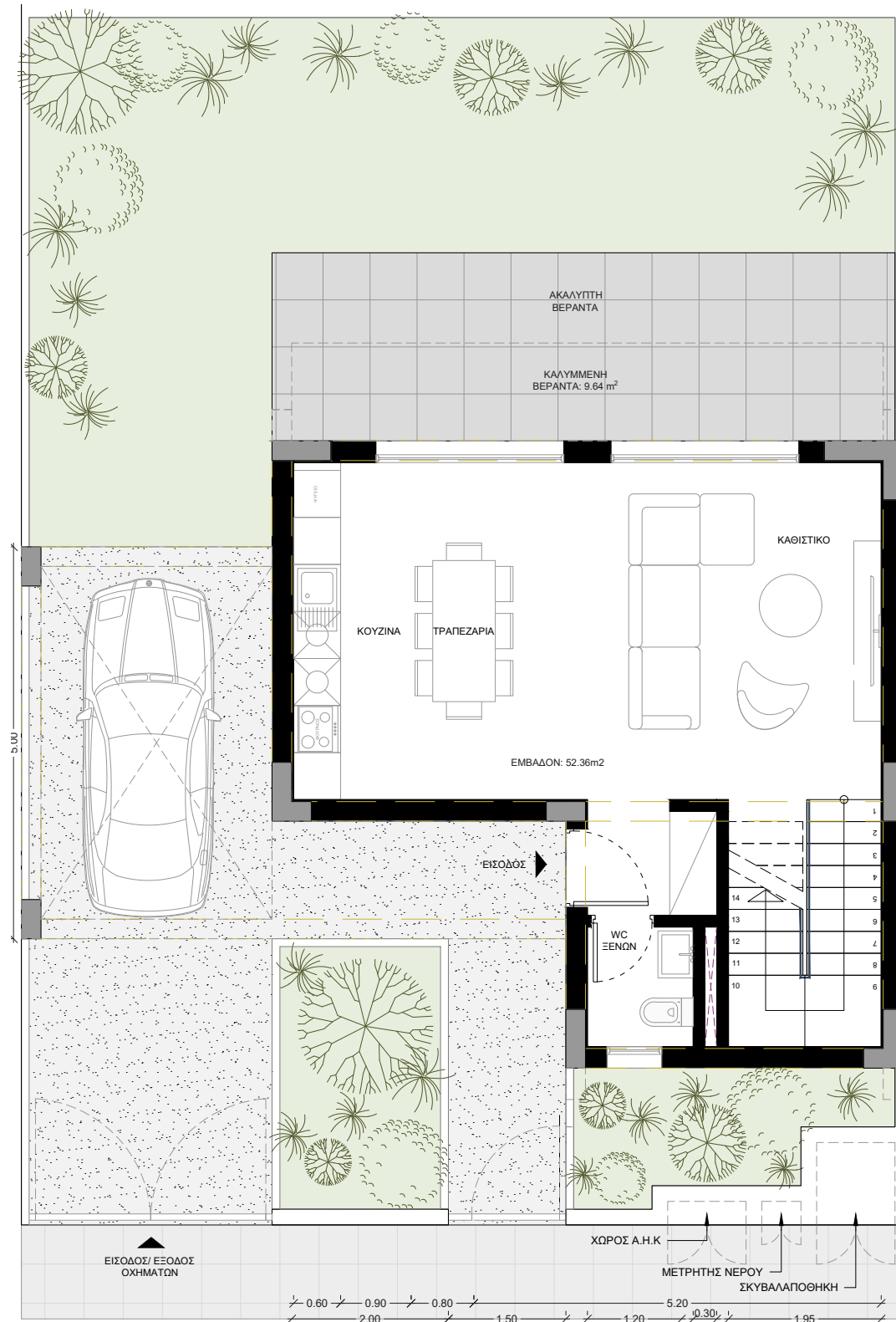
type A 1st floor



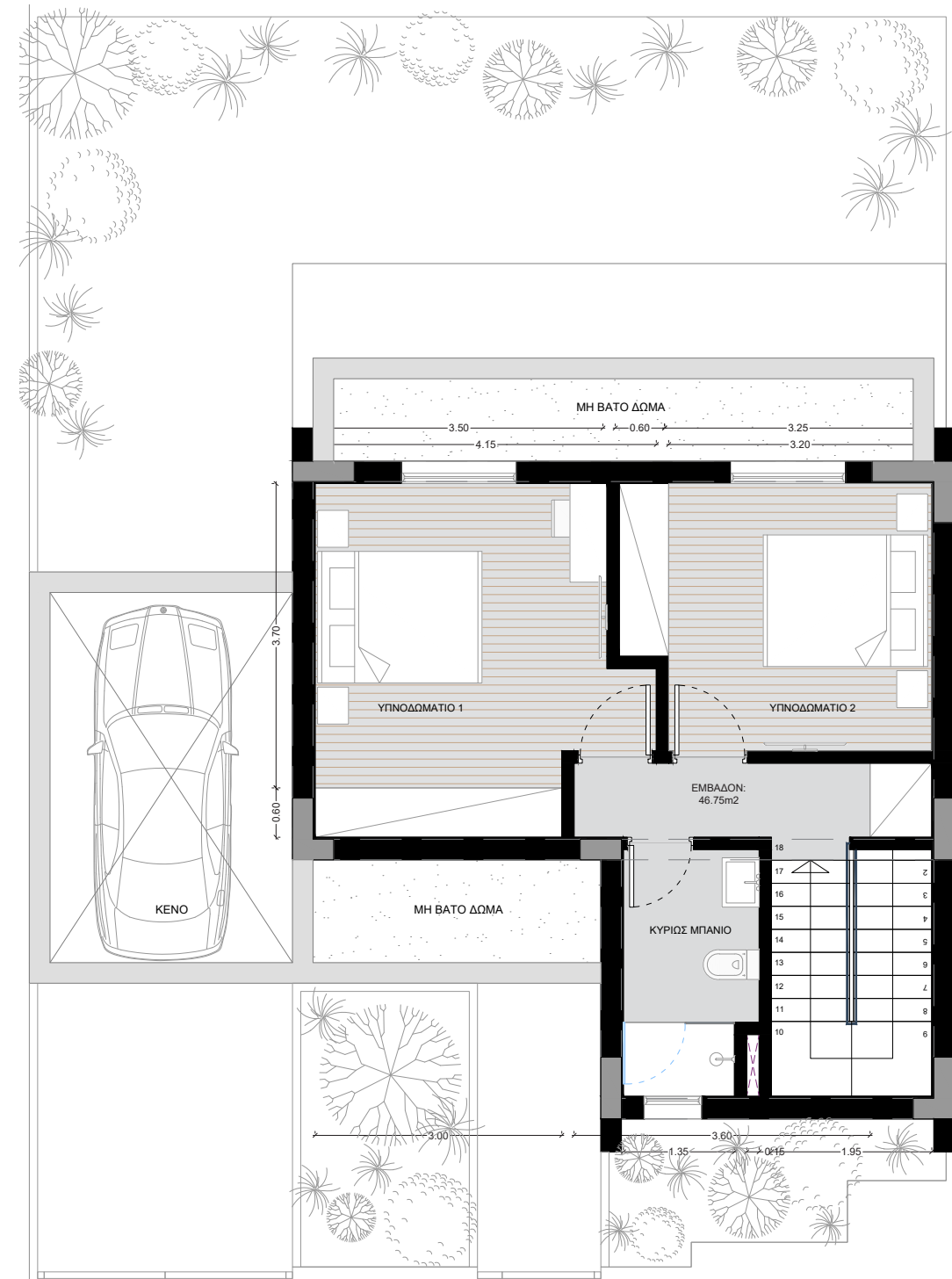
PRIVATE INTERIOR	COVERED VERANDA	TOTAL AREA M ²
104.75	9.00	137.40

floor plans villas

type B ground floor



type B 1st floor



PRIVATE INTERIOR	COVERED VERANDA	TOTAL AREA M ²
104.75	9.00	137.40



signature finishes

smart

Thoughtful design and attention to detail define Salt Lake Residences apartments interiors, balancing style with practicality:

- Ceramic tiles to be installed in living room, kitchen and bedrooms.
- Ceramic tiles to be applied on bathroom floors and walls.
- Internal and external doors, as well as kitchen cabinets and wardrobes, to be finished in melamine.
- Provision for split-unit A/C in all areas.

The villas are designed with durable, modern finishes that ensure comfort, quality, and timeless style:

- Reinforced concrete structure with thermal-insulated exterior walls
- Laminate parquet flooring in living areas and bedrooms; ceramic tiles in bathrooms and verandas
- Contemporary melamine kitchen cabinets and wardrobes with clean, functional layouts
- Artificial granite kitchen worktop with tiled backsplash
- High-performance ALUMIL thermal aluminum frames and double-glazed windows
- Chrome-finish sanitary ware and mixers
- Provision for split A/C units and underfloor heating

Note: movable furniture, home appliances & interior items are extras.



