



Plot 73



# bbf:

- one of the TOP 3 developers in Cyprus in the premium real estate segment
- more than 260 employees in 5 countries
- projects:  
Cyprus, Greece, Canada, Portugal
- full scope of real estate services  
from project development to property management





# Limassol

Limassol is situated on the southern coast of Cyprus – a Mediterranean island famed for its pristine beaches and pleasantly warm climate. Limassol boasts a global reputation as a Mediterranean seaside resort and as an international business hub and is considered a top destination for luxury real estate. The city is rich in history, bathed in year-round sunlight, buzzing with life, brimming in international business opportunities and world-class options for fine dining, accommodation and entertainment. For those looking for a place to settle to work and play, Limassol is the place to be.

- business capital of Cyprus
- international community
- developed infrastructure
- active cultural life
- best 5\* hotels
- world-class restaurants, bars, nightclubs
- a variety of private schools



# Limassol, Germasogeia



Limassol boasts the most developed infrastructure in the region, complete with sophisticated bars, restaurants, 5-star hotels, award-winning spas, and useful amenities that create a sense of an easy-going life experience. Additionally, the city offers a wide range of sandy beaches, perfect for soaking up the Mediterranean sun. Limassol also boasts an active business environment, making it an ideal destination for both leisure and work. As one of the most sought-after tourist areas in the region, Limassol promises to deliver an unforgettable experience—to live, work, and play.

# Plot 73 - location



# Plot 73 - location



Trodos mountains, 50 min

Germasogeia  
Γερμασόγεια

Mouttagiaka  
Μουτταγιάκα

Larnaka airport, 40 min

MERSINIES  
ΜΕΡΣΙΝΙΕΣ

MESOVOUNIA  
ΜΕΣΟΒΟΥΝΙΑ

Agios  
Athanasios  
Αγ. Αθανάσιος

GREEN AREA

CHALOMANTRES  
ΧΑΛΟΜΑΝΤΡΕΣ  
(COLUMBIA)

KALOGIROI  
ΚΑΛΟΓΗΡΟΙ

Plot 73

St. Raphael marina, 12 min

5\* hotels, 10 min

EKALI  
ΕΚΑΛΗ

Mesa Geitonia  
Μέσα Γειτονιά

ΠΟΤΑΜΟΣ ΤΗΣ  
ΓΕΡΜΑΣΟΓΕΙΑΣ  
ΠΟΤΑΜΟΣ ΤΗΣ  
ΓΕΡΜΑΣΟΓΕΙΑΣ

Bars and restaurants, 2 min

Paphos airport, 50 min

KAPSALOS  
ΚΑΨΑΛΟΣ

Business center, 14 min

AGIOS NICOLAOS  
ΑΓΙΟΣ  
ΝΙΚΟΛΑΟΣ

Dasaudi beach, 3 min

Kato  
Lemidia  
Κάτω  
Λεμιδιά

AGIA ZONI  
ΑΓ. ΖΩΝΗ

Old town, 14 min

Limassol  
Λεμεσός

MyMall, 25 min

Marina, 15 min

OMONIA  
ΟΜΟΝΟΙΑ

# ● ● Plot 73

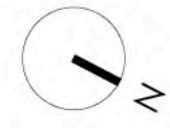


The limited number of residential units fosters a sense of exclusivity and community. The private gated concept presents the unique opportunity to experience the vibrant coastal city life in style, in a mix of large 1- and 2- bedroom apartments or in the penthouse that crowns the building's last floor. Immerse yourself in a haven of luxury and ultimate comfort where the city's pulse beats.

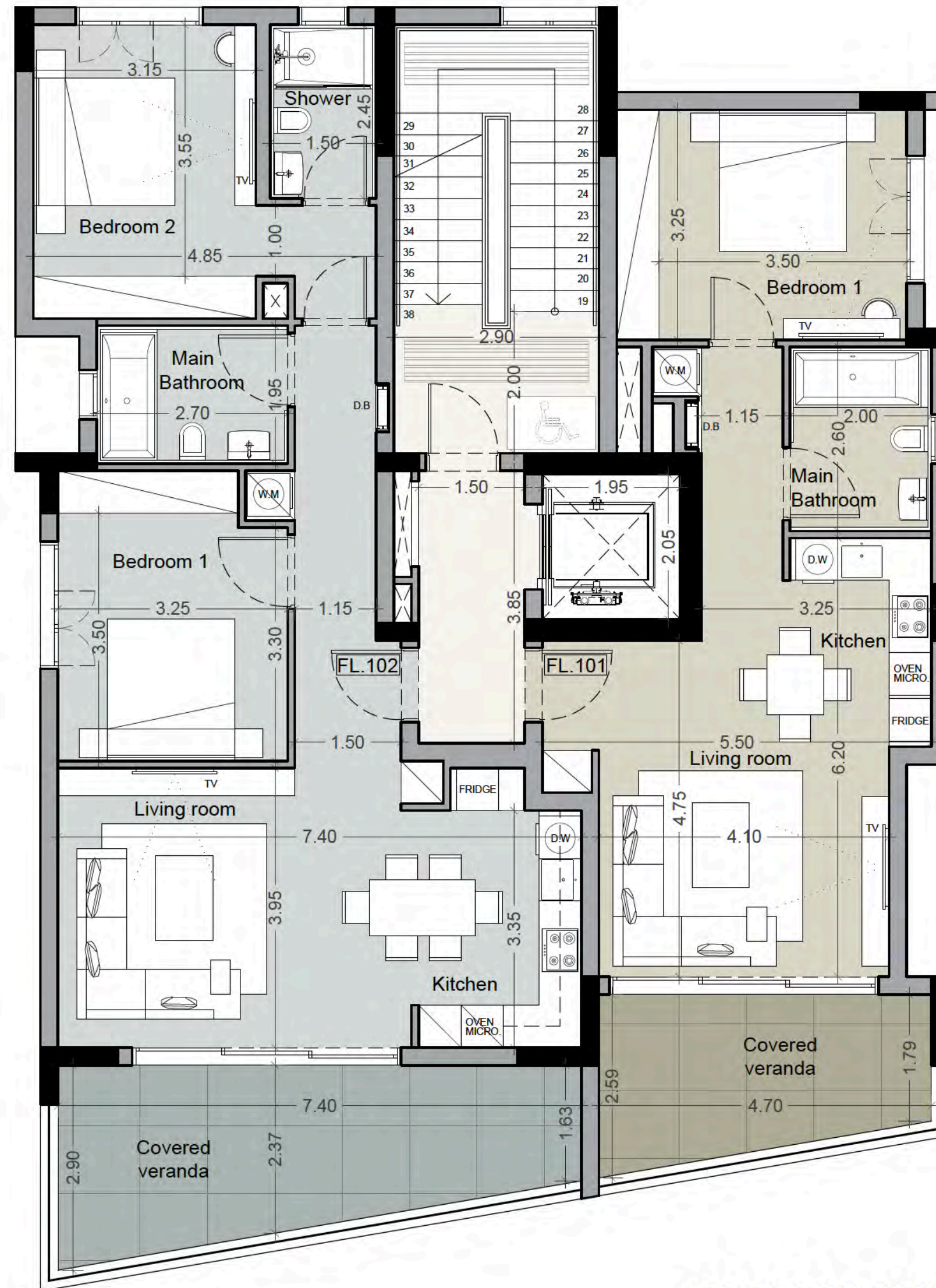
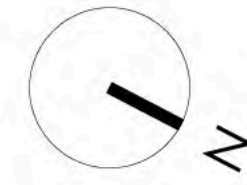
# Plot 73

FL	UNIT NO	PROPERTY TYPE or USE	NO OF BED-ROOMS	NO OF BATH-ROOMS	PRIV S.P.	NO OF PARK SPACES	% OF COMMON AREA PER FLOOR	AREA (m2)							
								Private Interior (Gross area)	Covered Veranda	Sellable Auxiliary		Sellable Area (1+2+3)	Roof Terrace	Common area per unit	TOTAL AREA (4+5...+11)
										Floor	Private interior				
GF	P1	Parking													
1st	A101	Apartment	1	1		1	10%	59.6	11.5			71		19	90
	A102	Apartment	2	2		1	15%	88.8	19.8			109		29	138
2nd	A201	Apartment	1	1		1	10%	59.6	11.5			71		19	90
	A202	Apartment	2	2		1	15%	88.8	19.8			109		29	138
3rd	A301	Apartment	1	1		1	10%	59.6	11.5			71		19	90
	A302	Apartment	2	2		1	15%	88.8	19.8			109		29	138
4th	A401	Penthouse	3	4	YES	1	26%	142.7	42.2	5th	6.6	191	136	52	380
Total Residential						7	100%	588m2	136m2	1st	7m2	731m2		197m2	1,064m2

# Plot 73

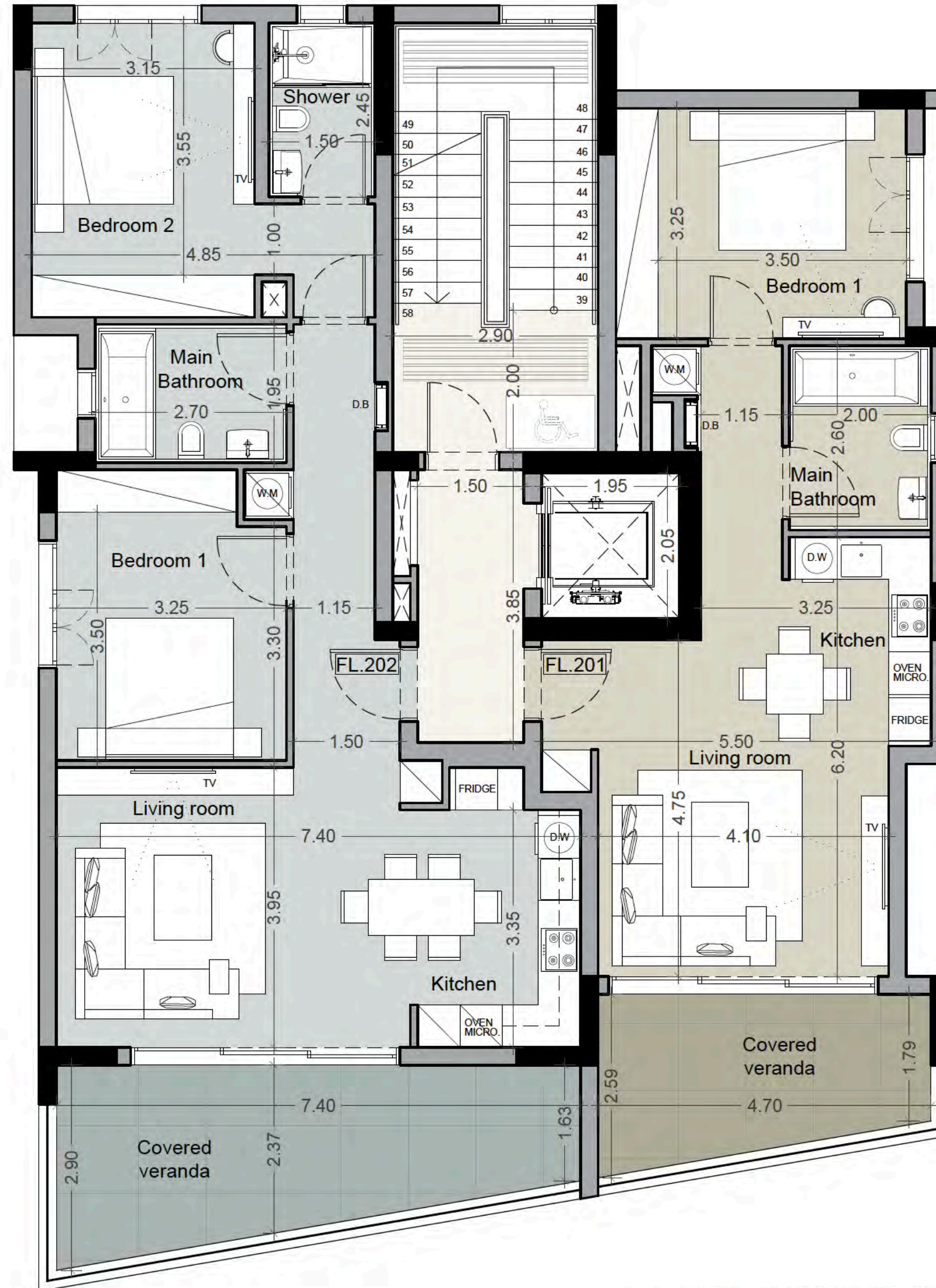
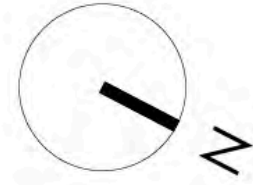


# ● ● Plot 73



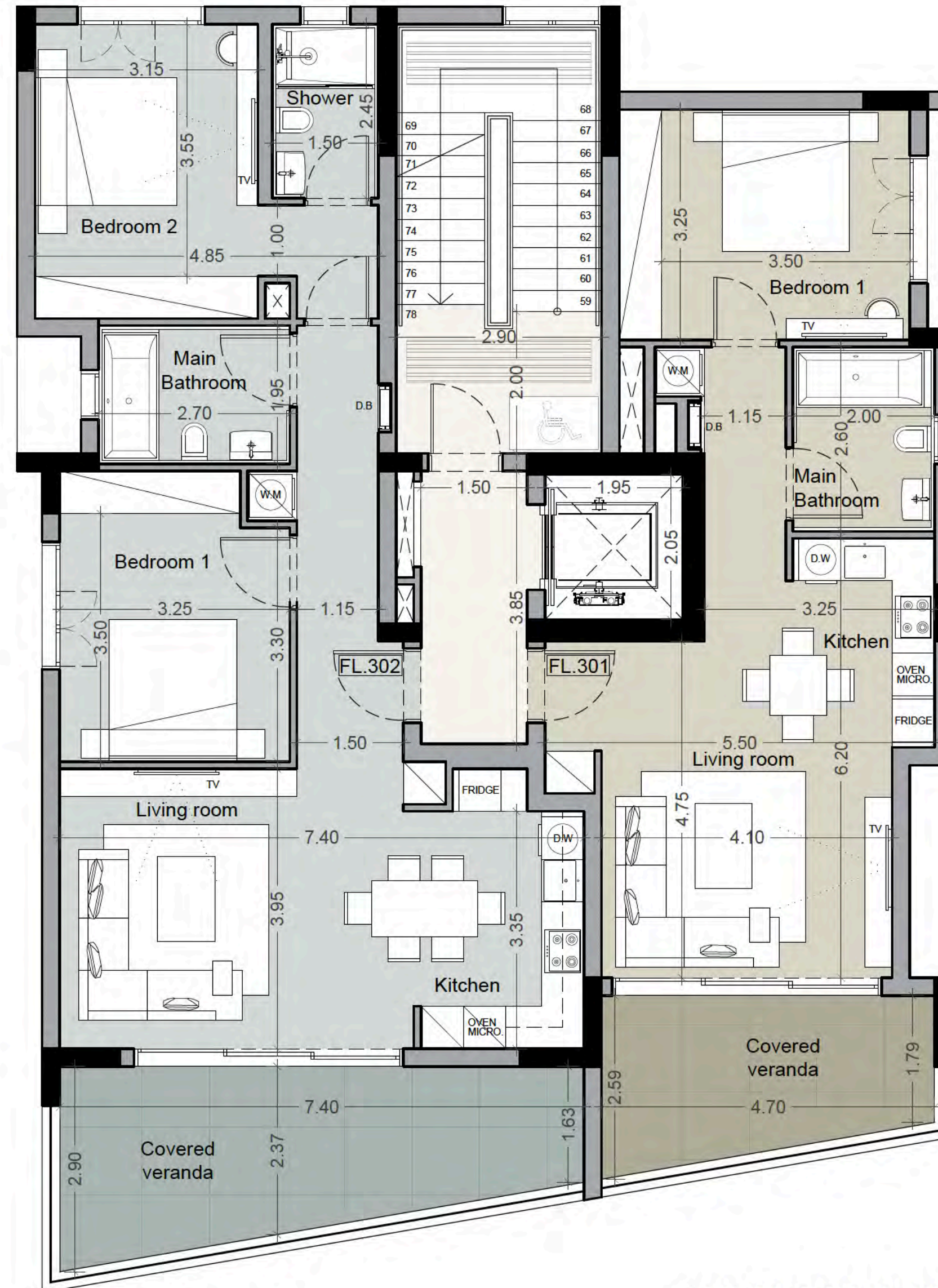
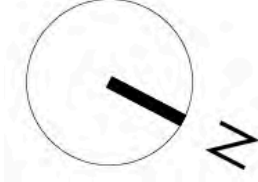
1ST FLOOR PLAN

# Plot 73



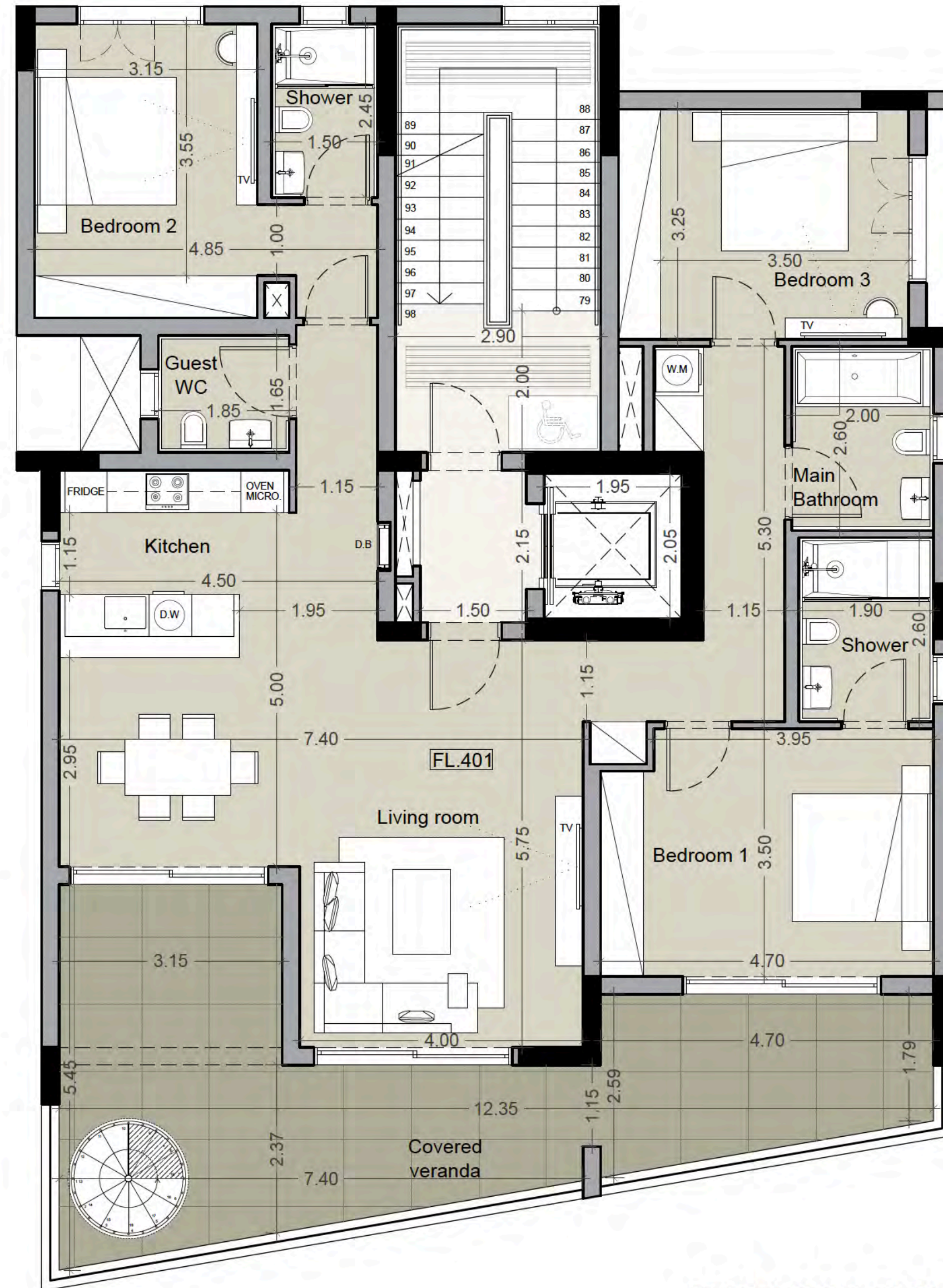
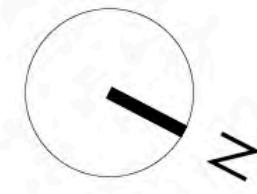
2ND FLOOR PLAN

# Plot 73



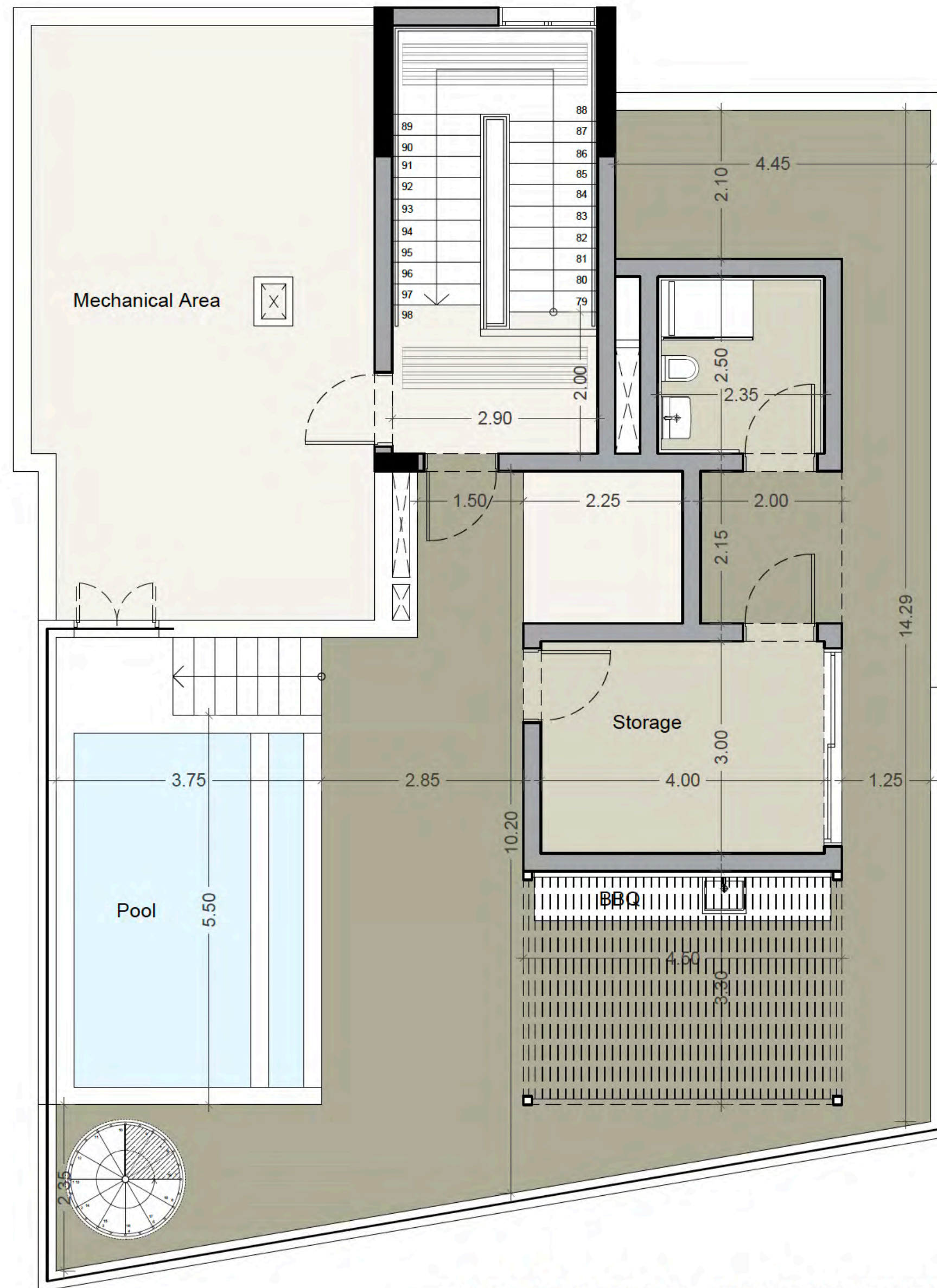
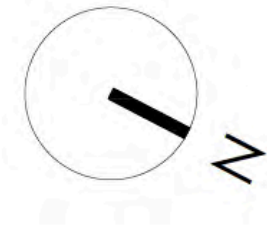
3RD FLOOR PLAN

# ●● Plot 73



4TH FLOOR PLAN

# ●● Plot 73



5TH FLOOR PLAN - ROOF GARDEN



bbf:



Build. Better. Future.

bbf®

HEADQUARTERS

Limassol Ambelakion 28 Street,  
P. Germasogeia 4046 Limassol,  
Cyprus

[info@bbf.com](mailto:info@bbf.com)

+357(25)-315-300

bbf.com

ATHENS-BEIJING-MOSCOW-ST. PETERSBURG-DUBAI  
LIMASSOL-LARNACA-PAPHOS-NICOSIA

