



:cypress grove, Limassol



- one of the TOP 3 developers in Cyprus in the premium real estate segment
- more than 260 employees
- Projects in Cyprus and Greece
- full scope of real estate services from project development to property management



bbf

- 150+ projects - in portfolio
- 2.4 mln. m² - land bank
- 1,21 mln. m² - sellable area
- 3.2 bln. € - total sales value of all developments





● ● cypress grove - location



● ● Limassol

business capital of Cyprus

international community

developed infrastructure

active cultural life

best 5* hotels

world-class restaurants, bars, nightclubs

a variety of private schools

📍 cypress grove - location



Nicosia
60 min
🚗

Troodos mountains
40 min
🚗

Larnaca Airport
40 min
🚗

Paphos Airport
40 min
🚗

:cypress grove



● ● cypress grove - location

:cypress grove



Αγιος
Ιχωνας
Αγ. Τύχων

Georgiou Griva Digey

Παρεκλίσια
Παρεκλησιά

Πύργος
Πύργος

Μονή
Μονή

Supermarket
Metro
8 min



Amara
hotel
5 min



Bars and
restaurants
5 min



Parklane
hotel
5 min



Pyrgos - Pareklisia Rd

E108

● ● agios tychonas

the most prestigious, newly developed and finest area of Limassol, surrounded by the coast, breezy mountains and deluxe establishments

easy access to:

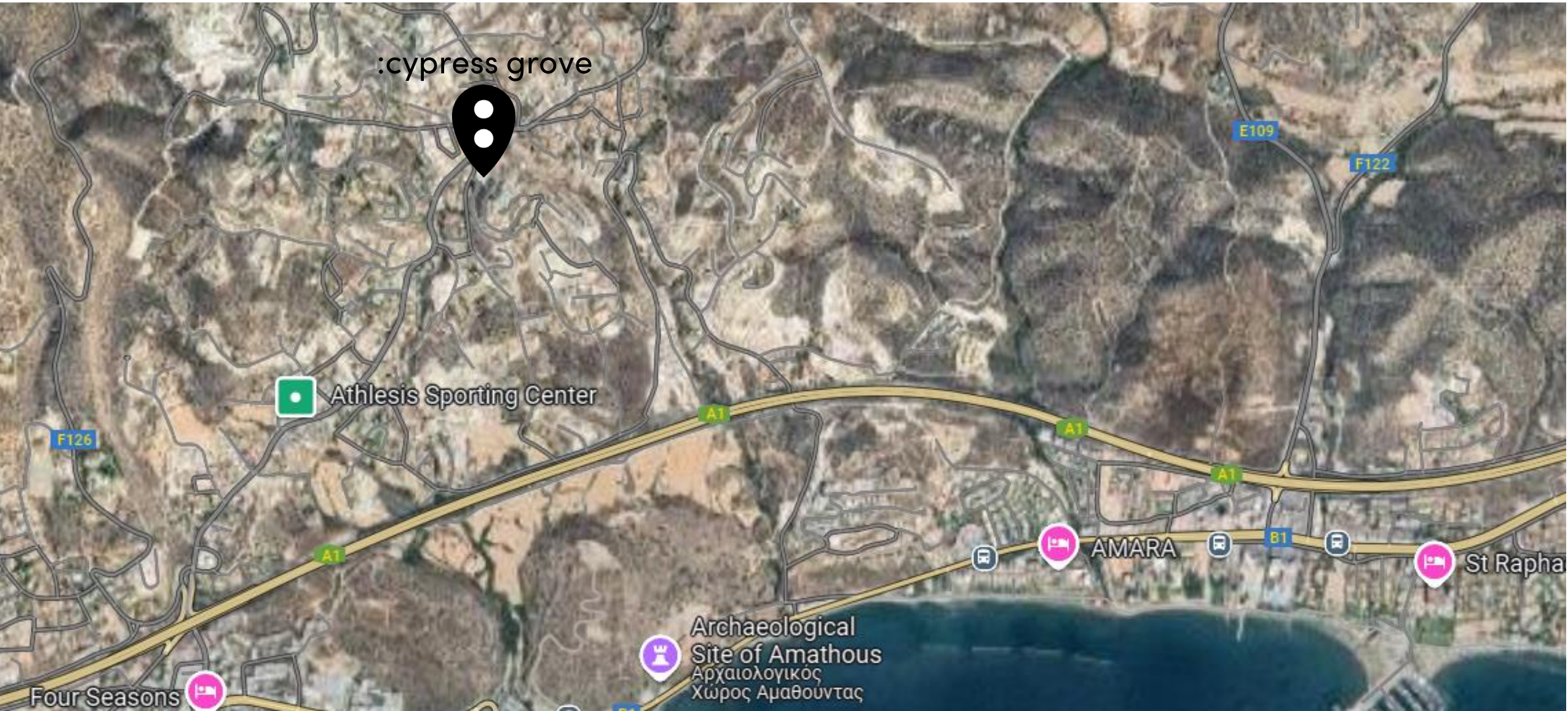
- the sea
- 5* hotels and fine dining
- highway and the seaside
- st.raphael marina
- cinema theater and supermarkets

only 15-20 minutes drive to private schools

- grammar
- foley's
- pascal



● cypress grove – plot 425





● ● project concept

residential complex in a tranquil and captivating neighborhood of Limassol - Agios Tychonas. Surrounded by the breezy mountains, :cypress grove offers a perfect blend of excellent internal amenities, stunning surroundings and easy access to the city, full of experiences to be made.

● ● cypress grove

- sellable area 1 918 m²
- covered verandas 402 m²
- 18 units
- 22 parking slots

unit mix

- 6 – 1 bdr
- 9 – 2 bdr
- 3 – 3 bdr

facilities & amenities

- gated complex
- common swimming pool
- penthouses with private roof tops



● cypress grove – area list block A

UNIT N°	PROPERTY TYPE	BED-ROOMS	BATH-ROOMS	NO OF PARK SPACES	INDOOR AREA M ²	COV. VERANDA M ²	UNCOV. VERANDA M ²	ROOF TERRACE	PROVISION FOR JACCUZI AND PERGOLA	STORAGE M ²	COMMON AREA PER UNIT M ²	TOTAL AREA M ²
101	Apartment	2	2	1	88.30	29.95	54.70			2.60	31.79	207.34
102	Apartment	1	1	1	56.90	23.10				2.66	21.51	104.17
103	Apartment	2	2	1	88.28	17.96				3.03	28.57	137.84
104	Apartment	2	2	1	90.55	29.77				3.53	32.35	156.20
201	Apartment	2	2	1	88.30	29.95				2.91	31.79	152.95
202	Apartment	1	1	1	56.90	23.10				2.78	21.51	104.29
203	Apartment	2	2	1	88.28	17.96				2.75	28.57	137.56
204	Apartment	2	2	1	90.55	29.77				2.52	32.35	155.19
301	Penthouse	2	2	1	88.30	29.95		63.85	YES	3.43	31.79	217.32
302	Apartment	1	1	1	56.90	23.10				2.93	21.51	104.44
303	Penthouse	2	2	1	88.28	17.96		50.45	YES	2.60	28.57	187.86
304	Penthouse	2	2	1	90.55	29.77		61.80	YES	2.52	32.35	216.99

● cypress grove– area list block B

UNIT N°	PROPERTY TYPE	BED-ROOMS	BATH-ROOMS	NO OF PARK SPACES	INDOOR AREA M ²	COV. VERANDA M ²	UNCOV. VERANDA M ²	ROOF TERRACE	PROVISION FOR JACUZZI AND PERGOLA	STOR-AGE M ²	STORAGE M ²	TOTAL AREA M ²
101	Apartment	1	1	1	57.75	10.30	38.03			5.30	26.47	137.85
102	Apartment	3	3	1	123.80	22.76	160.56			4.80	57.01	368.93
201	Apartment	1	1	1	57.75	10.30				4.80	26.47	99.32
202	Apartment	3	3	1	123.80	22.76				3.20	57.01	206.77
301	Apartment	1	1	1	57.75	10.30				5.00	26.47	99.52
302	Penthouse	3	3	1	123.80	22.76		55.65	YES	3.20	57.01	262.42

● ● cypress grove - 1st floor



FLOOR 1

● cypress grove - 2nd floor



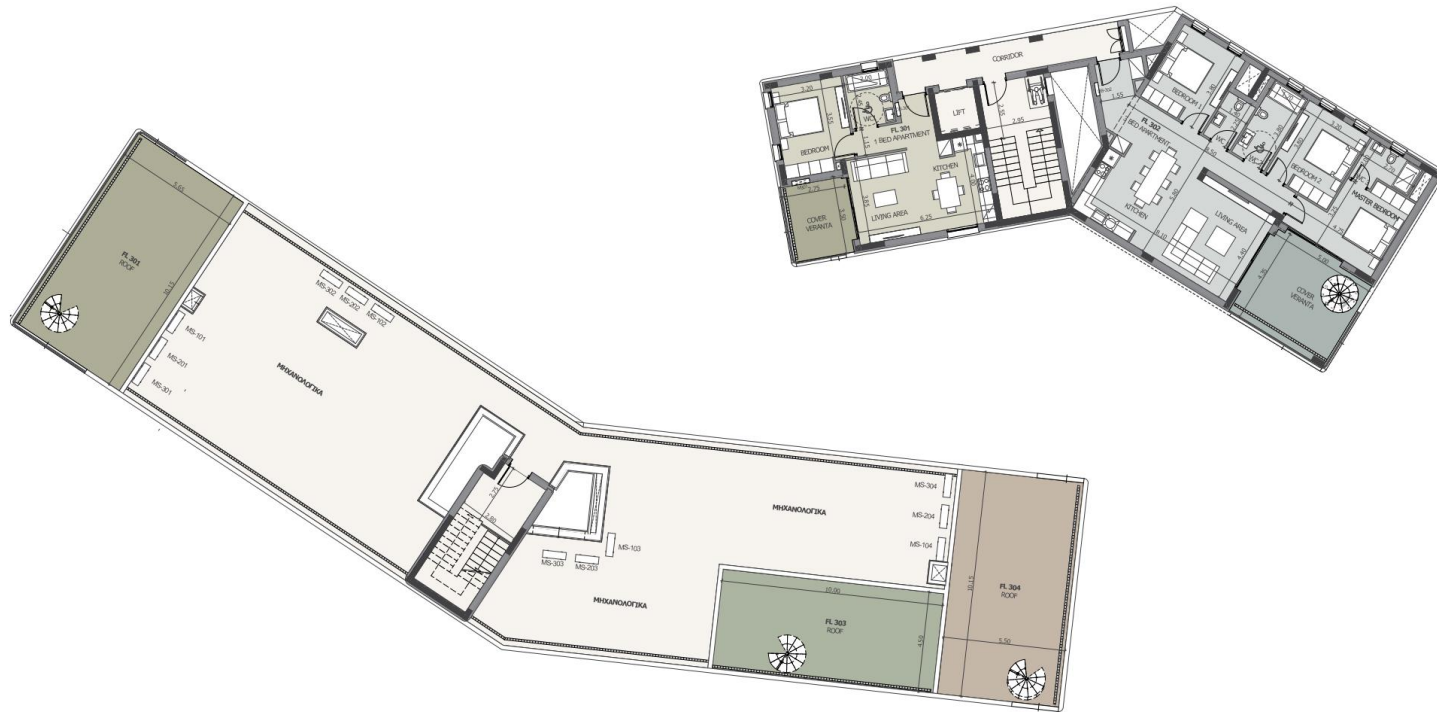
FLOOR 2

● cypress grove - 3rd floor



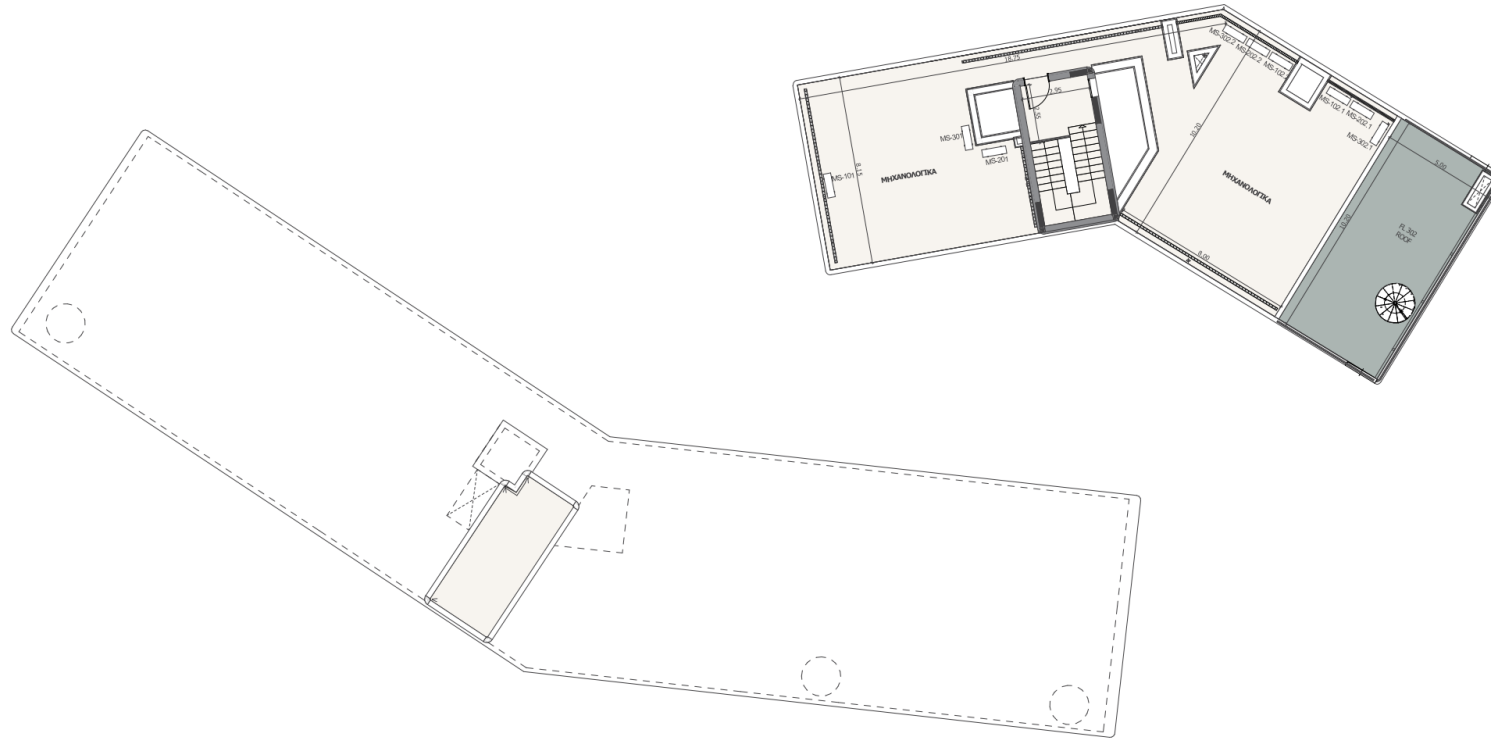
FLOOR 3

● cypress grove – 4th floor



LEVEL 4

● cypress grove – roof plan



ROOF FLOOR



• bbf: cypress grove finishes

- Laminated floors in living area, kitchen, and bedrooms;
- Ceramic tiles in the toilets and bathrooms;
- Security and fireproof entrance doors;
- Provisions for underfloor heating;
- Provisions for A/C;
- High-standard sanitary ware from European brands;
- Thermal aluminum window frames with double glazing;
- High-standard kitchen cabinets & wardrobes from European brands.

bbf:



build. better. future.

bbf®

HEADQUARTERS

Limassol Ambelakion 28 Street,
P. Germasogeia 4046 Limassol,
Cyprus

info@bbf.com

+357(25)-315-300

bbf.com

ATHENS-BEIJING-MOSCOW-ST. PETERSBURG-DUBAI
LIMASSOL-LARNACA-PAPHOS-NICOSIA

