



:blackpine

bbf:

150+

projects in portfolio

1.21

mln. m² of a sellable area

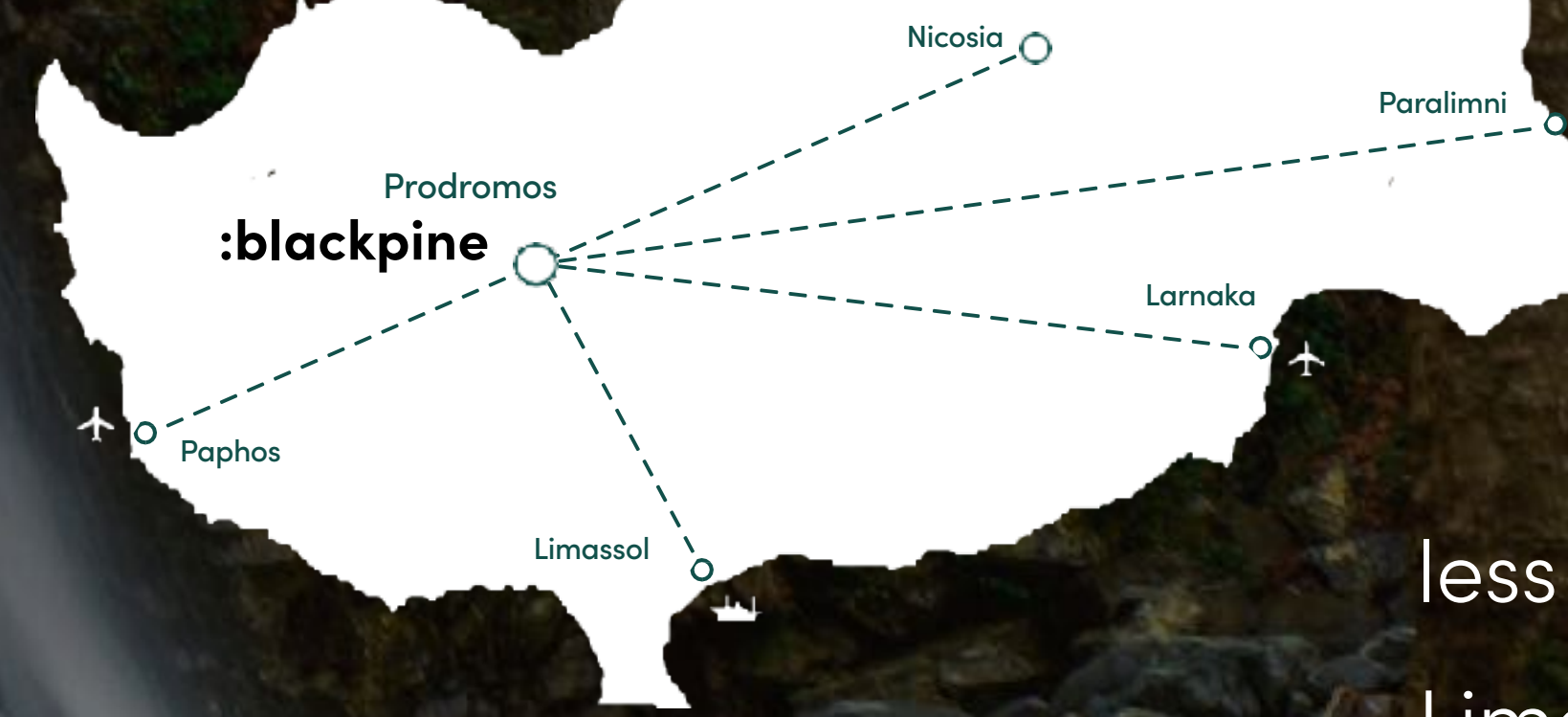
2.4

mln. m² of the land bank

3.2

bln. € is a total sales value of all developments

Prodromos village, is located at an altitude of 1450 meters above sea level. It is the highest mountain village in Cyprus and part of the district of Limassol.



less than 1 hour from Limassol & Nicosia.



higher state of living



incredible views.
natural trails.



fresh air
with smell
of pine trees.

snow



:blackpine redefines mountain living in the heart of Prodomos, Limassol. Set among the pine-covered slopes of Cyprus' highest village, this exclusive residential enclave blends striking modern architecture with the untouched beauty of the Troodos mountains.

Every detail of the design has been crafted to enhance the mountain experience. Clean architectural lines, dark clad façades, and expansive glass surfaces — beautifully showcased in the 3D visuals — create residences that feel both bold and seamlessly integrated into the landscape. The result is a sense of privacy and tranquility, complemented by breathtaking views throughout the year.



:blackpine offers a selection of modern apartments and houses, creating a small community for people who want comfort, peace, and a close connection to nature

Block A

Block B

Houses
(H1-H3)

Houses
(H4, H5)

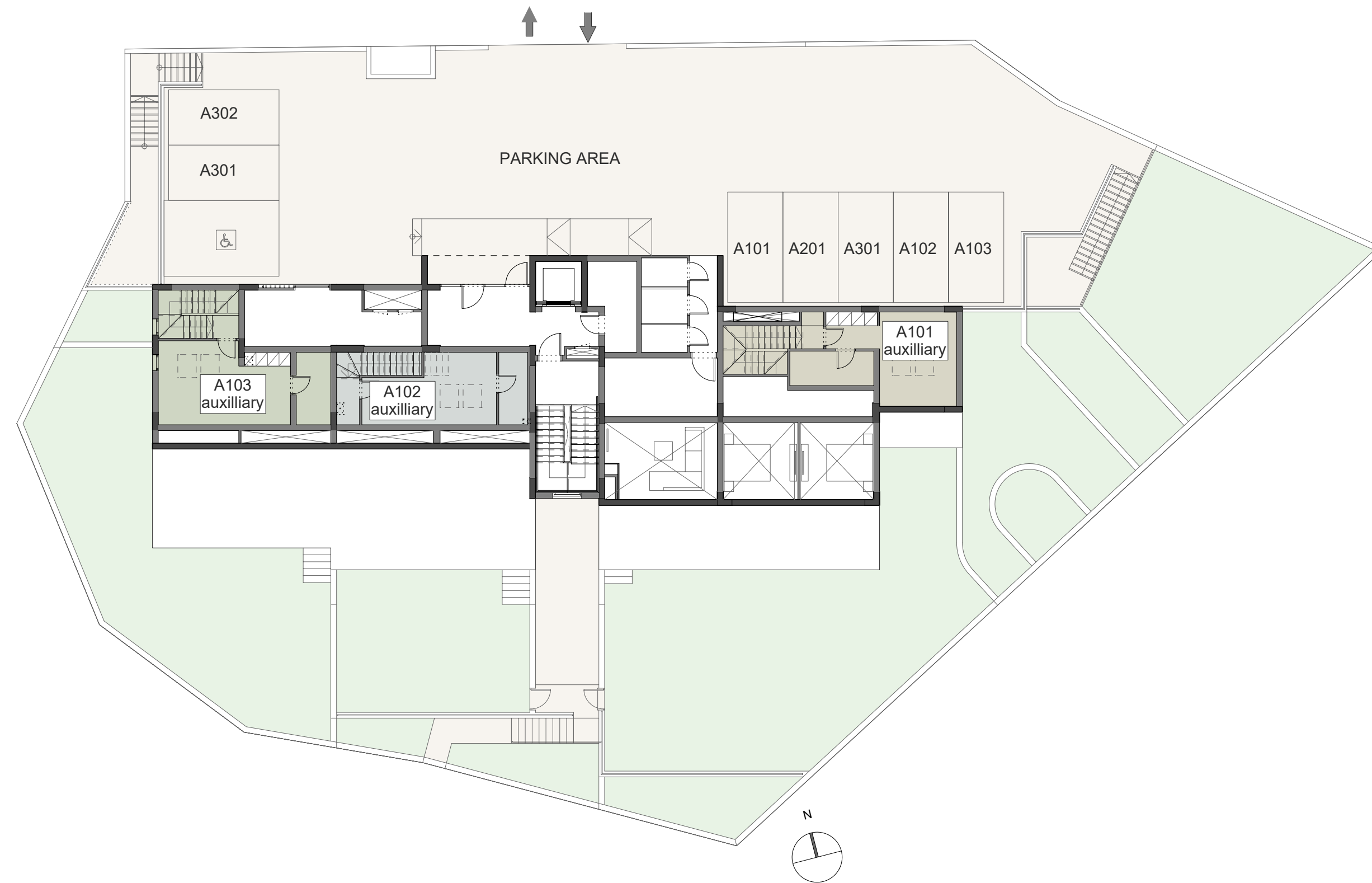
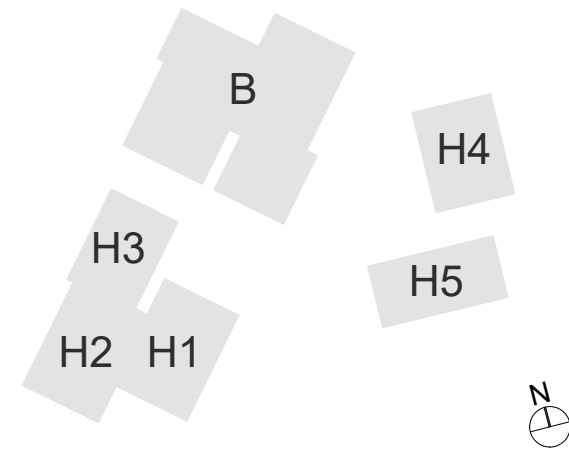




Block A

General Layout - Level 00

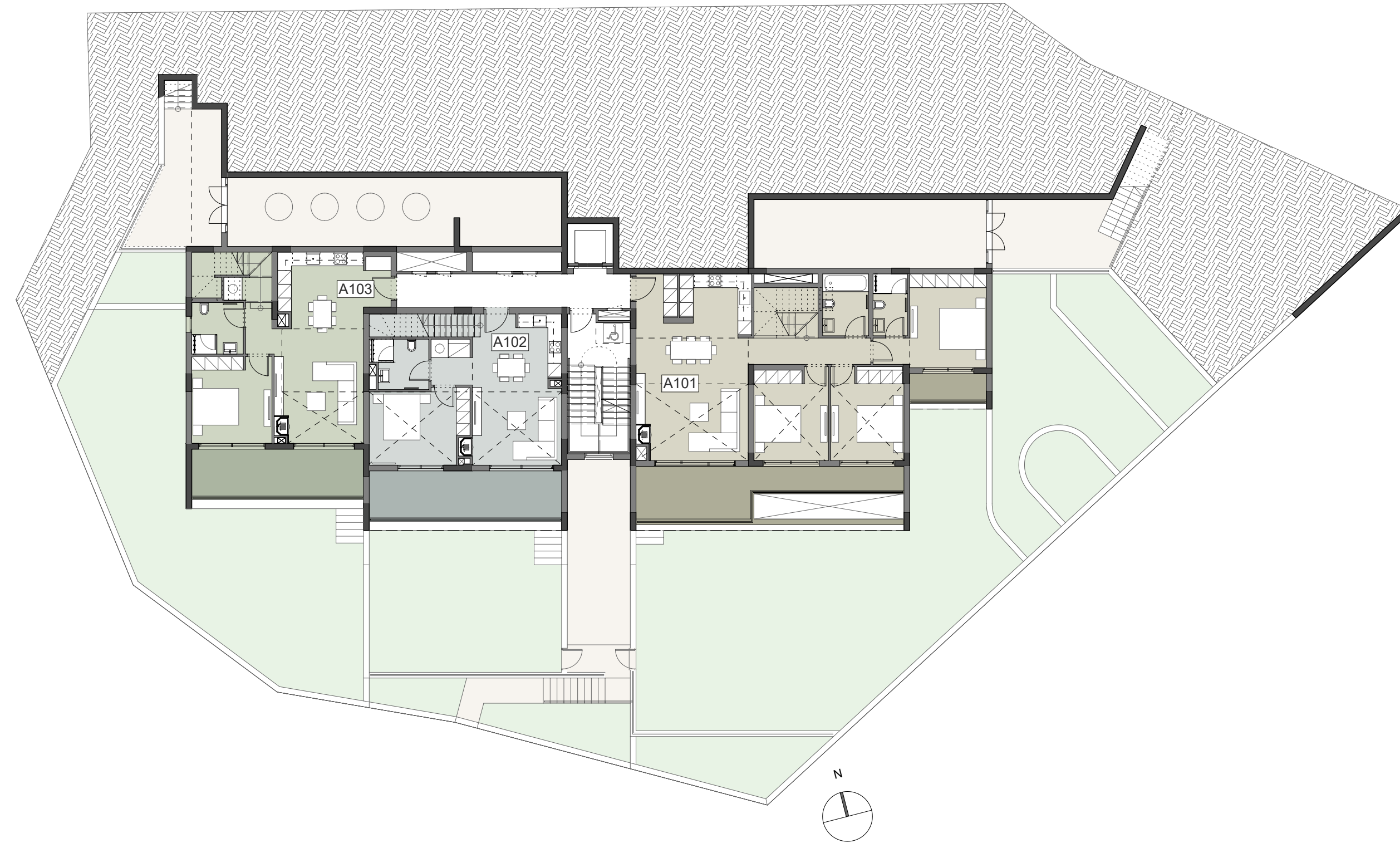
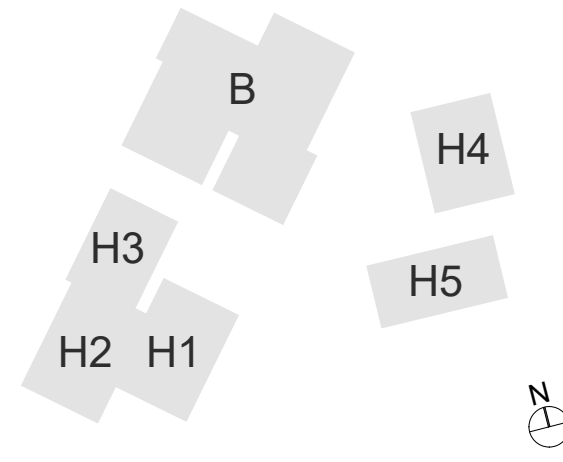
Plot 1909



Block A

General Layout - Level -01

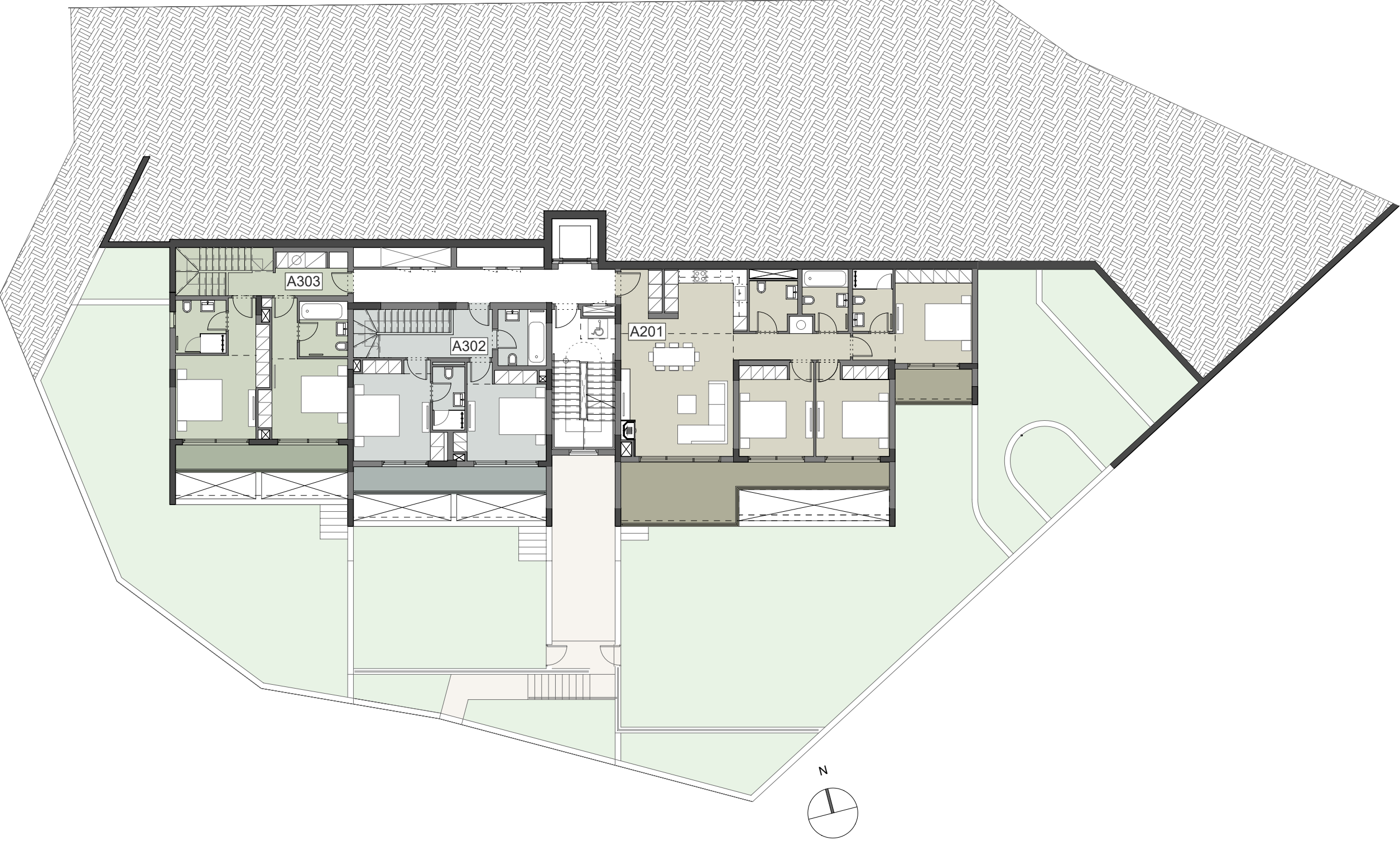
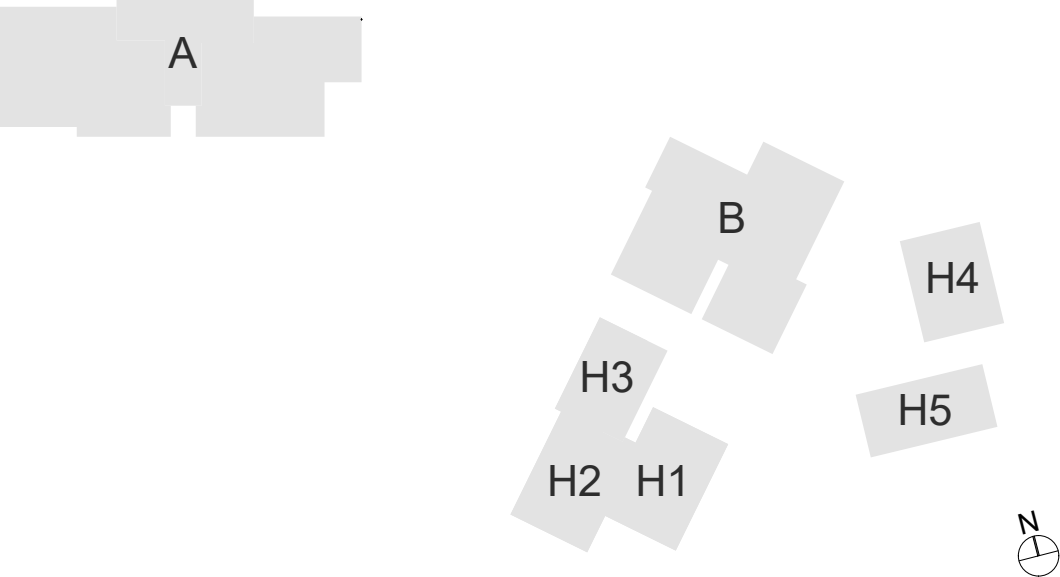
Plot 1909



Block A

General Layout - Level -02

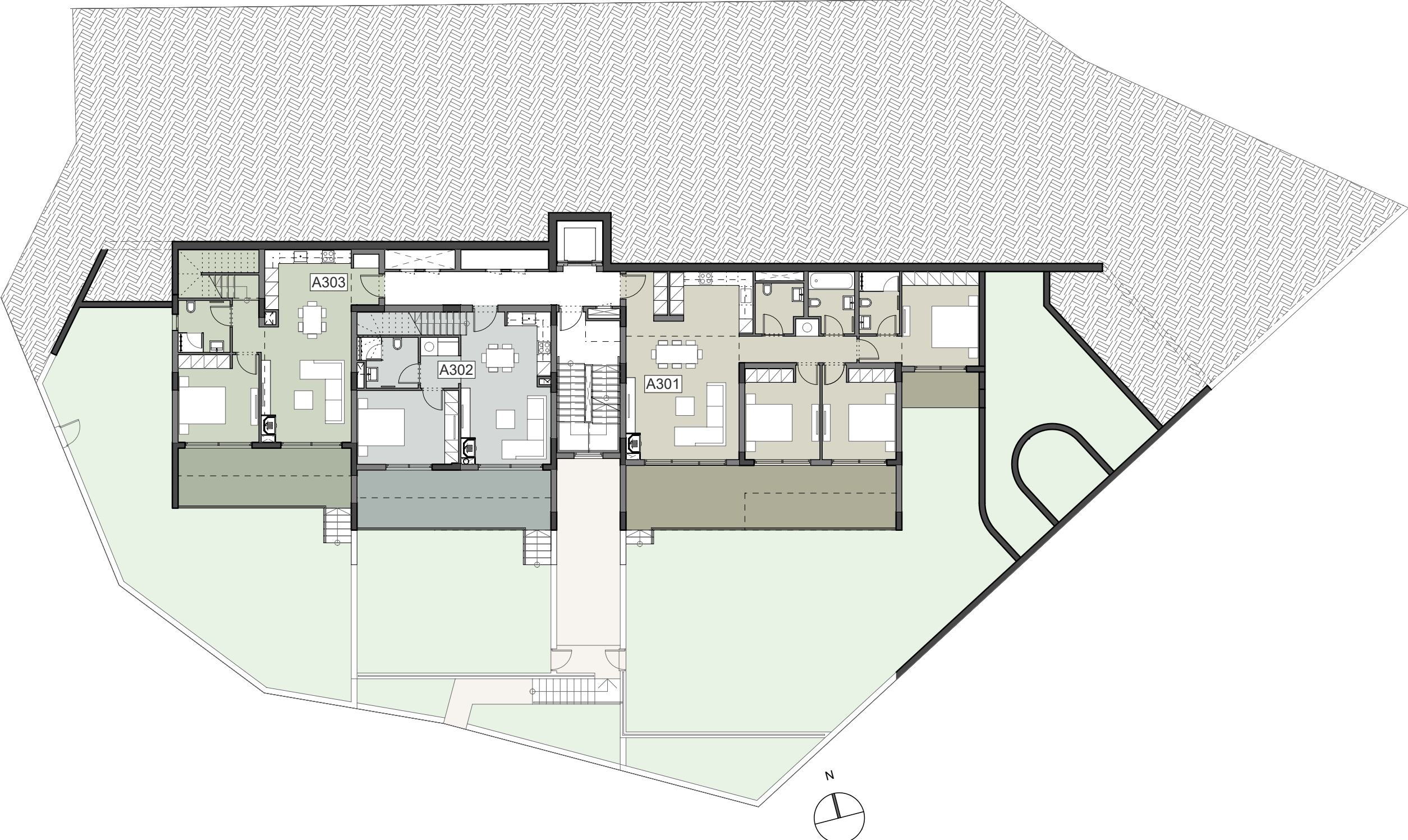
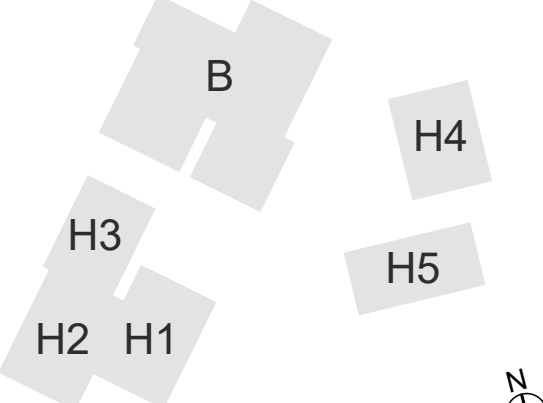
Plot 1909



Block A

General Layout - Level -03

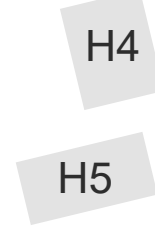
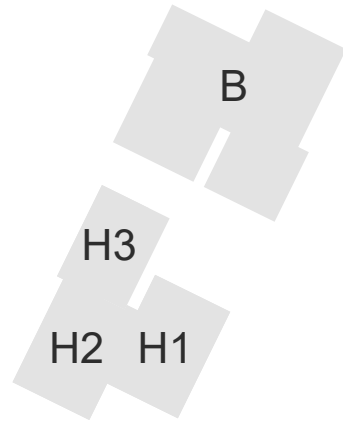
Plot 1909



Block B & HOUSES H1,H2,H3

General Layout - Level -00

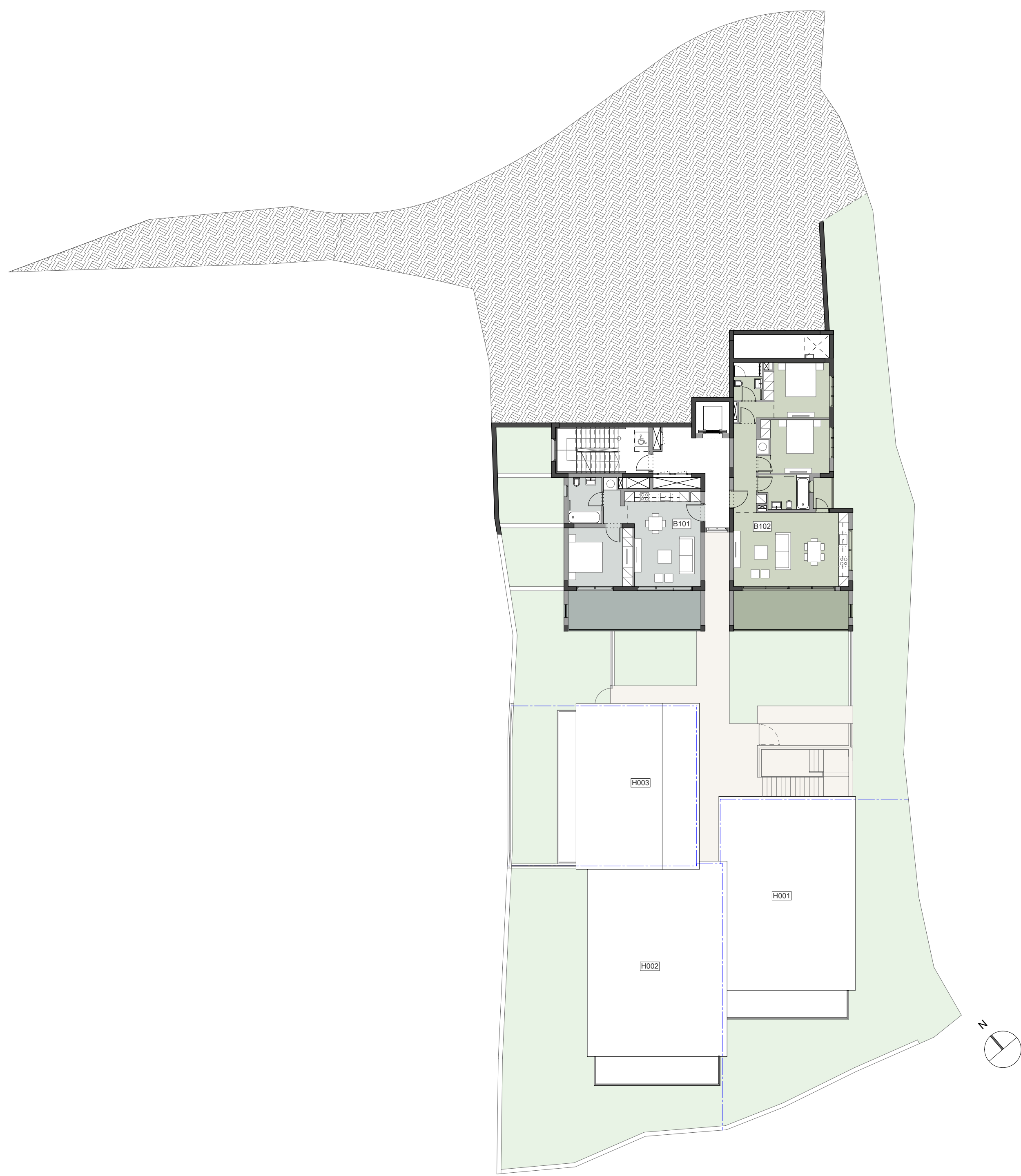
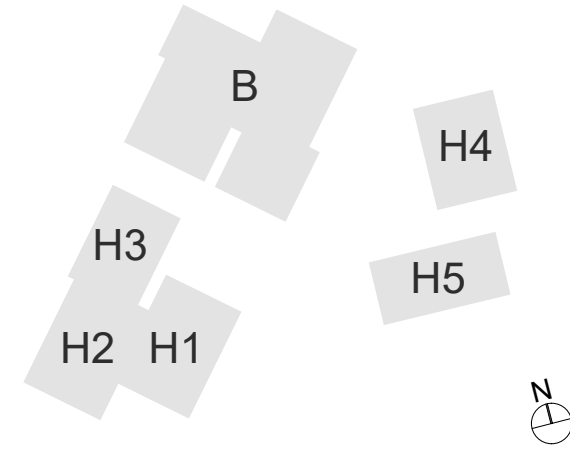
Plot 194



Block B & HOUSES H1,H2,H3

General Layout - Level -01

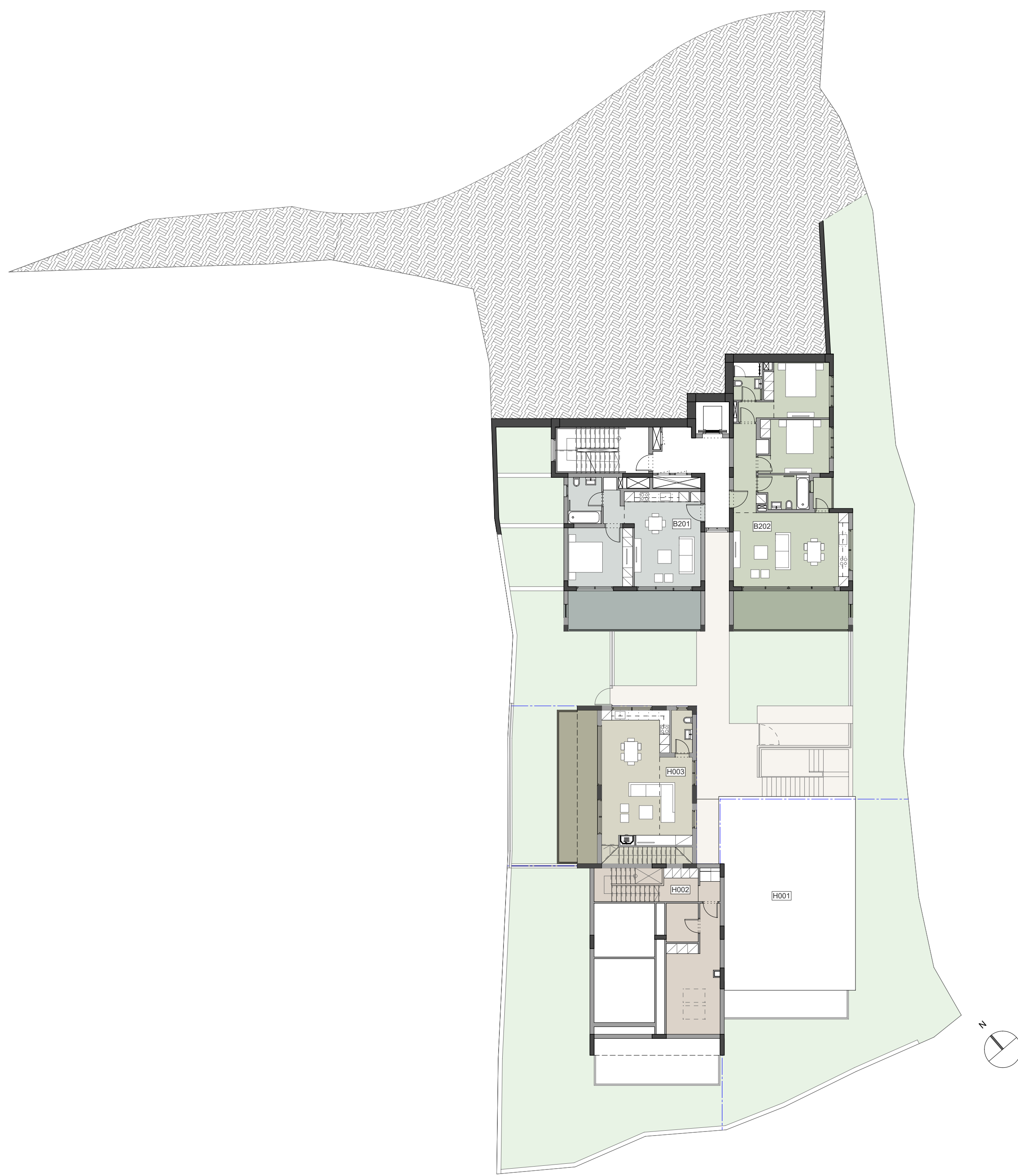
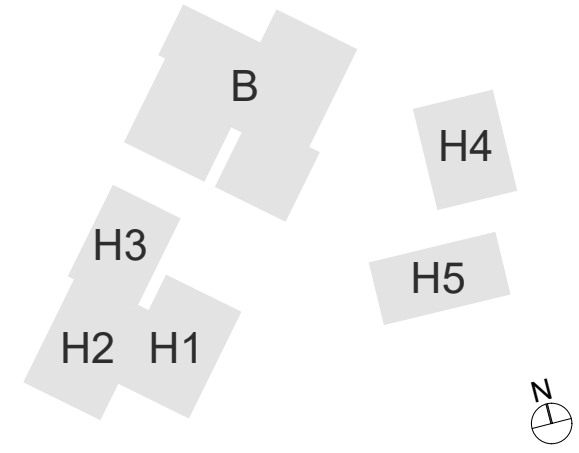
Plot 194



Block B & HOUSES H1,H2,H3

General Layout - Level -02

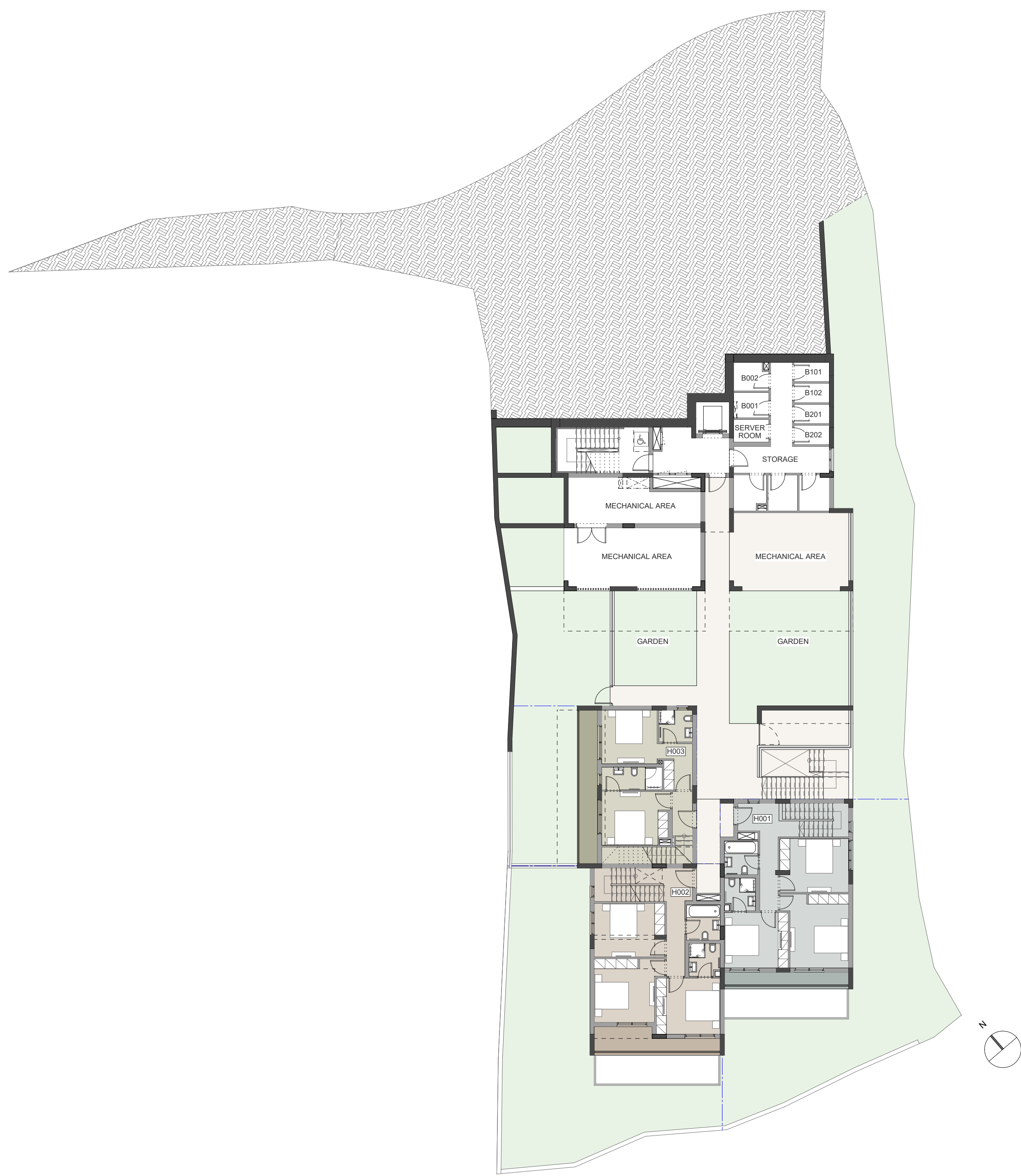
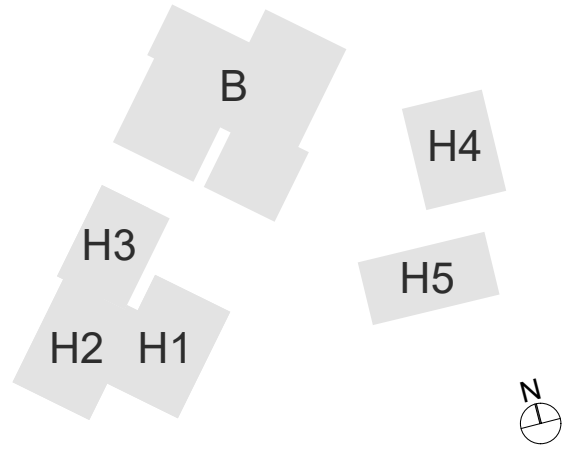
Plot 194



Block B & HOUSES H1,H2,H3

General Layout - Level -03

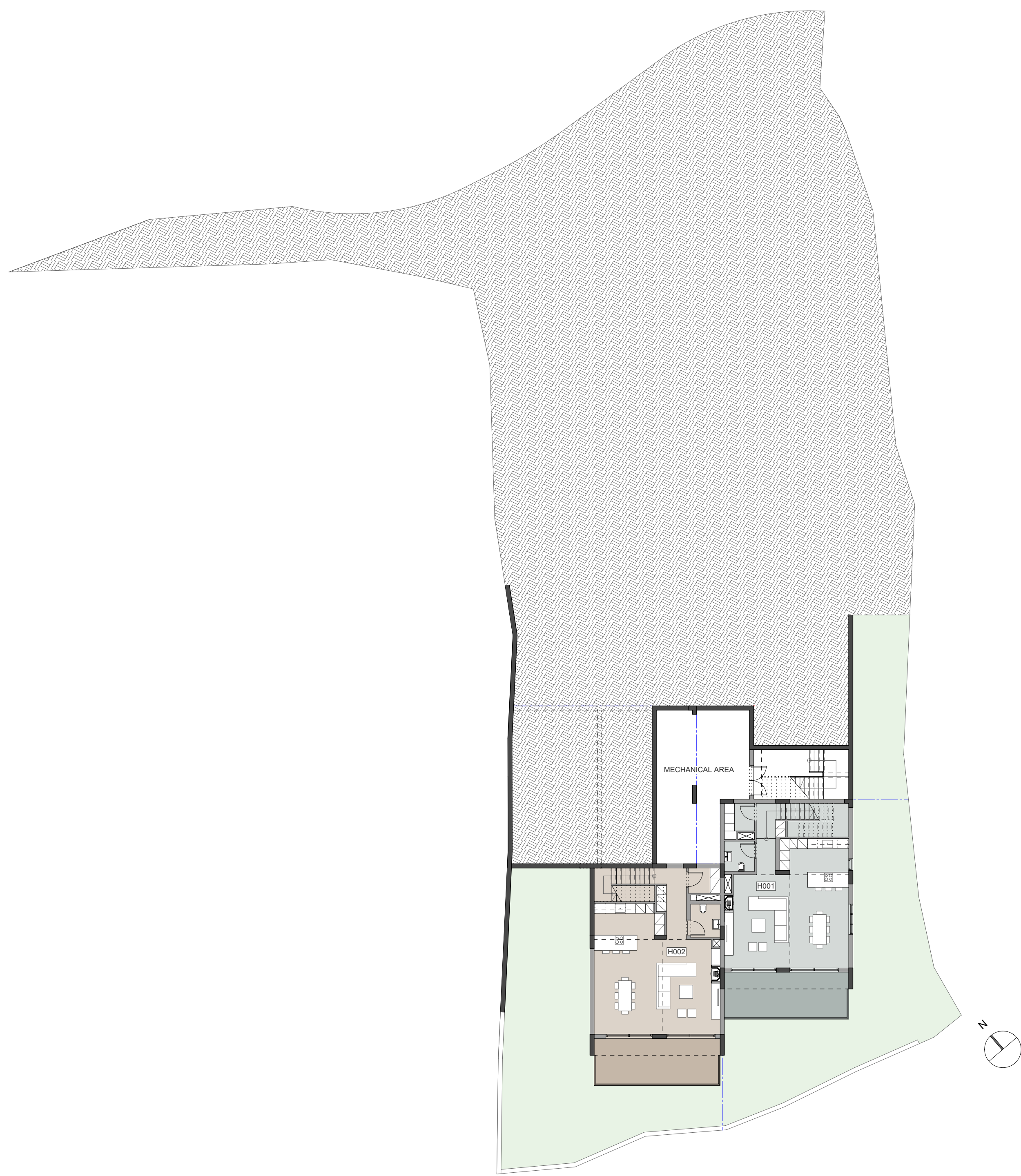
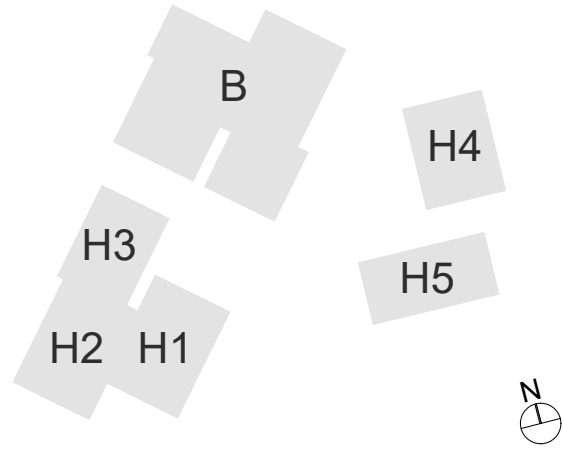
Plot 194



Block B & HOUSES H1,H2,H3

General Layout - Level -04

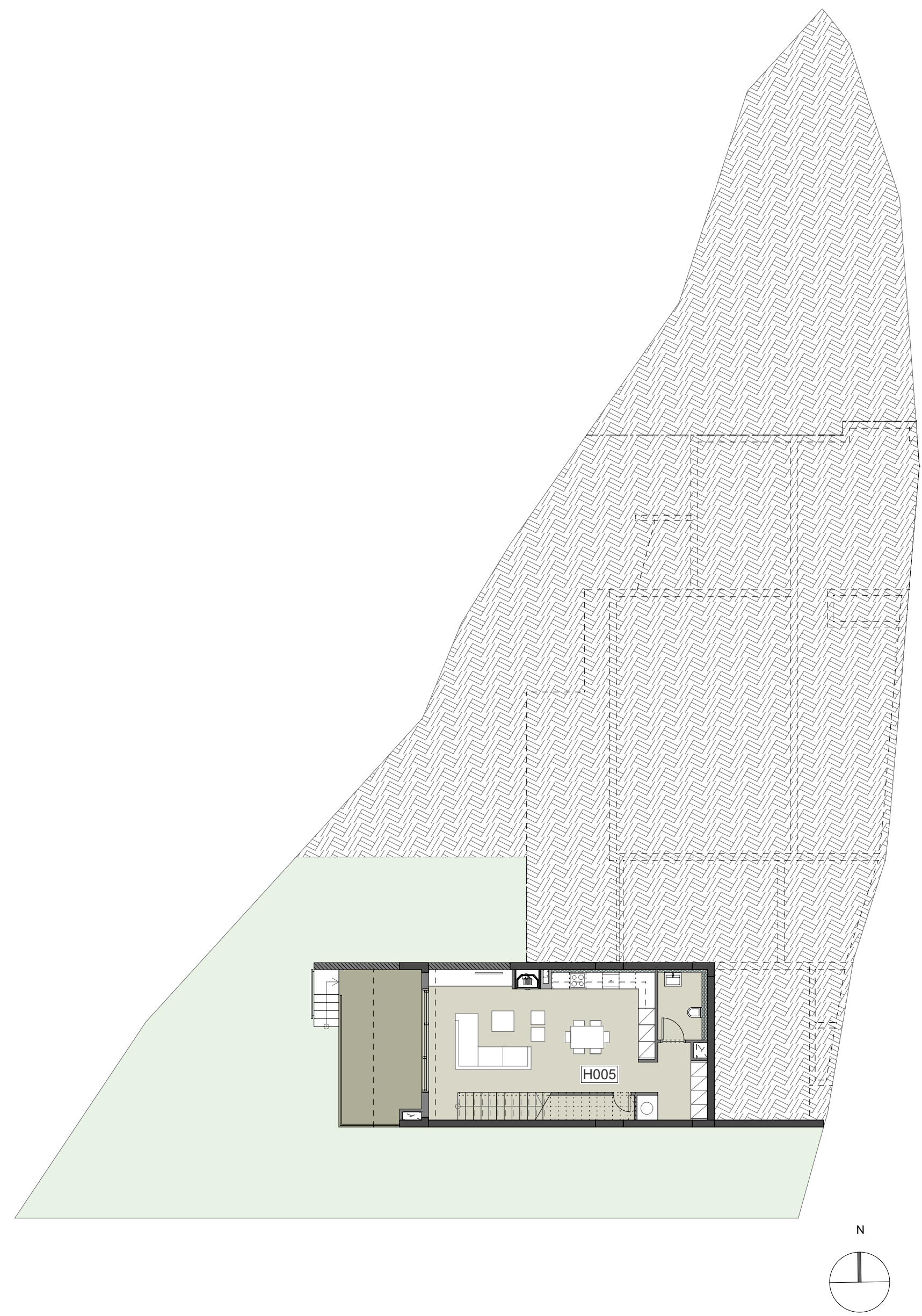
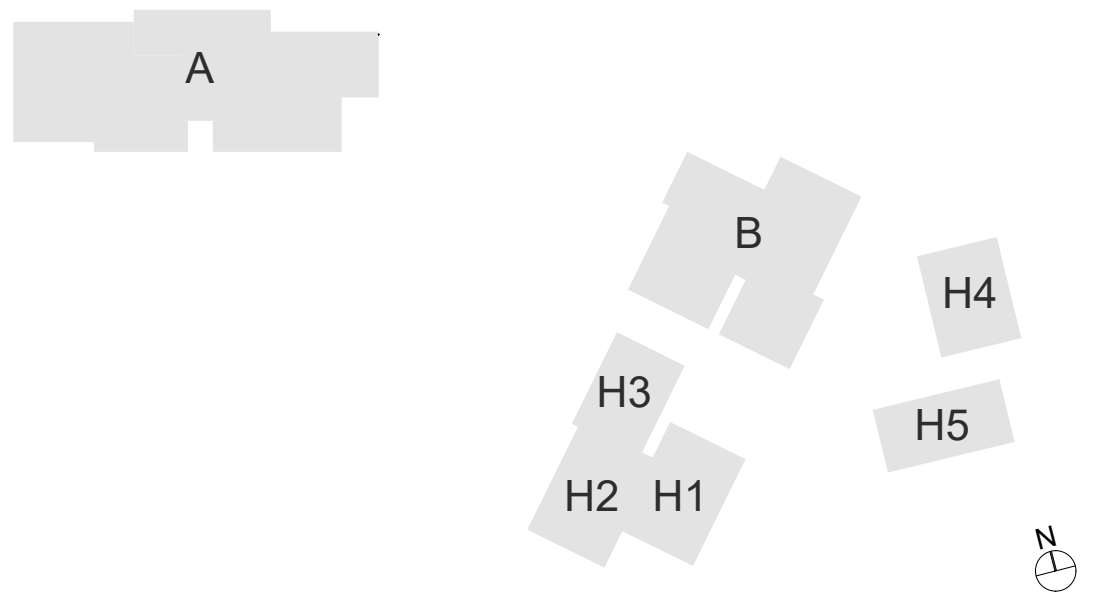
Plot 194



Houses H4 & H5

General Layout - Level -01

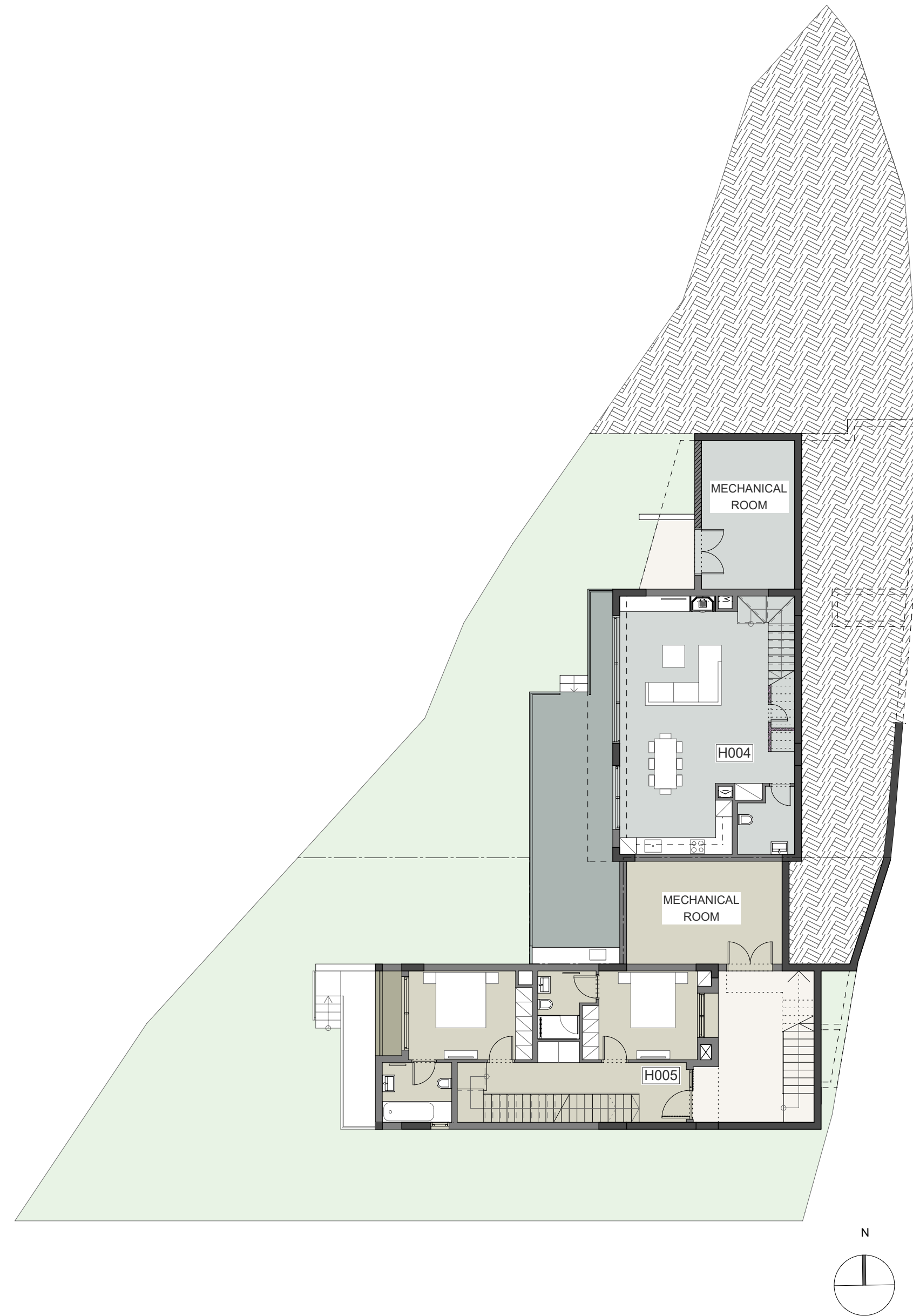
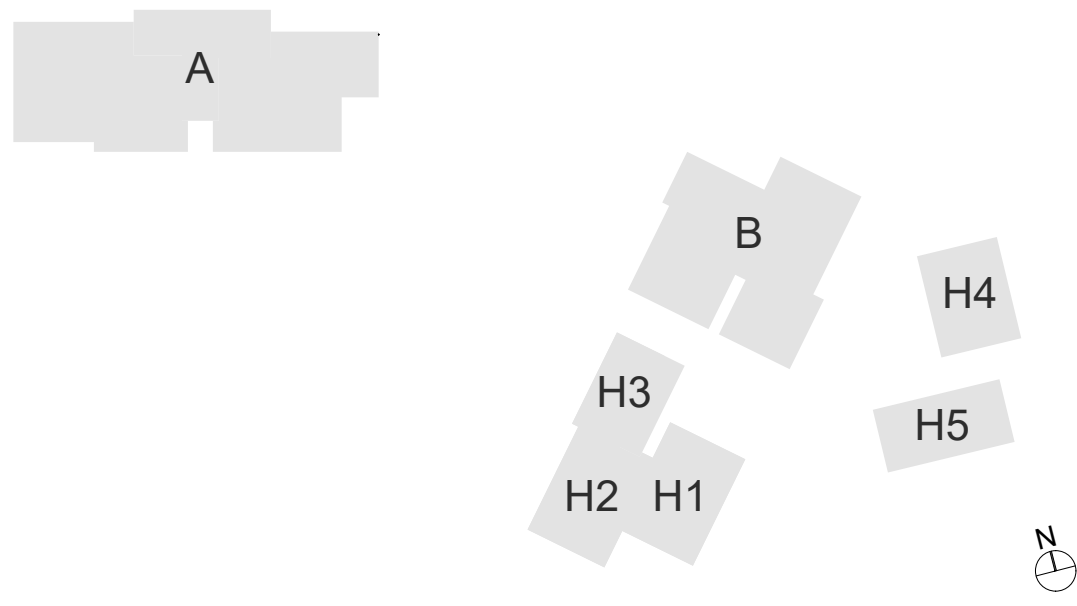
Plot - 195 , 661



Houses H4 & H5

General Layout - Level 00

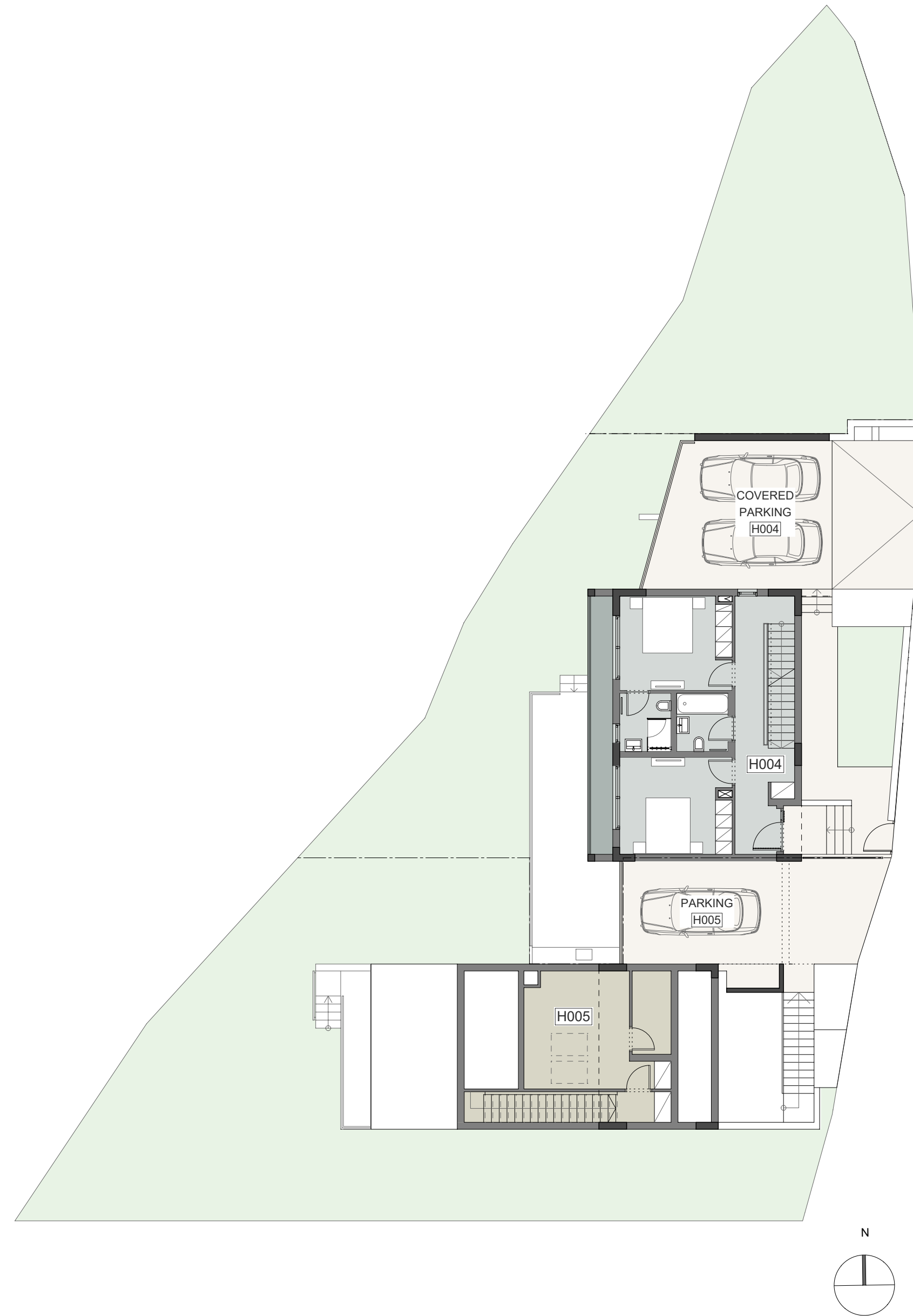
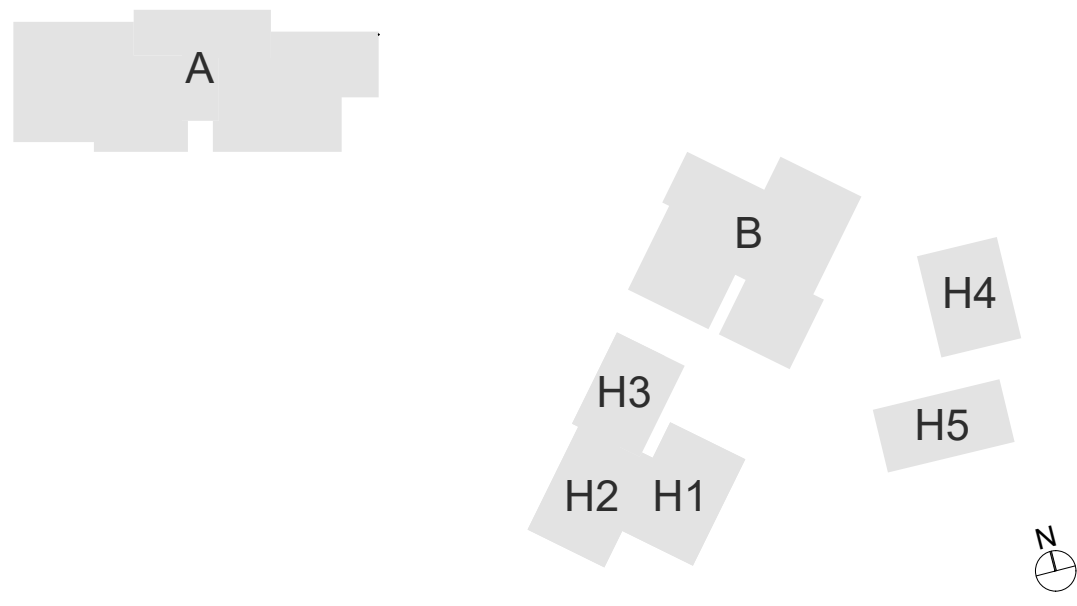
Plot - 195 , 661



Houses H4 & H5

General Layout - Level +01

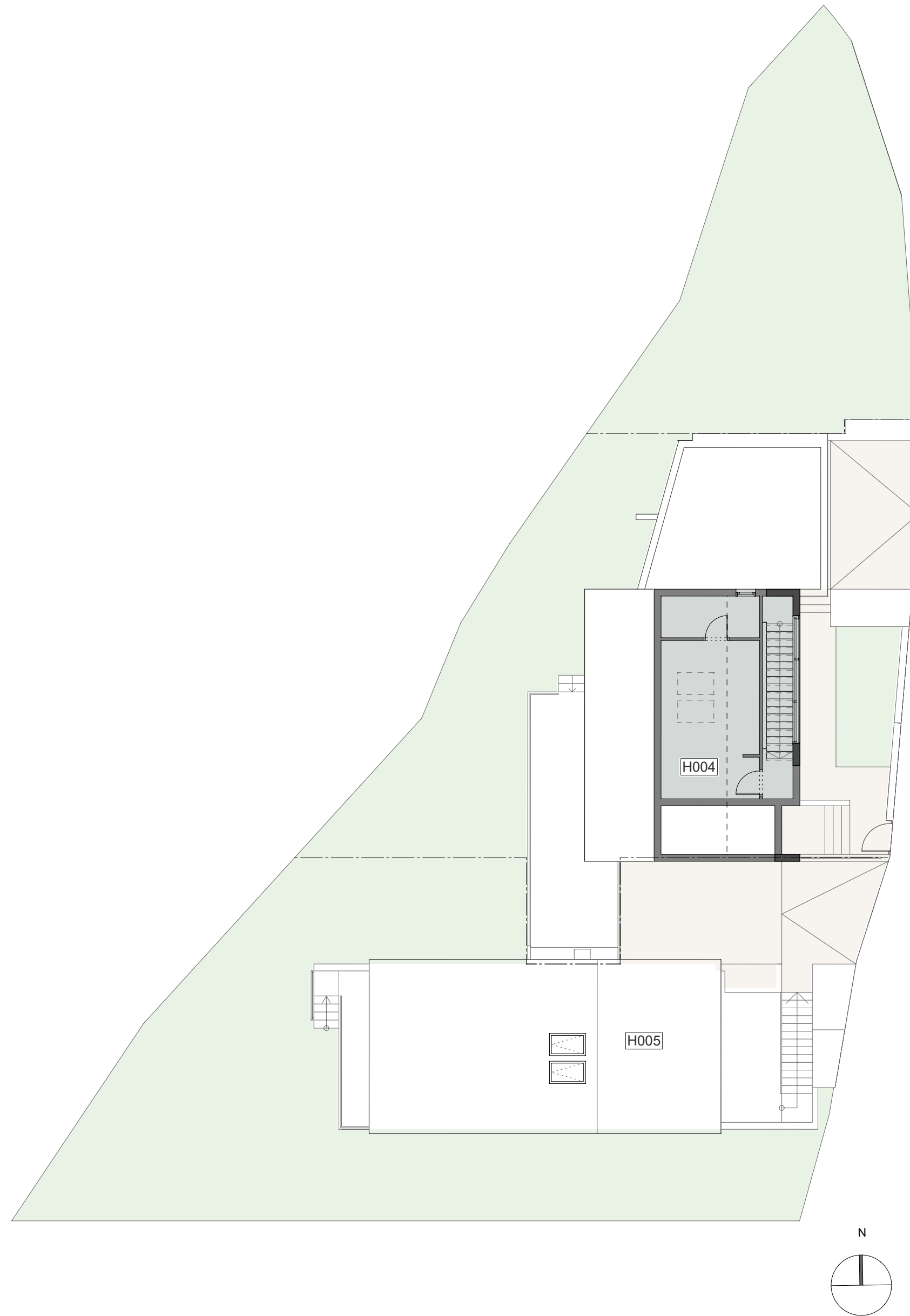
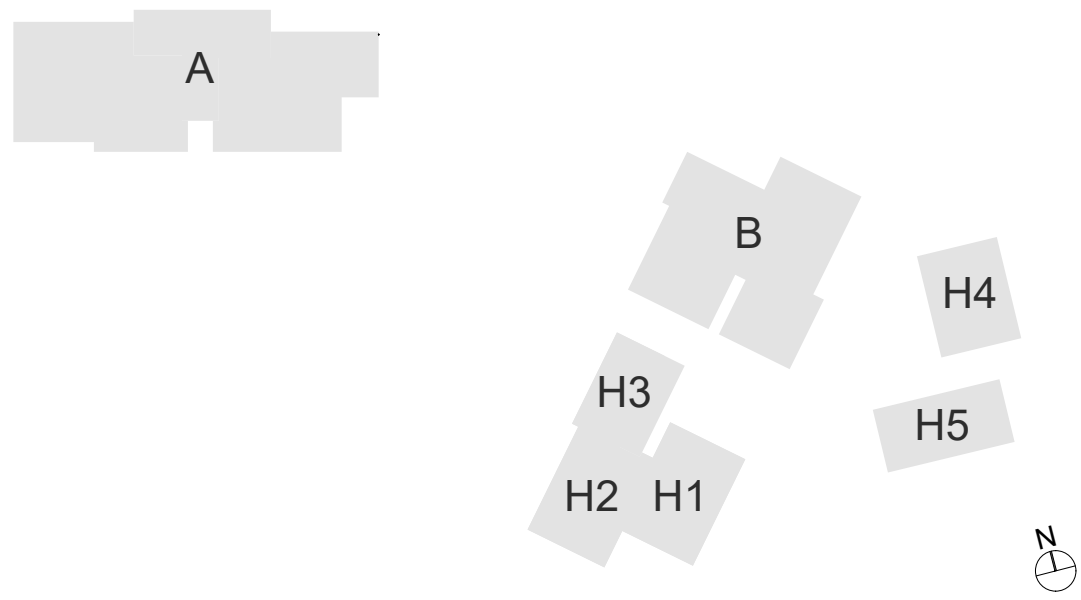
Plot - 195 , 661



Houses H4 & H5

General Layout - Level +02

Plot - 195 , 661





Texture
Area
Location
 Material Type / Brand / Color
 Treatment
 Dimensions in mm

Aluminium systems



Alumi / Sahara Night 520

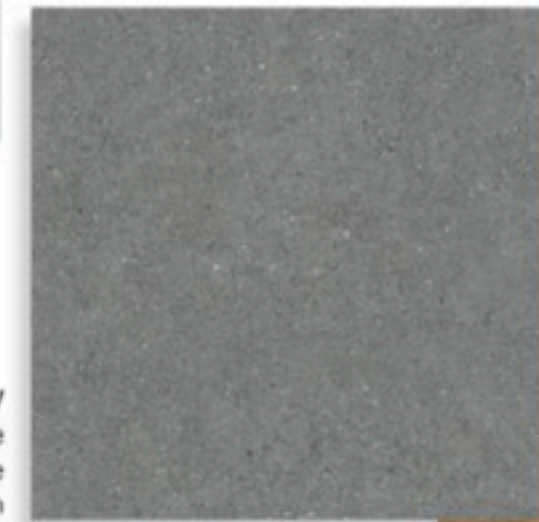


Lobby Area / Exposed Concrete Wall /

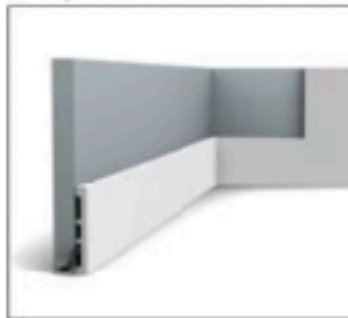


Storage
 Ceramic Tiles / Vitacer Advance Grey
 450x450mm

Verandas / Ceramic Tiles / Cifre Granite Grey Po Matte 600x600x9 mm



Polyurethane foam



Skirting
 Plinth Orac / White Color
 102 mm

Living, Kitchen & Bedrooms / Glued Parquet - Semi solid Lindura HD400/8936 Elegance Specified



Kitchen / Backsplash
 Marble / Greek Arabescato
 20 mm

Bathrooms Floors & Walls
 Natural Stone / Oryx White Oman / Honed
 600x600x 20 mm

Kitchen / Counter top
 Artificial Granite / White Color
 20 mm

Private pool / Roof Garden floor
 Cifre reload white mate
 300x600x10 antislip

Internal Doors, Wardrobes & Kitchen /
 MDF / White matte laquered

Common Pool Area/ Frame Coping Around Pools & Pool Showers / Internaly
 Marble / Ligourio light Sandblasted & Brushed

Pool Area / Marble / Sinai Pearl Sandblasted & Brushed
 600x600x20 mm (Common)
 500x500x30 mm (Private)

Window Sill/ surface under the coping Concrete Fair Face
 Marble / Pietra Serena
 30mm

Window Sill/ surface under the coping White Grafialo
 Marble / Pigon
 30 mm

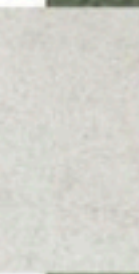
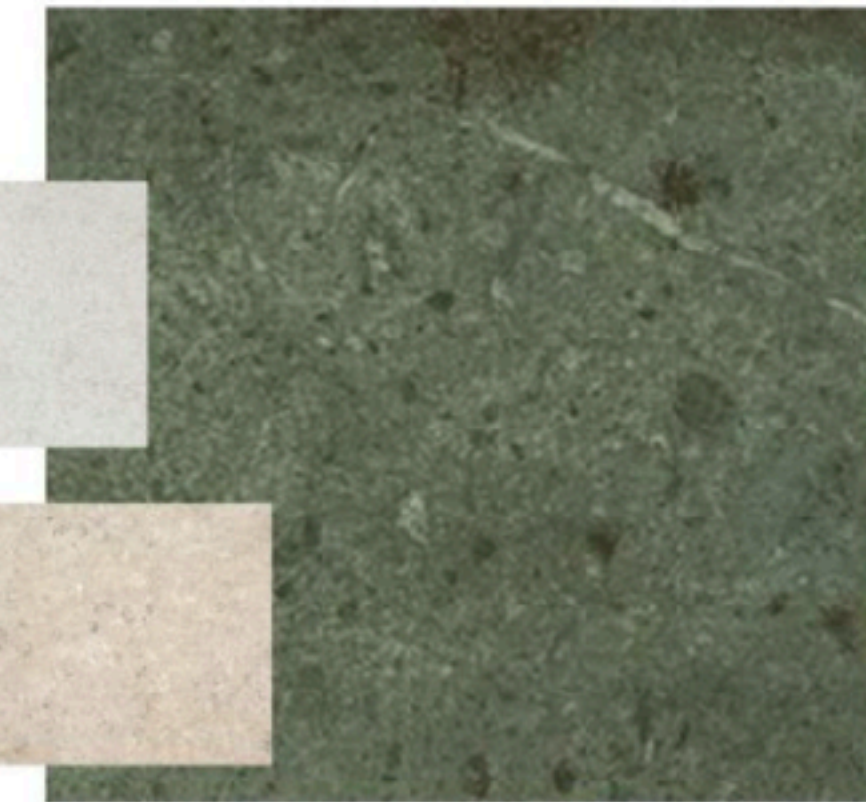
Window Sill/ surface under the coping Grey Grafialo
 Marble / Alvery
 30 mm



Common & Private BBQ Area / Countertop & Backsplash
 Granite / Nero Asoluto Leather
 20 mm



Stairs, Corridors, Lobbies, Elevator floor & Border
 Natural Stone / Oryx White (Oman)
 Honed
 600x600x20 mm (Corridor & Lobbies)
 Slabs (Elevator & steps)



Ceramic Tiles

Wood

Marble & Granite

Finishes Specification - Apartments - Elegance

Structure & Walls

- Reinforced concrete foundation and frame, earthquake-resistant (Eurocodes).
- External walls with plaster bricks, thermal insulation, and zinc cladding.
- Internal walls finished with plaster, bricks, or dry-wall system.
- External wall treatment includes thermal insulation, adhesive mortar, fiber mesh, and decorative plaster.
- Internal wall coating with spatula and emulsion paint.

Floors

- **Kitchen:** parquet.
- **Living room & corridor:** parquet.
- **Bedrooms:** parquet.
- **Bathrooms:** stone.
- **Verandas:** non-slip tiles.
- **Storage rooms:** tiles.

Doors & Windows

- Aluminium thermal windows with double-glazed thermal glass.
- EU-manufactured interior doors.
- EU-manufactured built-in wardrobes.
- Entrance security door: reinforced, fire-rated (30 min), veneer finish, door stopper.
- Main entrance security door with keypad intercom and camera.

Kitchens & Bathrooms

- EU-manufactured kitchen cabinets; white artificial countertop, marble backsplash, stainless steel sink.
- European sanitary ware: built-in toilets (soft-closing), washbasins with vanity unit, bathtubs/showers with screens, premium mixers.

Mechanical & Electrical

- Under-floor heating system (water).
- Concealed A/C units in all rooms.
- Full electrical installation with EU-brand switches/sockets, spotlights in corridors and bathrooms, provisions for chandeliers.

Plumbing

- Hot and cold water in high-pressure pipes; cold water tank and pressure pump included.



Finishes Specification - Houses - Elegance

Structure & Walls

- Reinforced concrete foundation and frame, earthquake-resistant.
- External walls with plaster bricks, thermal insulation, and zinc cladding.
- Internal walls with plaster, bricks, and/or dry-wall system.
- Exterior wall coating with thermal insulation, adhesive mortar, fiber mesh, and decorative plaster.
- Internal coatings finished with spatula and emulsion paint.

Floors

- **Kitchen:** parquet.
- **Living room & corridor:** parquet.
- **Bedrooms:** parquet.
- **Bathrooms:** stone.
- **Verandas:** non-slip tiles.

Doors & Windows

- Aluminium thermal windows with double-glazed thermal glass.
- EU-manufactured entrance door.
- EU-manufactured interior doors.
- Built-in EU-manufactured wardrobes.

Kitchens & Bathrooms

- EU-manufactured kitchen cabinets with white artificial countertop, marble backsplash, stainless steel sink.
- European sanitary ware: built-in toilets (soft-closing), vanity units, showers with screens, bathtubs, and mixers.

Mechanical & Electrical

- Concealed A/C units in all bedrooms, living room, and kitchen.
- Under-floor heating system.
- EU-brand electrical switches and accessories; spotlights in corridors and bathrooms; provisions for chandeliers.

Plumbing

- Hot and cold water through high-pressure pipes; cold water tank and pressure pump included.



: blackpine

bbf®

HEADQUARTERS

Limassol Ambelakion 28 Street,
P. Germasogeia 4046 Limassol,
Cyprus

info@bbf.com

+357(25)-315-300