

FOR SALE

€2,785.000 VAT PAID

i HOME

APARTMENT A701

iHOME TOWER A - Apartment No. A701

Apartment №	Floor	Description	Bedroom	Internal Area m ²	Covered Veranda m ²	Storage	Parking	Common Area m ²	Total Area m ²	Price €
A701	7	Apartment	3	130	62	7,5	1	89	288.5	2,785,000 VAT PAID

The apartment is including the following:

- **Central heating with water under floor heating connected to the VRV System;**
- **Air-conditioning VRV system with very high coefficient of performance will be used for cooling system with concealed ceiling units with elegant grilles;**
- **All tiles are supplied from Atlas Concorde;**
- **Kitchens are supplied by Scavolini, the most well-known kitchen brand from Italy;**
- **Bathrooms Model Aquo/Rivo are supplied by Scavolini;**
- **External security fireproof door/Eterea frameless internal doors;**
- **Storage in the underground.**

➤ FOR I HOME VIDEO CLICK [HERE](#)

A701





EXTENSIVE UP-MARKET SERVICES & FACILITIES

AS A RESIDENT AT iHOME, YOU HAVE
ACCESS TO FACILITIES THAT MAKE THE
EXPERIENCE OF LIVING HERE MORE THAN
SATISFYING

- GYM FOR RESIDENTS
- LOUNGE & ENTERTAINMENT AREA
- SECURED GATED ENTRANCE
- LOBBIES WITH 2 LIFTS PER TOWER
- APARTMENT RENTAL
MANAGEMENT AND MAINTENANCE
- SWIMMING POOL 32x10m
- POOL BAR
- KIDS PLAYGROUND
- SAUNA
- UNDERGROUND PARKING SPACE
- EN-SUITE STAFF ROOMS
OPTIONAL FOR RESIDENTS
- GUEST CHANGING ROOMS
- SUPERMARKET SERVICES
- GARDENING SERVICES
- HANDYMAN SERVICES
- LAUNDRY SERVICES
- TRANSPORT SERVICES
- BABYSITTING SERVICES
- BOAT TRIPS
- SWIMMING CLASSES



A man in a white shirt and dark pants stands near the teal building, looking towards the gate.

HOME



HOME

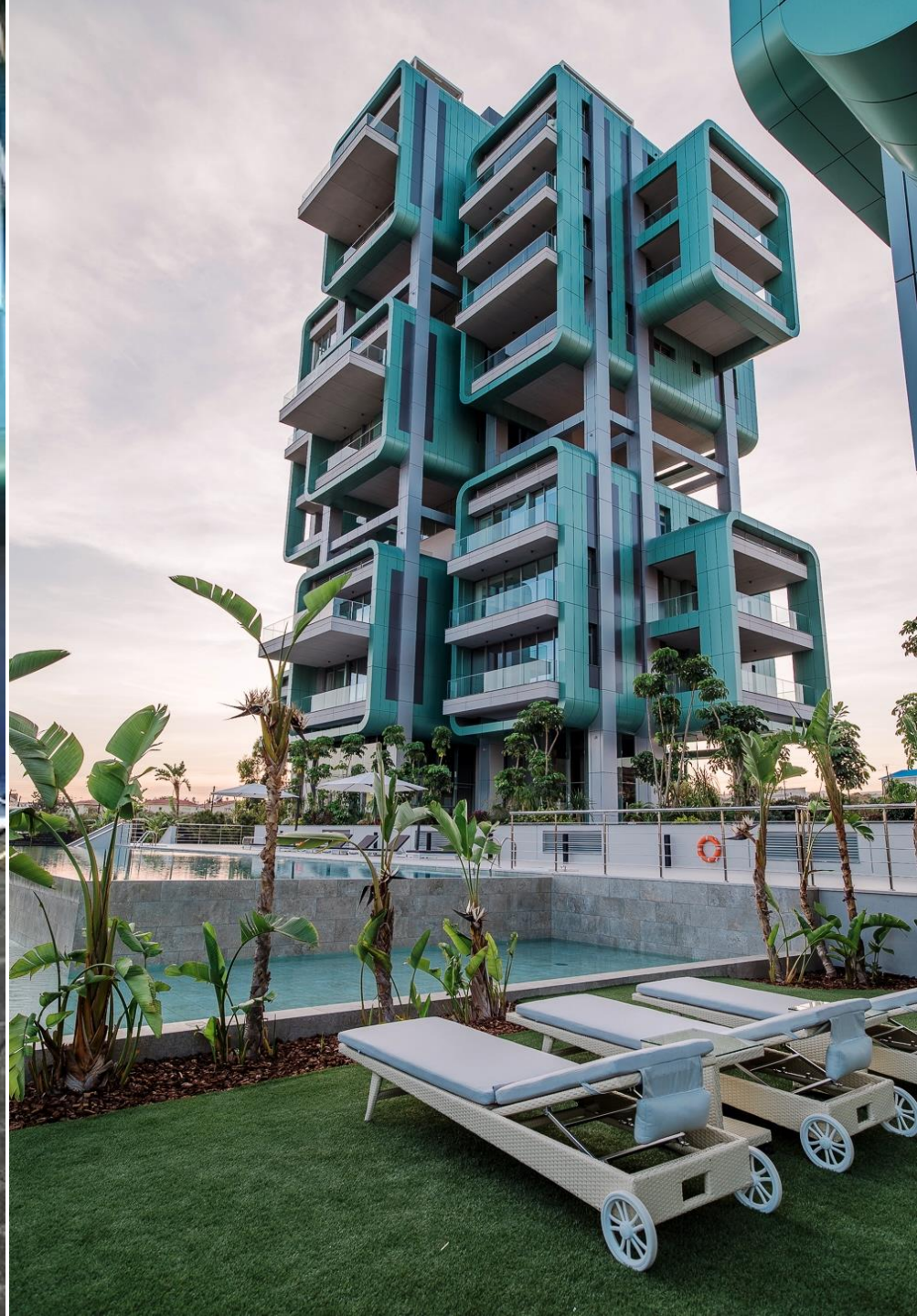


LOBBY



LOUNGE AREA





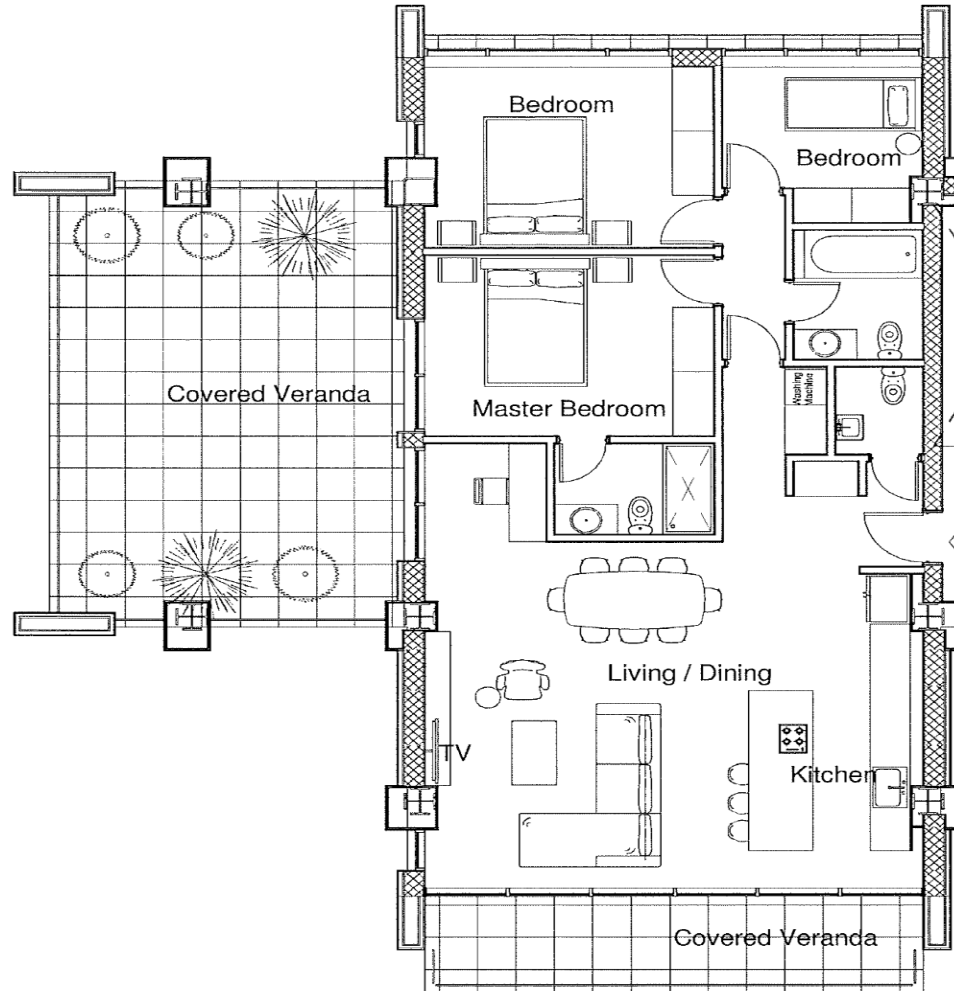


HEALTHY



FACILITIES

PLAN



FLAT A701



VIEWS





KITCHEN / LIVING AREA



BEDROOMS



- PORT
10 mins
- LIMASSOL MARINA
8 mins
- TOWN CENTRE
5 mins
- ST. RAPHAEL MARI
3 mins
- RESTAURANTS
1 - 2 mins
- SHOPPING
2 mins
- HIGHWAY
1 mins
- SPA
2 mins
- HOTELS
1 mins

i HOME

- RELAX
0 mins
- SEAFRONT
100m
- BANK
2 mins
- SCHOOLS
10 mins
- CLINICS
8 mins
- MALL
10 mins
- WATER PARKS
15 mins