



Developing What
Matters to You

FOR SALE
€2,450,000 VAT Paid

i HOME

APARTMENT A101

A101



iHOME TOWER A – APARTMENT A101

PRICE: €2,450,000 VAT PAID

Flat №	Floor	Description	Bedroom	Internal Area m ²	Covered Veranda m ²	Uncovered Veranda m ²	Total Gross Area m ²	Parking	Storage	Price € VAT PAID
A101	1	Apartment	3	122	47	18	195	1	1 (8 m ²)	2,450,000

The Apartment is including the following:

- Furniture
- Electrical Appliances
- Curtains
- Central heating with under floor;
- Air-conditioning VRV system with very high coefficient of performance will be used for cooling system with concealed ceiling units with elegant grilles;
- All top quality finishes from famous European brands Scavolini, Atlas Concorde etc.;
- Storage in the underground;
- 1 parking in the underground;
- Year of build: April 2018.

DTA Property Management:

Yearly Property Management is offered by the credible professionalism of our company to maintain all areas and spaces of the property in top condition after the delivery.

- Fully managed effortless income;
- Immediate income after delivery;
- Best possible rental returns;
- Re-sales services;
- Rental management;
- Property maintenance.

➤ **FOR I HOME VIDEO CLICK [HERE](#)**



Breath-taking views of
Mediterranean Sea and
Limassol city





EXTENSIVE UP-MARKET SERVICES & FACILITIES

AS A RESIDENT AT iHOME, YOU HAVE
ACCESS TO FACILITIES THAT MAKE THE
EXPERIENCE OF LIVING HERE MORE THAN
SATISFYING

- GYM FOR RESIDENTS
- LOUNGE & ENTERTAINMENT AREA
- SECURED GATED ENTRANCE
- APARTMENT RENTAL
MANAGEMENT AND MAINTENANCE
- LOBBIES WITH 2 LIFTS PER TOWER
- SWIMMING POOL 32x10m
- POOL BAR
- KIDS PLAYGROUND
- SAUNA
- UNDERGROUND PARKING SPACE
- EN-SUITE STAFF ROOMS
OPTIONAL FOR RESIDENTS
- GUEST CHANGING ROOMS
- SUPERMARKET SERVICES
- GARDENING SERVICES
- HANDYMAN SERVICES
- LAUNDRY SERVICES
- TRANSPORT SERVICES
- BABYSITTING SERVICES
- BOAT TRIPS
- SWIMMING CLASSES



GATED ENTRANCE

24h PROFESSIONAL SECURITY





LUXURIOUS LOBBY



**CONCIERGE
SERVICES**



**LOUNGE AREA FOR
RESIDENTS ONLY**



SWIMMING POOL 32 x 10m

KIDS PLAYGROUND



SUNDECK AREA

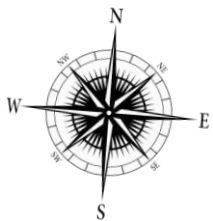
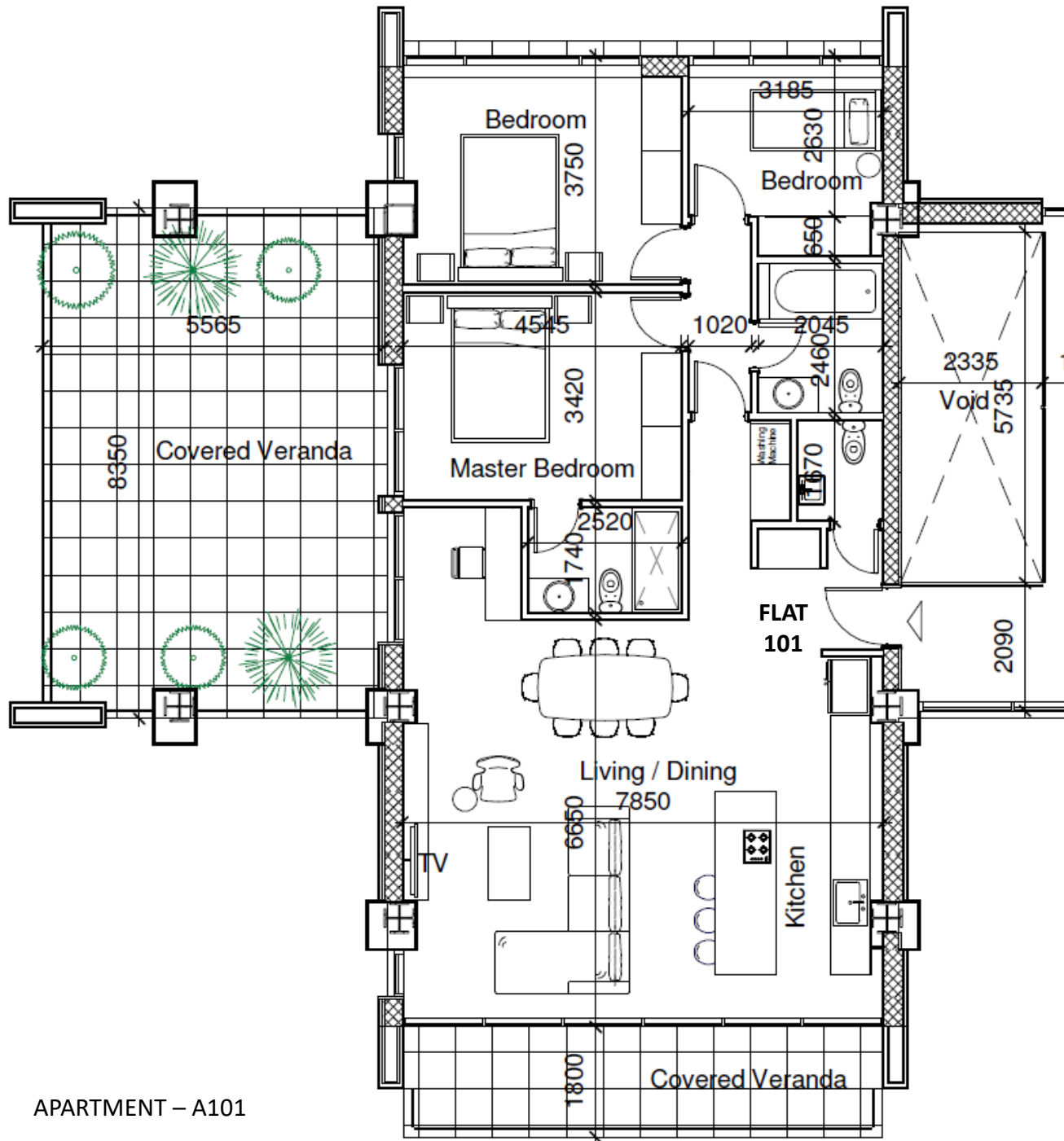




GYM - SAUNA - STEAM BATH

PLAN

1st FLOOR



APARTMENT – A101

BASEMENT

PARKING & STORAGE



Spectacular day/night views of
Mediterranean southern coastline
and Limassol city



VIEW FROM
SOUTH SIDE
VERANDA



LIVING / DINING / KITCHEN AREA



KITCHEN / LIVING AREA



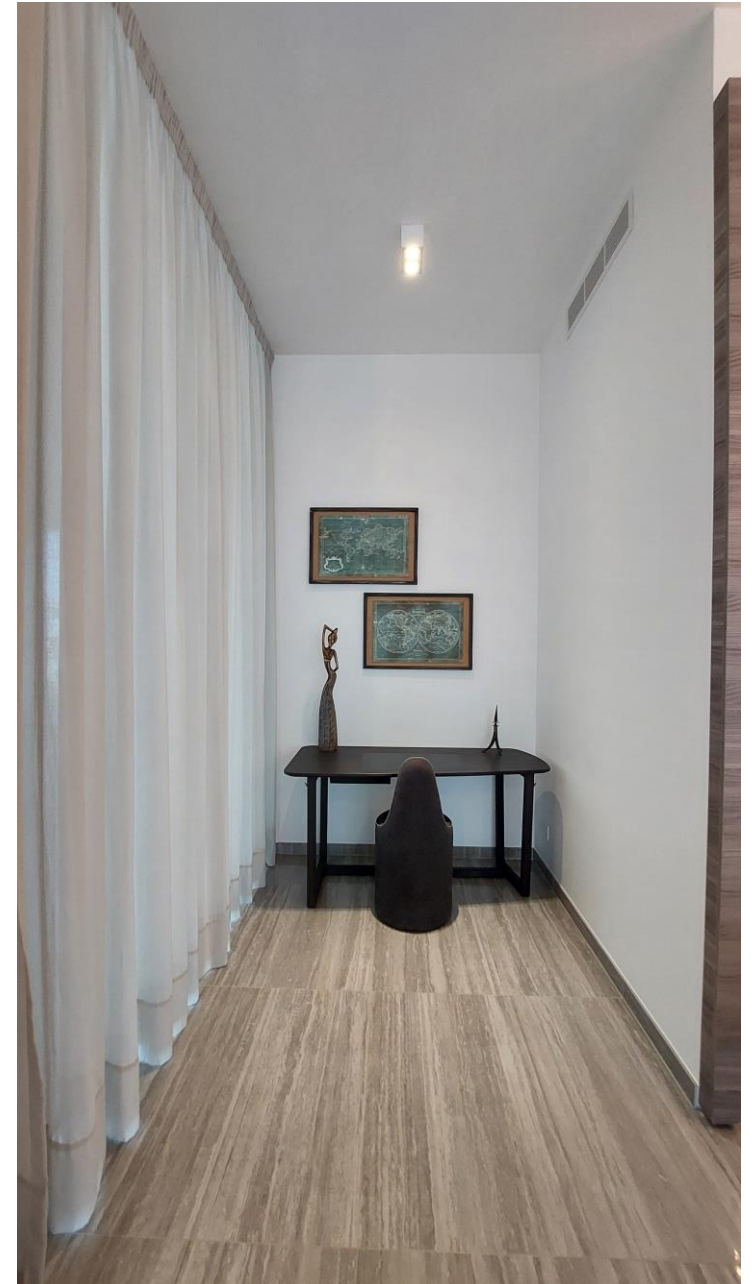
DINING / KITCHEN / LIVING AREA



DINING / KITCHEN / LIVING AREA



DINING / KITCHEN / LIVING AREA





KITCHEN



WEST SIDE VERANDA



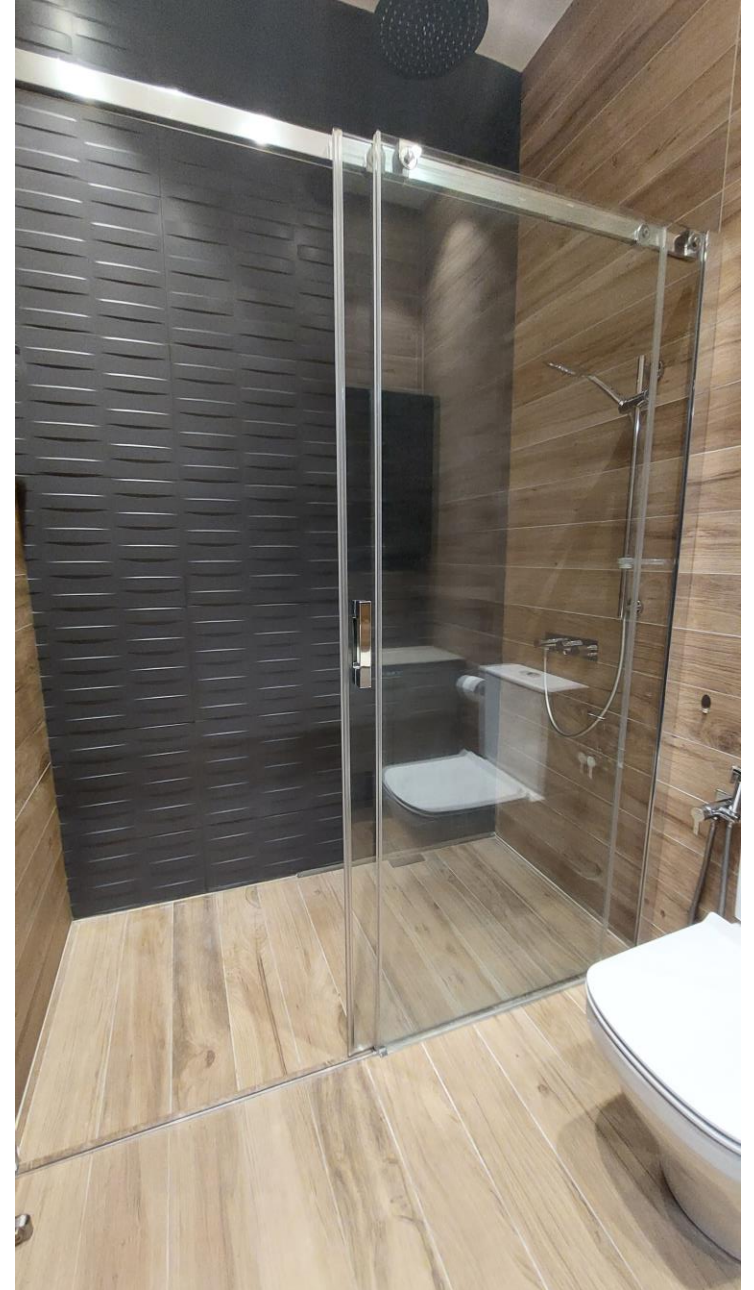
GUEST TOILET



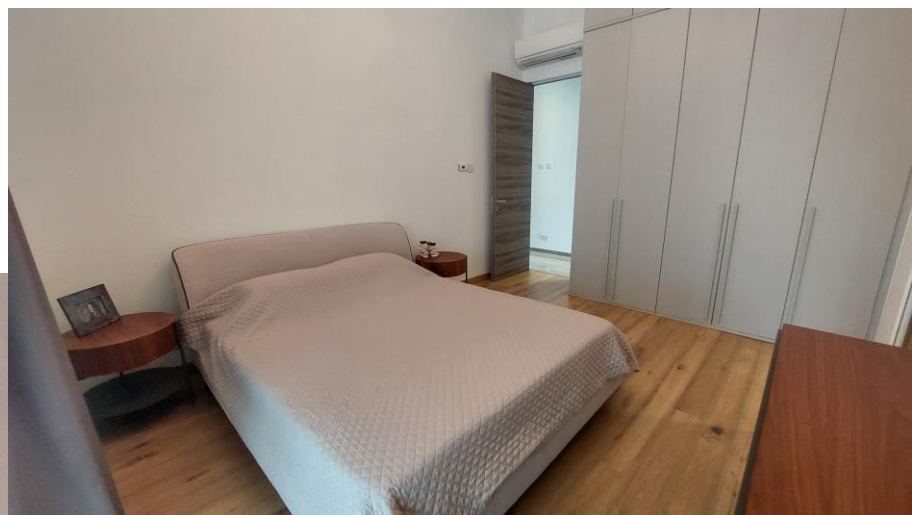
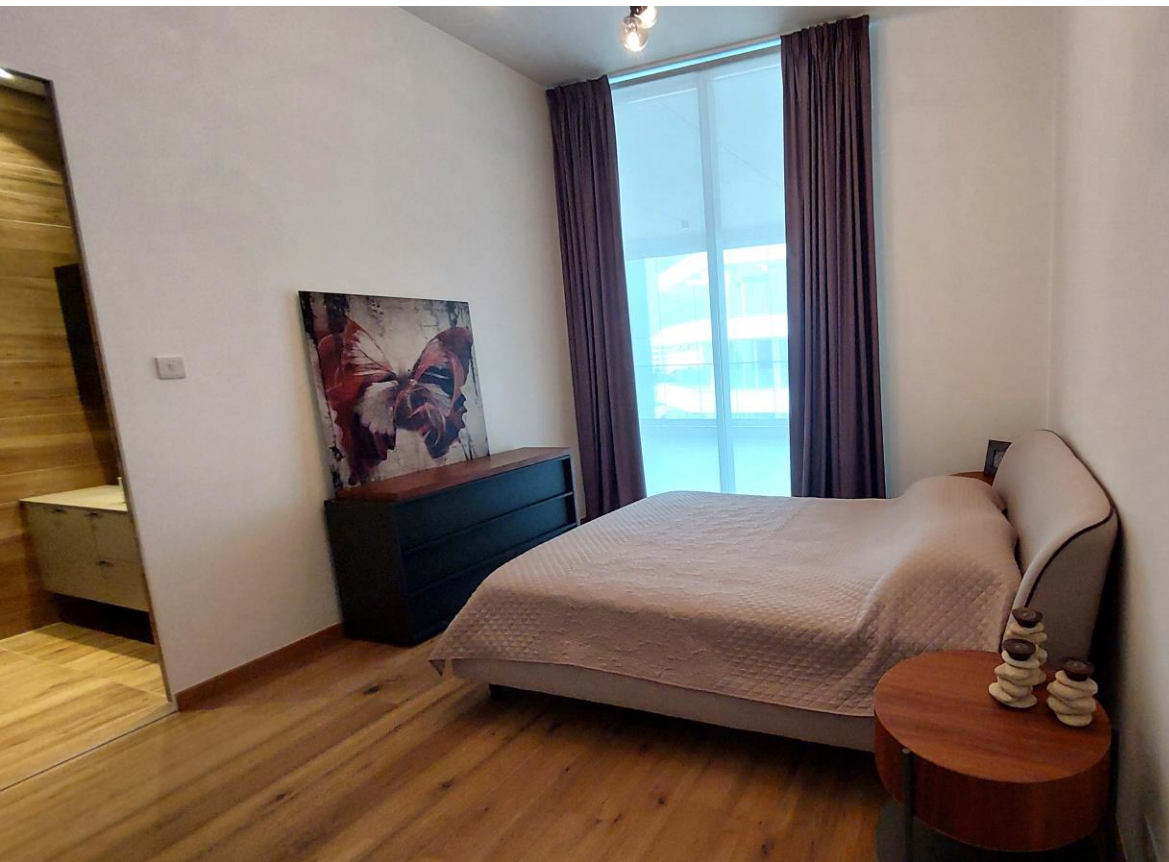
DRYER / WASHING MACHINE



MASTER BATHROOM



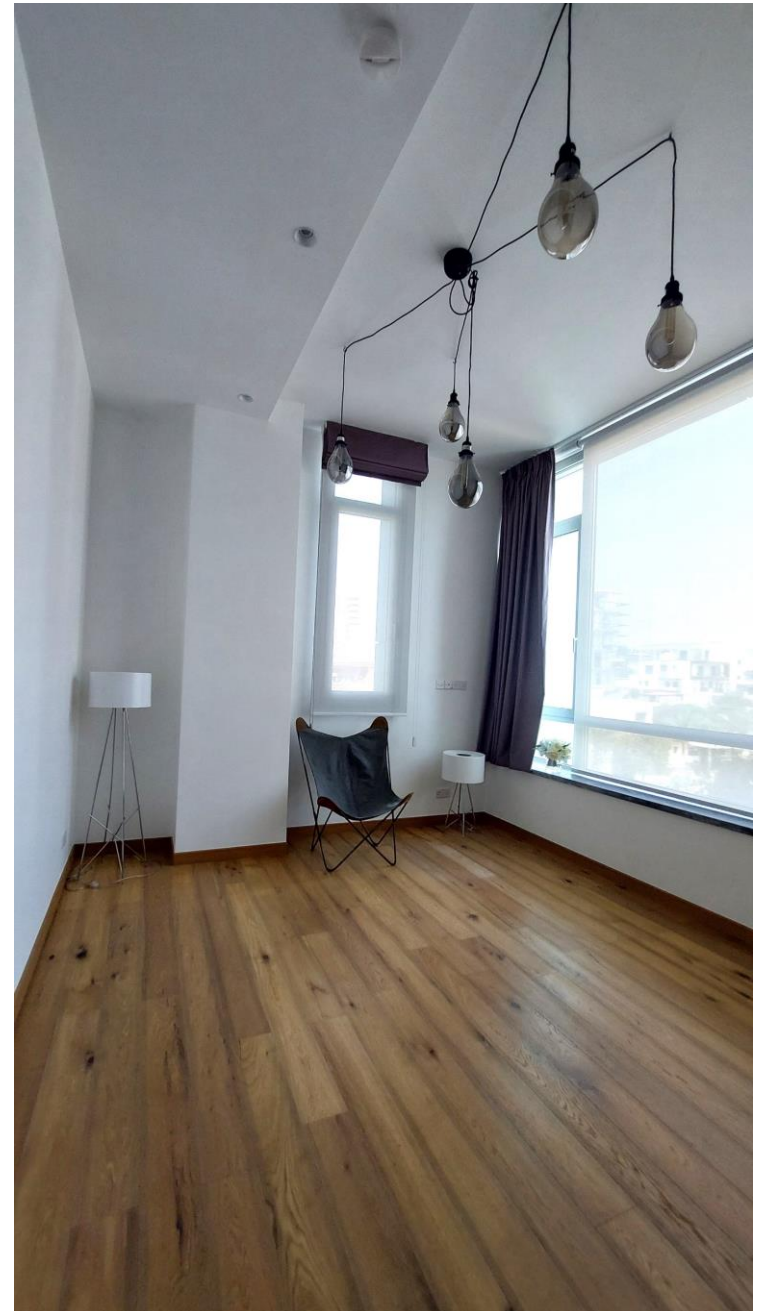
MASTER BEDROOM – EN SUITE



MASTER BEDROOM – EN SUITE



BEDROOM 2



BEDROOM 3





- PORT
10 mins
- LIMASSOL MARINA
8 mins
- TOWN CENTRE
5 mins
- ST. RAPHAEL MARI
3 mins
- RESTAURANTS
1 - 2 mins
- SHOPPING
2 mins
- HIGHWAY
1 mins
- SPA
2 mins
- HOTELS
1 mins

i HOME

- RELAX
0 mins
- SEAFRONT
100m
- BANK
2 mins
- SCHOOLS
10 mins
- CLINICS
8 mins
- MALL
10 mins
- WATER PARKS
15 mins

i H O M E

FOR MORE INFORMATION:

+357 80008383

+357 25822280

SALES@DTAGROUP.COM

WWW.DTAGROUP.COM



Developing What

Matters to You