

MONTES



TALA

The village of Tala is situated 7 km North of Paphos Town Center within a magical natural environment and with stunning sea views.

The boundaries of Tala village is connected with five different communities - Emba, Kissonerga, Tremithousa, Tsada and Koili. Additionally, the Coral Bay Beach is only 10 minutes drive away and the International Airport of Paphos is within 20 minutes drive.

Moreover, the community is divided in 4 main locations where is the Stefani Area, Lofos Area, Kamares Area and Melissovous Area.

Tala, is one of the most well maintained communities of Paphos city where retains a lovely character.

The main property types where existed in the community are detached houses/villas and there are some complex of apartments in the central / lower part of the village.



MONTES

A prestigious and elite development consisting of just 9, 3 bedroom luxury villas, offering panoramic sea views of Pafos and Peyia Bay.

The development is located in one of the most sought after locations in Pafos, Tala.

The properties consist of spacious interior areas and are designed to maximise the breath-taking sea and mountain views surrounding the project from all internal areas.

There are options for 3 and 4 bedroom villas, designed using modern architectural lines, while using locally sourced materials to blend in with the natural environment.

Located just 9 minutes from Pafos center, Tala golfcourse and the beach and just 4 minutes to the village center, Iris is the ideal location for investment or to live permanently.



MONTES

















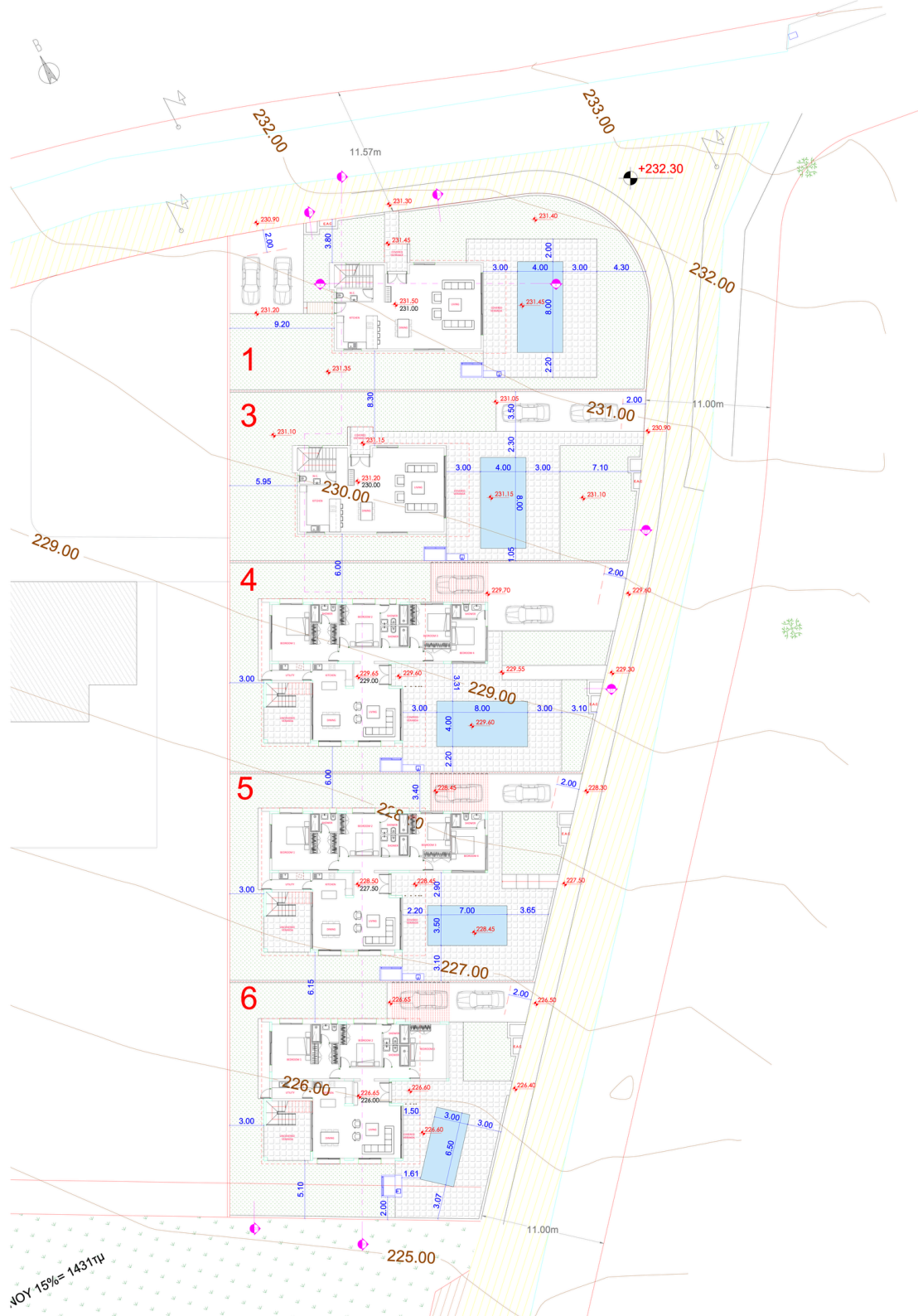






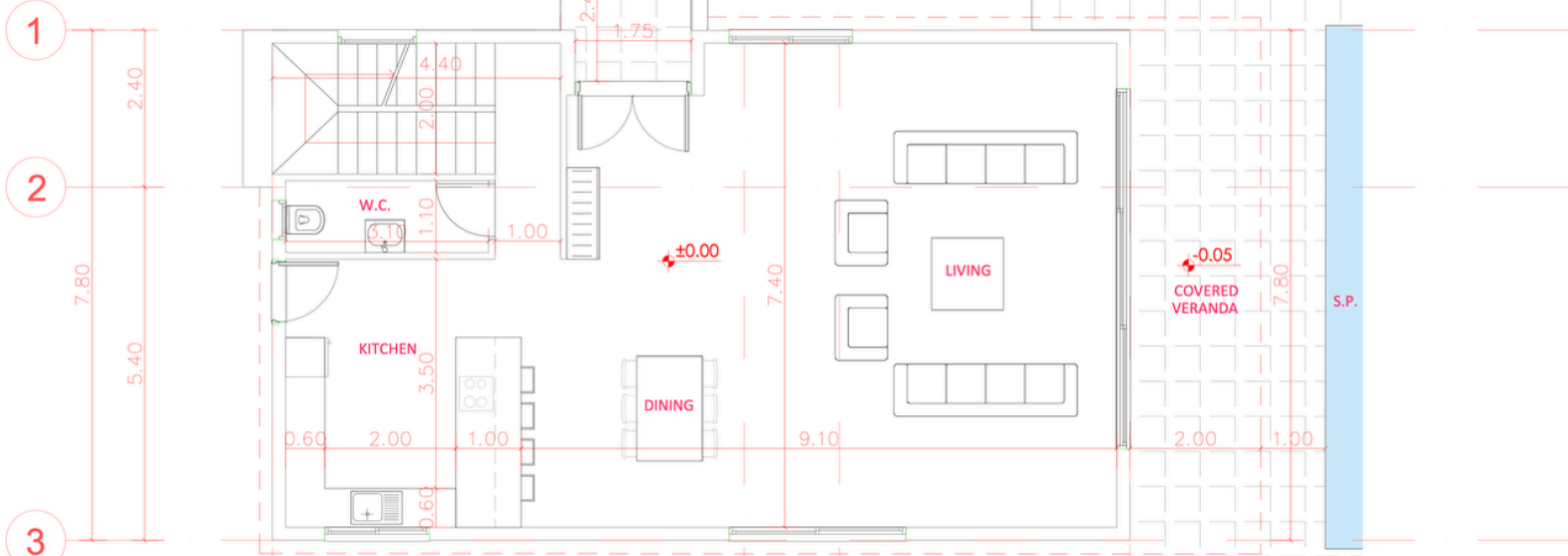


SITE PLAN

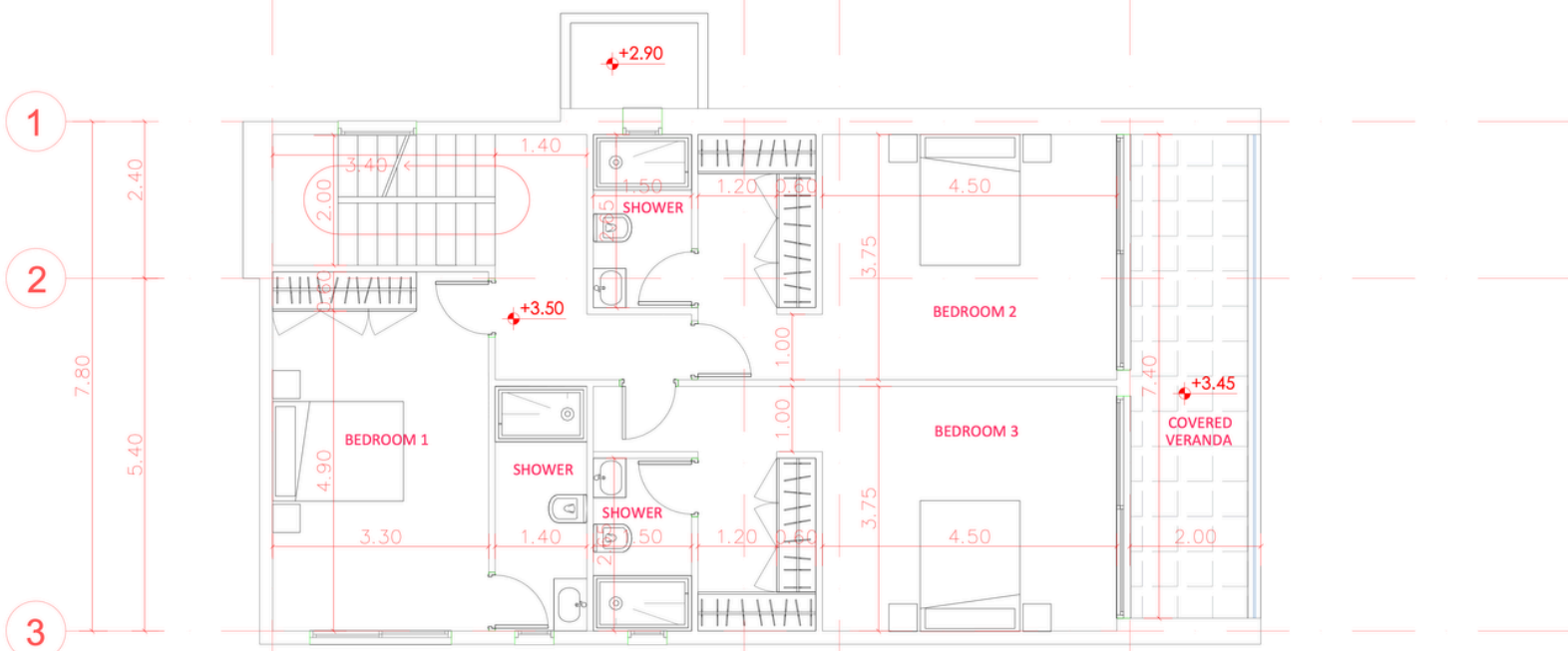


FLOOR PLAN

House 1



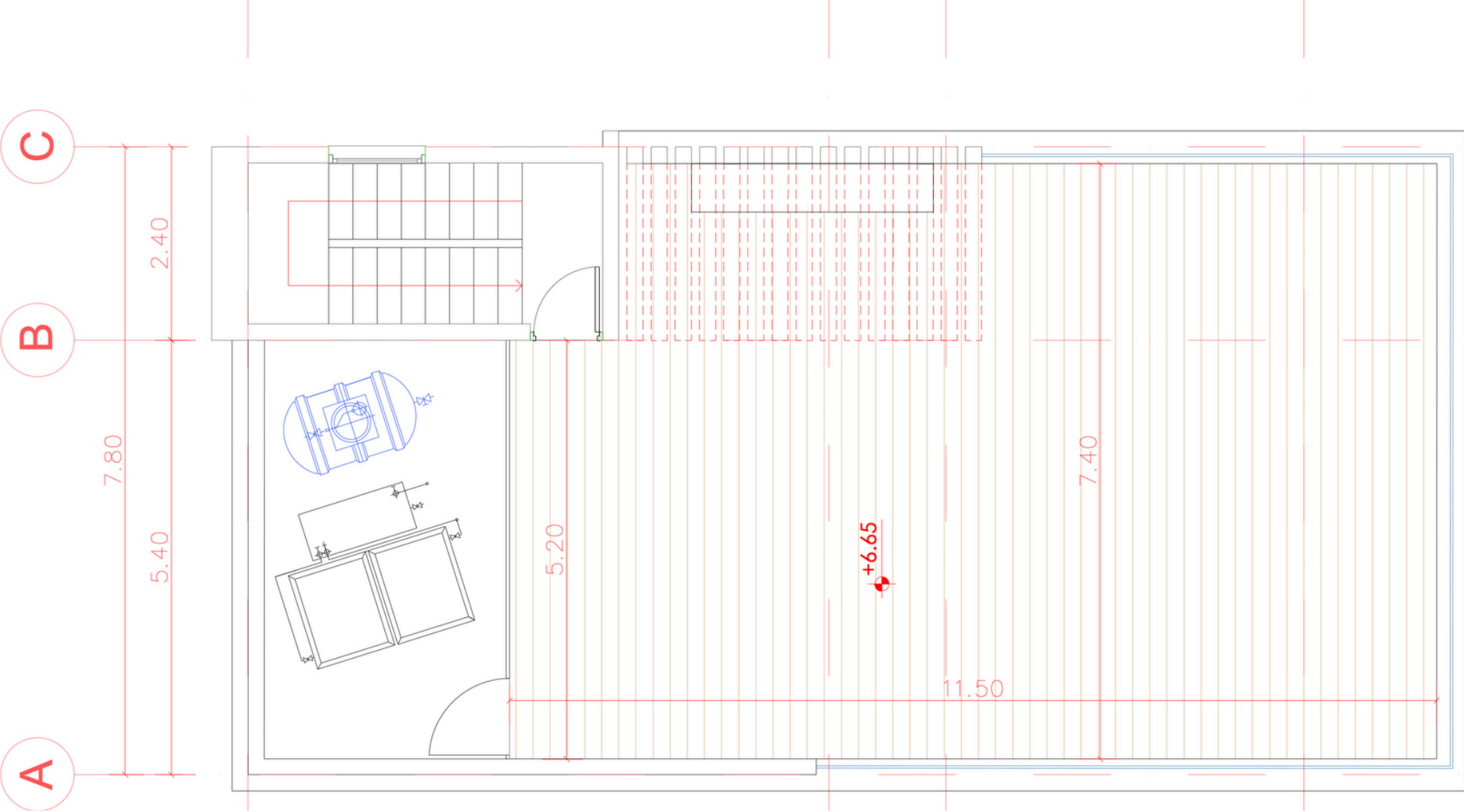
GROUND FLOOR - SCALE:1:100
HOUSE 1



FIRST FLOOR - SCALE:1:100
HOUSE 1

FLOOR PLAN

House 1 - Roof Garden

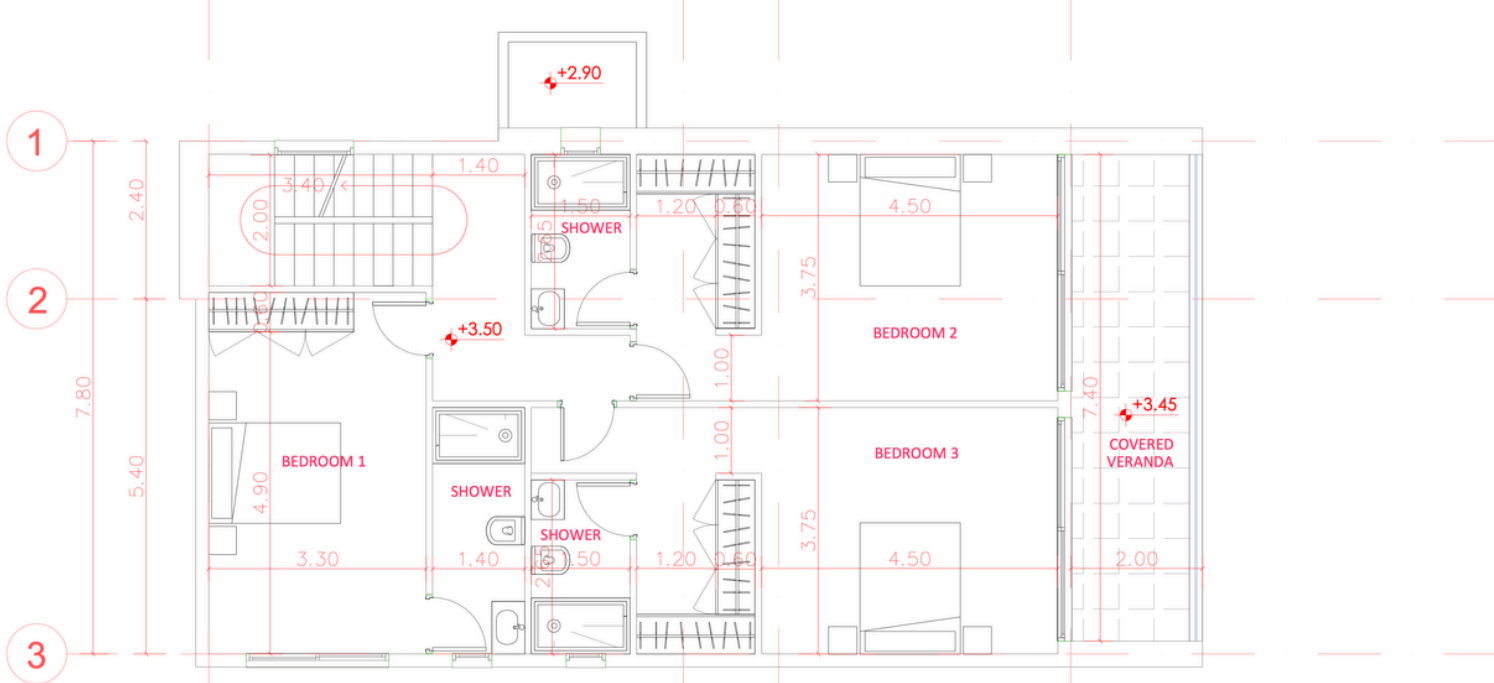


FLOOR PLAN

House 3



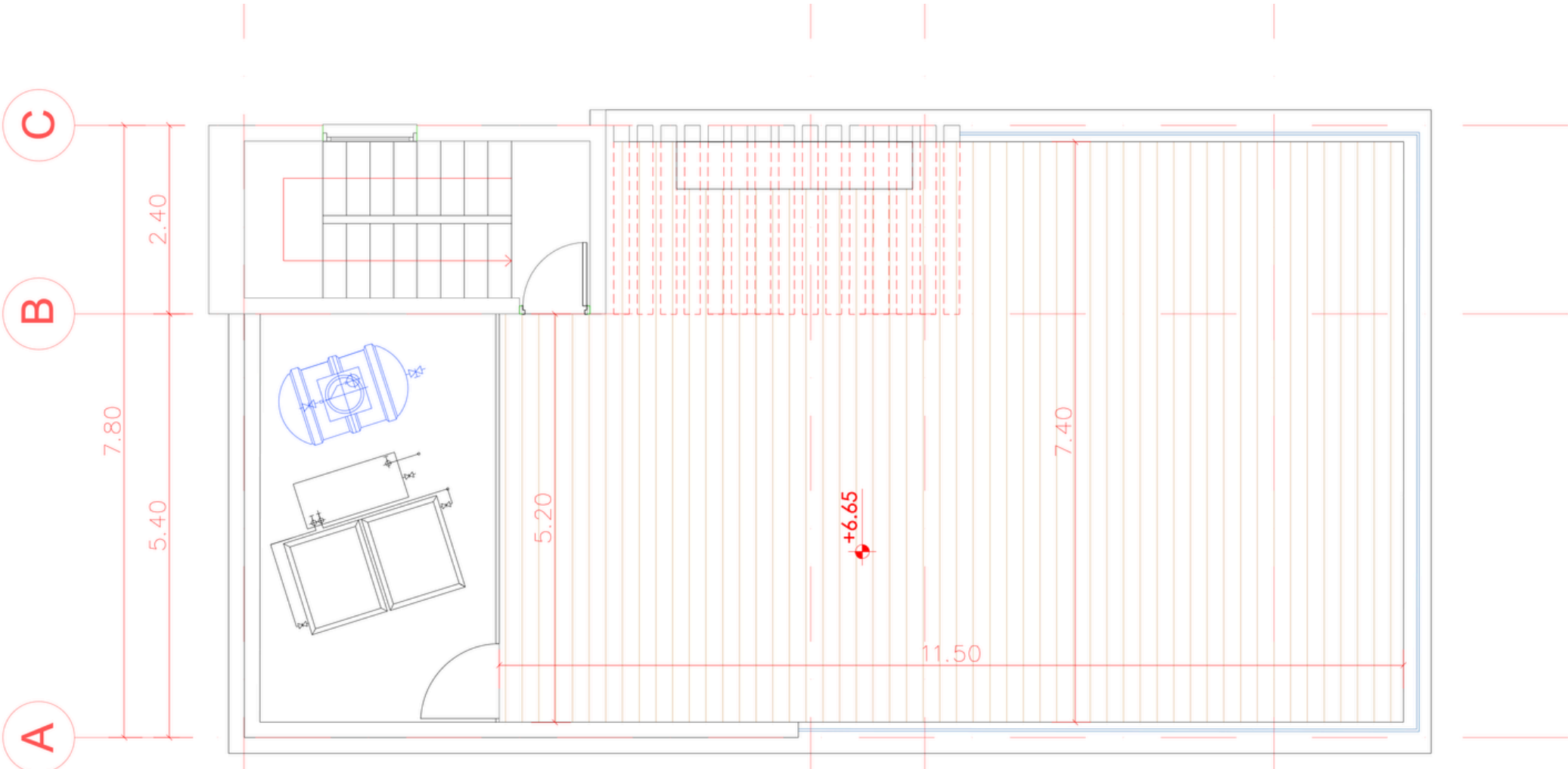
GROUND FLOOR - SCALE:1:100
HOUSE 3



FIRST FLOOR - SCALE:1:100
HOUSE 3

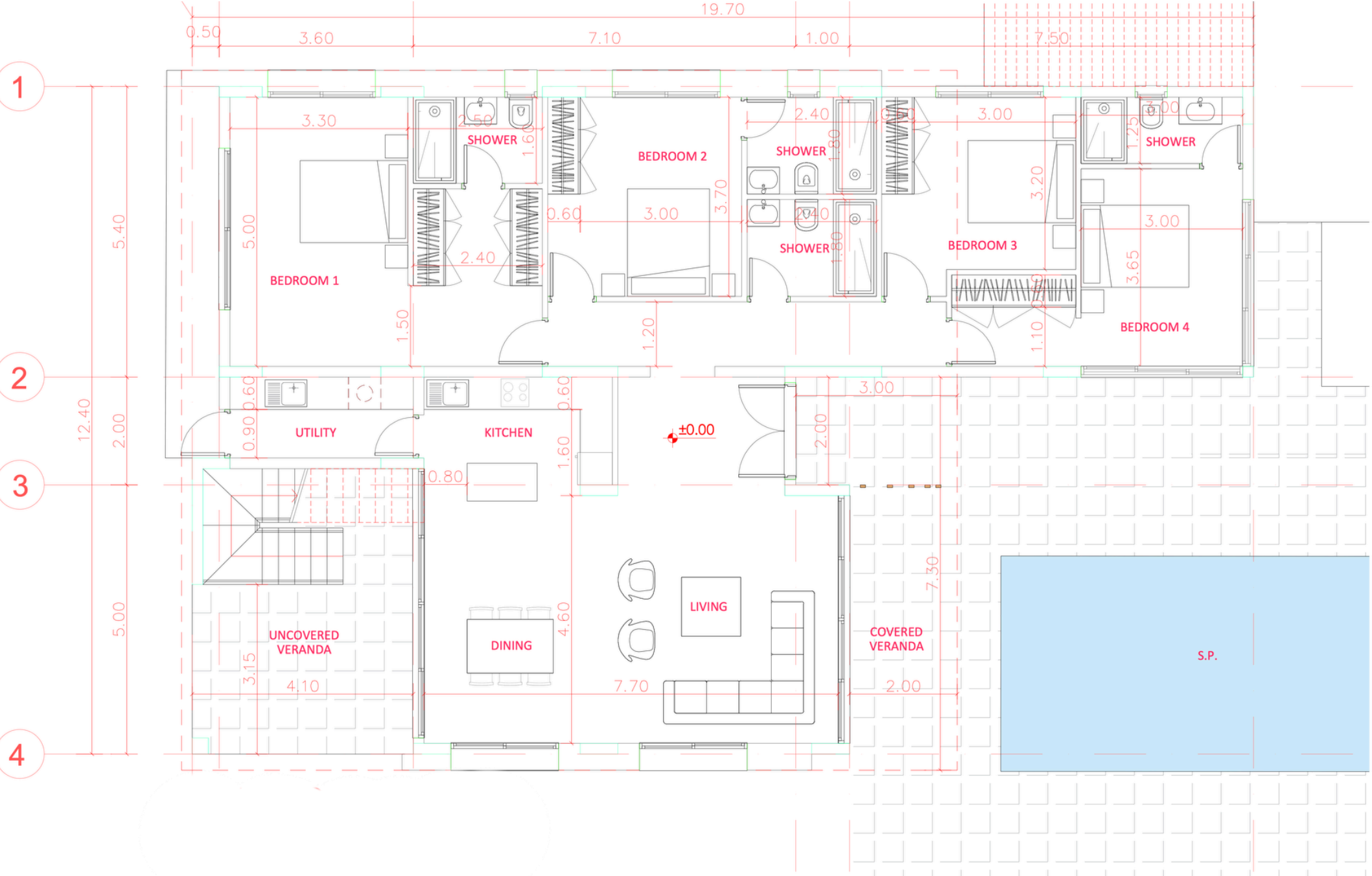
FLOOR PLAN

House 3 - Roof Garden



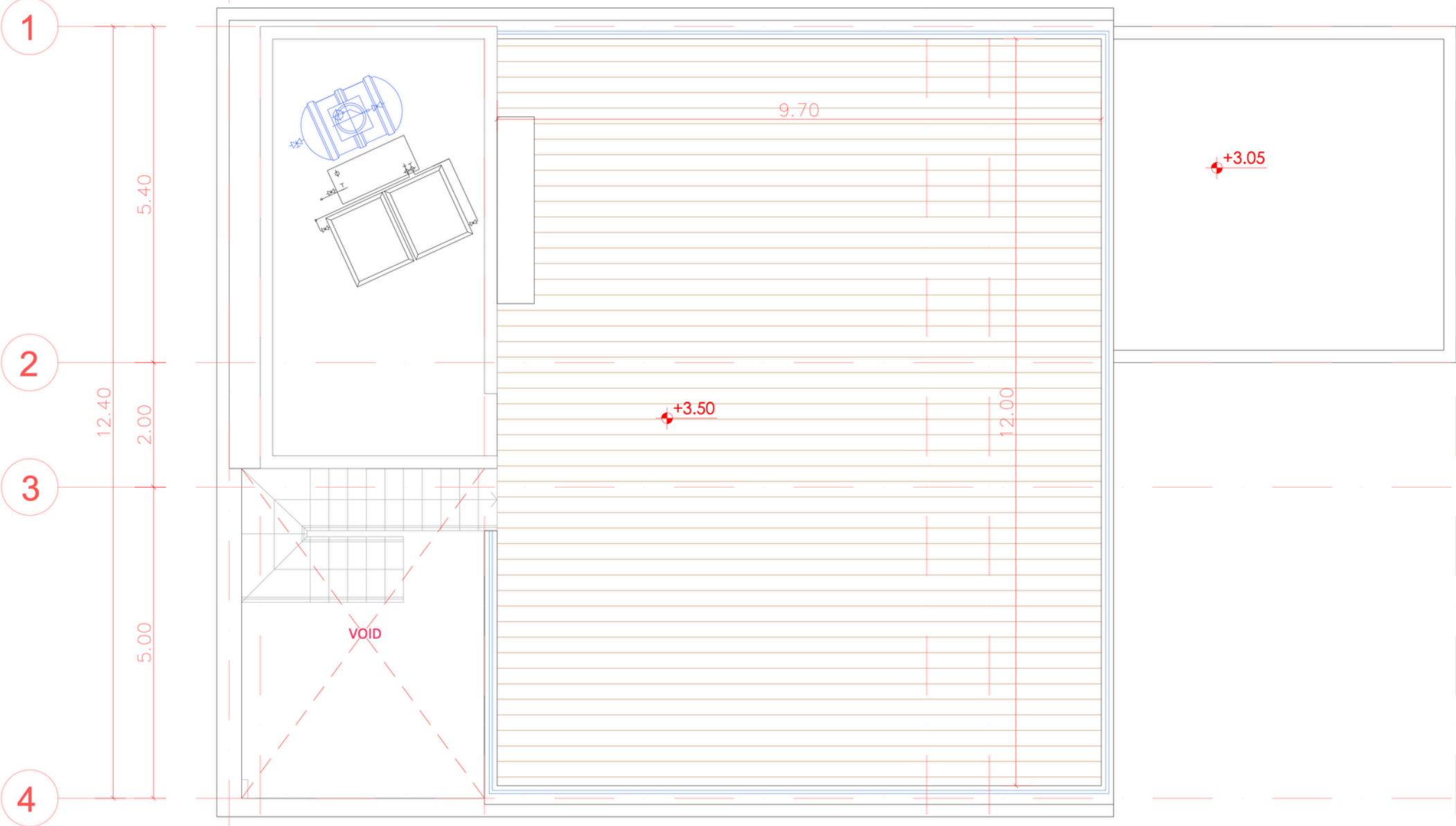
FLOOR PLAN

House 4



FLOOR PLAN

House 4 - Roof Garden



FLOOR PLAN

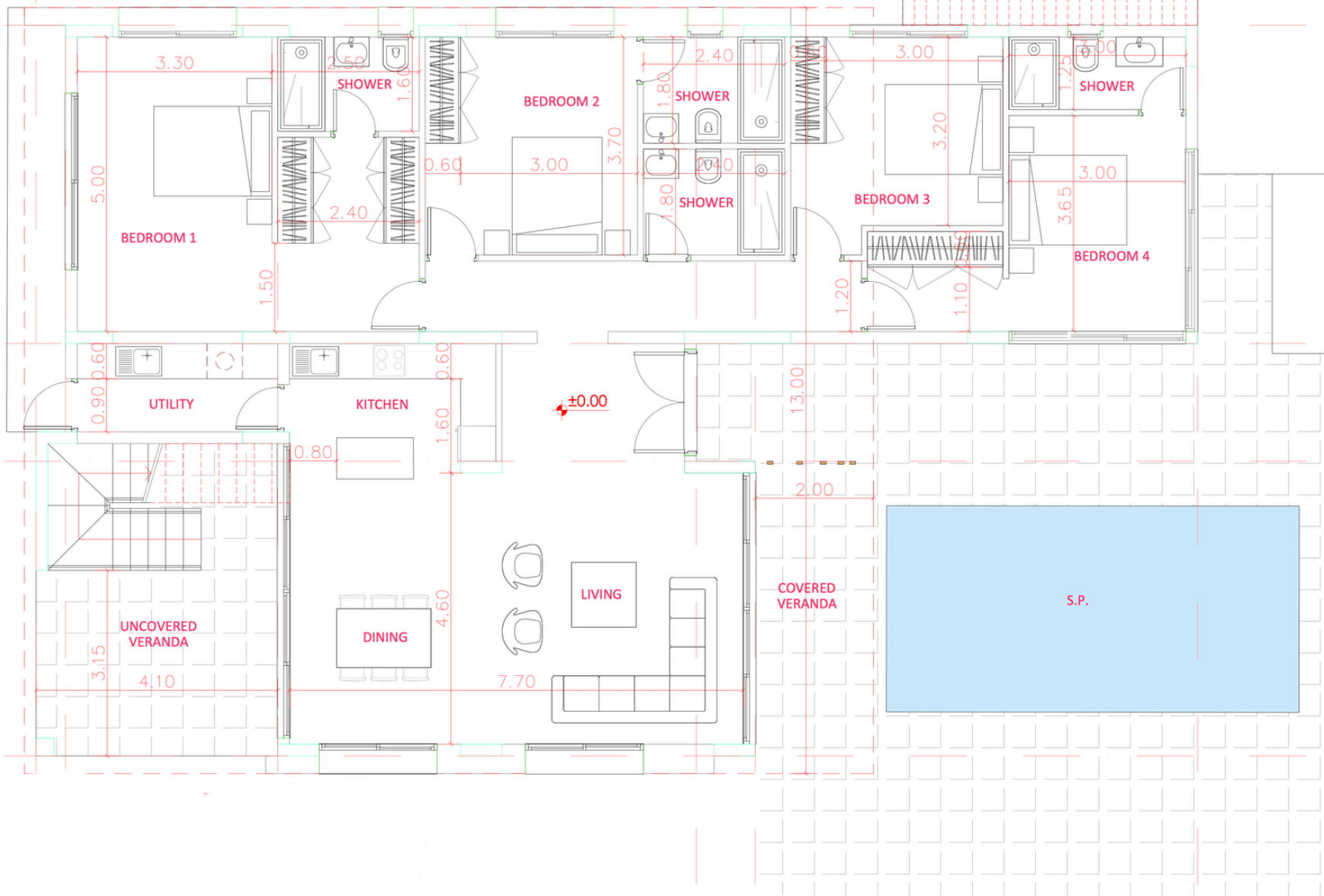
House 5

1

2

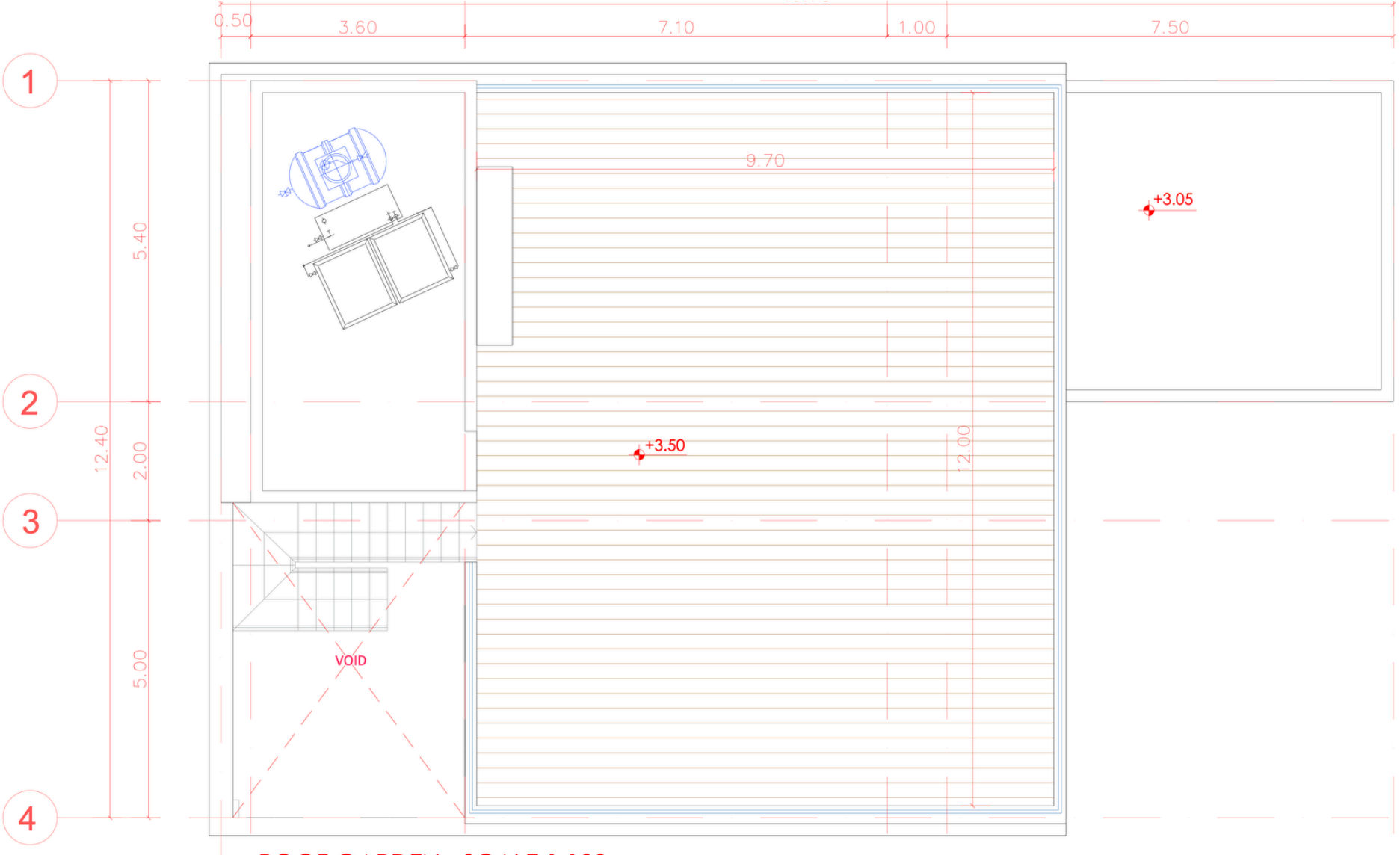
3

4



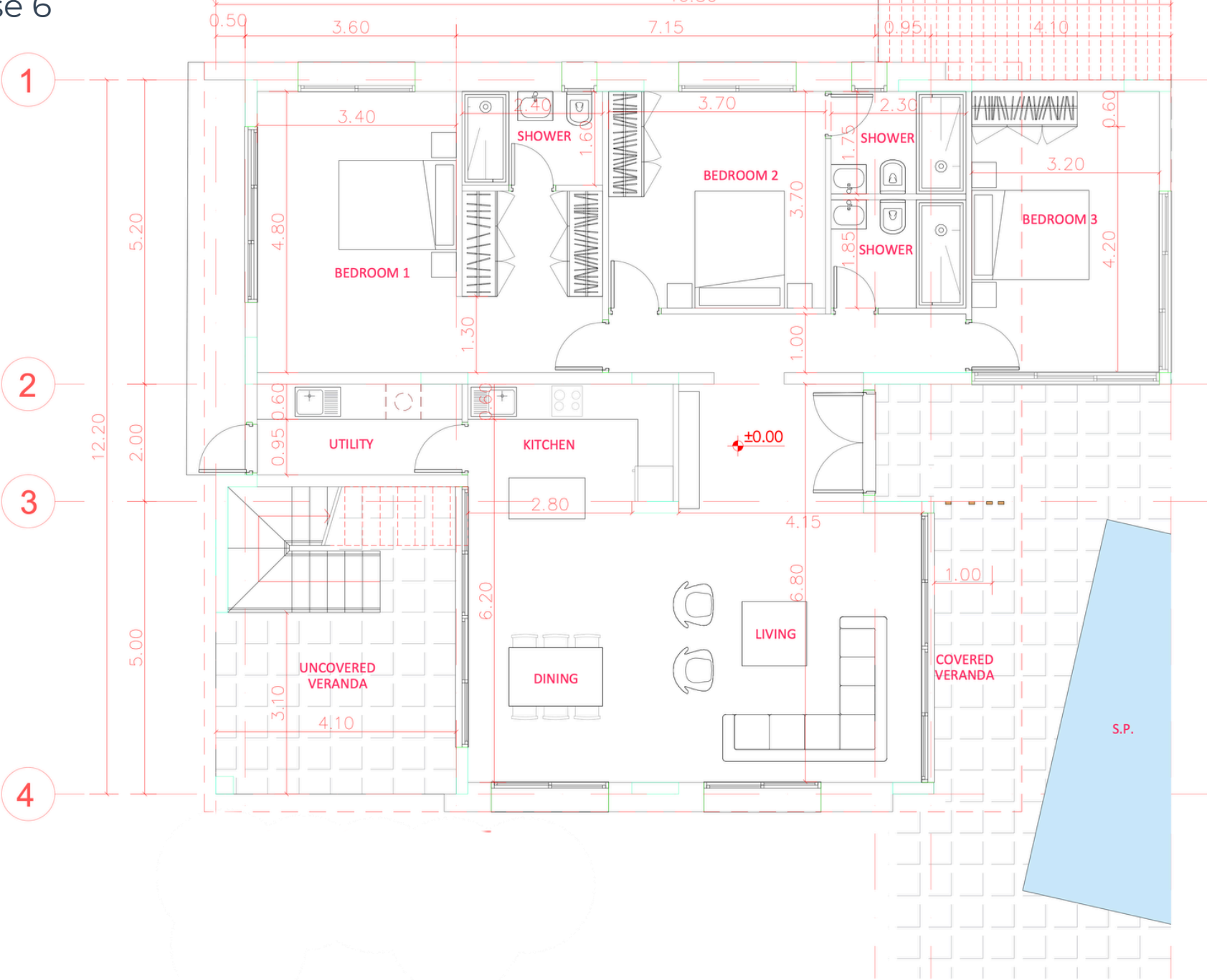
FLOOR PLAN

House 5 - Roof Garden



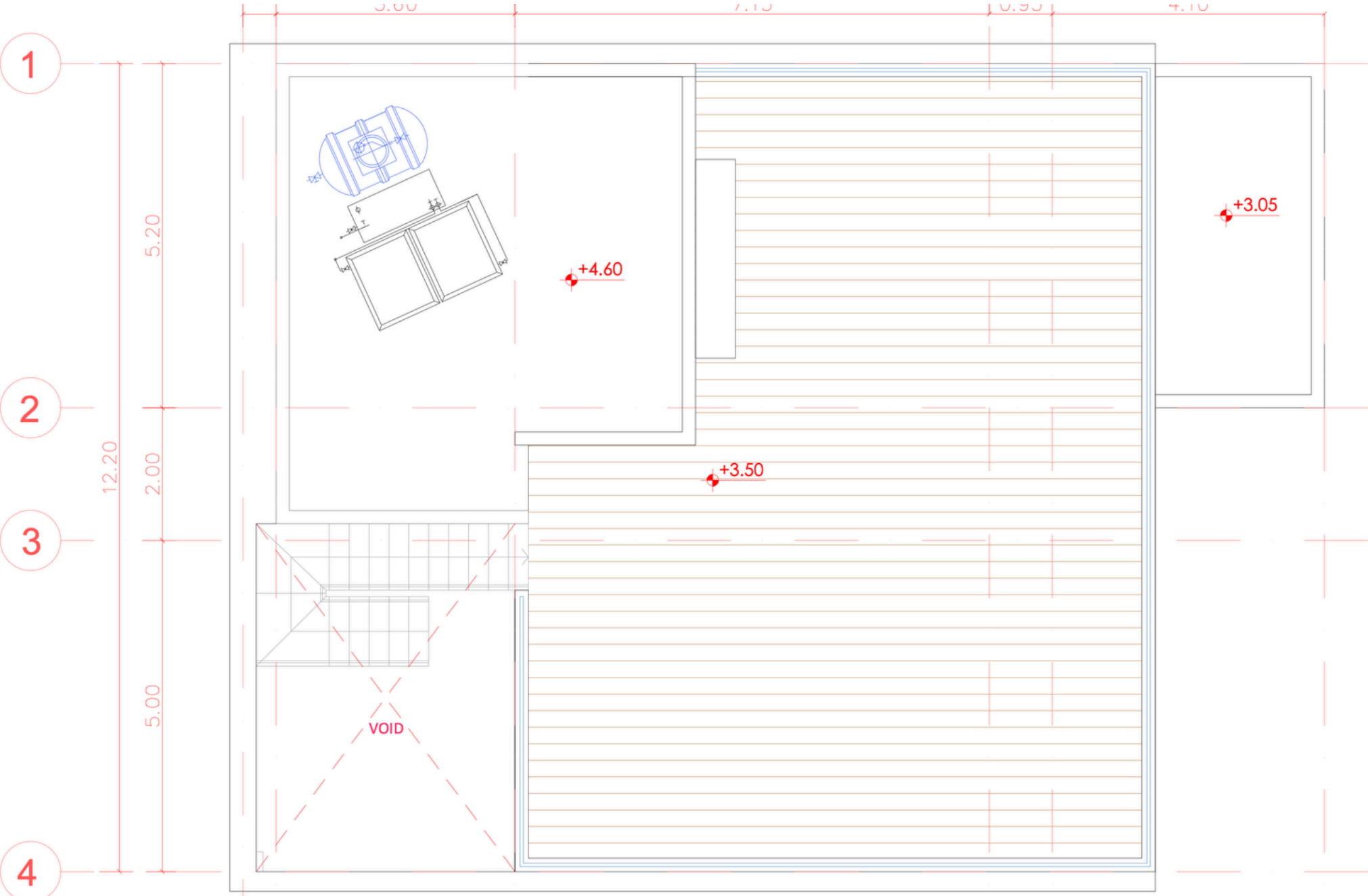
FLOOR PLAN

House 6



FLOOR PLAN

House 6 - Roof Garden





LOCATION



CITY CENTER 8KM



BEACH 5KM



AIRPORT 20KM



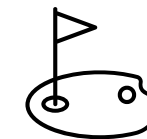
RESTAURANT 2KM



SUPERMARKET 2KM



SCHOOL 2KM



GOLF COURSE 10KM

MONTES

SPECIFICATIONS

- *Private Swimming pool*
- *Roof Garden*
- *Concealed Ac Units in living room and split units in bedrooms*
- *Entrance gate*
- *Covered parking*
- *Electric car charger Provision*
- *5 KW solar system*
- *BBQ Bench*
- *Alarm system*
- *Underfloor Heating*
- *Energy Efficiency class "A"*
- *Upgraded thermal aluminium series*
- *Tailor made kitchen design*
- *Wide range of imported ceramic tiles and marbles*
- *Branded sanitary ware*

