

# KONIA AURA

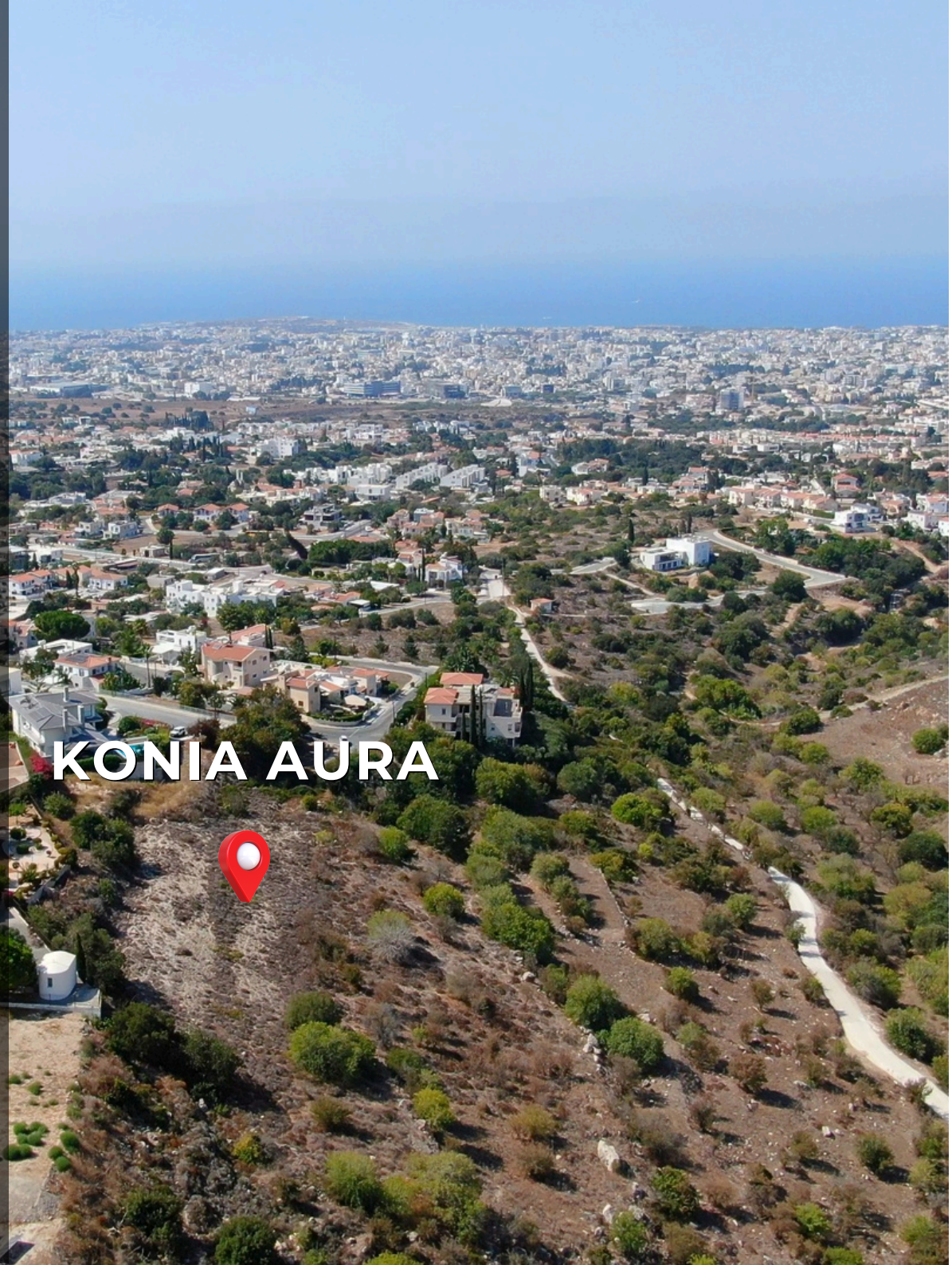


# KONIA

Konia Village is located just three kilometres east of Paphos town, nestled on a gentle hillside that offers sweeping views of the city and the Mediterranean Sea. With its elevated position and mild climate, Konia has become one of the most desirable residential areas in the region.

The village blends traditional Cypriot character with modern architectural elegance, where stone-built homes and stylish villas create a charming and timeless atmosphere.

Known for its peaceful surroundings and strong community spirit, Konia provides a comfortable and family-friendly environment while remaining close to everything, Paphos city centre, international schools, the highway, and the coastline. It's a place where the tranquility of village life meets the convenience of modern living, embodying the true essence of authentic Mediterranean lifestyle.



## KONIA AURA



# KONIA AURA

From the Greek “Αὔρα” (Aura), meaning “breeze” or “gentle air,” and inspired by the serene hillsides of Konia, Konia Aura perfectly captures the essence of refined hillside living, where elegance, tranquility, and Mediterranean charm meet in harmony.

Welcome to Konia Aura, an exclusive residential development set in the peaceful hills of Konia Village, just minutes from Pafos town and the coastline.

Designed with contemporary architecture and refined aesthetics, Konia Aura offers spacious one, two, and three-bedroom apartments that welcome natural light and open to magnificent sea views.

Residents can enjoy premium facilities, including an overflow swimming pool with unobstructed sea view, BBQ and recreational area, private storage room for each apartment, and energy efficiency class A standards — all thoughtfully crafted to elevate the everyday experience.

With its balance of modern sophistication, peaceful surroundings, and inspiring vistas, Konia Aura is more than a home. It is a serene retreat, embodying the true spirit of modern Mediterranean living at its finest.



















**KONIA AURA**





**KONIA AURA**





**KONIA AURA**

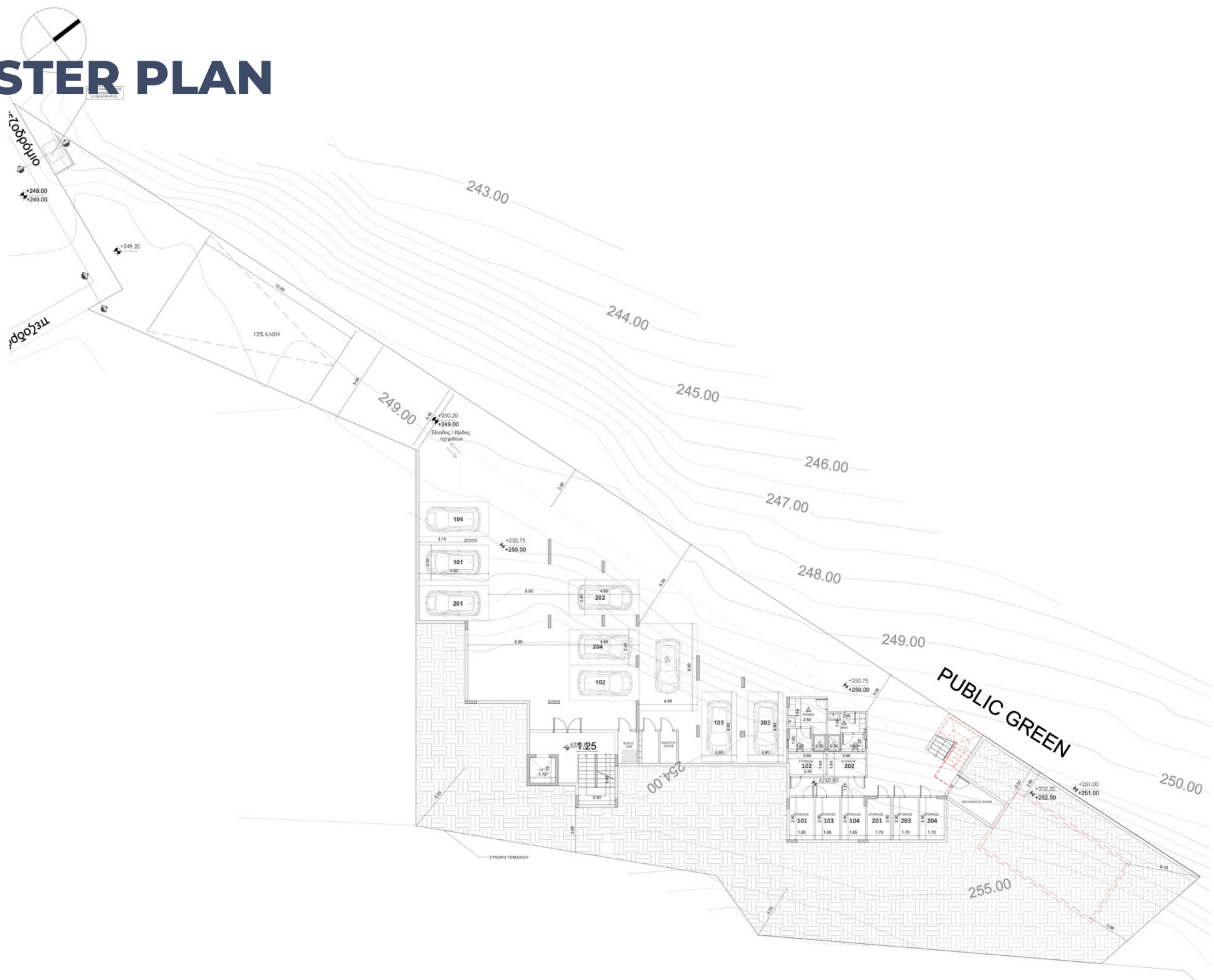




**KONIA AURA**



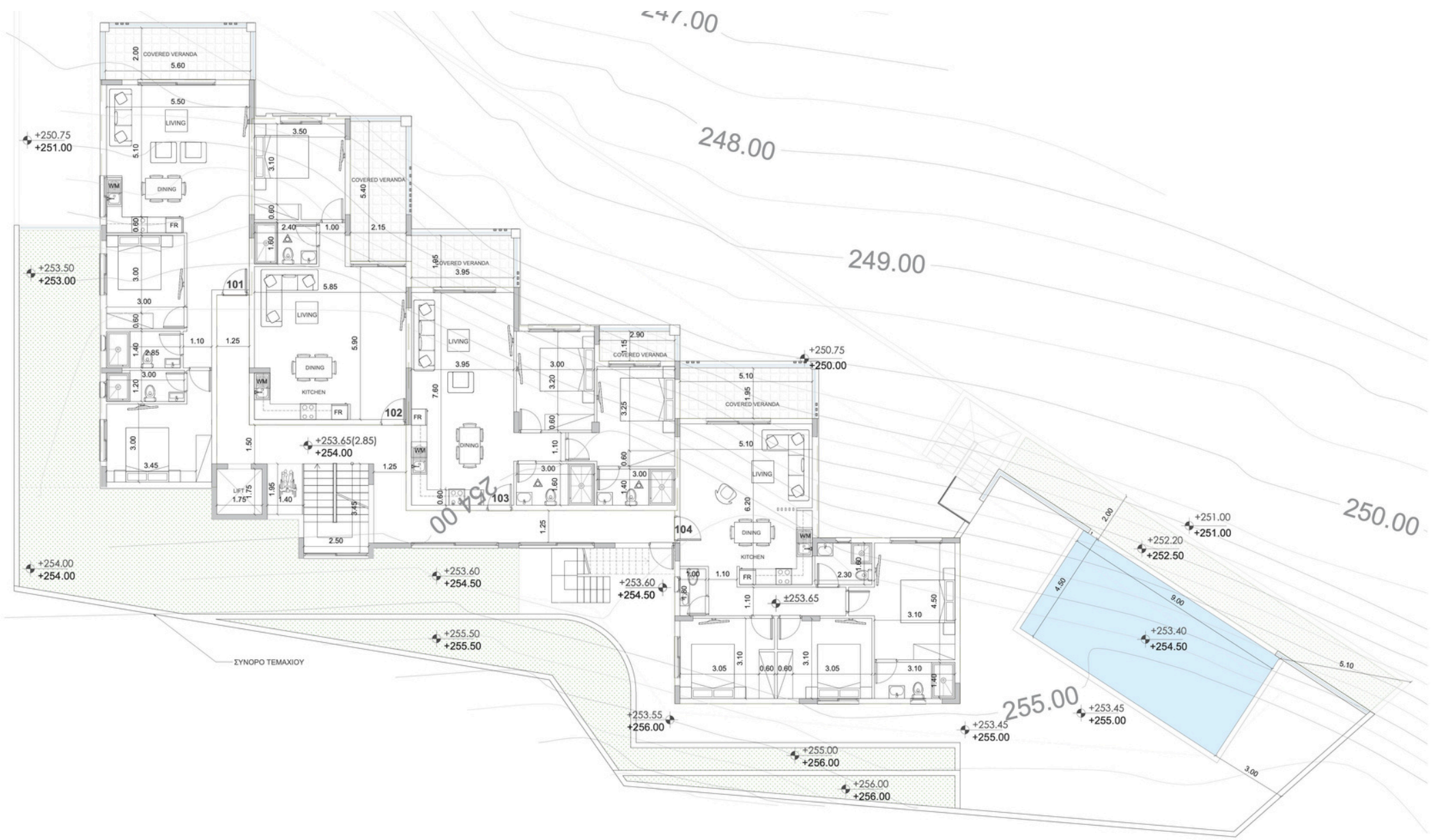
# MASTER PLAN



SITEPLAN

# FLOOR PLAN

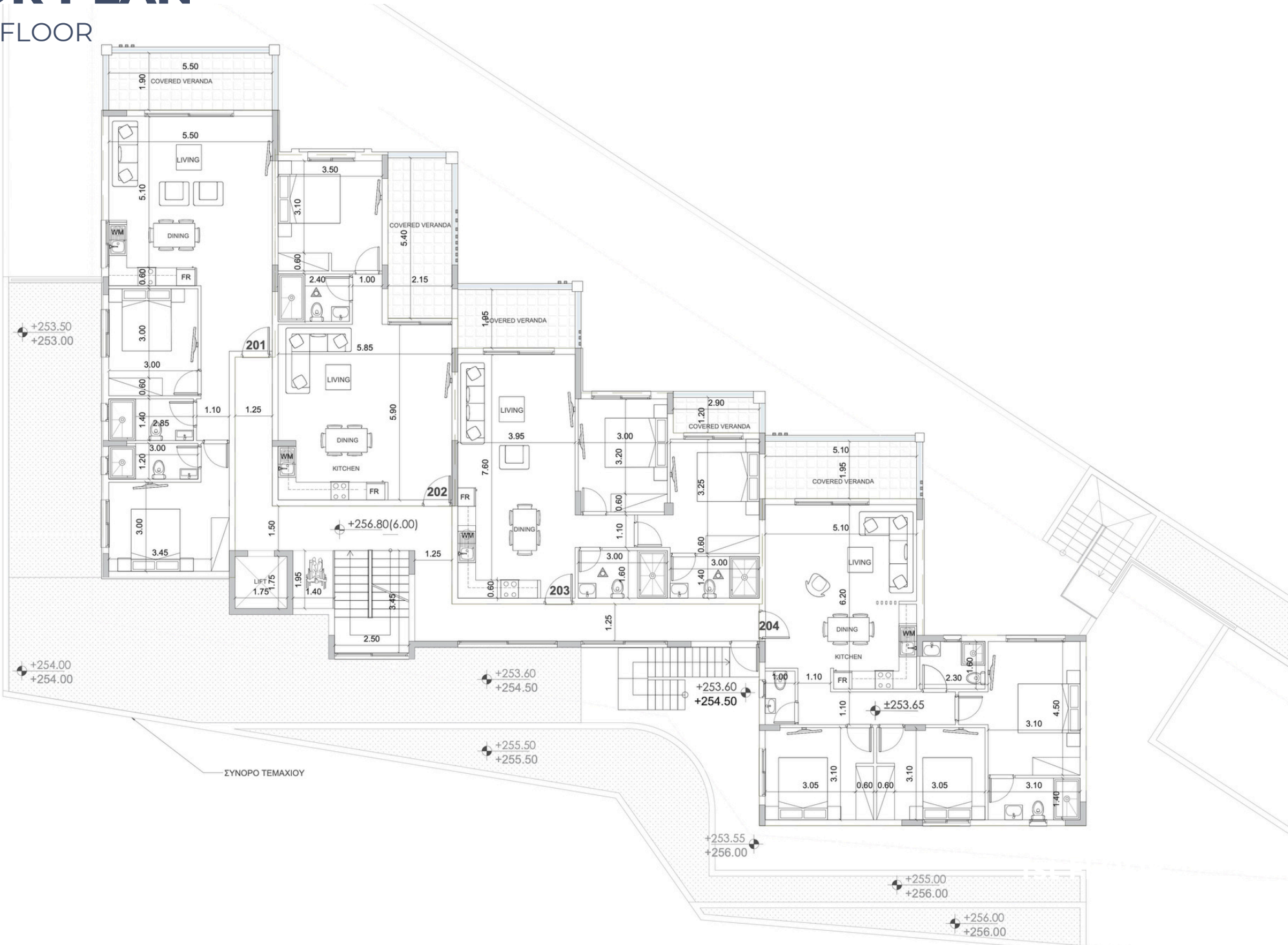
## FIRST FLOOR

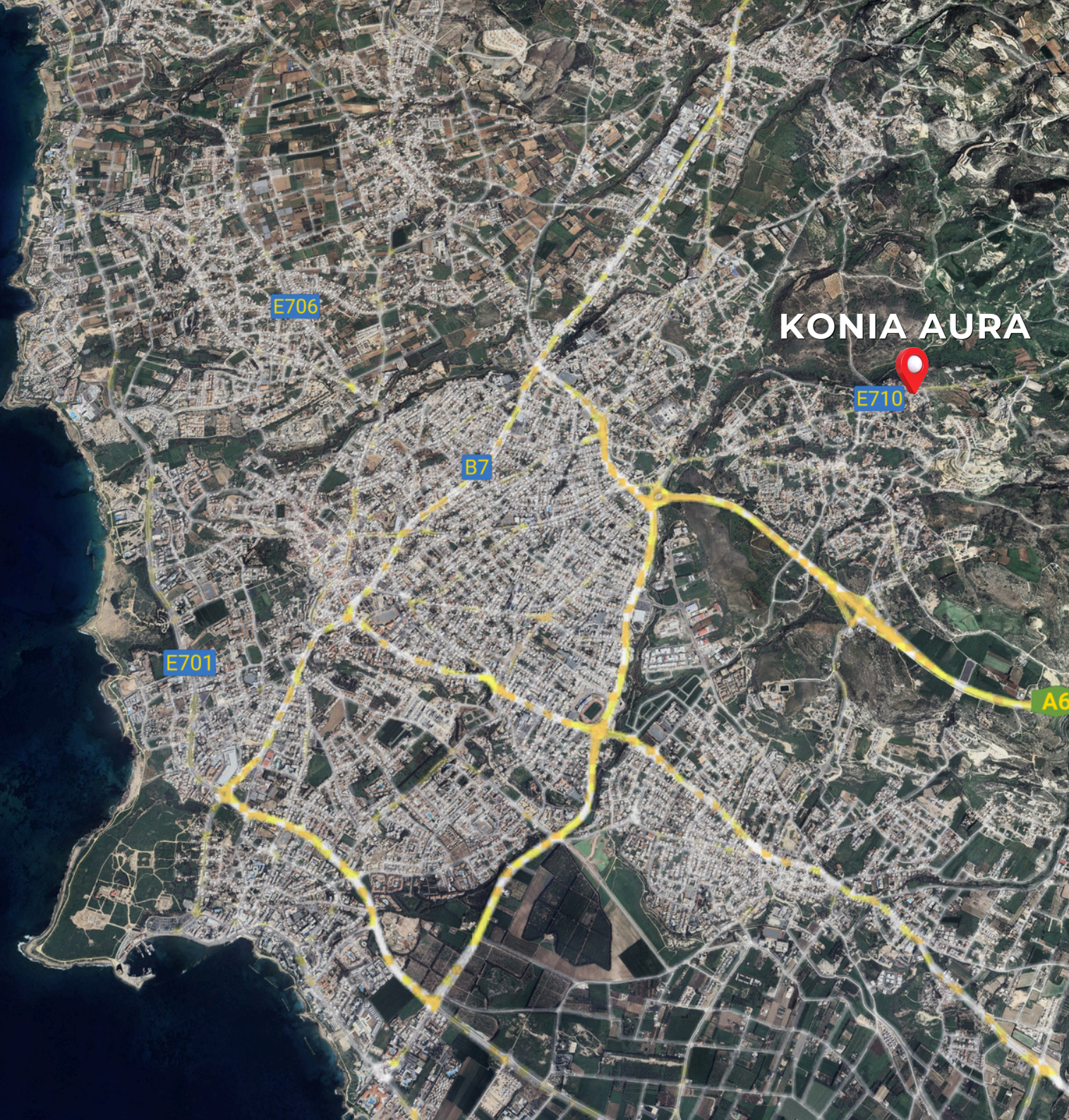


## FIRST FLOOR

# FLOOR PLAN

## SECOND FLOOR





# LOCATION



CITY CENTER 1KM



BEACH 5KM



AIRPORT 15KM



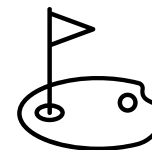
RESTAURANT 2KM



SUPERMARKET 5KM



SCHOOL 7KM



GOLF COURSE 10KM



# KONIA AURA

## SPECIFICATIONS

- ***Overflow swimming pool with unobstructed sea view***
- ***BBQ and recreational area***
- ***Private storage room for each apartment***
- ***Unobstructed sea view from all apartments***
- ***Energy efficiency class A***
- ***Contemporary architectural design***
- ***Upgraded thermal aluminium series***
- ***Tailor-made kitchen design***
- ***Wide range of imported ceramic tiles***
- ***Branded sanitary ware***