

cirvis



TOMBS OF THE KINGS AREA

The Tombs of the Kings area is one of Paphos' most desirable locations, offering a unique blend of history, coastal beauty, and modern conveniences. Just minutes from the town center, it is ideal for both permanent living and investment.

Home to the UNESCO-listed Tombs of the Kings, the area combines rich heritage with a vibrant lifestyle, featuring seafront hotels, restaurants, bars, and leisure activities.

Its elevated position provides stunning Mediterranean views, while excellent connectivity to Chloraka, Kato Paphos, and Kissonerga ensures easy access to beautiful beaches and essential amenities



CIRVIS

Contemporary Coastal Living in Chloraka

CIRVIS is an exclusive gated residential complex in the picturesque area of lower Chloraka, offering 10 one-bedroom and 8 two-bedroom apartments designed for modern comfort and effortless Mediterranean living. Ideally positioned close to the sea, the town center, and Aspire Private School, CIRVIS provides both convenience and tranquility in one of Paphos' most sought-after locations.

Surrounded by beautifully landscaped gardens, the development features two communal swimming pools (14m x 6m at Block B and 9m x 4.5m at Block A), changing rooms, and outdoor showers, ensuring a resort-like experience.

Thoughtfully designed BBQ and recreational areas create the perfect setting for relaxation and social gatherings, while the secure, gated environment offers peace of mind and privacy.





















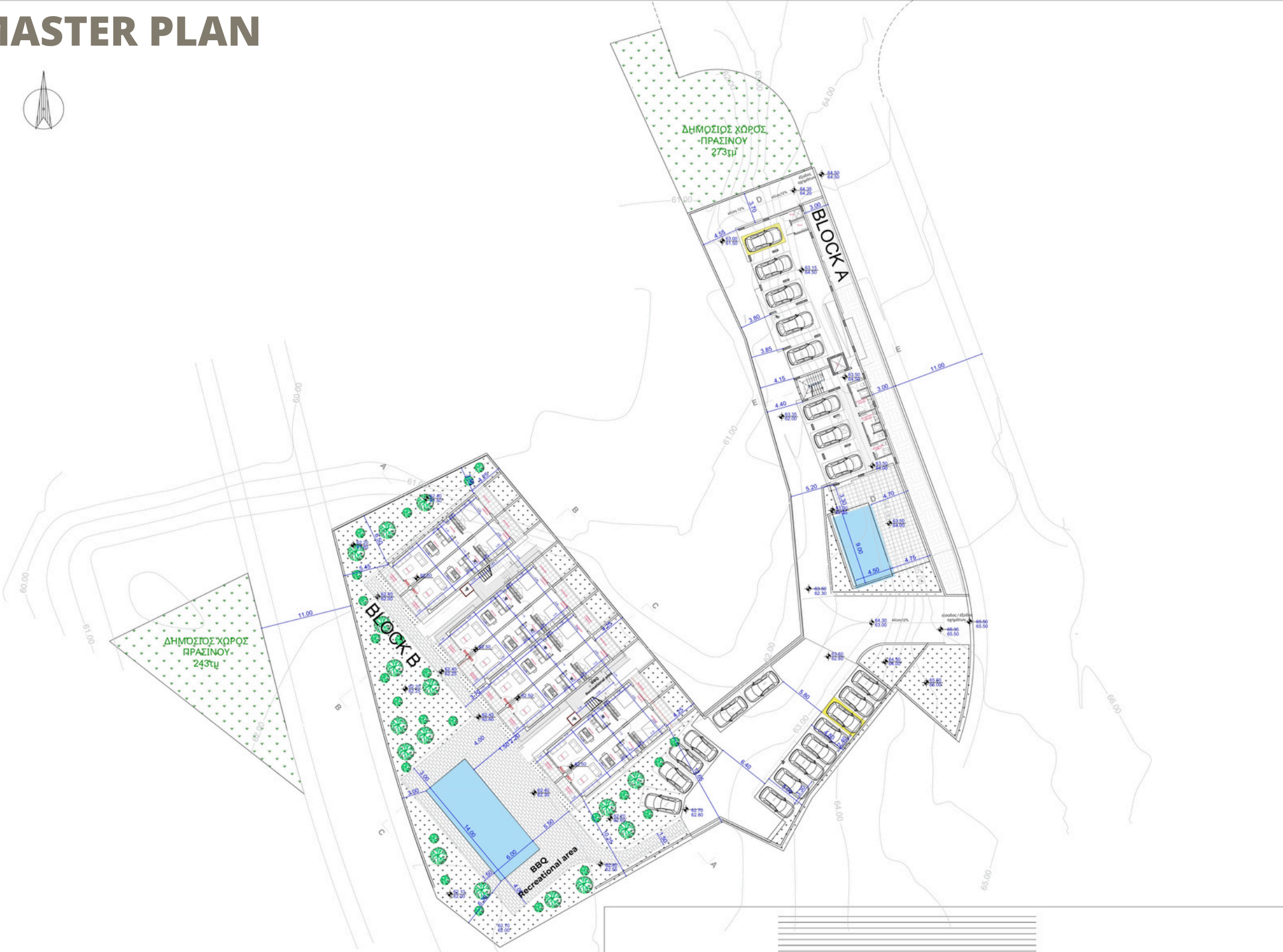






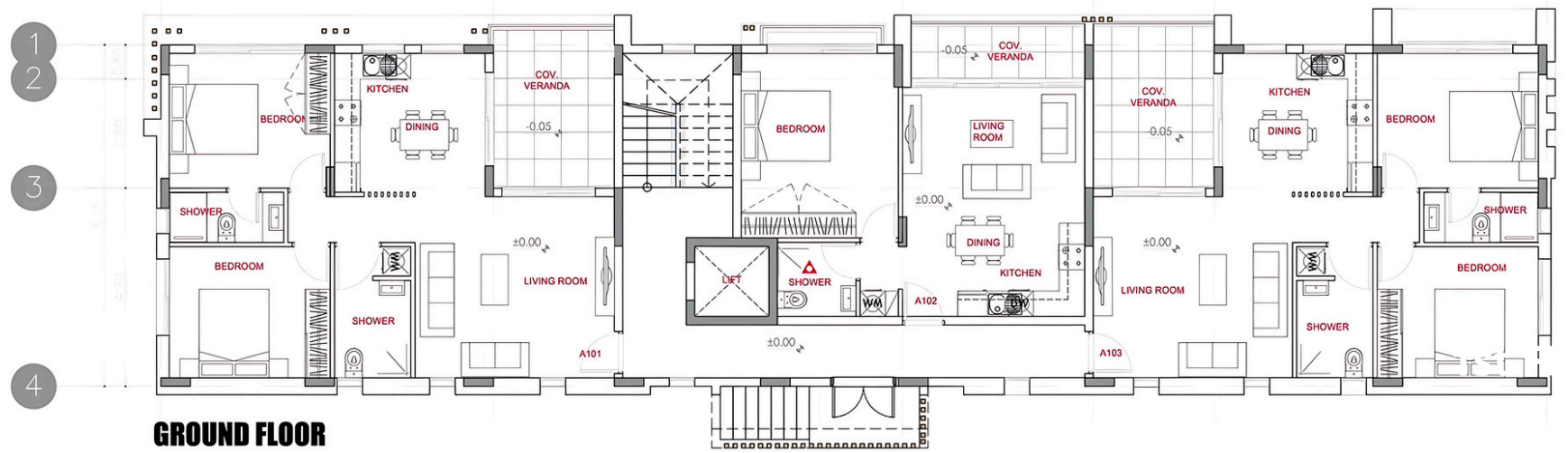
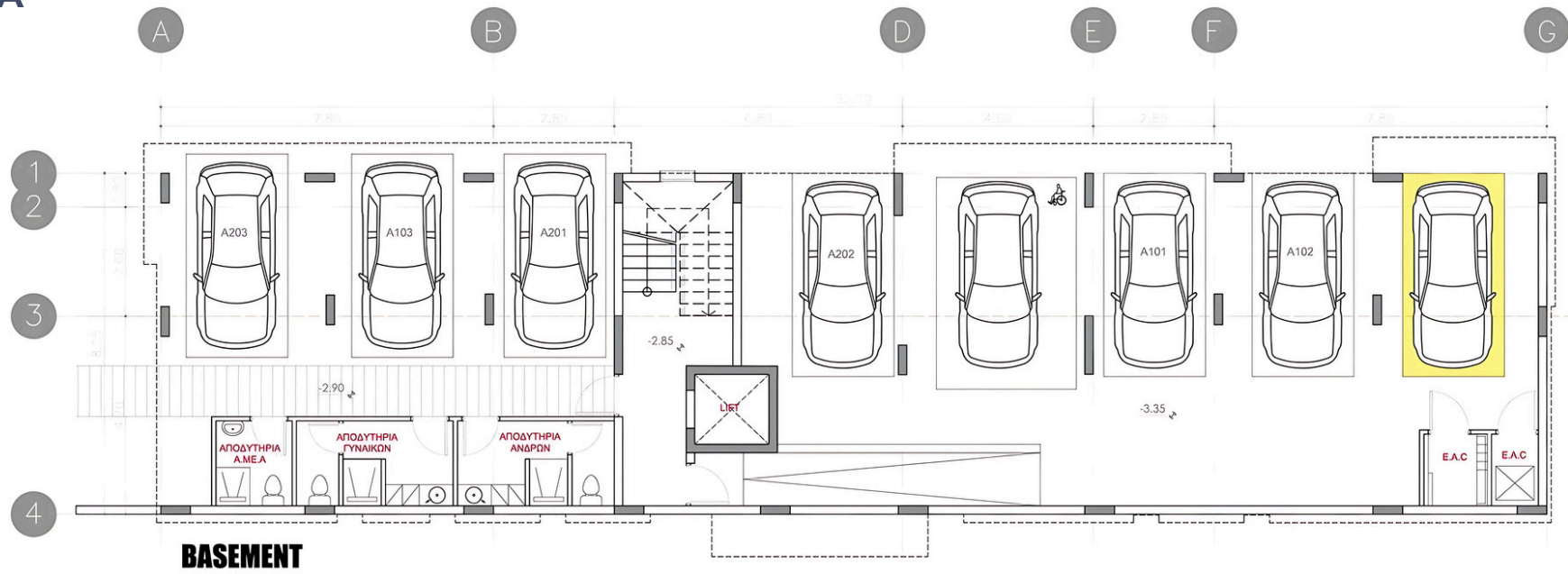


MASTER PLAN



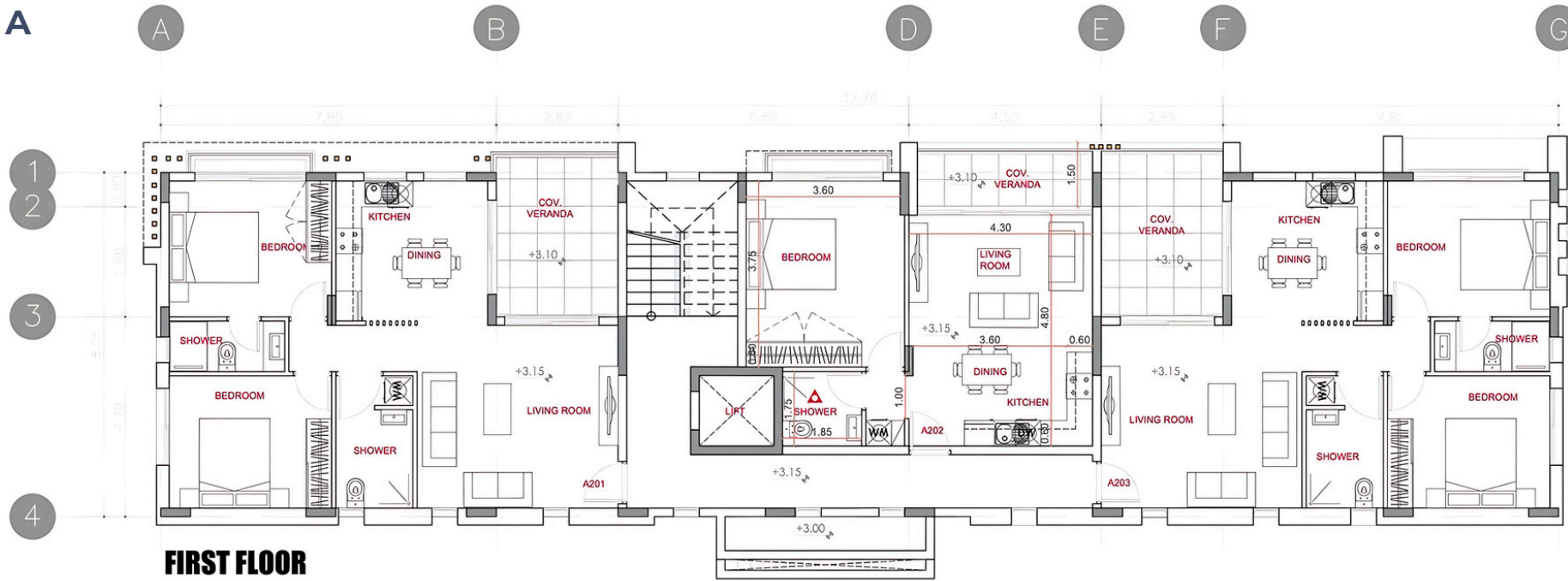
FLOOR PLAN

BLOCK A

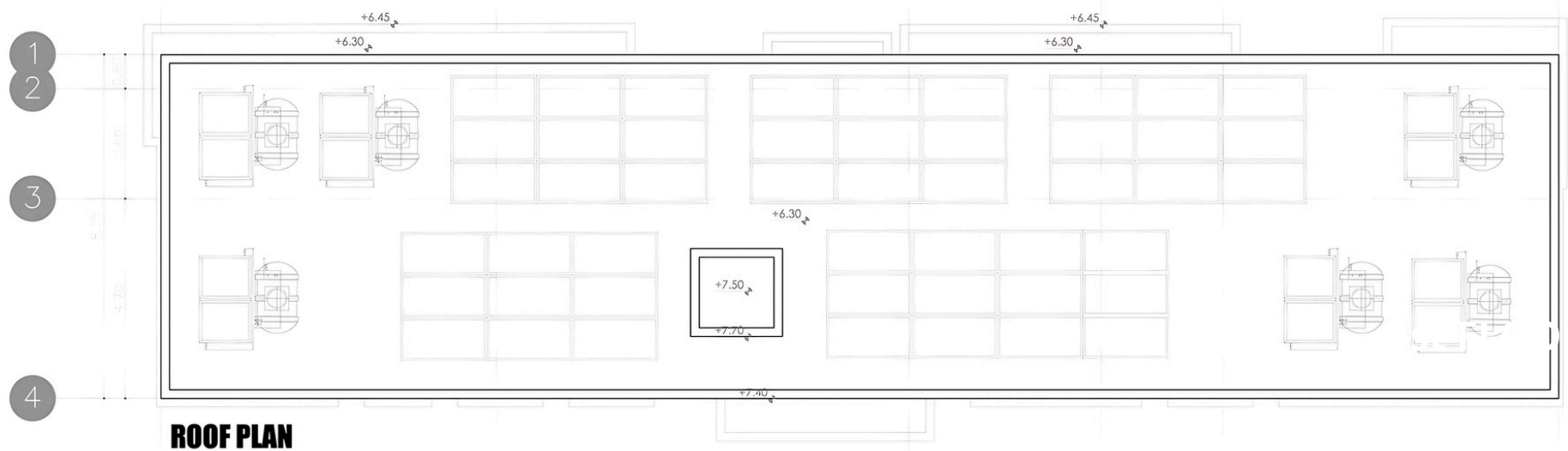


FLOOR PLAN

BLOCK A



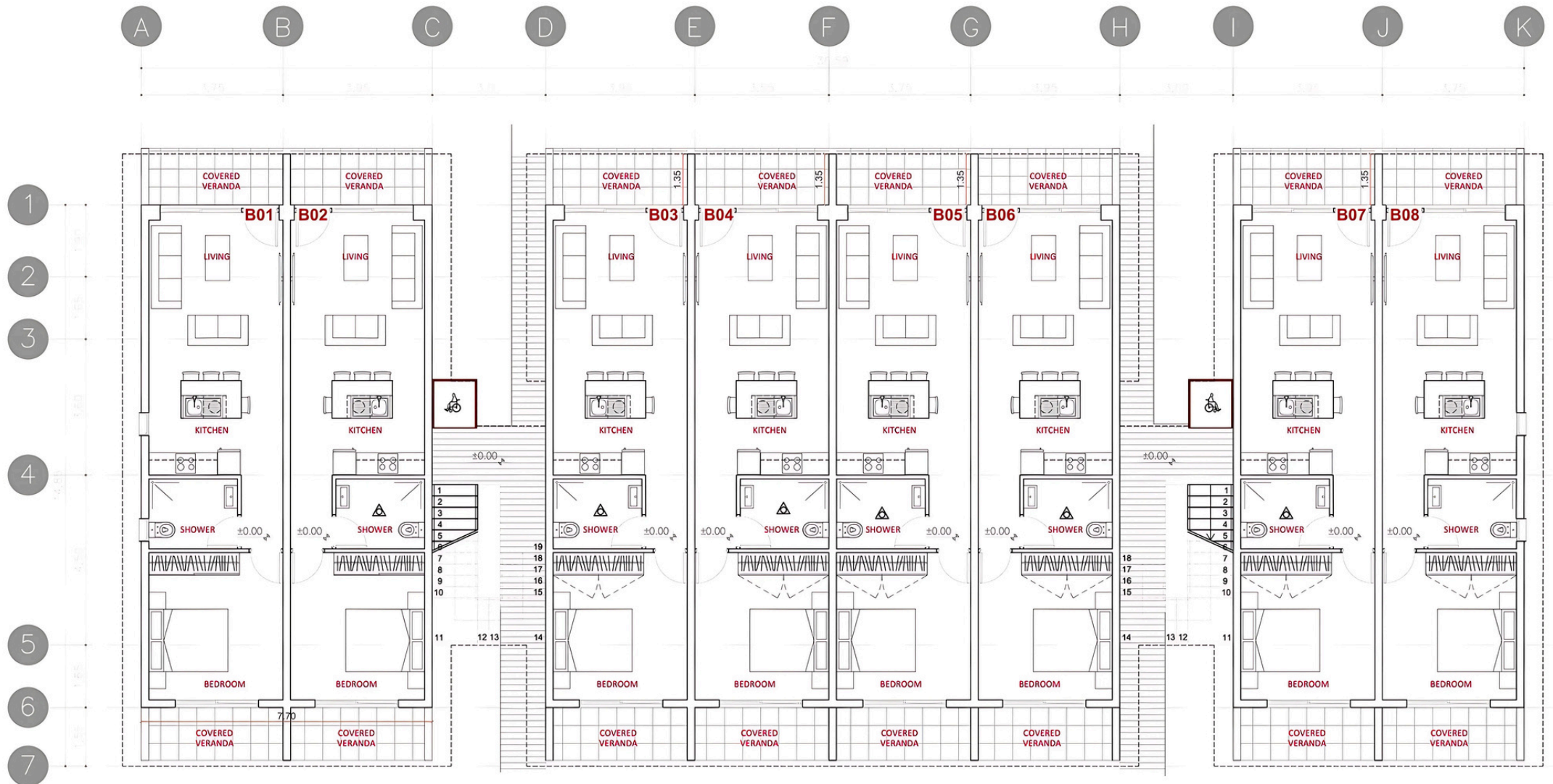
FIRST FLOOR



ROOF PLAN

FLOOR PLAN

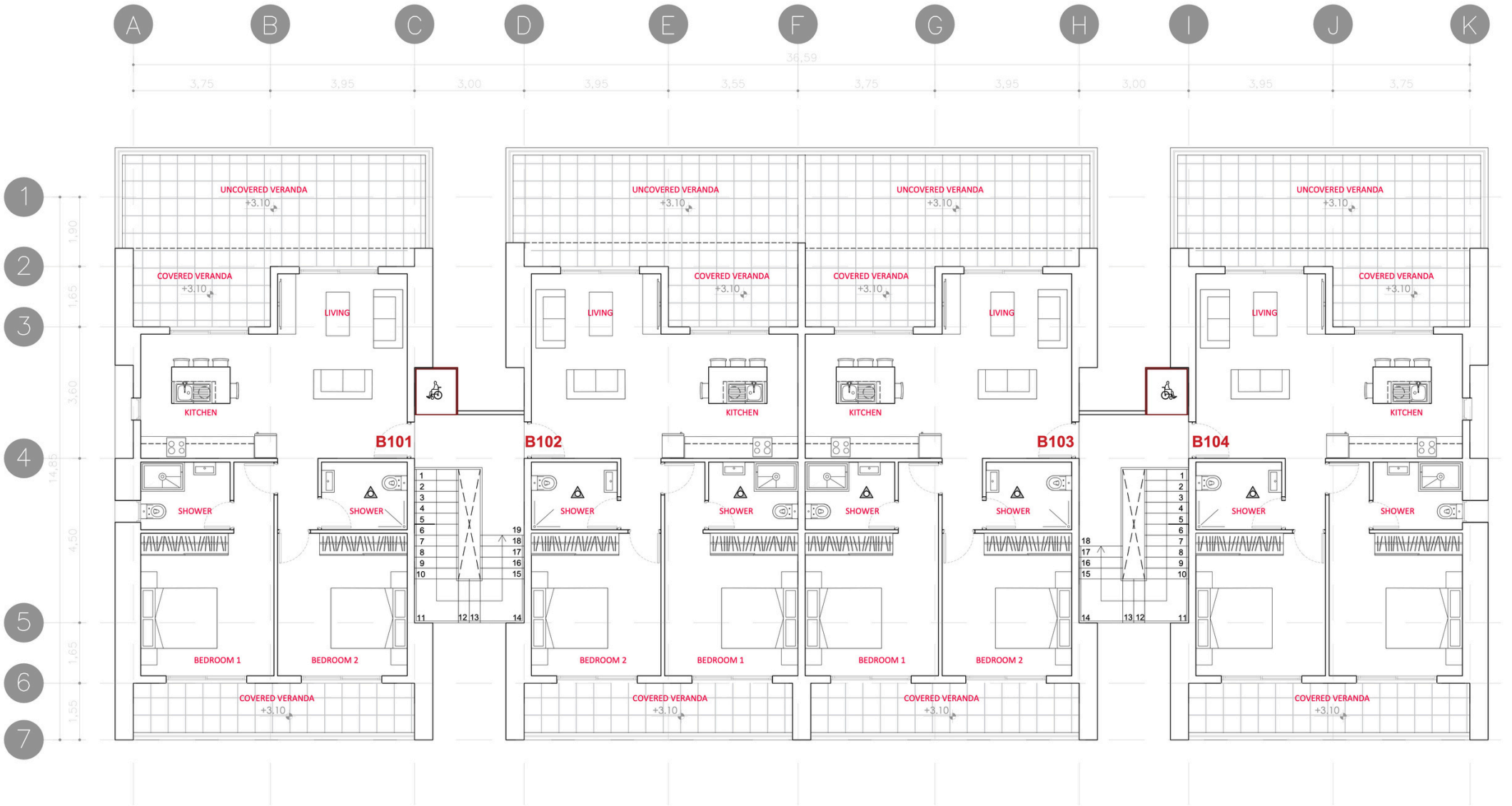
BLOCK B



GROUND FLOOR

FLOOR PLAN

BLOCK B



FIRST FLOOR

LOCATION



CITY CENTER
1.5KM



BEACH
500m



AIRPORT
10KM



RESTAURANT
400M



SUPERMARKET
500M



SCHOOL
500 M



GOLF COURSE
8KM

CIVIS

SPECIFICATIONS

- 1 and 2 bedroom apartments
- 18 apartments across 2 blocks
- Communal swimming pools (14m x 6m at Block B and 9m x 4.5m at Block A)
- BBQ and recreational areas
- Gated complex with landscaped gardens
- Changing rooms and outdoor showers
- Contemporary architectural design
- Upgraded thermal aluminium series
- Tailor-made kitchen design
- Wide range of imported ceramic tiles and marbles
- Branded sanitary ware
- Provisions for central heating and A/C
- Prime location near Tombs of the Kings
- Energy efficiency Class "A"

