

REDWOOD

R E S I D E N C E

www.dnagroup.com.cy

REDWOOD RESIDENCE

Experience Urban Elegance in Zakaki, Limassol

Welcome to Redwood Residence, your new luxury home situated in the vibrant Zakaki area of Limassol, just a short 700m stroll from Europe's largest casino.

This prime location offers unbeatable convenience with easy access to the new golf resort, Ladies Mile beach, a bustling shopping mall, and an exciting water park—all within a few minutes' drive.

PROJECT HIGHLIGHTS

Boutique Hotel Concept

Redwood Residence adopts a boutique hotel style, featuring shared luxury amenities on a common rooftop. Residents can unwind in our expansive yoga area, entertain guests at the barbecue zone, relax on stylish sunbeds, or soak in the grand Jacuzzi.

Full-Service Property Management

We offer comprehensive property management services, perfect for those looking to leverage platforms like Airbnb and Booking. From day one, your investment is set for success, whether you choose to generate rental income or enjoy the residence yourself.

COMPANY DESCRIPTION

Located in Limassol, Cyprus, our company specializes in developing prime real estate projects in the most desirable locations, ensuring our clients enjoy peace of mind and our investors benefit from consistently high tenant demand. We offer a comprehensive package that includes property management, catering to those interested in a hands-off investment approach.

We are committed to innovation and excellence in every aspect of our work. Our team continuously steps out of the comfort zone to stay dynamic within the industry, integrating the latest ideas, designs, and materials into our projects. This approach not only enhances the aesthetic and functional quality of our developments but also ensures that we remain at the forefront of the real estate market in Limassol.



www.dnagroup.com.cy
+357 25 250 052



Amenities

- Golf Resort 3 min
- COD Casino and Reso 2 min
- Limassol Marin 7 min
- Pharmacy 1 min
- School 4 min
- Public Beach 5 min
- Bars Area 8 min
- Restaurants 1 min
- MY Mall 2 min
- Paphos Airport 40 min
- Larnaca Airport 45 min





Why Limassol Stands Out

Limassol, Cyprus, offers a unique blend of lifestyle, business, and investment benefits, making it a top choice for both living and investing.





KEY ADVANTAGES

Mediterranean Climate

Enjoy year-round sunshine, mild winters, and warm summers, perfect for outdoor activities.

Beautiful Beaches

Limassol boasts some of the best beaches in Cyprus, ideal for swimming, water sports, and relaxation.

Vibrant Culture

A rich cultural scene with numerous festivals, events, and historical sites.

Modern Infrastructure

Excellent healthcare facilities, international schools, and efficient public transport.

Safety and Quality of Life

Low crime rates and a high standard of living contribute to a safe and pleasant environment.



Luxury Living

A wide range of luxury properties, from modern apartments to spacious villas, often with stunning sea views.

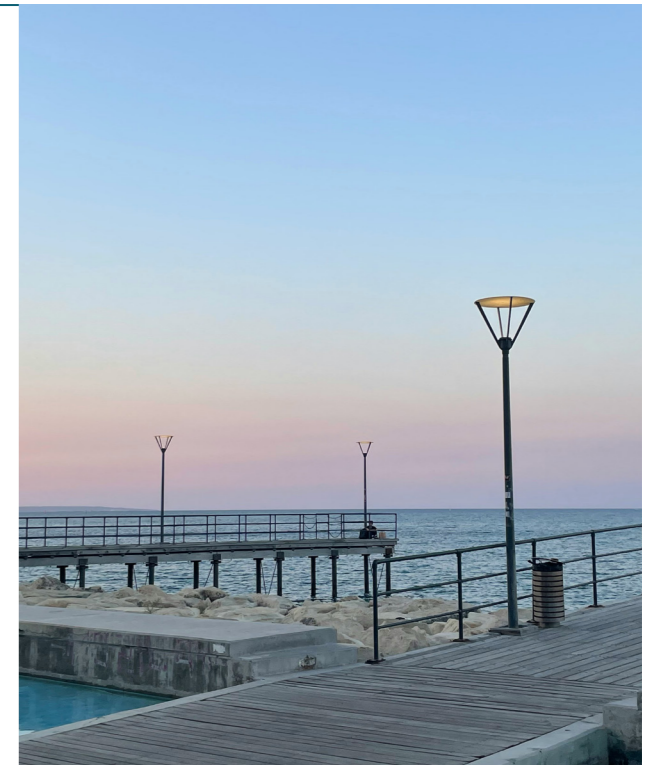
BUSINESS BENEFITS

Strategic Location

Situated at the crossroads of Europe, Asia, and Africa, Limassol is an ideal base for international business operations.

Tax Incentives

Attractive tax regime with low corporate tax rates and numerous incentives for businesses.



Advanced Infrastructure

Modern office spaces, high-speed internet, and efficient logistics networks.

Skilled Workforce

Access to a highly educated and multilingual workforce.

Growing Financial Sector

A strong presence of international banks, investment firms, and financial services.

Supportive Business Environment

Government policies that promote entrepreneurship and foreign investment.





INVESTMENT KEYS

Strong Property Appreciation

Limassol's real estate market has shown consistent and impressive growth, with property values increasing by an average of 7.5% annually.

High Rental Yields

Demand for rental properties is strong, offering investors attractive returns.

New Developments

Ongoing and upcoming projects, like City of Dreams Mediterranean, enhance the investment potential.

Foreign Investment

Limassol attracts significant foreign investment, which supports market stability and growth.

Regulatory Support

Favorable regulations for property ownership and investment, including protection for foreign investors.

Tourism Boom

The thriving tourism industry drives demand for both residential and commercial properties.

Limassol

Limassol seamlessly combines a relaxed Mediterranean lifestyle with a dynamic business environment and strong investment potential, making it a highly desirable place to live, work, and invest.















STUDIO





BEDROOM





BED APARTMENT



BATHROOM



TECHNICAL



External Windows and Doors

High-quality glazed sliding doors and windows featuring excellent thermal properties and ease of use, completed in a sophisticated dark grey finish. Opening windows and fixed panels designed for thermal efficiency and operational comfort.



Internal Doors

Fireproof security entrance door offering both protection and aesthetics. Internal doors come with frames, ensuring a consistent and finished look throughout.



Energy Efficiency

The project is committed to high energy efficiency, achieving an 'Energy Class A' rating for environmental sustainability.



Internal Lighting

Thoughtfully designed lighting system offering conventional control for ease of use. Lighting circuits are divided for reliability, minimizing the impact of any single outage.



Wall Tiles

Best quality ceramic tiles with low porosity for resistance against humidity, stains, and bacteria, ideal for bathroom walls and shower areas. A variety of textures and finishes for wall tiles, including marble, stone-effect, and concrete, to create a harmonious aesthetic.

SPECIFICATIONS



Flooring

Premium quality tiles for luxurious spaces, available in gloss or matt finishes, suitable for entrance halls, living & dining areas, kitchens, and verandas. Bathrooms feature top-quality ceramic tiles known for durability and ease of maintenance, ensuring safety and hygiene. Bedrooms are adorned with engineered hardwood floors for warmth and elegance.



Carpentry

Kitchens are designed to be functional and practical, using easy-clean materials and modular designs to optimize the workflow.



Sanitary Ware / Fittings

High-quality sanitary ware, toilets, mixers, and matching accessories, chosen for their superior quality and design.



Wardrobe Specifications

Spacious and functional wardrobes designed to meet all storage needs with style and practicality, finished with laminate for durability and ease of maintenance. This revision maintains a high level of detail while keeping the description broad and in line with European standards of quality and design. Specific brands and country origins have been omitted to keep the specifications general.

This version emphasizes compliance with EU standards and regulations, including energy efficiency and safety features.



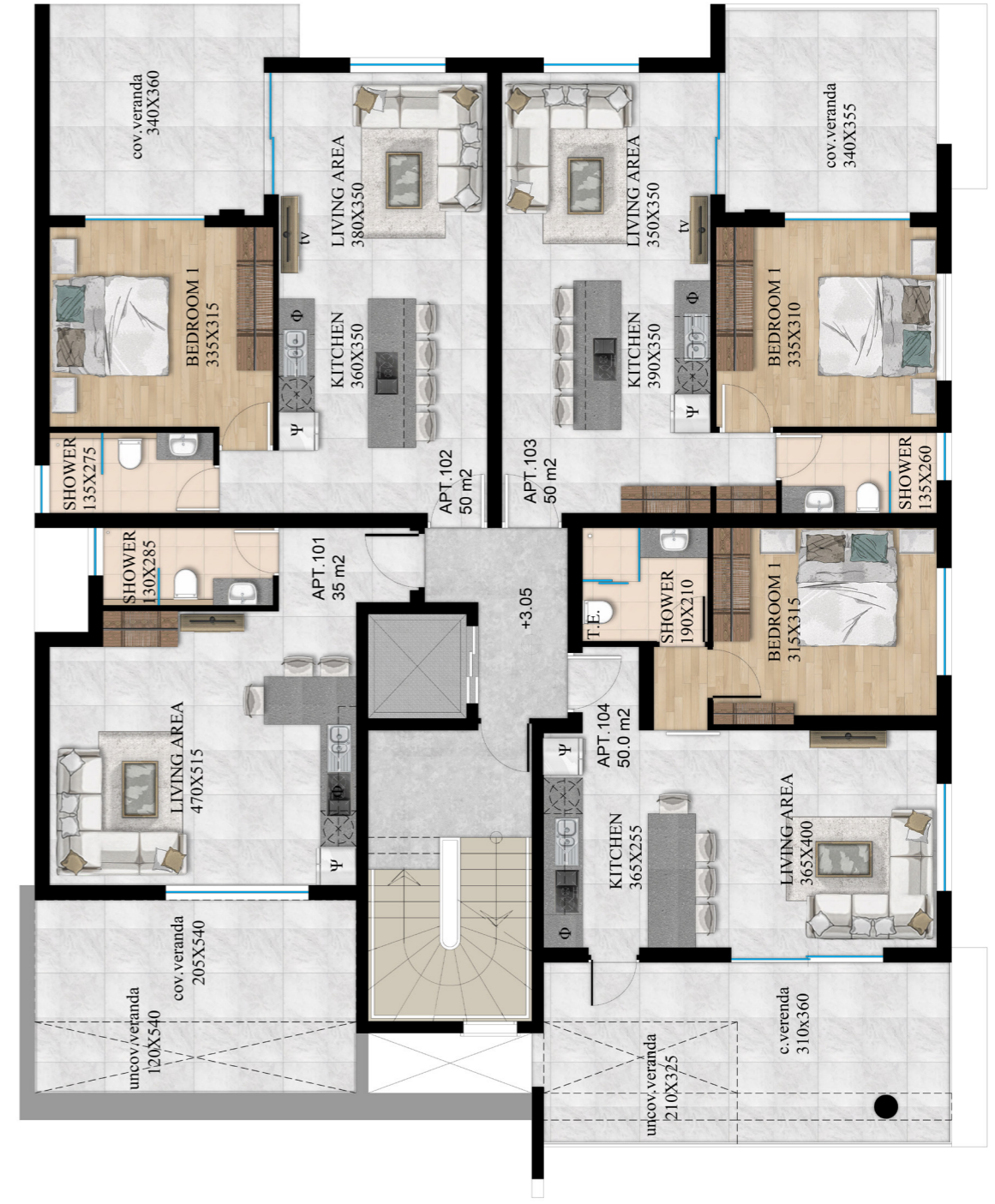
GROUND FLOOR



TEM.439

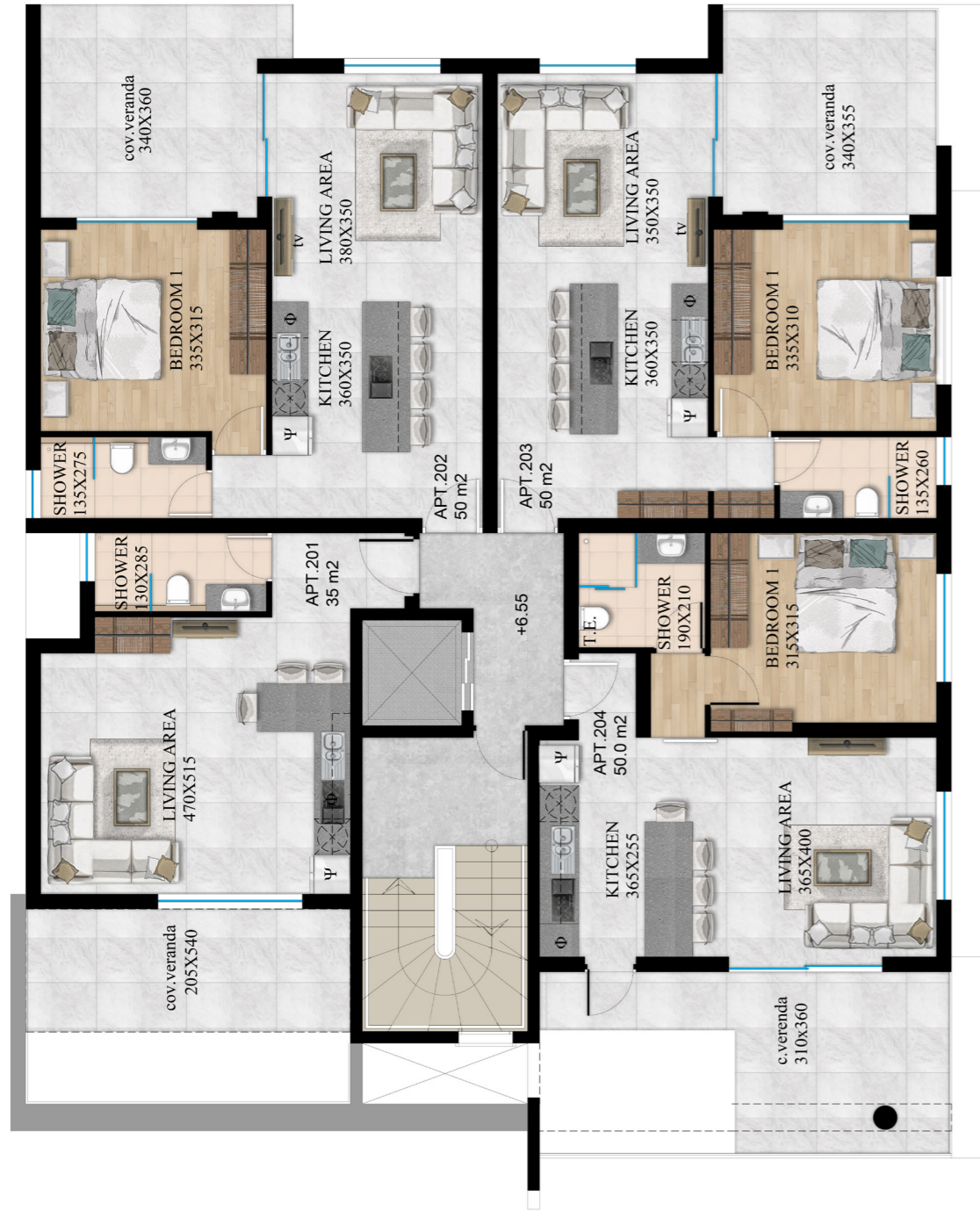
FIRST FLOOR

Apartment NO	Internal	Cov Verandas	Unc Verandas	Common Areas	Total
101	35	11,5	6,45	14,91	67,41
102	50	12,25	0	21,27	83,52
103	50	12,05	0	21,27	83,32
104	50	14,2	6,6	21,27	92,07



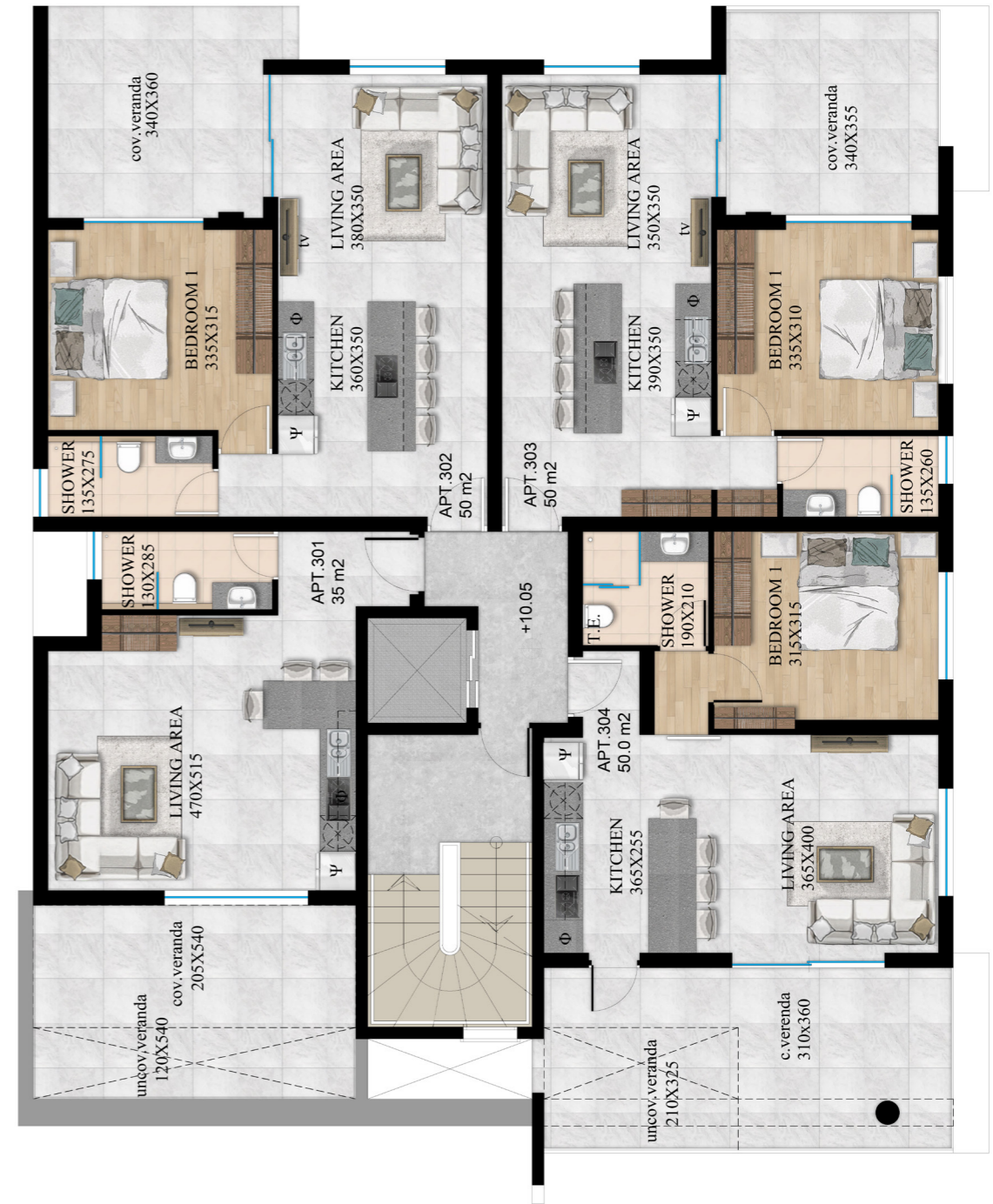
SECOND FLOOR

Apartment NO	Internal	Cov Verandas	Unc Verandas	Common Areas	Total
201	35	11,5	0	14,91	60,96
202	50	12,25	0	21,27	83,52
203	50	12,05	0	21,27	83,32
204	50	14,2	0	21,27	85,47



THIRD FLOOR

Apartment NO	Internal	Cov Verandas	Unc Verandas	Common Areas	Total
301	35	11,5	6,45	14,91	67,41
302	50	12,25	0	21,27	83,52
303	50	12,05	0	21,27	83,32
304	50	14,2	6,6	21,27	92,07





ROOF GARDEN

- Jacuzzi
- BBQ
- Island bar
- Seating area
- Wc
- Shower
- UP TO 10 Sunbed spots



Contact Details:

www.dnagroup.com.cy
 +357 25 250 052
info@dnagroup.com.cy
 Vragadinou 35, 1st Floor,
 Office 101,3041, Limassol, Cyprus



DNA GROUP
REAL ESTATE DEVELOPER