



Lyria Court

Paphos Center



City Pulse

Six modern apartments in a prime location of Paphos, only a few minutes from the city's business center. A thoughtful layout designed for a comfort and elegant living.

Availability

Flat Number	Bedrooms/ Bathrooms	Internal Area m ²	Covered verandas m ²	Storage Room m ²	Parking Space	Price
101	2/2	84	20	4	Yes covered	€270,000+ VAT
102	2/2	84	20	4	Yes covered	€270,000+ VAT
201	2/2	84	20	4	Yes covered	€275,000+ VAT
202	2/2	84	20	4	Yes covered	€275,000+ VAT
301	2/2	84	20	4,6	Yes covered	RESERVED
302	2/2	84	20	4	Yes covered	RESERVED

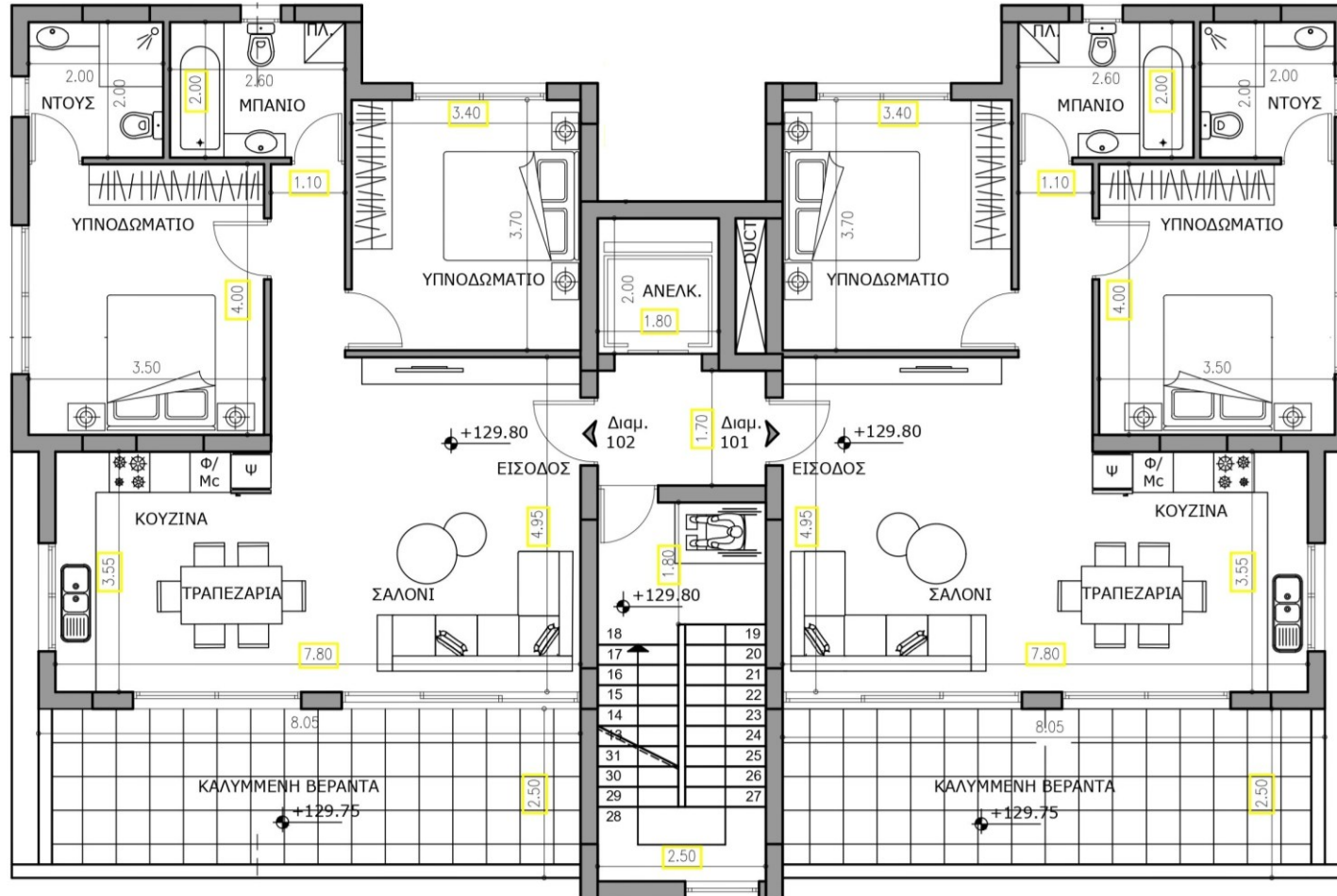


Key characteristics

- Provision for A/C
- Provision for PV System
- Covered parking & storage room
- Energy Efficiency A
- Thermal insulated windows
- Optional furniture package
- Optional underfloor heating
- Optional alarm system

Introduction

Floor Plans- 1st, 2nd & 3rd Floor



Gallery



Gallery



Gallery



Gallery



Gallery



Gallery



Gallery



Gallery



