



W

imbledon



## ABOUT THE PROJECT



This elegant 4-floor residential building is located in Pano (Upper) Paphos, a well-known business-oriented area, offering a perfect balance of modern living and urban convenience. The project consists of:

- One-bedroom apartments starting from 49 sqm (2 units)
- Two-bedrooms apartments starting from 77 sqm (5 units)
- Three-bedrooms apartments starting from 126 sqm (2 units, including an exceptional penthouse.)

With its simple yet refined design, the building seamlessly blends contemporary aesthetics with everyday comfort. Ideally located in the city center, it offers excellent accessibility, ensuring easy reach to key destinations within minutes.

Residents will enjoy the convenience of having a variety of dining options and everyday essentials just steps away. Surrounded by businesses, schools, and green spaces, the area creates a dynamic yet family-friendly environment. With effortless access to almost anywhere in the city by car, this location perfectly balances urban vibrancy with practicality.



# EXTERIORS



# LOCATION

Wimbledon is located in an ideal area of the city centre, providing residents with direct access to essential services and amenities. The area is highly developed, making it perfect for family life and everyday convenience.

What Makes This Location Special:

## **Educational Facilities:**

- Nearby, there are kindergartens and primary schools, making it convenient for families with young children.

## **Shops & Markets:**

- Within walking distance, there are many clothing stores, super markets, and other retail shops, covering all daily needs.

## **Public Services & Town Hall Square:**

- The main square of Paphos is very close, where the Town Hall and other public services are located just few minutes away.

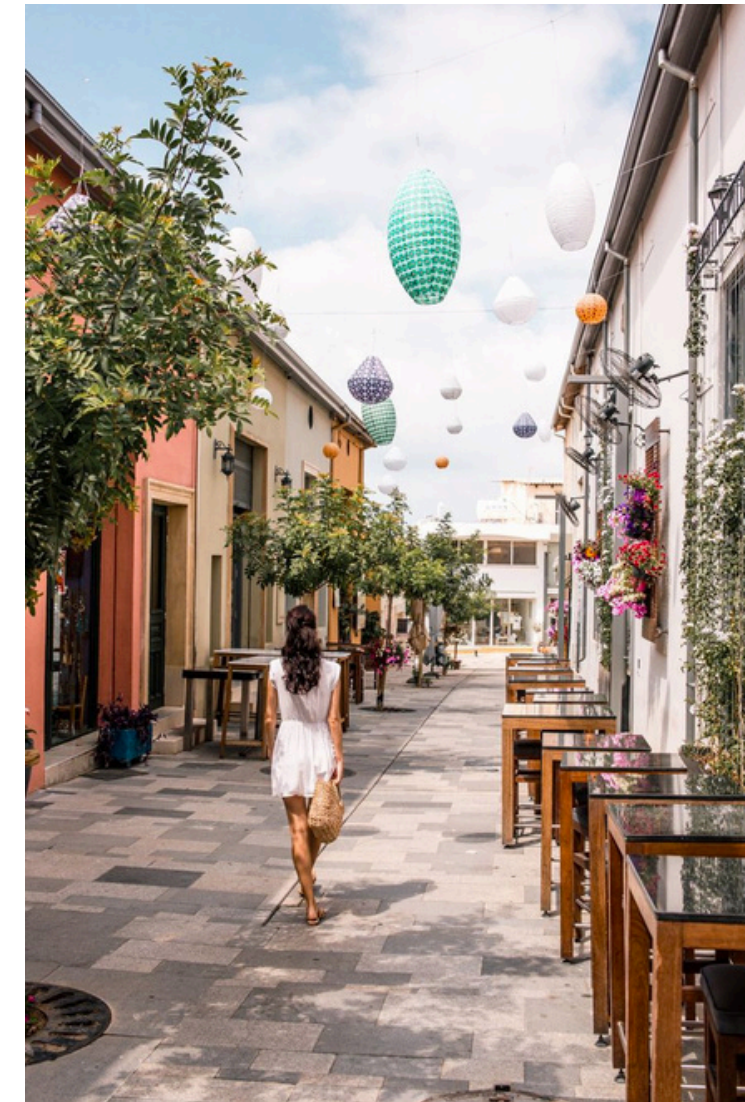
## **Restaurants & Entertainment:**

- The area offers cafés, restaurants, and leisure spots, creating a lively and comfortable living environment.

## **Transport & Accessibility:**

- Easy access to central transportation hubs, making it simple to travel throughout Paphos.

The strategic location of the project provides the perfect combination of convenience, accessibility, and quality of life, making it an excellent choice for residential living.



# MAP



# INTERIORS

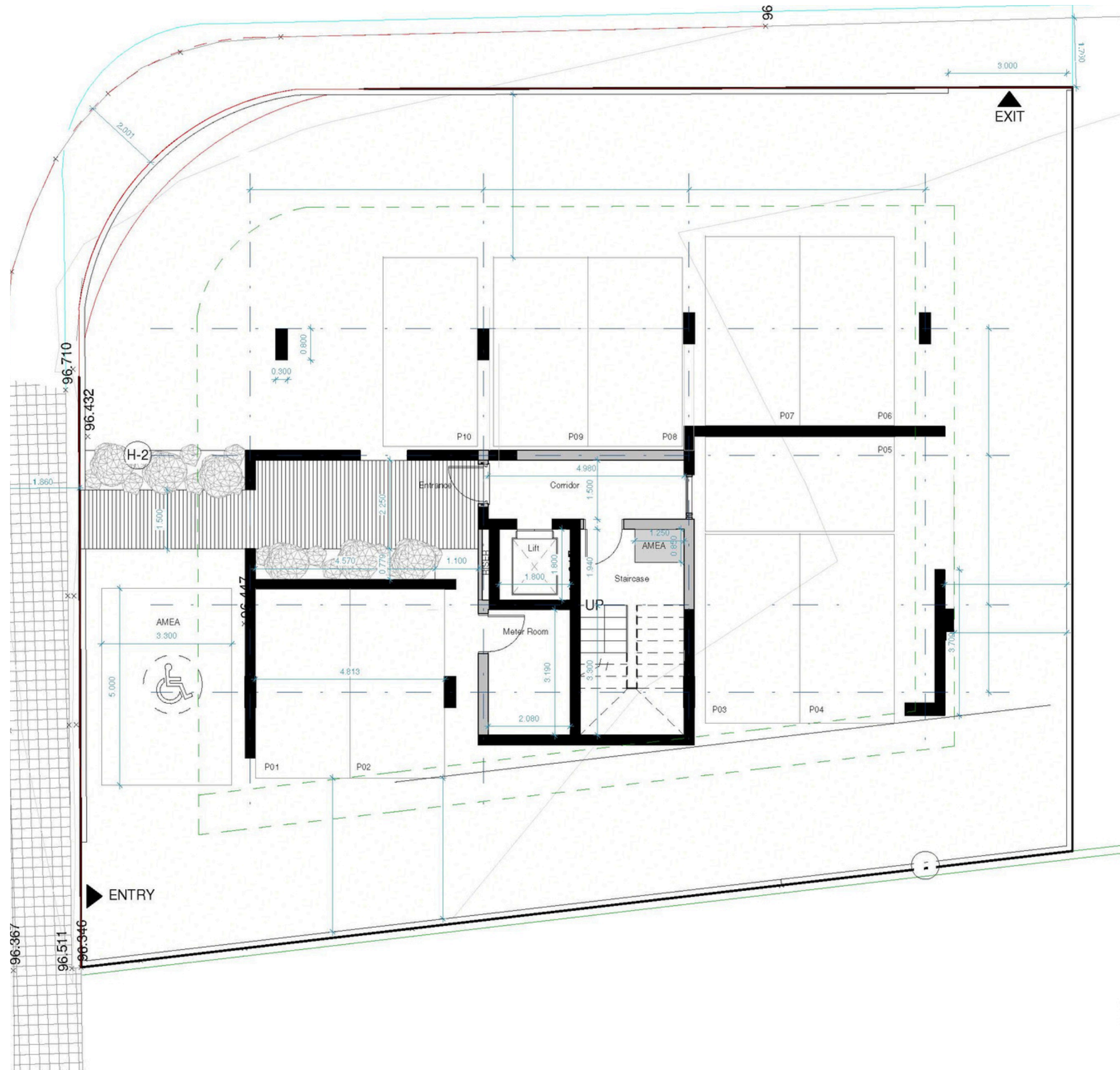


# INTERIORS



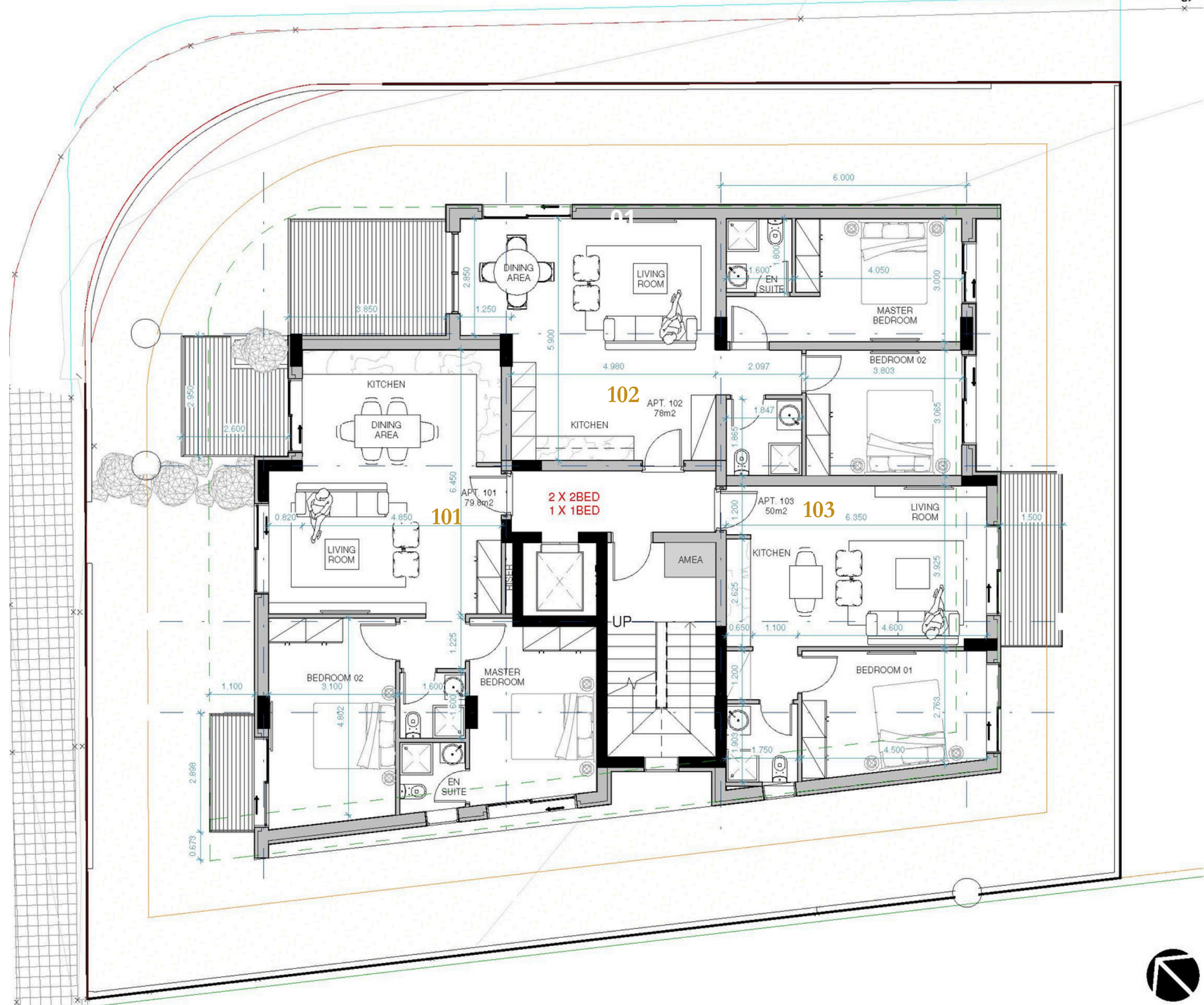
# PLANS

## GROUND FLOOR



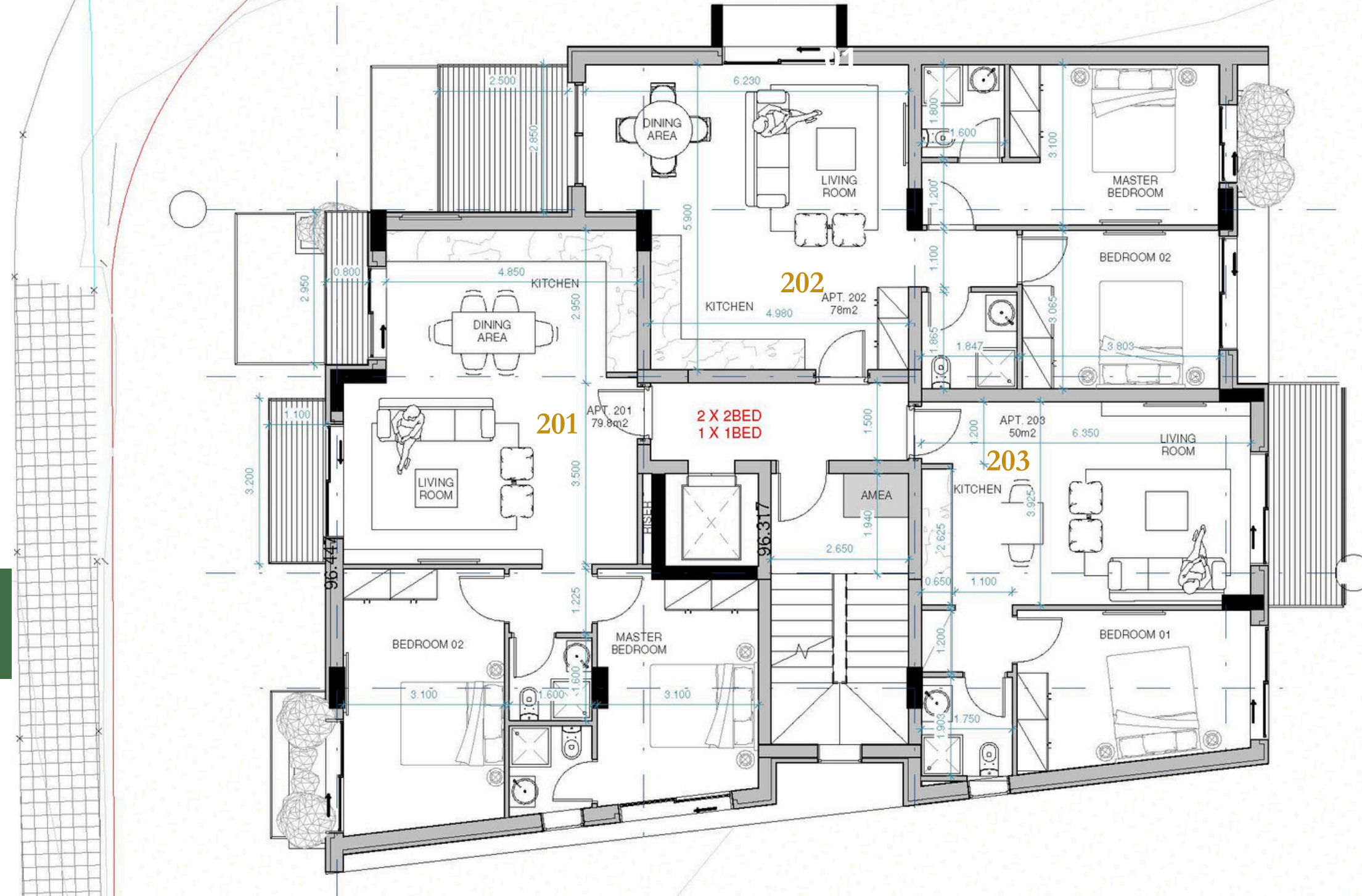
# PLANS

## FIRST FLOOR



# PLANS

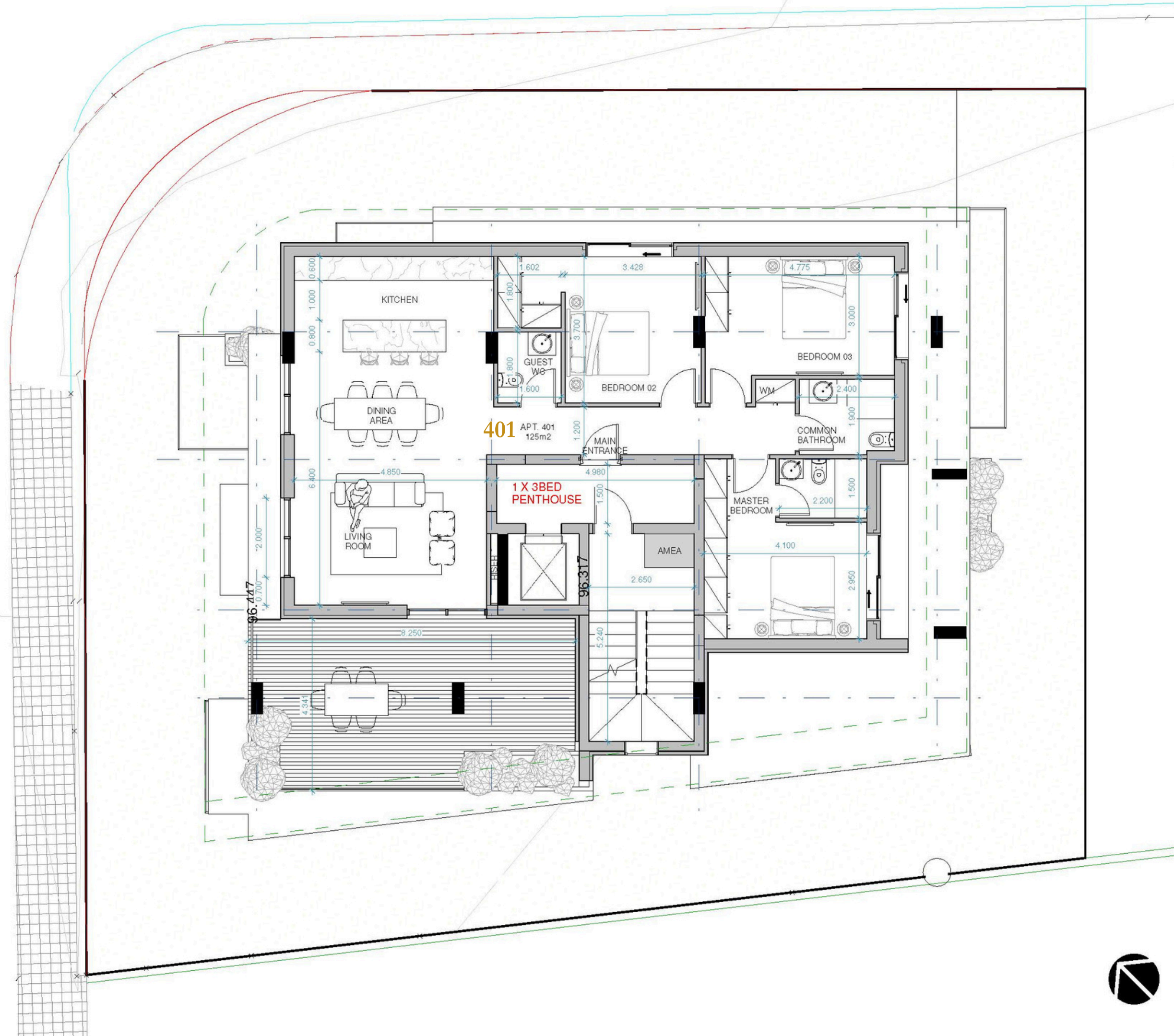
## SECOND FLOOR





# PLANS

## FOURTH FLOOR





# AGG

## LUXURY HOMES

 [WWW.AGCYPRUS.COM](http://WWW.AGCYPRUS.COM)

3D images are for reference only and may differ based on the Planning Permit and any modifications made by the Architect.