



AZALEA

LIMASSOL



CONCEPT

AZALEA is a modern residential project located in the vibrant city of Limassol. It comprises 10 thoughtfully designed apartments, offering a choice of 1- to 2-bedroom layouts and a 3-bedroom penthouse. Each apartment includes dedicated storage space and private parking, ensuring convenience and practicality for residents.

Situated in a desirable area, AZALEA is close to a variety of amenities, including cafes, restaurants, shops, and entertainment options. Its prime location also provides easy access to the city's beautiful coastline, creating an ideal balance between urban living and seaside tranquility.

This project offers a dynamic living experience in one of Limassol's most sought-after neighbourhoods.

LOCATION

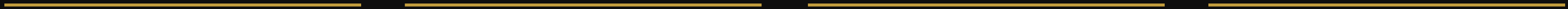
Germasogeia, Limassol

Situated just east of Limassol's center, Germasogeia is a highly desirable area offering easy access to the beach, local amenities, and major roadways. Residents benefit from nearby supermarkets, cafes, schools, and services, all within a short distance.

Its prime location, coupled with a well-developed infrastructure, makes Germasogeia ideal for comfortable living and a smart investment choice.



EXTERIORS





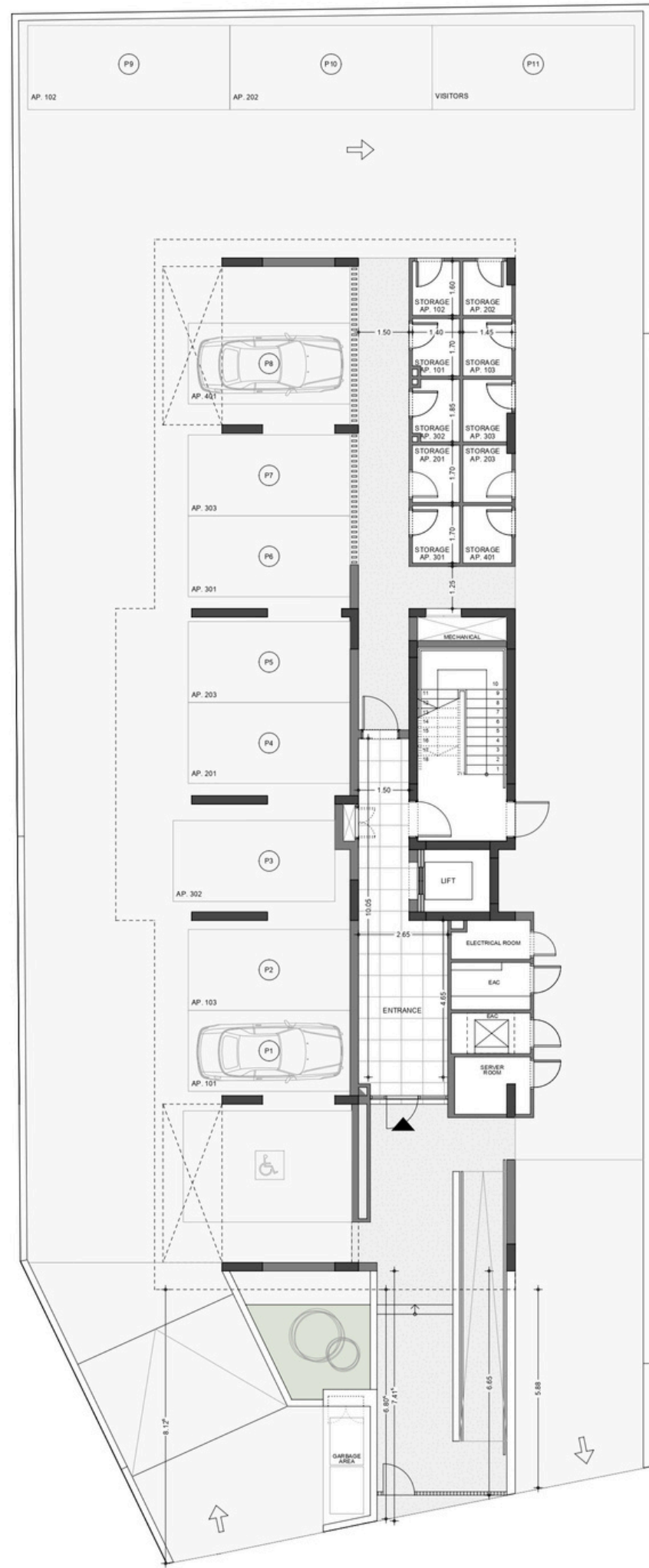
BEST CHOICE IN LIMASSOL



INTERIOR



GROUND FLOOR



10 PARKINGS
10 STORAGES

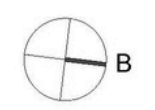
FIRST FLOOR



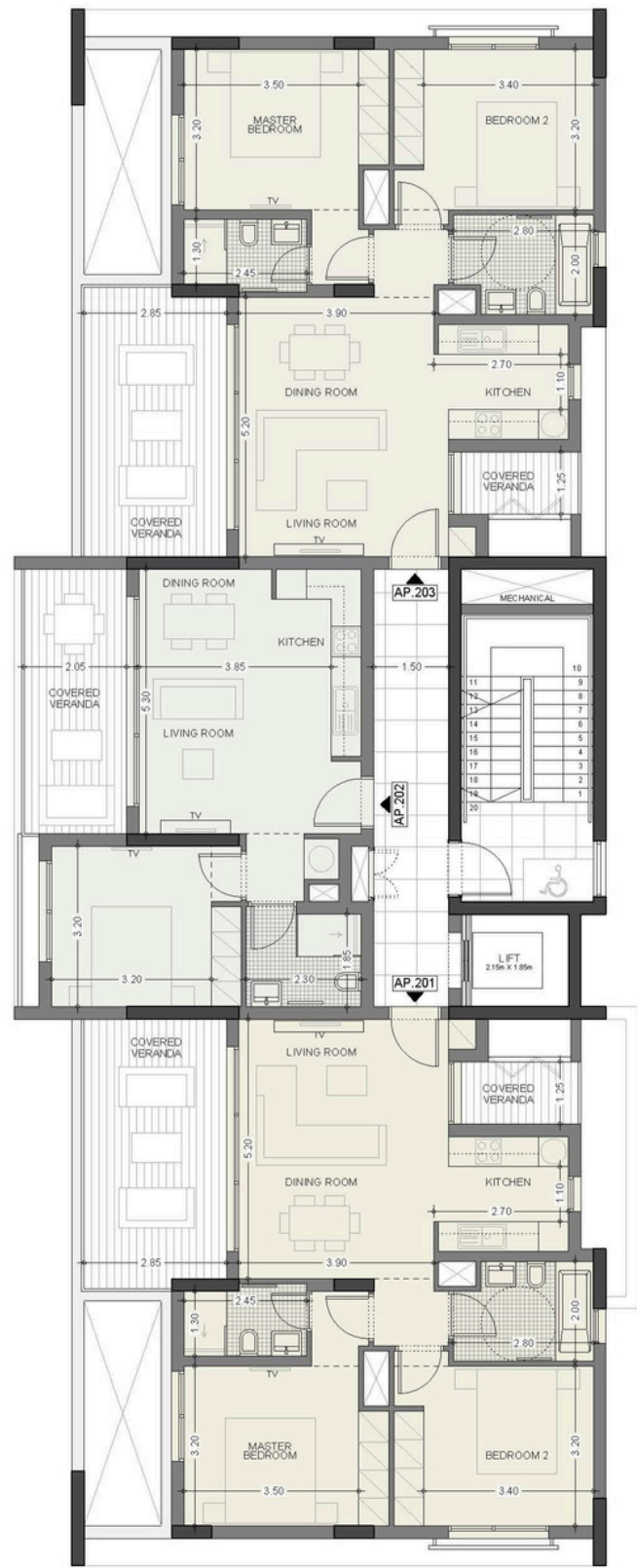
101:
2 BEDROOMS
2 BATHROOMS

102:
1 BEDROOM
1 BATHROOM

103:
2 BEDROOMS
2 BATHROOMS



SECOND FLOOR

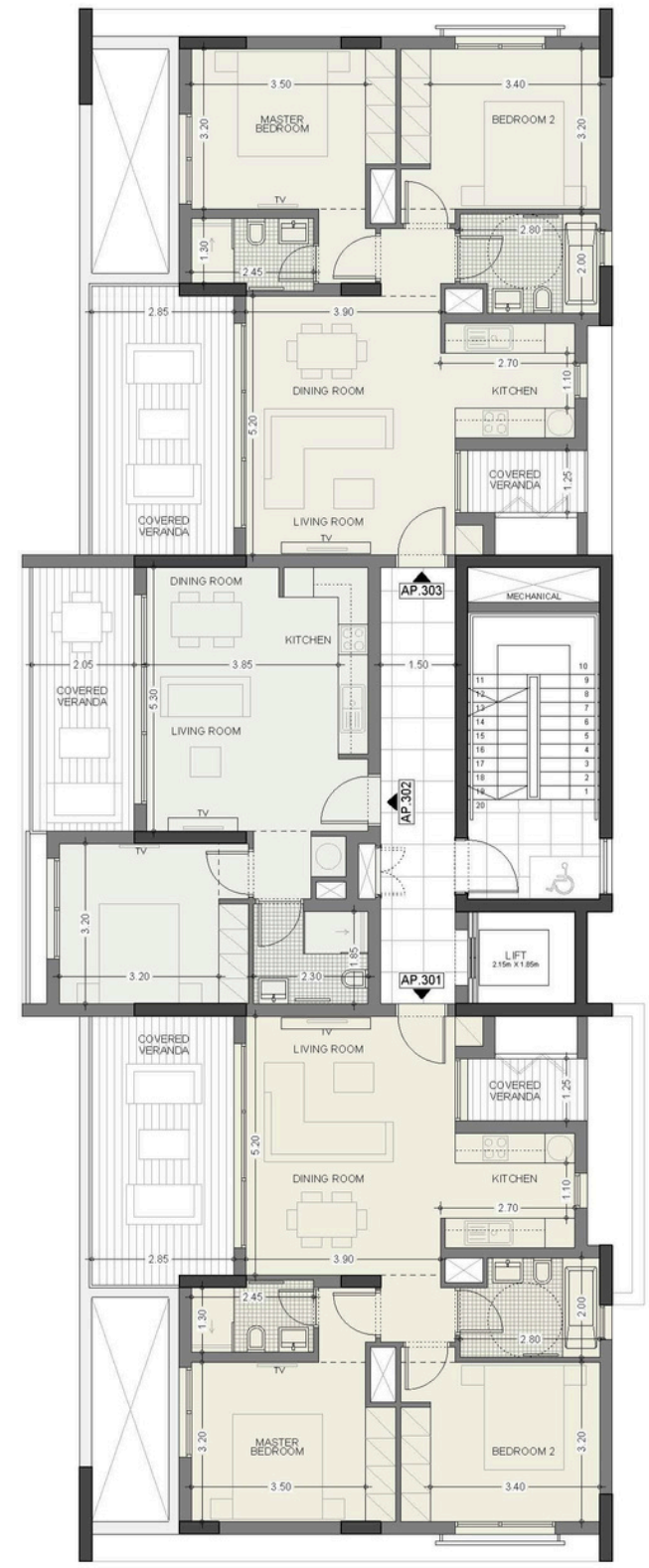


201:
2 BEDROOMS
2 BATHROOMS

202:
1 BEDROOM
1 BATHROOM

203:
2 BEDROOMS
2 BATHROOMS

THIRD FLOOR

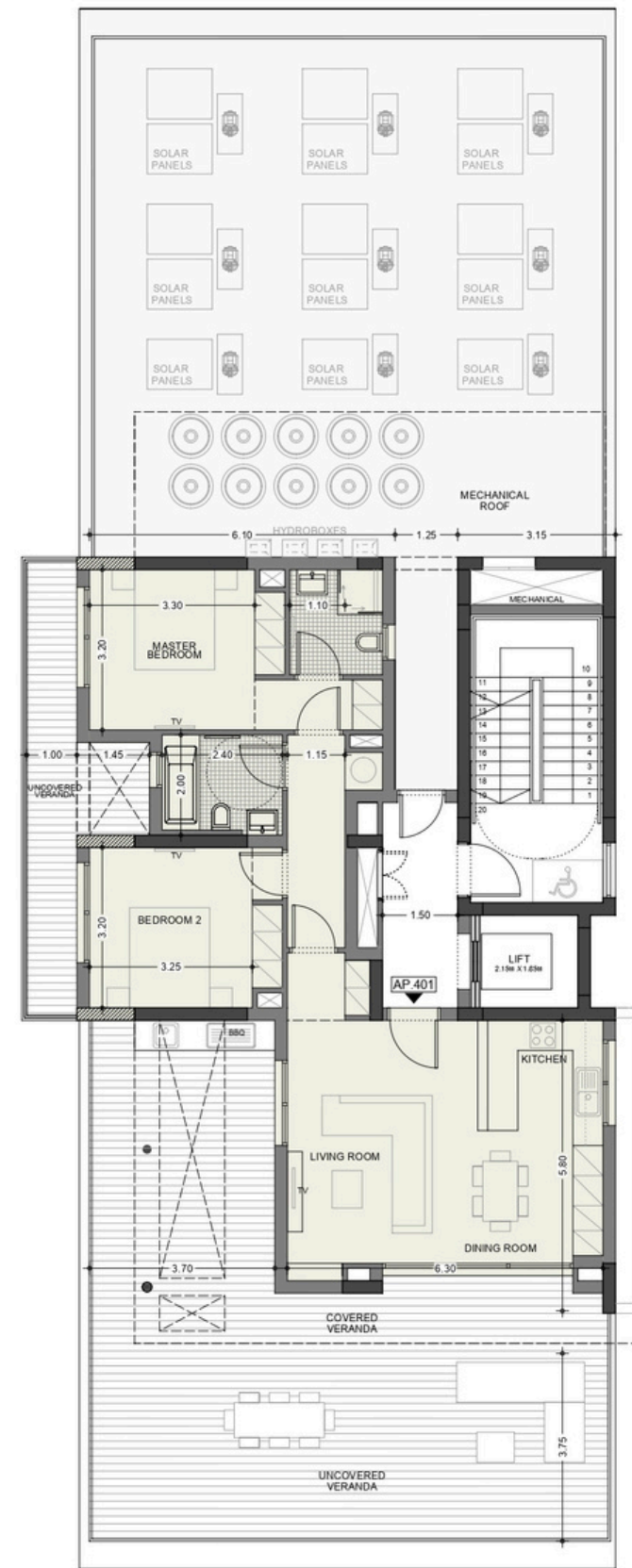


301:
2 BEDROOMS
2 BATHROOMS

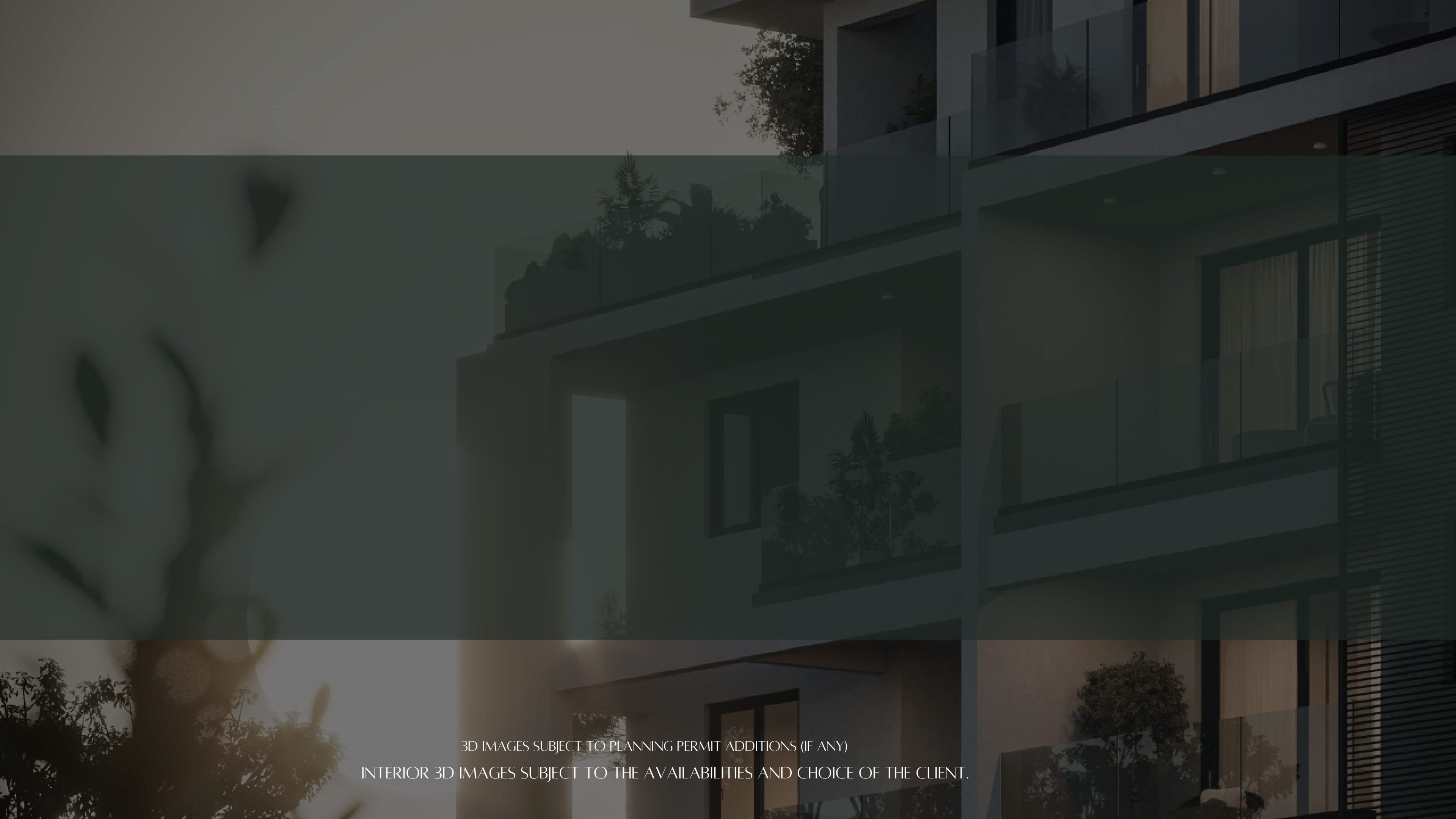
302:
1 BEDROOM
1 BATHROOM

303:
2 BEDROOMS
2 BATHROOMS

FOURTH
FLOOR



401:
2 BEDROOMS
2 BATHROOMS



3D IMAGES SUBJECT TO PLANNING PERMIT ADDITIONS (IF ANY)
INTERIOR 3D IMAGES SUBJECT TO THE AVAILABILITIES AND CHOICE OF THE CLIENT.